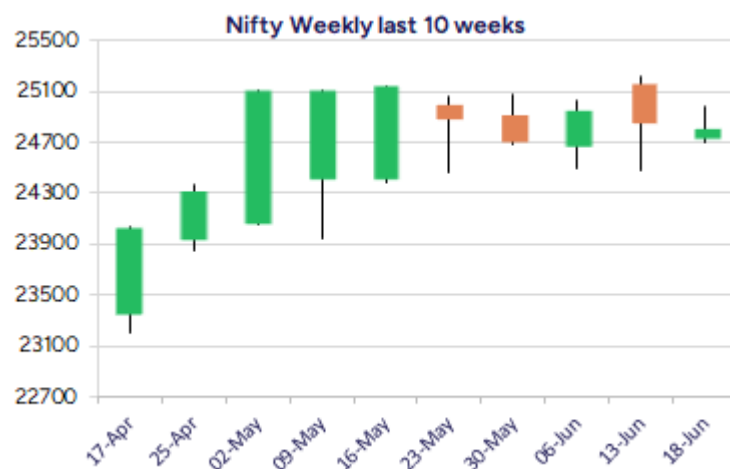
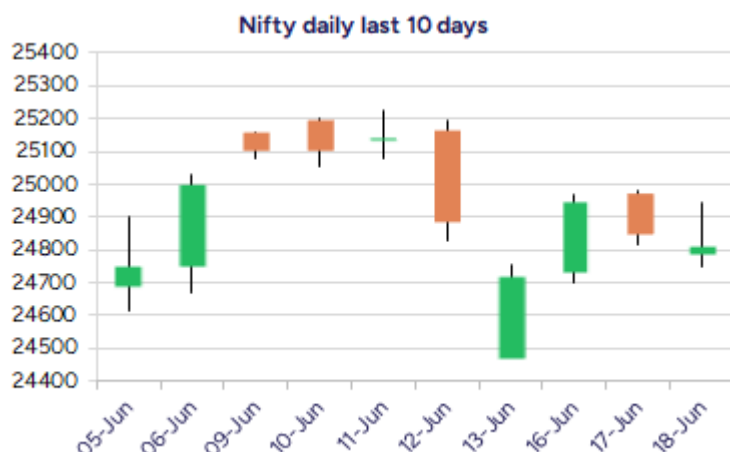


Date: 19th June 2025

* Sensex 81444.66 -138.64

* Nifty 24812.05 -41.35

* Bank Nifty 55828.75 +114.60



*Blue candle → Close rate > Open rate * Red candle → Close rate < Open rate

Market Preview

Nifty sustains 24800 zone

Nifty amid high fluctuations with the ongoing geo-political tensions has been precariously placed and has managed to close above the 24800 levels. BankNifty has witnessed some positive moves during the session with the 56000 zone acting as a tough hurdle which needs to be decisively breached above. The market breadth has been weak with the advance decline indicating a ratio of 2:3 at close.

Market Forecast

Nifty daily range 24600-25000

Nifty, after witnessing a volatile morning session, gave in with profit booking seen from the 24950 zone and ended the session near the 24800 level with the bias and sentiment precariously placed on the back of ongoing geo-political tensions. As mentioned earlier, the index would need to sustain above the have the crucial and important support zone at 24500 level and at the same time, would need a decisive move above the 25200 level to anticipate for further fresh upward move.

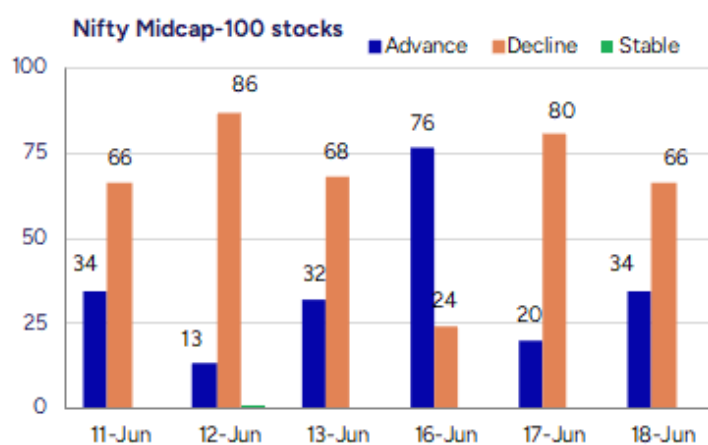
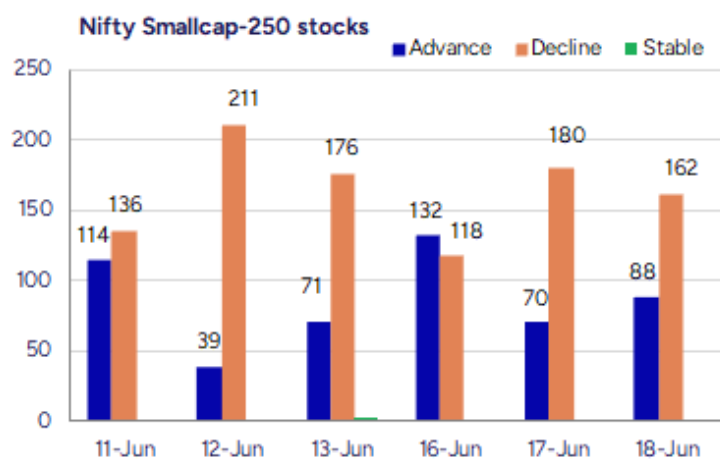
BankNifty, amid the volatile session failed to move past the hurdle band of 55800-56000 levels and closed near 55800 zone with overall bias maintained with a cautious approach also awaiting the FED outcome to anticipate for fresh developments in the coming sessions. The index has been precariously placed and would need a decisive move above the 56000 zone, as mentioned earlier, to turn the bias positive and at the same time would need to sustain the near-term support positioned near the 55000 level to maintain the overall trend intact.

The support for the day is seen at 24600 levels while the resistance is seen at 25000 levels. BankNifty would have the daily range of 55400-56400 levels.

Indices	Period	Closing	% Chng	Trend	Reversal	2 Sup	1 Sup	Pivot	1 Res	2 Res
Nifty	Daily	24812.05	-0.17%	-5	24970.00	24640	24726	24837	24923	25034
	Weekly	24718.60	-1.14%	-1	24865.20	24055	24387	24804	25136	25553
	Monthly	24750.70	1.71%	1	24390.40	23422	24086	24600	25265	25779
Bank Nifty	Daily	55828.75	0.21%	-6	56152.10	55336	55583	55758	56004	56180
	Weekly	55527.35	-1.86%	-1	56270.45	54009	54768	55909	56668	57809
	Monthly	55749.70	1.20%	2	53879.10	52648	54199	55036	56587	57424
Sensex	Daily	81444.66	-0.17%	-5	81886.45	80892	81168	81514	81790	82136
	Weekly	81118.60	-1.30%	-1	81900.95	79071	80095	81437	82460	83802
	Monthly	81451.01	1.51%	1	80320.40	77296	79374	81046	83123	84796

Gainers - Losers (Nifty 500 Stocks)

Gainers				Losers			
Company Name	Last Price	% Gain	Volume	Company Name	Last Price	% Loss	Volume
Electronics Mar	158.37	17.81	52509050	Orient Cement	253.7	-16.31	10942163
Sunrest	61	15.42	1600	Dhanlaxmi Crop	47.9	-11.05	132000
Silly Monks Ent	18	13.64	537271	Aurangabad Dist	141.95	-10.02	5000
Vinyas	1130	13	58000	One Mobikwik	244.85	-9.11	2819920
Optimus Infra	684.6	11.38	13140094	STL Global	16.62	-8.48	241005
Prime Focus	130.98	10.28	1001717	Inventurus Know	1703.4	-8.21	1388505
Aban Offshore	56.39	9.99	334437	Capital Trust	84.04	-7.42	35783



Nifty Daily chart with RSI indicator



BankNifty Daily chart with RSI indicator



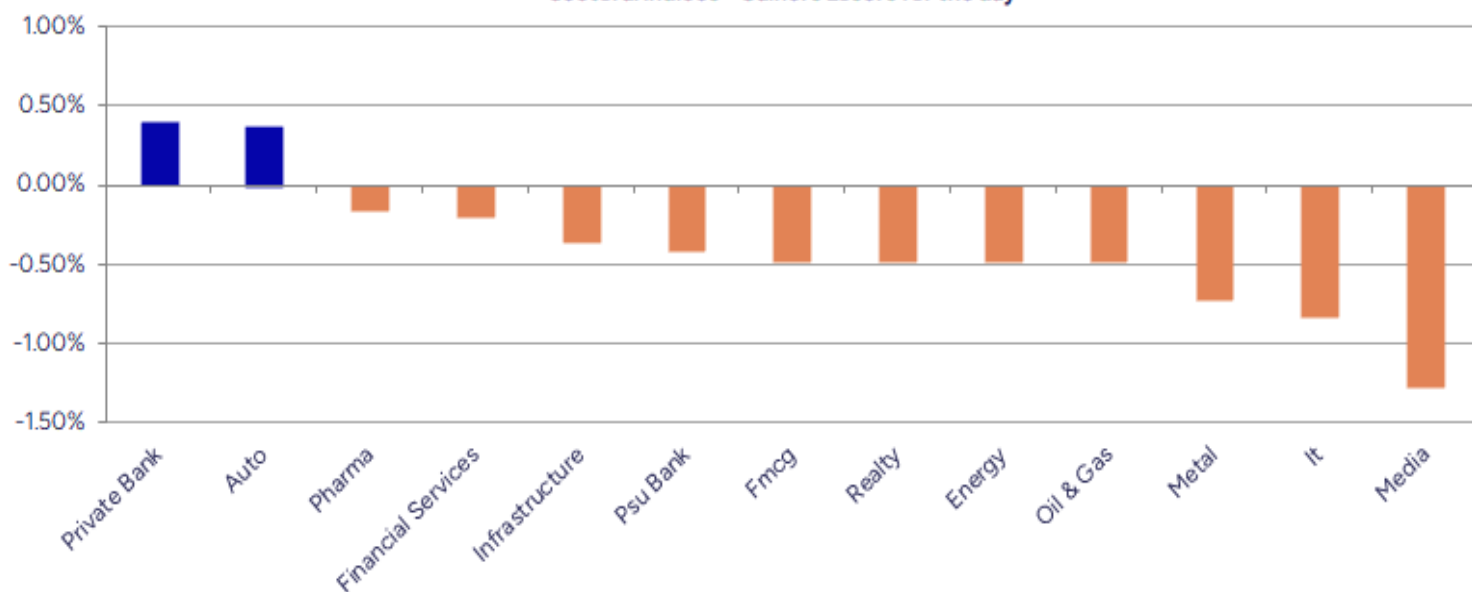
Breakouts - Cross above 200 DMA			
Company Name	LCP	Change %	200 DMA
Prime Focus	130.98	9.61	119.5
Soma Textile	45.23	5.02	43.07
Aban Offshore	56.39	2.42	55.06
Rainbow Childre	1458.9	2.25	1426.74
Minda Corp	538.4	1.70	529.41
NRB Industrial	27.59	1.32	27.23
Indian Metals	722.3	1.29	713.12
LMW	16365	1.21	16169.31
Sapphire Foods	326.05	1.12	322.43
Megastar Foods	243.95	0.99	241.55
Repco Home	429.95	0.70	426.96
Maral Overseas	75.22	0.64	74.74
Archies	23.47	0.60	23.33
LIC Housing Fin	604	0.53	600.79
California Soft	15.82	0.25	15.78
Indian Hotels	763.3	0.24	761.49
Eternal	248.41	0.19	247.93

* Stocks crossing above its Simple Moving Average (200DMA)

Breakdown - Cross below 200 DMA			
Company Name	LCP	Change %	200 DMA
Energy Dev	22.18	-3.90	23.08
Laxmi Cotspin	28.66	-3.70	29.76
Hind Zinc	452.8	-3.40	468.73
Mohit Ind	30.1	-2.81	30.97
Kriti Nutrients	118.42	-2.60	121.58
MMTC Ltd	69.37	-2.24	70.96
Biocon	342	-1.76	348.11
Greenply Ind	314.65	-1.61	319.79
Manugraph Ind	20.33	-1.60	20.66
NHPC	82.53	-1.54	83.82
Apeejay Park	162.38	-1.38	164.65
20 Microns	232.98	-1.35	236.16
Pidilite Ind	2968.2	-1.33	3008.1
Aegis Logistics	774.5	-1.24	784.19
Rushil Decor	29.62	-1.20	29.98
Repro India	521.35	-1.16	527.46
Bharat Gears	90.11	-1.11	91.12
Kapston Service	238.18	-1.10	240.82

* Stocks crossing below its Simple Moving Average (200DMA)

Sectoral Indices - Gainers Losers for the day



Stocks witnessing a volume surge as compared to their 5 day average volume

Watch out for the stocks that have seen a huge spurt in its share price over the last three days

Volume Shockers - NSE					
Company name	LCP	% Chg	Volume	Avg Vol *	% Chg
Sky Gold	344.25	-5	17446046	25989	67030
Diamond Power	103.85	0.16	2449501	6800	35920
Krishival Foods	381.15	5	141500	1200	11692
Zydus Wellness	2078	6.67	1288817	17997	7061
Laxmi Goldorna	703.1	1.16	71196	1094	6409
Cinevista	23.03	7.92	3750827	70456	5224
Euro Panel	174	8.07	214000	7000	2957
Nagreeka Cap	25.71	-1.72	51090	1969	2495
KCK Industries	43.7	9.52	347500	13600	2455
Hind Zinc	454.7	-6.51	136713667	5606933	2338
Optimus Infra	691	12.42	10419414	497262	1995
PSP Projects	768	5.19	1256283	60147	1989
Sheela Foam	747.65	4	679292	37992	1688
Shakti Pumps	1010.65	0.2	689346	38631	1684
Manali Petro	70.24	7.78	10239646	586801	1645
Sterlite Techno	106.69	-5.34	28191558	1694993	1563
Sikko Industrie	82.5	0.97	491223	29809	1548
Sakar Healthcar	365.8	11.22	292614	17784	1545
Sasta Sundar	317.9	4.9	486266	33445	1354
Jai Balaji Ind	102.91	-1.75	782224	54390	1338

* the Average Volume of last 5 days

Price Shockers - NSE				
Company name	LCP	Prv Close	% Chg	Volume
Sterlite Techno	104.55	83.33	25.47	31740225
Touchwood Enter	119.68	96.49	24.03	49926
Shyam Telecom	18.11	14.94	21.22	6598
Cyber Media	19.49	16.2	20.31	535145
Bikewo Green	23.25	19.75	17.72	34000
Cinevista	21.99	18.75	17.28	4343872
Silly Monks Ent	18	15.41	16.81	537271
Tarapur Trans	30.64	26.48	15.71	91430
Seya Industries	20.74	17.93	15.67	23472
TCI Finance	18.83	16.28	15.66	19656
California Soft	15.82	13.68	15.64	58420
DELPHI WORLD	156.08	135.03	15.59	37500
Agni Green	29.55	25.6	15.43	10000
Bharat Rasayan	10291	8988	14.5	9595
KDDL	2848.5	2493.9	14.22	57250
Globe Internati	122	107	14.02	10500
Spectrum Talent	127	111.75	13.65	11200
Ginni Filaments	48.68	42.95	13.34	435350
Subros	941.95	831.5	13.28	1102086
Mirc Electronic	15.72	13.88	13.26	553915

* the % price rise of the last 3 days

Symbol	LTP	Chng	% Chng	Volume (lacs)	Turnover (crs.)	52w High	Diff with 52w H	52w Low	Diff with 52w L	365 days % chng	30 days % chng
NIFTY 50	24812.05	-41.35	-0.17%	2375.90	22043.40	26277.35	5.58%	21743.65	14.11%	-0.67%	5.91%
ADANIENT	2456.90	-31.60	-1.27%	6.67	164.62	3345.00	26.55%	2025.00	21.33%	-2.60%	-23.71%
ADANIPTS	1370.50	-21.80	-1.57%	17.32	238.40	1604.95	14.61%	995.65	37.65%	-1.07%	-2.68%
APOLLOHOSP	6943.00	-63.50	-0.91%	3.94	275.05	7545.35	7.98%	6001.00	15.70%	-0.12%	12.87%
ASIANPAINT	2277.80	13.00	0.57%	11.31	257.12	3394.90	32.91%	2124.75	7.20%	-3.77%	-22.48%
AXISBANK	1220.00	4.90	0.40%	31.36	382.29	1339.65	8.93%	933.50	30.69%	0.52%	2.88%
BAJAJ-AUTO	8447.50	-47.00	-0.55%	5.61	478.62	12774.00	33.87%	7089.35	19.16%	0.14%	-14.73%
BAJAJFINSV	1979.00	-24.30	-1.21%	14.01	279.04	2135.00	7.31%	1523.25	29.92%	-1.49%	25.86%
BAJFINANCE	918.00	-5.00	-0.54%	50.03	461.79	978.80	6.21%	642.50	42.88%	-89.93%	-87.43%
BEL	400.30	-1.45	-0.36%	188.80	758.08	407.50	1.77%	240.25	66.62%	10.40%	29.76%
BHARTIARTL	1861.80	7.00	0.38%	50.69	945.12	1917.00	2.88%	1372.85	35.62%	2.25%	29.94%
CIPLA	1495.90	-7.60	-0.51%	10.75	161.54	1702.05	12.11%	1335.00	12.05%	0.24%	-3.91%
COALINDIA	390.80	-0.50	-0.13%	41.18	160.68	543.55	28.10%	349.25	11.90%	-3.33%	-19.64%
DRREDDY	1311.60	-7.20	-0.55%	7.29	95.89	1421.49	7.73%	1020.00	28.59%	7.16%	-78.33%
EICHERMOT	5385.00	44.00	0.82%	7.75	419.54	5906.50	8.83%	4508.75	19.43%	-3.06%	8.22%
GRASIM	2675.00	3.60	0.13%	3.42	91.74	2877.75	7.05%	2276.95	17.48%	-4.74%	8.10%
HCLTECH	1719.70	-9.90	-0.57%	17.94	308.74	2012.20	14.54%	1302.75	32.01%	4.20%	20.86%
HDFCBANK	1932.50	2.90	0.15%	92.17	1777.12	1996.30	3.20%	1588.05	21.69%	-0.26%	20.83%
HDFCLIFE	765.45	-8.50	-1.10%	10.59	81.42	791.10	3.24%	575.65	32.97%	3.12%	29.35%
HEROMOTOCO	4360.00	-11.00	-0.25%	3.70	162.58	6246.25	30.20%	3344.00	30.38%	0.59%	-24.69%
HINDALCO	644.40	2.70	0.42%	34.13	220.14	772.65	16.60%	546.45	17.92%	-2.41%	-6.13%
HINDUNILVR	2295.10	-33.50	-1.44%	20.57	473.43	3035.00	24.38%	2136.00	7.45%	-2.22%	-6.10%
ICICIBANK	1413.00	-10.20	-0.72%	67.52	955.73	1471.60	3.98%	1101.20	28.31%	-2.12%	28.72%
INDUSINDBK	847.10	37.95	4.69%	208.27	1759.40	1550.00	45.35%	606.00	39.79%	3.71%	-46.14%
INFY	1632.00	-7.90	-0.48%	56.30	918.57	2006.45	18.66%	1307.00	24.87%	3.14%	10.14%
ITC	415.60	-1.80	-0.43%	80.36	334.38	528.50	21.36%	390.15	6.52%	-4.20%	-3.19%
JIOFIN	287.75	-2.05	-0.71%	83.96	243.09	368.30	21.87%	198.65	44.85%	4.62%	-18.82%
JSWSTEEL	986.90	-12.75	-1.28%	8.55	84.53	1074.90	8.19%	854.15	15.54%	-2.17%	8.52%
KOTAKBANK	2134.90	-1.90	-0.09%	39.01	828.58	2301.90	7.25%	1679.05	27.15%	1.36%	24.44%
LT	3600.80	-21.50	-0.59%	7.43	267.98	3963.50	9.15%	2965.30	21.43%	0.49%	-1.78%
M&M	3038.00	30.80	1.02%	21.61	657.80	3270.95	7.12%	2425.00	25.28%	-4.09%	2.68%
MARUTI	12750.00	155.00	1.23%	4.68	597.25	13680.00	6.80%	10725.00	18.88%	-3.08%	-1.95%
NESTLEIND	2330.20	-31.80	-1.35%	6.54	153.10	2778.00	16.12%	2110.00	10.44%	-1.94%	-7.10%
NTPC	332.55	-2.65	-0.79%	178.35	593.51	448.45	25.84%	292.80	13.58%	-2.30%	-9.02%
ONGC	249.85	-2.46	-0.97%	126.91	320.29	345.00	27.58%	205.00	21.88%	2.04%	-8.38%
POWERGRID	287.00	-1.55	-0.54%	119.05	341.57	366.25	21.64%	247.30	16.05%	-3.88%	-10.25%
RELIANCE	1429.70	-1.50	-0.10%	66.82	956.33	1608.80	11.13%	1114.85	28.24%	-1.73%	-51.57%
SBILIFE	1791.50	-8.70	-0.48%	3.50	62.84	1936.00	7.46%	1372.55	30.52%	1.51%	22.47%
SBIN	790.40	-1.90	-0.24%	57.10	451.94	899.00	12.08%	680.00	16.24%	0.03%	-5.59%
SHRIRAMFIN	660.75	-4.25	-0.64%	33.53	222.50	730.45	9.54%	493.35	33.93%	-0.08%	-75.66%
SUNPHARMA	1645.30	-4.90	-0.30%	14.56	239.99	1960.35	16.07%	1460.90	12.62%	-4.88%	8.85%
TATACONSUM	1063.60	-8.00	-0.75%	5.46	58.21	1250.10	14.92%	882.90	20.47%	-8.25%	-3.67%
TATAMOTORS	669.95	-4.80	-0.71%	125.56	845.29	1179.00	43.18%	535.75	25.05%	-7.66%	-32.08%
TATASTEEL	152.00	-0.60	-0.39%	148.61	225.86	184.60	17.66%	122.62	23.96%	-3.14%	-16.68%
TCS	3455.00	-60.30	-1.72%	26.96	939.33	4592.25	24.76%	3056.05	13.05%	-1.29%	-8.27%
TECHM	1711.90	-6.70	-0.39%	12.99	223.32	1807.70	5.30%	1209.40	41.55%	6.28%	25.31%
TITAN	3478.80	73.10	2.15%	9.73	334.43	3867.00	10.04%	2925.00	18.93%	-6.27%	-3.52%
TRENT	5728.00	101.50	1.80%	8.64	493.86	8345.00	31.36%	4488.00	27.63%	0.78%	7.26%
ULTRACEMCO	11400.00	17.00	0.15%	1.57	178.88	12339.00	7.61%	10047.85	13.46%	-4.38%	1.25%
WIPRO	261.85	-1.06	-0.40%	50.17	131.79	324.60	19.33%	228.00	14.85%	3.38%	-44.94%
ETERNAL	247.87	0.62	0.25%	172.95	430.10	304.70	18.65%	184.80	34.13%	0.61%	#VALUE!

Disclaimer / Disclosures

ANALYST CERTIFICATION

I, Mrs. Vaishali Parekh B.com, Research Analyst, author and the name subscribed to this report, hereby certify that all of the views expressed in this research report accurately reflect our views about the subject issuer(s) or securities. We also certify that no part of our compensation was, is, or will be directly or indirectly related to the specific recommendation(s) or view(s) in this report.

Terms & conditions and other disclosures:

Prabhudas Lilladher Pvt. Ltd, Mumbai, India (hereinafter referred to as "PL") is engaged in the business of Stock Broking, Portfolio Manager, Depository Participant and distribution for third party financial products. PL is a subsidiary of Prabhudas Lilladher Advisory Services Pvt Ltd. which has its various subsidiaries engaged in business of commodity broking, investment banking, financial services (margin funding) and distribution of third party financial/other products, details in respect of which are available at www.plindia.com

This document has been prepared by the Research Division of PL and is meant for use by the recipient only as information and is not for circulation. This document is not to be reported or copied or made available to others without prior permission of PL. It should not be considered or taken as an offer to sell or a solicitation to buy or sell any security.

The information contained in this report has been obtained from sources that are considered to be reliable. However, PL has not independently verified the accuracy or completeness of the same. Neither PL nor any of its affiliates, its directors or its employees accepts any responsibility of whatsoever nature for the information, statements and opinion given, made available or expressed herein or for any omission therein.

Recipients of this report should be aware that past performance is not necessarily a guide to future performance and value of investments can go down as well. The suitability or otherwise of any investments will depend upon the recipient's particular circumstances and, in case of doubt, advice should be sought from an independent expert/advisor.

Either PL or its affiliates or its directors or its employees or its representatives or its clients or their relatives may have position(s), make market, act as principal or engage in transactions of securities of companies referred to in this report and they may have used the research material prior to publication.

PL may from time to time solicit or perform investment banking or other services for any company mentioned in this document.

PL is registered as Research Analyst under Securities and Exchange Board of India (Research Analysts) Regulations, 2014 PL submits that no material disciplinary action has been taken on us by any Regulatory Authority impacting Equity Research Analysis activities.

PL or its research analysts or its associates or his relatives do not have any financial interest in the subject company.

PL or its research analysts or its associates or his relatives do not have actual/beneficial ownership of one per cent or more securities of the subject company at the end of the month immediately preceding the date of publication of the research report.

PL or its research analysts or its associates or his relatives do not have any material conflict of interest at the time of publication of the research report.

PL or its associates might have received compensation from the subject company in the past twelve months.

PL or its associates might have managed or co-managed public offering of securities for the subject company in the past twelve months or mandated by the subject company for any other assignment in the past twelve months.

PL or its associates might have received any compensation for investment banking or merchant banking or brokerage services from the subject company in the past twelve months.

PL or its associates might have received any compensation for products or services other than investment banking or merchant banking or brokerage services from the subject company in the past twelve months PL or its associates might have received any compensation or other benefits from the subject company or third party in connection with the research report.

PL encourages independence in research report preparation and strives to minimize conflict in preparation of research report. PL or its analysts did not receive any compensation or other benefits from the subject Company or third party in connection with the preparation of the research report. PL or its Research Analysts do not have any material conflict of interest at the time of publication of this report.

It is confirmed that Mrs.Vaishali Parekh B.com, Research Analyst of this report has not received any compensation from the companies mentioned in the report in the preceding twelve months compensation of our Research Analysts is not based on any specific merchant banking, investment banking or brokerage service transactions.

The Research analysts for this report certifies that all of the views expressed in this report accurately reflect his or her personal views about the subject company or companies and its or their securities, and no part of his or her compensation was, is or will be, directly or indirectly related to specific recommendations or views expressed in this report.

The research analysts for this report has not served as an officer, director or employee of the subject company PL or its research analysts have not engaged in market making activity for the subject company

Our sales people, traders, and other professionals or affiliates may provide oral or written market commentary or trading strategies to our clients that reflect opinions that are contrary to the opinions expressed herein, and our proprietary trading and investing businesses may make investment decisions that are inconsistent with the recommendations expressed herein. In reviewing these materials, you should be aware that any or all of the foregoing, among other things, may give rise to real or potential conflicts of interest.

PL and its associates, their directors and employees may (a) from time to time, have a long or short position in, and buy or sell the securities of the subject company or (b) be engaged in any other transaction involving such securities and earn brokerage or other compensation or act as a market maker in the financial instruments of the subject company or act as an advisor or lender/borrower to the subject company or may have any other potential conflict of interests with respect to any recommendation and other related information and opinions.