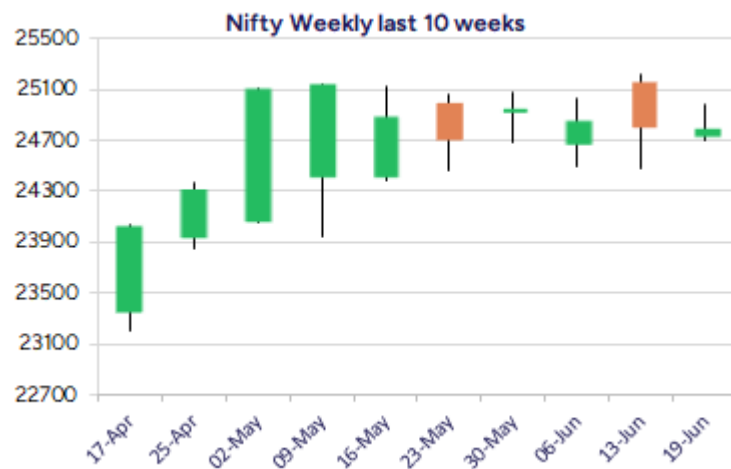
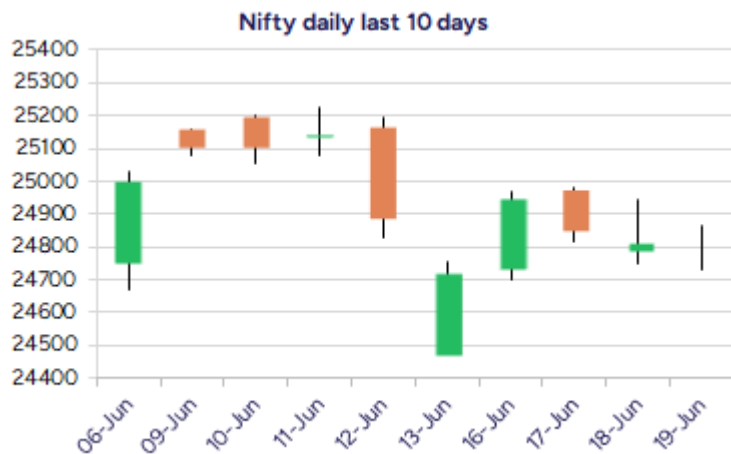


Date: 20th June 2025

* Sensex 81361.87 - 82.79

* Nifty 24793.25 - 18.80

* Bank Nifty 55577.45 - 251.30



*Blue candle → Close rate > Open rate * Red candle → Close rate < Open rate

Market Preview

Nifty holding 24800 zone amid geo-political tensions

Nifty has been sustaining the 24800 zone amidst the geo-political tensions and is precariously placed with major support positioned near the 24500 level. BankNifty has been finding resistance near the 56000 zone and witnessed some profit booking to end near the 55600 level with bias maintained with a cautious approach. The market breadth was weak with the advance decline indicating a ratio of 1:3 at close.

Market Forecast

Nifty daily range 24600-25000

Nifty, amid the geo-political tensions has managed to show resilience sustaining near the 24800 zone for quite some time with very narrow movement witnessed as of now and currently is precariously placed having the crucial and important support zone positioned at 24500 level and at the same time, would need a decisive move above the 25200 level to anticipate for further fresh upward move.

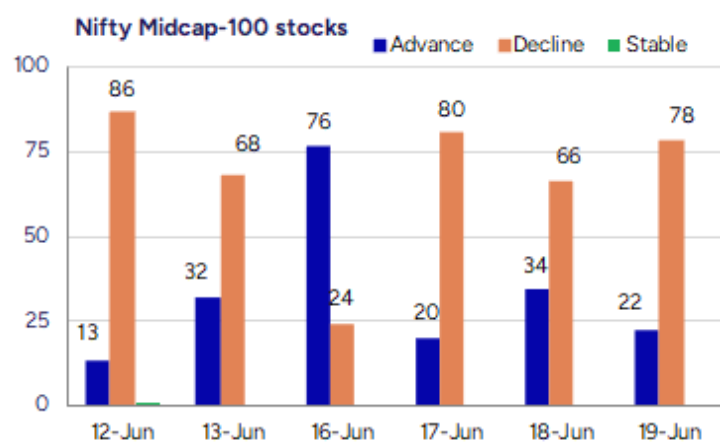
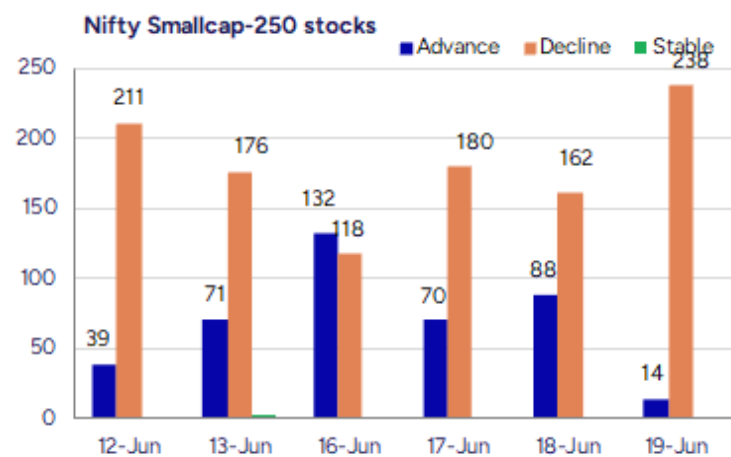
BankNifty, witnessed some profit booking from near the 56000 zone and closed near the 55600 level with overall bias maintained with a cautious approach and anticipating for fresh developments in the coming sessions which shall decide the further directional move of the index. The index has been precariously placed and would need a decisive move above the 56000 zone, as mentioned earlier, to turn the bias positive and at the same time would need to sustain the near-term support positioned near the 55000 level to maintain the overall trend intact.

The support for the day is seen at 24600 levels while the resistance is seen at 25000 levels. BankNifty would have the daily range of 55200-56000 levels.

Indices	Period	Closing	% Chng	Trend	Reversal	2 Sup	1 Sup	Pivot	1 Res	2 Res
Nifty	Daily	24793.25	-0.08%	-6	24901.20	24667	24730	24797	24860	24926
	Weekly	24718.60	-1.14%	-1	24865.20	24055	24387	24804	25136	25553
	Monthly	24750.70	1.71%	1	24390.40	23422	24086	24600	25265	25779
Bank Nifty	Daily	55577.45	-0.45%	-7	55963.60	55198	55388	55665	55855	56132
	Weekly	55527.35	-1.86%	-1	56270.45	54009	54768	55909	56668	57809
	Monthly	55749.70	1.20%	2	53879.10	52648	54199	55036	56587	57424
Sensex	Daily	81361.87	-0.10%	-6	81681.60	80986	81174	81379	81567	81772
	Weekly	81118.60	-1.30%	-1	81900.95	79071	80095	81437	82460	83802
	Monthly	81451.01	1.51%	1	80320.40	77296	79374	81046	83123	84796

Gainers - Losers (Nifty 500 Stocks)

Gainers				Losers			
Company Name	Last Price	% Gain	Volume	Company Name	Last Price	% Loss	Volume
Aakash Explorat	11.64	32.88	6093938	Orient Cement	245	-19.18	2835806
Onelife Capital	15.18	20.96	224401	STL Global	15.62	-13.99	92306
KCK Ind	47.95	20.18	467500	One Mobikwik	234.6	-12.92	2665443
Vinyas	1166.6	16.66	57600	Inventurus Know	1619.8	-12.71	7426167
Aeroflex Ind.	194.87	16.31	64974492	Raj Oil Mills	52.92	-12.57	47502
Aban Offshore	59.29	15.64	1458051	Capital Trust	79.83	-12.06	47585
Chaman Metallic	169.15	13.33	132000	Dreamfolks Ser.	236.05	-11.99	1988567



Nifty Daily chart with RSI indicator



BankNifty Daily chart with RSI indicator



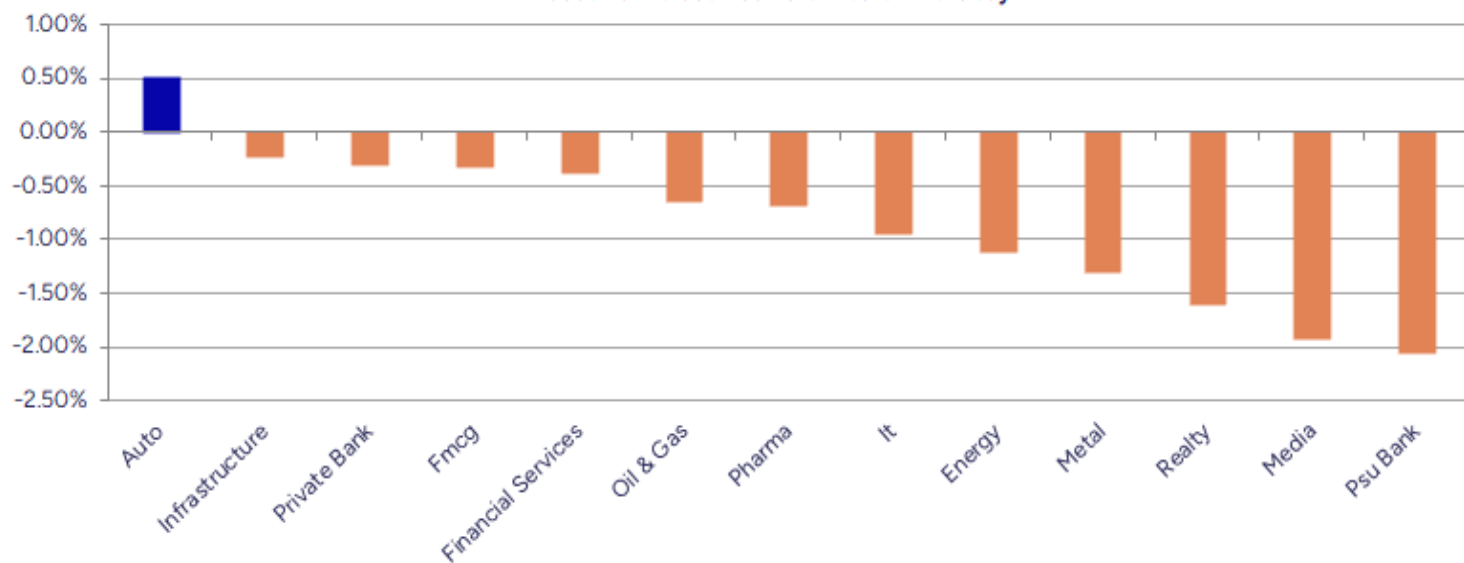
Breakouts - Cross above 200 DMA			
Company Name	LCP	Change %	200 DMA
Aakash Explorat	11.64	17.10	9.94
Aban Offshore	59.29	7.68	55.06
Onelife Capital	15.18	4.12	14.58
Aeroflex Ind.	194.87	2.40	190.31
D.K. Enterprise	73	1.61	71.84
Megastar Foods	245.3	1.55	241.55
Archidply Ind	108.34	1.30	106.95
Rainbow Childre	1440.2	0.94	1426.74
Prime Focus	120.44	0.79	119.5
Sapphire Foods	324.5	0.64	322.43
Indian Metals	717.4	0.60	713.12
Thirumalai Chem	292.48	0.60	290.75
Eternal	249.42	0.60	247.93
Starteck Financ	288.25	0.59	286.55
Airo Lam	115.06	0.41	114.59
Soma Textile	43.24	0.39	43.07
Ipru NiftyAuto	23.95	0.29	23.88
Orissa Bengal C	55.81	0.27	55.66

* Stocks crossing above its Simple Moving Average (200DMA)

Breakdown - Cross below 200 DMA			
Company Name	LCP	Change %	200 DMA
Touchwood Enter	108.38	-10.43	121
Energy Dev	21.22	-8.06	23.08
BPL	89.57	-7.00	96.31
Hind Zinc	437.45	-6.67	468.73
MMTC Ltd	66.55	-6.21	70.96
Birla Cable	185.55	-5.58	196.52
Kriti Nutrients	114.96	-5.44	121.58
Laxmi Cotspin	28.19	-5.28	29.76
Repro India	499.65	-5.27	527.46
Marine Electric	208.24	-4.75	218.62
Sky Gold	327.05	-4.62	342.88
20 Microns	225.29	-4.60	236.16
Zaggle Prepaid	405.5	-4.58	424.97
Ethos	2702.9	-4.58	2832.68
Rachana Infra	40.25	-4.55	42.17
Apeejay Park	157.22	-4.51	164.65
Bharat Gears	87.03	-4.49	91.12
Sree Rayalaseem	611.6	-4.48	640.31

* Stocks crossing below its Simple Moving Average (200DMA)

Sectoral Indices - Gainers Losers for the day



Stocks witnessing a volume surge as compared to their 5 day average volume

Watch out for the stocks that have seen a huge spurt in its share price over the last three days

Volume Shockers - NSE					
Company name	LCP	% Chg	Volume	Avg Vol *	% Chg
Diamond Power	101.53	-2.07	9744543	6800	143194
Sky Gold	327.05	-9.74	5248473	25989	20095
Asahi India	738.45	-1.57	7682820	72514	10495
GTPL Hathway	124.54	6.52	5800161	73039	7841
Privi Special	2451.9	1.17	1863651	26329	6978
Jai Balaji Ind	105.09	0.33	3826747	54390	6936
Puravankara	287.75	-0.54	2992487	51595	5700
Laxmi Goldorna	708.65	1.96	45903	1094	4097
Krishival Foods	395.05	8.83	49500	1200	4025
KCK Industries	47.95	20.18	467500	13600	3338
Aeroflex Ind.	194.87	16.31	64974492	1982984	3177
Shyam Telecom	19.01	10.2	44892	1416	3070
Paras Defence	1632.2	0.17	2309414	74764	2989
Landmark Cars	511.1	3.65	3226585	104539	2986
Shakti Pumps	954.25	-5.39	1107419	38631	2767
Aakash Explorat	11.64	32.88	6093938	223135	2631
Airo Lam	115.06	5.42	240878	9282	2495
Gillanders Arbu	135.13	6.86	727854	33917	2046
Shradha Infra	73.6	-2.04	277494	13166	2008
Sterlite Techno	107.02	-5.05	35013794	1694993	1966

* the Average Volume of last 5 days

Price Shockers - NSE				
Company name	LCP	Prv Close	% Chg	Volume
Aakash Explorat	11.64	8.42	38.24	6093938
Sterlite Techno	107.02	83.33	28.43	35013794
Shyam Telecom	19.01	14.94	27.24	44892
Seya Industries	21.77	17.93	21.42	7953
Onelife Capital	15.18	12.79	18.69	224401
Jindal Photo	983.95	850.1	15.75	7895
Ginni Filaments	49.67	42.95	15.65	287657
Manav Infra Pro	18	15.6	15.38	8000
Bikewo Green	22.7	19.75	14.94	52000
Cyber Media	18.51	16.2	14.26	44329
Mallcom (India)	1253.2	1102.6	13.66	59914
United Drilling	230.15	203.33	13.19	339137
Bharat Rasayan	10140	8988	12.82	10003
Chaman Metallic	169.15	149.95	12.8	132000
Touchwood Enter	108.38	96.49	12.32	29978
Ahlada Engineer	74.45	66.78	11.49	564655
Kanpur Plast	210.86	189.33	11.37	17490
Globe Internati	118.95	107	11.17	18000
Sheela Foam	741.45	667.2	11.13	387974
Silly Monks Ent	17.11	15.41	11.03	242082

* the % price rise of the last 3 days

Symbol	LTP	Chng	% Chng	Volume (lacs)	Turnover (crs.)	52w High	Diff with 52w H	52w Low	Diff with 52w L	365 days % chng	30 days % chng
NIFTY 50	24793.25	-18.80	-0.08%	2745.96	23618.91	26277.35	5.65%	21743.65	14.03%	-0.53%	5.32%
ADANIENT	2414.00	-45.10	-1.83%	6.88	167.31	3345.00	27.83%	2025.00	19.21%	-3.21%	-25.69%
ADANIPTS	1338.00	-34.60	-2.52%	29.50	396.82	1604.95	16.63%	995.65	34.38%	-1.84%	-5.01%
APOLLOHOSP	6992.00	58.50	0.84%	4.62	323.28	7545.35	7.33%	6001.00	16.51%	-0.59%	11.18%
ASIANPAINT	2266.70	-14.70	-0.64%	5.25	119.37	3394.90	33.23%	2124.75	6.68%	-2.14%	-21.83%
AXISBANK	1213.90	-7.10	-0.58%	42.44	518.19	1339.65	9.39%	933.50	30.04%	1.51%	2.44%
BAJAJ-AUTO	8493.00	25.00	0.30%	3.32	282.61	12774.00	33.51%	7089.35	19.80%	-4.33%	-14.62%
BAJAJFINSV	1957.40	-24.00	-1.21%	7.46	147.49	2135.00	8.32%	1523.25	28.50%	-2.79%	24.00%
BAJFINANCE	898.00	-21.00	-2.29%	65.86	596.27	978.80	8.26%	642.50	39.77%	-90.07%	-87.47%
BEL	397.50	-3.00	-0.75%	182.20	727.15	407.50	2.45%	240.25	65.45%	10.10%	25.84%
BHARTIARTL	1874.00	8.10	0.43%	47.12	883.41	1917.00	2.24%	1372.85	36.50%	2.62%	30.63%
CIPLA	1481.00	-17.10	-1.14%	11.24	167.38	1702.05	12.99%	1335.00	10.94%	0.44%	-4.87%
COALINDIA	384.00	-6.35	-1.63%	44.14	170.33	543.55	29.35%	349.25	9.95%	-3.07%	-20.18%
DRREDDY	1330.00	16.70	1.27%	16.54	218.67	1421.49	6.44%	1020.00	30.39%	7.74%	-78.08%
EICHERMOT	5485.00	92.00	1.71%	9.23	505.85	5906.50	7.14%	4508.75	21.65%	-2.48%	9.26%
GRASIM	2681.30	5.90	0.22%	6.10	164.23	2877.75	6.83%	2276.95	17.76%	-1.89%	8.86%
HCLTECH	1706.80	-9.10	-0.53%	25.14	429.27	2012.20	15.18%	1302.75	31.02%	4.02%	19.39%
HDFCBANK	1933.10	-0.80	-0.04%	84.36	1634.56	1996.30	3.17%	1588.05	21.73%	-0.25%	20.28%
HDFCLIFE	759.80	-6.40	-0.84%	30.59	232.22	791.10	3.96%	575.65	31.99%	2.03%	27.45%
HEROMOTOCO	4370.80	12.90	0.30%	4.26	186.41	6246.25	30.03%	3344.00	30.71%	-0.68%	-24.27%
HINDALCO	639.50	-5.85	-0.91%	43.92	281.40	772.65	17.23%	546.45	17.03%	-1.97%	-4.92%
HINDUNILVR	2292.00	-5.30	-0.23%	12.14	279.05	3035.00	24.48%	2136.00	7.30%	-3.58%	-7.60%
ICICIBANK	1410.00	-2.60	-0.18%	88.50	1247.49	1471.60	4.19%	1101.20	28.04%	-2.51%	25.80%
INDUSINDBK	835.50	-15.00	-1.76%	43.64	366.83	1550.00	46.10%	606.00	37.87%	8.48%	-43.60%
INFY	1616.90	-16.00	-0.98%	51.48	833.31	2006.45	19.41%	1307.00	23.71%	4.69%	8.99%
ITC	415.80	-0.10	-0.02%	126.00	525.08	528.50	21.32%	390.15	6.57%	-4.47%	-3.00%
JIOFIN	283.00	-5.15	-1.79%	139.10	397.51	368.30	23.16%	198.65	42.46%	4.01%	-20.66%
JSWSTEEL	992.65	6.30	0.64%	13.91	138.27	1074.90	7.65%	854.15	16.21%	-3.26%	6.59%
KOTAKBANK	2143.10	10.70	0.50%	34.05	731.39	2301.90	6.90%	1679.05	27.64%	1.00%	24.02%
LT	3615.60	14.10	0.39%	15.81	572.38	3963.50	8.78%	2965.30	21.93%	0.04%	-2.38%
M&M	3089.00	47.90	1.58%	24.83	765.36	3270.95	5.56%	2425.00	27.38%	-2.78%	2.67%
MARUTI	12782.00	34.00	0.27%	3.39	433.75	13680.00	6.56%	10725.00	19.18%	-1.86%	1.49%
NESTLEIND	2313.30	-27.50	-1.17%	7.37	171.44	2778.00	16.73%	2110.00	9.64%	-2.78%	-8.22%
NTPC	328.85	-3.55	-1.07%	116.10	384.26	448.45	26.67%	292.80	12.31%	-3.69%	-10.08%
ONGC	251.00	0.64	0.26%	107.89	270.45	345.00	27.25%	205.00	22.44%	1.53%	-9.22%
POWERGRID	286.05	-1.25	-0.44%	135.74	388.64	366.25	21.90%	247.30	15.67%	-5.51%	-13.41%
RELIANCE	1428.00	-2.10	-0.15%	100.07	1434.83	1608.80	11.24%	1114.85	28.09%	-0.74%	-51.72%
SBILIFE	1790.00	-7.20	-0.40%	5.38	96.40	1936.00	7.54%	1372.55	30.41%	1.54%	21.96%
SBIN	782.60	-9.30	-1.17%	118.24	929.66	899.00	12.95%	680.00	15.09%	-0.39%	-6.27%
SHRIRAMFIN	648.30	-13.80	-2.08%	33.43	219.84	730.45	11.25%	493.35	31.41%	-2.32%	-76.60%
SUNPHARMA	1644.40	-3.60	-0.22%	16.96	279.38	1960.35	16.12%	1460.90	12.56%	-4.75%	8.35%
TATACONSUM	1088.00	22.80	2.14%	28.16	305.27	1250.10	12.97%	882.90	23.23%	-7.32%	-5.48%
TATAMOTORS	671.40	1.15	0.17%	108.94	731.49	1179.00	43.05%	535.75	25.32%	-8.12%	-32.02%
TATASTEEL	150.51	-1.60	-1.05%	201.41	304.45	184.60	18.47%	122.62	22.75%	-3.47%	-16.02%
TCS	3420.00	-31.40	-0.91%	26.73	915.77	4592.25	25.53%	3056.05	11.91%	-1.92%	-9.53%
TECHM	1678.00	-32.70	-1.91%	30.57	513.74	1807.70	7.17%	1209.40	38.75%	7.07%	24.75%
TITAN	3500.20	32.40	0.93%	10.22	358.43	3867.00	9.49%	2925.00	19.66%	-4.14%	-3.38%
TRENT	5700.00	-35.00	-0.61%	8.87	507.23	8345.00	31.70%	4488.00	27.01%	3.31%	7.04%
ULTRACEMCO	11359.00	-47.00	-0.41%	1.58	180.30	12339.00	7.94%	10047.85	13.05%	-4.38%	2.58%
WIPRO	265.00	3.41	1.30%	141.84	375.18	324.60	18.36%	228.00	16.23%	3.91%	-46.82%
ETERNAL	248.25	-0.16	-0.06%	323.46	809.49	304.70	18.53%	184.80	34.33%	4.36%	#VALUE!

Disclaimer / Disclosures

ANALYST CERTIFICATION

I, Mrs. Vaishali Parekh B.com, Research Analyst, author and the name subscribed to this report, hereby certify that all of the views expressed in this research report accurately reflect our views about the subject issuer(s) or securities. We also certify that no part of our compensation was, is, or will be directly or indirectly related to the specific recommendation(s) or view(s) in this report.

Terms & conditions and other disclosures:

Prabhudas Lilladher Pvt. Ltd, Mumbai, India (hereinafter referred to as "PL") is engaged in the business of Stock Broking, Portfolio Manager, Depository Participant and distribution for third party financial products. PL is a subsidiary of Prabhudas Lilladher Advisory Services Pvt Ltd. which has its various subsidiaries engaged in business of commodity broking, investment banking, financial services (margin funding) and distribution of third party financial/other products, details in respect of which are available at www.plindia.com

This document has been prepared by the Research Division of PL and is meant for use by the recipient only as information and is not for circulation. This document is not to be reported or copied or made available to others without prior permission of PL. It should not be considered or taken as an offer to sell or a solicitation to buy or sell any security.

The information contained in this report has been obtained from sources that are considered to be reliable. However, PL has not independently verified the accuracy or completeness of the same. Neither PL nor any of its affiliates, its directors or its employees accepts any responsibility of whatsoever nature for the information, statements and opinion given, made available or expressed herein or for any omission therein.

Recipients of this report should be aware that past performance is not necessarily a guide to future performance and value of investments can go down as well. The suitability or otherwise of any investments will depend upon the recipient's particular circumstances and, in case of doubt, advice should be sought from an independent expert/advisor.

Either PL or its affiliates or its directors or its employees or its representatives or its clients or their relatives may have position(s), make market, act as principal or engage in transactions of securities of companies referred to in this report and they may have used the research material prior to publication.

PL may from time to time solicit or perform investment banking or other services for any company mentioned in this document.

PL is registered as Research Analyst under Securities and Exchange Board of India (Research Analysts) Regulations, 2014 PL submits that no material disciplinary action has been taken on us by any Regulatory Authority impacting Equity Research Analysis activities.

PL or its research analysts or its associates or his relatives do not have any financial interest in the subject company.

PL or its research analysts or its associates or his relatives do not have actual/beneficial ownership of one per cent or more securities of the subject company at the end of the month immediately preceding the date of publication of the research report.

PL or its research analysts or its associates or his relatives do not have any material conflict of interest at the time of publication of the research report.

PL or its associates might have received compensation from the subject company in the past twelve months.

PL or its associates might have managed or co-managed public offering of securities for the subject company in the past twelve months or mandated by the subject company for any other assignment in the past twelve months.

PL or its associates might have received any compensation for investment banking or merchant banking or brokerage services from the subject company in the past twelve months.

PL or its associates might have received any compensation for products or services other than investment banking or merchant banking or brokerage services from the subject company in the past twelve months PL or its associates might have received any compensation or other benefits from the subject company or third party in connection with the research report.

PL encourages independence in research report preparation and strives to minimize conflict in preparation of research report. PL or its analysts did not receive any compensation or other benefits from the subject Company or third party in connection with the preparation of the research report. PL or its Research Analysts do not have any material conflict of interest at the time of publication of this report.

It is confirmed that Mrs.Vaishali Parekh B.com, Research Analyst of this report has not received any compensation from the companies mentioned in the report in the preceding twelve months compensation of our Research Analysts is not based on any specific merchant banking, investment banking or brokerage service transactions.

The Research analysts for this report certifies that all of the views expressed in this report accurately reflect his or her personal views about the subject company or companies and its or their securities, and no part of his or her compensation was, is or will be, directly or indirectly related to specific recommendations or views expressed in this report.

The research analysts for this report has not served as an officer, director or employee of the subject company PL or its research analysts have not engaged in market making activity for the subject company

Our sales people, traders, and other professionals or affiliates may provide oral or written market commentary or trading strategies to our clients that reflect opinions that are contrary to the opinions expressed herein, and our proprietary trading and investing businesses may make investment decisions that are inconsistent with the recommendations expressed herein. In reviewing these materials, you should be aware that any or all of the foregoing, among other things, may give rise to real or potential conflicts of interest.

PL and its associates, their directors and employees may (a) from time to time, have a long or short position in, and buy or sell the securities of the subject company or (b) be engaged in any other transaction involving such securities and earn brokerage or other compensation or act as a market maker in the financial instruments of the subject company or act as an advisor or lender/borrower to the subject company or may have any other potential conflict of interests with respect to any recommendation and other related information and opinions.