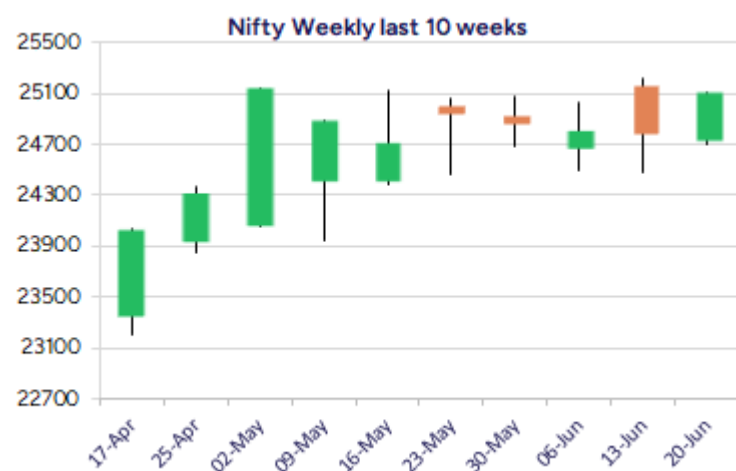
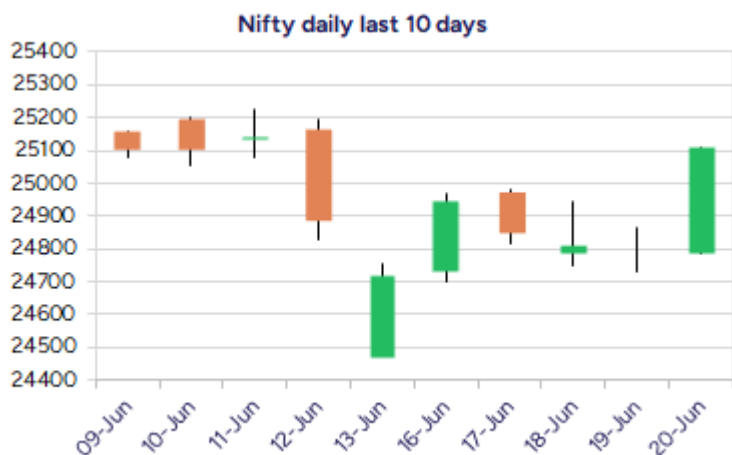


Date: 23rd June 2025

* Sensex 82408.17 + 1046.30

* Nifty 25112.40 + 319.15

* Bank Nifty 56252.85 + 675.40



*Blue candle → Close rate > Open rate * Red candle → Close rate < Open rate

Market Preview

Nifty ends above 25000 zone

Nifty recovered strongly to move past the 25000 zone decisively anticipating for positive developments in the coming days. BankNifty moved past the 56000 zone with frontline banking stocks recovering to improve the bias and can expect for further rise in the coming sessions. The market breadth turned strong with the advance decline indicating a ratio of 3:1 at close.

Market Forecast

Nifty daily range 25000-25300

Nifty, witnessed a strong move during the session to move past the 25000 zone decisively on the back of easing out of the geo-political tensions temporarily as of now, with strong recovery visible across the board. The index would have the near-term hurdle at 25200-25250 zone above which one can expect for fresh upward to retest the previous peak zone at 26277 levels in the coming days. At the same time, the 24700 level would be the crucial near-term support which needs to be sustained as of now to maintain the bias intact.

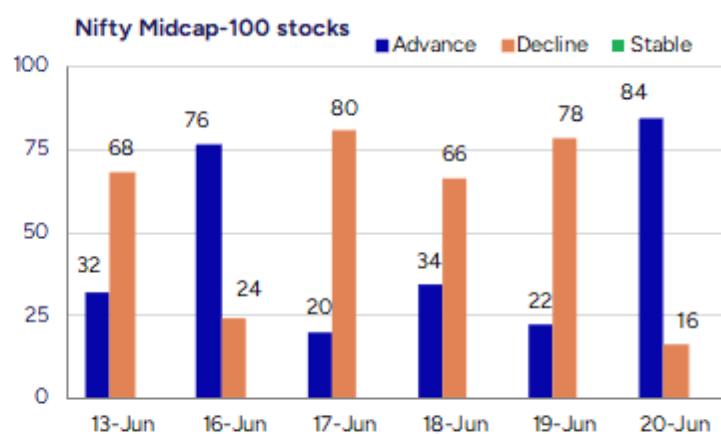
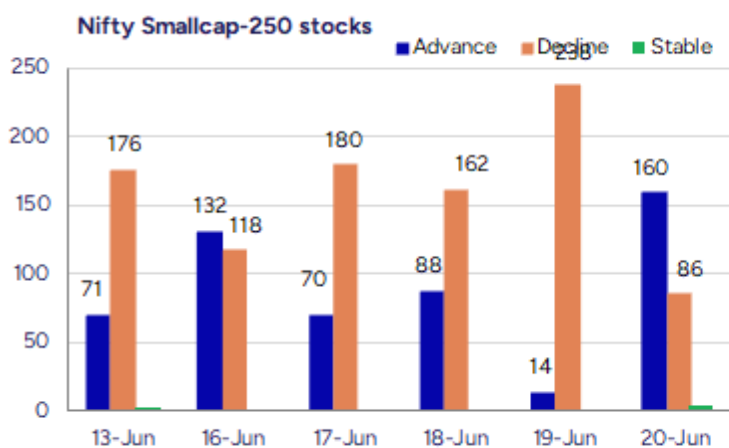
BankNifty, bounced back once again to move past the hurdle of 56000 zone with bias improving and expecting for further rise in the coming days with sentiments expected to ease out for the next coming sessions and would need to breach above the near-term resistance zone at 57000 level to further strengthen the trend. On the downside, the 55000 zone would be the important near-term support which needs to be sustained as of now.

The support for the day is seen at 25000 levels while the resistance is seen at 25300 levels. BankNifty would have the daily range of 55700-57000 levels.

Indices	Period	Closing	% Chng	Trend	Reversal	2 Sup	1 Sup	Pivot	1 Res	2 Res
Nifty	Daily	25112.40	1.29%	1	24925.80	24697	24905	24991	25199	25286
	Weekly	25112.40	1.59%	1	24980.40	24557	24835	24984	25262	25412
	Monthly	24750.70	1.71%	1	24390.40	23422	24086	24600	25265	25779
Bank Nifty	Daily	56252.85	1.22%	1	55957.95	55345	55799	56021	56475	56697
	Weekly	56252.85	1.31%	-2	56195.25	55045	55649	55986	56590	56927
	Monthly	55749.70	1.20%	2	53879.10	52648	54199	55036	56587	57424
Sensex	Daily	82408.17	1.29%	1	81752.70	81035	81722	82010	82696	82984
	Weekly	82408.17	1.59%	1	82113.60	80504	81456	81974	82926	83445
	Monthly	81451.01	1.51%	1	80320.40	77296	79374	81046	83123	84796

Gainers - Losers (Nifty 500 Stocks)

Gainers				Losers			
Company Name	Last Price	% Gain	Volume	Company Name	Last Price	% Loss	Volume
Megastar Foods	284.8	16.1	247664	D.K. Enterprise	67.1	-8.08	1500
Indian Card	318.5	13.24	187399	Winny Immi	147.65	-7.72	4500
Touchwood Enter	122.13	12.69	387136	Sunrest	56.7	-7.05	4800
Compucom Soft	22.88	12.27	525527	Concord Biotech	1837.3	-6.89	1172508
Waaree Energies	2989	11.9	13557333	Eris Life	1626.6	-6.29	980432
Quality Power	572.35	10.68	2969609	KCK Ind	44.95	-6.26	497500
Bhagyanagar Ind	78.47	10.44	97392	Emerald Tyre	112.1	-5.8	26400



Nifty Daily chart with RSI indicator



BankNifty Daily chart with RSI indicator



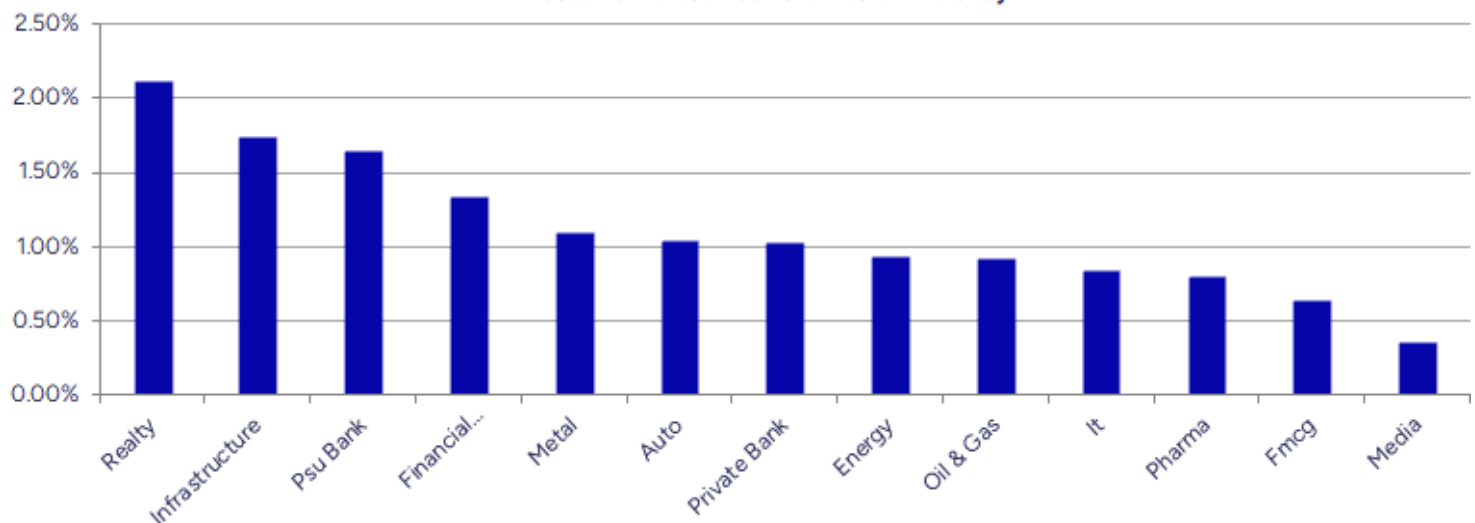
Breakouts - Cross above 200 DMA			
Company Name	LCP	Change %	200 DMA
Indian Card	318.5	10.38	288.56
CSL Fin	339.75	4.50	325.13
Aarey Drugs	56.95	4.04	54.74
Ind-Swift Labs	106.5	2.94	103.46
Kaya	347.95	2.90	338.13
Iris Clothings	61.48	2.71	59.86
Jio Financial	294.25	2.69	286.53
Seshasayee Pape	306.45	2.66	298.52
Tata Inv Corp	6631	2.55	6466.04
HUDCO	227.15	2.51	221.59
Kriti Ind	157.75	2.12	154.47
Madhya Pradesh	37.25	1.92	36.55
JB Chemicals	1772.6	1.88	1739.96
Hisar Metal	197.76	1.85	194.17
Rattanindia Ent	59.12	1.76	58.1
Bliss GVS	138.44	1.70	136.12
Archean Chem	633.05	1.59	623.12
Godrej Agrovat	762.5	1.59	750.58

* Stocks crossing above its Simple Moving Average (200DMA)

Breakdown - Cross below 200 DMA			
Company Name	LCP	Change %	200 DMA
D.K. Enterprise	67.1	-6.74	71.95
Prime Focus	114.9	-3.69	119.3
Cera Sanitary	6604	-3.56	6848.13
Concord Biotech	1837.3	-3.18	1897.7
Airo Lam	111.19	-2.75	114.34
Slone Infosyste	252.15	-2.45	258.48
Thirumalai Chem	283.77	-2.23	290.23
Reliable Data S	74.76	-2.22	76.46
SignatureGlobal	1243	-2.20	1270.91
Jupiter Life	1458.8	-1.35	1478.81
The Hi-Tech Gea	728.5	-1.28	737.94
Polyplex Corp	1208.8	-1.26	1224.17
Orissa Bengal C	55.01	-1.11	55.63
Five-Star Busin	722.2	-0.68	727.14
Esprit Stones	109.25	-0.52	109.82
Pyramid Techno	178.95	-0.48	179.82
Indian Metals	711.2	-0.33	713.59
Global Health	1131.5	-0.29	1134.82

* Stocks crossing below its Simple Moving Average (200DMA)

Sectoral Indices - Gainers Losers for the day



Stocks witnessing a volume surge as compared to their 5 day average volume

Watch out for the stocks that have seen a huge spurt in its share price over the last three days

Volume Shockers - NSE					
Company name	LCP	% Chg	Volume	Avg Vol *	% Chg
Diamond Power	103.74	2.18	5198879	6800	76350
Sky Gold	318.05	-2.75	2956526	25989	11276
Touchwood Enter	122.13	12.69	387136	3929	9753
Jai Balaji Ind	100.29	-4.57	5226598	54390	9509
Krishival Foods	414.8	5	83088	1200	6824
Fineotex Chem	277.71	5.17	11084968	215421	5046
Gallantt Ispat	506.4	7.61	1654943	33914	4780
Aakash Explorat	12.22	4.98	10849708	223135	4762
Shyam Telecom	18.05	-5.05	61298	1416	4228
Megastar Foods	284.8	16.1	247664	6466	3730
Aeroflex Ind.	204.47	4.93	75264184	1982984	3696
KCK Industries	44.95	-6.26	497500	13600	3558
Jupiter Life	1458.8	-3.76	329097	11977	2648
Dreamfolks Ser.	228.6	-3.16	4569057	179105	2451
SOLARA ACTIVE P	529.95	1.09	2066859	81733	2429
BEML	4639.5	8.2	4561045	197462	2210
Endurance Techn	2576	6.67	3435399	157277	2084
Asahi India	711	-3.72	1582824	72514	2083
Shakti Pumps	964.95	1.12	839214	38631	2072
Shradha Infra	73.79	0.26	278396	13166	2014

* the Average Volume of last 5 days

Price Shockers - NSE				
Company name	LCP	Prv Close	% Chg	Volume
Sumeet Ind	55.96	4.89	1044.38	0
Aakash Explorat	12.22	8.76	39.5	10849708
Onelife Capital	16.69	12.55	32.99	263710
Megastar Foods	284.8	237.2	20.07	247664
Jindal Photo	1033.1	892.5	15.75	31398
Sri Adhikari	719.25	621.4	15.75	4947
Sri Adhikari	719.25	621.4	15.75	4947
Seya Industries	22.85	19.76	15.64	5807
Manav Infra Pro	18.9	16.35	15.6	4000
Gallantt Ispat	506.4	445.5	13.67	1654943
Gillanders Arbu	143.04	126.46	13.11	448440
Jindal Poly Inv	950.3	840.95	13	98441
Securecloud Tec	26.38	23.59	11.83	19958
Aban Offshore	57.29	51.27	11.74	589455
Visa Steel	32	28.68	11.58	11370
Softtech Engine	374.4	335.9	11.46	174637
Punjab Chemical	1197	1078	11.04	98697
Felix Industrie	179.95	163	10.4	53000
ASCOM	84.35	76.55	10.19	0
Euro Panel	177.4	161	10.19	23000

* the % price rise of the last 3 days

Symbol	LTP	Chng	% Chng	Volume (lacs)	Turnover (crs.)	52w High	Diff with 52w H	52w Low	Diff with 52w L	365 days % chng	30 days % chng
NIFTY 50	25112.40	319.15	1.29%	5745.51	55774.67	26277.35	4.43%	21743.65	15.49%	0.44%	5.43%
ADANIENT	2449.60	29.00	1.20%	30.03	734.87	3315.00	26.11%	2025.00	20.97%	-3.24%	-25.79%
ADANIPTS	1353.90	15.90	1.19%	45.42	610.50	1604.95	15.64%	995.65	35.98%	-3.37%	-7.62%
APOLLOHOSP	7055.00	45.50	0.65%	3.78	266.54	7545.35	6.50%	6001.00	17.56%	1.41%	13.54%
ASIANPAINT	2279.50	11.50	0.51%	19.45	444.14	3394.90	32.86%	2124.75	7.28%	-1.20%	-21.57%
AXISBANK	1216.10	-1.40	-0.11%	46.52	567.73	1339.65	9.22%	933.50	30.27%	1.81%	-0.75%
BAJAJ-AUTO	8345.00	59.00	0.71%	5.68	473.36	12774.00	34.67%	7089.35	17.71%	-0.81%	-12.28%
BAJAJFINSV	1976.80	9.20	0.47%	19.31	382.75	2135.00	7.41%	1523.25	29.78%	-1.87%	23.37%
BAJFINANCE	902.00	1.50	0.17%	143.18	1288.13	978.80	7.85%	642.50	40.39%	-90.08%	-87.55%
BEL	407.05	8.50	2.13%	1225.51	4994.06	410.00	0.72%	240.25	69.43%	9.55%	28.86%
BHARTIARTL	1934.00	57.00	3.04%	162.26	3128.24	1949.00	0.77%	1372.85	40.87%	3.76%	34.81%
CIPLA	1493.00	9.00	0.61%	19.17	287.53	1702.05	12.28%	1335.00	11.84%	2.04%	-4.86%
COALINDIA	388.00	3.75	0.98%	65.31	253.82	543.55	28.62%	349.25	11.10%	-5.84%	-19.60%
DRREDDY	1322.80	-3.30	-0.25%	18.44	244.40	1421.49	6.94%	1020.00	29.69%	8.32%	-77.74%
EICHERMOT	5512.00	18.50	0.34%	7.77	428.60	5906.50	6.68%	4508.75	22.25%	1.97%	12.55%
GRASIM	2702.70	9.50	0.35%	12.32	334.27	2877.75	6.08%	2276.95	18.70%	-1.01%	10.05%
HCLTECH	1736.90	23.00	1.34%	27.20	472.11	2012.20	13.68%	1302.75	33.33%	4.61%	18.54%
HDFCBANK	1963.10	27.80	1.44%	164.50	3224.78	1996.30	1.66%	1588.05	23.62%	1.07%	16.74%
HDFCLIFE	778.00	18.25	2.40%	52.56	408.76	791.10	1.66%	575.65	35.15%	1.98%	27.78%
HEROMOTOCO	4331.10	-53.20	-1.21%	11.59	499.50	6246.25	30.66%	3344.00	29.52%	3.36%	-22.37%
HINDALCO	644.30	2.95	0.46%	71.67	465.13	772.65	16.61%	546.45	17.91%	-3.23%	-3.18%
HINDUNILVR	2302.00	7.80	0.34%	26.84	618.56	3035.00	24.15%	2136.00	7.77%	-2.00%	-6.63%
ICICIBANK	1426.40	15.10	1.07%	124.06	1769.78	1471.60	3.07%	1126.15	26.66%	-1.87%	23.32%
INDUSINDBK	844.00	6.50	0.78%	209.61	1761.10	1550.00	45.55%	606.00	39.27%	7.06%	-45.20%
INFY	1618.00	-0.40	-0.02%	91.99	1491.40	2006.45	19.36%	1307.00	23.79%	3.70%	7.08%
ITC	417.25	1.25	0.30%	131.73	551.23	528.50	21.05%	390.15	6.95%	-4.35%	-1.81%
JIOFIN	293.50	9.40	3.31%	210.60	614.19	368.30	20.31%	198.65	47.75%	4.66%	-20.71%
JSWSTEEL	1007.55	11.50	1.15%	96.97	976.30	1074.90	6.27%	854.15	17.96%	-1.64%	8.86%
KOTAKBANK	2170.90	24.50	1.14%	33.72	728.96	2301.90	5.69%	1679.05	29.29%	2.69%	22.88%
LT	3658.00	36.90	1.02%	25.75	941.55	3963.50	7.71%	2965.30	23.36%	1.49%	0.87%
M&M	3189.90	95.10	3.07%	83.15	2638.87	3270.95	2.48%	2425.00	31.54%	1.02%	5.49%
MARUTI	12787.00	-19.00	-0.15%	6.52	833.84	13680.00	6.53%	10725.00	19.23%	1.33%	4.61%
NESTLEIND	2383.10	64.20	2.77%	114.70	2706.10	2778.00	14.22%	2110.00	12.94%	-1.68%	-8.20%
NTPC	334.20	4.15	1.26%	165.84	552.09	448.45	25.48%	292.80	14.14%	-3.66%	-8.95%
ONGC	251.20	-0.36	-0.14%	158.87	399.95	345.00	27.19%	205.00	22.54%	0.92%	-7.36%
POWERGRID	292.70	6.25	2.18%	330.12	965.95	366.25	20.08%	247.30	18.36%	-3.84%	-12.48%
RELIANCE	1464.10	30.80	2.15%	290.07	4242.79	1608.80	8.99%	1114.85	31.33%	0.61%	-50.87%
SBILIFE	1810.70	21.30	1.19%	16.69	302.27	1936.00	6.47%	1372.55	31.92%	1.80%	23.48%
SBIN	795.25	10.15	1.29%	113.67	903.00	899.00	11.54%	680.00	16.95%	-0.07%	-7.92%
SHRIRAMFIN	663.95	11.75	1.80%	74.41	494.53	730.45	9.10%	493.35	34.58%	-0.93%	-76.63%
SUNPHARMA	1663.20	15.60	0.95%	25.68	427.18	1960.35	15.16%	1460.90	13.85%	-3.53%	9.55%
TATACONSUM	1090.90	2.60	0.24%	20.84	228.45	1250.10	12.73%	882.90	23.56%	-3.56%	-1.56%
TATAMOTORS	675.50	3.20	0.48%	113.90	769.48	1179.00	42.71%	535.75	26.08%	-6.48%	-31.21%
TATASTEEL	151.70	0.70	0.46%	299.44	455.18	182.95	17.08%	122.62	23.72%	-4.85%	-16.12%
TCS	3429.10	5.10	0.15%	23.51	806.82	4592.25	25.33%	3056.05	12.21%	-2.12%	-9.94%
TECHM	1696.00	12.00	0.71%	34.25	580.28	1807.70	6.18%	1209.40	40.23%	6.85%	21.93%
TITAN	3510.40	5.00	0.14%	29.40	1034.76	3867.00	9.22%	2925.00	20.01%	-2.10%	1.24%
TRENT	5950.00	226.50	3.96%	104.24	6139.43	8345.00	28.70%	4488.00	32.58%	5.03%	6.85%
ULTRACEMCO	11475.00	55.00	0.48%	6.30	721.74	12339.00	7.00%	10047.85	14.20%	-2.37%	3.86%
WIPRO	265.80	0.22	0.08%	129.04	343.48	324.60	18.11%	228.00	16.58%	6.36%	-46.43%
ETERNAL	253.00	3.58	1.44%	501.93	1266.16	304.70	16.97%	189.56	33.47%	9.26%	#VALUE!

Disclaimer / Disclosures

ANALYST CERTIFICATION

I, Mrs. Vaishali Parekh B.com, Research Analyst, author and the name subscribed to this report, hereby certify that all of the views expressed in this research report accurately reflect our views about the subject issuer(s) or securities. We also certify that no part of our compensation was, is, or will be directly or indirectly related to the specific recommendation(s) or view(s) in this report.

Terms & conditions and other disclosures:

Prabhudas Lilladher Pvt. Ltd, Mumbai, India (hereinafter referred to as "PL") is engaged in the business of Stock Broking, Portfolio Manager, Depository Participant and distribution for third party financial products. PL is a subsidiary of Prabhudas Lilladher Advisory Services Pvt Ltd. which has its various subsidiaries engaged in business of commodity broking, investment banking, financial services (margin funding) and distribution of third party financial/other products, details in respect of which are available at www.plindia.com

This document has been prepared by the Research Division of PL and is meant for use by the recipient only as information and is not for circulation. This document is not to be reported or copied or made available to others without prior permission of PL. It should not be considered or taken as an offer to sell or a solicitation to buy or sell any security.

The information contained in this report has been obtained from sources that are considered to be reliable. However, PL has not independently verified the accuracy or completeness of the same. Neither PL nor any of its affiliates, its directors or its employees accepts any responsibility of whatsoever nature for the information, statements and opinion given, made available or expressed herein or for any omission therein.

Recipients of this report should be aware that past performance is not necessarily a guide to future performance and value of investments can go down as well. The suitability or otherwise of any investments will depend upon the recipient's particular circumstances and, in case of doubt, advice should be sought from an independent expert/advisor.

Either PL or its affiliates or its directors or its employees or its representatives or its clients or their relatives may have position(s), make market, act as principal or engage in transactions of securities of companies referred to in this report and they may have used the research material prior to publication.

PL may from time to time solicit or perform investment banking or other services for any company mentioned in this document.

PL is registered as Research Analyst under Securities and Exchange Board of India (Research Analysts) Regulations, 2014 PL submits that no material disciplinary action has been taken on us by any Regulatory Authority impacting Equity Research Analysis activities.

PL or its research analysts or its associates or his relatives do not have any financial interest in the subject company.

PL or its research analysts or its associates or his relatives do not have actual/beneficial ownership of one per cent or more securities of the subject company at the end of the month immediately preceding the date of publication of the research report.

PL or its research analysts or its associates or his relatives do not have any material conflict of interest at the time of publication of the research report.

PL or its associates might have received compensation from the subject company in the past twelve months.

PL or its associates might have managed or co-managed public offering of securities for the subject company in the past twelve months or mandated by the subject company for any other assignment in the past twelve months.

PL or its associates might have received any compensation for investment banking or merchant banking or brokerage services from the subject company in the past twelve months.

PL or its associates might have received any compensation for products or services other than investment banking or merchant banking or brokerage services from the subject company in the past twelve months PL or its associates might have received any compensation or other benefits from the subject company or third party in connection with the research report.

PL encourages independence in research report preparation and strives to minimize conflict in preparation of research report. PL or its analysts did not receive any compensation or other benefits from the subject Company or third party in connection with the preparation of the research report. PL or its Research Analysts do not have any material conflict of interest at the time of publication of this report.

It is confirmed that Mrs.Vaishali Parekh B.com, Research Analyst of this report has not received any compensation from the companies mentioned in the report in the preceding twelve months compensation of our Research Analysts is not based on any specific merchant banking, investment banking or brokerage service transactions.

The Research analysts for this report certifies that all of the views expressed in this report accurately reflect his or her personal views about the subject company or companies and its or their securities, and no part of his or her compensation was, is or will be, directly or indirectly related to specific recommendations or views expressed in this report.

The research analysts for this report has not served as an officer, director or employee of the subject company PL or its research analysts have not engaged in market making activity for the subject company

Our sales people, traders, and other professionals or affiliates may provide oral or written market commentary or trading strategies to our clients that reflect opinions that are contrary to the opinions expressed herein, and our proprietary trading and investing businesses may make investment decisions that are inconsistent with the recommendations expressed herein. In reviewing these materials, you should be aware that any or all of the foregoing, among other things, may give rise to real or potential conflicts of interest.

PL and its associates, their directors and employees may (a) from time to time, have a long or short position in, and buy or sell the securities of the subject company or (b) be engaged in any other transaction involving such securities and earn brokerage or other compensation or act as a market maker in the financial instruments of the subject company or act as an advisor or lender/borrower to the subject company or may have any other potential conflict of interests with respect to any recommendation and other related information and opinions.