

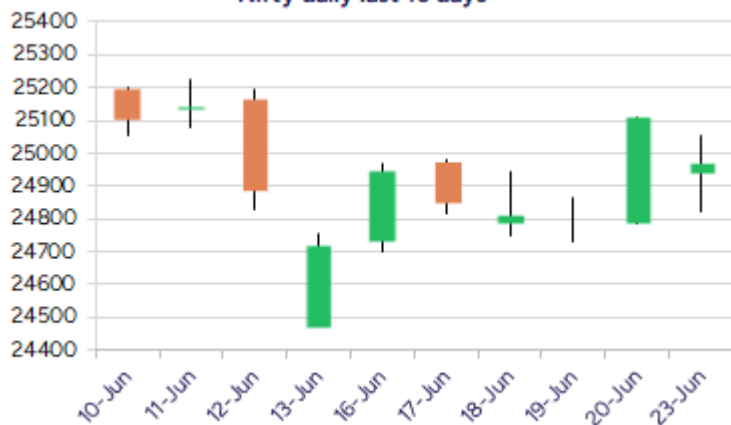
Date: 24th June 2025

* Sensex 81896.79 -511.38

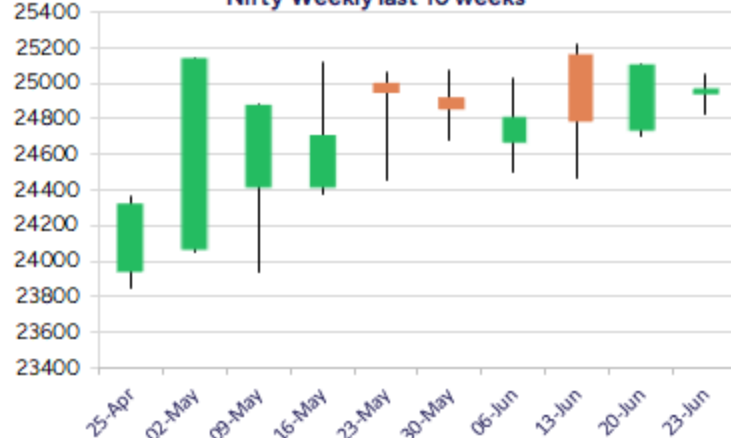
* Nifty 24971.90 -140.50

* Bank Nifty 56059.35 -193.50

Nifty daily last 10 days



Nifty Weekly last 10 weeks



*Blue candle → Close rate > Open rate * Red candle → Close rate < Open rate

Market Preview

Nifty slips below 25000 zone

Nifty witnessed a volatile session moving below the 25000 zone amid the escalating geo-political tensions with bias and sentiment precariously placed. BankNifty witnessed fluctuations and managed to close near the 56000 zone with sentiment maintained with a very cautious approach. The market breadth was overall flat with the advance decline indicating a neutral ratio at close.

Market Forecast

Nifty daily range 24800-25200

Nifty, after opening on a weak note near 24950 zone witnessed fluctuations during the session on the back of geo-political turmoil and closed in the red below the 25000 zone with sentiment maintained with a very cautious approach. The index has witnessed a strong resistance near the 25200 zone whereas on the downside, the 24700 level would be the crucial near-term support which needs to be sustained as of now to maintain the overall bias intact.

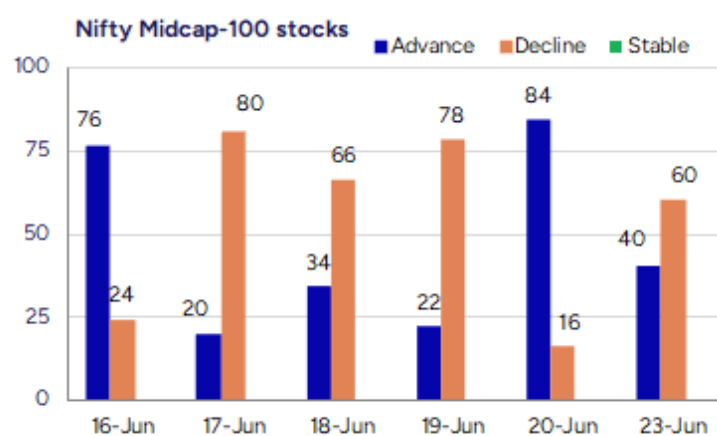
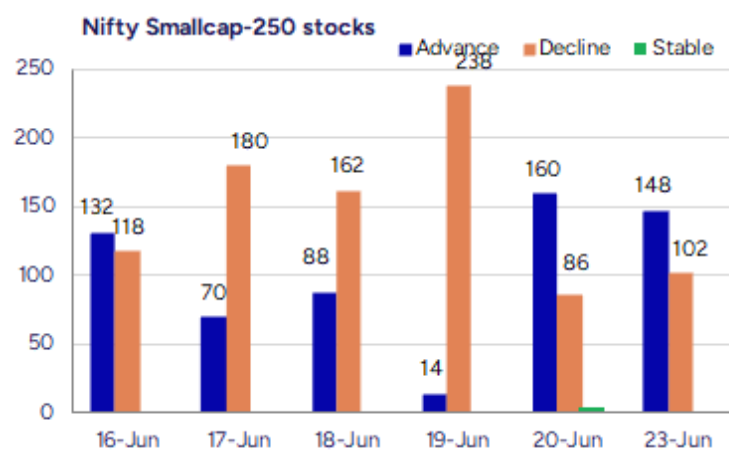
BankNifty, opening on the lower end remained passive near the 55900 zone whereas post lunch session witnessed some pullback to move past the 56000 level to minimise the losses. The index needs to indicate a clear breakout above the 56200-56300 zone as of now to trigger for fresh upward move with 55000 zone, on the downside maintained as the important and crucial near-term support which needs to be sustained as of now.

The support for the day is seen at 24800 levels while the resistance is seen at 25200 levels. BankNifty would have the daily range of 55500-56500 levels.

Indices	Period	Closing	% Chng	Trend	Reversal	2 Sup	1 Sup	Pivot	1 Res	2 Res
Nifty	Daily	24971.90	-0.56%	2	24929.65	24719	24846	24951	25078	25183
	Weekly	25112.40	1.59%	1	24980.40	24557	24835	24984	25262	25412
	Monthly	24750.70	1.71%	1	24390.40	23422	24086	24600	25265	25779
Bank Nifty	Daily	56059.35	-0.34%	2	55934.90	55570	55815	56024	56269	56478
	Weekly	56252.85	1.31%	-2	56195.25	55045	55649	55986	56590	56927
	Monthly	55749.70	1.20%	2	53879.10	52648	54199	55036	56587	57424
Sensex	Daily	81896.79	-0.62%	2	81765.90	81155	81526	81848	82219	82541
	Weekly	82408.17	1.59%	1	82113.60	80504	81456	81974	82926	83445
	Monthly	81451.01	1.51%	1	80320.40	77296	79374	81046	83123	84796

Gainers - Losers (Nifty 500 Stocks)

Gainers				Losers			
Company Name	Last Price	% Gain	Volume	Company Name	Last Price	% Loss	Volume
Tamil Telecom	11.76	20	472454	Osia Hyper Reta	18	-10.04	1433705
Ishan Dyes	53.63	19.82	492860	Indifra	16.1	-8	2000
Zee Media	15.81	18.25	51233040	Silly Monks Ent	15.54	-7.5	90571
Borosil Sci	163.68	18.25	1555686	Paramatrix Tech	90	-7.36	2400
Innovana	503.8	13.83	168805	Munjal Showa	123.54	-6.95	885337
Zee Entertain	149.66	12.46	163843969	Chetana Educati	82.4	-6.31	76800
Supreme Petro	887.45	11.65	535402	LT Foods	405.6	-6.3	4893846



Nifty Daily chart with RSI indicator



BankNifty Daily chart with RSI indicator



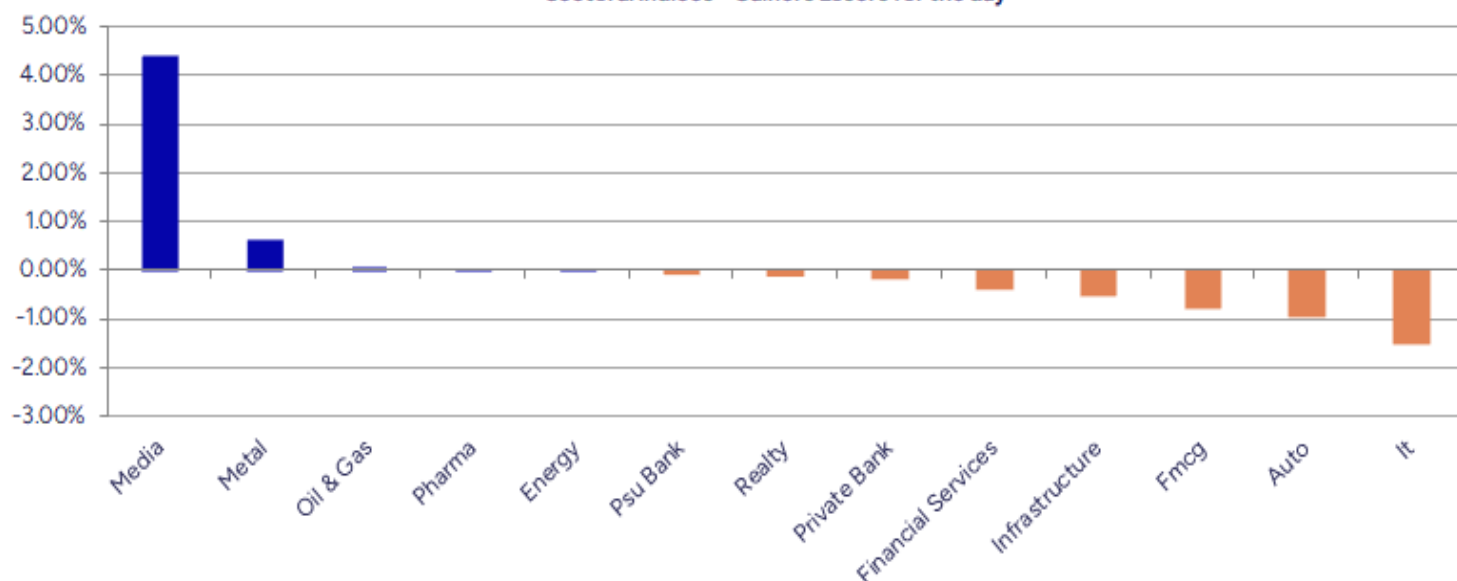
Breakouts - Cross above 200 DMA			
Company Name	LCP	Change %	200 DMA
Tamil Telecom	11.76	17.84	9.98
Chennai Petro	702.35	6.83	657.45
VIP Industries	429.65	4.31	411.88
Seya Industries	23.99	3.72	23.13
Kirloskar Bros	1922.6	3.56	1856.45
Aartech Solonic	69.59	3.51	67.23
Borosil Sci	163.68	3.12	158.73
Fine Organics	4718.2	2.82	4588.93
Global Health	1160.4	2.26	1134.81
Esprit Stones	112	2.00	109.8
Ameya Precision	110	1.98	107.86
NHPC	85.21	1.90	83.62
Steel City Secu	104.32	1.85	102.43
STL Global	16.15	1.83	15.86
Genus Power	363.45	1.82	356.97
Prime Sec	269.79	1.77	265.09
Fusion Finance	192.76	1.71	189.51
Skipper	492.2	1.57	484.59

* Stocks crossing above its Simple Moving Average (200DMA)

Breakdown - Cross below 200 DMA			
Company Name	LCP	Change %	200 DMA
Touchwood Enter	115.05	-4.48	120.45
Sahana Systems	1431.25	-3.53	1483.63
Madhya Pradesh	35.4	-3.07	36.52
HCL Tech	1703.2	-1.79	1734.2
Credo Brands Ma	160.46	-1.75	163.32
Archidply Ind	104.65	-1.74	106.5
Modison	155.9	-1.57	158.39
Aarti Drugs	432.9	-1.38	438.95
Akiko Global	78.25	-1.25	79.24
Gulf Oil Lubric	1174.4	-1.24	1189.17
Bosch	31575	-1.23	31966.62
Rattanindia Ent	57.32	-1.17	58
Sundaram-Clayto	10735	-1.05	10848.59
Indian Hume	401.15	-0.98	405.13
Tania Platforms	645.3	-0.86	650.91
Kapston Service	239.11	-0.83	241.11
Avanti Feeds	708.6	-0.73	713.81
S H Kelkar	236.14	-0.73	237.87

* Stocks crossing below its Simple Moving Average (200DMA)

Sectoral Indices - Gainers Losers for the day



Stocks witnessing a volume surge as compared to their 5 day average volume

Watch out for the stocks that have seen a huge spurt in its share price over the last three days

Volume Shockers - NSE					
Company name	LCP	% Chg	Volume	Avg Vol *	% Chg
Diamond Power	106.95	3.09	5951273	6800	87414
Krishival Foods	414.4	-0.1	110299	1200	9092
Madhya Bharat A	416.7	11.02	2533817	28386	8826
Tamil Telecom	11.76	20	472454	10569	4370
Sky Gold	309.95	-2.55	1107287	25989	4161
Gallantt Ispat	525.8	3.83	1309064	33914	3760
Aakash Explorat	13.32	9	7223645	223135	3137
Oneclick Logi.	194.6	-0.05	136800	4320	3067
Innovana	503.8	13.83	168805	5600	2914
Chennai Petro	702.35	10.96	17613040	588532	2893
Marathon Realty	631.2	6.88	1252325	50063	2401
Paras Defence	1734.5	4.85	1860769	74764	2389
V-Mart Retail	923.4	3.85	283372	11748	2312
Laxmi Goldorna	699.6	-1.1	24091	1094	2103
Deccan Cements	798.35	8.42	324570	15432	2003
SRM Contractors	480.25	8.16	715410	38037	1781
Premier Explo	614.3	3.63	1445882	77069	1776
Jai Balaji Ind	102.68	2.38	998183	54390	1735
UCO Bank	29.23	-2.4	56425909	3241793	1641
United Polyfab	18.71	1.91	249876	14703	1599

* the Average Volume of last 5 days

Price Shockers - NSE				
Company name	LCP	Prv Close	% Chg	Volume
Sumeet Ind	58.75	4.89	1101.43	0
Aakash Explorat	13.32	9.7	37.32	7223645
Tamil Telecom	11.76	9.71	21.11	472454
Ishan Dyes	53.63	45.19	18.68	492860
Softtech Engine	375.95	318.9	17.89	18163
Madhya Bharat A	416.7	353.55	17.86	2533817
Zee Media	15.81	13.49	17.2	51233040
Gallantt Ispat	525.8	451.15	16.55	1309064
Borosil Sci	163.68	140.73	16.31	1555686
Sri Adhikari	755.2	652.45	15.75	4291
Sri Adhikari	755.2	652.45	15.75	4291
Innovana	503.8	435.3	15.74	168805
Seya Industries	23.99	20.74	15.67	5832
Manav Infra Pro	19.8	17.15	15.45	12000
Onelife Capital	15.85	13.8	14.86	84661
SPML Infra	251.33	220.27	14.1	1278197
Megastar Foods	275.65	243.95	12.99	44920
AGI Infra	987.95	874.5	12.97	812598
Times Guaranty	184.45	164.44	12.17	40907
Zee Entertain	149.66	133.79	11.86	163843969

* the % price rise of the last 3 days

Symbol	LTP	Chng	% Chng	Volume (lacs)	Turnover (crs.)	52w High	Diff with 52w H	52w Low	Diff with 52w L	365 days % chng	30 days % chng
NIFTY 50	24971.90	-140.50	-0.56%	2485.06	20787.77	26277.35	4.97%	21743.65	14.85%	1.04%	6.86%
ADANIENT	2466.00	17.60	0.72%	7.91	195.08	3315.00	25.61%	2025.00	21.78%	-3.61%	-23.23%
ADANIPTS	1351.10	1.80	0.13%	39.21	530.28	1604.95	15.82%	995.65	35.70%	-3.30%	-9.17%
APOLLOHOSP	7003.00	-60.50	-0.86%	1.37	96.43	7545.35	7.19%	6001.00	16.70%	-0.01%	14.48%
ASIANPAINT	2264.00	-21.70	-0.95%	5.96	134.94	3394.90	33.31%	2124.75	6.55%	-1.29%	-20.93%
AXISBANK	1214.80	-5.90	-0.48%	23.12	280.67	1339.65	9.32%	933.50	30.13%	0.88%	-1.35%
BAJAJ-AUTO	8277.00	-94.00	-1.12%	2.72	225.21	12774.00	35.20%	7089.35	16.75%	-4.23%	-12.82%
BAJAJFINSV	1995.00	8.80	0.44%	11.26	222.52	2135.00	6.56%	1523.25	30.97%	-2.47%	25.80%
BAJFINANCE	913.00	8.00	0.88%	58.70	532.70	978.80	6.72%	642.50	42.10%	-90.21%	-87.31%
BEL	421.40	13.15	3.22%	430.17	1795.66	422.40	0.24%	240.25	75.40%	6.37%	33.87%
BHARTIARTL	1935.00	-1.70	-0.09%	29.46	571.01	1949.00	0.72%	1372.85	40.95%	5.73%	36.77%
CIPLA	1498.80	-0.90	-0.06%	6.57	98.37	1702.05	11.94%	1335.00	12.27%	1.04%	-2.71%
COALINDIA	392.20	3.15	0.81%	33.59	130.95	543.55	27.84%	349.25	12.30%	-3.10%	-18.98%
DRREDDY	1319.40	-5.90	-0.45%	8.44	111.03	1421.49	7.18%	1020.00	29.35%	7.74%	-77.95%
EICHERMOT	5548.50	23.50	0.43%	2.48	136.75	5906.50	6.06%	4508.75	23.06%	2.31%	14.02%
GRASIM	2723.90	11.30	0.42%	7.29	197.76	2877.75	5.35%	2276.95	19.63%	2.00%	9.99%
HCLTECH	1699.90	-40.00	-2.30%	22.21	379.83	2012.20	15.52%	1302.75	30.49%	5.56%	20.17%
HDFCBANK	1948.10	-16.60	-0.84%	58.70	1143.50	1996.30	2.41%	1588.05	22.67%	1.61%	17.95%
HDFCLIFE	773.65	-5.30	-0.68%	18.48	143.35	791.10	2.21%	575.65	34.40%	-0.19%	34.08%
HEROMOTOCO	4247.20	-91.30	-2.10%	5.81	247.87	6246.25	32.00%	3344.00	27.01%	0.69%	-20.42%
HINDALCO	662.00	12.85	1.98%	60.81	399.96	772.65	14.32%	546.45	21.15%	-0.15%	-5.16%
HINDUNILVR	2276.00	-6.20	-0.27%	8.43	191.48	3035.00	25.01%	2136.00	6.55%	-2.25%	-5.53%
ICICIBANK	1419.10	-8.00	-0.56%	55.14	781.92	1471.60	3.57%	1135.50	24.98%	-1.57%	23.17%
INDUSINDBK	838.90	-1.35	-0.16%	31.91	267.20	1540.75	45.55%	606.00	38.43%	5.90%	-44.98%
INFY	1584.70	-38.20	-2.35%	79.43	1259.62	2006.45	21.02%	1307.00	21.25%	3.71%	5.89%
ITC	413.40	-5.15	-1.23%	148.38	615.77	528.50	21.78%	390.15	5.96%	-4.07%	-0.25%
JIOFIN	293.20	-1.05	-0.36%	134.06	392.24	368.30	20.39%	198.65	47.60%	4.44%	-18.47%
JSWSTEEL	995.90	-9.65	-0.96%	11.33	112.75	1074.90	7.35%	854.15	16.60%	-0.29%	7.33%
KOTAKBANK	2177.80	8.00	0.37%	17.21	374.13	2301.90	5.39%	1679.05	29.70%	3.28%	22.20%
LT	3579.00	-83.00	-2.27%	18.68	672.19	3963.50	9.70%	2965.30	20.70%	1.73%	3.59%
M&M	3136.00	-48.40	-1.52%	17.31	544.00	3270.95	4.13%	2425.00	29.32%	5.70%	12.13%
MARUTI	12693.00	-98.00	-0.77%	1.92	244.04	13680.00	7.21%	10725.00	18.35%	2.71%	4.83%
NESTLEIND	2358.00	-2.40	-0.10%	6.49	153.81	2778.00	15.12%	2110.00	11.75%	-2.24%	-5.52%
NTPC	332.60	-2.60	-0.78%	82.77	275.72	448.45	25.83%	292.80	13.59%	-2.73%	-6.84%
ONGC	251.10	-0.79	-0.31%	167.76	422.73	345.00	27.22%	205.00	22.49%	3.13%	-6.59%
POWERGRID	289.95	-3.15	-1.07%	68.33	198.64	366.25	20.83%	247.30	17.25%	-1.68%	-10.08%
RELIANCE	1456.00	-10.20	-0.70%	59.89	870.47	1608.80	9.50%	1114.85	30.60%	2.76%	-49.59%
SBILIFE	1819.00	8.10	0.45%	6.27	114.04	1936.00	6.04%	1372.55	32.53%	0.68%	23.68%
SBIN	790.00	-6.15	-0.77%	55.49	439.05	899.00	12.12%	680.00	16.18%	0.71%	-4.80%
SHRIRAMFIN	663.30	-3.05	-0.46%	42.43	278.95	730.45	9.19%	493.35	34.45%	0.99%	-76.38%
SUNPHARMA	1663.00	-2.10	-0.13%	8.41	139.38	1960.35	15.17%	1460.90	13.83%	-1.10%	13.48%
TATACONSUM	1110.80	10.60	0.96%	7.59	83.68	1250.10	11.14%	882.90	25.81%	-3.56%	1.41%
TATAMOTORS	671.80	-4.40	-0.65%	102.64	688.91	1179.00	43.02%	535.75	25.39%	-5.85%	-29.69%
TATASTEEL	152.35	0.38	0.25%	170.96	259.61	182.95	16.73%	122.62	24.25%	-6.75%	-15.54%
TCS	3392.00	-43.70	-1.27%	31.23	1059.49	4592.25	26.14%	3056.05	10.99%	-2.24%	-9.84%
TECHM	1680.00	-16.10	-0.95%	7.32	123.29	1807.70	7.06%	1209.40	38.91%	7.33%	21.17%
TITAN	3502.90	-16.10	-0.46%	6.43	224.90	3867.00	9.42%	2925.00	19.76%	-1.70%	3.51%
TRENT	6108.00	210.50	3.57%	22.57	1368.09	8345.00	26.81%	4488.00	36.10%	8.50%	11.98%
ULTRACEMCO	11445.00	-13.00	-0.11%	3.05	347.77	12339.00	7.25%	10047.85	13.90%	-2.45%	7.46%
WIPRO	263.50	-3.04	-1.14%	62.13	163.60	324.60	18.82%	228.00	15.57%	7.75%	-45.67%
ETERNAL	254.50	1.17	0.46%	215.23	546.43	304.70	16.48%	191.95	32.59%	6.64%	#VALUE!

Disclaimer / Disclosures

ANALYST CERTIFICATION

I, Mrs. Vaishali Parekh B.com, Research Analyst, author and the name subscribed to this report, hereby certify that all of the views expressed in this research report accurately reflect our views about the subject issuer(s) or securities. We also certify that no part of our compensation was, is, or will be directly or indirectly related to the specific recommendation(s) or view(s) in this report.

Terms & conditions and other disclosures:

Prabhudas Lilladher Pvt. Ltd, Mumbai, India (hereinafter referred to as "PL") is engaged in the business of Stock Broking, Portfolio Manager, Depository Participant and distribution for third party financial products. PL is a subsidiary of Prabhudas Lilladher Advisory Services Pvt Ltd. which has its various subsidiaries engaged in business of commodity broking, investment banking, financial services (margin funding) and distribution of third party financial/other products, details in respect of which are available at www.plindia.com

This document has been prepared by the Research Division of PL and is meant for use by the recipient only as information and is not for circulation. This document is not to be reported or copied or made available to others without prior permission of PL. It should not be considered or taken as an offer to sell or a solicitation to buy or sell any security.

The information contained in this report has been obtained from sources that are considered to be reliable. However, PL has not independently verified the accuracy or completeness of the same. Neither PL nor any of its affiliates, its directors or its employees accepts any responsibility of whatsoever nature for the information, statements and opinion given, made available or expressed herein or for any omission therein.

Recipients of this report should be aware that past performance is not necessarily a guide to future performance and value of investments can go down as well. The suitability or otherwise of any investments will depend upon the recipient's particular circumstances and, in case of doubt, advice should be sought from an independent expert/advisor.

Either PL or its affiliates or its directors or its employees or its representatives or its clients or their relatives may have position(s), make market, act as principal or engage in transactions of securities of companies referred to in this report and they may have used the research material prior to publication.

PL may from time to time solicit or perform investment banking or other services for any company mentioned in this document.

PL is registered as Research Analyst under Securities and Exchange Board of India (Research Analysts) Regulations, 2014 PL submits that no material disciplinary action has been taken on us by any Regulatory Authority impacting Equity Research Analysis activities.

PL or its research analysts or its associates or his relatives do not have any financial interest in the subject company.

PL or its research analysts or its associates or his relatives do not have actual/beneficial ownership of one per cent or more securities of the subject company at the end of the month immediately preceding the date of publication of the research report.

PL or its research analysts or its associates or his relatives do not have any material conflict of interest at the time of publication of the research report.

PL or its associates might have received compensation from the subject company in the past twelve months.

PL or its associates might have managed or co-managed public offering of securities for the subject company in the past twelve months or mandated by the subject company for any other assignment in the past twelve months.

PL or its associates might have received any compensation for investment banking or merchant banking or brokerage services from the subject company in the past twelve months.

PL or its associates might have received any compensation for products or services other than investment banking or merchant banking or brokerage services from the subject company in the past twelve months PL or its associates might have received any compensation or other benefits from the subject company or third party in connection with the research report.

PL encourages independence in research report preparation and strives to minimize conflict in preparation of research report. PL or its analysts did not receive any compensation or other benefits from the subject Company or third party in connection with the preparation of the research report. PL or its Research Analysts do not have any material conflict of interest at the time of publication of this report.

It is confirmed that Mrs.Vaishali Parekh B.com, Research Analyst of this report has not received any compensation from the companies mentioned in the report in the preceding twelve months compensation of our Research Analysts is not based on any specific merchant banking, investment banking or brokerage service transactions.

The Research analysts for this report certifies that all of the views expressed in this report accurately reflect his or her personal views about the subject company or companies and its or their securities, and no part of his or her compensation was, is or will be, directly or indirectly related to specific recommendations or views expressed in this report.

The research analysts for this report has not served as an officer, director or employee of the subject company PL or its research analysts have not engaged in market making activity for the subject company

Our sales people, traders, and other professionals or affiliates may provide oral or written market commentary or trading strategies to our clients that reflect opinions that are contrary to the opinions expressed herein, and our proprietary trading and investing businesses may make investment decisions that are inconsistent with the recommendations expressed herein. In reviewing these materials, you should be aware that any or all of the foregoing, among other things, may give rise to real or potential conflicts of interest.

PL and its associates, their directors and employees may (a) from time to time, have a long or short position in, and buy or sell the securities of the subject company or (b) be engaged in any other transaction involving such securities and earn brokerage or other compensation or act as a market maker in the financial instruments of the subject company or act as an advisor or lender/borrower to the subject company or may have any other potential conflict of interests with respect to any recommendation and other related information and opinions.