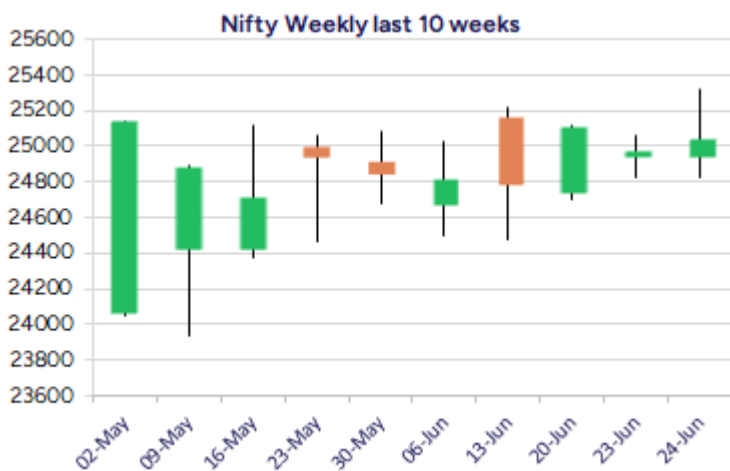
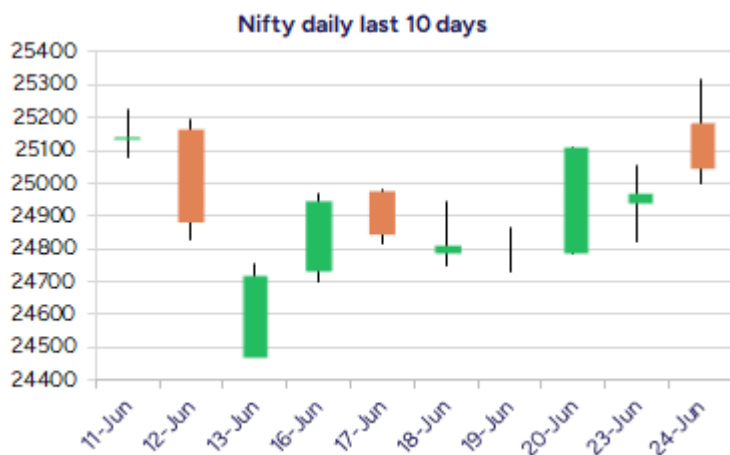


Date: 25<sup>th</sup> June 2025

\* Sensex 82055.11 + 158.32

\* Nifty 25044.35 + 72.45

\* Bank Nifty 56461.90 + 402.55



\*Blue candle → Close rate > Open rate \* Red candle → Close rate < Open rate

## Market Preview

### Nifty resists near 25300 zone

Nifty witnessed a gap up opening to scale 25300 level during the intraday session but with profit booking in the later half dragged the index to close near the 25050 level. BankNifty need to sustain above the 56000 zone to anticipate for further upward movement with bias remaining positive as of now. The market breadth was strong with the advance decline indicating a ratio of almost 3:1 at close.

## Market Forecast

### Nifty daily range 24800-25250

Nifty, indicated a strong opening session and touched the 25300 zone but fizzled out in the second half with the bias and sentiment still precariously placed amid the geo-political tensions looming around. The index would need a clarity and conviction for further upward move and a decisive breach above the 25250 zone is much needed to trigger for further fresh upward move in the coming days. On the downside, the 50EMA level at 24500 zone would be the important and crucial support as mentioned earlier.

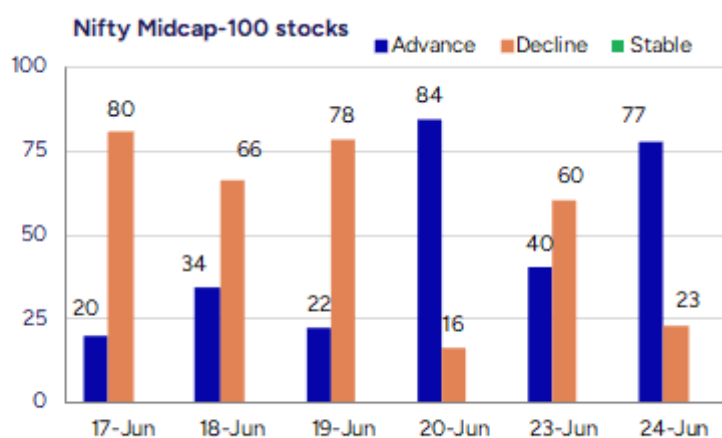
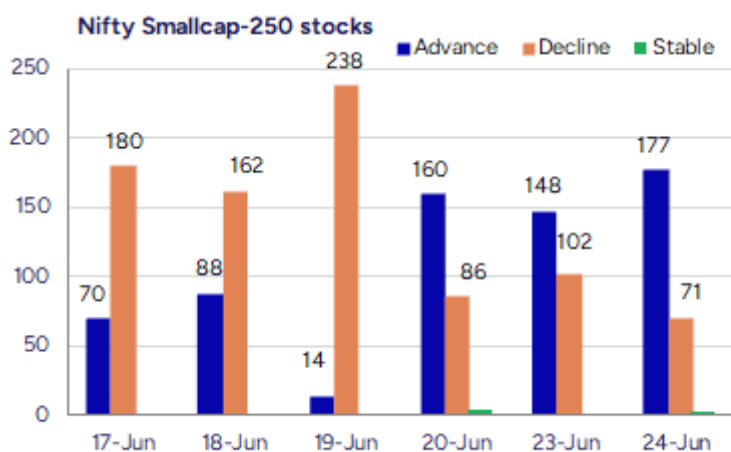
BankNifty, once again moved past the 56200 zone to hit the high level at 56860 zone but could not sustain for long with profit booking seen and ended near the 56500 level with more conviction and stability awaited. The index needs to sustain above the near-term support of 55400 level to maintain the bias intact and on the upside a decisive breach above the 57000 zone shall trigger for fresh upward move in the coming days.

The support for the day is seen at 24800 levels while the resistance is seen at 25250 levels. BankNifty would have the daily range of 56000-57000 levels.

Indices	Period	Closing	% Chng	Trend	Reversal	2 Sup	1 Sup	Pivot	1 Res	2 Res
Nifty	Daily	25044.35	0.29%	3	24978.65	24803	24923	25121	25241	25439
	Weekly	25112.40	1.59%	1	24980.40	24557	24835	24984	25262	25412
	Monthly	24750.70	1.71%	1	24390.40	23422	24086	24600	25265	25779
Bank Nifty	Daily	56461.90	0.72%	3	56125.90	55948	56205	56533	56791	57119
	Weekly	56252.85	1.31%	-2	56195.25	55045	55649	55986	56590	56927
	Monthly	55749.70	1.20%	2	53879.10	52648	54199	55036	56587	57424
Sensex	Daily	82055.11	0.19%	3	81897.60	81206	81631	82324	82749	83443
	Weekly	82408.17	1.59%	1	82113.60	80504	81456	81974	82926	83445
	Monthly	81451.01	1.51%	1	80320.40	77296	79374	81046	83123	84796

**Gainers - Losers ( Nifty 500 Stocks )**

Gainers				Losers			
Company Name	Last Price	% Gain	Volume	Company Name	Last Price	% Loss	Volume
Mukand	137.4	20	4077066	Sunrest	54	-10.74	35200
Bajaj Consumer	202.63	19.84	20965390	Osia Hyper Reta	16.2	-10	5312514
Indifra	18.95	17.7	16000	Garden Reach Sh	3182.8	-8.87	5119444
The Western Ind	169.52	17.13	139401	BEML	4443.1	-7.22	2105509
Enviro Infra	236.3	11.76	45739593	Apex Ecotech	118	-6.98	8000
Kundan Edifice	125	11.31	3600	Marvel Decor Lt	97.05	-6.68	4000
Foods and Inns	114.18	10.78	5021028	Fiberweb India	50.52	-6.34	437028



## Nifty Daily chart with RSI indicator



## BankNifty Daily chart with RSI indicator



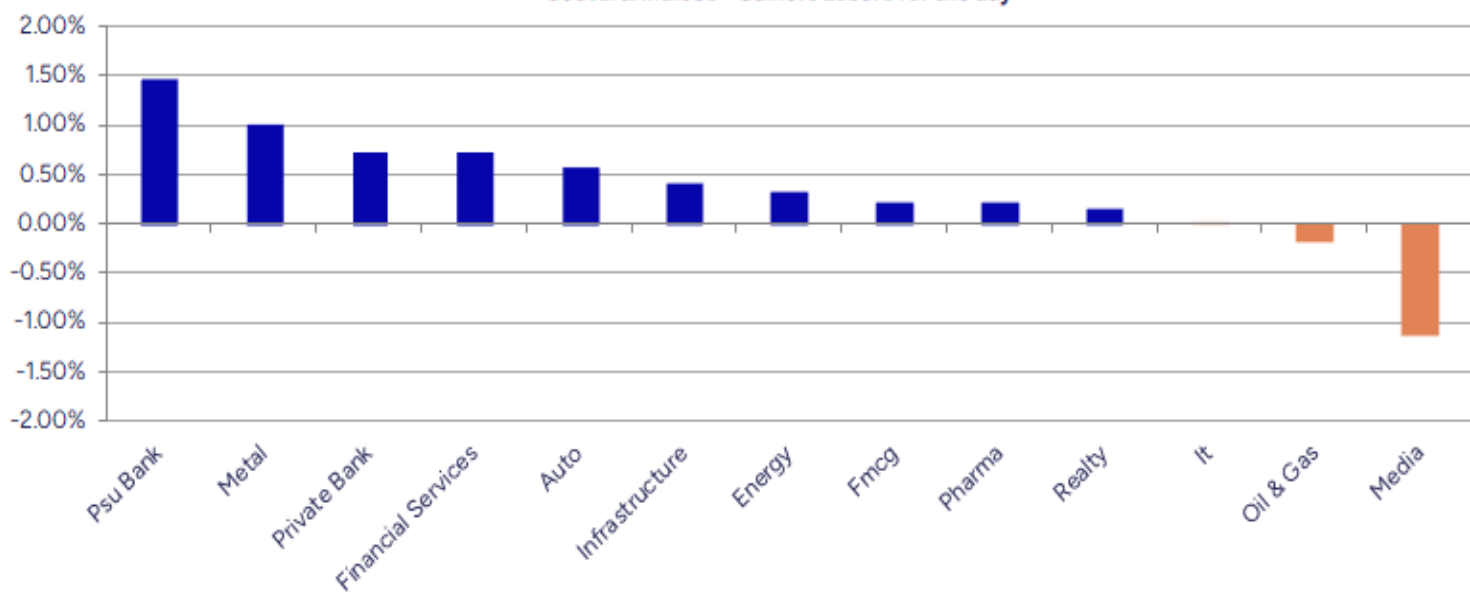
Breakouts - Cross above 200 DMA			
Company Name	LCP	Change %	200 DMA
Mukand	137.4	10.85	123.95
Aspinwall	299.75	6.06	282.61
Vardhman Poly	12.28	5.68	11.62
Filatex India	55.94	5.15	53.2
Foods and Inns	114.18	5.07	108.67
Bajaj Consumer	202.63	3.35	196.06
Repco Home	439.2	3.35	424.95
Brooks Labs	145.02	3.28	140.42
Kronox Lab Scie	173.32	2.54	169.02
Ramco System	400.95	2.36	391.69
Suzlon Energy	64.39	2.27	62.96
Linc	144.67	2.27	141.46
Bayer CropScien	5654.5	2.09	5538.66
Banaras Beads	127.26	2.09	124.65
IEX	187.77	2.08	183.95
S H Kelkar	242.73	2.06	237.82
Bodal Chemicals	71.79	2.05	70.35
Exxaro	8.54	2.03	8.37

\* Stocks crossing above its Simple Moving Average (200DMA)

Breakdown - Cross below 200 DMA			
Company Name	LCP	Change %	200 DMA
Shyam Telecom	16.28	-4.40	17.03
Williamson Mago	32.61	-4.31	34.08
Linde India	6562.5	-3.89	6828.36
Jupiter Life	1426.7	-3.61	1480.07
Oil India	445.85	-2.64	457.95
Embassy Develop	118.48	-2.21	121.16
MRPL	141.74	-2.19	144.92
Crop Life Sci.	49.4	-1.75	50.28
Mohini Health &	58.4	-0.93	58.95
Kriti Ind	152.42	-0.91	153.82
Vardhman Steels	243.9	-0.84	245.96
Vedanta	445.8	-0.83	449.54
Asahi India	691.6	-0.67	696.26
Global Health	1128.6	-0.56	1134.96
STL Global	15.75	-0.51	15.83
Reliable Data S	75.94	-0.42	76.26
Archidply Decor	92.16	-0.38	92.51
Kirloskar Bros	1857.4	-0.01	1857.5

\* Stocks crossing below its Simple Moving Average (200DMA)

Sectoral Indices - Gainers Losers for the day



Stocks witnessing a volume surge as compared to their 5 day average volume

Watch out for the stocks that have seen a huge spurt in its share price over the last three days

Volume Shockers - NSE					
Company name	LCP	% Chg	Volume	Avg Vol *	% Chg
Diamond Power	109.9	2.76	5788976	6800	85027
Tamil Telecom	11.57	-1.62	1319106	10569	12381
Bajaj Consumer	202.63	19.84	20965390	256741	8066
Remsons Ind	140.04	5.63	794405	21094	3666
Astec Life	824.35	7.82	661642	17955	3585
Garware Technic	906	5.23	520072	14113	3585
Tainwala Chem	227.94	4.66	56688	1585	3477
Foods and Inns	114.18	10.78	5021028	146288	3332
Sky Gold	314.75	1.55	846389	25989	3157
The Western Ind	169.52	17.13	139401	4459	3026
Marathon Realty	641.1	1.57	1521317	50063	2939
Touchwood Enter	114.96	-0.08	109676	3929	2691
Laxmi Goldorna	692.3	-1.04	30229	1094	2664
Indian Card	332.85	5.1	302241	11215	2595
Madhya Bharat A	427.1	2.5	759126	28386	2574
Gallantt Ispat	530.65	0.92	730875	33914	2055
Osia Hyper Reta	16.2	-10	5312514	263221	1918
Aakash Explorat	12.73	-4.43	4179721	223135	1773
Ideaforge Tech	633.5	0.39	5114719	273033	1773
Mukand	137.4	20	4077066	220014	1753

\* the Average Volume of last 5 days

Price Shockers - NSE				
Company name	LCP	Prv Close	% Chg	Volume
Bajaj Consumer	202.63	169.25	19.72	20965390
Mukand	137.4	114.93	19.55	4077066
Tamil Telecom	11.57	9.8	18.06	1319106
Borosil Sci	163.14	138.42	17.86	1635147
The Western Ind	169.52	143.96	17.75	139401
Innovana	515.75	442.6	16.53	66461
Ishan Dyes	52.13	44.76	16.47	344269
Foods and Inns	114.18	99.53	14.72	5021028
Madhya Bharat A	427.1	375.35	13.79	759126
ABM Inter	53.2	46.9	13.43	10456
Coffee Day	37.33	33.31	12.07	3223670
Oil Country	86.57	77.34	11.93	305803
63 Moons Tech	962.9	861.3	11.8	1286045
AGI Infra	993.75	893.8	11.18	486275
Deccan Cements	818.25	736.35	11.12	105646
Zee Media	14.85	13.37	11.07	19102136
Aditya Vision	392.8	355.6	10.46	388977
Sri Adhikari	792.95	719.25	10.25	1684
Keynote Finance	306.95	278.45	10.24	1018
Supreme Infra	107.06	97.12	10.23	3188

\* the % price rise of the last 3 days



Symbol	LTP	Chng	% Chng	Volume (lacs)	Turnover (crs.)	52w High	Diff with 52w H	52w Low	Diff with 52w L	365 days % chng	30 days % chng
NIFTY 50	25044.35	72.45	0.29%	4501.65	35507.41	26277.35	4.69%	21743.65	15.18%	0.48%	6.26%
ADANIENT	2505.00	33.00	1.33%	9.96	251.39	3258.00	23.11%	2025.00	23.70%	-2.68%	-22.49%
ADANIPTS	1394.00	39.20	2.89%	76.35	1071.01	1604.95	13.14%	995.65	40.01%	-2.91%	-8.80%
APOLLOHOSP	7000.00	-7.50	-0.11%	2.38	167.57	7545.35	7.23%	6001.00	16.65%	-0.81%	13.57%
ASIANPAINT	2277.00	12.90	0.57%	10.44	238.68	3394.90	32.93%	2124.75	7.17%	-2.22%	-21.68%
AXISBANK	1221.70	7.60	0.63%	67.46	825.88	1339.65	8.80%	933.50	30.87%	0.33%	-1.89%
BAJAJ-AUTO	8378.00	91.50	1.10%	2.14	179.54	12774.00	34.41%	7089.35	18.18%	-5.20%	-13.70%
BAJAJFINSV	2008.00	10.40	0.52%	17.18	345.88	2135.00	5.95%	1523.25	31.82%	-1.91%	26.52%
BAJFINANCE	919.00	3.50	0.38%	115.56	1068.25	978.80	6.11%	642.50	43.04%	-90.10%	-87.17%
BEL	419.00	-1.90	-0.45%	338.05	1415.38	426.50	1.76%	240.25	74.40%	9.67%	38.02%
BHARTIARTL	1942.00	5.70	0.29%	68.37	1327.29	1963.00	1.07%	1389.35	39.78%	5.71%	36.74%
CIPLA	1501.50	2.40	0.16%	13.52	203.76	1702.05	11.78%	1335.00	12.47%	1.00%	-2.75%
COALINDIA	392.80	0.30	0.08%	46.05	180.94	543.55	27.73%	349.25	12.47%	-2.24%	-18.26%
DRREDDY	1339.80	21.90	1.66%	10.11	135.34	1421.49	5.75%	1020.00	31.35%	7.14%	-78.08%
EICHERMOT	5630.00	77.50	1.40%	5.79	325.53	5906.50	4.68%	4508.75	24.87%	2.82%	14.59%
GRASIM	2779.70	56.00	2.06%	15.62	434.09	2877.75	3.41%	2276.95	22.08%	2.42%	10.44%
HCLTECH	1691.00	-12.20	-0.72%	36.01	613.74	2012.20	15.96%	1302.75	29.80%	3.34%	17.64%
HDFCBANK	1963.70	15.30	0.79%	113.13	2221.94	1996.30	1.63%	1588.05	23.65%	0.77%	16.97%
HDFCLIFE	779.00	4.85	0.63%	19.65	153.75	791.10	1.53%	575.65	35.33%	-0.80%	33.26%
HEROMOTOCO	4290.00	36.90	0.87%	4.69	201.70	6246.25	31.32%	3344.00	28.29%	-1.29%	-21.99%
HINDALCO	668.20	6.80	1.03%	55.10	369.17	772.65	13.52%	546.45	22.28%	1.74%	-3.37%
HINDUNILVR	2267.50	-7.60	-0.33%	24.41	555.25	3035.00	25.29%	2136.00	6.16%	-3.56%	-6.81%
ICICIBANK	1424.00	3.90	0.27%	111.88	1595.03	1471.60	3.23%	1152.65	23.54%	-2.05%	22.57%
INDUSINDBK	831.45	-8.45	-1.01%	54.82	457.61	1521.00	45.34%	606.00	37.20%	5.86%	-45.00%
INFY	1579.60	-4.40	-0.28%	80.83	1285.42	2006.45	21.27%	1307.00	20.86%	1.23%	3.35%
ITC	414.55	0.65	0.16%	166.90	694.94	528.50	21.56%	390.15	6.25%	-5.13%	-1.36%
JIOFIN	301.50	8.35	2.85%	240.72	726.07	363.00	16.94%	198.65	51.77%	4.05%	-18.77%
JSWSTEEL	1008.00	11.00	1.10%	14.34	145.23	1074.90	6.22%	854.15	18.01%	-1.14%	6.41%
KOTAKBANK	2219.80	35.70	1.63%	56.05	1243.17	2301.90	3.57%	1679.05	32.21%	3.97%	23.00%
LT	3612.00	28.30	0.79%	27.52	1000.54	3963.50	8.87%	2965.30	21.81%	-0.45%	1.38%
M&M	3156.20	21.20	0.68%	28.35	900.82	3270.95	3.51%	2425.00	30.15%	4.06%	10.39%
MARUTI	12620.00	-79.00	-0.62%	3.33	422.05	13680.00	7.75%	10725.00	17.67%	1.98%	4.08%
NESTLEIND	2374.30	15.20	0.64%	5.50	130.15	2778.00	14.53%	2110.00	12.53%	-2.29%	-5.58%
NTPC	331.50	-1.10	-0.33%	1008.15	3283.94	448.45	26.08%	292.80	13.22%	-3.48%	-7.56%
ONGC	244.09	-7.29	-2.90%	222.14	544.35	345.00	29.25%	205.00	19.07%	2.92%	-6.78%
POWERGRID	286.10	-4.15	-1.43%	150.04	431.59	366.25	21.88%	247.30	15.69%	-2.63%	-10.95%
RELIANCE	1456.80	-	#VALUE!	164.03	2389.31	1608.80	9.45%	1114.85	30.67%	2.10%	-49.91%
SBILIFE	1848.90	30.30	1.67%	8.76	161.44	1936.00	4.50%	1372.55	34.71%	1.11%	24.21%
SBIN	795.75	5.55	0.70%	114.01	911.59	899.00	11.48%	680.00	17.02%	-0.04%	-5.51%
SHRIRAMFIN	675.50	13.85	2.09%	48.24	326.83	730.45	7.52%	493.35	36.92%	0.27%	-76.55%
SUNPHARMA	1665.00	2.50	0.15%	20.66	345.04	1960.35	15.07%	1475.05	12.88%	-1.25%	13.31%
TATACONSUM	1110.50	1.10	0.10%	11.35	125.97	1250.10	11.17%	882.90	25.78%	-2.75%	2.26%
TATAMOTORS	674.30	3.05	0.45%	153.59	1043.16	1179.00	42.81%	535.75	25.86%	-6.54%	-30.21%
TATASTEEL	155.03	2.60	1.71%	254.03	394.48	179.00	13.39%	122.62	26.43%	-6.47%	-15.29%
TCS	3392.00	-1.60	-0.05%	34.03	1159.91	4592.25	26.14%	3056.05	10.99%	-3.44%	-10.95%
TECHM	1677.70	-4.10	-0.24%	19.24	324.51	1807.70	7.19%	1209.40	38.72%	6.42%	20.15%
TITAN	3539.00	33.30	0.95%	9.69	342.35	3867.00	8.48%	2925.00	20.99%	-2.07%	3.12%
TRENT	6071.00	-49.00	-0.80%	14.60	890.70	8345.00	27.25%	4488.00	35.27%	12.59%	16.21%
ULTRACEMCO	11601.00	152.00	1.33%	7.36	860.08	12339.00	5.98%	10047.85	15.46%	-2.53%	7.38%
WIPRO	264.89	1.65	0.63%	63.19	168.63	324.60	18.39%	228.00	16.18%	6.42%	-46.34%
ETERNAL	255.07	0.43	0.17%	356.34	916.45	304.70	16.29%	191.95	32.88%	7.19%	#VALUE!

## Disclaimer / Disclosures

### ANALYST CERTIFICATION

I, Mrs. Vaishali Parekh B.com, Research Analyst, author and the name subscribed to this report, hereby certify that all of the views expressed in this research report accurately reflect our views about the subject issuer(s) or securities. We also certify that no part of our compensation was, is, or will be directly or indirectly related to the specific recommendation(s) or view(s) in this report.

Terms & conditions and other disclosures:

Prabhudas Lilladher Pvt. Ltd, Mumbai, India (hereinafter referred to as "PL") is engaged in the business of Stock Broking, Portfolio Manager, Depository Participant and distribution for third party financial products. PL is a subsidiary of Prabhudas Lilladher Advisory Services Pvt Ltd. which has its various subsidiaries engaged in business of commodity broking, investment banking, financial services (margin funding) and distribution of third party financial/other products, details in respect of which are available at [www.plindia.com](http://www.plindia.com)

This document has been prepared by the Research Division of PL and is meant for use by the recipient only as information and is not for circulation. This document is not to be reported or copied or made available to others without prior permission of PL. It should not be considered or taken as an offer to sell or a solicitation to buy or sell any security.

The information contained in this report has been obtained from sources that are considered to be reliable. However, PL has not independently verified the accuracy or completeness of the same. Neither PL nor any of its affiliates, its directors or its employees accepts any responsibility of whatsoever nature for the information, statements and opinion given, made available or expressed herein or for any omission therein.

Recipients of this report should be aware that past performance is not necessarily a guide to future performance and value of investments can go down as well. The suitability or otherwise of any investments will depend upon the recipient's particular circumstances and, in case of doubt, advice should be sought from an independent expert/advisor.

Either PL or its affiliates or its directors or its employees or its representatives or its clients or their relatives may have position(s), make market, act as principal or engage in transactions of securities of companies referred to in this report and they may have used the research material prior to publication.

PL may from time to time solicit or perform investment banking or other services for any company mentioned in this document.

PL is registered as Research Analyst under Securities and Exchange Board of India (Research Analysts) Regulations, 2014 PL submits that no material disciplinary action has been taken on us by any Regulatory Authority impacting Equity Research Analysis activities.

PL or its research analysts or its associates or his relatives do not have any financial interest in the subject company.

PL or its research analysts or its associates or his relatives do not have actual/beneficial ownership of one per cent or more securities of the subject company at the end of the month immediately preceding the date of publication of the research report.

PL or its research analysts or its associates or his relatives do not have any material conflict of interest at the time of publication of the research report.

PL or its associates might have received compensation from the subject company in the past twelve months.

PL or its associates might have managed or co-managed public offering of securities for the subject company in the past twelve months or mandated by the subject company for any other assignment in the past twelve months.

PL or its associates might have received any compensation for investment banking or merchant banking or brokerage services from the subject company in the past twelve months.

PL or its associates might have received any compensation for products or services other than investment banking or merchant banking or brokerage services from the subject company in the past twelve months PL or its associates might have received any compensation or other benefits from the subject company or third party in connection with the research report.

PL encourages independence in research report preparation and strives to minimize conflict in preparation of research report. PL or its analysts did not receive any compensation or other benefits from the subject Company or third party in connection with the preparation of the research report. PL or its Research Analysts do not have any material conflict of interest at the time of publication of this report.

It is confirmed that Mrs.Vaishali Parekh B.com, Research Analyst of this report has not received any compensation from the companies mentioned in the report in the preceding twelve months compensation of our Research Analysts is not based on any specific merchant banking, investment banking or brokerage service transactions.

The Research analysts for this report certifies that all of the views expressed in this report accurately reflect his or her personal views about the subject company or companies and its or their securities, and no part of his or her compensation was, is or will be, directly or indirectly related to specific recommendations or views expressed in this report.

The research analysts for this report has not served as an officer, director or employee of the subject company PL or its research analysts have not engaged in market making activity for the subject company

Our sales people, traders, and other professionals or affiliates may provide oral or written market commentary or trading strategies to our clients that reflect opinions that are contrary to the opinions expressed herein, and our proprietary trading and investing businesses may make investment decisions that are inconsistent with the recommendations expressed herein. In reviewing these materials, you should be aware that any or all of the foregoing, among other things, may give rise to real or potential conflicts of interest.

PL and its associates, their directors and employees may (a) from time to time, have a long or short position in, and buy or sell the securities of the subject company or (b) be engaged in any other transaction involving such securities and earn brokerage or other compensation or act as a market maker in the financial instruments of the subject company or act as an advisor or lender/borrower to the subject company or may have any other potential conflict of interests with respect to any recommendation and other related information and opinions.