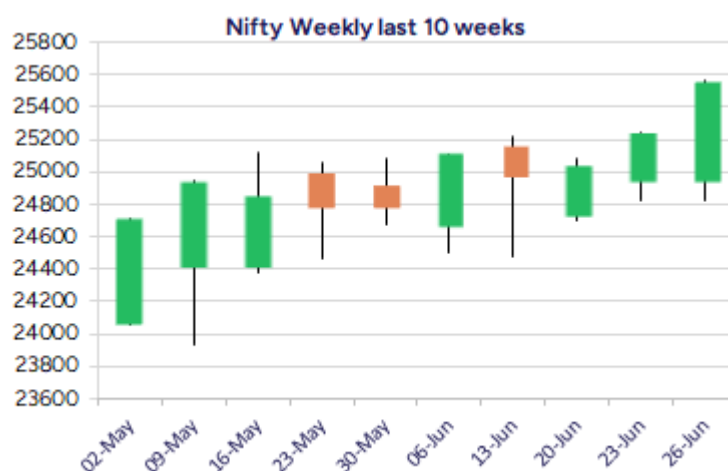
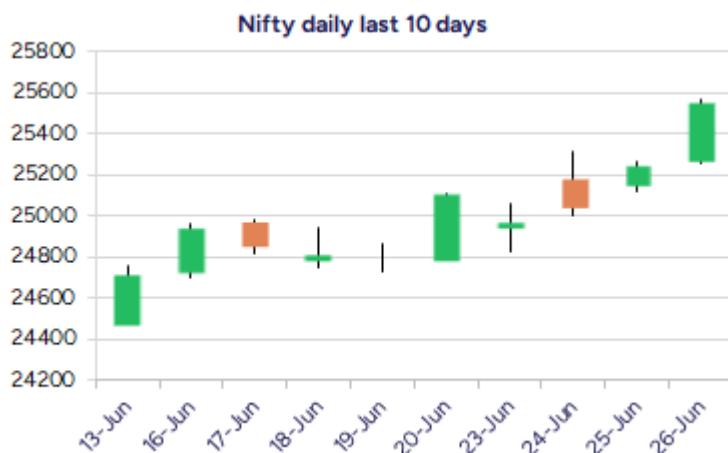


Date: 27th June 2025

* Sensex 83755.87 + 1000.36

* Nifty 25549.00 + 304.25

* Bank Nifty 57206.70 + 585.55



*Blue candle → Close rate > Open rate * Red candle → Close rate < Open rate

Market Preview

Nifty ends on a strong note above 25500 zone

Nifty after a long wait has decisively breached above the tough resistance zone of 25300 level, with the sentiment and bias getting strong further rise is expected. BankNifty with a strong bullish candle formation hit an all time high breaching above the previous peak zone at 57050 level with overall trend maintained strong. The market breadth was strong with the advance decline indicating a ratio of 4:3 at close.

Market Forecast

Nifty daily range 25400-25700

Nifty, after a period of one and a half month gripped between a tight range, has indicated a clear breakout with a bullish candle formation above the tough resistance hurdle of 25300 zone strengthening the trend and further rise is expected in the coming days. The index would have the near-term support elevated now to 25250-25300 zone and on the upside with bias and sentiment improving, can expect for targets of 25700 and 26200 levels, as mentioned earlier, in the coming days.

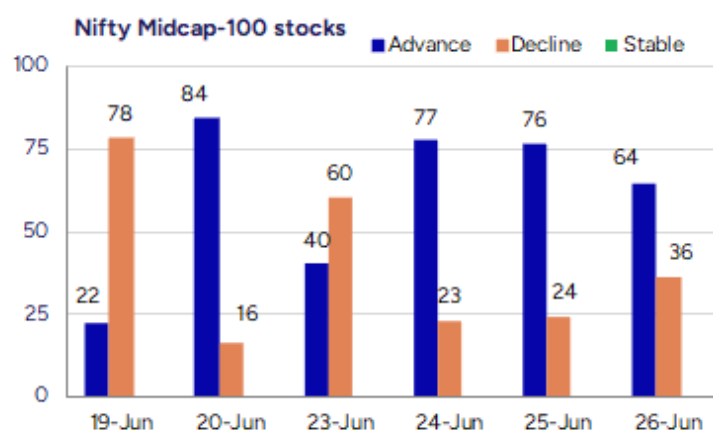
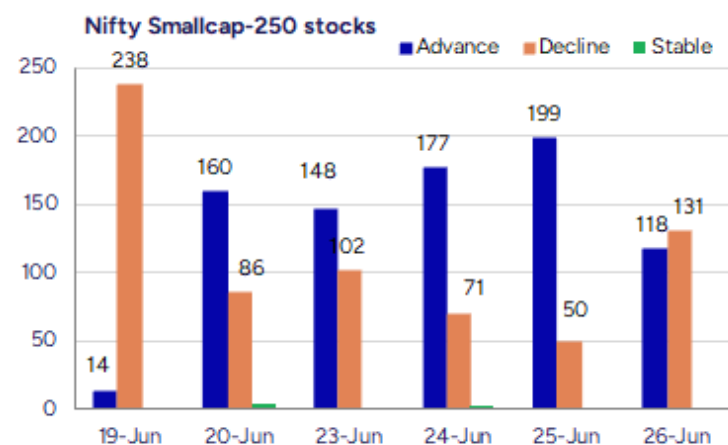
BankNifty, has indicated a strong closing with a bullish candle pattern to breach above the previous peak zone at 57050 level and has entered a new territory with bias improved significantly expecting for further upward move in the coming days. The index would have the important support near 56000 zone which needs to be sustained and, on the upside, can expect for fresh higher targets of 58500 and 60000 levels in the coming days.

The support for the day is seen at 25400 levels while the resistance is seen at 25700 levels. BankNifty would have the daily range of 56700-57800 levels.

Indices	Period	Closing	% Chng	Trend	Reversal	2 Sup	1 Sup	Pivot	1 Res	2 Res
Nifty	Daily	25549.00	1.21%	5	25229.45	25153	25351	25458	25656	25763
	Weekly	25112.40	1.59%	1	24980.40	24557	24835	24984	25262	25412
	Monthly	24750.70	1.71%	1	24390.40	23422	24086	24600	25265	25779
Bank Nifty	Daily	57206.70	1.03%	5	56595.60	56304	56756	57010	57461	57715
	Weekly	56252.85	1.31%	-2	56195.25	55045	55649	55986	56590	56927
	Monthly	55749.70	1.20%	2	53879.10	52648	54199	55036	56587	57424
Sensex	Daily	83755.87	1.21%	5	82677.10	82466	83111	83461	84107	84457
	Weekly	82408.17	1.59%	1	82113.60	80504	81456	81974	82926	83445
	Monthly	81451.01	1.51%	1	80320.40	77296	79374	81046	83123	84796

Gainers - Losers (Nifty 500 Stocks)

Gainers				Losers			
Company Name	Last Price	% Gain	Volume	Company Name	Last Price	% Loss	Volume
Orbit Exports	214.36	20	85345	Infibeam Avenue	17.49	-17.5	80155778
Hb Stockhol	109.76	20	712385	Fert and Chem	965.85	-6.95	1460543
Brainbees Solu	396.8	17	56327610	Sukhjit Starch	182.4	-6.35	149972
PAKKA	214.69	14.76	4119960	Sukhjit Starch	182.4	-6.35	149972
Onward Tech	370.8	12.31	2419033	Manoj Vaibhav G	241.14	-6.34	740704
Ind-Swift	18.61	12.18	3118246	S H Kelkar	235.5	-6.02	717853
Jai Balaji Ind	131.37	12.12	29226223	Umang Dairies	85.73	-5.43	58685



Nifty Daily chart with RSI indicator



BankNifty Daily chart with RSI indicator



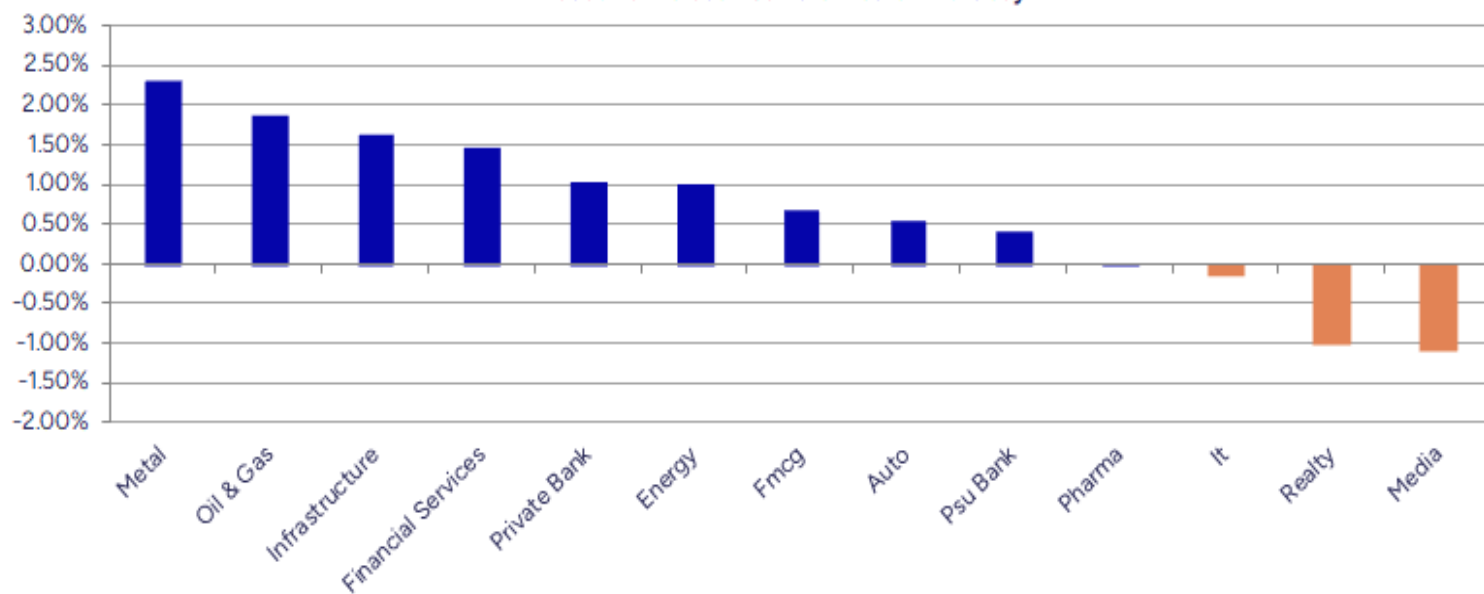
Breakouts - Cross above 200 DMA			
Company Name	LCP	Change %	200 DMA
Orbit Exports	214.36	16.73	183.64
ABM Inter	64.37	8.77	59.18
Rajdarshan Ind	51.33	6.52	48.19
Apar Ind	8672	5.71	8203.83
Hb Stockhol	109.76	5.12	104.41
Astec Life	971.8	4.95	925.93
Crop Life Sci.	52.75	4.87	50.3
Diamond Power	128.28	4.03	123.31
Sree Rayalaseem	659.2	2.83	641.08
Anjani Portland	152.55	2.79	148.41
Welspun Enter	542.05	2.70	527.8
Sotac Pharma	131.65	2.53	128.4
Nitin Spinners	398	2.43	388.57
Pyramid Techno	184.09	2.32	179.91
Landmark Cars	548.55	2.27	536.38
Adani Enterpris	2586.2	1.86	2539.03
Dynamatic Tech	7299	1.86	7165.42
Kamat Hotels	241.93	1.86	237.51

* Stocks crossing above its Simple Moving Average (200DMA)

Breakdown - Cross below 200 DMA			
Company Name	LCP	Change %	200 DMA
Umang Dairies	85.73	-3.77	89.09
Veekayem Fashio	241.15	-2.19	246.56
Oriental Carbon	215.7	-2.09	220.3
Thirumalai Chem	284.28	-1.74	289.31
Brigade Ent	1128	-1.64	1146.79
AFL	484.55	-1.53	492.08
DB Corp	272.9	-1.51	277.08
GE Power India	315.6	-1.42	320.14
Uniparts India	380.05	-1.39	385.42
Naga Dhunseri	4242	-1.27	4296.54
BLACK BOX	496.85	-1.24	503.08
Banaras Beads	123.5	-1.15	124.94
Incredible Ind	41.28	-1.03	41.71
Silver Touch Te	701.85	-1.01	708.99
S H Kelkar	235.5	-0.97	237.81
JISL	32.51	-0.97	32.83
Suryoday Small	137.29	-0.80	138.4
Signet Ind	62.06	-0.77	62.54

* Stocks crossing below its Simple Moving Average (200DMA)

Sectoral Indices - Gainers Losers for the day



Stocks witnessing a volume surge as compared to their 5 day average volume

Watch out for the stocks that have seen a huge spurt in its share price over the last three days

Volume Shockers - NSE					
Company name	LCP	% Chg	Volume	Avg Vol *	% Chg
Diamond Power	128.28	10	16896695	6800	248366
Jai Balaji Ind	131.37	12.12	29226223	54390	53635
Global Vectra	261.09	1.17	552892	7319	7454
KCK Industries	44.35	1.14	1007500	13600	7308
Thomas Scott	366.65	9.99	267823	4062	6493
Hb Stockhol	109.76	20	712385	10914	6427
Sky Gold	327.3	0.61	1564976	25989	5922
Brainbees Solu	396.8	17	56327610	1056728	5230
Kaya	422.65	4.99	293526	6240	4604
Astec Life	971.8	9.41	664491	17955	3601
KNR Construct	226.35	-1.88	23028757	692309	3226
Ind-Swift	18.61	12.18	3118246	96910	3118
Newgen Software	1179	2.38	3642262	114472	3082
Laxmi Goldorna	687.3	0.24	30199	1094	2661
OM Infra	134.16	3.19	2912669	118030	2368
B&B Triplewall	154.98	-3.07	159430	6682	2286
Jash Engineerin	576.1	4.41	516468	26774	1829
Shriram Finance	703.2	4.16	19066940	1003099	1801
Remsons Ind	144.07	1.73	388412	21094	1741
Krishna Institu	676.75	3.76	1012028	59456	1602

* the Average Volume of last 5 days

Price Shockers - NSE				
Company name	LCP	Prv Close	% Chg	Volume
Indifra	23.1	16.1	43.48	16000
ABM Inter	64.37	48.37	33.08	14393
Jai Balaji Ind	131.37	102.68	27.94	29226223
Astec Life	971.8	764.55	27.11	664491
Thomas Scott	366.65	294.3	24.58	267823
Orbit Exports	214.36	172.56	24.22	85345
Bajaj Consumer	207.61	169.09	22.78	1910638
Mukand	139.47	114.5	21.81	467288
Hb Stockhol	109.76	90.33	21.51	712385
Balaji Amines	1740.3	1438.3	21	643882
Global Vectra	261.09	216.07	20.84	552892
Diamond Power	128.28	106.95	19.94	16896695
Onward Tech	370.8	309.6	19.77	2419033
Oil Country	97.67	81.98	19.14	250663
Foods and Inns	122.29	103.07	18.65	1466772
Ind-Swift	18.61	15.74	18.23	3118246
PAKKA	214.69	183.34	17.1	4119960
Sammaan Capital	143.37	123.41	16.17	14490257
Sri Adhikari	874.15	755.2	15.75	1872
Supreme Infra	118.03	101.97	15.75	49268

* the % price rise of the last 3 days

Symbol	LTP	Chng	% Chng	Volume (lacs)	Turnover (crs.)	52w High	Diff with 52w H	52w Low	Diff with 52w L	365 days % chng	30 days % chng
NIFTY 50	25549.00	304.25	1.21%	4288.21	38683.34	26277.35	2.77%	21743.65	17.50%	0.97%	6.42%
ADANIENT	2580.00	52.80	2.09%	13.40	342.92	3258.00	20.81%	2025.00	27.41%	-0.80%	-20.31%
ADANIPTS	1425.50	32.40	2.33%	28.78	408.92	1604.95	11.18%	995.65	43.17%	-0.51%	-4.33%
APOLLOHOSP	7104.00	62.00	0.88%	4.26	301.52	7545.35	5.85%	6001.00	18.38%	-0.77%	11.86%
ASIANPAINT	2285.60	5.70	0.25%	9.22	210.82	3394.90	32.68%	2124.75	7.57%	-2.03%	-20.24%
AXISBANK	1231.50	18.20	1.50%	86.78	1067.28	1339.65	8.07%	933.50	31.92%	-0.16%	-4.57%
BAJAJ-AUTO	8426.00	36.50	0.44%	3.72	312.62	12774.00	34.04%	7089.35	18.85%	-6.35%	-13.15%
BAJAJFINSV	2050.00	38.20	1.90%	18.28	372.55	2135.00	3.98%	1523.25	34.58%	-1.99%	25.47%
BAJFINANCE	950.00	22.00	2.37%	116.69	1105.33	978.80	2.94%	642.50	47.86%	-89.99%	-86.88%
BEL	409.50	3.45	0.85%	257.27	1054.61	426.50	3.99%	240.25	70.45%	5.59%	31.11%
BHARTIARTL	2015.60	50.00	2.54%	94.13	1882.74	2018.40	0.14%	1408.45	43.11%	6.40%	38.92%
CIPLA	1513.00	3.00	0.20%	14.40	217.78	1702.05	11.11%	1335.00	13.33%	1.74%	0.69%
COALINDIA	394.10	2.35	0.60%	55.62	218.39	543.55	27.50%	349.25	12.84%	-2.72%	-16.52%
DRREDDY	1324.00	-17.60	-1.31%	23.73	313.49	1421.49	6.86%	1020.00	29.80%	8.12%	-77.93%
EICHERMOT	5598.50	22.50	0.40%	7.88	438.81	5906.50	5.21%	4508.75	24.17%	2.74%	16.77%
GRASIM	2880.00	48.20	1.70%	13.93	399.71	2894.90	0.51%	2276.95	26.48%	6.60%	12.51%
HCLTECH	1722.00	4.90	0.29%	29.71	510.74	2012.20	14.42%	1302.75	32.18%	2.60%	18.59%
HDFCBANK	2017.70	37.50	1.89%	250.42	5036.39	2027.10	0.46%	1588.05	27.06%	2.06%	15.71%
HDFCLIFE	800.10	15.00	1.91%	42.89	341.35	802.15	0.26%	576.95	38.68%	0.65%	32.85%
HEROMOTOCO	4281.50	-19.30	-0.45%	7.96	339.93	6246.25	31.45%	3344.00	28.04%	-1.34%	-21.95%
HINDALCO	689.30	16.65	2.48%	81.96	560.91	772.65	10.79%	546.45	26.14%	1.69%	-1.87%
HINDUNILVR	2280.90	2.20	0.10%	18.74	427.45	3035.00	24.85%	2136.00	6.78%	-4.82%	-6.31%
ICICIBANK	1440.00	14.20	1.00%	136.02	1954.43	1471.60	2.15%	1153.00	24.89%	-2.38%	19.02%
INDUSINDBK	834.70	4.90	0.59%	44.52	370.85	1521.00	45.12%	606.00	37.74%	3.71%	-44.52%
INFY	1614.20	-0.70	-0.04%	65.19	1052.86	2006.45	19.55%	1307.00	23.50%	2.18%	4.73%
ITC	420.00	3.65	0.88%	136.94	573.02	528.50	20.53%	390.15	7.65%	-5.99%	-1.64%
JIOFIN	312.55	9.25	3.05%	371.49	1153.52	363.00	13.90%	198.65	57.34%	7.65%	-15.53%
JSWSTEEL	1031.25	6.80	0.66%	38.92	400.42	1074.90	4.06%	854.15	20.73%	-0.76%	10.17%
KOTAKBANK	2202.00	3.70	0.17%	56.70	1245.24	2301.90	4.34%	1679.05	31.15%	5.22%	23.37%
LT	3660.30	40.50	1.12%	25.79	940.63	3963.50	7.65%	2965.30	23.44%	-0.79%	0.89%
M&M	3203.20	-12.30	-0.38%	29.07	932.68	3270.95	2.07%	2425.00	32.09%	4.39%	10.52%
MARUTI	12734.00	-33.00	-0.26%	3.55	451.95	13680.00	6.92%	10725.00	18.73%	2.79%	5.37%
NESTLEIND	2432.00	27.60	1.15%	15.57	377.59	2778.00	12.46%	2110.00	15.26%	-2.02%	-4.41%
NTPC	337.10	6.25	1.89%	137.54	461.12	448.45	24.83%	292.80	15.13%	-3.68%	-8.31%
ONGC	245.01	3.10	1.28%	157.67	383.43	345.00	28.98%	205.00	19.52%	-1.64%	-9.40%
POWERGRID	293.00	2.55	0.88%	102.32	298.55	366.25	20.00%	247.30	18.48%	-2.11%	-11.29%
RELIANCE	1495.30	28.00	1.91%	146.57	2181.16	1608.80	7.05%	1114.85	34.13%	2.27%	-49.55%
SBILIFE	1856.00	13.30	0.72%	11.48	213.44	1936.00	4.13%	1372.55	35.22%	2.28%	26.04%
SBIN	796.05	-4.00	-0.50%	247.04	1964.12	899.00	11.45%	680.00	17.07%	0.71%	-5.01%
SHRIRAMFIN	700.00	24.90	3.69%	190.68	1322.56	730.45	4.17%	493.35	41.89%	1.60%	-77.42%
SUNPHARMA	1666.10	-3.50	-0.21%	21.03	349.91	1960.35	15.01%	1492.30	11.65%	-0.39%	10.92%
TATACONSUM	1148.70	22.20	1.97%	22.37	254.07	1250.10	8.11%	882.90	30.11%	-1.73%	2.91%
TATAMOTORS	682.70	8.20	1.22%	101.04	686.72	1179.00	42.09%	535.75	27.43%	-7.48%	-29.37%
TATASTEEL	160.40	4.01	2.56%	406.49	645.88	179.00	10.39%	122.62	30.81%	-3.77%	-10.98%
TCS	3443.00	-1.80	-0.05%	28.78	989.50	4592.25	25.03%	3056.05	12.66%	-2.61%	-10.26%
TECHM	1688.00	-17.00	-1.00%	25.28	426.76	1807.70	6.62%	1209.40	39.57%	6.47%	19.42%
TITAN	3694.60	42.40	1.16%	16.20	596.32	3867.00	4.46%	2925.00	26.31%	1.16%	7.34%
TRENT	6106.00	-18.50	-0.30%	8.51	518.58	8345.00	26.83%	4488.00	36.05%	10.83%	14.72%
ULTRACEMCO	11942.00	209.00	1.78%	5.07	602.69	12339.00	3.22%	10047.85	18.85%	0.38%	8.18%
WIPRO	268.00	-1.41	-0.52%	85.63	230.56	324.60	17.44%	228.00	17.54%	7.66%	-45.78%
ETERNAL	265.20	6.34	2.45%	470.99	1240.48	304.70	12.96%	194.56	36.31%	14.14%	#VALUE!

Disclaimer / Disclosures

ANALYST CERTIFICATION

I, Mrs. Vaishali Parekh B.com, Research Analyst, author and the name subscribed to this report, hereby certify that all of the views expressed in this research report accurately reflect our views about the subject issuer(s) or securities. We also certify that no part of our compensation was, is, or will be directly or indirectly related to the specific recommendation(s) or view(s) in this report.

Terms & conditions and other disclosures:

Prabhudas Lilladher Pvt. Ltd, Mumbai, India (hereinafter referred to as "PL") is engaged in the business of Stock Broking, Portfolio Manager, Depository Participant and distribution for third party financial products. PL is a subsidiary of Prabhudas Lilladher Advisory Services Pvt Ltd. which has its various subsidiaries engaged in business of commodity broking, investment banking, financial services (margin funding) and distribution of third party financial/other products, details in respect of which are available at www.plindia.com

This document has been prepared by the Research Division of PL and is meant for use by the recipient only as information and is not for circulation. This document is not to be reported or copied or made available to others without prior permission of PL. It should not be considered or taken as an offer to sell or a solicitation to buy or sell any security.

The information contained in this report has been obtained from sources that are considered to be reliable. However, PL has not independently verified the accuracy or completeness of the same. Neither PL nor any of its affiliates, its directors or its employees accepts any responsibility of whatsoever nature for the information, statements and opinion given, made available or expressed herein or for any omission therein.

Recipients of this report should be aware that past performance is not necessarily a guide to future performance and value of investments can go down as well. The suitability or otherwise of any investments will depend upon the recipient's particular circumstances and, in case of doubt, advice should be sought from an independent expert/advisor.

Either PL or its affiliates or its directors or its employees or its representatives or its clients or their relatives may have position(s), make market, act as principal or engage in transactions of securities of companies referred to in this report and they may have used the research material prior to publication.

PL may from time to time solicit or perform investment banking or other services for any company mentioned in this document.

PL is registered as Research Analyst under Securities and Exchange Board of India (Research Analysts) Regulations, 2014 PL submits that no material disciplinary action has been taken on us by any Regulatory Authority impacting Equity Research Analysis activities.

PL or its research analysts or its associates or his relatives do not have any financial interest in the subject company.

PL or its research analysts or its associates or his relatives do not have actual/beneficial ownership of one per cent or more securities of the subject company at the end of the month immediately preceding the date of publication of the research report.

PL or its research analysts or its associates or his relatives do not have any material conflict of interest at the time of publication of the research report.

PL or its associates might have received compensation from the subject company in the past twelve months.

PL or its associates might have managed or co-managed public offering of securities for the subject company in the past twelve months or mandated by the subject company for any other assignment in the past twelve months.

PL or its associates might have received any compensation for investment banking or merchant banking or brokerage services from the subject company in the past twelve months.

PL or its associates might have received any compensation for products or services other than investment banking or merchant banking or brokerage services from the subject company in the past twelve months PL or its associates might have received any compensation or other benefits from the subject company or third party in connection with the research report.

PL encourages independence in research report preparation and strives to minimize conflict in preparation of research report. PL or its analysts did not receive any compensation or other benefits from the subject Company or third party in connection with the preparation of the research report. PL or its Research Analysts do not have any material conflict of interest at the time of publication of this report.

It is confirmed that Mrs.Vaishali Parekh B.com, Research Analyst of this report has not received any compensation from the companies mentioned in the report in the preceding twelve months compensation of our Research Analysts is not based on any specific merchant banking, investment banking or brokerage service transactions.

The Research analysts for this report certifies that all of the views expressed in this report accurately reflect his or her personal views about the subject company or companies and its or their securities, and no part of his or her compensation was, is or will be, directly or indirectly related to specific recommendations or views expressed in this report.

The research analysts for this report has not served as an officer, director or employee of the subject company PL or its research analysts have not engaged in market making activity for the subject company

Our sales people, traders, and other professionals or affiliates may provide oral or written market commentary or trading strategies to our clients that reflect opinions that are contrary to the opinions expressed herein, and our proprietary trading and investing businesses may make investment decisions that are inconsistent with the recommendations expressed herein. In reviewing these materials, you should be aware that any or all of the foregoing, among other things, may give rise to real or potential conflicts of interest.

PL and its associates, their directors and employees may (a) from time to time, have a long or short position in, and buy or sell the securities of the subject company or (b) be engaged in any other transaction involving such securities and earn brokerage or other compensation or act as a market maker in the financial instruments of the subject company or act as an advisor or lender/borrower to the subject company or may have any other potential conflict of interests with respect to any recommendation and other related information and opinions.