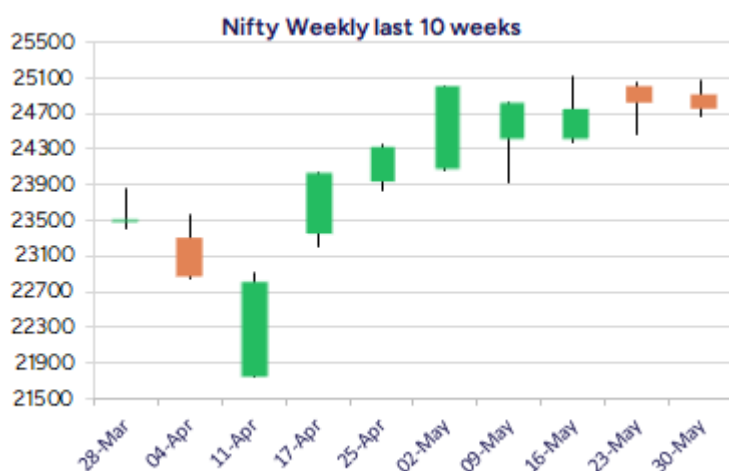
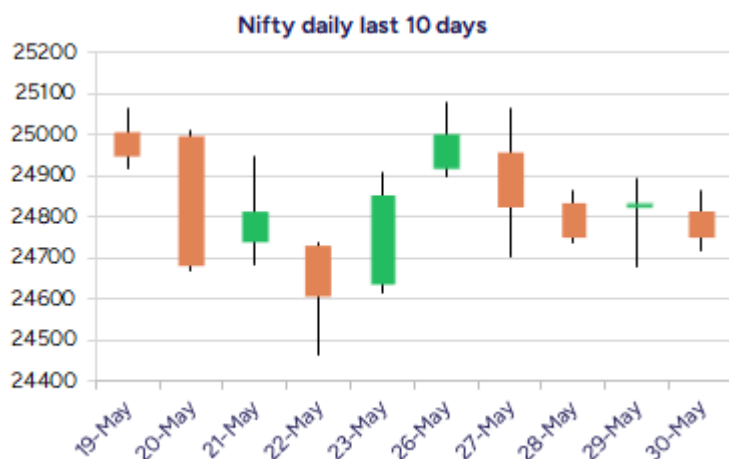


Date: 03rd May 2025

* Sensex 81451.01 -182.01

* Nifty 24750.70 -82.90

* Bank Nifty 55479.70 +203.65



*Blue candle → Close rate > Open rate * Red candle → Close rate < Open rate

Market Preview

Nifty consolidates near 24750 zone

Nifty has been witnessing a rangebound movement with consolidation visible near the 24750 zone and with bias maintained positive, can expect for further upward move in the coming sessions. BankNifty has indicated signs of improvement with strength indicated and can expect for fresh upward movement once the 56000 zone is decisively breached above. The market breadth was overall flat with the advance decline indicating a neutral ratio at close.

Market Forecast

Nifty daily range 24600-25000

Nifty, witnessed another session of consolidation near the 24700-24800 zone and with the bias maintained intact, can expect for further rise once a decisive breach above the 25000 zone is confirmed, with upside targets of 26300 and 27200 levels achievable in the coming days. As mentioned earlier, on the downside 24500 zone is positioned as the important and strong support level which needs to be sustained to maintain the overall bias intact.

BankNifty, witnessed a significant pullback in the second half to gather strength and closed near the important hurdle at 55800 zone with bias improving and anticipating a breakout above the 56000 zone with strength indicated and can trigger for fresh upside targets of 57700 and 60300 levels in the coming days. The near-term support shall be maintained near the 54500 zone as mentioned earlier, which needs to be sustained as of now.

The support for the day is seen at 24600 levels while the resistance is seen at 25000 levels. BankNifty would have the daily range of 55400-56400 levels.

| Indices | Period | Closing | % Chng | Trend | Reversal | 2 Sup | 1 Sup | Pivot | 1 Res | 2 Res |
|------------|---------|----------|--------|-------|----------|-------|-------|-------|-------|-------|
| Nifty | Daily | 24750.70 | -0.33% | -4 | 24862.60 | 24631 | 24691 | 24777 | 24837 | 24924 |
| | Weekly | 24750.70 | -0.41% | 11 | 24617.50 | 24438 | 24595 | 24837 | 24993 | 25235 |
| | Monthly | 24750.70 | 1.71% | 1 | 24390.40 | 23422 | 24086 | 24600 | 25265 | 25779 |
| Bank Nifty | Daily | 55749.70 | 0.37% | 3 | 55577.95 | 55183 | 55466 | 55640 | 55923 | 56097 |
| | Weekly | 55749.70 | 0.63% | 3 | 55559.45 | 54724 | 55237 | 55555 | 56068 | 56386 |
| | Monthly | 55749.70 | 1.20% | 2 | 53879.10 | 52648 | 54199 | 55036 | 56587 | 57424 |
| Sensex | Daily | 81451.01 | -0.22% | -4 | 81700.40 | 81067 | 81259 | 81479 | 81671 | 81890 |
| | Weekly | 81451.01 | -0.33% | 11 | 81091.35 | 80302 | 80876 | 81684 | 82259 | 83067 |
| | Monthly | 81451.01 | 1.51% | 1 | 80320.40 | 77296 | 79374 | 81046 | 83123 | 84796 |

| Daily Trend turned Up | | | |
|-----------------------|---------|-----------|----------|
| Scrip Name | LCP | Curr Trnd | Reversal |
| GODFRYPHLP | 8702.5 | -10 | 8340.8 |
| HDFCBANK | 1944.9 | -3 | 1930.35 |
| IBULHSGFIN | 124.12 | -4 | 123.55 |
| ICICIGI | 1875.4 | -4 | 1862.8 |
| INDHOTEL | 769.85 | -2 | 767.5 |
| KTKBANK | 197.91 | -8 | 196.95 |
| MAITHANALL | 1104.25 | -1 | 1100.85 |
| MUTHOOTFIN | 2215.4 | -1 | 2073.2 |
| NHPC | 87.41 | -6 | 87.15 |
| PEL | 1108.2 | -6 | 1107.85 |
| RAYMOND | 629.9 | -2 | 619.6 |
| UNIONBANK | 146.79 | -1 | 142.55 |

* Trends turned Up after a significant period

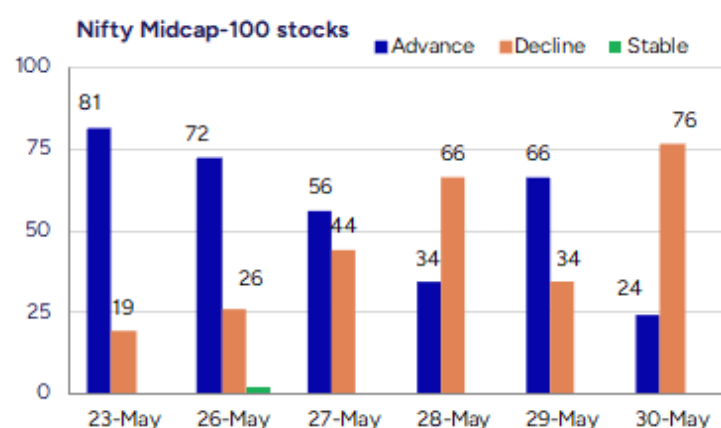
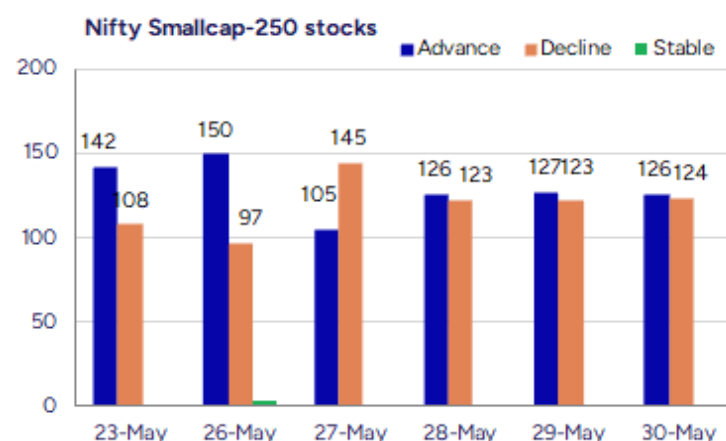
| Daily Trend turned Down | | | |
|-------------------------|---------|-----------|----------|
| Scrip Name | LCP | Curr Trnd | Reversal |
| AARTIIND | 469.25 | 3 | 476.5 |
| ABB | 5971 | 15 | 6016 |
| AMARAJABAT | 1030.75 | 4 | 1061.25 |
| BHEL | 259.83 | 14 | 263.6 |
| CENTURYTEX | 2178.2 | 5 | 2226.65 |
| FSL | 371.45 | 5 | 390.65 |
| INDIACEM | 317.15 | 3 | 335.85 |
| KEC | 832.4 | 14 | 859.35 |
| LTI | 5068.9 | 4 | 5114.7 |
| OIL | 426.8 | 4 | 436.7 |
| SIEMENS | 3265.6 | 15 | 3312.85 |
| VEDL | 435.55 | 4 | 447.15 |

* Trends turned Down after a significant period

Gainers - Losers (Nifty 500 Stocks)

| Gainers | | | |
|-----------------|------------|--------|---------|
| Company Name | Last Price | % Gain | Volume |
| Lords Chloro | 168.66 | 20 | 70300 |
| Vdeal System | 162.4 | 19.99 | 103200 |
| Manugraph Ind | 22.48 | 19.96 | 604493 |
| Mangalam Alloys | 40.3 | 16.98 | 195200 |
| Ravindra Energy | 162.32 | 16.93 | 3291340 |
| Lumax Auto Tech | 811.55 | 16.48 | 3652127 |
| Lypsa Gems | 8.34 | 15.03 | 722846 |

| Losers | | | |
|-----------------|------------|--------|----------|
| Company Name | Last Price | % Loss | Volume |
| Annapurna Swa | 279.85 | -13.87 | 574500 |
| PPL | 405.35 | -11.66 | 482904 |
| Kiri Industries | 642.05 | -11.63 | 6159851 |
| Sona Machinery | 86.9 | -11.33 | 126000 |
| Innovana | 359.3 | -9.97 | 30282 |
| Welspun Living | 132.66 | -9.64 | 12919989 |
| Signpost India | 196.74 | -9.63 | 256687 |



Nifty Daily chart with RSI indicator



BankNifty Daily chart with RSI indicator



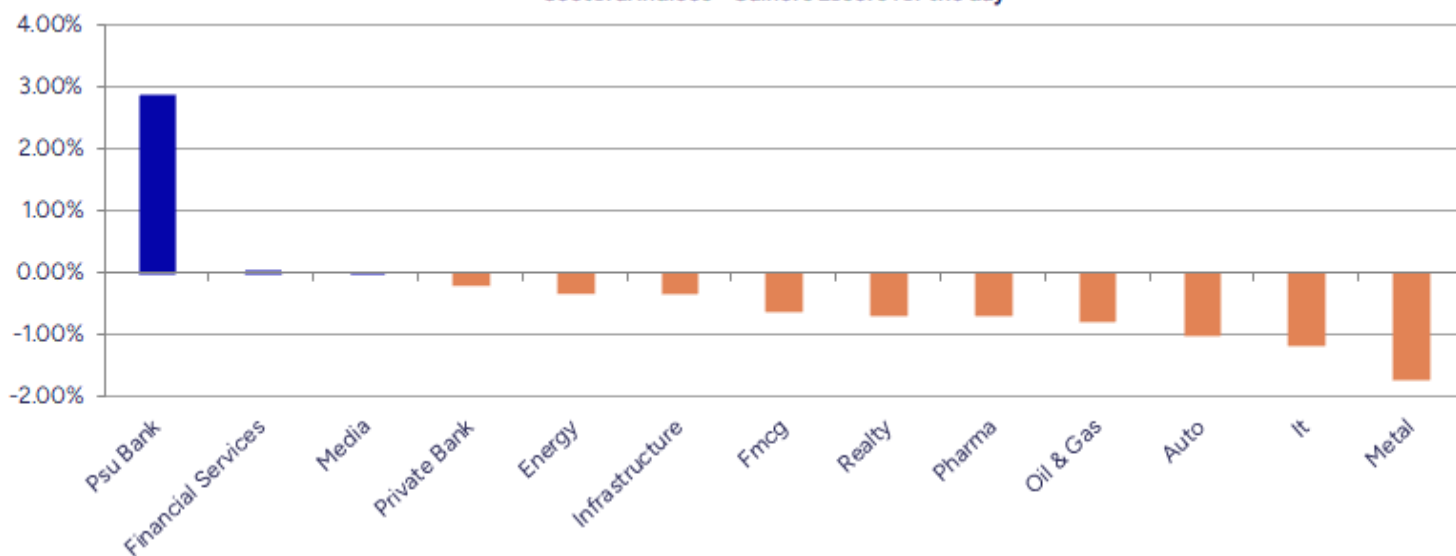
| Breakouts - Cross above 200 DMA | | | |
|---------------------------------|--------|----------|----------|
| Company Name | LCP | Change % | 200 DMA |
| Lords Chloro | 168.66 | 12.68 | 149.68 |
| Manugraph Ind | 22.48 | 8.23 | 20.77 |
| Mangalam Alloys | 40.3 | 8.22 | 37.24 |
| Muthoot Finance | 2215.4 | 6.47 | 2080.78 |
| IIFL Capital | 305.64 | 6.47 | 287.08 |
| R R Kabel | 1425.7 | 5.68 | 1349.02 |
| Modison | 165.71 | 4.66 | 158.33 |
| Giriraj Civil D | 321 | 3.95 | 308.81 |
| NAVA | 492.4 | 3.60 | 475.31 |
| Brooks Labs | 143.33 | 3.09 | 139.04 |
| Zodiac Energy | 523.85 | 2.99 | 508.64 |
| Kronox Lab Scie | 172.18 | 2.49 | 168 |
| Ashiana Housing | 321.4 | 1.93 | 315.3 |
| Bank of Mah | 53.98 | 1.83 | 53.01 |
| Kamat Hotels | 239.44 | 1.66 | 235.54 |
| Assoc Alcohol | 1091.9 | 1.56 | 1075.16 |
| Diensten Tech | 154.95 | 1.41 | 152.8 |
| ZFCVINDIA | 13368 | 1.36 | 13189.12 |

* Stocks crossing above its Simple Moving Average (200DMA)

| Breakdown - Cross below 200 DMA | | | |
|---------------------------------|--------|----------|---------|
| Company Name | LCP | Change % | 200 DMA |
| JagranPrakashan | 76.25 | -7.19 | 82.16 |
| SKP Bearing | 212.85 | -6.79 | 228.36 |
| Mazda | 250.87 | -6.75 | 269.02 |
| S P Apparels | 807 | -5.50 | 853.95 |
| SKM Egg Product | 213.09 | -5.05 | 224.43 |
| STL Global | 15.52 | -4.79 | 16.3 |
| Narmada Agrobas | 17.61 | -4.50 | 18.44 |
| Delta | 83.31 | -4.32 | 87.07 |
| India Cements | 317.15 | -4.31 | 331.42 |
| Winsol Engineer | 254.25 | -4.29 | 265.64 |
| Jindal Stainles | 644.75 | -3.59 | 668.78 |
| IGL | 206.66 | -3.51 | 214.17 |
| ISGEC Heavy Eng | 1212.9 | -3.31 | 1254.43 |
| Holmarc Opto Me | 141.5 | -3.10 | 146.02 |
| Vedanta | 435.55 | -3.06 | 449.28 |
| Apollo Pipes | 457.4 | -2.16 | 467.49 |
| Uniphos Ent | 156.16 | -1.89 | 159.17 |
| Apcotex Ind | 365.95 | -1.85 | 372.86 |

* Stocks crossing below its Simple Moving Average (200DMA)

Sectoral Indices - Gainers Losers for the day



Stocks witnessing a volume surge as compared to their 5 day average volume

Watch out for the stocks that have seen a huge spurt in its share price over the last three days

| Volume Shockers - NSE | | | | | |
|-----------------------|--------|-------|-----------|-----------|-------|
| Company name | LCP | % Chg | Volume | Avg Vol * | % Chg |
| Grill Splendour | 117 | 2.01 | 524400 | 3840 | 13556 |
| Diamond Power | 113.41 | 0.64 | 736935 | 6800 | 10737 |
| Coromandel Int | 2289.4 | -0.84 | 17116291 | 300872 | 5589 |
| Lumax Auto Tech | 811.55 | 16.48 | 3652128 | 67087 | 5344 |
| BEW Engineering | 168.2 | 0.48 | 55000 | 1125 | 4789 |
| TT | 14.7 | 8.01 | 2597882 | 56021 | 4537 |
| Ravindra Energy | 162.32 | 16.93 | 3291343 | 90310 | 3544 |
| Atal | 16.03 | -1.6 | 3573555 | 100889 | 3442 |
| Sky Gold | 393.6 | 0.33 | 881209 | 25989 | 3291 |
| KCK Industries | 40.3 | 0.75 | 450000 | 13600 | 3209 |
| IFB Agro | 703 | 3.71 | 189736 | 6446 | 2843 |
| HEG | 523.5 | 1.78 | 2323996 | 80062 | 2803 |
| CCL Products | 884.15 | 8.52 | 3401953 | 122716 | 2672 |
| Krishival Foods | 274.4 | -3.72 | 31500 | 1200 | 2525 |
| Hind Motors | 33.66 | 0.09 | 9372870 | 416435 | 2151 |
| Mazda | 250.87 | -8.15 | 151453 | 7076 | 2040 |
| Krishna Institu | 684.25 | 5.41 | 1206877 | 59456 | 1930 |
| MMTC Ltd | 85.77 | 5.75 | 122328151 | 6486274 | 1786 |
| Supreme Ind | 4146.2 | -2.38 | 1135904 | 60306 | 1784 |
| BSE Limited | 2674 | 8.5 | 18458167 | 984644 | 1775 |

* the Average Volume of last 5 days

| Price Shockers - NSE | | | | |
|----------------------|--------|-----------|-------|-----------|
| Company name | LCP | Prv Close | % Chg | Volume |
| Ravindra Energy | 162.32 | 119.2 | 36.17 | 3291340 |
| MMTC Ltd | 85.77 | 63.88 | 34.27 | 122325281 |
| Sameera Agro | 86.1 | 66.35 | 29.77 | 59200 |
| Mangalam Alloys | 40.3 | 31.5 | 27.94 | 195200 |
| Federal-Mogul | 450.05 | 360.3 | 24.91 | 639767 |
| Veto Switch | 133 | 109.58 | 21.37 | 1535816 |
| Apollo Micro Sy | 188.92 | 155.81 | 21.25 | 23589360 |
| Lords Chloro | 168.66 | 140.83 | 19.76 | 70300 |
| Manugraph Ind | 22.48 | 18.8 | 19.57 | 604493 |
| Welspun Corp | 935.55 | 783.5 | 19.41 | 5721338 |
| IFB Agro | 703 | 589.4 | 19.27 | 189736 |
| Lumax Auto Tech | 811.55 | 685.5 | 18.39 | 3652127 |
| ALUWIND INFRA | 73.5 | 62.2 | 18.17 | 255000 |
| Fiberweb India | 51.63 | 43.84 | 17.77 | 405687 |
| Eurotex | 15.75 | 13.49 | 16.75 | 23142 |
| Pil Italica | 18.58 | 16 | 16.13 | 2236123 |
| Hind Motors | 33.66 | 28.99 | 16.11 | 9365302 |
| TIL | 367.35 | 317.34 | 15.76 | 40170 |
| Shanti Overseas | 22.74 | 19.65 | 15.73 | 359494 |
| On Door Concept | 154.55 | 133.55 | 15.72 | 30600 |

* the % price rise of the last 3 days

| Symbol | LTP | Chng | % Chng | Volume (lacs) | Turnover (crs.) | 52w High | Diff with 52w H | 52w Low | Diff with 52w L | 365 days % chng | 30 days % chng |
|------------|----------|---------|---------|---------------|-----------------|----------|-----------------|----------|-----------------|-----------------|----------------|
| NIFTY 50 | 24750.70 | -82.90 | -0.33% | 8538.75 | 52246.36 | 26277.35 | 5.81% | 21743.65 | 13.83% | 2.04% | 9.38% |
| ADANIENT | 2518.00 | -22.80 | -0.90% | 6.85 | 173.24 | 3743.90 | 32.74% | 2025.00 | 24.35% | 9.02% | -22.03% |
| ADANIPTS | 1432.30 | -6.30 | -0.44% | 25.75 | 370.16 | 1621.40 | 11.66% | 995.65 | 43.86% | 18.27% | 2.03% |
| APOLLOHOSP | 6886.00 | -37.00 | -0.53% | 9.11 | 629.64 | 7545.35 | 8.74% | 5693.20 | 20.95% | -0.99% | 17.27% |
| ASIANPAINT | 2261.00 | -33.30 | -1.45% | 36.10 | 817.28 | 3394.90 | 33.40% | 2124.75 | 6.41% | -6.40% | -20.89% |
| AXISBANK | 1192.00 | -9.70 | -0.81% | 99.98 | 1194.10 | 1339.65 | 11.02% | 933.50 | 27.69% | 1.21% | 3.62% |
| BAJAJ-AUTO | 8599.00 | -275.50 | -3.10% | 14.35 | 1242.04 | 12774.00 | 32.68% | 7089.35 | 21.29% | 9.85% | -2.16% |
| BAJAJFINSV | 2011.50 | 0.60 | 0.03% | 21.44 | 433.00 | 2135.00 | 5.78% | 1419.05 | 41.75% | -2.71% | 28.09% |
| BAJFINANCE | 9142.00 | -18.00 | -0.20% | 15.04 | 1379.69 | 9660.00 | 5.36% | 6375.70 | 43.39% | 1.22% | 35.22% |
| BEL | 385.20 | -1.60 | -0.41% | 231.41 | 892.97 | 393.50 | 2.11% | 230.00 | 67.48% | 21.98% | 32.40% |
| BHARTIARTL | 1859.70 | -3.90 | -0.21% | 167.13 | 3102.47 | 1917.00 | 2.99% | 1219.05 | 52.55% | 2.18% | 35.33% |
| CIPLA | 1463.90 | -13.00 | -0.88% | 70.41 | 1033.47 | 1702.05 | 13.99% | 1335.00 | 9.66% | -4.19% | -1.11% |
| COALINDIA | 397.40 | -0.80 | -0.20% | 65.66 | 262.17 | 543.55 | 26.89% | 349.25 | 13.79% | 2.34% | -18.14% |
| DRREDDY | 1251.00 | 2.80 | 0.22% | 31.62 | 395.41 | 1421.49 | 11.99% | 1020.00 | 22.65% | 6.14% | -79.20% |
| EICHERMOT | 5354.00 | -25.00 | -0.46% | 9.16 | 489.14 | 5906.50 | 9.35% | 4253.85 | 25.86% | -3.58% | 13.35% |
| GRASIM | 2536.00 | -37.60 | -1.46% | 12.04 | 307.37 | 2877.75 | 11.88% | 2171.60 | 16.78% | -6.27% | 7.21% |
| HCLTECH | 1631.50 | -33.20 | -1.99% | 44.09 | 723.46 | 2012.20 | 18.92% | 1235.00 | 32.11% | 6.10% | 23.03% |
| HDFCBANK | 1941.50 | 14.00 | 0.73% | 143.74 | 2787.59 | 1978.90 | 1.89% | 1454.00 | 33.53% | 0.98% | 27.79% |
| HDFCLIFE | 776.25 | -4.65 | -0.60% | 31.84 | 247.66 | 791.10 | 1.88% | 511.40 | 51.79% | 9.21% | 38.99% |
| HEROMOTOCO | 4310.10 | -46.50 | -1.07% | 9.14 | 395.20 | 6246.25 | 31.00% | 3344.00 | 28.89% | 13.08% | -15.30% |
| HINDALCO | 633.70 | -16.30 | -2.51% | 90.54 | 576.01 | 772.65 | 17.98% | 546.45 | 15.97% | 4.41% | -7.84% |
| HINDUNILVR | 2346.00 | -20.70 | -0.87% | 32.89 | 773.34 | 3035.00 | 22.70% | 2136.00 | 9.83% | 1.94% | -0.28% |
| ICICIBANK | 1446.10 | -10.40 | -0.71% | 118.04 | 1710.39 | 1471.60 | 1.73% | 1051.05 | 37.59% | 1.87% | 32.17% |
| INDUSINDBK | 818.45 | -5.70 | -0.69% | 56.30 | 459.53 | 1550.00 | 47.20% | 606.00 | 35.06% | -1.53% | -43.56% |
| INFY | 1561.90 | -1.70 | -0.11% | 131.48 | 2055.10 | 2006.45 | 22.16% | 1307.00 | 19.50% | 5.88% | 9.28% |
| ITC | 418.75 | - | #VALUE! | 306.55 | 1280.97 | 528.50 | 20.77% | 390.15 | 7.33% | -1.70% | -2.83% |
| JIOFIN | 286.20 | -1.65 | -0.57% | 178.81 | 513.88 | 368.30 | 22.29% | 198.65 | 44.07% | 11.73% | -17.57% |
| JSWSTEEL | 994.00 | -12.20 | -1.21% | 17.11 | 170.54 | 1074.90 | 7.53% | 823.80 | 20.66% | -2.84% | 11.56% |
| KOTAKBANK | 2077.30 | -4.30 | -0.21% | 98.08 | 2034.01 | 2301.90 | 9.76% | 1602.45 | 29.63% | -5.60% | 23.33% |
| LT | 3672.00 | 16.70 | 0.46% | 25.71 | 944.61 | 3963.50 | 7.35% | 2965.30 | 23.83% | 10.02% | 0.56% |
| M&M | 2971.00 | -38.00 | -1.26% | 37.00 | 1101.63 | 3270.95 | 9.17% | 2425.00 | 22.52% | 3.42% | 18.76% |
| MARUTI | 12323.00 | -69.00 | -0.56% | 3.51 | 433.21 | 13680.00 | 9.92% | 10725.00 | 14.90% | 4.65% | -3.10% |
| NESTLEIND | 2393.80 | -41.20 | -1.69% | 10.67 | 256.75 | 2778.00 | 13.83% | 2110.00 | 13.45% | 1.99% | -1.66% |
| NTPC | 334.75 | -4.60 | -1.36% | 191.43 | 641.09 | 448.45 | 25.35% | 292.80 | 14.33% | -4.93% | -6.93% |
| ONGC | 239.20 | -3.84 | -1.58% | 101.08 | 243.15 | 345.00 | 30.67% | 205.00 | 16.68% | -1.07% | -10.60% |
| POWERGRID | 289.70 | -3.40 | -1.16% | 217.88 | 632.91 | 366.25 | 20.90% | 247.30 | 17.15% | -3.25% | -7.74% |
| RELIANCE | 1417.90 | 0.10 | 0.01% | 137.88 | 1957.75 | 1608.80 | 11.87% | 1114.85 | 27.18% | 1.29% | -50.80% |
| SBILIFE | 1809.00 | -16.00 | -0.88% | 13.64 | 247.67 | 1936.00 | 6.56% | 1307.70 | 38.33% | 5.49% | 29.18% |
| SBIN | 814.00 | 16.65 | 2.09% | 220.37 | 1779.07 | 912.00 | 10.75% | 680.00 | 19.71% | -1.87% | -3.08% |
| SHRIRAMFIN | 639.35 | -12.90 | -1.98% | 66.93 | 429.68 | 730.45 | 12.47% | 438.60 | 45.77% | 6.11% | -72.53% |
| SUNPHARMA | 1674.90 | -24.90 | -1.46% | 36.41 | 613.10 | 1960.35 | 14.56% | 1377.20 | 21.62% | -5.85% | 14.93% |
| TATACONSUM | 1109.00 | -0.80 | -0.07% | 24.76 | 274.10 | 1250.10 | 11.29% | 882.90 | 25.61% | -5.06% | 3.59% |
| TATAMOTORS | 718.65 | -5.80 | -0.80% | 145.32 | 1044.81 | 1179.00 | 39.05% | 535.75 | 34.14% | 8.84% | -23.22% |
| TATASTEEL | 161.00 | -2.12 | -1.30% | 327.39 | 528.04 | 184.60 | 12.78% | 122.62 | 31.30% | 15.28% | -6.39% |
| TCS | 3460.00 | -38.10 | -1.09% | 34.04 | 1182.57 | 4592.25 | 24.66% | 3056.05 | 13.22% | 0.74% | -8.03% |
| TECHM | 1573.00 | -27.00 | -1.69% | 27.81 | 438.21 | 1807.70 | 12.98% | 1193.65 | 31.78% | 7.00% | 24.37% |
| TITAN | 3550.00 | -38.30 | -1.07% | 9.63 | 343.24 | 3867.00 | 8.20% | 2925.00 | 21.37% | 6.21% | 6.15% |
| TRENT | 5625.00 | -32.00 | -0.57% | 14.41 | 814.24 | 8345.00 | 32.59% | 4196.00 | 34.06% | 4.92% | 21.08% |
| ULTRACEMCO | 11176.00 | -93.00 | -0.83% | 3.94 | 442.12 | 12339.00 | 9.43% | 9534.95 | 17.21% | -5.06% | 12.43% |
| WIPRO | 249.60 | -0.54 | -0.22% | 138.58 | 346.06 | 324.60 | 23.11% | 208.50 | 19.71% | 3.62% | -44.51% |
| ETERNAL | 239.75 | 11.38 | 4.98% | 4675.73 | 11102.52 | 304.70 | 21.32% | 146.30 | 63.88% | -1.19% | #VALUE! |

Disclaimer / Disclosures

ANALYST CERTIFICATION

I, Mrs. Vaishali Parekh B.com, Research Analyst, author and the name subscribed to this report, hereby certify that all of the views expressed in this research report accurately reflect our views about the subject issuer(s) or securities. We also certify that no part of our compensation was, is, or will be directly or indirectly related to the specific recommendation(s) or view(s) in this report.

Terms & conditions and other disclosures:

Prabhudas Lilladher Pvt. Ltd, Mumbai, India (hereinafter referred to as "PL") is engaged in the business of Stock Broking, Portfolio Manager, Depository Participant and distribution for third party financial products. PL is a subsidiary of Prabhudas Lilladher Advisory Services Pvt Ltd. which has its various subsidiaries engaged in business of commodity broking, investment banking, financial services (margin funding) and distribution of third party financial/other products, details in respect of which are available at www.plindia.com

This document has been prepared by the Research Division of PL and is meant for use by the recipient only as information and is not for circulation. This document is not to be reported or copied or made available to others without prior permission of PL. It should not be considered or taken as an offer to sell or a solicitation to buy or sell any security.

The information contained in this report has been obtained from sources that are considered to be reliable. However, PL has not independently verified the accuracy or completeness of the same. Neither PL nor any of its affiliates, its directors or its employees accepts any responsibility of whatsoever nature for the information, statements and opinion given, made available or expressed herein or for any omission therein.

Recipients of this report should be aware that past performance is not necessarily a guide to future performance and value of investments can go down as well. The suitability or otherwise of any investments will depend upon the recipient's particular circumstances and, in case of doubt, advice should be sought from an independent expert/advisor.

Either PL or its affiliates or its directors or its employees or its representatives or its clients or their relatives may have position(s), make market, act as principal or engage in transactions of securities of companies referred to in this report and they may have used the research material prior to publication.

PL may from time to time solicit or perform investment banking or other services for any company mentioned in this document.

PL is registered as Research Analyst under Securities and Exchange Board of India (Research Analysts) Regulations, 2014 PL submits that no material disciplinary action has been taken on us by any Regulatory Authority impacting Equity Research Analysis activities.

PL or its research analysts or its associates or his relatives do not have any financial interest in the subject company.

PL or its research analysts or its associates or his relatives do not have actual/beneficial ownership of one per cent or more securities of the subject company at the end of the month immediately preceding the date of publication of the research report.

PL or its research analysts or its associates or his relatives do not have any material conflict of interest at the time of publication of the research report.

PL or its associates might have received compensation from the subject company in the past twelve months.

PL or its associates might have managed or co-managed public offering of securities for the subject company in the past twelve months or mandated by the subject company for any other assignment in the past twelve months.

PL or its associates might have received any compensation for investment banking or merchant banking or brokerage services from the subject company in the past twelve months.

PL or its associates might have received any compensation for products or services other than investment banking or merchant banking or brokerage services from the subject company in the past twelve months PL or its associates might have received any compensation or other benefits from the subject company or third party in connection with the research report.

PL encourages independence in research report preparation and strives to minimize conflict in preparation of research report. PL or its analysts did not receive any compensation or other benefits from the subject Company or third party in connection with the preparation of the research report. PL or its Research Analysts do not have any material conflict of interest at the time of publication of this report.

It is confirmed that Mrs.Vaishali Parekh B.com, Research Analyst of this report has not received any compensation from the companies mentioned in the report in the preceding twelve months compensation of our Research Analysts is not based on any specific merchant banking, investment banking or brokerage service transactions.

The Research analysts for this report certifies that all of the views expressed in this report accurately reflect his or her personal views about the subject company or companies and its or their securities, and no part of his or her compensation was, is or will be, directly or indirectly related to specific recommendations or views expressed in this report.

The research analysts for this report has not served as an officer, director or employee of the subject company PL or its research analysts have not engaged in market making activity for the subject company

Our sales people, traders, and other professionals or affiliates may provide oral or written market commentary or trading strategies to our clients that reflect opinions that are contrary to the opinions expressed herein, and our proprietary trading and investing businesses may make investment decisions that are inconsistent with the recommendations expressed herein. In reviewing these materials, you should be aware that any or all of the foregoing, among other things, may give rise to real or potential conflicts of interest.

PL and its associates, their directors and employees may (a) from time to time, have a long or short position in, and buy or sell the securities of the subject company or (b) be engaged in any other transaction involving such securities and earn brokerage or other compensation or act as a market maker in the financial instruments of the subject company or act as an advisor or lender/borrower to the subject company or may have any other potential conflict of interests with respect to any recommendation and other related information and opinions.