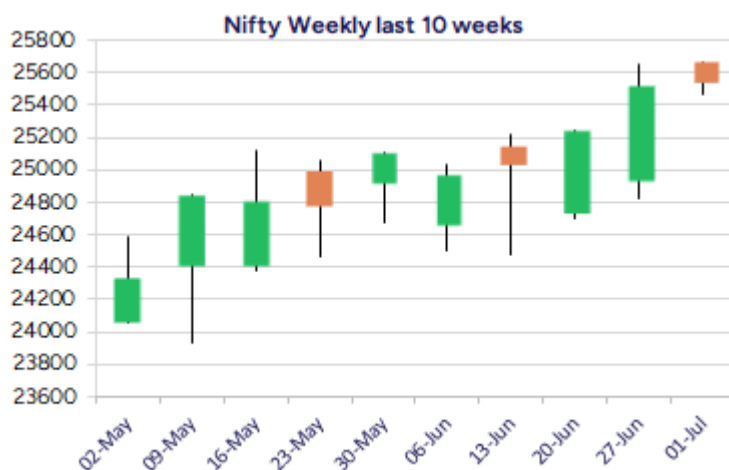
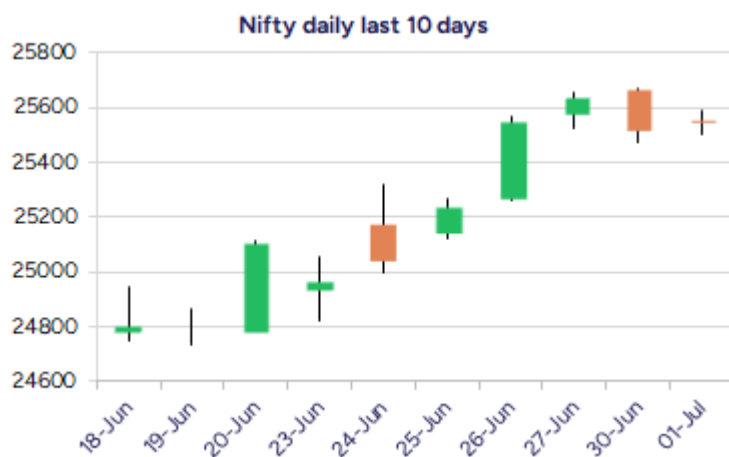


Date: 02nd July 2025

* Sensex 83697.29 + 90.83

* Nifty 25541.80 + 24.75

* Bank Nifty 57459.45 + 146.70



*Blue candle → Close rate > Open rate * Red candle → Close rate < Open rate

Market Preview

Nifty consolidates near 25550 zone

Nifty for most part of the session remained rangebound with sluggish move with the bias and sentiment maintained positive. BankNifty on the other hand showed some positive signs of improvement with the PSU Banks indicating strong pick up anticipating for further rise in the coming sessions. The market breadth was overall flat slightly shifted towards the positive side with the advance decline indicating a neutral ratio at close.

Market Forecast

Nifty daily range 25400-25700

Nifty index witnessed a very narrow rangebound session hovering near the 25500-25550 zone with consolidation happening maintaining the bias positive and anticipating for further rise in the coming days. We maintain our stance for the index, having the near-term support positioned near 25250-25300 zone and on the upside, the scope for higher targets of 25700 and 26200 levels is achievable, with the undertone maintained strong.

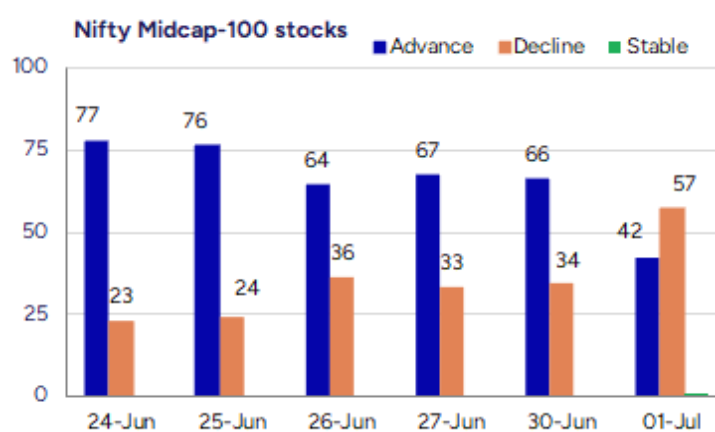
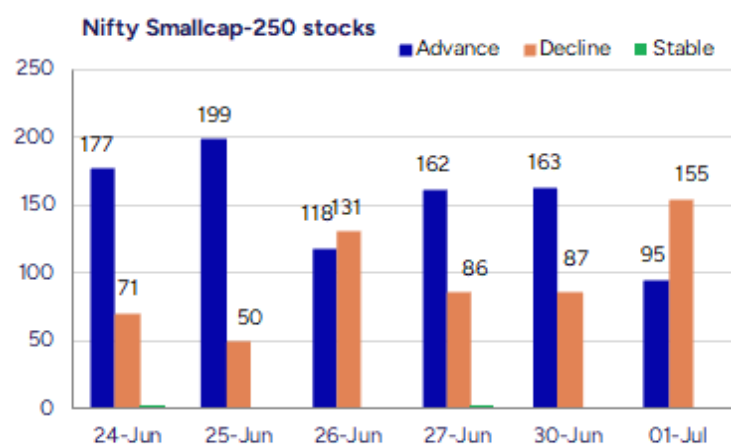
BankNifty overall had a sluggish session with some positive move witnessed in the second half among the financial counter anticipating for further upward move once a decisive breach above the 57600 zone is confirmed. The index has sustained near the peak zone with bias maintained strong having the important support near 56000 zone which needs to be sustained and, on the upside, with the bias improving can expect for fresh targets of 58500 and 60000 levels in the coming days.

The support for the day is seen at 25400 levels while the resistance is seen at 25700 levels. BankNifty would have the daily range of 57000-58000 levels.

Indices	Period	Closing	% Chng	Trend	Reversal	2 Sup	1 Sup	Pivot	1 Res	2 Res
Nifty	Daily	25541.80	0.10%	8	25476.50	25454	25498	25546	25590	25637
	Weekly	25637.80	2.09%	2	25312.05	24545	25091	25372	25919	26199
	Monthly	25517.05	3.10%	2	25312.05	24028	24772	25217	25962	26407
Bank Nifty	Daily	57459.45	0.26%	8	57225.70	56998	57229	57381	57612	57765
	Weekly	57443.90	2.12%	1	56982.40	55211	56327	56900	58017	58589
	Monthly	57312.75	2.80%	3	54910.25	54237	55775	56687	58226	59138
Sensex	Daily	83697.29	0.11%	8	83483.05	83413	83555	83715	83857	84016
	Weekly	84058.90	2.00%	2	83079.45	80602	82330	83209	84938	85817
	Monthly	83606.46	2.65%	2	81262.65	79027	81317	82703	84992	86378

Gainers - Losers (Nifty 500 Stocks)

Gainers				Losers			
Company Name	Last Price	% Gain	Volume	Company Name	Last Price	% Loss	Volume
Gabriel India	842.75	20	422850	Premium Plast	38.2	-11.78	30000
Tamil Telecom	15.86	19.97	1641744	Bombay Metrics	41.9	-10.95	4800
Century Extr	24.75	12.96	1883174	Italian Edibles	36.4	-9	26000
Zota Health Car	1090.45	11.9	1040977	Sahaj Fashions	10.15	-8.56	4000
Filatex India	61.51	11.41	11931031	Force Motors	14736	-8.34	286104
Lords Chloro	174.29	11.29	251594	Service Care	56.2	-7.49	8000
Innovana	609.8	11	289832	Coromandel Int	2325.6	-7.17	1186803



Nifty Daily chart with RSI indicator



BankNifty Daily chart with RSI indicator

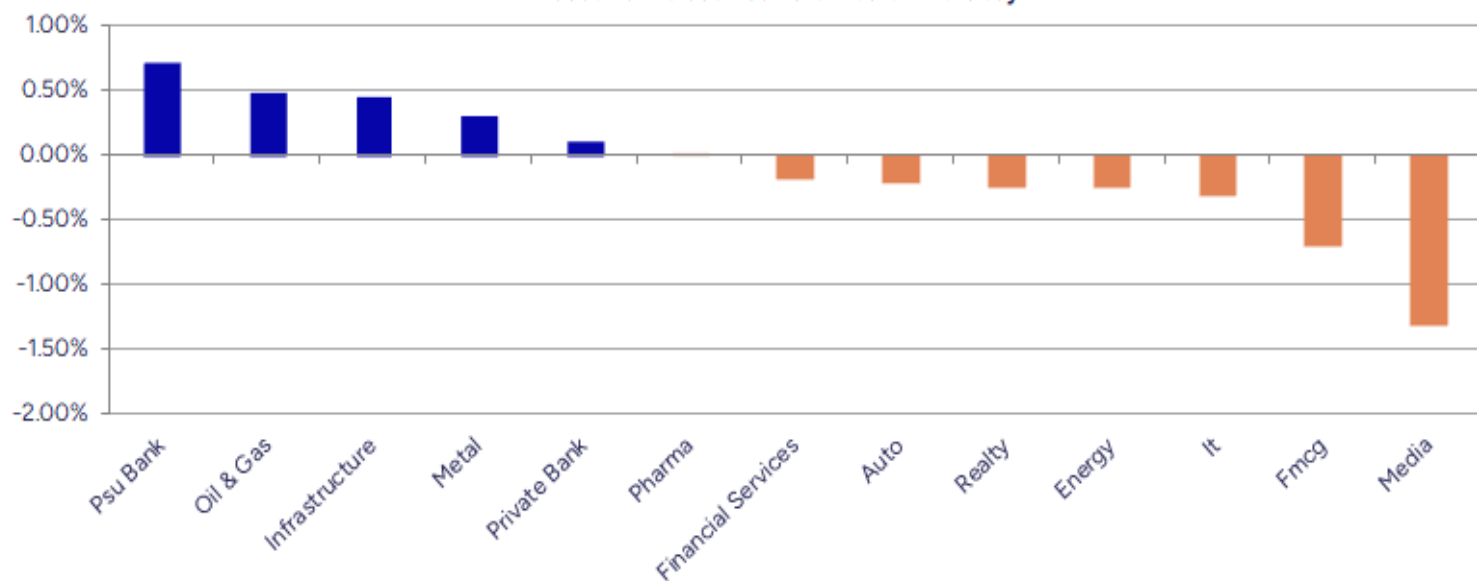


Breakouts - Cross above 200 DMA				Breakdown - Cross below 200 DMA			
Company Name	LCP	Change %	200 DMA	Company Name	LCP	Change %	200 DMA
Sinclairs Hotel	101.85	5.08	96.93	Borosil Renew	494.5	-3.78	513.95
Atmastco L	234.45	4.40	224.56	Caplin Labs	1998.2	-3.23	2064.93
Aristo Bio-Tech	124.05	4.08	119.19	Celebrity Fash	13.45	-3.10	13.88
Sharda Motor	1963	4.07	1886.26	Sigachi Ind	46.05	-3.03	47.49
V-Marc	359.7	4.02	345.8	GVP Infotech	10.61	-2.48	10.88
Pattech Fitwell	93.15	4.00	89.57	Touchwood Enter	116.36	-2.47	119.31
Signet Ind	64.8	3.83	62.41	Rajputana Indus	80.65	-2.05	82.34
Keystone Real	633.95	3.46	612.74	Yash Optics & L	82.7	-1.83	84.24
Phantom Digital	262.5	3.35	254	ICE Make Refrig	783.95	-1.46	795.54
Weizmann	126.34	3.17	122.46	Himadri Special	502.9	-1.43	510.18
Munjal Showa	142.08	3.05	137.88	Nureca	278.35	-1.36	282.19
Dangee Dums	6.31	2.94	6.13	SUMITOMO	517.95	-1.35	525.05
KKV Agro Powers	734	2.69	714.78	Soma Textile	42.93	-1.20	43.45
Global Vectra	269.1	2.25	263.17	Flair Writing	263.95	-1.18	267.11
Abhishek	69.15	2.11	67.72	Dhani Services	67.46	-0.88	68.06
Websol Energy	1335.5	2.10	1308.02	Mayur Uniquoter	552.5	-0.82	557.09
IVP	196.8	2.08	192.79	Adani Total Gas	666.7	-0.80	672.1
Zodiac Clothing	115.15	2.03	112.86	GAIL	189.62	-0.59	190.75

* Stocks crossing above its Simple Moving Average (200DMA)

* Stocks crossing below its Simple Moving Average (200DMA)

Sectoral Indices - Gainers Losers for the day



Stocks witnessing a volume surge as compared to their 5 day average volume

Watch out for the stocks that have seen a huge spurt in its share price over the last three days

Volume Shockers - NSE					
Company name	LCP	% Chg	Volume	Avg Vol *	% Chg
Diamond Power	138.23	6.8	20900596	6800	307244
Jindal Worldwid	53.89	-3.35	30246280	138074	21806
Remsons Ind	137.56	-6.55	4094314	21094	19309
Signpost India	213.25	9.87	6917811	85428	7998
Tamil Telecom	13.22	19.96	786766	10569	7344
Alembic Pharma	1039.1	7.25	15274398	233892	6431
Jai Balaji Ind	130.25	-3.22	3326806	54390	6017
Hb Stockhol	115.72	0.93	629292	10914	5666
Jyoti CNC Auto	1059	-5.92	18190816	404144	4401
Balaxi Pharma	50.02	-0.06	1498605	38449	3798
KCK Industries	43.05	5.64	520000	13600	3724
Prime Focus	138.83	1.46	5634502	152269	3600
Sky Gold	314.1	-2.92	840502	25989	3134
Sunrest	50.45	-2.98	70400	2240	3043
Marathon Realty	652.6	1.98	1566423	50063	3029
Raymond	709.4	13.62	17936516	587498	2953
Sigachi Ind	48.76	-11.54	31901656	1046438	2949
Thomas Scott	383.15	-5	117880	4062	2802
Rattan Power	15.52	7.85	431967230	1.6E+07	2603
Digjam	34.47	5	67839	2744	2372

* the Average Volume of last 5 days

Price Shockers - NSE				
Company name	LCP	Prv Close	% Chg	Volume
Tamil Telecom	15.86	11.02	43.92	1641744
Gabriel India	842.75	668.7	26.03	422850
Century Extr	24.75	20.17	22.71	1883174
Raymond	757	624.35	21.25	24777646
Innovana	609.8	516.6	18.04	289832
Best Agrolife	379.45	323.05	17.46	386970
Heranba	350.35	304.4	15.1	256863
AION-TECH	77.02	66.99	14.97	411805
Shemaroo Ent	145.35	126.84	14.59	582649
Euro India Fres	248.25	216.69	14.56	89885
Sinclairs Hotel	101.85	88.96	14.49	712239
Signpost India	221.36	194.1	14.04	1836600
Banco Products	670.25	589.2	13.76	1437821
Patel Integrate	17.61	15.54	13.32	1238349

* the % price rise of the last 3 days

Nifty 50 stocks - Summary Details											
Symbol	LTP	Chng	% Chng	Volume (lacs)	Turnover (crs.)	52w High	Diff with 52w H	52w Low	Diff with 52w L	365 days % chng	30 days % chng
NIFTY 50	25541.80	24.75	0.10%	2606.26	23917.31	26277.35	2.80%	21743.65	17.47%	3.10%	6.27%
ADANIENT	2626.00	6.60	0.25%	7.29	191.39	3258.00	19.40%	2025.00	29.68%	3.95%	-17.56%
ADANIPTS	1443.50	-6.70	-0.46%	21.31	308.71	1604.95	10.06%	995.65	44.98%	1.21%	-1.89%
APOLLOHOSP	7505.00	263.00	3.63%	18.73	1403.59	7584.50	1.05%	6001.00	25.06%	5.25%	17.08%
ASIANPAINT	2370.10	29.00	1.24%	12.32	292.30	3394.90	30.19%	2124.75	11.55%	3.63%	-19.74%
AXISBANK	1173.50	-25.70	-2.14%	87.01	1022.61	1339.65	12.40%	933.50	25.71%	0.59%	-5.22%
BAJAJ-AUTO	8395.00	19.00	0.23%	3.64	304.15	12774.00	34.28%	7089.35	18.42%	-2.68%	-11.85%
BAJAJFINSV	2055.00	-1.00	-0.05%	10.02	205.91	2135.00	3.75%	1523.25	34.91%	1.91%	29.46%
BAJFINANCE	937.90	1.40	0.15%	53.81	503.02	978.80	4.18%	642.50	45.98%	-89.80%	-86.84%
BEL	432.90	11.40	2.70%	354.05	1529.94	436.00	0.71%	240.25	80.19%	9.59%	37.79%
BHARTIARTL	2015.30	5.70	0.28%	37.69	760.74	2039.00	1.16%	1408.45	43.09%	8.26%	39.16%
CIPLA	1514.00	8.10	0.54%	11.13	167.82	1702.05	11.05%	1335.00	13.41%	2.74%	1.70%
COALINDIA	389.45	-2.50	-0.64%	59.95	234.28	543.55	28.35%	349.25	11.51%	-1.35%	-17.16%
DRREDDY	1282.00	-1.30	-0.10%	18.51	237.19	1421.49	9.81%	1020.00	25.69%	2.57%	-79.96%
EICHERMOT	5715.00	58.50	1.03%	5.34	303.97	5906.50	3.24%	4508.75	26.75%	6.06%	21.05%
GRASIM	2865.00	20.50	0.72%	5.36	152.75	2896.00	1.07%	2276.95	25.83%	11.73%	6.52%
HCLTECH	1718.00	-10.60	-0.61%	16.40	282.85	2012.20	14.62%	1302.75	31.87%	5.62%	18.43%
HDFCBANK	2011.10	9.60	0.48%	71.95	1446.20	2027.10	0.79%	1588.05	26.64%	2.91%	18.87%
HDFCLIFE	810.20	-4.10	-0.50%	25.97	210.78	820.75	1.29%	584.30	38.66%	4.82%	36.85%
HEROMOTOCO	4229.00	-8.10	-0.19%	4.80	202.67	6246.25	32.30%	3344.00	26.47%	-1.68%	-24.06%
HINDALCO	694.70	1.85	0.27%	54.69	378.03	772.65	10.09%	546.45	27.13%	9.37%	-0.10%
HINDUNILVR	2298.00	3.40	0.15%	7.60	174.37	3035.00	24.28%	2136.00	7.58%	-2.29%	-7.22%
ICICIBANK	1431.70	-14.10	-0.98%	77.61	1114.05	1471.60	2.71%	1153.00	24.17%	#VALUE!	20.52%
INDUSINDBK	879.90	7.80	0.89%	57.29	504.29	1498.00	41.26%	606.00	45.20%	6.75%	-40.45%
INFY	1603.00	1.20	0.07%	41.79	671.60	2006.45	20.11%	1307.00	22.65%	2.50%	2.24%
ITC	415.10	-1.35	-0.32%	136.70	569.17	528.50	21.46%	390.15	6.39%	-0.38%	-1.99%
JIOFIN	330.20	3.45	1.06%	206.82	681.71	363.00	9.04%	198.65	66.22%	13.99%	-8.77%
JSWSTEEL	1029.10	8.60	0.84%	9.89	101.31	1074.90	4.26%	854.15	20.48%	2.72%	9.55%
KOTAKBANK	2182.00	18.50	0.86%	40.26	876.16	2301.90	5.21%	1679.05	29.95%	4.28%	20.03%
LT	3665.00	-4.80	-0.13%	10.54	386.37	3963.50	7.53%	2965.30	23.60%	-0.14%	3.42%
M&M	3176.00	-7.20	-0.23%	14.07	448.70	3270.95	2.90%	2425.00	30.97%	6.93%	11.04%
MARUTI	12432.00	32.00	0.26%	2.83	351.85	13680.00	9.12%	10725.00	15.92%	0.66%	3.04%
NESTLEIND	2410.50	-54.80	-2.22%	5.37	130.05	2778.00	13.23%	2110.00	14.24%	2.88%	-3.38%
NTPC	332.50	-2.40	-0.72%	89.02	296.75	448.45	25.86%	292.80	13.56%	0.30%	-11.48%
ONGC	243.19	-1.02	-0.42%	84.68	205.77	345.00	29.51%	205.00	18.63%	2.01%	-10.94%
POWERGRID	297.95	-1.95	-0.65%	123.48	368.88	366.25	18.65%	247.30	20.48%	3.50%	-9.38%
RELIANCE	1526.80	26.20	1.75%	103.67	1578.86	1608.80	5.10%	1114.85	36.95%	5.61%	-52.07%
SBILIFE	1860.10	21.80	1.19%	6.67	123.43	1936.00	3.92%	1372.55	35.52%	1.44%	23.21%
SBIN	820.20	-0.15	-0.02%	114.55	939.06	899.00	8.77%	680.00	20.62%	0.99%	-3.37%
SHRIRAMFIN	696.05	-10.80	-1.53%	35.24	246.32	730.45	4.71%	493.35	41.09%	10.56%	-75.72%
SUNPHARMA	1666.50	-9.20	-0.55%	32.98	549.13	1960.35	14.99%	1498.30	11.23%	-0.11%	10.18%
TATACONSUM	1096.00	-2.90	-0.26%	9.72	106.23	1250.10	12.33%	882.90	24.14%	-0.67%	0.13%
TATAMOTORS	683.80	-4.20	-0.61%	68.65	470.95	1179.00	42.00%	535.75	27.63%	-4.38%	-30.49%
TATASTEEL	159.80	0.04	0.03%	178.22	283.88	178.19	10.32%	122.62	30.32%	-0.78%	-8.19%
TCS	3430.00	-32.00	-0.92%	23.75	816.65	4592.25	25.31%	3056.05	12.24%	-0.04%	-11.33%
TECHM	1670.10	-16.90	-1.00%	16.88	282.94	1807.70	7.61%	1209.40	38.09%	7.19%	17.94%
TITAN	3697.00	6.80	0.18%	9.47	350.75	3867.00	4.40%	2925.00	26.39%	3.80%	8.40%
TRENT	6137.00	-80.50	-1.29%	5.58	343.32	8345.00	26.46%	4488.00	36.74%	10.17%	13.46%
ULTRACEMCO	12195.00	102.00	0.84%	2.07	252.77	12339.00	1.17%	10047.85	21.37%	7.88%	3.64%
WIPRO	264.30	-1.70	-0.64%	38.85	103.06	324.60	18.58%	228.00	15.92%	6.53%	-48.34%
ETERNAL	260.85	-3.30	-1.25%	172.07	450.01	304.70	14.39%	194.56	34.07%	10.84%	#VALUE!

Disclaimer / Disclosures

ANALYST CERTIFICATION

I, Mrs. Vaishali Parekh B.com, Research Analyst, author and the name subscribed to this report, hereby certify that all of the views expressed in this research report accurately reflect our views about the subject issuer(s) or securities. We also certify that no part of our compensation was, is, or will be directly or indirectly related to the specific recommendation(s) or view(s) in this report.

Terms & conditions and other disclosures:

Prabhudas Lilladher Pvt. Ltd, Mumbai, India (hereinafter referred to as "PL") is engaged in the business of Stock Broking, Portfolio Manager, Depository Participant and distribution for third party financial products. PL is a subsidiary of Prabhudas Lilladher Advisory Services Pvt Ltd. which has its various subsidiaries engaged in business of commodity broking, investment banking, financial services (margin funding) and distribution of third party financial/other products, details in respect of which are available at www.plindia.com

This document has been prepared by the Research Division of PL and is meant for use by the recipient only as information and is not for circulation. This document is not to be reported or copied or made available to others without prior permission of PL. It should not be considered or taken as an offer to sell or a solicitation to buy or sell any security.

The information contained in this report has been obtained from sources that are considered to be reliable. However, PL has not independently verified the accuracy or completeness of the same. Neither PL nor any of its affiliates, its directors or its employees accepts any responsibility of whatsoever nature for the information, statements and opinion given, made available or expressed herein or for any omission therein.

Recipients of this report should be aware that past performance is not necessarily a guide to future performance and value of investments can go down as well. The suitability or otherwise of any investments will depend upon the recipient's particular circumstances and, in case of doubt, advice should be sought from an independent expert/advisor.

Either PL or its affiliates or its directors or its employees or its representatives or its clients or their relatives may have position(s), make market, act as principal or engage in transactions of securities of companies referred to in this report and they may have used the research material prior to publication.

PL may from time to time solicit or perform investment banking or other services for any company mentioned in this document.

PL is registered as Research Analyst under Securities and Exchange Board of India (Research Analysts) Regulations, 2014 PL submits that no material disciplinary action has been taken on us by any Regulatory Authority impacting Equity Research Analysis activities.

PL or its research analysts or its associates or his relatives do not have any financial interest in the subject company.

PL or its research analysts or its associates or his relatives do not have actual/beneficial ownership of one per cent or more securities of the subject company at the end of the month immediately preceding the date of publication of the research report.

PL or its research analysts or its associates or his relatives do not have any material conflict of interest at the time of publication of the research report.

PL or its associates might have received compensation from the subject company in the past twelve months.

PL or its associates might have managed or co-managed public offering of securities for the subject company in the past twelve months or mandated by the subject company for any other assignment in the past twelve months.

PL or its associates might have received any compensation for investment banking or merchant banking or brokerage services from the subject company in the past twelve months.

PL or its associates might have received any compensation for products or services other than investment banking or merchant banking or brokerage services from the subject company in the past twelve months PL or its associates might have received any compensation or other benefits from the subject company or third party in connection with the research report.

PL encourages independence in research report preparation and strives to minimize conflict in preparation of research report. PL or its analysts did not receive any compensation or other benefits from the subject Company or third party in connection with the preparation of the research report. PL or its Research Analysts do not have any material conflict of interest at the time of publication of this report.

It is confirmed that Mrs.Vaishali Parekh B.com, Research Analyst of this report has not received any compensation from the companies mentioned in the report in the preceding twelve months compensation of our Research Analysts is not based on any specific merchant banking, investment banking or brokerage service transactions.

The Research analysts for this report certifies that all of the views expressed in this report accurately reflect his or her personal views about the subject company or companies and its or their securities, and no part of his or her compensation was, is or will be, directly or indirectly related to specific recommendations or views expressed in this report.

The research analysts for this report has not served as an officer, director or employee of the subject company PL or its research analysts have not engaged in market making activity for the subject company

Our sales people, traders, and other professionals or affiliates may provide oral or written market commentary or trading strategies to our clients that reflect opinions that are contrary to the opinions expressed herein, and our proprietary trading and investing businesses may make investment decisions that are inconsistent with the recommendations expressed herein. In reviewing these materials, you should be aware that any or all of the foregoing, among other things, may give rise to real or potential conflicts of interest.

PL and its associates, their directors and employees may (a) from time to time, have a long or short position in, and buy or sell the securities of the subject company or (b) be engaged in any other transaction involving such securities and earn brokerage or other compensation or act as a market maker in the financial instruments of the subject company or act as an advisor or lender/borrower to the subject company or may have any other potential conflict of interests with respect to any recommendation and other related information and opinions.