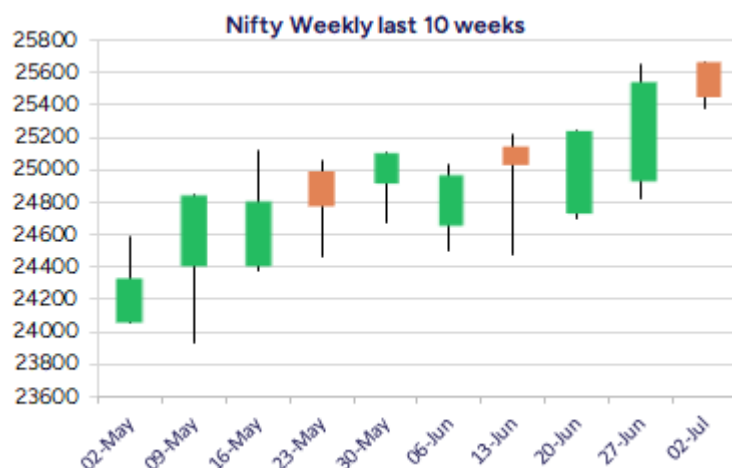
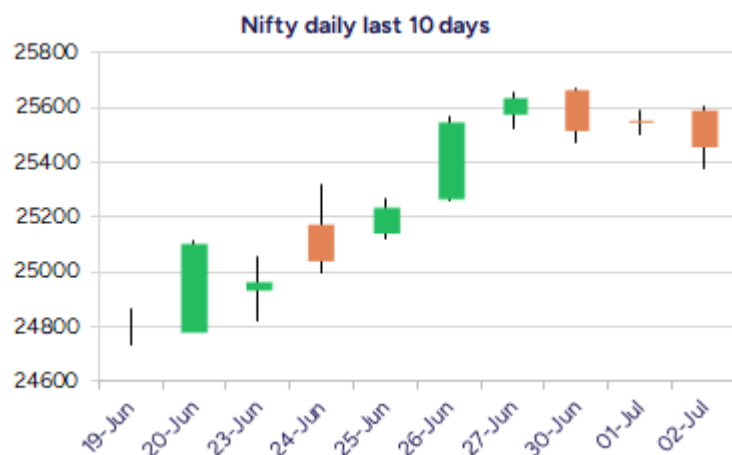


Date: 03rd July 2025

* Sensex 83409.69 - 287.60

* Nifty 25453.40 - 88.40

* Bank Nifty 56999.20 - 460.25



*Blue candle → Close rate > Open rate * Red candle → Close rate < Open rate

Market Preview

Nifty slips below 25500 zone

Nifty shed some of the gains from the peak level of 25650 zone slipping below the 25500 zone with some profit booking witnessed maintaining the overall bias intact. BankNifty succumbed to heavy profit booking sliding below the 57000 zone during the intraday session, with bias slightly affected. The market breadth was slightly on the weaker side with the advance decline indicating a ratio of 3:4 at close.

Market Forecast

Nifty daily range 25300-25600

Nifty index after resisting near the 25650 zone has witnessed a gradual slide with profit booking happening with the bias and sentiment still maintained strong, having the near-term support positioned near 25250-25300 zone. Once the index stabilises and indicate a revival, we can expect to carry on with the positive move for higher targets of 25700 and 26200 levels which is achievable.

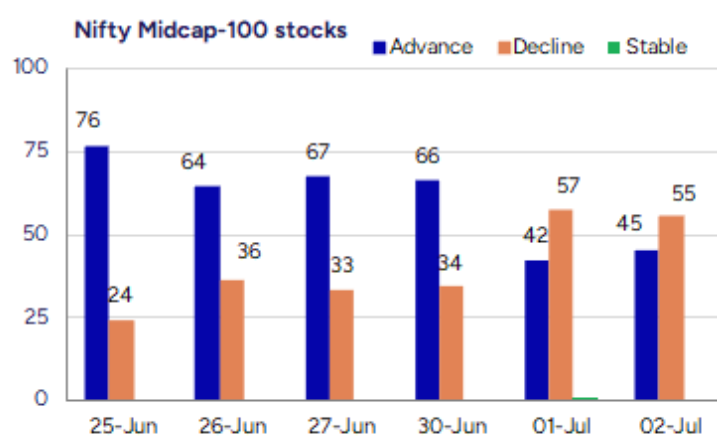
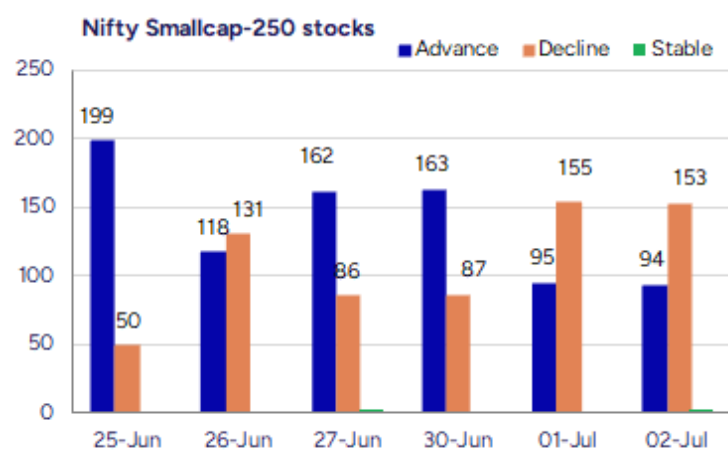
BankNifty, witnessed heavy profit booking after resisting near the 57600 zone, slipping down to close near the 57000 zone slightly weakening the bias but with the overall trend maintained intact one can expect the index to consolidate near the 56000 zone which is the near-term important support. On the upside, once a decisive breach above the resistance level of 57600 is breached, thereafter one can expect for fresh targets of 58500 and 60000 levels in the coming days.

The support for the day is seen at 25300 levels while the resistance is seen at 25600 levels. BankNifty would have the daily range of 56500-57600 levels.

Indices	Period	Closing	% Chng	Trend	Reversal	2 Sup	1 Sup	Pivot	1 Res	2 Res
Nifty	Daily	25453.40	-0.35%	-1	25536.80	25251	25352	25480	25581	25709
	Weekly	25637.80	2.09%	2	25312.05	24545	25091	25372	25919	26199
	Monthly	25517.05	3.10%	2	25312.05	24028	24772	25217	25962	26407
Bank Nifty	Daily	56999.20	-0.80%	-1	57438.45	56359	56679	57154	57474	57948
	Weekly	57443.90	2.12%	1	56982.40	55211	56327	56900	58017	58589
	Monthly	57312.75	2.80%	3	54910.25	54237	55775	56687	58226	59138
Sensex	Daily	83409.69	-0.34%	-1	83670.60	82714	83062	83498	83846	84283
	Weekly	84058.90	2.00%	2	83079.45	80602	82330	83209	84938	85817
	Monthly	83606.46	2.65%	2	81262.65	79027	81317	82703	84992	86378

Gainers - Losers (Nifty 500 Stocks)

Gainers				Losers			
Company Name	Last Price	% Gain	Volume	Company Name	Last Price	% Loss	Volume
Piccadily Agro	602.7	5	108477	Falcon Technopr	23.5	-19.38	122400
DELPHI WORLD	195.55	20	262092	Ganga Bath Fitt	32.6	-8.43	468000
U. Y. Fincorp	21.66	20	2009389	Sigachi Ind	42.67	-7.34	47251899
Gabriel India	982.15	16.54	2857432	Sigachi Ind	42.67	-7.34	47251899
Bombay Metrics	48.5	15.75	5600	Rajputana Bio	225	-6.58	28000
Digitide Solut	216.63	11.69	3617712	Jindal Worldwid	51.2	-6.57	7289369
Saakshi Medtech	195.9	10.99	149400	Innovana	571.5	-6.28	44158



Nifty Daily chart with RSI indicator



BankNifty Daily chart with RSI indicator



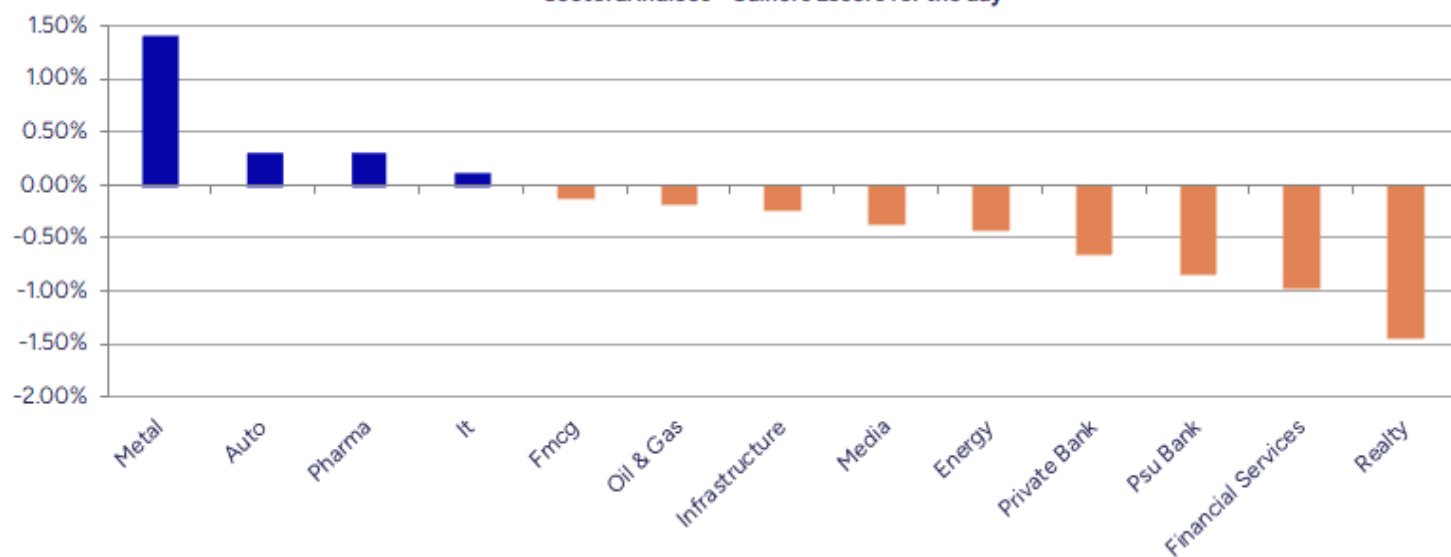
Breakouts - Cross above 200 DMA			
Company Name	LCP	Change %	200 DMA
Saakshi Medtech	195.9	7.19	182.76
Sai Silks	162.9	5.91	153.81
Arihant Capital	93.1	5.16	88.53
SMVD Poly Pack	14.15	4.58	13.53
Kajaria Ceramic	1122	4.38	1074.9
Flair Writing	278.4	4.34	266.82
Future Market	17.83	4.27	17.1
Heranba	371.8	3.81	358.14
Gujarat Gas	499.15	3.37	482.88
DELPHI WORLD	195.55	3.05	189.76
Kriti Ind	155.98	2.72	151.85
Heidelberg Cem	214.6	2.48	209.41
RSWM	177.6	2.22	173.74
Nureca	288	2.17	281.87
AYM Syntex	233.56	2.11	228.73
IZMO	394.5	1.96	386.93
Incredible Ind	42.27	1.64	41.59
Prism Johnson	160.18	1.41	157.96

* Stocks crossing above its Simple Moving Average (200DMA)

Breakdown - Cross below 200 DMA			
Company Name	LCP	Change %	200 DMA
Akiko Global	76	-4.49	79.57
Thirumalai Chem	280.6	-2.72	288.46
CG Power	665.6	-2.47	682.43
ADF Foods	263.9	-2.12	269.61
Coffee Day	35.57	-2.01	36.3
Embassy Develop	118.8	-1.78	120.95
Capital SFB	283.9	-1.70	288.82
Zodiac Clothing	111.02	-1.60	112.82
Zodiac Energy	477.2	-1.50	484.46
DB Corp	272	-1.44	275.98
20 Microns	228.4	-1.42	231.68
Cera Sanitary	6665	-1.32	6754.16
Sejal Glass	466	-1.28	472.06
Trident	30.72	-1.25	31.11
Fairchem Org.	981.1	-1.18	992.86
STL Global	15.5	-1.15	15.68
Ashima	29.47	-1.14	29.81
Sammaan Capital	136.1	-1.10	137.61

* Stocks crossing below its Simple Moving Average (200DMA)

Sectoral Indices - Gainers Losers for the day



Stocks witnessing a volume surge as compared to their 5 day average volume

Watch out for the stocks that have seen a huge spurt in its share price over the last three days

Volume Shockers - NSE					
Company name	LCP	% Chg	Volume	Avg Vol *	% Chg
Diamond Power	138.98	0.56	6327282	6800	92943
Tamil Telecom	17.44	9.96	1411299	10569	13253
United Polyfab	20.58	-1.63	847383	14703	5663
Bajaj Consumer	227.78	7.74	14140774	256741	5408
Jindal Worldwid	51.21	-6.55	7497069	138074	5330
Asahi India	830.55	3.01	3930185	72514	5320
Prime Focus	163.62	9.31	7624478	152269	4907
Kamdhenu	30.93	-1.81	34615210	717571	4724
Sigachi Ind	42.68	-7.32	47849849	1046438	4473
Sai Silks	164.11	7.41	17199185	411761	4077
Laxmi Goldorna	728.1	-1.11	42502	1094	3786
Jai Balaji Ind	121.71	-3.7	1862930	54390	3325
BITES	295.1	5.75	29009168	944440	2972
Kajaria Ceramic	1120.6	4.28	2101492	84513	2387
V-Mart Retail	821.15	-3.6	291522	11748	2382
KCK Industries	43.5	0.12	315000	13600	2216
Blue Dart	6910	0.93	231924	10058	2206
TVS Srichakra	3316.8	8.41	189963	8426	2154
Exxaro	9.7	4.75	1098807	51457	2035
Remsons Ind	135.24	-1.64	441425	21094	1993

* the Average Volume of last 5 days

Price Shockers - NSE				
Company name	LCP	Prv Close	% Chg	Volume
Tamil Telecom	17.44	11.02	58.26	1406099
Gabriel India	982.15	668.7	46.87	2857432
DELPHI WORLD	195.55	150.63	29.82	262092
Heranba	371.8	304.4	22.14	959857
U. Y. Fincorp	21.66	17.76	21.96	2009389
Euro India Fres	263.55	216.69	21.63	266641
Raymond	759.15	624.35	21.59	10784348
Best Agrolife	385.35	323.05	19.28	147724
Prime Focus	163.03	136.83	19.15	7304057
Century Extr	23.99	20.17	18.94	402679
Thaai Casting	119.3	102.1	16.85	194400
Patel Integrate	18.05	15.54	16.15	1302021
Swan Defence	228.57	197.46	15.76	311
Naci Industries	240.74	207.98	15.75	83202
BSL	158.44	136.88	15.75	19662
Sri Adhikari	1062.4	917.85	15.75	2020
IRIS Business S	335.45	289.85	15.73	80011
Aristo Bio-Tech	130.25	112.55	15.73	3200
Kavveri Defence	55.94	48.34	15.72	151555
Digjam	37.99	32.83	15.72	1893

* the % price rise of the last 3 days

Nifty 50 stocks - Summary Details											
Symbol	LTP	Chng	% Chng	Volume (lacs)	Turnover (crs.)	52w High	Diff with 52w H	52w Low	Diff with 52w L	365 days % chng	30 days % chng
NIFTY 50	25453.40	-88.40	-0.35%	3098.10	26680.35	26277.35	3.14%	21743.65	17.06%	3.20%	5.80%
ADANIENT	2629.00	7.20	0.27%	6.21	163.47	3258.00	19.31%	2025.00	29.83%	4.04%	-17.65%
ADANIPTS	1442.00	-5.00	-0.35%	12.19	176.38	1604.95	10.15%	995.65	44.83%	0.99%	-1.87%
APOLLOHOSP	7457.00	-39.00	-0.52%	9.11	681.28	7584.50	1.68%	6001.00	24.26%	8.95%	22.07%
ASIANPAINT	2426.30	56.80	2.40%	19.36	461.89	3394.90	28.53%	2124.75	14.19%	4.89%	-19.07%
AXISBANK	1175.00	1.70	0.14%	54.71	643.42	1339.65	12.29%	933.50	25.87%	-1.59%	-7.02%
BAJAJ-AUTO	8350.00	-49.00	-0.58%	2.68	223.58	12774.00	34.63%	7089.35	17.78%	-2.42%	-11.89%
BAJAJFINSV	2009.10	-44.70	-2.18%	12.05	242.86	2135.00	5.90%	1523.25	31.90%	1.80%	29.97%
BAJFINANCE	922.70	-13.95	-1.49%	93.94	867.95	978.80	5.73%	642.50	43.61%	-89.80%	-87.13%
BEL	427.70	-4.55	-1.05%	228.43	975.48	436.00	1.90%	240.25	78.02%	12.39%	40.50%
BHARTIARTL	2030.00	10.60	0.52%	65.13	1324.44	2045.80	0.77%	1408.45	44.13%	8.79%	38.89%
CIPLA	1495.40	-20.30	-1.34%	12.74	191.66	1702.05	12.14%	1335.00	12.01%	3.41%	2.47%
COALINDIA	386.90	-2.85	-0.73%	77.50	300.03	543.55	28.82%	349.25	10.78%	-1.90%	-17.91%
DRREDDY	1273.40	-3.40	-0.27%	20.27	257.39	1421.49	10.42%	1020.00	24.84%	2.05%	-79.90%
EICHERMOT	5721.50	6.00	0.10%	3.00	171.74	5906.50	3.13%	4508.75	26.90%	7.16%	23.30%
GRASIM	2848.30	0.20	0.01%	9.17	261.88	2896.00	1.65%	2276.95	25.09%	11.87%	4.46%
HCLTECH	1715.00	-3.30	-0.19%	20.69	356.26	2012.20	14.77%	1302.75	31.64%	4.99%	16.98%
HDFCBANK	1985.50	-26.60	-1.32%	94.39	1878.60	2027.10	2.05%	1588.05	25.03%	3.46%	18.00%
HDFCLIFE	789.10	-20.80	-2.57%	32.48	259.23	820.75	3.86%	584.30	35.05%	4.25%	34.81%
HEROMOTOCO	4238.00	12.00	0.28%	8.08	343.86	6246.25	32.15%	3344.00	26.73%	-1.93%	-24.58%
HINDALCO	698.70	4.40	0.63%	45.67	319.34	772.65	9.57%	546.45	27.86%	9.60%	0.65%
HINDUNILVR	2306.90	11.40	0.50%	11.28	259.52	3035.00	23.99%	2136.00	8.00%	-2.25%	-8.37%
ICICIBANK	1427.80	-4.20	-0.29%	133.72	1912.98	1471.60	2.98%	1153.00	23.83%	-0.95%	18.17%
INDUSINDBK	856.75	-22.35	-2.54%	101.83	872.53	1498.00	42.81%	606.00	41.38%	7.61%	-39.66%
INFY	1609.60	2.80	0.17%	86.53	1404.11	2006.45	19.78%	1307.00	23.15%	2.82%	1.01%
ITC	413.20	-1.90	-0.46%	159.91	661.32	528.50	21.82%	390.15	5.91%	-0.71%	-3.25%
JIOFIN	326.55	-3.05	-0.93%	133.85	437.66	363.00	10.04%	198.65	64.38%	14.98%	-6.58%
JSWSTEEL	1058.20	28.60	2.78%	31.67	333.77	1074.90	1.55%	854.15	23.89%	3.63%	9.08%
KOTAKBANK	2164.50	-19.10	-0.87%	18.77	408.83	2301.90	5.97%	1679.05	28.91%	5.25%	20.77%
LT	3593.80	-72.90	-1.99%	13.30	480.34	3963.50	9.33%	2965.30	21.20%	-0.23%	3.97%
M&M	3164.80	-11.30	-0.36%	15.59	494.66	3270.95	3.25%	2425.00	30.51%	6.70%	10.44%
MARUTI	12615.00	173.00	1.39%	6.10	764.86	13680.00	7.79%	10725.00	17.62%	1.00%	2.75%
NESTLEIND	2388.00	-22.10	-0.92%	7.38	176.20	2778.00	14.04%	2110.00	13.18%	0.58%	-6.15%
NTPC	333.80	1.20	0.36%	113.27	377.70	448.45	25.57%	292.80	14.00%	-0.39%	-10.05%
ONGC	241.10	-2.27	-0.93%	104.19	251.91	345.00	30.12%	205.00	17.61%	1.66%	-10.84%
POWERGRID	294.90	-2.65	-0.89%	108.26	320.03	366.25	19.48%	247.30	19.25%	2.69%	-9.72%
RELIANCE	1517.10	-11.30	-0.74%	63.60	965.70	1608.80	5.70%	1114.85	36.08%	7.57%	-51.02%
SBILIFE	1853.10	-9.40	-0.50%	10.73	199.67	1936.00	4.28%	1372.55	35.01%	2.78%	24.01%
SBIN	812.70	-7.60	-0.93%	66.60	542.69	899.00	9.60%	680.00	19.51%	0.98%	-2.57%
SHRIRAMFIN	676.60	-19.85	-2.85%	32.88	224.13	730.45	7.37%	493.35	37.14%	8.93%	-76.18%
SUNPHARMA	1678.10	10.90	0.65%	16.11	270.02	1960.35	14.40%	1498.30	12.00%	-0.62%	9.68%
TATACONSUM	1098.00	2.40	0.22%	12.31	134.31	1250.10	12.17%	882.90	24.36%	-0.97%	0.10%
TATAMOTORS	687.80	4.00	0.58%	80.34	552.38	1179.00	41.66%	535.75	28.38%	-4.96%	-31.76%
TATASTEEL	165.95	5.89	3.68%	633.11	1039.38	178.19	6.87%	122.62	35.34%	-0.60%	-8.05%
TCS	3423.50	-6.20	-0.18%	30.90	1064.80	4592.25	25.45%	3056.05	12.02%	-0.97%	-13.79%
TECHM	1677.00	5.80	0.35%	19.31	324.36	1807.70	7.23%	1209.40	38.66%	6.18%	13.52%
TITAN	3707.00	6.50	0.18%	5.84	216.25	3867.00	4.14%	2925.00	26.74%	4.09%	7.84%
TRENT	6221.00	77.00	1.25%	11.59	715.44	8345.00	25.45%	4488.00	38.61%	8.87%	11.39%
ULTRACEMCO	12410.00	200.00	1.64%	4.46	553.14	12527.00	0.93%	10047.85	23.51%	8.92%	2.56%
WIPRO	267.15	2.60	0.98%	87.50	233.18	324.60	17.70%	228.00	17.17%	5.96%	-49.83%
ETERNAL	260.00	-1.00	-0.38%	149.40	387.73	304.70	14.67%	194.56	33.63%	9.52%	#VALUE!

Disclaimer / Disclosures

ANALYST CERTIFICATION

I, Mrs. Vaishali Parekh B.com, Research Analyst, author and the name subscribed to this report, hereby certify that all of the views expressed in this research report accurately reflect our views about the subject issuer(s) or securities. We also certify that no part of our compensation was, is, or will be directly or indirectly related to the specific recommendation(s) or view(s) in this report.

Terms & conditions and other disclosures:

Prabhudas Lilladher Pvt. Ltd, Mumbai, India (hereinafter referred to as "PL") is engaged in the business of Stock Broking, Portfolio Manager, Depository Participant and distribution for third party financial products. PL is a subsidiary of Prabhudas Lilladher Advisory Services Pvt Ltd. which has its various subsidiaries engaged in business of commodity broking, investment banking, financial services (margin funding) and distribution of third party financial/other products, details in respect of which are available at www.plindia.com

This document has been prepared by the Research Division of PL and is meant for use by the recipient only as information and is not for circulation. This document is not to be reported or copied or made available to others without prior permission of PL. It should not be considered or taken as an offer to sell or a solicitation to buy or sell any security.

The information contained in this report has been obtained from sources that are considered to be reliable. However, PL has not independently verified the accuracy or completeness of the same. Neither PL nor any of its affiliates, its directors or its employees accepts any responsibility of whatsoever nature for the information, statements and opinion given, made available or expressed herein or for any omission therein.

Recipients of this report should be aware that past performance is not necessarily a guide to future performance and value of investments can go down as well. The suitability or otherwise of any investments will depend upon the recipient's particular circumstances and, in case of doubt, advice should be sought from an independent expert/advisor.

Either PL or its affiliates or its directors or its employees or its representatives or its clients or their relatives may have position(s), make market, act as principal or engage in transactions of securities of companies referred to in this report and they may have used the research material prior to publication.

PL may from time to time solicit or perform investment banking or other services for any company mentioned in this document.

PL is registered as Research Analyst under Securities and Exchange Board of India (Research Analysts) Regulations, 2014 PL submits that no material disciplinary action has been taken on us by any Regulatory Authority impacting Equity Research Analysis activities.

PL or its research analysts or its associates or his relatives do not have any financial interest in the subject company.

PL or its research analysts or its associates or his relatives do not have actual/beneficial ownership of one per cent or more securities of the subject company at the end of the month immediately preceding the date of publication of the research report.

PL or its research analysts or its associates or his relatives do not have any material conflict of interest at the time of publication of the research report.

PL or its associates might have received compensation from the subject company in the past twelve months.

PL or its associates might have managed or co-managed public offering of securities for the subject company in the past twelve months or mandated by the subject company for any other assignment in the past twelve months.

PL or its associates might have received any compensation for investment banking or merchant banking or brokerage services from the subject company in the past twelve months.

PL or its associates might have received any compensation for products or services other than investment banking or merchant banking or brokerage services from the subject company in the past twelve months PL or its associates might have received any compensation or other benefits from the subject company or third party in connection with the research report.

PL encourages independence in research report preparation and strives to minimize conflict in preparation of research report. PL or its analysts did not receive any compensation or other benefits from the subject Company or third party in connection with the preparation of the research report. PL or its Research Analysts do not have any material conflict of interest at the time of publication of this report.

It is confirmed that Mrs.Vaishali Parekh B.com, Research Analyst of this report has not received any compensation from the companies mentioned in the report in the preceding twelve months compensation of our Research Analysts is not based on any specific merchant banking, investment banking or brokerage service transactions.

The Research analysts for this report certifies that all of the views expressed in this report accurately reflect his or her personal views about the subject company or companies and its or their securities, and no part of his or her compensation was, is or will be, directly or indirectly related to specific recommendations or views expressed in this report.

The research analysts for this report has not served as an officer, director or employee of the subject company PL or its research analysts have not engaged in market making activity for the subject company

Our sales people, traders, and other professionals or affiliates may provide oral or written market commentary or trading strategies to our clients that reflect opinions that are contrary to the opinions expressed herein, and our proprietary trading and investing businesses may make investment decisions that are inconsistent with the recommendations expressed herein. In reviewing these materials, you should be aware that any or all of the foregoing, among other things, may give rise to real or potential conflicts of interest.

PL and its associates, their directors and employees may (a) from time to time, have a long or short position in, and buy or sell the securities of the subject company or (b) be engaged in any other transaction involving such securities and earn brokerage or other compensation or act as a market maker in the financial instruments of the subject company or act as an advisor or lender/borrower to the subject company or may have any other potential conflict of interests with respect to any recommendation and other related information and opinions.