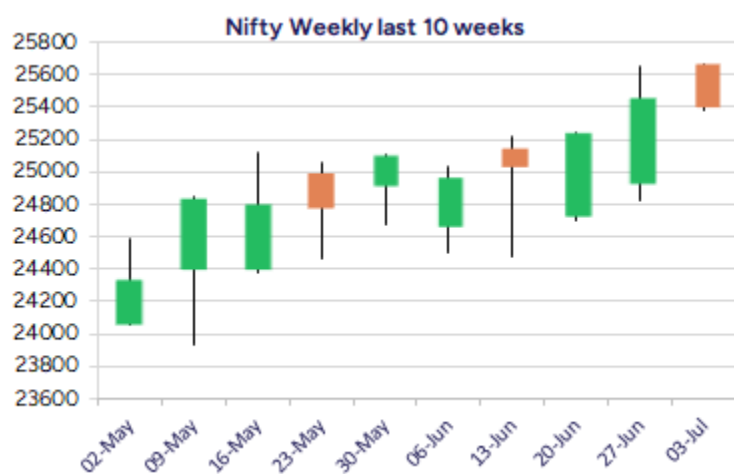
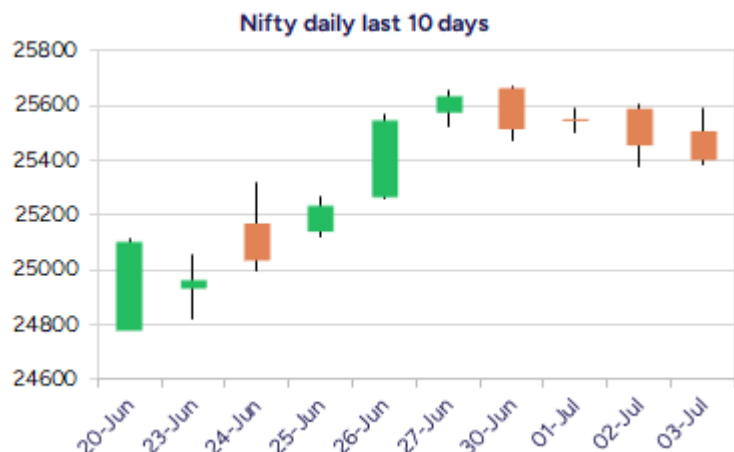


Date: 04<sup>th</sup> July 2025

\* Sensex 83239.47 -170.22

\* Nifty 25405.30 -48.10

\* Bank Nifty 56791.95 -207.25



\*Blue candle → Close rate > Open rate \* Red candle → Close rate < Open rate

## Market Preview

### Nifty slips; ends near 25400 zone

Nifty witnessed a slightly volatile session closing near the 25400 zone slipping from the peak zone of 25670 level in the last 4 sessions with bias and sentiment still maintained intact. BankNifty continue to shed gains closing near the 56800 zone and would need to sustain around the 56000 level which is the important support as of now. The market breadth was almost flat slightly on the weaker side with the advance decline indicating a neutral ratio at close.

## Market Forecast

### Nifty daily range 25300-25600

Nifty index continue to drag after the initial positive opening session finding resistance near the 25570 zone and with profit booking seen ended the session near 25400 level with bias and sentiment still sustained. The index has the important near-term support positioned near 25250-25300 zone, as mentioned earlier and once the index stabilises and sustain the zone, we can expect for a revival and carry on with the positive move for higher targets of 25700 and 26200 levels which is achievable.

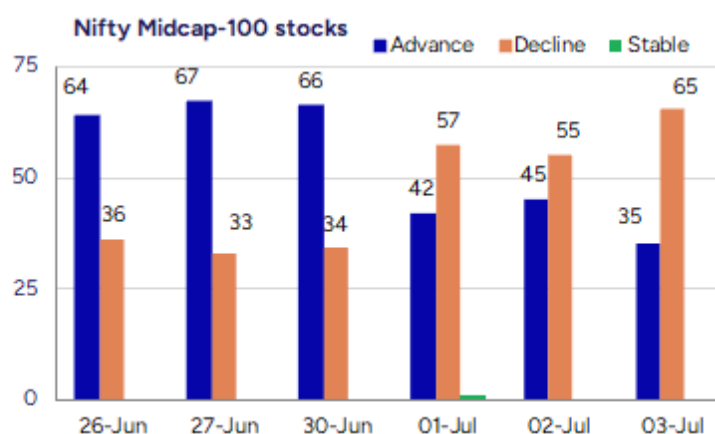
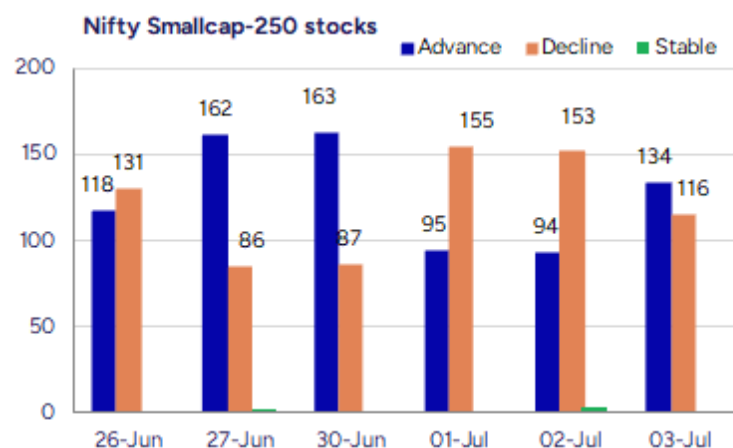
BankNifty, witnessed another weak session closing in the red and closed near the 56800-zone having the important support near the 56000 level, as mentioned earlier, which needs to be sustained as of now. The index has resisted near the upper band of the channel at 57500 zone and currently with a slightly weak bias would need a revival and once a decisive breach above the resistance level of 57600 is breached, thereafter one can expect for fresh targets of 58500 and 60000 levels in the coming days.

The support for the day is seen at 25300 levels while the resistance is seen at 25600 levels. BankNifty would have the daily range of 56300-57500 levels.

Indices	Period	Closing	% Chng	Trend	Reversal	2 Sup	1 Sup	Pivot	1 Res	2 Res
Nifty	Daily	25405.30	-0.19%	-2	25581.15	25256	25331	25459	25534	25662
	Weekly	25637.80	2.09%	2	25312.05	24545	25091	25372	25919	26199
	Monthly	25517.05	3.10%	2	25312.05	24028	24772	25217	25962	26407
Bank Nifty	Daily	56791.95	-0.36%	-2	57489.05	56487	56640	56916	57069	57346
	Weekly	57443.90	2.12%	1	56982.40	55211	56327	56900	58017	58589
	Monthly	57312.75	2.80%	3	54910.25	54237	55775	56687	58226	59138
Sensex	Daily	83239.47	-0.20%	-2	83818.90	82762	83001	83425	83664	84089
	Weekly	84058.90	2.00%	2	83079.45	80602	82330	83209	84938	85817
	Monthly	83606.46	2.65%	2	81262.65	79027	81317	82703	84992	86378

**Gainers - Losers ( Nifty 500 Stocks )**

Gainers				Losers			
Company Name	Last Price	% Gain	Volume	Company Name	Last Price	% Loss	Volume
DELPHI WORLD	231.59	18.43	968582	Baazar Style	297.15	-7.65	1807387
DCM Shriram	1425.5	15.15	8327487	Sahana Systems	1353.75	-6.05	62875
Saksoft	225.87	13.08	18889594	U. Y. Fincorp	20.42	-5.72	1922276
Auro Impex	55.45	11.68	78400	Arham Tech	90.15	-5.3	17000
LLOYDS ENTER	92.4	10.66	11923159	QMS Medical	79.15	-5.21	41000
Quality Power	737.3	10.12	3048012	VST	299.45	-5.15	795919
Auto Stampings	627.9	10.02	1350370	Archies	22.31	-5.02	55965



## Nifty Daily chart with RSI indicator



## BankNifty Daily chart with RSI indicator



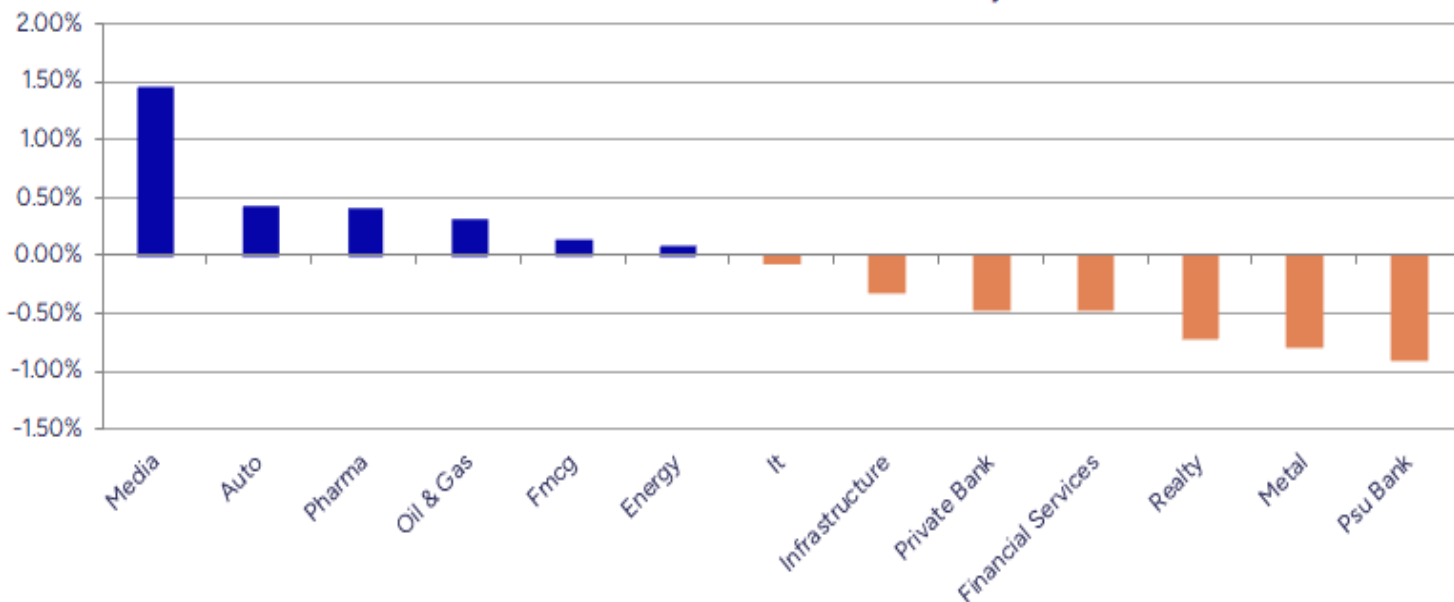
Breakouts - Cross above 200 DMA			
Company Name	LCP	Change %	200 DMA
Saksoft	225.87	11.66	202.28
Auto Stampings	627.9	5.69	594.09
Kapston Service	253.47	4.74	242.01
Global Educatio	66.5	3.33	64.36
Latent View	446.7	3.29	432.49
Ador Welding	1101.7	3.02	1069.36
Honeywell Autom	41200	2.82	40071.58
Narmada Agrobias	18.3	2.75	17.81
Somany Ceramics	576.85	2.50	562.78
GVP Infotech	11.12	2.30	10.87
KEI Industries	3840.7	1.92	3768.22
Alembic Pharma	1007.4	1.60	991.49
Mayur Uniquoter	565.25	1.60	556.37
Man Infra	187.71	1.50	184.94
Ducol Organics	123.9	1.34	122.26
Umiya Buildcon	81.33	1.18	80.38
Ingersoll Rand	3951.6	1.00	3912.49
Kirloskar Ind	4132.9	0.91	4095.58

\* Stocks crossing above its Simple Moving Average (200DMA)

Breakdown - Cross below 200 DMA			
Company Name	LCP	Change %	200 DMA
VST	299.45	-5.09	315.52
Hb Stockhol	99.89	-3.46	103.47
Sylvan Plyboard	82.75	-2.93	85.25
Archies	22.31	-2.70	22.93
Aartech Solonic	65.74	-1.75	66.91
Abhishek	67	-1.54	68.05
Focus Lighting	106.49	-1.41	108.01
Damodar Ind	38.03	-1.37	38.56
Krebs Biochem	85.49	-1.37	86.68
Avonmore Cap	18.83	-1.31	19.08
ICICI Prudentia	639.9	-1.23	647.84
Bharat Gears	88.84	-1.23	89.95
Airo Lam	112.24	-1.16	113.56
STC India	142.56	-1.05	144.08
Shree Digvijay	80.58	-0.84	81.26
Baazar Style Re	297.15	-0.80	299.56
TVS Srichakra	3263.4	-0.80	3289.84
Shanthi Gears	504.85	-0.71	508.46

\* Stocks crossing below its Simple Moving Average (200DMA)

Sectoral Indices - Gainers Losers for the day



Stocks witnessing a volume surge as compared to their 5 day average volume

Watch out for the stocks that have seen a huge spurt in its share price over the last three days

Volume Shockers - NSE					
Company name	LCP	% Chg	Volume	Avg Vol *	% Chg
Diamond Power	139	0.01	6800	62462	4254450
United Polyfab	21.11	2.58	14703	18254	2698559
Jai Balaji Ind	128.7	5.74	54390	8930	4911298
Saksoft	225.87	13.08	255223	7301	18889594
DCM Shriram	1425.5	15.15	133309	6147	8327487
Sadhana Nitro	7.64	-5.09	466469	5409	25699251
Tamil Telecom	19.18	9.98	10569	5101	549701
KCK Industries	43.15	-0.8	13600	4551	632500
DELPHI WORLD	231.59	18.43	22013	4300	968582
Laxmi Goldorna	727.1	-0.14	1094	3818	42851
Falcon Technopr	23.95	-0.21	11280	3730	432000
Gallantt Ispat	554.7	5.87	33914	3096	1083836
Sigachi Ind	41.88	-1.87	1046438	3043	32891034
Asahi India	835.1	0.55	72514	2932	2198311
SML Isuzu	2470.4	5.8	12295	2756	351088
Thomas Scott	401.3	5	4062	2660	112104
Privi Special	2520.3	6.26	26329	2484	680217
AKG Exim	14.02	0.29	193656	2279	4606993
Balaxi Pharma	48.87	-0.41	38449	2128	856755
Mukand	154.06	6.74	220014	2081	4799302

\* the Average Volume of last 5 days

Price Shockers - NSE					
Company name	LCP	Prv Close	% Chg	Volume	
Tamil Telecom	19.18	13.22	45.08	549701	
DELPHI WORLD	231.59	160.45	44.34	968582	
Gabriel India	949.5	702.3	35.2	2437426	
Auro Impex	55.45	45.7	21.33	78400	
Sumeet Ind	95.41	78.68	21.26	10037	
Zota Health Car	1146.95	974.5	17.7	235905	
SML Isuzu	2470.4	2110.3	17.06	351088	
Nacl Industries	252.77	218.37	15.75	261377	
BSL	166.36	143.72	15.75	14666	
Swan Defence	239.99	207.33	15.75	276	
Sri Adhikari	1115.5	963.7	15.75	1545	
Aristo Bio-Tech	136.75	118.15	15.74	8000	
IRIS Business S	352.2	304.3	15.74	12345	
Sindhu Trade	29.95	25.88	15.73	14957884	
Digjam	39.88	34.47	15.69	589	
Pattech Fitwell	102.65	88.75	15.66	45000	
DCM Shriram	1425.5	1232.8	15.63	8327487	
Osia Hyper Reta	15.24	13.18	15.63	1118403	
Lokesh Machines	201.4	174.35	15.51	20367	
Future Market	18.72	16.21	15.48	82882	

\* the % price rise of the last 3 days



Nifty 50 stocks - Summary Details											
Symbol	LTP	Chng	% Chng	Volume (lacs)	Turnover (crs.)	52w High	Diff with 52w H	52w Low	Diff with 52w L	365 days % chng	30 days % chng
NIFTY 50	25405.30	-48.10	-0.19%	2934.10	24530.33	26277.35	3.32%	21743.65	16.84%	2.98%	5.51%
ADANIENT	2608.00	-22.20	-0.84%	5.03	131.61	3258.00	19.95%	2025.00	28.79%	4.42%	-16.59%
ADANIPTS	1429.00	-14.90	-1.03%	9.78	140.52	1604.95	10.96%	995.65	43.52%	-1.64%	-2.10%
APOLLOHOSP	7572.50	131.50	1.77%	8.95	675.22	7600.50	0.37%	6001.00	26.19%	7.60%	22.03%
ASIANPAINT	2430.50	11.10	0.46%	15.47	378.27	3394.90	28.41%	2124.75	14.39%	6.74%	-17.30%
AXISBANK	1169.80	-5.50	-0.47%	62.37	731.91	1339.65	12.68%	933.50	25.31%	-1.60%	-6.23%
BAJAJ-AUTO	8392.50	36.00	0.43%	1.76	147.72	12774.00	34.30%	7089.35	18.38%	-1.84%	-11.11%
BAJAJFINSV	1979.80	-28.10	-1.40%	11.34	225.06	2135.00	7.27%	1523.25	29.97%	-1.04%	27.10%
BAJFINANCE	912.50	-10.50	-1.14%	76.06	693.50	978.80	6.77%	642.50	42.02%	-89.88%	-87.12%
BEL	426.50	-0.45	-0.11%	134.96	576.70	436.00	2.18%	240.25	77.52%	10.18%	39.48%
BHARTIARTL	2019.00	-14.30	-0.70%	55.59	1128.39	2045.80	1.31%	1408.45	43.35%	9.67%	43.30%
CIPLA	1507.50	9.90	0.66%	8.70	131.18	1702.05	11.43%	1335.00	12.92%	1.86%	0.60%
COALINDIA	386.55	-0.35	-0.09%	38.51	148.97	543.55	28.88%	349.25	10.68%	-3.20%	-19.24%
DRREDDY	1295.00	24.20	1.90%	19.19	246.24	1421.49	8.90%	1020.00	26.96%	1.85%	-80.05%
EICHERMOT	5706.00	-16.50	-0.29%	3.36	192.43	5906.50	3.39%	4508.75	26.55%	6.74%	23.71%
GRASIM	2814.40	-35.40	-1.24%	3.93	111.33	2896.00	2.82%	2276.95	23.60%	12.90%	3.90%
HCLTECH	1710.00	-8.60	-0.50%	18.39	315.97	2012.20	15.02%	1302.75	31.26%	5.34%	16.06%
HDFCBANK	1985.90	-0.10	-0.01%	84.30	1680.26	2027.10	2.03%	1588.05	25.05%	2.79%	14.76%
HDFCLIFE	783.90	-5.80	-0.73%	34.43	270.02	820.75	4.49%	584.30	34.16%	3.00%	33.89%
HEROMOTOCO	4318.00	74.30	1.75%	6.51	280.30	6246.25	30.87%	3344.00	29.13%	0.27%	-23.77%
HINDALCO	692.35	-6.00	-0.86%	42.15	295.19	772.65	10.39%	546.45	26.70%	10.66%	0.52%
HINDUNILVR	2314.80	7.70	0.33%	10.60	245.54	3035.00	23.73%	2136.00	8.37%	-2.72%	-7.16%
ICICIBANK	1427.00	-0.80	-0.06%	101.78	1455.37	1471.60	3.03%	1153.00	23.76%	-1.56%	19.92%
INDUSINDBK	861.95	4.30	0.50%	38.55	331.51	1498.00	42.46%	606.00	42.24%	5.53%	-40.00%
INFY	1616.90	6.40	0.40%	52.60	853.28	2006.45	19.41%	1307.00	23.71%	3.65%	-0.65%
ITC	413.90	0.95	0.23%	141.82	586.52	528.50	21.68%	390.15	6.09%	-1.51%	-2.95%
JIOFIN	324.90	-1.80	-0.55%	114.96	374.64	363.00	10.50%	198.65	63.55%	14.05%	-6.92%
JSWSTEEL	1046.50	-13.40	-1.26%	17.04	179.61	1074.90	2.64%	854.15	22.52%	8.29%	12.97%
KOTAKBANK	2125.00	-44.10	-2.03%	46.67	996.52	2301.90	7.68%	1679.05	26.56%	5.11%	22.58%
LT	3581.40	-15.40	-0.43%	12.29	441.79	3963.50	9.64%	2965.30	20.78%	-2.25%	-0.82%
M&M	3175.60	10.40	0.33%	21.03	672.23	3270.95	2.92%	2425.00	30.95%	4.60%	10.47%
MARUTI	12750.00	128.00	1.01%	6.06	772.73	13680.00	6.80%	10725.00	18.88%	2.70%	4.81%
NESTLEIND	2388.00	-	#VALUE!	6.32	151.34	2778.00	14.04%	2110.00	13.18%	-0.76%	-6.15%
NTPC	335.10	1.35	0.40%	157.86	526.26	448.45	25.28%	292.80	14.45%	0.36%	-9.89%
ONGC	243.95	2.88	1.19%	138.90	339.62	345.00	29.29%	205.00	19.00%	1.16%	-12.29%
POWERGRID	293.70	-1.15	-0.39%	103.73	305.58	366.25	19.81%	247.30	18.76%	0.61%	-10.87%
RELIANCE	1515.00	-3.80	-0.25%	112.83	1715.62	1608.80	5.83%	1114.85	35.89%	7.43%	-51.48%
SBILIFE	1803.60	-53.20	-2.87%	9.17	166.95	1936.00	6.84%	1372.55	31.41%	3.01%	24.21%
SBIN	807.00	-5.90	-0.73%	70.19	568.41	899.00	10.23%	680.00	18.68%	-0.09%	-1.60%
SHRIRAMFIN	675.20	-1.70	-0.25%	60.14	407.73	730.45	7.56%	493.35	36.86%	5.35%	-76.04%
SUNPHARMA	1676.40	-1.10	-0.07%	15.54	261.53	1960.35	14.48%	1498.30	11.89%	0.17%	10.07%
TATACONSUM	1090.00	-5.80	-0.53%	7.30	79.91	1250.10	12.81%	882.90	23.46%	-2.20%	-0.83%
TATAMOTORS	690.30	1.75	0.25%	96.67	669.73	1179.00	41.45%	535.75	28.85%	-3.24%	-29.83%
TATASTEEL	165.55	-0.33	-0.20%	605.69	1011.31	178.19	7.09%	122.62	35.01%	4.30%	-4.96%
TCS	3400.00	-23.30	-0.68%	25.32	864.46	4592.25	25.96%	3056.05	11.25%	-0.77%	-14.79%
TECHM	1675.00	-2.10	-0.13%	17.13	287.73	1807.70	7.34%	1209.40	38.50%	8.26%	13.92%
TITAN	3684.00	-24.00	-0.65%	5.29	195.11	3867.00	4.73%	2925.00	25.95%	5.18%	9.07%
TRENT	6180.00	-42.50	-0.68%	7.51	465.14	8345.00	25.94%	4488.00	37.70%	10.69%	12.40%
ULTRACEMCO	12395.00	-41.00	-0.33%	2.76	343.91	12575.00	1.43%	10047.85	23.36%	11.09%	4.91%
WIPRO	267.20	0.20	0.07%	93.58	251.47	324.60	17.68%	228.00	17.19%	7.80%	-50.39%
ETERNAL	260.60	0.85	0.33%	194.03	508.01	304.70	14.47%	194.80	33.78%	7.69%	#VALUE!

## Disclaimer / Disclosures

### ANALYST CERTIFICATION

I, Mrs. Vaishali Parekh B.com, Research Analyst, author and the name subscribed to this report, hereby certify that all of the views expressed in this research report accurately reflect our views about the subject issuer(s) or securities. We also certify that no part of our compensation was, is, or will be directly or indirectly related to the specific recommendation(s) or view(s) in this report.

Terms & conditions and other disclosures:

Prabhudas Lilladher Pvt. Ltd, Mumbai, India (hereinafter referred to as "PL") is engaged in the business of Stock Broking, Portfolio Manager, Depository Participant and distribution for third party financial products. PL is a subsidiary of Prabhudas Lilladher Advisory Services Pvt Ltd. which has its various subsidiaries engaged in business of commodity broking, investment banking, financial services (margin funding) and distribution of third party financial/other products, details in respect of which are available at [www.plindia.com](http://www.plindia.com)

This document has been prepared by the Research Division of PL and is meant for use by the recipient only as information and is not for circulation. This document is not to be reported or copied or made available to others without prior permission of PL. It should not be considered or taken as an offer to sell or a solicitation to buy or sell any security.

The information contained in this report has been obtained from sources that are considered to be reliable. However, PL has not independently verified the accuracy or completeness of the same. Neither PL nor any of its affiliates, its directors or its employees accepts any responsibility of whatsoever nature for the information, statements and opinion given, made available or expressed herein or for any omission therein.

Recipients of this report should be aware that past performance is not necessarily a guide to future performance and value of investments can go down as well. The suitability or otherwise of any investments will depend upon the recipient's particular circumstances and, in case of doubt, advice should be sought from an independent expert/advisor.

Either PL or its affiliates or its directors or its employees or its representatives or its clients or their relatives may have position(s), make market, act as principal or engage in transactions of securities of companies referred to in this report and they may have used the research material prior to publication.

PL may from time to time solicit or perform investment banking or other services for any company mentioned in this document.

PL is registered as Research Analyst under Securities and Exchange Board of India (Research Analysts) Regulations, 2014 PL submits that no material disciplinary action has been taken on us by any Regulatory Authority impacting Equity Research Analysis activities.

PL or its research analysts or its associates or his relatives do not have any financial interest in the subject company.

PL or its research analysts or its associates or his relatives do not have actual/beneficial ownership of one per cent or more securities of the subject company at the end of the month immediately preceding the date of publication of the research report.

PL or its research analysts or its associates or his relatives do not have any material conflict of interest at the time of publication of the research report.

PL or its associates might have received compensation from the subject company in the past twelve months.

PL or its associates might have managed or co-managed public offering of securities for the subject company in the past twelve months or mandated by the subject company for any other assignment in the past twelve months.

PL or its associates might have received any compensation for investment banking or merchant banking or brokerage services from the subject company in the past twelve months.

PL or its associates might have received any compensation for products or services other than investment banking or merchant banking or brokerage services from the subject company in the past twelve months PL or its associates might have received any compensation or other benefits from the subject company or third party in connection with the research report.

PL encourages independence in research report preparation and strives to minimize conflict in preparation of research report. PL or its analysts did not receive any compensation or other benefits from the subject Company or third party in connection with the preparation of the research report. PL or its Research Analysts do not have any material conflict of interest at the time of publication of this report.

It is confirmed that Mrs.Vaishali Parekh B.com, Research Analyst of this report has not received any compensation from the companies mentioned in the report in the preceding twelve months compensation of our Research Analysts is not based on any specific merchant banking, investment banking or brokerage service transactions.

The Research analysts for this report certifies that all of the views expressed in this report accurately reflect his or her personal views about the subject company or companies and its or their securities, and no part of his or her compensation was, is or will be, directly or indirectly related to specific recommendations or views expressed in this report.

The research analysts for this report has not served as an officer, director or employee of the subject company PL or its research analysts have not engaged in market making activity for the subject company

Our sales people, traders, and other professionals or affiliates may provide oral or written market commentary or trading strategies to our clients that reflect opinions that are contrary to the opinions expressed herein, and our proprietary trading and investing businesses may make investment decisions that are inconsistent with the recommendations expressed herein. In reviewing these materials, you should be aware that any or all of the foregoing, among other things, may give rise to real or potential conflicts of interest.

PL and its associates, their directors and employees may (a) from time to time, have a long or short position in, and buy or sell the securities of the subject company or (b) be engaged in any other transaction involving such securities and earn brokerage or other compensation or act as a market maker in the financial instruments of the subject company or act as an advisor or lender/borrower to the subject company or may have any other potential conflict of interests with respect to any recommendation and other related information and opinions.