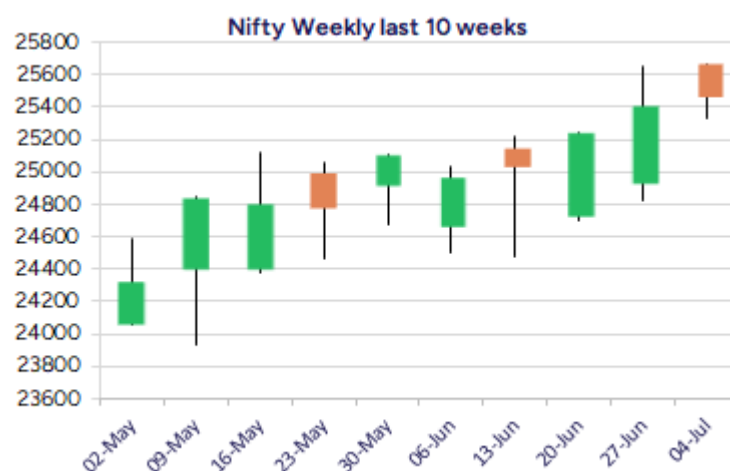
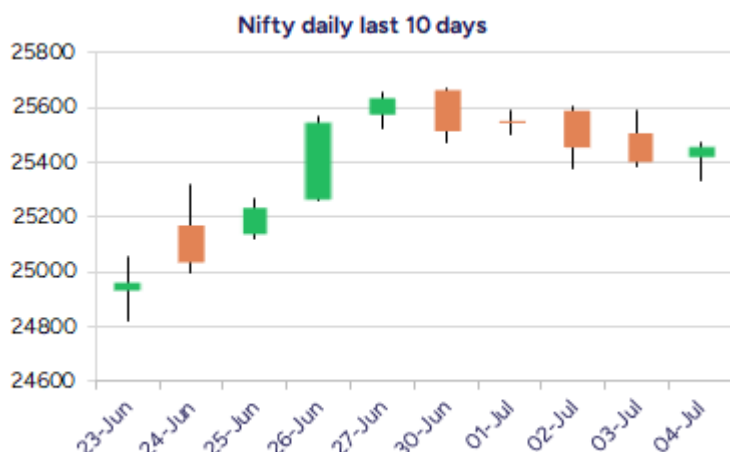


Date: 07th July 2025

* Sensex 83432.89 + 193.42

* Nifty 25461.00 + 55.70

* Bank Nifty 57031.90 + 239.95



*Blue candle → Close rate > Open rate * Red candle → Close rate < Open rate

Market Preview

Nifty indicates a Hammer pattern on daily chart

Nifty after a weak sluggish opening witnessed a significant turnaround in the second half to end in the green near 25450 zone with bias much improved. BankNifty ended on a positive note closing near the 57000 zone with a decent pullback witnessed to improve the bias and sentiment. The market breadth was slightly on the positive side with the advance decline indicating a ratio of 4:3 at close.

Market Forecast

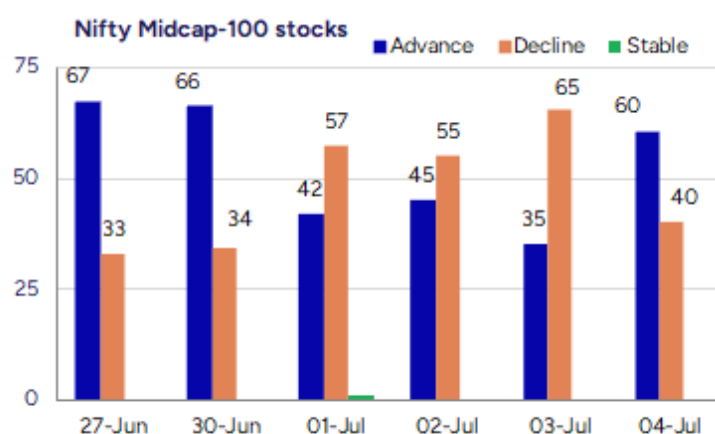
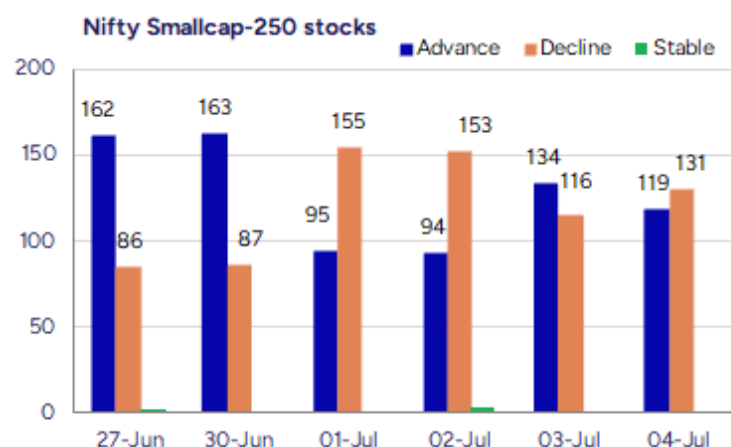
Nifty daily range 25300-25600

Nifty index amid the volatility witnessed a pullback in the later part of the session from near the 25330 zone to end in the green near 25450 level with bias showing signs of improvement and can expect for further upward move in the coming sessions. We continue with our stance, with the index having the important near-term support positioned near 25250-25300 zone, as mentioned earlier and on the upside, we can expect for a revival and carry on with the positive move for higher targets of 25700 and 26200 levels which is achievable. BankNifty, during the intraday session witnessed a strong pullback from near the 56600 zone and ended near the 57000 level with bias improved and anticipate for further rise in the coming sessions with overall trend maintained strong. The index continue to have the 56000 zone as the important support, as mentioned earlier, which needs to be sustained as of now, and once a decisive breach above the resistance level of 57600 is breached, thereafter one can expect for fresh targets of 58500 and 60000 levels in the coming days. The support for the day is seen at 25300 levels while the resistance is seen at 25600 levels. BankNifty would have the daily range of 56500-57600 levels.

Indices	Period	Closing	% Chng	Trend	Reversal	2 Sup	1 Sup	Pivot	1 Res	2 Res
Nifty	Daily	25461.00	0.22%	-3	25573.20	25282	25372	25421	25510	25560
	Weekly	25461.00	-0.69%	3	25328.50	25158	25310	25486	25637	25814
	Monthly	25517.05	3.10%	2	25312.05	24028	24772	25217	25962	26407
Bank Nifty	Daily	57031.90	0.42%	-3	57431.10	56459	56745	56910	57197	57362
	Weekly	57031.90	-0.72%	2	57012.35	56111	56571	57086	57546	58061
	Monthly	57312.75	2.80%	3	54910.25	54237	55775	56687	58226	59138
Sensex	Daily	83432.89	0.23%	-3	83793.55	82847	83140	83309	83602	83771
	Weekly	83432.89	-0.74%	3	83092.35	82443	82938	83511	84006	84580
	Monthly	83606.46	2.65%	2	81262.65	79027	81317	82703	84992	86378

Gainers - Losers (Nifty 500 Stocks)

Gainers				Losers			
Company Name	Last Price	% Gain	Volume	Company Name	Last Price	% Loss	Volume
Mazda	290.54	20	1325696	Dreamfolks Ser.	189.7	-12.81	4841826
PC Jeweller	16.82	19.97	436148895	Trent	5487	-11.37	7516432
Sindhu Trade	35.77	19.43	43977308	Nuvama Wealth	7310	-10.59	814912
Parsvnath	22.95	17.03	15156195	Krishana Phosch	438.9	-10.01	414757
Veranda Learn	227.5	16.86	2582686	Indifra	21.1	-9.83	4000
J G Chemicals	466	15.18	4001316	Ideal Technopla	132	-9.59	1000
Eimco Elecon	2967.3	13.17	115282	Sammaan Capital	123.97	-8.66	37302829



Nifty Daily chart with RSI indicator



BankNifty Daily chart with RSI indicator

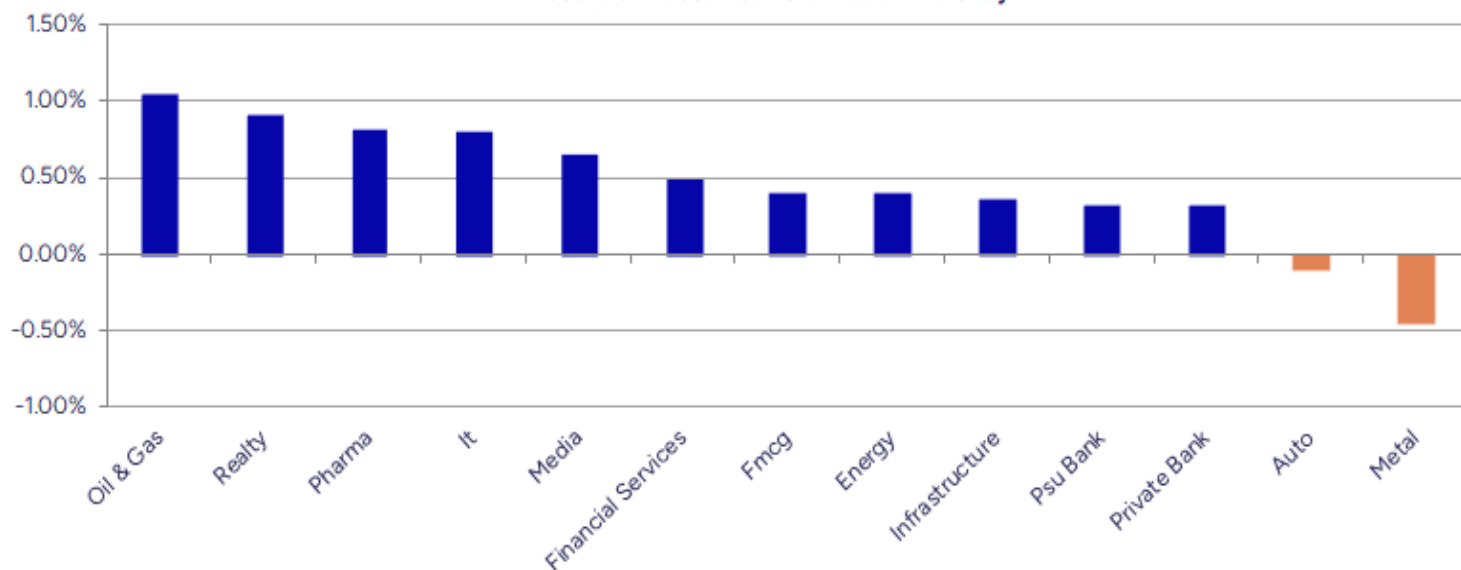


Breakouts - Cross above 200 DMA				Breakdown - Cross below 200 DMA			
Company Name	LCP	Change %	200 DMA	Company Name	LCP	Change %	200 DMA
PC Jeweller	16.82	18.20	14.23	Trent	5487	-10.86	6155.19
Parsvnath	22.95	11.19	20.64	Nilkamal	1720.6	-2.81	1770.38
Mazda	290.54	8.72	267.23	Dhani Services	66.52	-2.61	68.3
EPM	109.9	7.57	102.17	Avro India	169.4	-2.32	173.42
Vaswani Ind	49.7	6.15	46.82	Trejhara	233.02	-2.07	237.95
JK Paper	402	4.18	385.86	Zodiac Clothing	111	-1.50	112.69
Sapphire Foods	333.75	3.60	322.15	Aditya Birla Re	2299	-1.17	2326.27
Aartech Solonic	69.02	3.25	66.85	United Nilgiri	440.3	-1.16	445.45
India Tourism D	618	1.92	606.36	Parin Enter	323.85	-1.10	327.45
Suryalakshmi Co	76.66	1.83	75.28	BL Kashyap	69.81	-0.95	70.48
Ramdevbaba Solv	120.25	1.66	118.29	Oil India	445.95	-0.91	450.06
GE Shipping	1032	1.65	1015.28	Infinium Pharma	287	-0.87	289.51
Indus Infra Tru	113.39	1.51	111.7	Vinsys IT	378	-0.82	381.13
Manaksia Alumin	27.55	1.44	27.16	Fairchem Org.	982.4	-0.79	990.22
Xpro India	1235	1.34	1218.63	TAC Infosec	1084	-0.76	1092.27
STC India	145.8	1.33	143.88	Sanofi India	6054	-0.64	6092.96
GM Breweries	757.8	1.33	747.85	TT	13.92	-0.64	14.01
Andhra Paper	88	1.29	86.88	Utssav CZ Gold	227	-0.61	228.39

* Stocks crossing above its Simple Moving Average (200DMA)

* Stocks crossing below its Simple Moving Average (200DMA)

Sectoral Indices - Gainers Losers for the day



Stocks witnessing a volume surge as compared to their 5 day average volume

Watch out for the stocks that have seen a huge spurt in its share price over the last three days

Volume Shockers - NSE					
Company name	LCP	% Chg	Volume	Avg Vol *	% Chg
Sapphire Foods	333.75	4.12	26524193	68650	38537
Mazda	290.54	20	1325696	12370	10617
Veranda Learnin	227.5	16.86	2582686	38553	6599
Vaswani Ind	49.7	11.51	2689473	40752	6500
J G Chemicals	466	15.18	4001316	87869	4454
Suryalakshmi Co	76.66	8.52	456378	10266	4345
KCK Industries	43.25	0.23	510000	13600	3650
CreditAccess Gr	1279	3.06	7400824	198052	3637
JK Paper	402	9.19	7730689	223196	3364
Sigachi Ind	45.7	9.12	32996754	1046438	3053
AMD Industries	54.75	10.21	217723	7359	2859
Atal	20.49	4.43	2145592	100889	2027
Krishna Institu	684.75	1.63	1189218	59456	1900
Emcure Pharmace	1249.9	-2.34	5833697	309849	1783
Jeena Sikho	530	8.82	339300	18612	1723
EPM	109.9	12.75	546453	31675	1625
Orient Paper	30.25	7.23	6199983	425728	1356
Tamil Newsprint	182.89	7.97	1180877	100068	1080
Eimco Elecon	2967.3	13.17	115282	10149	1036
Cello World	641	3.24	857094	82395	940

* the Average Volume of last 5 days

Price Shockers - NSE				
Company name	LCP	Prv Close	% Chg	Volume
DELPHI WORLD	220.29	162.96	35.18	277056
PC Jeweller	16.82	13.07	28.69	436148895
Sumeet Ind	104.95	82.61	27.04	6092
Tamil Telecom	20.13	15.86	26.92	167852
Sindhu Trade	35.77	28.65	24.85	43977308
Parsvnath	22.95	18.74	22.47	15156195
SML Isuzu	2725	2237.5	21.79	1106439
Mazda	290.54	240.19	20.96	1325696
Auro Impex	55.4	46.5	19.14	4800
ORIENT CERATECH	41.9	35.73	17.27	810830
Phantom Digital	307	262.5	16.95	148800
J G Chemicals	466	400.4	16.38	4001316
Saksoft	232.6	200.5	16.01	6984388
Transwarranty	20.85	17.98	15.96	148400
Lokesh Machines	211.47	182.68	15.76	17040
Sri Adhikari	1171.25	1011.85	15.75	5667
BSL	174.67	150.9	15.75	8354
Swan Defence	251.98	217.69	15.75	212
Kalyani Comm	138.09	119.3	15.75	500
IRIS Business S	369.8	319.5	15.74	93777

* the % price rise of the last 3 days

Nifty 50 stocks - Summary Details											
Symbol	LTP	Chng	% Chng	Volume (lacs)	Turnover (crs.)	52w High	Diff with 52w H	52w Low	Diff with 52w L	365 days % chng	30 days % chng
NIFTY 50	25461.00	55.70	0.22%	1934.99	19100.71	26277.35	3.11%	21743.65	17.10%	3.52%	4.61%
ADANIENT	2599.00	-12.20	-0.47%	3.70	96.25	3258.00	20.23%	2025.00	28.35%	5.68%	-18.17%
ADANIPTS	1425.50	-5.60	-0.39%	6.08	86.84	1604.95	11.18%	995.65	43.17%	-0.08%	-5.27%
APOLLOHOSP	7550.00	-15.00	-0.20%	3.49	263.81	7600.50	0.66%	6001.00	25.81%	11.05%	22.16%
ASIANPAINT	2428.00	-2.90	-0.12%	6.02	146.02	3394.90	28.48%	2124.75	14.27%	7.77%	-16.91%
AXISBANK	1175.20	5.10	0.44%	39.26	460.05	1339.65	12.28%	933.50	25.89%	-0.88%	-8.51%
BAJAJ-AUTO	8430.00	47.50	0.57%	1.84	154.63	12774.00	34.01%	7089.35	18.91%	-2.11%	-11.04%
BAJAJFINSV	1992.10	11.40	0.58%	15.09	302.59	2135.00	6.69%	1523.25	30.78%	-0.56%	24.25%
BAJFINANCE	926.00	15.85	1.74%	106.13	987.12	978.80	5.39%	642.50	44.12%	-89.86%	-87.46%
BEL	427.50	1.25	0.29%	166.18	713.01	436.00	1.95%	240.25	77.94%	10.43%	35.53%
BHARTIARTL	2018.30	-1.00	-0.05%	21.78	438.73	2045.80	1.34%	1408.45	43.30%	9.67%	42.22%
CIPLA	1512.00	3.30	0.22%	11.18	169.33	1702.05	11.17%	1335.00	13.26%	2.41%	1.68%
COALINDIA	386.10	-0.35	-0.09%	39.91	153.80	543.55	28.97%	349.25	10.55%	-1.63%	-20.31%
DRREDDY	1310.00	18.70	1.45%	14.66	190.41	1421.49	7.84%	1020.00	28.43%	3.44%	-79.90%
EICHERMOT	5625.50	-90.50	-1.58%	1.85	104.47	5906.50	4.76%	4508.75	24.77%	6.76%	21.82%
GRASIM	2802.90	-14.70	-0.52%	2.87	80.29	2896.00	3.21%	2276.95	23.10%	10.39%	2.74%
HCLTECH	1725.90	14.00	0.82%	7.68	132.11	2012.20	14.23%	1302.75	32.48%	5.00%	15.59%
HDFCBANK	1992.70	5.60	0.28%	39.32	781.48	2027.10	1.70%	1588.05	25.48%	3.25%	12.35%
HDFCLIFE	784.55	-1.30	-0.17%	15.37	120.47	820.75	4.41%	584.30	34.27%	3.69%	31.82%
HEROMOTOCO	4337.80	27.20	0.63%	4.37	190.02	6246.25	30.55%	3344.00	29.72%	2.42%	-22.75%
HINDALCO	696.95	4.10	0.59%	26.81	186.30	772.65	9.80%	546.45	27.54%	9.63%	0.17%
HINDUNILVR	2341.30	27.90	1.21%	12.42	289.56	3035.00	22.86%	2136.00	9.61%	-1.65%	-7.85%
ICICIBANK	1443.00	17.10	1.20%	50.66	726.29	1471.60	1.94%	1153.00	25.15%	-0.83%	18.67%
INDUSINDBK	854.50	-7.90	-0.92%	26.59	227.74	1498.00	42.96%	606.00	41.01%	7.69%	-40.75%
INFY	1639.70	21.00	1.30%	44.11	719.67	2006.45	18.28%	1307.00	25.46%	4.91%	-0.53%
ITC	412.70	-0.65	-0.16%	82.57	340.83	528.50	21.91%	390.15	5.78%	-0.86%	-3.49%
JIOFIN	325.00	-0.05	-0.02%	96.23	312.83	363.00	10.47%	198.65	63.60%	14.49%	-7.47%
JSWSTEEL	1040.00	-6.10	-0.58%	9.61	99.89	1074.90	3.25%	854.15	21.76%	7.42%	10.07%
KOTAKBANK	2130.00	3.40	0.16%	16.86	357.79	2301.90	7.47%	1679.05	26.86%	4.02%	17.45%
LT	3595.00	12.10	0.34%	6.96	249.83	3963.50	9.30%	2965.30	21.24%	-1.70%	-0.87%
M&M	3162.00	12.90	0.41%	9.68	305.43	3270.95	3.33%	2425.00	30.39%	4.20%	10.30%
MARUTI	12647.00	-105.00	-0.82%	2.26	285.25	13680.00	7.55%	10725.00	17.92%	5.15%	5.18%
NESTLEIND	2392.00	13.60	0.57%	3.95	94.03	2778.00	13.89%	2110.00	13.36%	-0.13%	-6.39%
NTPC	335.75	1.15	0.34%	58.99	197.04	448.45	25.13%	292.80	14.67%	1.93%	-10.21%
ONGC	245.20	1.15	0.47%	77.12	188.51	345.00	28.93%	205.00	19.61%	2.86%	-11.16%
POWERGRID	294.70	1.00	0.34%	141.94	415.80	366.25	19.54%	247.30	19.17%	1.89%	-12.37%
RELIANCE	1528.10	10.30	0.68%	66.04	1006.09	1608.80	5.02%	1114.85	37.07%	7.99%	-51.12%
SBILIFE	1796.40	-13.80	-0.76%	6.86	122.98	1936.00	7.21%	1372.55	30.88%	1.97%	20.97%
SBIN	811.25	4.15	0.51%	43.19	349.19	899.00	9.76%	680.00	19.30%	-0.33%	-3.91%
SHRIRAMFIN	679.00	3.60	0.53%	38.43	260.30	730.45	7.04%	493.35	37.63%	4.19%	-76.31%
SUNPHARMA	1675.90	-3.80	-0.23%	12.64	212.20	1960.35	14.51%	1498.30	11.85%	0.73%	9.50%
TATACONSUM	1089.50	0.10	0.01%	5.73	62.27	1250.10	12.85%	882.90	23.40%	-2.26%	-4.97%
TATAMOTORS	688.00	-2.40	-0.35%	49.42	340.50	1179.00	41.65%	535.75	28.42%	-1.91%	-29.24%
TATASTEEL	163.10	-2.81	-1.69%	229.35	374.69	178.19	8.47%	122.62	33.01%	5.44%	-5.93%
TCS	3420.00	19.20	0.56%	11.09	378.71	4592.25	25.53%	3056.05	11.91%	-0.13%	-14.23%
TECHM	1655.00	13.10	0.80%	13.11	216.80	1807.70	8.45%	1209.40	36.84%	8.30%	12.98%
TITAN	3684.00	5.30	0.14%	6.30	231.10	3867.00	4.73%	2925.00	25.95%	4.51%	9.48%
TRENT	5487.00	-704.00	-11.37%	75.17	4204.53	8345.00	34.25%	4488.00	22.26%	10.75%	12.68%
ULTRACEMCO	12505.00	107.00	0.86%	1.92	238.06	12575.00	0.56%	10047.85	24.45%	12.35%	4.43%
WIPRO	269.45	2.40	0.90%	71.42	192.23	324.60	16.99%	228.00	18.18%	8.46%	-50.45%
ETERNAL	261.20	0.35	0.13%	130.77	342.86	304.70	14.28%	194.80	34.09%	9.74%	#VALUE!

Disclaimer / Disclosures

ANALYST CERTIFICATION

I, Mrs. Vaishali Parekh B.com, Research Analyst, author and the name subscribed to this report, hereby certify that all of the views expressed in this research report accurately reflect our views about the subject issuer(s) or securities. We also certify that no part of our compensation was, is, or will be directly or indirectly related to the specific recommendation(s) or view(s) in this report.

Terms & conditions and other disclosures:

Prabhudas Lilladher Pvt. Ltd, Mumbai, India (hereinafter referred to as "PL") is engaged in the business of Stock Broking, Portfolio Manager, Depository Participant and distribution for third party financial products. PL is a subsidiary of Prabhudas Lilladher Advisory Services Pvt Ltd. which has its various subsidiaries engaged in business of commodity broking, investment banking, financial services (margin funding) and distribution of third party financial/other products, details in respect of which are available at www.plindia.com

This document has been prepared by the Research Division of PL and is meant for use by the recipient only as information and is not for circulation. This document is not to be reported or copied or made available to others without prior permission of PL. It should not be considered or taken as an offer to sell or a solicitation to buy or sell any security.

The information contained in this report has been obtained from sources that are considered to be reliable. However, PL has not independently verified the accuracy or completeness of the same. Neither PL nor any of its affiliates, its directors or its employees accepts any responsibility of whatsoever nature for the information, statements and opinion given, made available or expressed herein or for any omission therein.

Recipients of this report should be aware that past performance is not necessarily a guide to future performance and value of investments can go down as well. The suitability or otherwise of any investments will depend upon the recipient's particular circumstances and, in case of doubt, advice should be sought from an independent expert/advisor.

Either PL or its affiliates or its directors or its employees or its representatives or its clients or their relatives may have position(s), make market, act as principal or engage in transactions of securities of companies referred to in this report and they may have used the research material prior to publication.

PL may from time to time solicit or perform investment banking or other services for any company mentioned in this document.

PL is registered as Research Analyst under Securities and Exchange Board of India (Research Analysts) Regulations, 2014 PL submits that no material disciplinary action has been taken on us by any Regulatory Authority impacting Equity Research Analysis activities.

PL or its research analysts or its associates or his relatives do not have any financial interest in the subject company.

PL or its research analysts or its associates or his relatives do not have actual/beneficial ownership of one per cent or more securities of the subject company at the end of the month immediately preceding the date of publication of the research report.

PL or its research analysts or its associates or his relatives do not have any material conflict of interest at the time of publication of the research report.

PL or its associates might have received compensation from the subject company in the past twelve months.

PL or its associates might have managed or co-managed public offering of securities for the subject company in the past twelve months or mandated by the subject company for any other assignment in the past twelve months.

PL or its associates might have received any compensation for investment banking or merchant banking or brokerage services from the subject company in the past twelve months.

PL or its associates might have received any compensation for products or services other than investment banking or merchant banking or brokerage services from the subject company in the past twelve months PL or its associates might have received any compensation or other benefits from the subject company or third party in connection with the research report.

PL encourages independence in research report preparation and strives to minimize conflict in preparation of research report. PL or its analysts did not receive any compensation or other benefits from the subject Company or third party in connection with the preparation of the research report. PL or its Research Analysts do not have any material conflict of interest at the time of publication of this report.

It is confirmed that Mrs.Vaishali Parekh B.com, Research Analyst of this report has not received any compensation from the companies mentioned in the report in the preceding twelve months compensation of our Research Analysts is not based on any specific merchant banking, investment banking or brokerage service transactions.

The Research analysts for this report certifies that all of the views expressed in this report accurately reflect his or her personal views about the subject company or companies and its or their securities, and no part of his or her compensation was, is or will be, directly or indirectly related to specific recommendations or views expressed in this report.

The research analysts for this report has not served as an officer, director or employee of the subject company PL or its research analysts have not engaged in market making activity for the subject company

Our sales people, traders, and other professionals or affiliates may provide oral or written market commentary or trading strategies to our clients that reflect opinions that are contrary to the opinions expressed herein, and our proprietary trading and investing businesses may make investment decisions that are inconsistent with the recommendations expressed herein. In reviewing these materials, you should be aware that any or all of the foregoing, among other things, may give rise to real or potential conflicts of interest.

PL and its associates, their directors and employees may (a) from time to time, have a long or short position in, and buy or sell the securities of the subject company or (b) be engaged in any other transaction involving such securities and earn brokerage or other compensation or act as a market maker in the financial instruments of the subject company or act as an advisor or lender/borrower to the subject company or may have any other potential conflict of interests with respect to any recommendation and other related information and opinions.