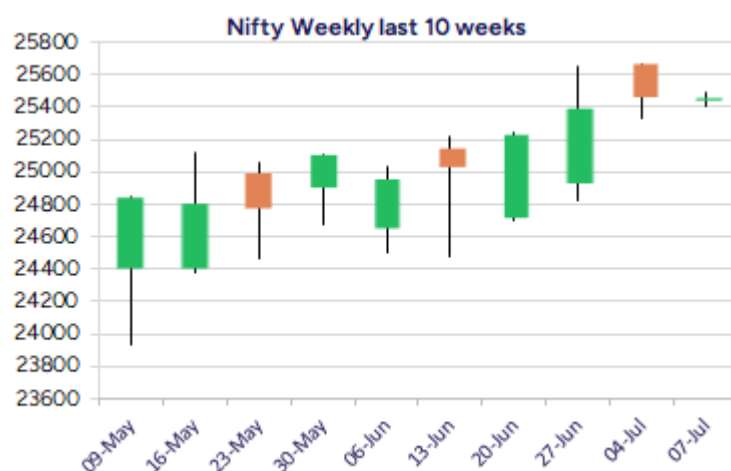
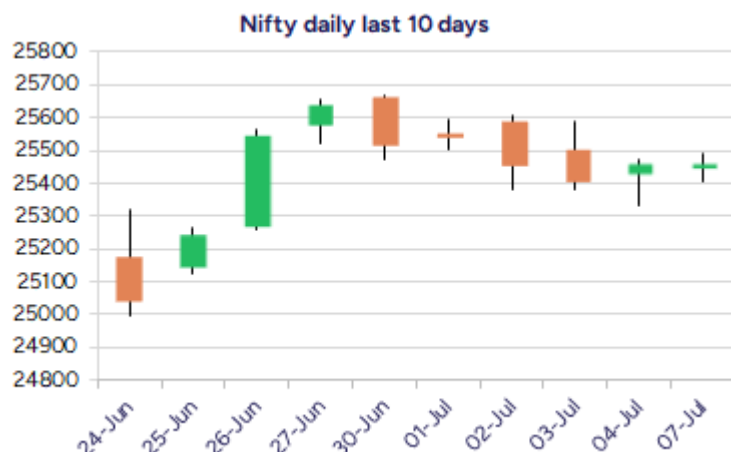


Date: 08th July 2025

* Sensex 83442.50 + 09.61

* Nifty 25461.30 + 0.30

* Bank Nifty 56949.20 - 82.70



*Blue candle → Close rate > Open rate * Red candle → Close rate < Open rate

Market Preview

Nifty consolidates near 25450 zone

Nifty witnessed a flat session for almost the entire day hovering near the 25450 zone with bias maintained positive anticipating for further rise in the coming days. BankNifty amid some volatility during the intraday session ended just below the 57000 zone with anticipation of further upward move in the coming sessions. The market breadth was weak with the advance decline indicating a ratio of 2:3 at close.

Market Forecast

Nifty daily range 25300-25600

Nifty index continue to remain sluggish for another session witnessing consolidation with a very narrow range bound movement during the intraday session to end on a flat note with bias and sentiment sustained, having the important near-term support positioned near 25250-25300 zone. As mentioned earlier, on the upside, we can expect for a revival and carry on with the positive move for higher targets of 25700 and 26200 levels once a decisive breach above the 25650 zone is confirmed.

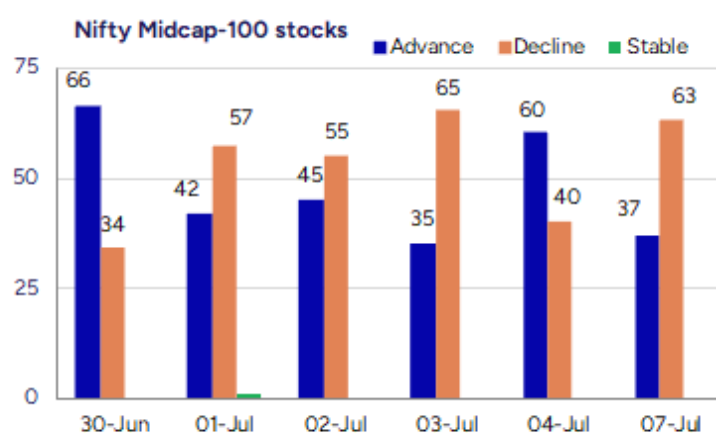
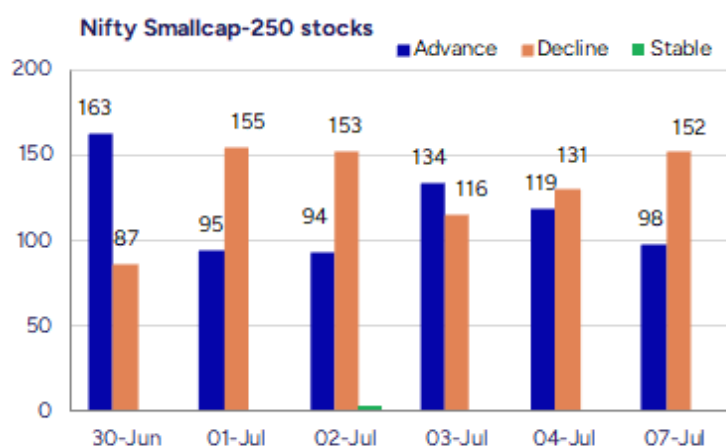
BankNifty, witnessed some volatility in the initial half finding resistance near the 57150 zone and slipped down to remain rangebound and ended the session almost on a flat note just below the 57000 zone with bias maintained intact and formation on a higher bottom pattern visible on the daily chart. The index continue to have the 56000 zone as the important support, as mentioned earlier, which needs to be sustained as of now, and once a decisive breach above the resistance level of 57600 is breached, thereafter one can expect for fresh targets of 58500 and 60000 levels in the coming days.

The support for the day is seen at 25300 levels while the resistance is seen at 25600 levels. BankNifty would have the daily range of 56500-57600 levels.

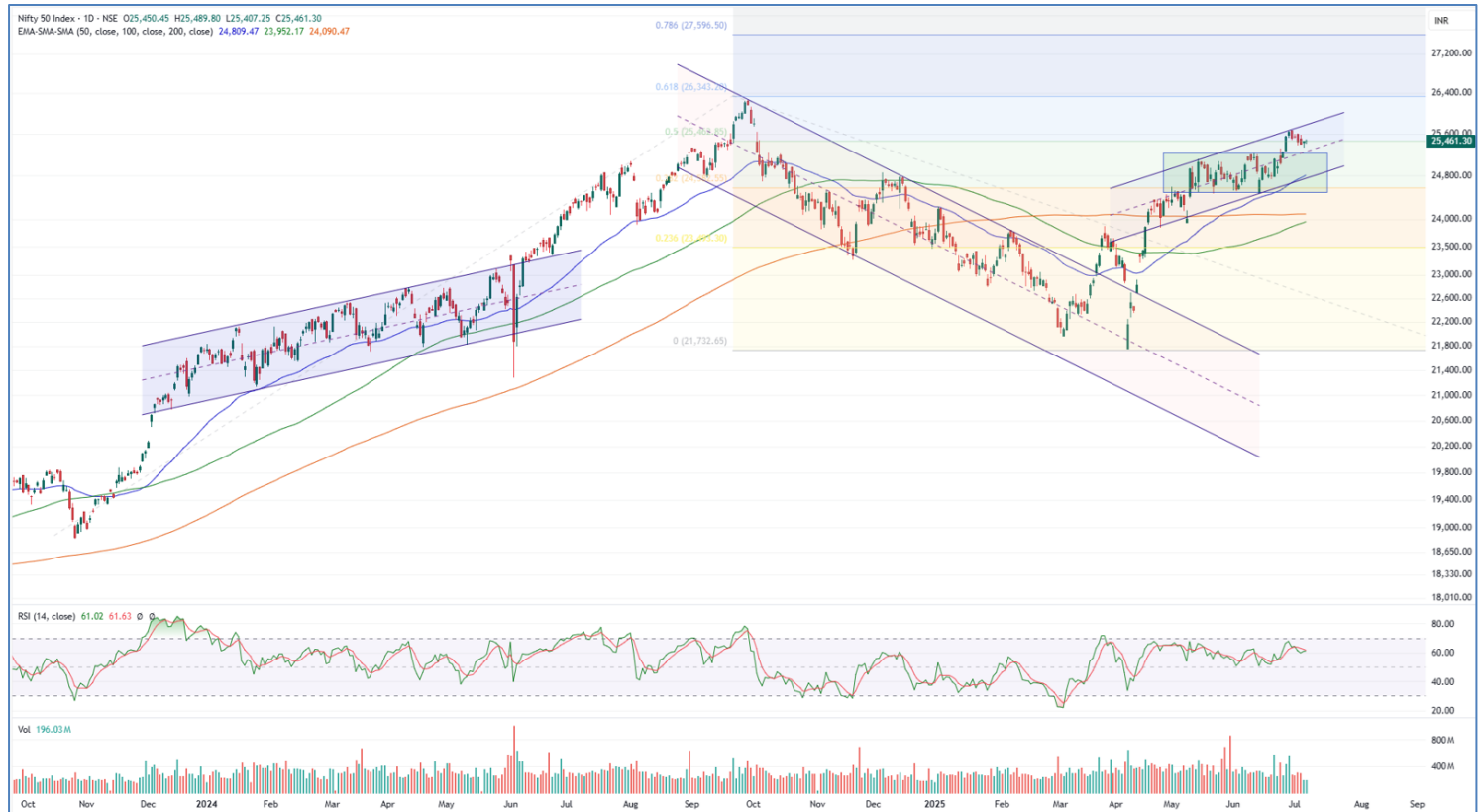
Indices	Period	Closing	% Chng	Trend	Reversal	2 Sup	1 Sup	Pivot	1 Res	2 Res
Nifty	Daily	25461.30	0.00%	-4	25532.10	25370	25416	25453	25498	25535
	Weekly	25461.00	-0.69%	3	25328.50	25158	25310	25486	25637	25814
	Monthly	25517.05	3.10%	2	25312.05	24028	24772	25217	25962	26407
Bank Nifty	Daily	56949.20	-0.15%	-4	57329.60	56666	56808	56980	57121	57294
	Weekly	57031.90	-0.72%	2	57012.35	56111	56571	57086	57546	58061
	Monthly	57312.75	2.80%	3	54910.25	54237	55775	56687	58226	59138
Sensex	Daily	83442.50	0.01%	-4	83660.00	83153	83298	83407	83552	83662
	Weekly	83432.89	-0.74%	3	83092.35	82443	82938	83511	84006	84580
	Monthly	83606.46	2.65%	2	81262.65	79027	81317	82703	84992	86378

Gainers - Losers (Nifty 500 Stocks)

Gainers				Losers			
Company Name	Last Price	% Gain	Volume	Company Name	Last Price	% Loss	Volume
Vibhor Steel	187.09	20	710472	Falcon Technopr	21.1	-13.35	186000
AKI India	11.14	19.91	99700	Paramatrix Tech	85.7	-11.65	10800
Jaiprakash Pow	22.65	19.53	931489671	Yash Optics	81.2	-8.66	139200
Sharda Motor	1216.7	15.58	733510	Gloster	726.3	-7.58	14749
KRN Heat Ex	933.4	14.29	8909888	Upsurge Seeds	157.9	-7.12	5100
Jainik Power	76.8	13.19	240000	Sharda Crop	853.5	-7.07	596708
J G Chemicals	519	12.97	10165969	Thaai Casting	107.15	-6.83	50400



Nifty Daily chart with RSI indicator



BankNifty Daily chart with RSI indicator



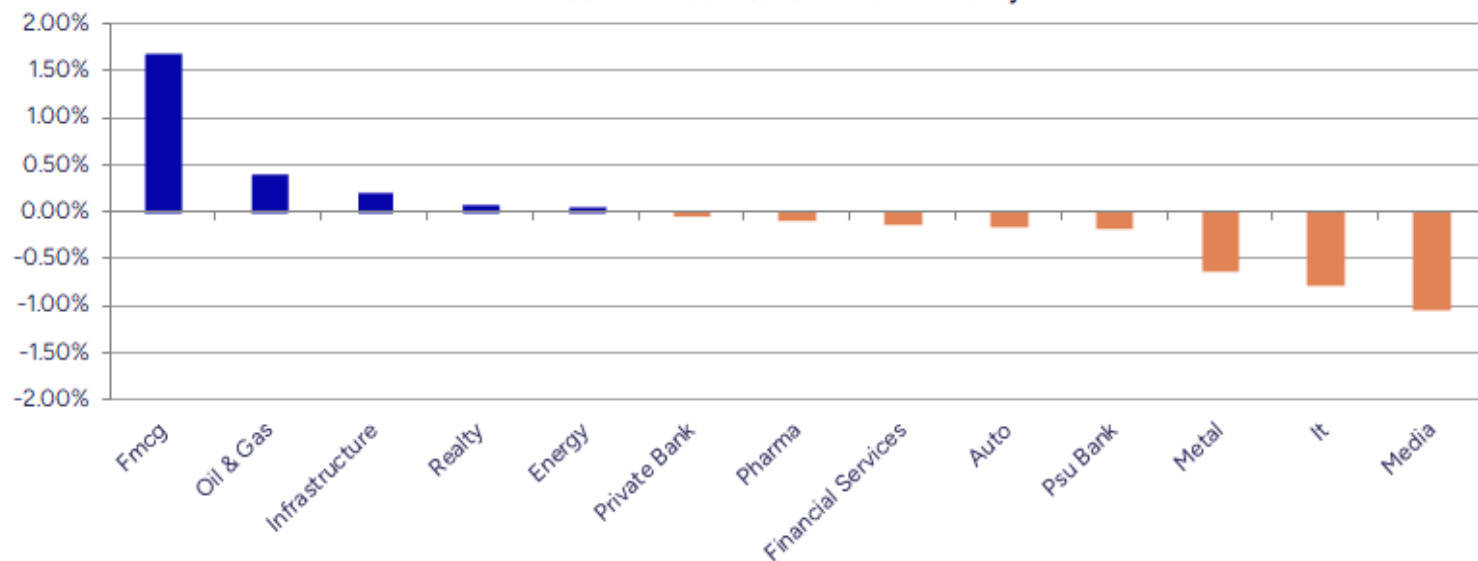
Breakouts - Cross above 200 DMA			
Company Name	LCP	Change %	200 DMA
Godrej Consumer	1268.4	5.91	1197.65
HF	580.85	4.98	553.31
Aurionpro Solut	1607.9	4.97	1531.75
Murudeshwar Cer	46.47	4.71	44.38
Transformers	488.2	3.56	471.42
Orient Abrasive	43.21	3.42	41.78
Mohit Ind	31.69	2.09	31.04
Westlife Food	773	2.06	757.43
Krystal Integra	636.6	2.01	624.06
Laxmi Cotspin	29.72	1.75	29.21
Parin Enter	333.2	1.54	328.14
Digicontent	47.74	1.53	47.02
Mcleod	35.86	1.47	35.34
Dixon Technolog	15433	1.34	15229.28
Thirumalai Chem	291.55	1.33	287.73
Vinyl Chemicals	323.3	1.18	319.54
Akzo Nobel	3609	1.09	3570.21
Thejo Engg	2004.2	0.61	1991.95

* Stocks crossing above its Simple Moving Average (200DMA)

Breakdown - Cross below 200 DMA			
Company Name	LCP	Change %	200 DMA
Equitas Bank	63.56	-3.84	66.1
Yash Optics & L	81.2	-3.38	84.04
Manugraph Ind	19.71	-3.19	20.36
Maheshwari Logi	58.43	-2.96	60.21
NELCO	970.2	-2.81	998.29
MMP Industries	289.25	-2.73	297.38
Pyramid Techno	175.2	-2.57	179.82
Manaksia Alumin	26.48	-2.47	27.15
Websol Energy	1283.7	-2.27	1313.48
Incredible Ind	40.64	-2.07	41.5
Naga Dhunseri	4250.1	-1.88	4331.38
Happy Forgings	955.5	-1.85	973.48
Kamat Hotels	234.51	-1.77	238.74
Marksans Pharma	257.4	-1.71	261.88
Premier Energie	1042	-1.52	1058.04
Ramdevbaba Solv	116.8	-1.38	118.43
Siyaram Silk	700.1	-1.33	709.56
Bharat Gears	88.66	-1.23	89.76

* Stocks crossing below its Simple Moving Average (200DMA)

Sectoral Indices - Gainers Losers for the day



Stocks witnessing a volume surge as compared to their 5 day average volume

Watch out for the stocks that have seen a huge spurt in its share price over the last three days

Volume Shockers - NSE					
Company name	LCP	% Chg	Volume	Avg Vol *	% Chg
Mazda	317.27	9.2	2368543	12370	19048
Vibhor Steel	187.09	20	710472	17339	3998
Cool Caps	98.6	7.88	327500	8400	3799
Sunrest	50.4	-3.08	72000	2240	3114
KCK Industries	43	-0.58	307500	13600	2161
Lotus Eye Care	75.35	4.84	340945	15632	2081
Tega Industries	1755.3	3.99	530586	24591	2058
VIP Clothing	42.21	4.77	2505087	124753	1908
Motisons Jewell	22.18	4.33	14248140	764990	1763
Veranda Learnin	234.12	3.14	675707	38553	1653
Falcon Technopr	21.1	-13.35	186000	11280	1549
Mohit Ind	31.69	10	149136	9117	1536
Visaman Global	53.95	9.65	174000	10800	1511
Murudeshwar Cer	46.47	7.62	319360	20035	1494
Krishna Institu	694.95	1.3	941181	59456	1483
HF	580.85	7.87	1131581	73054	1449
Jeena Sikho	548.85	4.47	274950	18612	1377
Atal	20.86	2.15	1463991	100889	1351
Oneclick Logi.	205.65	0.15	62400	4320	1344
Sigachi Ind	44.42	-0.89	15048083	1046438	1338

* the Average Volume of last 5 days

Price Shockers - NSE				
Company name	LCP	Prv Close	% Chg	Volume
PC Jeweller	18.7	13.83	35.21	569295902
Mazda	317.27	237.55	33.56	2368543
AKI India	11.14	8.43	32.15	99700
J G Chemicals	519	399.45	29.93	10165969
Parsvnath	24.49	19.21	27.49	12229841
Sumeet Ind	110.19	86.74	27.03	9975
Jainik Power	76.8	62.55	22.78	240000
Lokesh Machines	232.61	191.81	21.27	21584
Tamil Telecom	21.13	17.44	21.16	90209
Vibhor Steel	187.09	155.21	20.54	710472
Jaiprakash Pow	22.65	18.8	20.48	931489671
Sindhu Trade	33.4	27.98	19.37	26608805
Veranda Learn	234.12	196.3	19.27	675707
ORIENT CERATECH	43.21	36.36	18.84	231842
Sharda Motor	1216.7	1042.2	16.74	733510
Sri Adhikari	1229.8	1062.4	15.76	2204
BSL	183.4	158.44	15.75	26187
Swan Defence	264.57	228.57	15.75	247
IRIS Business S	388.25	335.45	15.74	237185
Digjam	43.96	37.99	15.71	4398

* the % price rise of the last 3 days

Nifty 50 stocks - Summary Details											
Symbol	LTP	Chng	% Chng	Volume (lacs)	Turnover (crs.)	52w High	Diff with 52w H	52w Low	Diff with 52w L	365 days % chng	30 days % chng
NIFTY 50	25461.30	0.30	#VALUE!	1960.41	16922.31	26277.35	3.11%	21743.65	17.10%	1.83%	4.68%
ADANIENT	2587.60	-11.50	-0.44%	4.12	106.45	3258.00	20.58%	2025.00	27.78%	2.56%	-17.43%
ADANIPTS	1435.60	11.20	0.79%	7.65	109.22	1604.95	10.55%	995.65	44.19%	-3.21%	-5.07%
APOLLOHOSP	7600.00	46.50	0.62%	4.49	340.94	7625.50	0.33%	6001.00	26.65%	8.80%	19.36%
ASIANPAINT	2448.00	23.80	0.98%	8.69	212.54	3394.90	27.89%	2124.75	15.21%	7.97%	-17.43%
AXISBANK	1173.10	-4.50	-0.38%	57.83	679.30	1339.65	12.43%	933.50	25.67%	-1.42%	-8.50%
BAJAJ-AUTO	8462.00	29.00	0.34%	1.23	104.10	12774.00	33.76%	7089.35	19.36%	-2.36%	-12.48%
BAJAJFINSV	2007.00	12.60	0.63%	8.62	172.62	2135.00	6.00%	1523.25	31.76%	0.22%	26.26%
BAJFINANCE	923.65	-1.65	-0.18%	33.84	312.59	978.80	5.63%	642.50	43.76%	-90.13%	-87.04%
BEL	417.00	-10.55	-2.47%	222.20	930.63	436.00	4.36%	240.25	73.57%	9.43%	31.94%
BHARTIARTL	2029.50	12.30	0.61%	41.65	842.96	2045.80	0.80%	1411.50	43.78%	7.86%	41.09%
CIPLA	1509.00	-4.30	-0.28%	10.61	160.39	1702.05	11.34%	1335.00	13.03%	0.60%	0.23%
COALINDIA	384.35	-1.75	-0.45%	28.10	108.14	543.55	29.29%	349.25	10.05%	-3.22%	-21.44%
DRREDDY	1309.00	1.60	0.12%	5.69	74.38	1421.49	7.91%	1020.00	28.33%	-1.02%	-79.95%
EICHERMOT	5688.00	59.00	1.05%	2.27	128.97	5906.50	3.70%	4508.75	26.15%	4.36%	18.82%
GRASIM	2780.00	-25.90	-0.92%	2.79	77.70	2896.00	4.01%	2276.95	22.09%	8.99%	2.11%
HCLTECH	1707.00	-18.90	-1.10%	13.66	233.80	2012.20	15.17%	1302.75	31.03%	5.39%	13.59%
HDFCBANK	1985.50	-3.80	-0.19%	56.75	1128.88	2027.10	2.05%	1588.05	25.03%	0.54%	20.70%
HDFCLIFE	789.35	4.25	0.54%	21.70	170.87	820.75	3.83%	584.30	35.09%	3.97%	29.27%
HEROMOTOCO	4305.10	-39.90	-0.92%	3.54	152.80	6246.25	31.08%	3344.00	28.74%	1.80%	-21.83%
HINDALCO	692.30	-7.15	-1.02%	24.82	171.62	772.65	10.40%	546.45	26.69%	7.58%	0.04%
HINDUNILVR	2408.70	69.40	2.97%	27.01	647.45	3035.00	20.64%	2136.00	12.77%	-2.11%	-8.15%
ICICIBANK	1435.90	-6.90	-0.48%	51.77	742.12	1471.60	2.43%	1153.00	24.54%	-1.16%	16.98%
INDUSINDBK	854.50	-1.75	-0.20%	32.95	282.51	1498.00	42.96%	606.00	41.01%	4.06%	-40.30%
INFY	1626.90	-13.80	-0.84%	32.94	537.10	2006.45	18.92%	1307.00	24.48%	4.92%	-0.41%
ITC	416.50	3.95	0.96%	68.45	284.66	528.50	21.19%	390.15	6.75%	-2.02%	-4.87%
JIOFIN	328.30	3.35	1.03%	131.72	431.65	363.00	9.56%	198.65	65.27%	10.53%	-7.88%
JSWSTEEL	1045.00	3.60	0.35%	8.72	90.79	1074.90	2.78%	854.15	22.34%	3.63%	9.16%
KOTAKBANK	2150.00	20.20	0.95%	21.71	464.73	2301.90	6.60%	1679.05	28.05%	2.72%	14.96%
LT	3580.00	-14.60	-0.41%	7.20	258.14	3963.50	9.68%	2965.30	20.73%	-1.69%	-0.90%
M&M	3158.00	-4.50	-0.14%	8.53	270.00	3270.95	3.45%	2425.00	30.23%	1.80%	9.79%
MARUTI	12507.00	-139.00	-1.10%	2.20	275.60	13680.00	8.57%	10725.00	16.62%	1.48%	4.48%
NESTLEIND	2420.40	27.60	1.15%	4.34	104.76	2778.00	12.87%	2110.00	14.71%	-1.01%	-7.05%
NTPC	338.15	2.65	0.79%	94.54	318.76	448.45	24.60%	292.80	15.49%	0.80%	-11.66%
ONGC	241.40	-3.84	-1.57%	92.20	223.48	345.00	30.03%	205.00	17.76%	2.16%	-14.91%
POWERGRID	295.55	1.55	0.53%	62.21	183.75	366.25	19.30%	247.30	19.51%	-0.61%	-13.38%
RELIANCE	1540.50	13.20	0.86%	72.51	1115.96	1608.80	4.25%	1114.85	38.18%	5.81%	-51.93%
SBILIFE	1809.00	9.30	0.52%	3.76	67.85	1936.00	6.56%	1372.55	31.80%	1.07%	17.67%
SBIN	807.00	-4.85	-0.60%	44.62	360.37	899.00	10.23%	680.00	18.68%	-0.15%	-5.57%
SHRIRAMFIN	670.90	-5.25	-0.78%	17.70	119.14	730.45	8.15%	493.35	35.99%	-1.76%	-76.41%
SUNPHARMA	1680.50	9.70	0.58%	15.51	259.71	1960.35	14.28%	1526.00	10.12%	-0.17%	6.88%
TATACONSUM	1106.00	16.30	1.50%	11.52	126.87	1250.10	11.53%	882.90	25.27%	-2.32%	-4.19%
TATAMOTORS	688.50	-0.55	-0.08%	54.28	373.62	1179.00	41.60%	535.75	28.51%	-3.09%	-30.65%
TATASTEEL	162.52	-0.49	-0.30%	174.69	283.81	178.19	8.79%	122.62	32.54%	3.50%	-6.70%
TCS	3410.60	-9.20	-0.27%	16.39	560.20	4592.25	25.73%	3056.05	11.60%	1.05%	-14.76%
TECHM	1622.40	-32.80	-1.98%	15.50	252.18	1807.70	10.25%	1209.40	34.15%	5.35%	13.27%
TITAN	3670.00	-16.90	-0.46%	8.29	303.98	3867.00	5.09%	2925.00	25.47%	3.57%	12.77%
TRENT	5497.00	41.00	0.75%	14.45	792.29	8345.00	34.13%	4488.00	22.48%	-5.56%	-2.92%
ULTRACEMCO	12356.00	-150.00	-1.20%	1.50	185.43	12575.00	1.74%	10047.85	22.97%	11.13%	6.98%
WIPRO	267.80	-2.25	-0.83%	48.49	130.11	324.60	17.50%	228.00	17.46%	8.63%	-49.53%
ETERNAL	259.20	-2.20	-0.84%	254.46	656.38	304.70	14.93%	194.80	33.06%	-0.18%	#VALUE!

Disclaimer / Disclosures

ANALYST CERTIFICATION

I, Mrs. Vaishali Parekh B.com, Research Analyst, author and the name subscribed to this report, hereby certify that all of the views expressed in this research report accurately reflect our views about the subject issuer(s) or securities. We also certify that no part of our compensation was, is, or will be directly or indirectly related to the specific recommendation(s) or view(s) in this report.

Terms & conditions and other disclosures:

Prabhudas Lilladher Pvt. Ltd, Mumbai, India (hereinafter referred to as "PL") is engaged in the business of Stock Broking, Portfolio Manager, Depository Participant and distribution for third party financial products. PL is a subsidiary of Prabhudas Lilladher Advisory Services Pvt Ltd. which has its various subsidiaries engaged in business of commodity broking, investment banking, financial services (margin funding) and distribution of third party financial/other products, details in respect of which are available at www.plindia.com

This document has been prepared by the Research Division of PL and is meant for use by the recipient only as information and is not for circulation. This document is not to be reported or copied or made available to others without prior permission of PL. It should not be considered or taken as an offer to sell or a solicitation to buy or sell any security.

The information contained in this report has been obtained from sources that are considered to be reliable. However, PL has not independently verified the accuracy or completeness of the same. Neither PL nor any of its affiliates, its directors or its employees accepts any responsibility of whatsoever nature for the information, statements and opinion given, made available or expressed herein or for any omission therein.

Recipients of this report should be aware that past performance is not necessarily a guide to future performance and value of investments can go down as well. The suitability or otherwise of any investments will depend upon the recipient's particular circumstances and, in case of doubt, advice should be sought from an independent expert/advisor.

Either PL or its affiliates or its directors or its employees or its representatives or its clients or their relatives may have position(s), make market, act as principal or engage in transactions of securities of companies referred to in this report and they may have used the research material prior to publication.

PL may from time to time solicit or perform investment banking or other services for any company mentioned in this document.

PL is registered as Research Analyst under Securities and Exchange Board of India (Research Analysts) Regulations, 2014 PL submits that no material disciplinary action has been taken on us by any Regulatory Authority impacting Equity Research Analysis activities.

PL or its research analysts or its associates or his relatives do not have any financial interest in the subject company.

PL or its research analysts or its associates or his relatives do not have actual/beneficial ownership of one per cent or more securities of the subject company at the end of the month immediately preceding the date of publication of the research report.

PL or its research analysts or its associates or his relatives do not have any material conflict of interest at the time of publication of the research report.

PL or its associates might have received compensation from the subject company in the past twelve months.

PL or its associates might have managed or co-managed public offering of securities for the subject company in the past twelve months or mandated by the subject company for any other assignment in the past twelve months.

PL or its associates might have received any compensation for investment banking or merchant banking or brokerage services from the subject company in the past twelve months.

PL or its associates might have received any compensation for products or services other than investment banking or merchant banking or brokerage services from the subject company in the past twelve months PL or its associates might have received any compensation or other benefits from the subject company or third party in connection with the research report.

PL encourages independence in research report preparation and strives to minimize conflict in preparation of research report. PL or its analysts did not receive any compensation or other benefits from the subject Company or third party in connection with the preparation of the research report. PL or its Research Analysts do not have any material conflict of interest at the time of publication of this report.

It is confirmed that Mrs.Vaishali Parekh B.com, Research Analyst of this report has not received any compensation from the companies mentioned in the report in the preceding twelve months compensation of our Research Analysts is not based on any specific merchant banking, investment banking or brokerage service transactions.

The Research analysts for this report certifies that all of the views expressed in this report accurately reflect his or her personal views about the subject company or companies and its or their securities, and no part of his or her compensation was, is or will be, directly or indirectly related to specific recommendations or views expressed in this report.

The research analysts for this report has not served as an officer, director or employee of the subject company PL or its research analysts have not engaged in market making activity for the subject company

Our sales people, traders, and other professionals or affiliates may provide oral or written market commentary or trading strategies to our clients that reflect opinions that are contrary to the opinions expressed herein, and our proprietary trading and investing businesses may make investment decisions that are inconsistent with the recommendations expressed herein. In reviewing these materials, you should be aware that any or all of the foregoing, among other things, may give rise to real or potential conflicts of interest.

PL and its associates, their directors and employees may (a) from time to time, have a long or short position in, and buy or sell the securities of the subject company or (b) be engaged in any other transaction involving such securities and earn brokerage or other compensation or act as a market maker in the financial instruments of the subject company or act as an advisor or lender/borrower to the subject company or may have any other potential conflict of interests with respect to any recommendation and other related information and opinions.