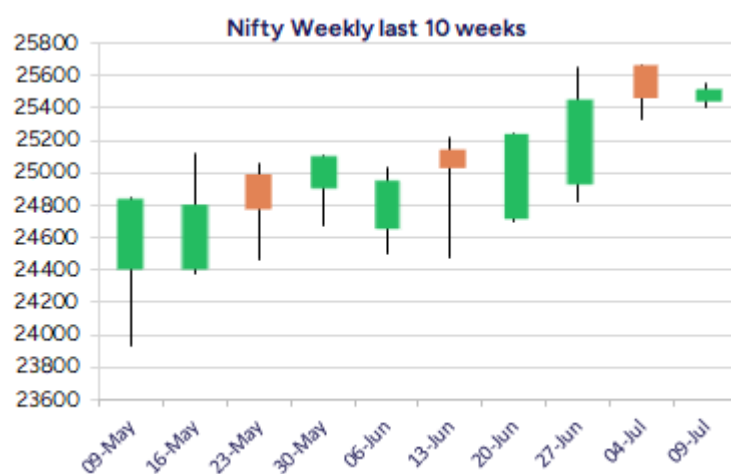
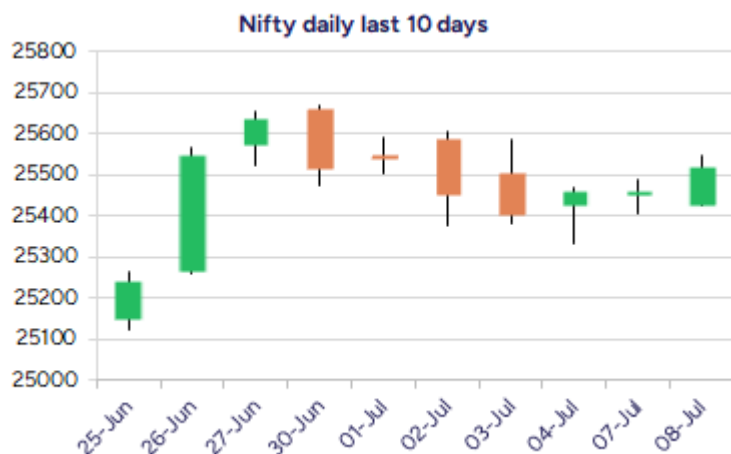


Date: 09<sup>th</sup> July 2025

\* Sensex 83712.51 + 270.01

\* Nifty 25522.50 + 61.20

\* Bank Nifty 57256.30 + 307.10



\*Blue candle → Close rate > Open rate \* Red candle → Close rate < Open rate

## Market Preview

### Nifty indicates an optimistic move

Nifty remained sluggish for almost most part of the session with a robust move in the last leg of the session to end on a positive note above 25500 zone. BankNifty indicated a decent pickup in the final hours with significant volume participation to close on a strong note above 57250 level. The market breadth was slightly on the weaker side with the advance decline indicating almost a flat ratio of 4:5 at close.

## Market Forecast

### Nifty daily range 25350-25700

Nifty has indicated a steady and gradual improvement on the daily chart in the last 3 sessions to turn the daily trend positive and further rise can be anticipated in the coming sessions with overall trend maintained positive. As mentioned earlier, the index has the important support positioned near the 25250-25300 zone which needs to be sustained as of now and on the upside, a decisive breach above the 25650 zone shall trigger for fresh upward move having higher targets of 25700 and 26200 levels in the coming days.

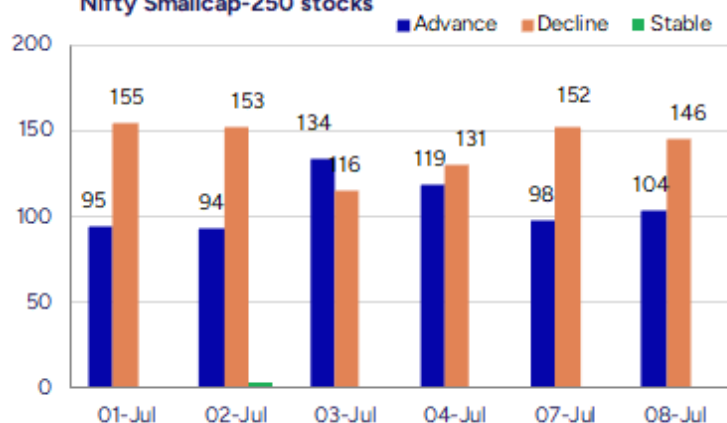
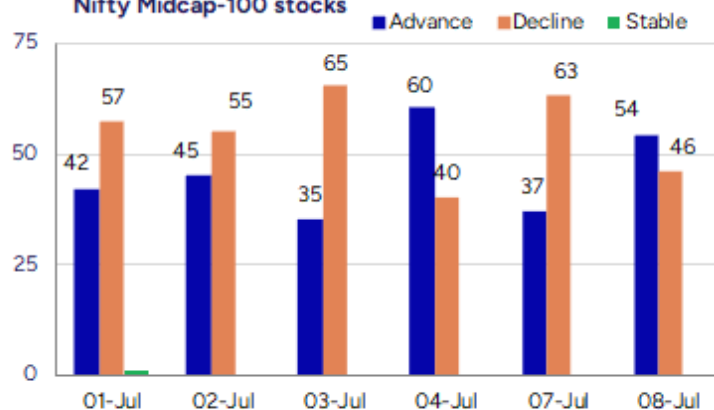
BankNifty, sustaining the important near-term support of 56650 zone in the last 2 sessions, has indicated a positive bullish candle formation to improve the bias and can expect for further gains in the coming sessions. The index continue to have the 56000 zone as the important and crucial support, as mentioned earlier, which needs to be sustained as of now, and once a decisive breach above the resistance level of 57600 is breached, thereafter one can expect for fresh targets of 58500 and 60000 levels in the coming days.

The support for the day is seen at 25350 levels while the resistance is seen at 25700 levels. BankNifty would have the daily range of 56800-58000 levels.

Indices	Period	Closing	% Chng	Trend	Reversal	2 Sup	1 Sup	Pivot	1 Res	2 Res
Nifty	Daily	25522.50	0.24%	-5	25510.20	25374	25448	25498	25572	25622
	Weekly	25461.00	-0.69%	3	25328.50	25158	25310	25486	25637	25814
	Monthly	25517.05	3.10%	2	25312.05	24028	24772	25217	25962	26407
Bank Nifty	Daily	57256.30	0.54%	-5	57244.70	56781	57018	57161	57399	57541
	Weekly	57031.90	-0.72%	2	57012.35	56111	56571	57086	57546	58061
	Monthly	57312.75	2.80%	3	54910.25	54237	55775	56687	58226	59138
Sensex	Daily	83712.51	0.32%	1	83618.35	83124	83418	83615	83910	84107
	Weekly	83432.89	-0.74%	3	83092.35	82443	82938	83511	84006	84580
	Monthly	83606.46	2.65%	2	81262.65	79027	81317	82703	84992	86378

**Gainers - Losers ( Nifty 500 Stocks )**

Gainers				Losers			
Company Name	Last Price	% Gain	Volume	Company Name	Last Price	% Loss	Volume
AKI India	13.36	19.93	112366	Nectar Life	18.5	-20.02	29095492
Monolithisch	402.35	18.55	972000	Rajdarshan Ind	52.35	-10.01	41200
Times Guaranty	188	12.76	118232	Cool Caps	88.75	-9.99	440000
Aimtron Electro	742.75	12.46	290000	Brace Port Logi	80.15	-8.92	1600
Sambhv Steel	111.15	11.83	21319639	Sharda Motor	1129.1	-7.2	363522
Tejas Cargo Ind	237	11.82	23200	Durlax Top Surf	39.6	-7.04	344000
Alok Industries	22.13	9.99	438376334	Nephro Care Ind	105.7	-6.91	88000

**Nifty Smallcap-250 stocks**

**Nifty Midcap-100 stocks**


## Nifty Daily chart with RSI indicator



## BankNifty Daily chart with RSI indicator

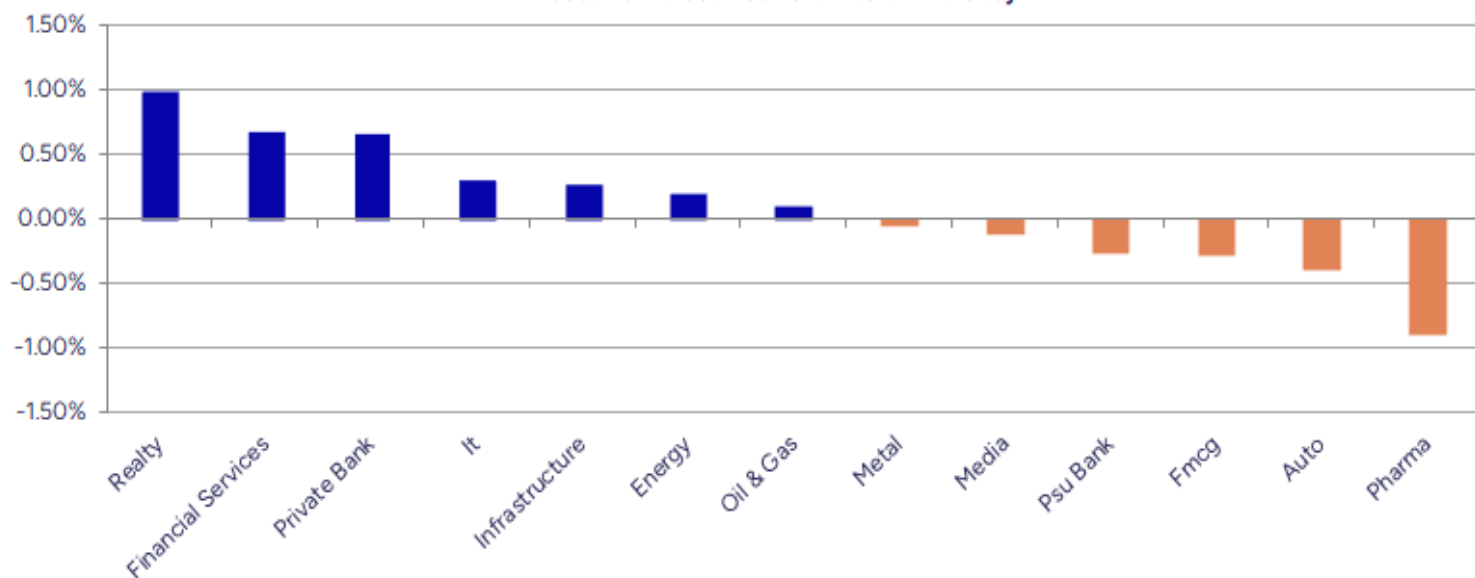


Breakouts - Cross above 200 DMA				Breakdown - Cross below 200 DMA			
Company Name	LCP	Change %	200 DMA	Company Name	LCP	Change %	200 DMA
AKI India	13.36	8.53	12.31	Arihant Capital	83.9	-4.86	88.19
Wonder Elect.	173.97	6.46	163.42	Electro Force	50.55	-4.21	52.77
Timescan Logist	66	4.22	63.33	Vision Infra	159.05	-3.73	165.22
Venus Pipes	1574.8	3.63	1519.62	Andhra Paper	83.91	-3.22	86.7
Maheshwari Logi	62.15	3.31	60.16	ABM Inter	57.67	-3.11	59.52
Siyaram Silk	732.8	3.13	710.53	Digicontent	45.82	-2.63	47.06
Mahindra Logist	366.95	2.95	356.43	Jayaswal Neco	38.81	-1.90	39.56
Maral Overseas	76.61	2.89	74.46	Ramco System	383.8	-1.70	390.45
VST Tillers	4271.4	2.29	4175.6	Arabian Petrole	80.3	-1.36	81.41
Medi Assist Hea	552.95	2.10	541.56	Auto Stampings	583.35	-1.32	591.15
Celebrity Fash	14.01	1.82	13.76	S P Apparels	830.9	-1.24	841.31
Vardhman Acryli	49.95	1.73	49.1	Gujarat Gas	474.3	-1.18	479.98
Linde India	6893.5	1.70	6778.13	Galaxy Surfacta	2487.8	-1.15	2516.84
Veranda Learnin	240.19	1.45	236.75	TAC Infosec	1084.5	-0.98	1095.27
Ramdevbaba Solv	120.05	1.27	118.54	AB Cotspin	425	-0.97	429.16
Veekayem Fashio	249.8	1.16	246.94	IVP	190.54	-0.94	192.35
BF Utilities	835	0.92	827.4	Cipla	1488.3	-0.91	1501.94
Lakshmi Finance	220.47	0.90	218.5	Atmastco L	221.1	-0.81	222.9

\* Stocks crossing above its Simple Moving Average (200DMA)

\* Stocks crossing below its Simple Moving Average (200DMA)

Sectoral Indices - Gainers Losers for the day



Stocks witnessing a volume surge as compared to their 5 day average volume

Watch out for the stocks that have seen a huge spurt in its share price over the last three days

Volume Shockers - NSE					
Company name	LCP	% Chg	Volume	Avg Vol *	% Chg
Vardhman Text	500.75	0.41	9910125	113348	8643
India Shelter	879.35	-0.31	7049467	93274	7458
Alok Industries	22.13	9.99	438376334	7128123	6050
Siyaram Silk	732.8	4.67	3501999	57050	6038
Digjam	46.15	4.98	116251	2089	5464
Cool Caps	88.75	-9.99	440000	8400	5138
Lakshmi Finance	220.47	3.39	116266	2763	4108
Hariom Pipe	455.8	6.53	10924304	282564	3766
Motisons Jewell	23.38	5.41	25670392	764990	3256
KCK Industries	44.15	2.67	455000	13600	3246
Times Guaranty	188	12.76	118232	4119	2770
Lokesh Machines	237.12	1.94	520537	20830	2399
Sonata	439.95	5.48	16246877	655575	2378
Nectar Life	18.5	-20.02	29095492	1217622	2290
Intrasoft Tech	112.13	1.27	326240	13965	2236
Gokaldas Export	923.3	2.55	4165553	191543	2075
Durlax Top Surf	39.6	-7.04	344000	17600	1855
Donear Ind	113.15	5.51	972504	57935	1579
Trident	32.29	3.76	88964003	5916741	1404
PDS	397.75	-0.62	1011810	71951	1306

\* the Average Volume of last 5 days

Price Shockers - NSE				
Company name	LCP	Prv Close	% Chg	Volume
AKI India	13.36	9.29	43.81	112366
Vibhor Steel	192.68	155.91	23.58	955393
NDL Ventures	77.96	64.44	20.98	59588
Jaiprakash Pow	22.39	18.95	18.15	708583884
Jainik Power	78.3	67.85	15.4	200400
Parsvnath	26.47	23.04	14.89	11274937
J G Chemicals	521.5	459.4	13.52	2592888
Lokesh Machines	237.12	211.47	12.13	520537
Hariom Pipe	455.8	409.3	11.36	10924304
MSP Steel	30.22	27.15	11.31	4374910
Mohit Ind	31.81	28.81	10.41	184255
Times Guaranty	188	170.5	10.26	118232
Sri Adhikari	1291.25	1171.25	10.25	2641
Mask Investment	175.29	159	10.25	398
Swan Defence	277.79	251.98	10.24	564
On Door Concept	160.95	146	10.24	10800
TARACHAND	76.34	69.25	10.24	805113
ASL Industries	46.3	42	10.24	4000
Dhruv Consultan	69.89	63.4	10.24	23621
Sumeet Ind	115.69	104.95	10.23	6394

\* the % price rise of the last 3 days



Nifty 50 stocks - Summary Details											
Symbol	LTP	Chng	% Chng	Volume (lacs)	Turnover (crs.)	52w High	Diff with 52w H	52w Low	Diff with 52w L	365 days % chng	30 days % chng
NIFTY 50	25522.50	61.20	0.24%	2103.87	21945.45	26277.35	2.87%	21743.65	17.38%	1.83%	4.68%
ADANIENT	2588.00	11.90	0.46%	3.58	92.48	3258.00	20.56%	2025.00	27.80%	1.65%	-18.16%
ADANIPTS	1448.30	12.70	0.88%	8.25	118.79	1604.95	9.76%	995.65	45.46%	-2.45%	-4.32%
APOLLOHOSP	7555.50	-60.50	-0.79%	4.82	365.59	7635.00	1.04%	6001.00	25.90%	9.70%	20.34%
ASIANPAINT	2487.90	45.10	1.85%	11.36	280.54	3394.90	26.72%	2124.75	17.09%	8.80%	-16.80%
AXISBANK	1164.90	-10.20	-0.87%	99.73	1163.87	1339.65	13.04%	933.50	24.79%	-1.63%	-8.70%
BAJAJ-AUTO	8342.00	-121.50	-1.44%	2.54	211.33	12774.00	34.70%	7089.35	17.67%	-2.01%	-12.17%
BAJAJFINSV	2014.00	7.60	0.38%	9.87	198.18	2135.00	5.67%	1523.25	32.22%	0.82%	27.02%
BAJFINANCE	928.30	3.65	0.39%	38.51	356.56	978.80	5.16%	642.50	44.48%	-90.13%	-87.05%
BEL	422.40	5.30	1.27%	159.70	672.67	436.00	3.12%	240.25	75.82%	6.76%	28.71%
BHARTIARTL	2033.00	-0.90	-0.04%	36.25	734.10	2045.80	0.63%	1421.45	43.02%	8.75%	42.26%
CIPLA	1490.00	-20.50	-1.36%	21.98	327.25	1702.05	12.46%	1335.00	11.61%	0.42%	0.04%
COALINDIA	382.90	-1.35	-0.35%	52.31	200.43	543.55	29.56%	349.25	9.63%	-3.68%	-21.82%
DRREDDY	1284.00	-26.50	-2.02%	16.03	205.54	1421.49	9.67%	1020.00	25.88%	-0.79%	-79.90%
EICHERMOT	5671.00	-11.50	-0.20%	1.81	102.42	5906.50	3.99%	4508.75	25.78%	5.35%	19.95%
GRASIM	2814.60	35.50	1.28%	8.46	238.36	2896.00	2.81%	2276.95	23.61%	7.95%	1.13%
HCLTECH	1700.10	-10.30	-0.60%	21.39	364.63	2012.20	15.51%	1302.75	30.50%	4.44%	12.57%
HDFCBANK	1999.40	12.00	0.60%	76.12	1516.92	2027.10	1.37%	1588.05	25.90%	0.44%	20.59%
HDFCLIFE	794.35	4.90	0.62%	50.34	398.00	820.75	3.22%	584.30	35.95%	4.55%	29.98%
HEROMOTOCO	4297.00	-10.00	-0.23%	4.68	200.46	6246.25	31.21%	3344.00	28.50%	0.91%	-22.51%
HINDALCO	687.30	-4.80	-0.69%	39.23	269.64	772.65	11.05%	546.45	25.78%	6.45%	-1.01%
HINDUNILVR	2400.00	-10.40	-0.43%	14.71	352.83	3035.00	20.92%	2136.00	12.36%	0.86%	-5.36%
ICICIBANK	1443.00	7.30	0.51%	53.15	765.72	1471.60	1.94%	1153.00	25.15%	-1.64%	16.40%
INDUSINDBK	851.80	-2.65	-0.31%	23.44	200.31	1498.00	43.14%	606.00	40.56%	3.84%	-40.43%
INFY	1638.50	11.50	0.71%	45.90	750.95	2006.45	18.34%	1307.00	25.36%	4.04%	-1.24%
ITC	418.00	1.85	0.44%	68.07	283.47	528.50	20.91%	390.15	7.14%	-1.16%	-4.04%
JIOFIN	328.80	0.75	0.23%	139.47	456.86	363.00	9.42%	198.65	65.52%	11.58%	-7.00%
JSWSTEEL	1042.80	3.00	0.29%	8.28	86.47	1074.90	2.99%	854.15	22.09%	3.75%	9.28%
KOTAKBANK	2223.90	74.10	3.45%	75.26	1672.97	2301.90	3.39%	1679.05	32.45%	3.68%	16.04%
LT	3607.00	25.60	0.71%	15.13	543.33	3963.50	8.99%	2965.30	21.64%	-2.05%	-1.26%
M&M	3163.00	2.80	0.09%	15.13	475.91	3270.95	3.30%	2425.00	30.43%	1.73%	9.71%
MARUTI	12435.00	-85.00	-0.68%	2.41	299.23	13680.00	9.10%	10725.00	15.94%	0.47%	3.44%
NESTLEIND	2419.00	-3.10	-0.13%	3.56	86.06	2778.00	12.92%	2110.00	14.64%	0.20%	-5.91%
NTPC	342.95	5.50	1.63%	120.92	412.98	448.45	23.53%	292.80	17.13%	1.38%	-11.15%
ONGC	243.35	1.83	0.76%	75.36	182.62	345.00	29.46%	205.00	18.71%	0.61%	-16.20%
POWERGRID	298.25	2.35	0.79%	62.54	185.83	366.25	18.57%	247.30	20.60%	0.03%	-12.82%
RELIANCE	1538.00	-3.50	-0.23%	71.71	1101.59	1608.80	4.40%	1114.85	37.96%	6.79%	-51.48%
SBILIFE	1816.20	7.90	0.44%	6.17	111.76	1936.00	6.19%	1372.55	32.32%	1.56%	18.24%
SBIN	812.25	5.40	0.67%	59.33	480.26	899.00	9.65%	680.00	19.45%	-0.76%	-6.15%
SHRIRAMFIN	671.00	-0.30	-0.04%	28.20	189.03	730.45	8.14%	493.35	36.01%	-2.46%	-76.58%
SUNPHARMA	1670.80	-9.10	-0.54%	18.60	309.72	1960.35	14.77%	1549.80	7.81%	0.04%	7.11%
TATACONSUM	1100.00	-1.90	-0.17%	6.06	66.64	1250.10	12.01%	882.90	24.59%	-1.23%	-3.12%
TATAMOTORS	692.90	4.05	0.59%	76.14	526.78	1179.00	41.23%	535.75	29.33%	-3.12%	-30.67%
TATASTEEL	161.90	-0.50	-0.31%	113.94	184.61	175.47	7.73%	122.62	32.03%	3.12%	-7.05%
TCS	3406.00	-5.70	-0.17%	23.25	792.19	4592.25	25.83%	3056.05	11.45%	0.81%	-14.96%
TECHM	1634.00	10.10	0.62%	13.19	215.25	1807.70	9.61%	1209.40	35.11%	3.36%	11.12%
TITAN	3440.00	-215.10	-5.88%	39.52	1372.48	3867.00	11.04%	2925.00	17.61%	2.98%	12.14%
TRENT	5440.00	-59.00	-1.07%	16.99	919.88	8345.00	34.81%	4488.00	21.21%	-4.81%	-2.15%
ULTRACEMCO	12416.00	71.00	0.58%	2.19	272.29	12575.00	1.26%	10047.85	23.57%	9.70%	5.60%
WIPRO	269.75	2.00	0.75%	55.18	148.43	324.60	16.90%	228.00	18.31%	7.71%	-49.96%
ETERNAL	263.65	5.10	1.97%	183.12	481.22	304.70	13.47%	194.80	35.34%	-1.26%	#VALUE!

## Disclaimer / Disclosures

### ANALYST CERTIFICATION

I, Mrs. Vaishali Parekh B.com, Research Analyst, author and the name subscribed to this report, hereby certify that all of the views expressed in this research report accurately reflect our views about the subject issuer(s) or securities. We also certify that no part of our compensation was, is, or will be directly or indirectly related to the specific recommendation(s) or view(s) in this report.

Terms & conditions and other disclosures:

Prabhudas Lilladher Pvt. Ltd, Mumbai, India (hereinafter referred to as "PL") is engaged in the business of Stock Broking, Portfolio Manager, Depository Participant and distribution for third party financial products. PL is a subsidiary of Prabhudas Lilladher Advisory Services Pvt Ltd. which has its various subsidiaries engaged in business of commodity broking, investment banking, financial services (margin funding) and distribution of third party financial/other products, details in respect of which are available at [www.plindia.com](http://www.plindia.com)

This document has been prepared by the Research Division of PL and is meant for use by the recipient only as information and is not for circulation. This document is not to be reported or copied or made available to others without prior permission of PL. It should not be considered or taken as an offer to sell or a solicitation to buy or sell any security.

The information contained in this report has been obtained from sources that are considered to be reliable. However, PL has not independently verified the accuracy or completeness of the same. Neither PL nor any of its affiliates, its directors or its employees accepts any responsibility of whatsoever nature for the information, statements and opinion given, made available or expressed herein or for any omission therein.

Recipients of this report should be aware that past performance is not necessarily a guide to future performance and value of investments can go down as well. The suitability or otherwise of any investments will depend upon the recipient's particular circumstances and, in case of doubt, advice should be sought from an independent expert/advisor.

Either PL or its affiliates or its directors or its employees or its representatives or its clients or their relatives may have position(s), make market, act as principal or engage in transactions of securities of companies referred to in this report and they may have used the research material prior to publication.

PL may from time to time solicit or perform investment banking or other services for any company mentioned in this document.

PL is registered as Research Analyst under Securities and Exchange Board of India (Research Analysts) Regulations, 2014 PL submits that no material disciplinary action has been taken on us by any Regulatory Authority impacting Equity Research Analysis activities.

PL or its research analysts or its associates or his relatives do not have any financial interest in the subject company.

PL or its research analysts or its associates or his relatives do not have actual/beneficial ownership of one per cent or more securities of the subject company at the end of the month immediately preceding the date of publication of the research report.

PL or its research analysts or its associates or his relatives do not have any material conflict of interest at the time of publication of the research report.

PL or its associates might have received compensation from the subject company in the past twelve months.

PL or its associates might have managed or co-managed public offering of securities for the subject company in the past twelve months or mandated by the subject company for any other assignment in the past twelve months.

PL or its associates might have received any compensation for investment banking or merchant banking or brokerage services from the subject company in the past twelve months.

PL or its associates might have received any compensation for products or services other than investment banking or merchant banking or brokerage services from the subject company in the past twelve months PL or its associates might have received any compensation or other benefits from the subject company or third party in connection with the research report.

PL encourages independence in research report preparation and strives to minimize conflict in preparation of research report. PL or its analysts did not receive any compensation or other benefits from the subject Company or third party in connection with the preparation of the research report. PL or its Research Analysts do not have any material conflict of interest at the time of publication of this report.

It is confirmed that Mrs. Vaishali Parekh B.com, Research Analyst of this report has not received any compensation from the companies mentioned in the report in the preceding twelve months compensation of our Research Analysts is not based on any specific merchant banking, investment banking or brokerage service transactions.

The Research analysts for this report certifies that all of the views expressed in this report accurately reflect his or her personal views about the subject company or companies and its or their securities, and no part of his or her compensation was, is or will be, directly or indirectly related to specific recommendations or views expressed in this report.

The research analysts for this report has not served as an officer, director or employee of the subject company PL or its research analysts have not engaged in market making activity for the subject company

Our sales people, traders, and other professionals or affiliates may provide oral or written market commentary or trading strategies to our clients that reflect opinions that are contrary to the opinions expressed herein, and our proprietary trading and investing businesses may make investment decisions that are inconsistent with the recommendations expressed herein. In reviewing these materials, you should be aware that any or all of the foregoing, among other things, may give rise to real or potential conflicts of interest.

PL and its associates, their directors and employees may (a) from time to time, have a long or short position in, and buy or sell the securities of the subject company or (b) be engaged in any other transaction involving such securities and earn brokerage or other compensation or act as a market maker in the financial instruments of the subject company or act as an advisor or lender/borrower to the subject company or may have any other potential conflict of interests with respect to any recommendation and other related information and opinions.