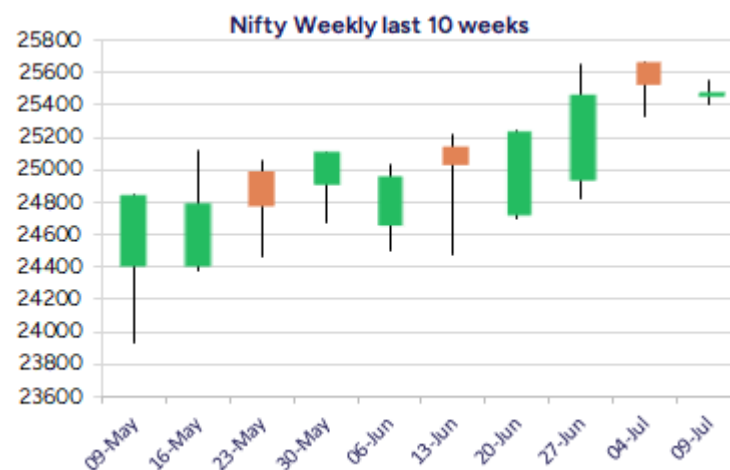
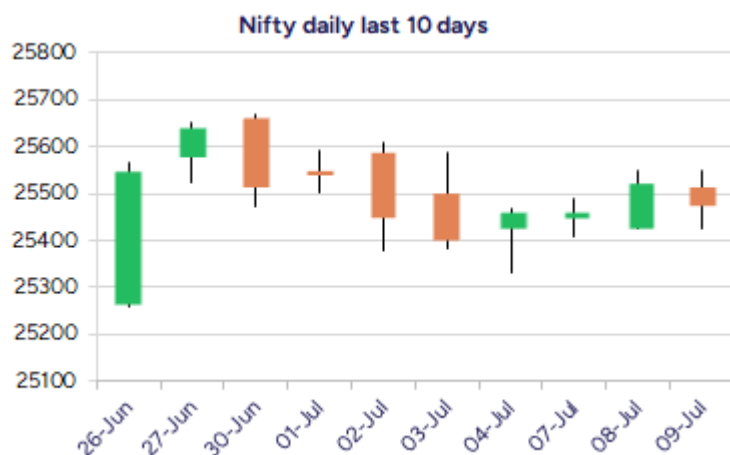


Date: 10th July 2025

* Sensex 83536.08 - 176.43

* Nifty 25476.10 - 46.40

* Bank Nifty 57213.55 - 42.75



*Blue candle → Close rate > Open rate * Red candle → Close rate < Open rate

Market Preview

Nifty finds consolidation near 25500 zone

Nifty once again witnessed a slight volatile session with overall rangebound movement near the 25500 zone with bias and sentiment maintained intact. BankNifty hovered between a narrow range during the intraday session with overall bias maintained positive. The market breadth was overall flat with the advance decline indicating a neutral ratio at close.

Market Forecast

Nifty daily range 25350-25700

Nifty witnessed a volatile session resisting near the 25550 zone and slipping down in the final hours of the trading session to end almost on a flat note near 25470 zone with bias and sentiment maintained intact. With the onset of result season, we can expect volatility to rise further with the index having the important support positioned near the 25250-25300 zone which needs to be sustained, and on the upside, a decisive breach above the 25650 zone shall trigger for fresh upward move having higher targets of 25700 and 26200 levels in the coming days.

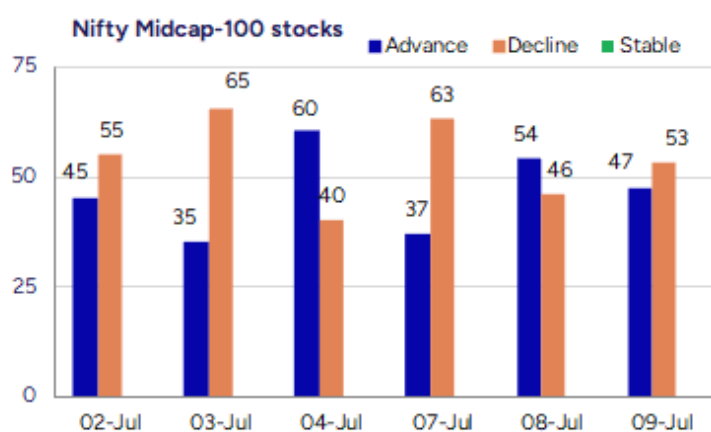
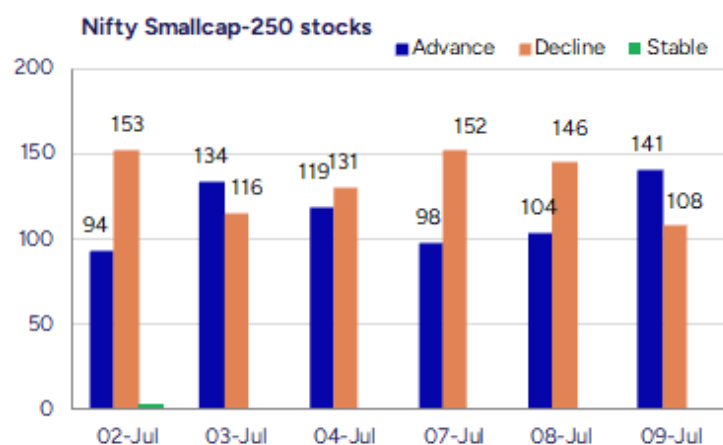
BankNifty, witnessed almost a sluggish session with narrow rangebound movement once again finding resistance near the 57300 zone and closed on a flat note near 57200 level. The index has maintained the overall undertone strong and can expect for further rise once a decisive breach above the resistance level of 57600 is confirmed, thereafter, expecting for fresh targets of 58500 and 60000 levels in the coming days. As mentioned earlier, the index continue to have the 56000 zone as the important and crucial support, which needs to be sustained as of now.

The support for the day is seen at 25350 levels while the resistance is seen at 25700 levels. BankNifty would have the daily range of 56800-58000 levels.

Indices	Period	Closing	% Chng	Trend	Reversal	2 Sup	1 Sup	Pivot	1 Res	2 Res
Nifty	Daily	25476.10	-0.18%	-6	25510.40	25359	25417	25483	25542	25607
	Weekly	25461.00	-0.69%	3	25328.50	25158	25310	25486	25637	25814
	Monthly	25517.05	3.10%	2	25312.05	24028	24772	25217	25962	26407
Bank Nifty	Daily	57213.55	-0.07%	-6	57202.10	56928	57071	57181	57324	57433
	Weekly	57031.90	-0.72%	2	57012.35	56111	56571	57086	57546	58061
	Monthly	57312.75	2.80%	3	54910.25	54237	55775	56687	58226	59138
Sensex	Daily	83536.08	-0.21%	-1	83617.90	83167	83352	83567	83751	83966
	Weekly	83432.89	-0.74%	3	83092.35	82443	82938	83511	84006	84580
	Monthly	83606.46	2.65%	2	81262.65	79027	81317	82703	84992	86378

Gainers - Losers (Nifty 500 Stocks)

Gainers				Losers			
Company Name	Last Price	% Gain	Volume	Company Name	Last Price	% Loss	Volume
Prostarm Info	196.87	20	15452754	Nectar Life	16.47	-10.97	29224951
Virinchi	25.53	19.97	2845439	Indifra	19	-9.95	8000
Monolithisch	479	19.05	878000	Cool Caps	80.5	-9.3	527500
Country Club	19.58	17.74	4159902	Lokesh Machines	217.32	-8.35	196757
Forge Auto Intl	100.75	17.15	97200	Chaman Metallic	152.8	-7.59	73500
Influx Health	168.75	16.58	1968000	Pranik Logistic	79.15	-6.61	8000
Arunaya Organic	28.5	15.38	122000	Falcon Technopr	19.85	-6.59	412800



Nifty Daily chart with RSI indicator



BankNifty Daily chart with RSI indicator

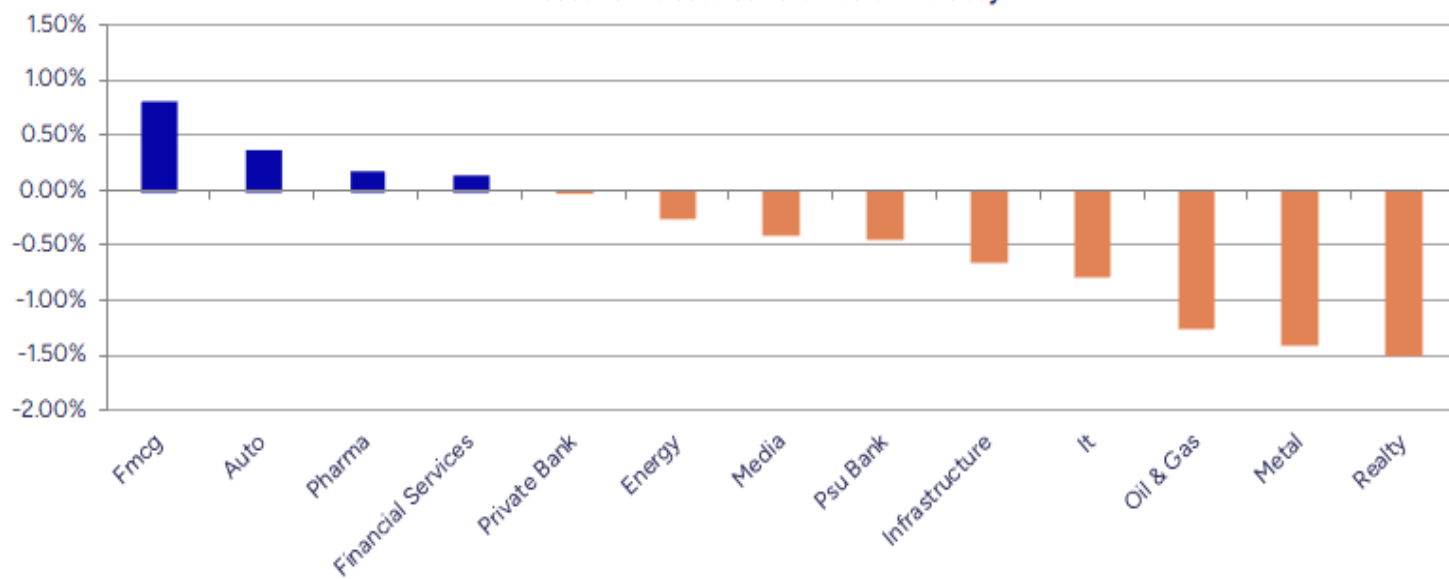


Breakouts - Cross above 200 DMA				Breakdown - Cross below 200 DMA			
Company Name	LCP	Change %	200 DMA	Company Name	LCP	Change %	200 DMA
Metropolis	2057.9	10.10	1869.05	Vibhor Steel	180.53	-5.58	191.2
Country Club	19.58	6.88	18.32	GAIL	185.03	-2.59	189.94
Univastu India	262.03	6.84	245.25	Mask Investment	169.86	-2.56	174.32
Steel Exchange	10.16	4.53	9.72	Shah Alloys	63.25	-2.29	64.73
Omax Autos	104.95	3.16	101.74	Motisons Jewell	22.69	-2.24	23.21
Nandani Creatio	43.02	2.80	41.85	Vedanta	440.75	-2.03	449.86
Metro	1210.8	2.73	1178.62	Lloyds Luxuries	92	-1.79	93.68
Dr Lal PathLab	2963.7	2.67	2886.64	Himatsingka Sei	156.53	-1.68	159.21
Malu Paper	42.82	2.42	41.81	KEI Industries	3694	-1.64	3755.73
Jamna Auto	95.61	2.09	93.65	Vardhman Poly	11.45	-1.55	11.63
Sinclairs Hotel	98.51	1.79	96.78	DCM Financial	6.69	-1.33	6.78
Panacea Biotec	418.8	1.64	412.06	Emami Realty	107.8	-1.27	109.19
Premier Energie	1074.1	1.58	1057.42	CSL Fin	314.3	-1.15	317.97
Dabur India	522.15	1.54	514.23	Mohini Health &	58.3	-1.07	58.93
Infinium Pharma	295	1.40	290.94	HT Media	20.88	-0.90	21.07
Global Vectra	264.79	1.09	261.93	GMRP&UI	115.29	-0.83	116.25
Coral India Fin	47.02	1.05	46.53	Cubex Tubings	95.81	-0.76	96.54
Arihant Super	407.25	0.91	403.58	Oberoi Realty	1831.1	-0.75	1844.87

* Stocks crossing above its Simple Moving Average (200DMA)

* Stocks crossing below its Simple Moving Average (200DMA)

Sectoral Indices - Gainers Losers for the day



Stocks witnessing a volume surge as compared to their 5 day average volume

Watch out for the stocks that have seen a huge spurt in its share price over the last three days

Volume Shockers - NSE					
Company name	LCP	% Chg	Volume	Avg Vol *	% Chg
Country Club	19.58	17.74	24345	16987	4159902
Khandwala Sec	24.18	1.6	4730	10567	504585
Cool Caps	80.5	-9.3	8400	6180	527500
Synergy Green I	547.95	5.31	15196	5129	794619
KCK Industries	44	-0.34	13600	4330	602500
Munjal Showa	149.29	7.74	74318	3778	2881832
Falcon Technopr	19.85	-6.59	11280	3560	412800
Omax Autos	104.95	13.48	37808	3282	1278592
Visaman Global	54.85	2.14	10800	3233	360000
Akzo Nobel	3648.8	-0.97	73385	2953	2240128
Sterling Wilson	331.45	8.55	581779	2545	15388250
Syrma SGS	649.65	5.61	501243	2452	12791171
Virinchi	25.53	19.97	114714	2380	2845439
Dhunseri Tea	203.32	5.25	2415	2078	52608
Dynemic Product	342.1	12.05	83918	2059	1811968
Williamson Mago	36.63	4	7976	1906	160002
Forge Auto Intl	100.75	17.15	5280	1741	97200
Religare Enterp	235.25	6.18	528037	1714	9580612
Pentagon Rubber	63.65	4.34	7000	1657	123000
PCBL Chemical	423.7	4.79	617266	1650	10804776

* the Average Volume of last 5 days

Price Shockers - NSE				
Company name	LCP	Prv Close	% Chg	Volume
AKI India	14.69	9.29	58.13	510855
Virinchi	25.53	21.53	18.58	2845439
MSP Steel	32.09	27.15	18.2	5145021
Jaiprakash Pow	22.37	18.95	18.05	414752866
Sambhv Steel	120.78	102.43	17.91	73404773
Force Motors	16719	14342	16.57	605650
Thejo Engg	2186.6	1877.6	16.46	43328
Jainik Power	78.95	67.85	16.36	68400
Omax Autos	104.95	90.26	16.28	1278592
Country Club	19.58	16.84	16.27	4159902
Metropolis	2057.9	1773.3	16.05	1497046
Vibhor Steel	180.53	155.91	15.79	93310
Sri Adhikari	1355.8	1171.25	15.76	4527
Dhruv Consultan	73.38	63.4	15.74	66822
Sumeet Ind	121.47	104.95	15.74	9169
GSM Foils	186.6	161.25	15.72	19000
On Door Concept	168.95	146	15.72	56700
ASL Industries	48.6	42	15.71	4000
Pattech Fitwell	124.65	107.75	15.68	7500
NDL Ventures	74.53	64.44	15.66	193594

* the % price rise of the last 3 days

Nifty 50 stocks - Summary Details											
Symbol	LTP	Chng	% Chng	Volume (lacs)	Turnover (crs.)	52w High	Diff with 52w H	52w Low	Diff with 52w L	365 days % chng	30 days % chng
NIFTY 50	25476.10	-46.40	-0.18%	2390.18	20546.03	26277.35	3.05%	21743.65	17.17%	2.08%	4.94%
ADANIENT	2582.30	-9.00	-0.35%	3.97	102.73	3258.00	20.74%	2025.00	27.52%	2.25%	-16.77%
ADANIPTS	1444.00	-4.50	-0.31%	10.09	145.99	1604.95	10.03%	995.65	45.03%	-1.58%	-1.82%
APOLLOHOSP	7450.50	-114.50	-1.51%	2.67	200.30	7635.00	2.42%	6001.00	24.15%	8.97%	19.75%
ASIANPAINT	2497.30	12.70	0.51%	23.29	584.71	3394.90	26.44%	2124.75	17.53%	10.66%	-14.27%
AXISBANK	1165.00	-0.40	-0.03%	86.75	1011.44	1339.65	13.04%	933.50	24.80%	-2.44%	-9.51%
BAJAJ-AUTO	8357.50	18.00	0.22%	1.57	131.49	12774.00	34.57%	7089.35	17.89%	-3.44%	-12.49%
BAJAJFINSV	2023.90	5.60	0.28%	11.62	235.44	2135.00	5.20%	1523.25	32.87%	1.42%	28.55%
BAJFINANCE	941.00	13.35	1.44%	53.41	501.21	978.80	3.86%	642.50	46.46%	-90.10%	-86.93%
BEL	418.50	-3.50	-0.83%	149.06	625.19	436.00	4.01%	240.25	74.19%	8.01%	26.12%
BHARTIARTL	2019.20	-10.80	-0.53%	29.38	595.35	2045.80	1.30%	1421.45	42.05%	8.54%	41.45%
CIPLA	1490.50	2.20	0.15%	13.64	203.67	1702.05	12.43%	1335.00	11.65%	-1.06%	0.08%
COALINDIA	387.85	5.00	1.31%	44.97	173.50	543.55	28.65%	349.25	11.05%	-4.04%	-22.39%
DRREDDY	1269.00	-14.80	-1.15%	14.94	190.29	1421.49	10.73%	1020.00	24.41%	-2.81%	-80.35%
EICHERMOT	5692.00	12.50	0.22%	1.78	101.33	5906.50	3.63%	4508.75	26.24%	5.29%	19.46%
GRASIM	2795.10	-25.70	-0.91%	6.59	185.14	2896.00	3.48%	2276.95	22.76%	9.57%	2.87%
HCLTECH	1673.00	-35.10	-2.05%	28.94	486.49	2012.20	16.86%	1302.75	28.42%	4.30%	11.39%
HDFCBANK	2008.50	7.10	0.35%	69.31	1391.05	2027.10	0.92%	1588.05	26.48%	1.15%	22.38%
HDFCLIFE	785.60	-8.55	-1.08%	21.66	170.63	820.75	4.28%	584.30	34.45%	5.17%	27.90%
HEROMOTOCO	4328.00	27.60	0.64%	2.76	119.63	6246.25	30.71%	3344.00	29.43%	0.76%	-21.84%
HINDALCO	673.05	-12.55	-1.83%	67.04	452.88	772.65	12.89%	546.45	23.17%	5.45%	-1.66%
HINDUNILVR	2421.30	28.60	1.20%	17.42	422.17	3035.00	20.22%	2136.00	13.36%	0.12%	-7.52%
ICICIBANK	1430.80	-11.20	-0.78%	88.27	1263.96	1471.60	2.77%	1153.00	24.09%	-1.21%	16.76%
INDUSINDBK	842.00	-8.30	-0.98%	24.06	203.54	1498.00	43.79%	606.00	38.94%	3.34%	-40.87%
INFY	1632.70	-6.00	-0.37%	45.81	747.07	2006.45	18.63%	1307.00	24.92%	4.79%	-1.38%
ITC	419.10	1.90	0.46%	99.30	416.14	528.50	20.70%	390.15	7.42%	-0.91%	-5.95%
JIOFIN	329.80	0.95	0.29%	245.21	814.32	363.00	9.15%	198.65	66.02%	11.85%	-5.58%
JSWSTEEL	1040.40	-4.60	-0.44%	16.67	173.35	1074.90	3.21%	854.15	21.81%	3.99%	11.26%
KOTAKBANK	2225.80	1.30	0.06%	20.21	449.42	2301.90	3.31%	1679.05	32.56%	7.29%	20.04%
LT	3581.00	-25.40	-0.70%	10.08	360.79	3963.50	9.65%	2965.30	20.76%	-1.36%	-0.70%
M&M	3175.00	17.10	0.54%	12.46	395.48	3270.95	2.93%	2425.00	30.93%	1.65%	10.75%
MARUTI	12453.00	39.00	0.31%	1.74	217.40	13680.00	8.97%	10725.00	16.11%	-0.39%	3.25%
NESTLEIND	2429.00	11.10	0.46%	3.95	95.96	2778.00	12.56%	2110.00	15.12%	0.03%	-7.13%
NTPC	344.00	0.80	0.23%	90.80	312.60	448.45	23.29%	292.80	17.49%	3.11%	-9.07%
ONGC	243.16	-0.08	-0.03%	95.88	233.60	345.00	29.52%	205.00	18.61%	1.32%	-18.69%
POWERGRID	299.70	1.95	0.65%	56.51	169.03	366.25	18.17%	247.30	21.19%	0.66%	-12.27%
RELIANCE	1520.50	-17.10	-1.11%	88.71	1359.82	1608.80	5.49%	1114.85	36.39%	6.52%	-51.98%
SBILIFE	1811.00	-5.90	-0.32%	5.98	108.49	1936.00	6.46%	1372.55	31.94%	2.04%	19.93%
SBIN	811.00	-1.65	-0.20%	40.99	332.39	899.00	9.79%	680.00	19.26%	-0.05%	-5.09%
SHRIRAMFIN	680.70	11.75	1.76%	35.60	241.55	730.45	6.81%	493.35	37.98%	-2.80%	-76.18%
SUNPHARMA	1665.10	-7.40	-0.44%	21.79	364.09	1960.35	15.06%	1549.80	7.44%	-0.40%	7.46%
TATACONSUM	1095.60	-4.30	-0.39%	7.52	82.71	1250.10	12.36%	882.90	24.09%	-1.41%	-4.42%
TATAMOTORS	692.30	-0.90	-0.13%	54.78	379.28	1179.00	41.28%	535.75	29.22%	-2.50%	-30.86%
TATASTEEL	159.20	-2.77	-1.71%	298.39	474.88	175.47	9.27%	122.62	29.83%	2.84%	-5.98%
TCS	3386.00	-20.20	-0.59%	20.35	689.23	4592.25	26.27%	3056.05	10.80%	0.65%	-14.70%
TECHM	1612.30	-23.10	-1.41%	11.74	190.41	1807.70	10.81%	1209.40	33.31%	4.09%	11.43%
TITAN	3431.00	-10.30	-0.30%	18.68	641.94	3867.00	11.27%	2925.00	17.30%	-3.33%	9.03%
TRENT	5406.50	-33.50	-0.62%	9.69	526.91	8345.00	35.21%	4488.00	20.47%	-5.83%	-2.76%
ULTRACEMCO	12550.00	105.00	0.84%	3.80	474.04	12580.00	0.24%	10047.85	24.90%	10.59%	7.44%
WIPRO	267.30	-2.35	-0.87%	115.61	308.96	324.60	17.65%	228.00	17.24%	8.47%	-50.18%
ETERNAL	264.00	0.50	0.19%	184.77	488.01	304.70	13.36%	194.80	35.52%	0.63%	#VALUE!

Disclaimer / Disclosures

ANALYST CERTIFICATION

I, Mrs. Vaishali Parekh B.com, Research Analyst, author and the name subscribed to this report, hereby certify that all of the views expressed in this research report accurately reflect our views about the subject issuer(s) or securities. We also certify that no part of our compensation was, is, or will be directly or indirectly related to the specific recommendation(s) or view(s) in this report.

Terms & conditions and other disclosures:

Prabhudas Lilladher Pvt. Ltd, Mumbai, India (hereinafter referred to as "PL") is engaged in the business of Stock Broking, Portfolio Manager, Depository Participant and distribution for third party financial products. PL is a subsidiary of Prabhudas Lilladher Advisory Services Pvt Ltd. which has its various subsidiaries engaged in business of commodity broking, investment banking, financial services (margin funding) and distribution of third party financial/other products, details in respect of which are available at www.plindia.com

This document has been prepared by the Research Division of PL and is meant for use by the recipient only as information and is not for circulation. This document is not to be reported or copied or made available to others without prior permission of PL. It should not be considered or taken as an offer to sell or a solicitation to buy or sell any security.

The information contained in this report has been obtained from sources that are considered to be reliable. However, PL has not independently verified the accuracy or completeness of the same. Neither PL nor any of its affiliates, its directors or its employees accepts any responsibility of whatsoever nature for the information, statements and opinion given, made available or expressed herein or for any omission therein.

Recipients of this report should be aware that past performance is not necessarily a guide to future performance and value of investments can go down as well. The suitability or otherwise of any investments will depend upon the recipient's particular circumstances and, in case of doubt, advice should be sought from an independent expert/advisor.

Either PL or its affiliates or its directors or its employees or its representatives or its clients or their relatives may have position(s), make market, act as principal or engage in transactions of securities of companies referred to in this report and they may have used the research material prior to publication.

PL may from time to time solicit or perform investment banking or other services for any company mentioned in this document.

PL is registered as Research Analyst under Securities and Exchange Board of India (Research Analysts) Regulations, 2014 PL submits that no material disciplinary action has been taken on us by any Regulatory Authority impacting Equity Research Analysis activities.

PL or its research analysts or its associates or his relatives do not have any financial interest in the subject company.

PL or its research analysts or its associates or his relatives do not have actual/beneficial ownership of one per cent or more securities of the subject company at the end of the month immediately preceding the date of publication of the research report.

PL or its research analysts or its associates or his relatives do not have any material conflict of interest at the time of publication of the research report.

PL or its associates might have received compensation from the subject company in the past twelve months.

PL or its associates might have managed or co-managed public offering of securities for the subject company in the past twelve months or mandated by the subject company for any other assignment in the past twelve months.

PL or its associates might have received any compensation for investment banking or merchant banking or brokerage services from the subject company in the past twelve months.

PL or its associates might have received any compensation for products or services other than investment banking or merchant banking or brokerage services from the subject company in the past twelve months PL or its associates might have received any compensation or other benefits from the subject company or third party in connection with the research report.

PL encourages independence in research report preparation and strives to minimize conflict in preparation of research report. PL or its analysts did not receive any compensation or other benefits from the subject Company or third party in connection with the preparation of the research report. PL or its Research Analysts do not have any material conflict of interest at the time of publication of this report.

It is confirmed that Mrs.Vaishali Parekh B.com, Research Analyst of this report has not received any compensation from the companies mentioned in the report in the preceding twelve months compensation of our Research Analysts is not based on any specific merchant banking, investment banking or brokerage service transactions.

The Research analysts for this report certifies that all of the views expressed in this report accurately reflect his or her personal views about the subject company or companies and its or their securities, and no part of his or her compensation was, is or will be, directly or indirectly related to specific recommendations or views expressed in this report.

The research analysts for this report has not served as an officer, director or employee of the subject company PL or its research analysts have not engaged in market making activity for the subject company

Our sales people, traders, and other professionals or affiliates may provide oral or written market commentary or trading strategies to our clients that reflect opinions that are contrary to the opinions expressed herein, and our proprietary trading and investing businesses may make investment decisions that are inconsistent with the recommendations expressed herein. In reviewing these materials, you should be aware that any or all of the foregoing, among other things, may give rise to real or potential conflicts of interest.

PL and its associates, their directors and employees may (a) from time to time, have a long or short position in, and buy or sell the securities of the subject company or (b) be engaged in any other transaction involving such securities and earn brokerage or other compensation or act as a market maker in the financial instruments of the subject company or act as an advisor or lender/borrower to the subject company or may have any other potential conflict of interests with respect to any recommendation and other related information and opinions.