

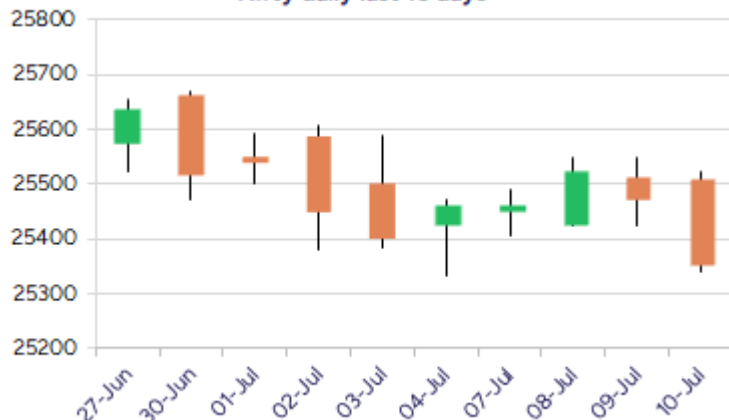
Date: 11th July 2025

* Sensex 83190.28 - 345.80

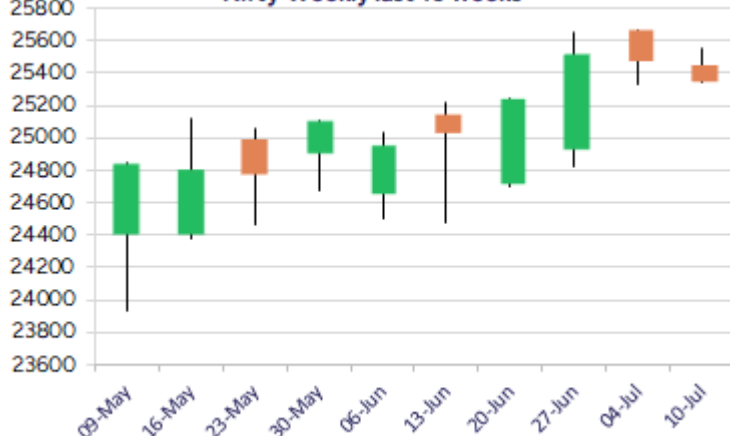
* Nifty 25355.25 - 120.85

* Bank Nifty 56956.00 - 257.55

Nifty daily last 10 days



Nifty Weekly last 10 weeks



*Blue candle → Close rate > Open rate * Red candle → Close rate < Open rate

Market Preview

Nifty slips below 25400 zone

Nifty overall witnessed a sluggish session with some profit booking dragging the index to close below the 25400 level with overall bias maintained intact. BankNifty shed some gains with overall consolidation visible and ended the session just below the 57000 mark. The market breadth was slightly on the weaker side with the advance decline indicating a ratio of 3:4 at close.

Market Forecast

Nifty daily range 25200-25500

Nifty witnessed some profit booking during the session to slip gradually as the day progressed and closed in the red near 25350 zone with overall bias and sentiment still maintained intact. Volatility can be expected in the coming sessions with the index having the important support positioned near the 25250-25300 zone which needs to be sustained. On the upside, a decisive breach is necessary above the 25650 zone, which shall trigger for fresh upward move having higher targets of 25700 and 26200 levels in the coming days.

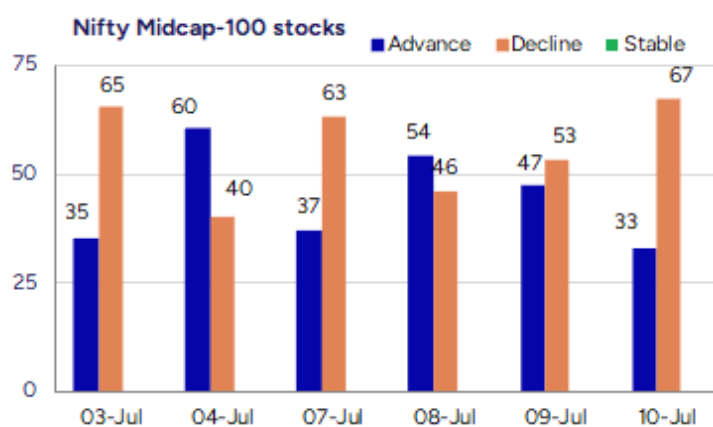
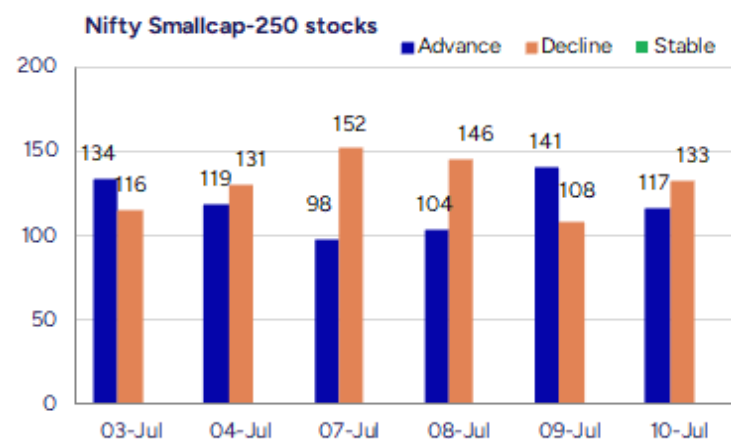
BankNifty, erased some gains as the day proceeded further and ended the session just below the 57000 zone with consolidation visible near the 57000 zone with bias overall maintained positive. The index would need to have a decisive breach above the resistance level of 57600 which when confirmed, shall trigger for further rise, thereafter, expecting for fresh targets of 58500 and 60000 levels in the coming days. As mentioned earlier, the index would continue to have the 56000 zone as the important and crucial support, which needs to be sustained as of now.

The support for the day is seen at 25200 levels while the resistance is seen at 25500 levels. BankNifty would have the daily range of 56500-57600 levels.

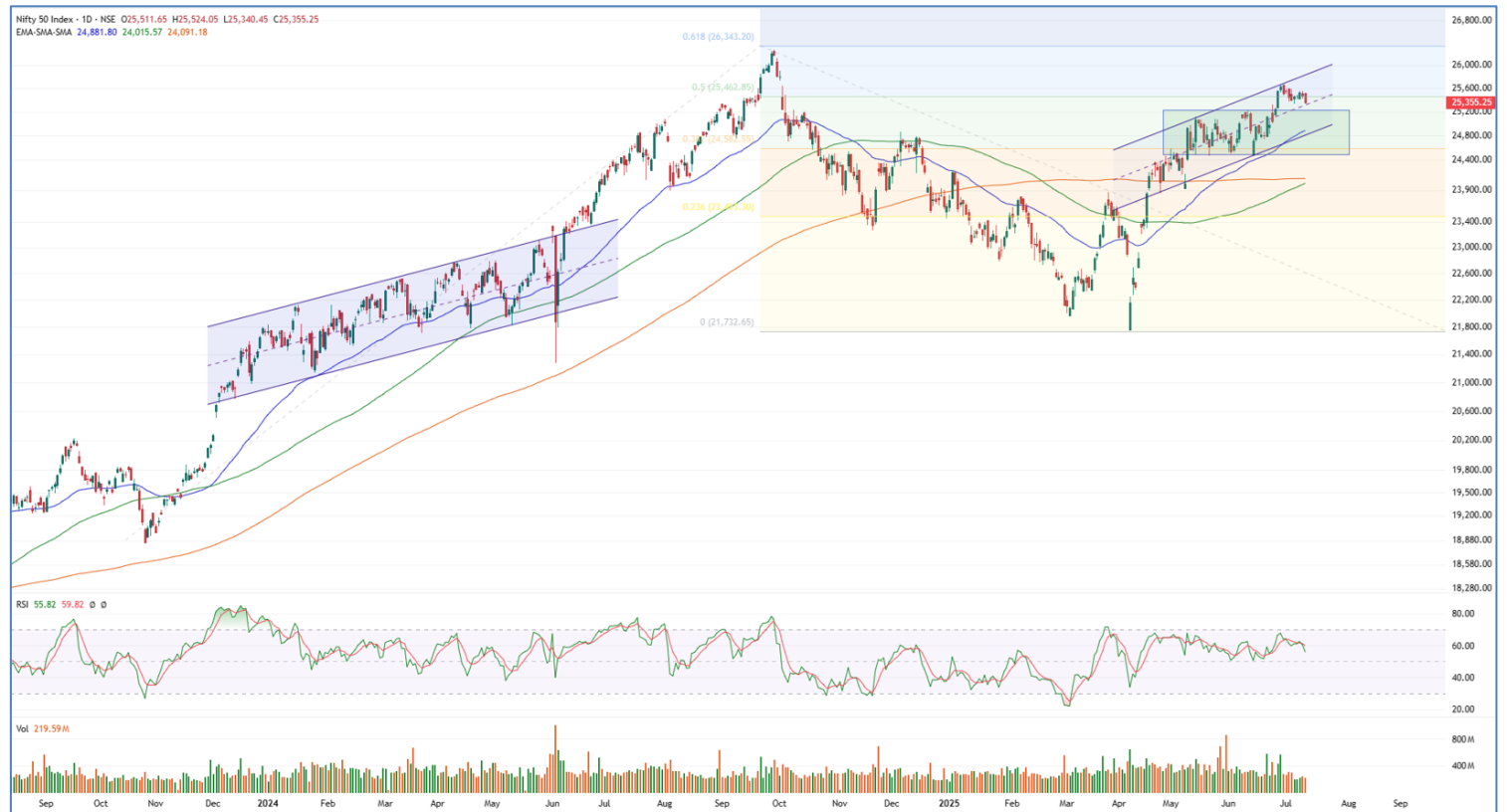
Indices	Period	Closing	% Chng	Trend	Reversal	2 Sup	1 Sup	Pivot	1 Res	2 Res
Nifty	Daily	25355.25	-0.47%	-7	25516.95	25223	25289	25407	25473	25590
	Weekly	25461.00	-0.69%	3	25328.50	25158	25310	25486	25637	25814
	Monthly	25517.05	3.10%	2	25312.05	24028	24772	25217	25962	26407
Bank Nifty	Daily	56956.00	-0.45%	-7	57166.10	56592	56774	57069	57251	57546
	Weekly	57031.90	-0.72%	2	57012.35	56111	56571	57086	57546	58061
	Monthly	57312.75	2.80%	3	54910.25	54237	55775	56687	58226	59138
Sensex	Daily	83190.28	-0.41%	-2	83622.75	82749	82969	83356	83577	83963
	Weekly	83432.89	-0.74%	3	83092.35	82443	82938	83511	84006	84580
	Monthly	83606.46	2.65%	2	81262.65	79027	81317	82703	84992	86378

Gainers - Losers (Nifty 500 Stocks)

Gainers				Losers			
Company Name	Last Price	% Gain	Volume	Company Name	Last Price	% Loss	Volume
Peninsula Land	43.32	20	7091932	Ind-Swift Labs	105.64	-9.5	832961
Soma Textile	53.89	20	131063	Eimco Elecon	2492.1	-9.47	158679
Sacheerome	189.6	20	990000	Shanti Overseas	11.88	-5.04	63361
Forge Auto Intl	120.9	20	307200	Mahalaxmi Fabri	25.48	-5.03	132313
DCM	126.7	19.99	1328840	Visa Steel	34.33	-5.01	5271
Nectar Life	19.46	18.15	26382368				
Mamata Machiner	483.75	17.14	15380453				



Nifty Daily chart with RSI indicator



BankNifty Daily chart with RSI indicator



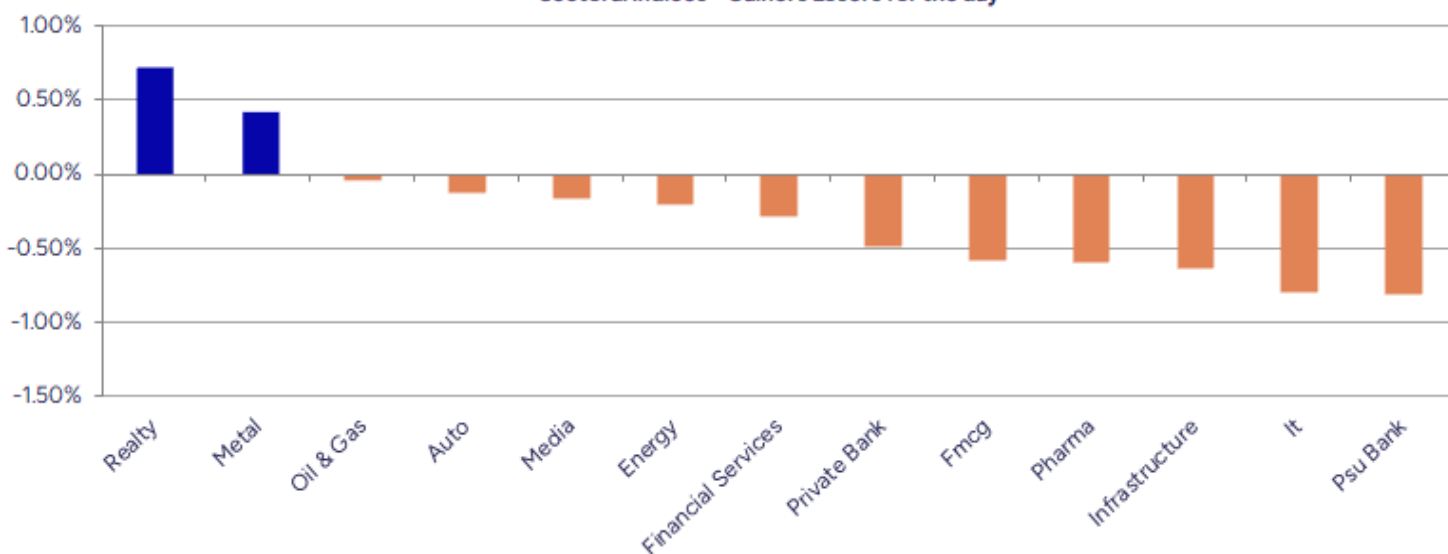
Breakouts - Cross above 200 DMA			
Company Name	LCP	Change %	200 DMA
Peninsula Land	43.32	16.58	37.16
Virinchi	28.88	8.82	26.54
Sree Rayalaseem	687.3	6.65	644.43
Nila Spaces	13.86	6.45	13.02
Airo Lam	117.51	4.06	112.92
Muthoot Microfi	170.43	3.76	164.26
Ducol Organics	126.8	3.74	122.23
BF Utilities	851.95	2.90	827.95
Campus	287.55	2.89	279.46
Lloyds Luxuries	96.15	2.70	93.62
Fino Payments	305.65	2.65	297.75
Reliance Chemo	196.45	2.55	191.57
Emkay Global	256.12	2.47	249.95
J Kumar Infra	733.65	2.23	717.65
Damodar Ind	39	1.88	38.28
Eveready Ind	358.9	1.60	353.26
Galaxy Surfacta	2543.9	1.40	2508.83
Religare Enterp	251.01	1.38	247.6

* Stocks crossing above its Simple Moving Average (200DMA)

Breakdown - Cross below 200 DMA			
Company Name	LCP	Change %	200 DMA
Incredible Ind	40.4	-2.46	41.42
Archidply Decor	89.18	-2.12	91.11
Aban Offshore	52.2	-2.01	53.27
Bharat Forge	1234.8	-1.89	1258.58
PG Electroplast	773.35	-1.89	788.28
Infinium Pharma	286.15	-1.82	291.45
Akiko Global	78.75	-1.50	79.95
Astec Life	898.3	-1.48	911.79
GVP Infotech	10.66	-1.39	10.81
Orient Abrasive	41.01	-1.30	41.55
Panacea Biotech	408	-1.07	412.42
Aarti Ind	448	-0.92	452.16
Tech Mahindra	1600.1	-0.84	1613.66
Vijaya Diagnost	1009.05	-0.83	1017.54
Vardhman Acryli	48.68	-0.63	48.99
MOTHERSON	153.53	-0.63	154.5
Heidelberg Cem	207.58	-0.63	208.89
Rashtriya Chem	153.65	-0.62	154.61

* Stocks crossing below its Simple Moving Average (200DMA)

Sectoral Indices - Gainers Losers for the day



Stocks witnessing a volume surge as compared to their 5 day average volume

Watch out for the stocks that have seen a huge spurt in its share price over the last three days

Volume Shockers - NSE					
Company name	LCP	% Chg	Volume	Avg Vol *	% Chg
DCM	126.7	19.99	27113	4801	1328840
Reliance Chemo	196.45	9.53	2755	4469	125874
Cool Caps	79.9	-0.75	8400	4364	375000
Mamata Machiner	483.75	17.14	363356	4133	15380453
Virinchi	28.88	13.12	114714	3983	4683753
Campus	287.55	6.22	357598	3576	13145187
BEW Engineering	159.15	-1.94	1125	3367	39000
Falcon Technopr	18.95	-4.53	11280	2943	343200
Sree Rayalaseem	687.3	8.2	11496	1905	230475
On Door Concept	177.35	4.97	3360	1820	64500
Airo Lam	117.51	7.37	7302	1775	136911
Transport Corp	1257.2	7.43	20167	1675	357953
SPML Infra	273.78	8.76	336962	1636	5851153
Kirloskar Oil	918.1	10.37	238370	1593	4034832
KCK Industries	44.35	0.8	13600	1499	217500
Lloyds Steels	81.78	6.47	2881343	1452	44726313
UTI	1394.4	3.73	212098	1255	2873056
Visaman Global	56.65	3.28	10800	1233	144000
Flair Writing	309.2	10	97490	1230	1297030
Forge Auto Intl	120.9	20	24480	1155	307200

* the Average Volume of last 5 days

Price Shockers - NSE					
Company name	LCP	Prv Close	% Chg	Volume	
Forge Auto Intl	120.9	86	40.58	307200	
AKI India	15.42	11.14	38.42	963384	
Virinchi	28.88	21.5	34.33	4683753	
Sambhv Steel	126.93	99.39	27.71	47870512	
Peninsula Land	43.32	34.71	24.81	7091932	
Soma Textile	53.89	45.26	19.07	131063	
DCM	126.7	107.41	17.96	1328840	
Country Club	19.77	16.8	17.68	1234250	
MSP Steel	32.26	27.48	17.39	1552554	
Nila Spaces	13.86	11.86	16.86	2643273	
Gabriel India	1076	921.4	16.78	1140185	
Rajoo Engineers	124.62	106.88	16.6	1681865	
Sri Adhikari	1423.55	1229.8	15.75	4532	
Sumeet Ind	127.54	110.19	15.75	5379	
Pattech Fitwell	130.85	113.1	15.69	3000	
On Door Concept	177.35	153.3	15.69	64500	
Tamil Telecom	24.44	21.13	15.66	11603	
ASL Industries	51	44.1	15.65	30000	
SPML Infra	273.78	236.76	15.64	5851153	
Shri Hare-Krish	76.2	65.9	15.63	172000	

* the % price rise of the last 3 days

Nifty 50 stocks - Summary Details											
Symbol	LTP	Chng	% Chng	Volume (lacs)	Turnover (crs.)	52w High	Diff with 52w H	52w Low	Diff with 52w L	365 days % chng	30 days % chng
NIFTY 50	25355.25	-120.85	-0.47%	2195.89	21433.64	26277.35	3.51%	21743.65	16.61%	1.49%	4.27%
ADANIENT	2581.00	-2.00	-0.08%	3.07	79.28	3258.00	20.78%	2025.00	27.46%	0.03%	-16.97%
ADANIPTS	1442.60	-0.40	-0.03%	10.35	149.40	1604.95	10.12%	995.65	44.89%	-1.64%	-2.37%
APOLLOHOSP	7353.00	-116.00	-1.55%	3.85	284.35	7635.00	3.69%	6001.00	22.53%	7.75%	18.17%
ASIANPAINT	2447.50	-51.40	-2.06%	9.33	230.83	3394.90	27.91%	2124.75	15.19%	11.17%	-13.98%
AXISBANK	1165.30	0.60	0.05%	43.39	506.79	1339.65	13.01%	933.50	24.83%	-4.52%	-9.67%
BAJAJ-AUTO	8271.50	-89.50	-1.07%	2.29	190.87	12774.00	35.25%	7089.35	16.68%	-3.24%	-12.30%
BAJAJFINSV	2037.30	10.90	0.54%	12.30	250.54	2135.00	4.58%	1523.25	33.75%	0.45%	28.12%
BAJFINANCE	946.85	6.25	0.66%	54.08	511.99	978.80	3.26%	642.50	47.37%	-90.21%	-86.69%
BEL	413.35	-4.30	-1.03%	179.12	742.51	436.00	5.19%	240.25	72.05%	6.42%	24.75%
BHARTIARTL	1964.00	-55.70	-2.76%	56.96	1128.47	2045.80	4.00%	1421.45	38.17%	8.29%	40.69%
CIPLA	1477.20	-14.50	-0.97%	21.78	320.98	1702.05	13.21%	1335.00	10.65%	-0.99%	-1.35%
COALINDIA	383.95	-3.50	-0.90%	46.67	179.46	543.55	29.36%	349.25	9.94%	-3.38%	-21.54%
DRREDDY	1261.10	-0.30	-0.02%	12.45	157.12	1421.49	11.28%	1020.00	23.64%	-3.77%	-80.72%
EICHERMOT	5649.00	-46.00	-0.81%	1.89	107.06	5906.50	4.36%	4508.75	25.29%	5.64%	17.94%
GRASIM	2774.80	-23.10	-0.83%	7.80	217.92	2896.00	4.19%	2276.95	21.86%	7.26%	1.31%
HCLTECH	1660.10	-13.90	-0.83%	27.40	455.35	2012.20	17.50%	1302.75	27.43%	1.56%	9.33%
HDFCBANK	2002.80	-8.40	-0.42%	85.15	1710.30	2027.10	1.20%	1588.05	26.12%	1.63%	22.90%
HDFCLIFE	770.15	-16.15	-2.05%	26.03	201.73	820.75	6.17%	584.30	31.81%	3.41%	26.08%
HEROMOTOCO	4315.80	-17.30	-0.40%	3.69	159.53	6246.25	30.91%	3344.00	29.06%	-0.37%	-22.47%
HINDALCO	675.85	1.90	0.28%	36.41	245.87	772.65	12.53%	546.45	23.68%	3.56%	-4.67%
HINDUNILVR	2407.00	-16.40	-0.68%	10.54	254.34	3035.00	20.69%	2136.00	12.69%	1.26%	-6.44%
ICICIBANK	1424.00	-7.90	-0.55%	77.96	1112.06	1471.60	3.23%	1153.00	23.50%	-0.20%	14.71%
INDUSINDBK	853.90	13.15	1.56%	25.61	217.36	1498.00	43.00%	606.00	40.91%	0.49%	-41.38%
INFY	1618.80	-14.90	-0.91%	53.30	862.15	2006.45	19.32%	1307.00	23.86%	3.87%	-1.42%
ITC	416.65	-2.80	-0.67%	62.20	259.73	528.50	21.16%	390.15	6.79%	-0.85%	-7.32%
JIOFIN	331.85	2.00	0.61%	139.71	463.66	363.00	8.58%	198.65	67.05%	8.41%	-5.72%
JSWSTEEL	1042.90	2.50	0.24%	11.02	114.72	1074.90	2.98%	854.15	22.10%	3.21%	11.24%
KOTAKBANK	2216.90	-12.40	-0.56%	57.22	1263.91	2301.90	3.69%	1679.05	32.03%	4.26%	20.64%
LT	3573.80	-5.90	-0.16%	10.64	380.72	3963.50	9.83%	2965.30	20.52%	-2.70%	-2.36%
M&M	3160.00	-16.30	-0.51%	17.01	537.80	3270.95	3.39%	2425.00	30.31%	2.88%	8.57%
MARUTI	12644.00	174.00	1.40%	2.77	349.32	13680.00	7.57%	10725.00	17.89%	-1.32%	-2.79%
NESTLEIND	2400.10	-27.70	-1.14%	2.85	68.70	2778.00	13.60%	2110.00	13.75%	0.52%	-7.80%
NTPC	341.40	-2.60	-0.76%	64.25	219.93	448.45	23.87%	292.80	16.60%	2.05%	-8.77%
ONGC	243.00	-0.35	-0.14%	80.12	195.00	345.00	29.57%	205.00	18.54%	0.23%	-18.19%
POWERGRID	298.95	-0.70	-0.23%	93.08	279.23	366.25	18.38%	247.30	20.89%	-0.28%	-12.16%
RELIANCE	1515.20	-3.80	-0.25%	100.47	1523.28	1605.85	5.64%	1114.85	35.91%	4.85%	-52.24%
SBILIFE	1810.00	-4.90	-0.27%	11.04	200.16	1936.00	6.51%	1372.55	31.87%	1.35%	19.03%
SBIN	807.55	-3.40	-0.42%	121.78	987.03	899.00	10.17%	680.00	18.76%	-1.11%	-5.85%
SHRIRAMFIN	671.75	-9.30	-1.37%	30.34	205.25	730.45	8.04%	493.35	36.16%	-2.43%	-75.61%
SUNPHARMA	1663.20	-6.20	-0.37%	17.42	289.15	1960.35	15.16%	1549.80	7.32%	-1.48%	5.30%
TATACONSUM	1086.00	-11.90	-1.08%	5.33	58.35	1250.10	13.13%	882.90	23.00%	-2.08%	-3.88%
TATAMOTORS	695.50	2.70	0.39%	77.34	534.66	1179.00	41.01%	535.75	29.82%	-3.48%	-31.74%
TATASTEEL	160.63	1.63	1.03%	175.63	281.77	173.70	7.52%	122.62	31.00%	1.07%	-7.45%
TCS	3395.00	11.20	0.33%	30.35	1025.50	4592.25	26.07%	3056.05	11.09%	-1.11%	-15.10%
TECHM	1602.40	-12.40	-0.77%	16.31	261.37	1807.70	11.36%	1209.40	32.50%	2.26%	10.17%
TITAN	3414.90	-17.20	-0.50%	4.96	170.15	3867.00	11.69%	2925.00	16.75%	-2.88%	6.75%
TRENT	5419.00	11.00	0.20%	9.47	513.29	8345.00	35.06%	4488.00	20.74%	-8.55%	-3.31%
ULTRACEMCO	12490.00	-72.00	-0.57%	2.69	338.77	12667.00	1.40%	10047.85	24.31%	11.56%	7.55%
WIPRO	265.10	-2.70	-1.01%	69.11	183.04	324.60	18.33%	228.00	16.27%	6.57%	-50.50%
ETERNAL	262.35	-2.20	-0.83%	171.35	452.89	304.70	13.90%	194.80	34.68%	3.00%	#VALUE!

Disclaimer / Disclosures

ANALYST CERTIFICATION

I, Mrs. Vaishali Parekh B.com, Research Analyst, author and the name subscribed to this report, hereby certify that all of the views expressed in this research report accurately reflect our views about the subject issuer(s) or securities. We also certify that no part of our compensation was, is, or will be directly or indirectly related to the specific recommendation(s) or view(s) in this report.

Terms & conditions and other disclosures:

Prabhudas Lilladher Pvt. Ltd, Mumbai, India (hereinafter referred to as "PL") is engaged in the business of Stock Broking, Portfolio Manager, Depository Participant and distribution for third party financial products. PL is a subsidiary of Prabhudas Lilladher Advisory Services Pvt Ltd. which has its various subsidiaries engaged in business of commodity broking, investment banking, financial services (margin funding) and distribution of third party financial/other products, details in respect of which are available at www.plindia.com

This document has been prepared by the Research Division of PL and is meant for use by the recipient only as information and is not for circulation. This document is not to be reported or copied or made available to others without prior permission of PL. It should not be considered or taken as an offer to sell or a solicitation to buy or sell any security.

The information contained in this report has been obtained from sources that are considered to be reliable. However, PL has not independently verified the accuracy or completeness of the same. Neither PL nor any of its affiliates, its directors or its employees accepts any responsibility of whatsoever nature for the information, statements and opinion given, made available or expressed herein or for any omission therein.

Recipients of this report should be aware that past performance is not necessarily a guide to future performance and value of investments can go down as well. The suitability or otherwise of any investments will depend upon the recipient's particular circumstances and, in case of doubt, advice should be sought from an independent expert/advisor.

Either PL or its affiliates or its directors or its employees or its representatives or its clients or their relatives may have position(s), make market, act as principal or engage in transactions of securities of companies referred to in this report and they may have used the research material prior to publication.

PL may from time to time solicit or perform investment banking or other services for any company mentioned in this document.

PL is registered as Research Analyst under Securities and Exchange Board of India (Research Analysts) Regulations, 2014 PL submits that no material disciplinary action has been taken on us by any Regulatory Authority impacting Equity Research Analysis activities.

PL or its research analysts or its associates or his relatives do not have any financial interest in the subject company.

PL or its research analysts or its associates or his relatives do not have actual/beneficial ownership of one per cent or more securities of the subject company at the end of the month immediately preceding the date of publication of the research report.

PL or its research analysts or its associates or his relatives do not have any material conflict of interest at the time of publication of the research report.

PL or its associates might have received compensation from the subject company in the past twelve months.

PL or its associates might have managed or co-managed public offering of securities for the subject company in the past twelve months or mandated by the subject company for any other assignment in the past twelve months.

PL or its associates might have received any compensation for investment banking or merchant banking or brokerage services from the subject company in the past twelve months.

PL or its associates might have received any compensation for products or services other than investment banking or merchant banking or brokerage services from the subject company in the past twelve months PL or its associates might have received any compensation or other benefits from the subject company or third party in connection with the research report.

PL encourages independence in research report preparation and strives to minimize conflict in preparation of research report. PL or its analysts did not receive any compensation or other benefits from the subject Company or third party in connection with the preparation of the research report. PL or its Research Analysts do not have any material conflict of interest at the time of publication of this report.

It is confirmed that Mrs.Vaishali Parekh B.com, Research Analyst of this report has not received any compensation from the companies mentioned in the report in the preceding twelve months compensation of our Research Analysts is not based on any specific merchant banking, investment banking or brokerage service transactions.

The Research analysts for this report certifies that all of the views expressed in this report accurately reflect his or her personal views about the subject company or companies and its or their securities, and no part of his or her compensation was, is or will be, directly or indirectly related to specific recommendations or views expressed in this report.

The research analysts for this report has not served as an officer, director or employee of the subject company PL or its research analysts have not engaged in market making activity for the subject company

Our sales people, traders, and other professionals or affiliates may provide oral or written market commentary or trading strategies to our clients that reflect opinions that are contrary to the opinions expressed herein, and our proprietary trading and investing businesses may make investment decisions that are inconsistent with the recommendations expressed herein. In reviewing these materials, you should be aware that any or all of the foregoing, among other things, may give rise to real or potential conflicts of interest.

PL and its associates, their directors and employees may (a) from time to time, have a long or short position in, and buy or sell the securities of the subject company or (b) be engaged in any other transaction involving such securities and earn brokerage or other compensation or act as a market maker in the financial instruments of the subject company or act as an advisor or lender/borrower to the subject company or may have any other potential conflict of interests with respect to any recommendation and other related information and opinions.