

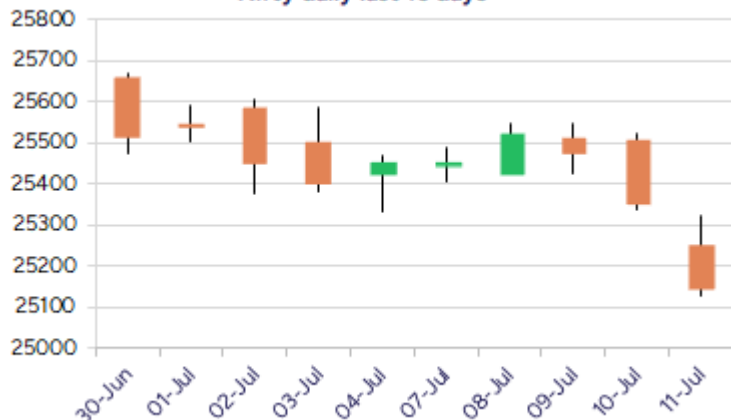
Date: 14<sup>th</sup> July 2025

\* Sensex 83500.47 - 689.81

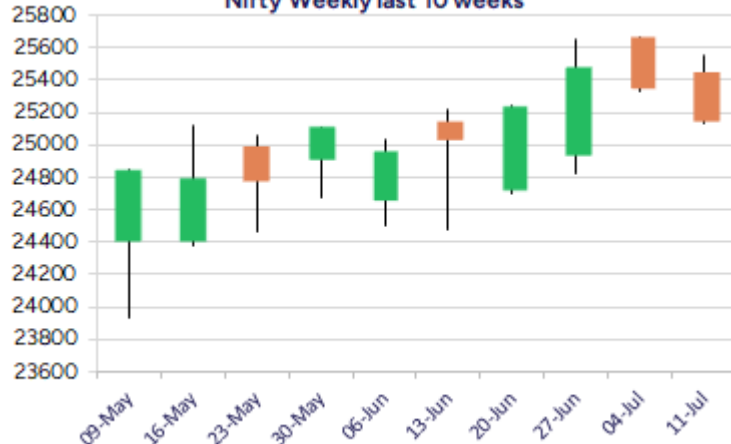
\* Nifty 25149.85 - 205.40

\* Bank Nifty 56754.70 - 201.30

Nifty daily last 10 days



Nifty Weekly last 10 weeks



\*Blue candle → Close rate > Open rate \* Red candle → Close rate < Open rate

## Market Preview

### Nifty slips below important 25250 zone

Nifty plunge below the important support zone of 25250 level with bias slightly turning weak and further slide can be anticipated. BankNifty however has still maintained the positive bias as of now with some profit booking witnessed and would need to sustain the 56000 zone. The market breadth was weak with the advance decline indicating a ratio of 1:2 at close.

## Market Forecast

### Nifty daily range 25000-25300

Nifty amid heavy profit booking plunged below the important support zone of 25250 level with bias slightly becoming weak and has the next crucial support near 24900 zone of the significant 50EMA level which needs to be sustained to maintain the overall trend intact. Volatility in the index shall continue with the ongoing result season and on the upside, as mentioned earlier, a decisive breach above the 25650 zone is necessary to trigger for fresh upward in the coming days.

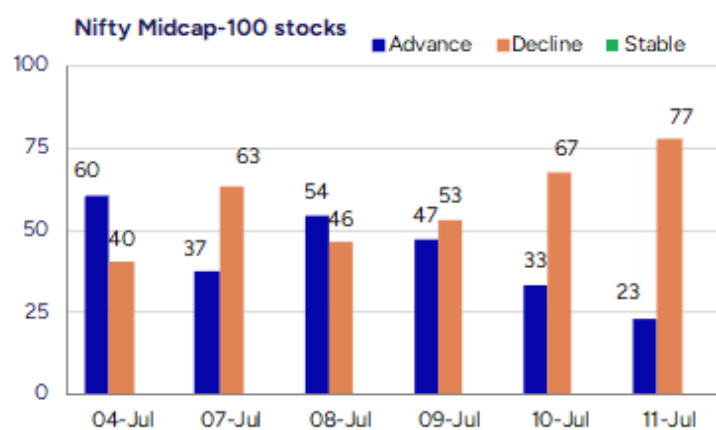
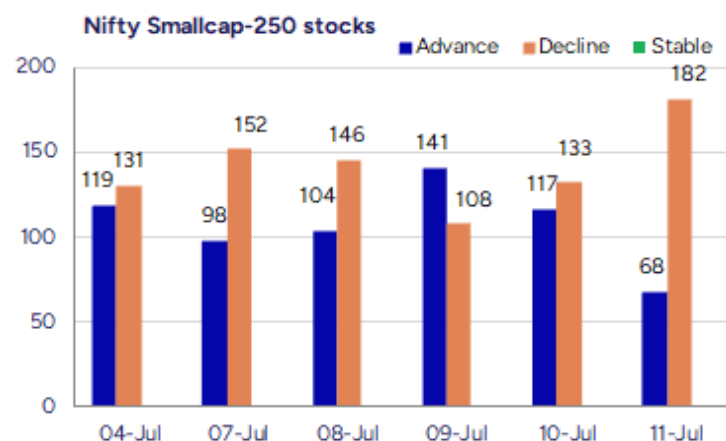
BankNifty, witnessed some erosion in the morning session but consolidated thereafter to end near the 56750 zone with bias still maintained intact having the important and crucial support positioned near the 56000 level which needs to be sustained as of now. At the same time, the index would need to breach above the resistance level of 57600 and thereafter, expect for fresh higher targets of 58500 and 60000 levels in the coming days.

The support for the day is seen at 25000 levels while the resistance is seen at 25300 levels. BankNifty would have the daily range of 56400-57300 levels.

Indices	Period	Closing	% Chng	Trend	Reversal	2 Sup	1 Sup	Pivot	1 Res	2 Res
Nifty	Daily	25149.85	-0.81%	-8	25505.60	25007	25078	25200	25272	25394
	Weekly	25149.85	-1.22%	-1	25391.05	24861	25005	25276	25421	25692
	Monthly	25517.05	3.10%	2	25312.05	24028	24772	25217	25962	26407
Bank Nifty	Daily	56754.70	-0.35%	-8	57133.00	56335	56545	56818	57028	57301
	Weekly	56754.70	-0.49%	-1	57202.00	56174	56464	56902	57192	57630
	Monthly	57312.75	2.80%	3	54910.25	54237	55775	56687	58226	59138
Sensex	Daily	82500.47	-0.83%	-3	83592.40	82063	82282	82661	82880	83260
	Weekly	82500.47	-1.12%	-1	83265.25	81554	82027	82917	83390	84280
	Monthly	83606.46	2.65%	2	81262.65	79027	81317	82703	84992	86378

**Gainers - Losers ( Nifty 500 Stocks )**

Gainers				Losers			
Company Name	Last Price	% Gain	Volume	Company Name	Last Price	% Loss	Volume
Soma Textile	64.66	19.99	1051594	Parsvnath	23.94	-10	5510069
Forge Auto Intl	145.05	19.98	169200	Jindal Worldwid	42.87	-8.04	8991380
Maxposure	67	19.96	187000	PC Jeweller	17.35	-7.37	121615642
Visaman Global	67.95	19.95	135000	Peninsula Land	40.27	-7.04	2881233
Tarmat	62.28	14.78	1298064	Zota Health Car	1203.2	-6.87	116061
Glenmark	2181.1	14.55	15678334	DCM	118.18	-6.72	1034314
Salona Cotspin	282.4	13.73	269917	PTL Enterprises	43.05	-6.62	350008



## Nifty Daily chart with RSI indicator



## BankNifty Daily chart with RSI indicator



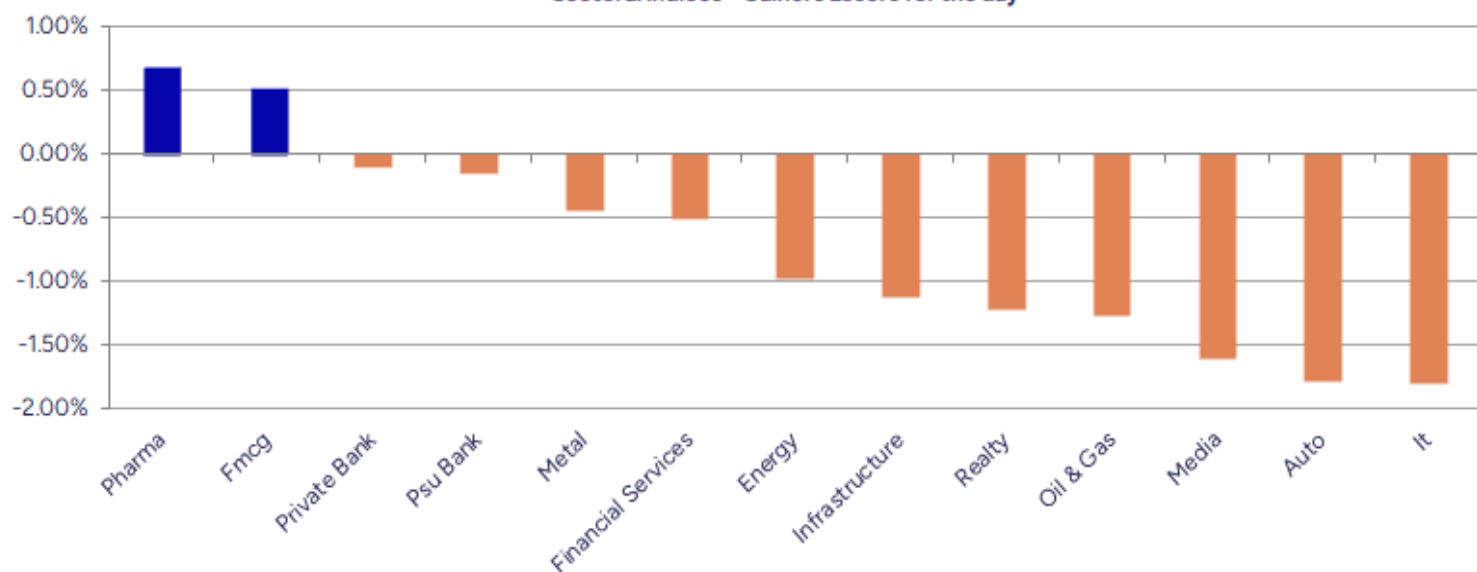
Breakouts - Cross above 200 DMA			
Company Name	LCP	Change %	200 DMA
Salona Cotspin	282.4	5.07	268.78
Atmastco L	232.1	4.52	222.06
HUL	2519.6	4.45	2412.36
Globus Spirits	1008	3.94	969.78
United Nilgiri	459.35	3.08	445.62
Signet Ind	63.66	2.58	62.06
Electro Force	53.75	2.52	52.43
Nandani Creatio	42.86	2.39	41.86
Bansal Wire Ind	405.65	2.35	396.34
Loyal Textiles	341.6	2.13	334.46
Effwa Infra & R	229	1.71	225.16
ABM Inter	60.38	1.46	59.51
Heidelberg Cem	211.78	1.43	208.79
Arihant Capital	88.81	1.14	87.81
Juniper Hotels	314.45	0.86	311.77
SBC Exports	16.16	0.81	16.03
Panacea Biotec	416.15	0.81	412.8
Archidply Decor	91.44	0.58	90.91

\* Stocks crossing above its Simple Moving Average (200DMA)

Breakdown - Cross below 200 DMA			
Company Name	LCP	Change %	200 DMA
Thomas Cook	162.87	-2.79	167.55
CAMS	4069.6	-2.59	4177.96
Apollo Tyres	458.6	-2.35	469.66
Chambal Fert	535.2	-2.29	547.72
Websol Energy	1290.4	-2.18	1319.21
Narmada Agrobias	17.39	-2.03	17.75
Bang Overseas	56.44	-1.98	57.58
DNL	184.19	-1.41	186.82
Suryalakshmi Co	73.96	-1.39	75
Himadri Special	499.2	-1.37	506.12
Gopal Snacks	351.4	-1.25	355.85
Sinclairs Hotel	95.6	-1.18	96.74
Man Infra	182.71	-1.16	184.85
MMTC	67.96	-1.09	68.71
Prataap Snacks	1070.7	-1.06	1082.22
J Kumar Infra	710.1	-1.04	717.56
Shemaroo Ent	136.03	-0.95	137.33
Maral Overseas	73.77	-0.89	74.43

\* Stocks crossing below its Simple Moving Average (200DMA)

Sectoral Indices - Gainers Losers for the day



Stocks witnessing a volume surge as compared to their 5 day average volume

Watch out for the stocks that have seen a huge spurt in its share price over the last three days

Volume Shockers - NSE					
Company name	LCP	% Chg	Volume	Avg Vol *	% Chg
Tarmat	62.28	14.78	13800	9306	1298064
Sumeet Ind	133.91	4.99	7402	6693	502782
KCK Industries	44.55	0.45	13600	5047	700000
Century Extr	24.2	10.25	170653	3292	5789259
Cool Caps	79.1	-1	8400	3174	275000
Netweb	1947.4	7.43	163390	2283	3893986
Anand Rathi	2211.7	4.33	73785	2217	1709685
JagsonpalPharma	242.09	5.08	48534	1678	863078
Soma Textile	64.66	19.99	63467	1557	1051594
Shanti Overseas	11.43	-3.79	46188	1519	747979
Datamatics Glob	732.15	8.77	217284	1489	3453300
Visaman Global	67.95	19.95	10800	1150	135000
Avro India	161.78	-1.4	13258	1099	158998
RPP Infra Proj	141.13	2.61	55468	1068	647761
Krishna Institu	709.85	-0.57	59456	1041	678163
Royal Orchid	395.7	1.28	30106	1019	336805
GPT Healthcare	175.83	7.89	344930	981	3727099
Elecon Eng	619.3	-4.53	555646	966	5924836
Tata Elxsi	6066	-1.16	152400	936	1578103
Cupid	118.52	8.14	1145071	892	11353714

\* the Average Volume of last 5 days

Price Shockers - NSE				
Company name	LCP	Prv Close	% Chg	Volume
Forge Auto Intl	145.05	86	68.66	169200
Soma Textile	64.66	46.52	38.99	1051594
Virinchi	28.77	21.28	35.2	1647213
Nila Spaces	15.24	11.84	28.72	7971958
Maxposure	67	52.85	26.77	187000
Univastu India	290.67	237.49	22.39	842910
Religare Enterp	270.84	221.55	22.25	13535762
Peninsula Land	40.27	33.3	20.93	2881233
Glenmark	2181.1	1830.5	19.15	15678334
Mamata Machiner	490.5	415.65	18.01	25173191
Wendt	11258	9573.5	17.6	89370
SPML Infra	277.59	236.55	17.35	2371216
Country Club	19.32	16.63	16.18	118731
AKI India	15.52	13.36	16.17	548171
Signpost India	262.86	226.29	16.16	1671293
Sumeet Ind	133.91	115.69	15.75	502782
Loyal Textiles	341.6	295.15	15.74	6356
Shri Hare-Krish	80	69.15	15.69	168000
Tamil Telecom	25.66	22.18	15.69	37762
On Door Concept	186.2	160.95	15.69	19500

\* the % price rise of the last 3 days



Nifty 50 stocks - Summary Details											
Symbol	LTP	Chng	% Chng	Volume (lacs)	Turnover (crs.)	52w High	Diff with 52w H	52w Low	Diff with 52w L	365 days % chng	30 days % chng
NIFTY 50	25149.85	-205.40	-0.81%	2499.54	26248.43	26277.35	4.29%	21743.65	15.67%	1.00%	4.24%
ADANIENT	2562.90	-18.10	-0.70%	3.91	100.31	3258.00	21.34%	2025.00	26.56%	-1.23%	-16.63%
ADANIPTS	1428.30	-14.80	-1.03%	8.20	117.81	1604.95	11.01%	995.65	43.45%	-2.08%	-3.00%
APOLLOHOSP	7200.00	-159.00	-2.16%	5.78	416.32	7635.00	5.70%	6001.00	19.98%	6.37%	15.42%
ASIANPAINT	2439.00	-12.20	-0.50%	10.50	258.03	3394.90	28.16%	2124.75	14.79%	10.47%	-18.20%
AXISBANK	1171.60	7.30	0.63%	44.69	523.61	1339.65	12.54%	933.50	25.51%	-5.56%	-9.86%
BAJAJ-AUTO	8074.50	-210.50	-2.54%	5.39	438.33	12774.00	36.79%	7089.35	13.90%	-3.95%	-13.18%
BAJAJFINSV	2012.60	-26.80	-1.31%	11.46	230.71	2135.00	5.73%	1523.25	32.13%	2.07%	28.87%
BAJFINANCE	933.00	-14.65	-1.55%	42.78	400.73	978.80	4.68%	642.50	45.21%	-90.02%	-86.57%
BEL	409.00	-4.50	-1.09%	151.81	621.40	436.00	6.19%	240.25	70.24%	4.05%	23.86%
BHARTIARTL	1925.70	-38.80	-1.98%	131.04	2522.21	2045.80	5.87%	1421.45	35.47%	5.78%	35.95%
CIPLA	1486.00	8.20	0.55%	9.21	136.34	1702.05	12.69%	1335.00	11.31%	-2.18%	-2.34%
COALINDIA	381.10	-2.95	-0.77%	46.76	178.57	543.55	29.89%	349.25	9.12%	-3.88%	-21.74%
DRREDDY	1255.00	-7.60	-0.60%	8.95	112.75	1421.49	11.71%	1020.00	23.04%	-6.39%	-80.85%
EICHERMOT	5606.50	-45.50	-0.81%	5.23	294.13	5906.50	5.08%	4508.75	24.35%	5.10%	16.56%
GRASIM	2769.90	-5.20	-0.19%	4.77	132.45	2896.00	4.35%	2276.95	21.65%	2.48%	-0.97%
HCLTECH	1633.30	-30.40	-1.83%	25.48	418.01	2012.20	18.83%	1302.75	25.37%	-0.26%	10.18%
HDFCBANK	1983.00	-23.20	-1.16%	62.58	1243.79	2027.10	2.18%	1588.05	24.87%	2.08%	23.37%
HDFCLIFE	757.75	-13.50	-1.75%	35.08	268.03	820.75	7.68%	584.30	29.69%	1.15%	21.89%
HEROMOTOCO	4203.00	-118.30	-2.74%	5.56	236.91	6246.25	32.71%	3344.00	25.69%	-1.32%	-21.56%
HINDALCO	671.00	-4.05	-0.60%	44.50	298.49	772.65	13.16%	546.45	22.79%	2.54%	-2.63%
HINDUNILVR	2520.00	111.60	4.63%	72.42	1820.76	3035.00	16.97%	2136.00	17.98%	0.55%	-7.74%
ICICIBANK	1422.00	-2.10	-0.15%	71.58	1016.53	1471.60	3.37%	1153.00	23.33%	0.08%	14.55%
INDUSINDBK	858.30	5.45	0.64%	38.49	330.42	1498.00	42.70%	606.00	41.63%	0.92%	-40.19%
INFY	1594.50	-21.30	-1.32%	113.91	1811.59	2006.45	20.53%	1307.00	22.00%	1.24%	-1.97%
ITC	416.65	-0.20	-0.05%	85.78	357.63	528.50	21.16%	390.15	6.79%	-2.38%	-7.66%
JIOFIN	325.40	-6.25	-1.88%	145.49	476.08	363.00	10.36%	198.65	63.81%	9.53%	-4.68%
JSWSTEEL	1038.80	-4.50	-0.43%	9.32	97.00	1074.90	3.36%	854.15	21.62%	4.01%	12.74%
KOTAKBANK	2216.00	12.20	0.55%	26.79	593.16	2301.90	3.73%	1679.05	31.98%	2.45%	20.44%
LT	3537.00	-37.70	-1.05%	14.40	511.15	3963.50	10.76%	2965.30	19.28%	-2.86%	-2.06%
M&M	3069.90	-92.50	-2.92%	30.40	939.95	3270.95	6.15%	2425.00	26.59%	3.09%	15.75%
MARUTI	12585.00	-65.00	-0.51%	1.94	244.39	13680.00	8.00%	10725.00	17.34%	1.04%	-0.96%
NESTLEIND	2404.00	2.60	0.11%	3.70	89.36	2778.00	13.46%	2110.00	13.93%	-1.23%	-8.22%
NTPC	342.40	0.95	0.28%	172.34	590.60	448.45	23.65%	292.80	16.94%	0.66%	-10.47%
ONGC	241.70	-1.39	-0.57%	56.08	135.60	345.00	29.94%	205.00	17.90%	-0.65%	-18.47%
POWERGRID	298.95	-0.30	-0.10%	70.73	211.09	366.25	18.38%	247.30	20.89%	-0.60%	-13.52%
RELIANCE	1495.00	-22.20	-1.46%	72.35	1082.35	1605.85	6.90%	1114.85	34.10%	5.47%	-52.12%
SBILIFE	1835.00	24.80	1.37%	7.71	141.20	1936.00	5.22%	1372.55	33.69%	1.38%	16.13%
SBIN	808.60	0.60	0.07%	62.02	501.57	899.00	10.06%	680.00	18.91%	-1.11%	-4.83%
SHRIRAMFIN	667.00	-1.75	-0.26%	49.31	329.23	730.45	8.69%	493.35	35.20%	-4.09%	-75.68%
SUNPHARMA	1674.30	11.80	0.71%	12.98	217.06	1960.35	14.59%	1550.00	8.02%	-1.56%	4.00%
TATACONSUM	1076.00	-12.90	-1.18%	9.83	106.82	1250.10	13.93%	882.90	21.87%	-2.35%	-5.38%
TATAMOTORS	679.00	-16.60	-2.39%	82.75	568.58	1179.00	42.41%	535.75	26.74%	-5.01%	-30.82%
TATASTEEL	159.99	-0.67	-0.42%	206.88	331.23	172.89	7.46%	122.62	30.48%	3.20%	-4.36%
TCS	3264.50	-117.50	-3.47%	76.34	2515.83	4592.25	28.91%	3056.05	6.82%	-2.34%	-13.49%
TECHM	1598.30	-1.80	-0.11%	25.59	407.66	1807.70	11.58%	1209.40	32.16%	-0.67%	9.34%
TITAN	3361.00	-58.80	-1.72%	8.57	289.97	3867.00	13.09%	2925.00	14.91%	-2.96%	6.04%
TRENT	5348.50	-82.50	-1.52%	9.42	506.83	8345.00	35.91%	4488.00	19.17%	-6.59%	-2.46%
ULTRACEMCO	12494.00	-22.00	-0.18%	2.40	300.99	12667.00	1.37%	10047.85	24.35%	9.88%	7.58%
WIPRO	258.10	-6.95	-2.62%	131.07	339.94	324.60	20.49%	228.00	13.20%	3.99%	-50.51%
ETERNAL	263.10	0.25	0.10%	165.27	434.95	304.70	13.65%	194.80	35.06%	2.80%	#VALUE!

## Disclaimer / Disclosures

### ANALYST CERTIFICATION

I, Mrs. Vaishali Parekh B.com, Research Analyst, author and the name subscribed to this report, hereby certify that all of the views expressed in this research report accurately reflect our views about the subject issuer(s) or securities. We also certify that no part of our compensation was, is, or will be directly or indirectly related to the specific recommendation(s) or view(s) in this report.

Terms & conditions and other disclosures:

Prabhudas Lilladher Pvt. Ltd, Mumbai, India (hereinafter referred to as "PL") is engaged in the business of Stock Broking, Portfolio Manager, Depository Participant and distribution for third party financial products. PL is a subsidiary of Prabhudas Lilladher Advisory Services Pvt Ltd. which has its various subsidiaries engaged in business of commodity broking, investment banking, financial services (margin funding) and distribution of third party financial/other products, details in respect of which are available at [www.plindia.com](http://www.plindia.com)

This document has been prepared by the Research Division of PL and is meant for use by the recipient only as information and is not for circulation. This document is not to be reported or copied or made available to others without prior permission of PL. It should not be considered or taken as an offer to sell or a solicitation to buy or sell any security.

The information contained in this report has been obtained from sources that are considered to be reliable. However, PL has not independently verified the accuracy or completeness of the same. Neither PL nor any of its affiliates, its directors or its employees accepts any responsibility of whatsoever nature for the information, statements and opinion given, made available or expressed herein or for any omission therein.

Recipients of this report should be aware that past performance is not necessarily a guide to future performance and value of investments can go down as well. The suitability or otherwise of any investments will depend upon the recipient's particular circumstances and, in case of doubt, advice should be sought from an independent expert/advisor.

Either PL or its affiliates or its directors or its employees or its representatives or its clients or their relatives may have position(s), make market, act as principal or engage in transactions of securities of companies referred to in this report and they may have used the research material prior to publication.

PL may from time to time solicit or perform investment banking or other services for any company mentioned in this document.

PL is registered as Research Analyst under Securities and Exchange Board of India (Research Analysts) Regulations, 2014 PL submits that no material disciplinary action has been taken on us by any Regulatory Authority impacting Equity Research Analysis activities.

PL or its research analysts or its associates or his relatives do not have any financial interest in the subject company.

PL or its research analysts or its associates or his relatives do not have actual/beneficial ownership of one per cent or more securities of the subject company at the end of the month immediately preceding the date of publication of the research report.

PL or its research analysts or its associates or his relatives do not have any material conflict of interest at the time of publication of the research report.

PL or its associates might have received compensation from the subject company in the past twelve months.

PL or its associates might have managed or co-managed public offering of securities for the subject company in the past twelve months or mandated by the subject company for any other assignment in the past twelve months.

PL or its associates might have received any compensation for investment banking or merchant banking or brokerage services from the subject company in the past twelve months.

PL or its associates might have received any compensation for products or services other than investment banking or merchant banking or brokerage services from the subject company in the past twelve months PL or its associates might have received any compensation or other benefits from the subject company or third party in connection with the research report.

PL encourages independence in research report preparation and strives to minimize conflict in preparation of research report. PL or its analysts did not receive any compensation or other benefits from the subject Company or third party in connection with the preparation of the research report. PL or its Research Analysts do not have any material conflict of interest at the time of publication of this report.

It is confirmed that Mrs.Vaishali Parekh B.com, Research Analyst of this report has not received any compensation from the companies mentioned in the report in the preceding twelve months compensation of our Research Analysts is not based on any specific merchant banking, investment banking or brokerage service transactions.

The Research analysts for this report certifies that all of the views expressed in this report accurately reflect his or her personal views about the subject company or companies and its or their securities, and no part of his or her compensation was, is or will be, directly or indirectly related to specific recommendations or views expressed in this report.

The research analysts for this report has not served as an officer, director or employee of the subject company PL or its research analysts have not engaged in market making activity for the subject company

Our sales people, traders, and other professionals or affiliates may provide oral or written market commentary or trading strategies to our clients that reflect opinions that are contrary to the opinions expressed herein, and our proprietary trading and investing businesses may make investment decisions that are inconsistent with the recommendations expressed herein. In reviewing these materials, you should be aware that any or all of the foregoing, among other things, may give rise to real or potential conflicts of interest.

PL and its associates, their directors and employees may (a) from time to time, have a long or short position in, and buy or sell the securities of the subject company or (b) be engaged in any other transaction involving such securities and earn brokerage or other compensation or act as a market maker in the financial instruments of the subject company or act as an advisor or lender/borrower to the subject company or may have any other potential conflict of interests with respect to any recommendation and other related information and opinions.