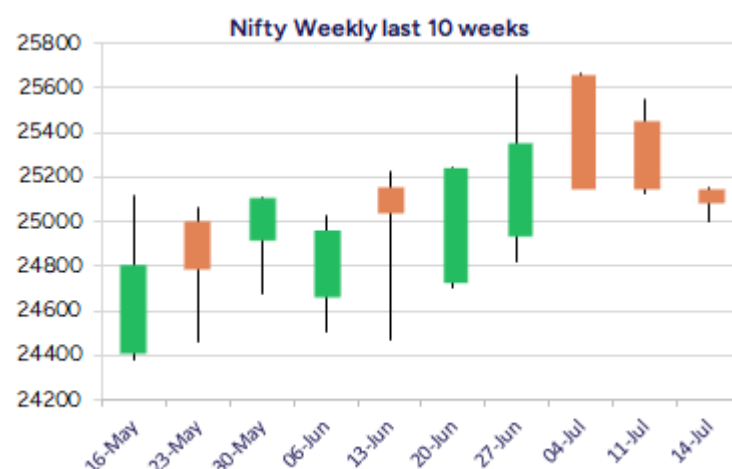
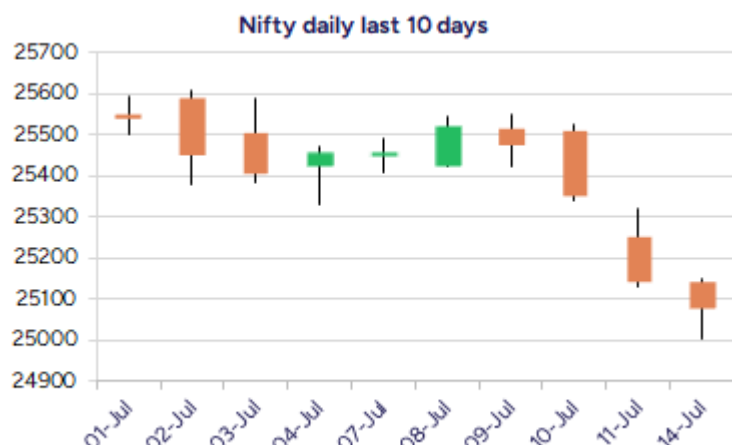


Date: 15th July 2025

* Sensex 82253.46 -247.01

* Nifty 25082.30 -67.55

* Bank Nifty 56765.35 +10.65



*Blue candle → Close rate > Open rate * Red candle → Close rate < Open rate

Market Preview

Nifty slips further; sustains 25000 zone

Nifty amid some volatility in the morning session continue to slide further with profit booking seen and sustained the 25000 zone as of now, with bias turning little bit weak. BankNifty witnessed a sluggish move with consolidation visible having the 56600 zone as the near-term support. The market breadth was overall flat with the advance decline indicating a neutral ratio at close.

Market Forecast

Nifty daily range 24900-25300

Nifty amid profit booking continue to slip further with bias gradually turning weak and is nearing the important 50EMA zone at 24900 level which is also the base of the ascending channel pattern on the daily chart which acts as an important and crucial support area which needs to be sustained as of now, to maintain the overall trend intact. We anticipate volatility to continue with the ongoing result season going on and, on the upside, as mentioned earlier, a decisive breach above the 25650 zone is necessary to trigger for fresh upward in the coming days.

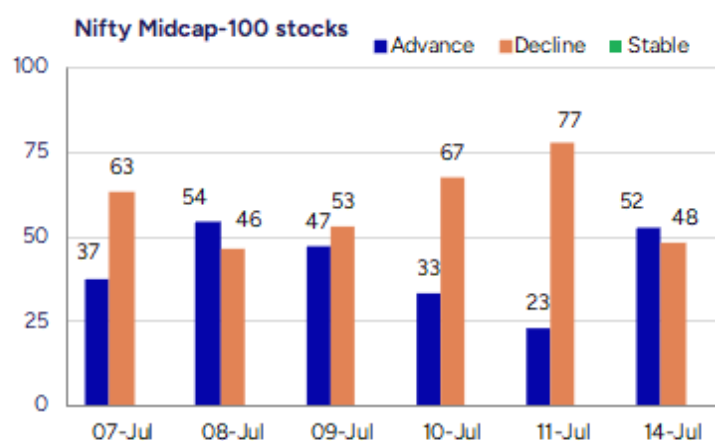
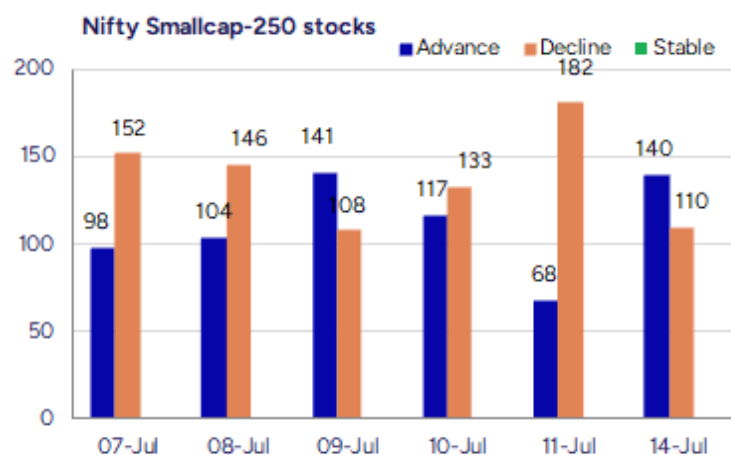
BankNifty, has been moving within a narrow range and has been in consolidation near the 56800 zone with bias overall maintained positive anticipating for further positive developments. As mentioned earlier, the index would have the important and crucial support positioned near the 56000 level which needs to be sustained as of now and at the same time, on the upside, it would need to breach above the resistance zone of 57600 level and thereafter, expect for fresh higher targets of 58500 and 60000 levels in the coming days.

The support for the day is seen at 24900 levels while the resistance is seen at 25300 levels. BankNifty would have the daily range of 56200-57300 levels.

Indices	Period	Closing	% Chng	Trend	Reversal	2 Sup	1 Sup	Pivot	1 Res	2 Res
Nifty	Daily	25082.30	-0.27%	-9	25420.20	24931	25007	25078	25154	25225
	Weekly	25149.85	-1.22%	-1	25391.05	24861	25005	25276	25421	25692
	Monthly	25517.05	3.10%	2	25312.05	24028	24772	25217	25962	26407
Bank Nifty	Daily	56765.35	0.02%	-9	57067.95	56453	56609	56752	56908	57050
	Weekly	56754.70	-0.49%	-1	57202.00	56174	56464	56902	57192	57630
	Monthly	57312.75	2.80%	3	54910.25	54237	55775	56687	58226	59138
Sensex	Daily	82253.46	-0.30%	-4	83336.60	81740	81997	82267	82524	82794
	Weekly	82500.47	-1.12%	-1	83265.25	81554	82027	82917	83390	84280
	Monthly	83606.46	2.65%	2	81262.65	79027	81317	82703	84992	86378

Gainers - Losers (Nifty 500 Stocks)

Gainers				Losers			
Company Name	Last Price	% Gain	Volume	Company Name	Last Price	% Loss	Volume
Visaman Global	81.5	19.94	144000	Aditya Ultra	25	-18.57	964000
Suvidhaa Info	4.82	19.9	5745823	Wonder Elect.	153.99	-13.7	1754719
BB Triplewall	194.35	18.54	45886	Wonder Elect.	153.99	-13.7	1754719
Neuland Lab	14548	18.27	1212750	Baheti	500.5	-12.12	111000
Ola Electric	47.07	18.27	597328587	Salona Cotspin	260.15	-7.88	67092
Abha Power	37.3	16.56	148800	GE Power India	306.7	-7.59	1110578
Jaiprakash Pow	27.23	15.23	1033357031	Influx Health	167.6	-6.39	247200



Nifty Daily chart with RSI indicator



BankNifty Daily chart with RSI indicator

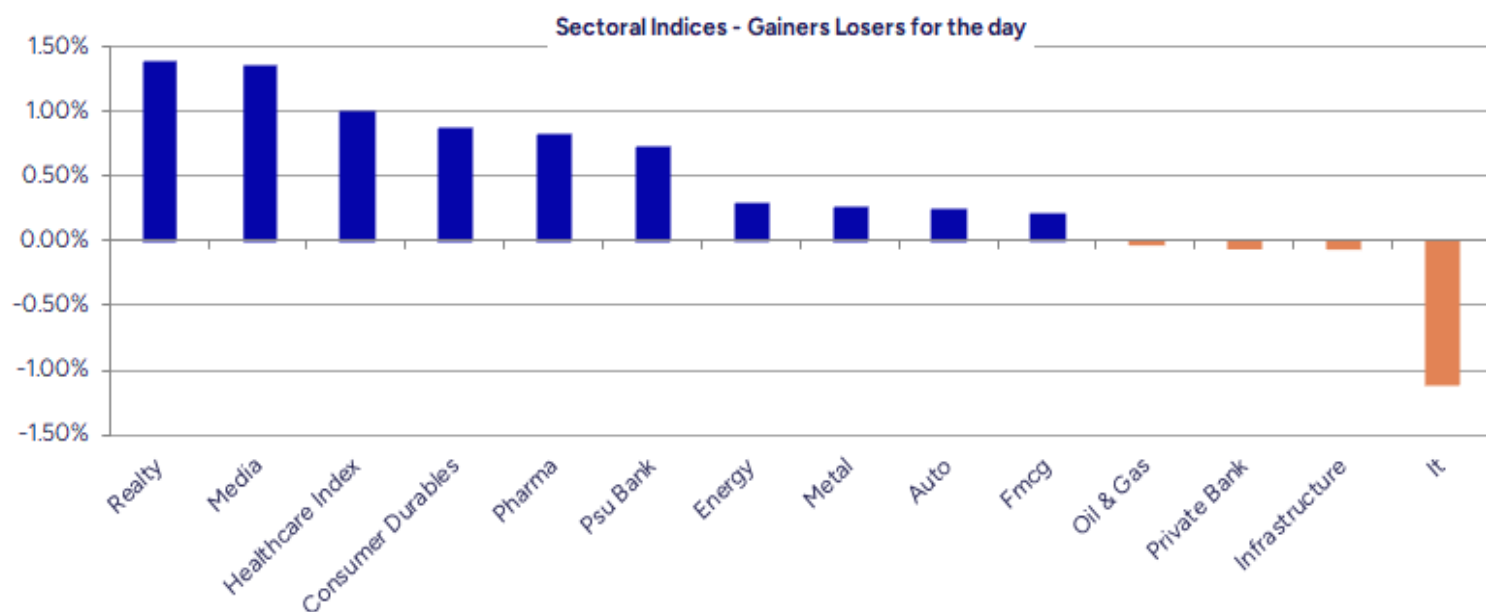


Breakouts - Cross above 200 DMA			
Company Name	LCP	Change %	200 DMA
Neuland Lab	14548	11.14	13089.47
Jayaswal Neco	42.72	8.62	39.33
B&B Triplewall	194.35	5.68	183.9
Alembic Pharma	1030.4	4.61	984.96
Lloyds Luxuries	97.5	4.23	93.54
Omax Autos	104.72	3.27	101.4
Astec Life	930.3	2.40	908.5
Landmark Cars	544.3	2.33	531.93
Himadri Special	516.65	2.22	505.41
Apollo Sindoori	1551.8	1.51	1528.79
Oswal ChemandFe	46.05	1.43	45.4
Alivus Life	1072.9	1.04	1061.87
Wealth First Po	1223.5	0.96	1211.91
Titan Company	3404.7	0.87	3375.17
Jullundur Motor	94.17	0.79	93.43
C E Info	1809.4	0.68	1797.14
TTK Healthcare	1357.3	0.67	1348.33
Strides Pharma	910	0.65	904.16

* Stocks crossing above its Simple Moving Average (200DMA)

Breakdown - Cross below 200 DMA			
Company Name	LCP	Change %	200 DMA
Wonder Elect.	153.99	-6.19	164.15
S P Apparels	797.9	-4.92	839.16
Coral India Fin	44.86	-3.28	46.38
Salona Cotspin	260.15	-3.19	268.73
GE Power India	306.7	-2.57	314.79
Tirupati Forge	42.01	-2.37	43.03
Megatherm Induc	316.5	-2.05	323.11
Firstsource Sol	348.6	-1.49	353.86
EPM	100.3	-1.23	101.55
Damodar Ind	37.76	-1.13	38.19
PCBL Chemical	414.35	-1.08	418.89
AB Money	175.8	-1.03	177.63
AYM Syntex	228.42	-1.01	230.76
Kellton Tech	131.98	-0.96	133.26
Balkrishna	21.73	-0.91	21.93
Lakshmi Finance	216.05	-0.90	218.02
Pidilite Ind	2964.4	-0.90	2991.26
Archidply Decor	90	-0.83	90.75

* Stocks crossing below its Simple Moving Average (200DMA)



Stocks witnessing a volume surge as compared to their 5 day average volume

Watch out for the stocks that have seen a huge spurt in its share price over the last three days

Volume Shockers - NSE					
Company name	LCP	% Chg	Volume	Avg Vol *	% Chg
Aditya Ultra	25	-18.57	964000	12400	7674
Anand Rathi	2540.2	14.85	4087689	73785	5440
Ola Electric	47.07	18.27	597328587	2.4E+07	2361
Jayaswal Neco	42.72	12.33	5943875	262577	2164
Tega Industries	1772.8	4.66	499557	24591	1931
Neuland Lab	14548	18.27	1212750	67077	1708
Castrol	222.79	1.32	24882915	1746717	1325
Arihant Super	416.1	0.45	582444	41673	1298
Visaman Global	81.5	19.94	144000	10800	1233
Abha Power	37.3	16.56	148800	11200	1229
Gujarat Apollo	400.1	6.75	200879	15970	1158
Cool Caps	81.25	2.72	100000	8400	1090
Adani Green Ene	1025.9	3.08	5134094	480592	968
Flair Writing	319.8	6.58	1002023	97490	928
ATC Energies	83.15	3.04	526800	51840	916
Krishna Institu	710.3	0.06	588692	59456	890
One Point One S	50.04	1.11	1716430	177026	870
Epigral	1736.3	-0.28	227008	24021	845
Control Print	900.05	7.76	370499	39303	843
MTNL	52.09	7.2	23212166	2481835	835

* the Average Volume of last 5 days

Price Shockers - NSE				
Company name	LCP	Prv Close	% Chg	Volume
Forge Auto Intl	159.55	100.75	58.36	50400
Soma Textile	71.12	44.91	58.36	65507
Crayons Advert	63.55	50.55	25.72	26000
Maxposure	67.35	53.6	25.65	101000
Glenmark	2219.2	1818.8	22.01	3573890
Jaiprakash Pow	27.23	22.37	21.73	1.033E+09
Neuland Lab	14548	11968	21.56	1212750
Vaswani Ind	61.17	50.65	20.77	1403550
BB Triplewall	194.35	164.94	17.83	45886
Cupid	126.39	107.94	17.09	10137323
Cupid	126.39	107.94	17.09	10137323
Univastu India	305.75	262.03	16.69	760570
Jainik Power	92.05	78.95	16.59	166800
Ola Electric	47.07	40.38	16.57	597328587
Solex Energy	1388.6	1199.6	15.76	24875
Sumeet Ind	140.6	121.47	15.75	39792
Kilitch Drugs	487.5	421.2	15.74	131351
On Door Concept	195.5	168.95	15.71	15600
Wendt	11312.5	9797.5	15.46	74454
Eleganz Interio	138.9	121.8	14.04	135000

* the % price rise of the last 3 days

Nifty 50 Stocks - Summary Details											
Symbol	LTP	Chng	% Chng	Volume (lacs)	Turnover (crs.)	52w High	Diff with 52w H	52w Low	Diff with 52w L	365 days % chng	30 days % chng
NIFTY 50	25082.30	-67.55	-0.27%	2595.34	23316	26277	4.55%	21744	15.35%	1.74%	2.64%
ADANIENT	2578.00	19.30	0.75%	5.37	138	3258	20.87%	2025	27.31%	2.03%	-16.53%
ADANIPTS	1433.00	1.30	0.09%	7.18	103	1605	10.71%	996	43.93%	1.90%	-3.70%
APOLLOHOSP	7215.00	25.50	0.35%	6.70	484	7635	5.50%	6001	20.23%	2.79%	13.15%
ASIANPAINT	2404.80	-34.40	-1.41%	8.92	215	3395	29.16%	2125	13.18%	10.16%	-18.67%
AXISBANK	1172.90	-0.90	-0.08%	47.73	559	1340	12.45%	934	25.65%	-2.65%	-10.89%
BAJAJ-AUTO	8080.00	13.00	0.16%	2.48	201	12774	36.75%	7089	13.97%	-4.68%	-14.46%
BAJAJFINSV	2000.20	-17.00	-0.84%	6.05	121	2135	6.31%	1523	31.31%	0.31%	26.29%
BAJFINANCE	920.00	-13.50	-1.45%	66.58	612	979	6.01%	643	43.19%	-90.00%	-86.67%
BEL	407.50	-1.80	-0.44%	178.44	727	436	6.54%	240	69.61%	3.83%	22.88%
BHARTIARTL	1923.10	1.20	0.06%	52.69	1008	2046	6.00%	1421	35.29%	4.43%	34.09%
CIPLA	1482.90	-2.10	-0.14%	15.55	231	1702	12.88%	1335	11.08%	-1.34%	-1.79%
COALINDIA	383.90	2.95	0.77%	51.10	196	544	29.37%	349	9.92%	-2.62%	-23.23%
DRREDDY	1251.80	-2.90	-0.23%	10.36	130	1421	11.94%	1020	22.73%	-7.91%	-81.33%
EICHERMOT	5541.50	-71.00	-1.27%	5.04	279	5907	6.18%	4509	22.91%	5.52%	15.47%
ETERNAL	271.00	7.65	2.90%	501.85	1360	305	11.06%	195	39.12%	5.73%	#VALUE!
GRASIM	2789.00	27.00	0.98%	29.14	811	2896	3.69%	2277	22.49%	3.69%	-2.87%
HCLTECH	1613.50	-24.80	-1.51%	33.35	539	2012	19.81%	1303	23.85%	-3.36%	5.01%
HDFCBANK	1982.90	-0.80	-0.04%	65.44	1295	2027	2.18%	1588	24.86%	3.45%	22.25%
HDFCLIFE	767.00	8.00	1.05%	17.95	137	821	6.55%	584	31.27%	0.82%	19.42%
HEROMOTOCO	4244.80	26.10	0.62%	2.94	124	6246	32.04%	3344	26.94%	-2.66%	-23.94%
HINDALCO	666.90	-4.05	-0.60%	43.38	291	773	13.69%	546	22.04%	4.54%	-3.05%
HINDUNILVR	2517.40	-2.20	-0.09%	24.28	610	3035	17.05%	2136	17.86%	8.65%	-3.91%
ICICIBANK	1421.90	-	#VALUE!	58.46	831	1472	3.38%	1153	23.32%	0.41%	15.33%
INDUSINDBK	865.95	7.10	0.83%	36.06	312	1498	42.19%	606	42.90%	5.14%	-40.13%
INFY	1570.50	-24.40	-1.53%	91.73	1440	2006	21.73%	1307	20.16%	-0.44%	-6.83%
ITC	419.35	2.55	0.61%	68.97	289	529	20.65%	390	7.48%	0.70%	-9.20%
JIOFIN	319.30	-6.50	-2.00%	179.81	578	363	12.04%	199	60.73%	10.80%	-7.01%
JSWSTEEL	1040.40	3.20	0.31%	12.39	128	1075	3.21%	854	21.81%	5.06%	11.00%
KOTAKBANK	2206.60	-14.00	-0.63%	23.95	529	2302	4.14%	1679	31.42%	5.37%	21.16%
LT	3493.90	-46.70	-1.32%	13.59	475	3964	11.85%	2965	17.83%	-1.30%	-2.98%
M&M	3093.20	20.00	0.65%	29.59	914	3271	5.43%	2425	27.55%	2.24%	13.66%
MARUTI	12534.00	-40.00	-0.32%	2.47	309	13680	8.38%	10725	16.87%	1.34%	0.09%
NESTLEIND	2393.00	-10.50	-0.44%	4.71	113	2778	13.86%	2110	13.41%	1.12%	-7.88%
NTPC	341.50	-1.20	-0.35%	115.17	395	448	23.85%	293	16.63%	3.24%	-9.13%
ONGC	244.15	2.39	0.99%	75.69	184	345	29.23%	205	19.10%	-3.88%	-21.28%
POWERGRID	297.85	-0.70	-0.23%	54.84	164	366	18.68%	247	20.44%	4.57%	-12.98%
RELIANCE	1486.40	-8.80	-0.59%	103.12	1534	1606	7.44%	1115	33.33%	4.71%	-53.18%
SBILIFE	1850.00	14.80	0.81%	12.31	227	1936	4.44%	1373	34.79%	4.56%	17.43%
SBIN	809.10	0.45	0.06%	69.39	562	899	10.00%	680	18.99%	2.06%	-5.94%
SHRIRAMFIN	670.30	2.05	0.31%	28.32	189	730	8.23%	493	35.87%	0.16%	-76.09%
SUNPHARMA	1681.70	9.70	0.58%	13.10	221	1960	14.21%	1550	8.50%	-0.94%	6.00%
TATACONSUM	1071.00	-5.80	-0.54%	7.71	83	1250	14.33%	883	21.30%	-0.15%	-6.55%
TATAMOTORS	674.80	-7.00	-1.03%	77.49	524	1179	42.77%	536	25.95%	-4.25%	-32.94%
TATASTEEL	160.25	0.41	0.26%	151.53	243	171	6.26%	123	30.69%	5.07%	-5.25%
TCS	3227.50	-38.50	-1.18%	39.24	1265	4592	29.72%	3056	5.61%	-5.22%	-21.94%
TECHM	1575.00	-27.50	-1.72%	20.68	326	1808	12.87%	1209	30.23%	-3.41%	6.47%
TITAN	3402.00	40.40	1.20%	7.56	255	3867	12.02%	2925	16.31%	-1.76%	4.08%
TRENT	5313.00	-51.00	-0.95%	8.29	441	8345	36.33%	4488	18.38%	-4.04%	-5.08%
ULTRACEMCO	12520.00	25.00	0.20%	2.79	349	12667	1.16%	10048	24.60%	11.32%	7.69%
WIPRO	254.25	-4.05	-1.57%	103.88	264	325	21.67%	228	11.51%	-0.73%	-53.89%

Disclaimer / Disclosures

ANALYST CERTIFICATION

I, Mrs. Vaishali Parekh B.com, Research Analyst, author and the name subscribed to this report, hereby certify that all of the views expressed in this research report accurately reflect our views about the subject issuer(s) or securities. We also certify that no part of our compensation was, is, or will be directly or indirectly related to the specific recommendation(s) or view(s) in this report.

Terms & conditions and other disclosures:

Prabhudas Lilladher Pvt. Ltd, Mumbai, India (hereinafter referred to as "PL") is engaged in the business of Stock Broking, Portfolio Manager, Depository Participant and distribution for third party financial products. PL is a subsidiary of Prabhudas Lilladher Advisory Services Pvt Ltd. which has its various subsidiaries engaged in business of commodity broking, investment banking, financial services (margin funding) and distribution of third party financial/other products, details in respect of which are available at www.plindia.com

This document has been prepared by the Research Division of PL and is meant for use by the recipient only as information and is not for circulation. This document is not to be reported or copied or made available to others without prior permission of PL. It should not be considered or taken as an offer to sell or a solicitation to buy or sell any security.

The information contained in this report has been obtained from sources that are considered to be reliable. However, PL has not independently verified the accuracy or completeness of the same. Neither PL nor any of its affiliates, its directors or its employees accepts any responsibility of whatsoever nature for the information, statements and opinion given, made available or expressed herein or for any omission therein.

Recipients of this report should be aware that past performance is not necessarily a guide to future performance and value of investments can go down as well. The suitability or otherwise of any investments will depend upon the recipient's particular circumstances and, in case of doubt, advice should be sought from an independent expert/advisor.

Either PL or its affiliates or its directors or its employees or its representatives or its clients or their relatives may have position(s), make market, act as principal or engage in transactions of securities of companies referred to in this report and they may have used the research material prior to publication.

PL may from time to time solicit or perform investment banking or other services for any company mentioned in this document.

PL is registered as Research Analyst under Securities and Exchange Board of India (Research Analysts) Regulations, 2014 PL submits that no material disciplinary action has been taken on us by any Regulatory Authority impacting Equity Research Analysis activities.

PL or its research analysts or its associates or his relatives do not have any financial interest in the subject company.

PL or its research analysts or its associates or his relatives do not have actual/beneficial ownership of one per cent or more securities of the subject company at the end of the month immediately preceding the date of publication of the research report.

PL or its research analysts or its associates or his relatives do not have any material conflict of interest at the time of publication of the research report.

PL or its associates might have received compensation from the subject company in the past twelve months.

PL or its associates might have managed or co-managed public offering of securities for the subject company in the past twelve months or mandated by the subject company for any other assignment in the past twelve months.

PL or its associates might have received any compensation for investment banking or merchant banking or brokerage services from the subject company in the past twelve months.

PL or its associates might have received any compensation for products or services other than investment banking or merchant banking or brokerage services from the subject company in the past twelve months PL or its associates might have received any compensation or other benefits from the subject company or third party in connection with the research report.

PL encourages independence in research report preparation and strives to minimize conflict in preparation of research report. PL or its analysts did not receive any compensation or other benefits from the subject Company or third party in connection with the preparation of the research report. PL or its Research Analysts do not have any material conflict of interest at the time of publication of this report.

It is confirmed that Mrs.Vaishali Parekh B.com, Research Analyst of this report has not received any compensation from the companies mentioned in the report in the preceding twelve months compensation of our Research Analysts is not based on any specific merchant banking, investment banking or brokerage service transactions.

The Research analysts for this report certifies that all of the views expressed in this report accurately reflect his or her personal views about the subject company or companies and its or their securities, and no part of his or her compensation was, is or will be, directly or indirectly related to specific recommendations or views expressed in this report.

The research analysts for this report has not served as an officer, director or employee of the subject company PL or its research analysts have not engaged in market making activity for the subject company

Our sales people, traders, and other professionals or affiliates may provide oral or written market commentary or trading strategies to our clients that reflect opinions that are contrary to the opinions expressed herein, and our proprietary trading and investing businesses may make investment decisions that are inconsistent with the recommendations expressed herein. In reviewing these materials, you should be aware that any or all of the foregoing, among other things, may give rise to real or potential conflicts of interest.

PL and its associates, their directors and employees may (a) from time to time, have a long or short position in, and buy or sell the securities of the subject company or (b) be engaged in any other transaction involving such securities and earn brokerage or other compensation or act as a market maker in the financial instruments of the subject company or act as an advisor or lender/borrower to the subject company or may have any other potential conflict of interests with respect to any recommendation and other related information and opinions.