

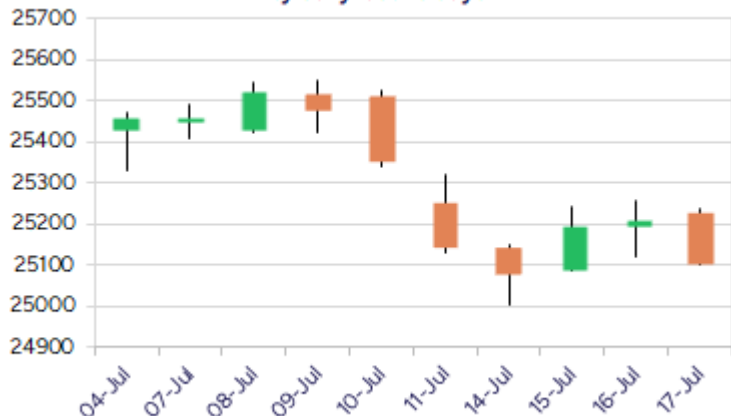
Date: 18th July 2025

* Sensex 82259.24 - 375.24

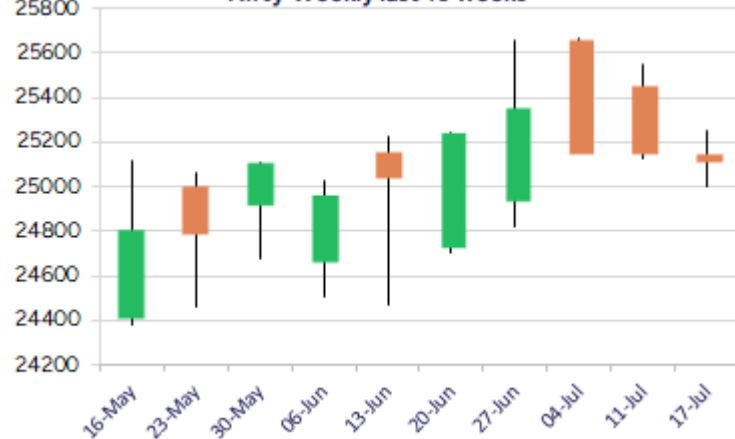
* Nifty 25111.45 - 100.60

* Bank Nifty 56828.80 - 340.15

Nifty daily last 10 days



Nifty Weekly last 10 weeks



*Blue candle → Close rate > Open rate * Red candle → Close rate < Open rate

Market Preview

Nifty resists near 25250 zone

Nifty once again failed to move past the 25250 zone hurdle and amid profit booking slipped down to end near the 25100 level with overall bias maintained intact as of now. BankNifty continue to remained rangebound, once again resisting near the 57300 zone and technically would need to sustain above the near-term support at 56600 level to maintain the bias intact. The market breadth was overall flat with the advance decline indicating a neutral ratio at close.

Market Forecast

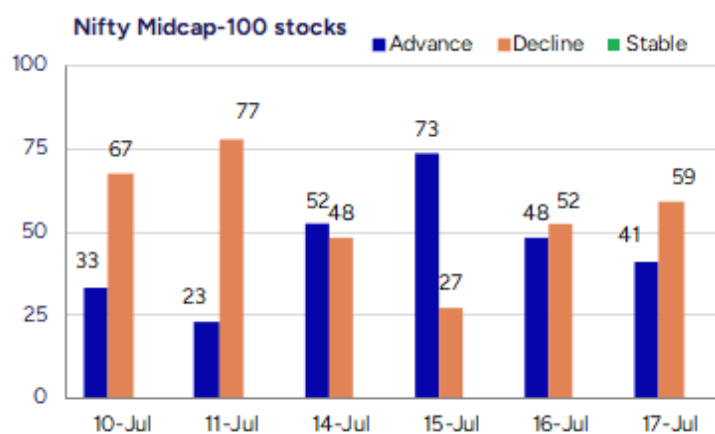
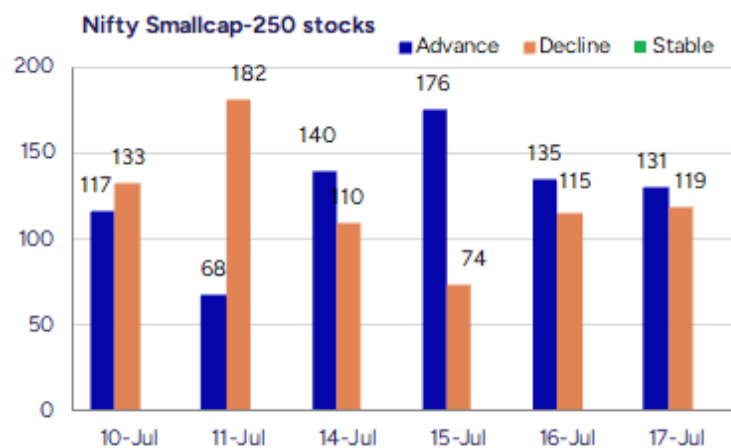
Nifty daily range 25000-25300

Nifty once again found resistance near the hurdle of 25250 level and slipped gradually as the day progressed to end in the red near 25100 zone with overall trend maintained positive. As mentioned earlier, the important 50EMA zone at 24900 level would be the important and crucial support zone which is also where the base of the ascending channel is positioned, which needs to be sustained and on the upside, once a decisive breach above 25250 zone is confirmed, one can expect for near-term targets of 25500 and 25700 levels in the coming days. BankNifty, continue to move within a narrow range for quite some time, once again halting near the 57300 zone finding resistance and having the important support near 56600 level, would be awaiting the important result outcome of the major frontline banking stocks like HDFC Bank and ICICI Bank which is due in the coming sessions. The index would need to sustain the important and crucial support positioned near the 56000 level, below which the overall bias would turn weak. The support for the day is seen at 25000 levels while the resistance is seen at 25300 levels. BankNifty would have the daily range of 56400-57300 levels.

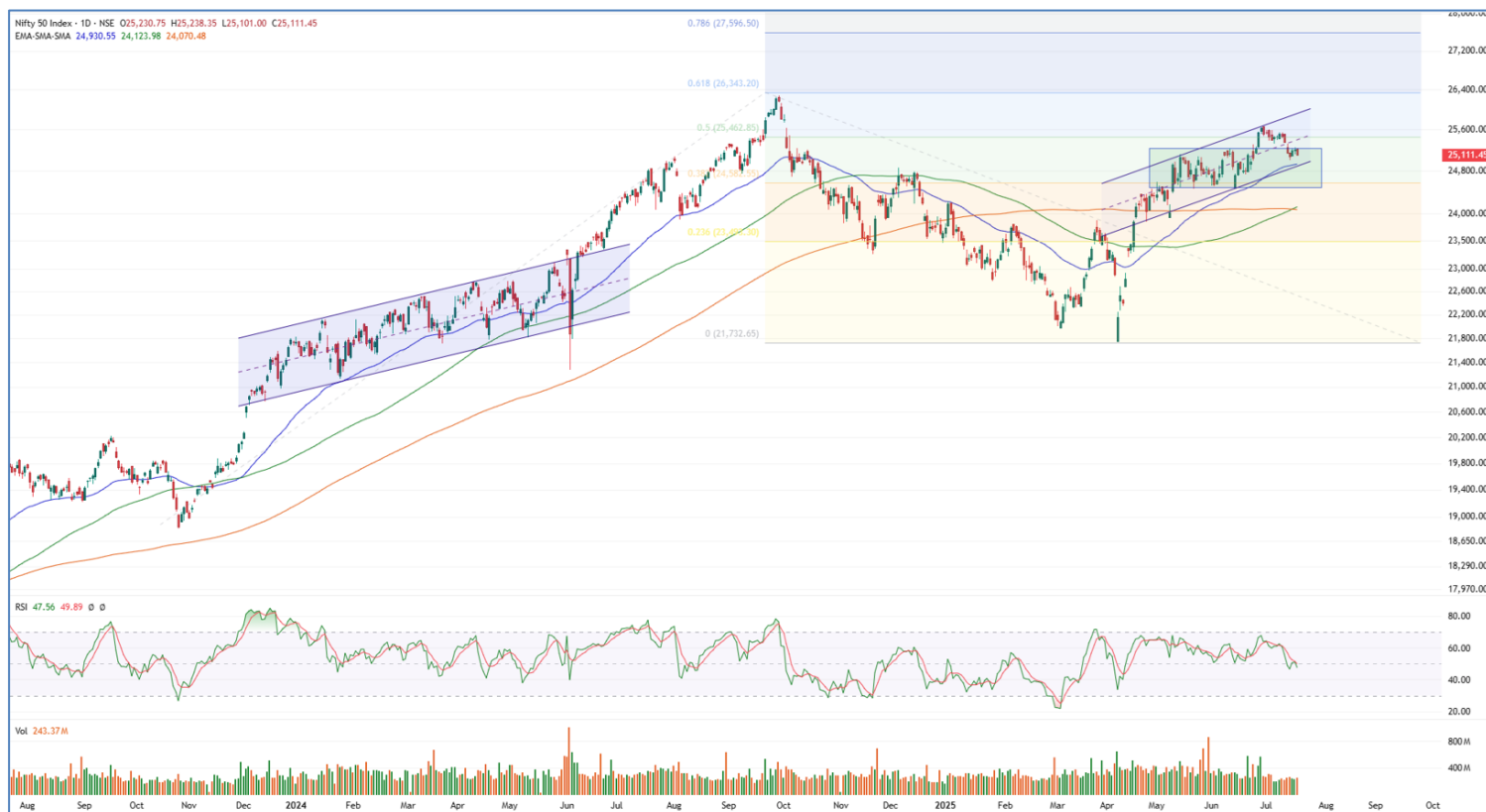
Indices	Period	Closing	% Chng	Trend	Reversal	2 Sup	1 Sup	Pivot	1 Res	2 Res
Nifty	Daily	25111.45	-0.40%	-12	25225.90	25013	25062	25150	25200	25288
	Weekly	25149.85	-1.22%	-1	25391.05	24861	25005	25276	25421	25692
	Monthly	25517.05	3.10%	2	25312.05	24028	24772	25217	25962	26407
Bank Nifty	Daily	56828.80	-0.59%	-1	57050.50	56475	56652	56957	57134	57440
	Weekly	56754.70	-0.49%	-1	57202.00	56174	56464	56902	57192	57630
	Monthly	57312.75	2.80%	3	54910.25	54237	55775	56687	58226	59138
Sensex	Daily	82259.24	-0.45%	-7	82686.80	81874	82067	82412	82604	82950
	Weekly	82500.47	-1.12%	-1	83265.25	81554	82027	82917	83390	84280
	Monthly	83606.46	2.65%	2	81262.65	79027	81317	82703	84992	86378

Gainers - Losers (Nifty 500 Stocks)

Gainers				Losers			
Company Name	Last Price	% Gain	Volume	Company Name	Last Price	% Loss	Volume
Bulkcorp Intern	69.6	20	10800	Jayaswal Neco	41.5	-18.9	15016540
LE Travenues Te	213.62	19.37	84972073	Magellanic	87.56	-10.03	77151016
Aakaar Medical	89.75	19.11	464000	Shigan Quantum	84.35	-8.32	10500
Aditya Ultra	41.9	16.39	800000	Paramatrix Tech	88	-7.76	3600
Radhika Jewel	98.55	14.45	18355398	Bluspring Ent	88.03	-7.29	1613497
Namo Ewaste	176.55	12.6	379200	Maxposure	63.45	-7.17	63000
Navkar Corp	127.95	12.22	9669481	Marvel Decor Lt	93.1	-6.81	1000



Nifty Daily chart with RSI indicator



BankNifty Daily chart with RSI indicator

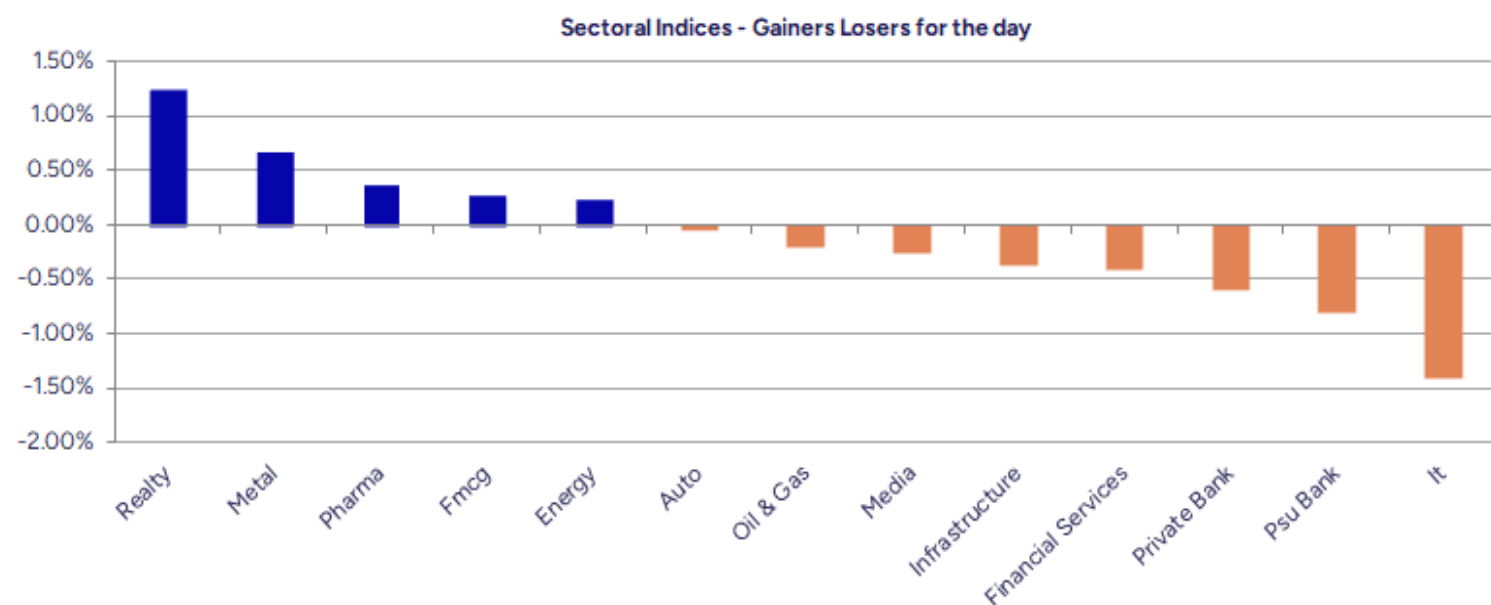


Breakouts - Cross above 200 DMA			
Company Name	LCP	Change %	200 DMA
Manaksia Alumin	29.6	9.71	26.98
Orient Abrasive	44.96	9.10	41.21
Thomas Cook	177.69	6.59	166.71
Chemcon Special	227.8	6.51	213.87
Navkar Corp	127.95	5.10	121.74
Star Cement	220.21	4.08	211.57
Eurotex	14.35	3.02	13.93
Concord Biotech	1920.5	2.33	1876.71
Tolins Tyres	165.1	2.27	161.44
Minda Corp	536.5	2.25	524.69
P N Gadgil	627.45	2.19	613.98
Metro	1201.2	2.05	1177.05
Balkrishna Ind	2742.1	2.05	2686.93
AFL	493.15	2.04	483.28
Butterfly	744.5	1.85	730.95
Inox Green Ener	157.85	1.71	155.2
CG Power	689.35	1.55	678.81
Akzo Nobel	3618.1	1.43	3567.17

* Stocks crossing above its Simple Moving Average (200DMA)

Breakdown - Cross below 200 DMA			
Company Name	LCP	Change %	200 DMA
Rupa and Comp	221.14	-2.83	227.59
Hind Motors	25.64	-2.21	26.22
Parin Enter	327.25	-1.89	333.56
AVT Natural	69.28	-1.83	70.57
Swan Energy	507.05	-1.67	515.65
Manugraph Ind	19.83	-1.64	20.16
TT	13.85	-1.56	14.07
KRISHCA	267.4	-1.43	271.28
Greenlam Ind	254.25	-1.20	257.34
Jayant Agro-Org	262.65	-1.18	265.79
Bajaj Hindustha	26.85	-1.07	27.14
Electro Force	51.5	-1.04	52.04
Damodar Ind	37.72	-0.89	38.06
Monarch Net	371.5	-0.66	373.97
Ircon Internati	189.78	-0.61	190.95
Agro Phos India	37.04	-0.54	37.24
Marksans Pharma	258.9	-0.50	260.21
AB Money	177.3	-0.44	178.08

* Stocks crossing below its Simple Moving Average (200DMA)



Stocks witnessing a volume surge as compared to their 5 day average volume

Watch out for the stocks that have seen a huge spurt in its share price over the last three days

Volume Shockers - NSE					
Company name	LCP	% Chg	Volume	Avg Vol *	% Chg
Hinduja Global	613.7	10.72	1167811	16599	6936
LE Travenues Te	213.62	19.37	84972073	1271544	6583
Radhika Jewel	98.55	14.45	18355398	296489	6091
Khandwala Sec	25.23	3.15	653466	11090	5792
Manaksia Alumin	29.6	11.95	796755	32457	2355
PNC Infratech	319.1	2.52	7557387	377382	1903
Thermax	3885.9	6.59	3973098	203467	1853
Chemcon Special	227.8	9.68	910694	48847	1764
Sterling Wilson	335.1	1.85	10840954	581779	1763
ZIM Lab	120.82	7.67	2601721	151182	1621
Krishival Foods	399.8	0.58	19841	1200	1553
Alok Industries	22.04	6.01	274114456	1.7E+07	1530
Navkar Corp	127.95	12.22	9669481	595996	1522
Motisons Jewell	22.67	4.42	11606976	764990	1417
Goldiam Inter	357.9	4.71	2344070	155604	1406
Affordable Robo	523.15	2.76	189386	12998	1357
Falcon Technopr	16.1	-5.01	163200	11280	1347
Capital SFB	284.8	1.62	729277	51405	1319
Lumax Inds	3913.7	3.36	183831	13068	1307
Orient Abrasive	44.96	9.18	1051388	76367	1277

* the Average Volume of last 5 days

Price Shockers - NSE				
Company name	LCP	Prv Close	% Chg	Volume
Aditya Ultra	41.9	25	67.6	800000
Mirc Electronic	18.23	14.65	24.44	17185322
Deccan Cements	1063.95	856.85	24.17	860708
Sampann Utpadan	34.44	28.03	22.87	890945
Waaree Renewabl	1184.3	976	21.34	7893358
Namo Ewaste	176.55	145.5	21.34	379200
Soma Textile	86.23	71.12	21.25	32939
Barak Vally Cem	44.34	37.29	18.91	725024
Coffee Day	40.06	33.87	18.28	12676574
Fischer Medical	952.2	807.25	17.96	119193
Chemcon Special	227.8	193.32	17.84	910694
Radhika Jewel	98.55	84.65	16.42	18355398
Supreme Facilit	38.5	33.1	16.31	44800
Panache Digilif	261.32	225.75	15.76	26940
Shanti Overseas	13.89	12	15.75	45381
Cyber Media	18.76	16.21	15.73	62963
ORIENT CERATECH	44.96	38.85	15.73	1051388
Palred Tech	64.32	55.58	15.73	3444
Naci Industries	288.25	249.14	15.7	166545
Venus Remedies	552.8	477.8	15.7	183614

* the % price rise of the last 3 days

Nifty 50 stocks - Summary Details											
Symbol	LTP	Chng	% Chng	Volume (lacs)	Turnover (crs.)	52w High	Diff with 52w H	52w Low	Diff with 52w L	365 days % chng	30 days % chng
NIFTY 50	25111.45	-100.60	-0.40%	2433.73	24712.13	26277.35	4.44%	21743.65	15.49%	1.06%	2.43%
ADANIENT	2614.90	6.40	0.25%	7.86	206.54	3258.00	19.74%	2025.00	29.13%	2.54%	-16.11%
ADANIPTS	1450.40	-6.30	-0.43%	11.68	169.95	1604.95	9.63%	995.65	45.67%	4.01%	-2.83%
APOLLOHOSP	7367.00	14.50	0.20%	3.79	279.59	7635.00	3.51%	6001.00	22.76%	3.35%	13.93%
ASIANPAINT	2398.30	-12.20	-0.51%	5.26	126.41	3394.90	29.36%	2124.75	12.87%	7.38%	-18.96%
AXISBANK	1161.00	-7.40	-0.63%	56.92	660.99	1318.60	11.95%	933.50	24.37%	-3.87%	-10.40%
BAJAJ-AUTO	8321.50	19.00	0.23%	2.50	207.87	12774.00	34.86%	7089.35	17.38%	-2.66%	-14.57%
BAJAJFINSV	2023.60	-12.40	-0.61%	4.59	93.12	2135.00	5.22%	1523.25	32.85%	0.38%	26.49%
BAJFINANCE	920.50	-1.25	-0.14%	45.83	422.18	978.80	5.96%	642.50	43.27%	-1.73%	-86.94%
BEL	404.05	-2.10	-0.52%	79.20	321.11	436.00	7.33%	240.25	68.18%	0.57%	24.53%
BHARTIARTL	1929.30	-7.30	-0.38%	62.56	1210.02	2045.80	5.69%	1422.60	35.62%	4.05%	32.06%
CIPLA	1479.80	4.00	0.27%	13.49	199.84	1702.05	13.06%	1335.00	10.85%	-3.35%	-2.29%
COALINDIA	385.85	-0.60	-0.16%	37.46	144.88	543.55	29.01%	349.25	10.48%	-2.00%	-24.59%
DRREDDY	1265.00	5.60	0.44%	7.09	89.76	1421.49	11.01%	1020.00	24.02%	-6.49%	-81.05%
EICHERMOT	5650.00	23.50	0.42%	3.92	221.18	5906.50	4.34%	4508.75	25.31%	4.87%	14.45%
GRASIM	2760.00	-2.40	-0.09%	7.20	198.59	2896.00	4.70%	2276.95	21.21%	2.13%	-2.30%
HCLTECH	1544.20	-18.60	-1.19%	49.63	771.95	2012.20	23.26%	1302.75	18.53%	-9.30%	-0.43%
HDFCBANK	1986.00	-10.30	-0.52%	112.64	2243.58	2027.10	2.03%	1588.05	25.06%	3.15%	23.25%
HDFCLIFE	751.50	-4.45	-0.59%	43.78	329.88	820.75	8.44%	584.30	28.62%	-1.89%	16.88%
HEROMOTOCO	4445.00	20.50	0.46%	4.15	184.32	6246.25	28.84%	3344.00	32.92%	1.37%	-20.68%
HINDALCO	672.00	5.25	0.79%	40.22	270.91	772.65	13.03%	546.45	22.98%	2.64%	-3.48%
HINDUNILVR	2513.00	-4.60	-0.18%	8.07	203.18	3035.00	17.20%	2136.00	17.65%	8.17%	-6.35%
ICICIBANK	1418.40	-8.00	-0.56%	129.27	1831.35	1471.60	3.62%	1153.00	23.02%	-0.04%	15.04%
INDUSINDBK	863.00	-16.75	-1.90%	41.85	364.90	1498.00	42.39%	606.00	42.41%	7.12%	-39.16%
INFY	1581.00	-26.90	-1.67%	73.74	1172.67	2006.45	21.20%	1307.00	20.96%	-0.98%	-6.85%
ITC	423.25	-1.35	-0.32%	72.38	307.32	528.50	19.91%	390.15	8.48%	1.53%	-8.80%
JIOFIN	319.00	-0.55	-0.17%	120.33	384.08	363.00	12.12%	198.65	60.58%	8.64%	-7.18%
JSWSTEEL	1032.30	2.50	0.24%	15.54	160.32	1074.90	3.96%	854.15	20.86%	2.59%	10.22%
KOTAKBANK	2172.80	-6.60	-0.30%	21.80	473.74	2301.90	5.61%	1679.05	29.41%	1.89%	20.72%
LT	3478.60	-25.20	-0.72%	22.17	773.06	3963.50	12.23%	2965.30	17.31%	-3.44%	-3.65%
M&M	3216.00	19.50	0.61%	32.67	1043.15	3270.95	1.68%	2425.00	32.62%	5.72%	15.95%
MARUTI	12492.00	-72.00	-0.57%	1.89	237.05	13680.00	8.68%	10725.00	16.48%	0.27%	-0.60%
NESTLEIND	2449.90	-10.10	-0.41%	2.73	67.15	2778.00	11.81%	2110.00	16.11%	2.94%	-5.65%
NTPC	342.55	0.10	0.03%	75.62	259.56	448.45	23.61%	292.80	16.99%	2.62%	-9.99%
ONGC	243.77	0.92	0.38%	70.06	170.82	345.00	29.34%	205.00	18.91%	-5.43%	-24.73%
POWERGRID	296.80	-0.25	-0.08%	83.18	246.95	366.25	18.96%	247.30	20.02%	2.91%	-13.26%
RELIANCE	1478.70	-6.90	-0.46%	118.54	1754.16	1600.00	7.58%	1114.85	32.64%	3.32%	-52.88%
SBILIFE	1802.40	-26.70	-1.46%	8.86	160.19	1936.00	6.90%	1372.55	31.32%	1.74%	12.81%
SBIN	828.75	-2.95	-0.35%	230.69	1924.91	899.00	7.81%	680.00	21.88%	4.95%	-5.56%
SHRIRAMFIN	664.85	-3.50	-0.52%	26.72	178.33	730.45	8.98%	493.35	34.76%	-1.15%	-76.24%
SUNPHARMA	1702.50	1.50	0.09%	14.61	249.58	1960.35	13.15%	1553.05	9.62%	0.93%	7.71%
TATACONSUM	1103.20	21.70	2.01%	11.93	131.31	1250.10	11.75%	882.90	24.95%	-0.18%	-8.06%
TATAMOTORS	682.20	3.20	0.47%	65.97	450.60	1179.00	42.14%	535.75	27.34%	-1.11%	-33.51%
TATASTEEL	159.97	2.64	1.68%	217.32	345.65	170.18	6.00%	122.62	30.46%	2.05%	-5.83%
TCS	3207.70	-25.40	-0.79%	29.47	949.09	4592.25	30.15%	3056.05	4.96%	-7.53%	-22.62%
TECHM	1564.20	-43.70	-2.72%	76.16	1202.70	1807.70	13.47%	1209.40	29.34%	-5.08%	6.05%
TITAN	3429.90	12.60	0.37%	5.59	192.20	3867.00	11.30%	2925.00	17.26%	-0.60%	5.67%
TRENT	5414.00	32.00	0.59%	4.90	265.70	8345.00	35.12%	4488.00	20.63%	-5.24%	-4.70%
ULTRACEMCO	12481.00	28.00	0.22%	1.66	207.61	12667.00	1.47%	10047.85	24.22%	8.33%	6.81%
WIPRO	258.75	-4.05	-1.54%	74.79	195.40	324.60	20.29%	228.00	13.49%	-0.03%	-53.05%
ETERNAL	259.75	-2.60	-0.99%	175.42	456.73	304.70	14.75%	194.80	33.34%	4.05%	#VALUE!

Disclaimer / Disclosures

ANALYST CERTIFICATION

I, Mrs. Vaishali Parekh B.com, Research Analyst, author and the name subscribed to this report, hereby certify that all of the views expressed in this research report accurately reflect our views about the subject issuer(s) or securities. We also certify that no part of our compensation was, is, or will be directly or indirectly related to the specific recommendation(s) or view(s) in this report.

Terms & conditions and other disclosures:

Prabhudas Lilladher Pvt. Ltd, Mumbai, India (hereinafter referred to as "PL") is engaged in the business of Stock Broking, Portfolio Manager, Depository Participant and distribution for third party financial products. PL is a subsidiary of Prabhudas Lilladher Advisory Services Pvt Ltd. which has its various subsidiaries engaged in business of commodity broking, investment banking, financial services (margin funding) and distribution of third party financial/other products, details in respect of which are available at www.plindia.com

This document has been prepared by the Research Division of PL and is meant for use by the recipient only as information and is not for circulation. This document is not to be reported or copied or made available to others without prior permission of PL. It should not be considered or taken as an offer to sell or a solicitation to buy or sell any security.

The information contained in this report has been obtained from sources that are considered to be reliable. However, PL has not independently verified the accuracy or completeness of the same. Neither PL nor any of its affiliates, its directors or its employees accepts any responsibility of whatsoever nature for the information, statements and opinion given, made available or expressed herein or for any omission therein.

Recipients of this report should be aware that past performance is not necessarily a guide to future performance and value of investments can go down as well. The suitability or otherwise of any investments will depend upon the recipient's particular circumstances and, in case of doubt, advice should be sought from an independent expert/advisor.

Either PL or its affiliates or its directors or its employees or its representatives or its clients or their relatives may have position(s), make market, act as principal or engage in transactions of securities of companies referred to in this report and they may have used the research material prior to publication.

PL may from time to time solicit or perform investment banking or other services for any company mentioned in this document.

PL is registered as Research Analyst under Securities and Exchange Board of India (Research Analysts) Regulations, 2014 PL submits that no material disciplinary action has been taken on us by any Regulatory Authority impacting Equity Research Analysis activities.

PL or its research analysts or its associates or his relatives do not have any financial interest in the subject company.

PL or its research analysts or its associates or his relatives do not have actual/beneficial ownership of one per cent or more securities of the subject company at the end of the month immediately preceding the date of publication of the research report.

PL or its research analysts or its associates or his relatives do not have any material conflict of interest at the time of publication of the research report.

PL or its associates might have received compensation from the subject company in the past twelve months.

PL or its associates might have managed or co-managed public offering of securities for the subject company in the past twelve months or mandated by the subject company for any other assignment in the past twelve months.

PL or its associates might have received any compensation for investment banking or merchant banking or brokerage services from the subject company in the past twelve months.

PL or its associates might have received any compensation for products or services other than investment banking or merchant banking or brokerage services from the subject company in the past twelve months PL or its associates might have received any compensation or other benefits from the subject company or third party in connection with the research report.

PL encourages independence in research report preparation and strives to minimize conflict in preparation of research report. PL or its analysts did not receive any compensation or other benefits from the subject Company or third party in connection with the preparation of the research report. PL or its Research Analysts do not have any material conflict of interest at the time of publication of this report.

It is confirmed that Mrs.Vaishali Parekh B.com, Research Analyst of this report has not received any compensation from the companies mentioned in the report in the preceding twelve months compensation of our Research Analysts is not based on any specific merchant banking, investment banking or brokerage service transactions.

The Research analysts for this report certifies that all of the views expressed in this report accurately reflect his or her personal views about the subject company or companies and its or their securities, and no part of his or her compensation was, is or will be, directly or indirectly related to specific recommendations or views expressed in this report.

The research analysts for this report has not served as an officer, director or employee of the subject company PL or its research analysts have not engaged in market making activity for the subject company

Our sales people, traders, and other professionals or affiliates may provide oral or written market commentary or trading strategies to our clients that reflect opinions that are contrary to the opinions expressed herein, and our proprietary trading and investing businesses may make investment decisions that are inconsistent with the recommendations expressed herein. In reviewing these materials, you should be aware that any or all of the foregoing, among other things, may give rise to real or potential conflicts of interest.

PL and its associates, their directors and employees may (a) from time to time, have a long or short position in, and buy or sell the securities of the subject company or (b) be engaged in any other transaction involving such securities and earn brokerage or other compensation or act as a market maker in the financial instruments of the subject company or act as an advisor or lender/borrower to the subject company or may have any other potential conflict of interests with respect to any recommendation and other related information and opinions.