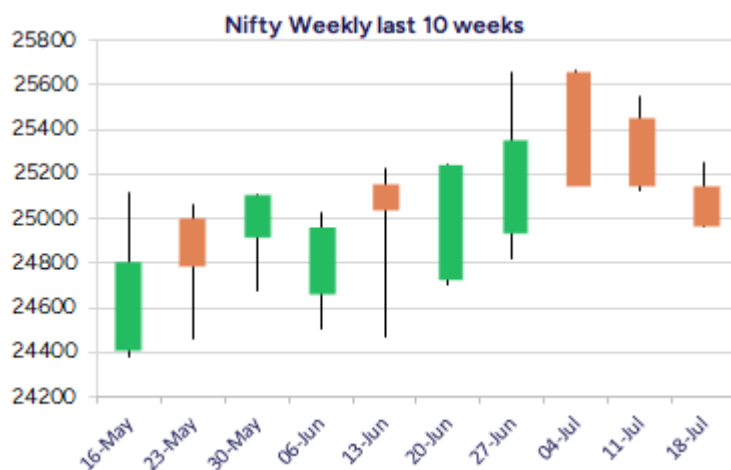
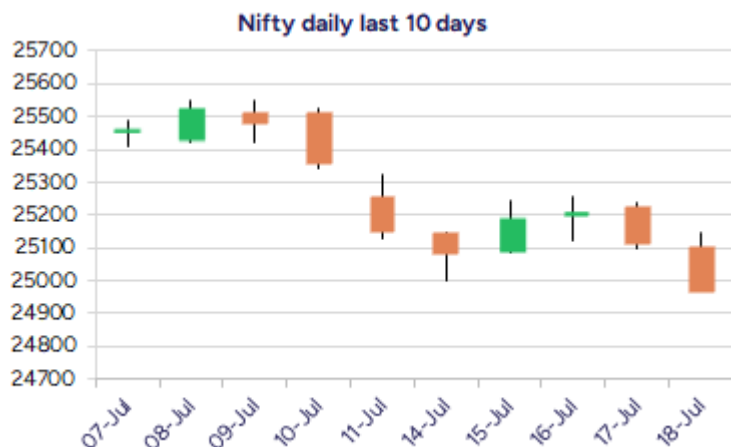


Date: 21st July 2025

* Sensex 81757.73 - 501.51

* Nifty 24968.40 - 143.05

* Bank Nifty 56283.00 - 545.80



*Blue candle → Close rate > Open rate * Red candle → Close rate < Open rate

Market Preview

Nifty slips below the 25000 zone

Nifty amid profit booking witnessed especially from the Financial sector dragged the index to slip below the important 25000 zone, weakening the bias. BankNifty on the back of weak cues from Axis Bank slipped below the 56600 zone with profit booking witnessed and has weakened the bias closing near the 56300 level. The market breadth was weak with the advance decline indicating a ratio of 2:3 at close.

Market Forecast

Nifty daily range 24800-25200

Nifty once again lost control and indicating a lower top formation on the daily chart slipped below the important 25000 zone to slightly weaken the bias and has arrived near the crucial support zone area of the 50EMA level at 24900 which needs to be sustained to maintain the overall trend intact. Also, the base of the ascending channel pattern on the daily chart lies near the 24900 zone which is at stake and the much-awaited results of the heavyweight giants – HDFC Bank and ICICI Bank would be released, which would decide the next course of the market. For the bias to improve, the index would need to move past the 25250 zone decisively.

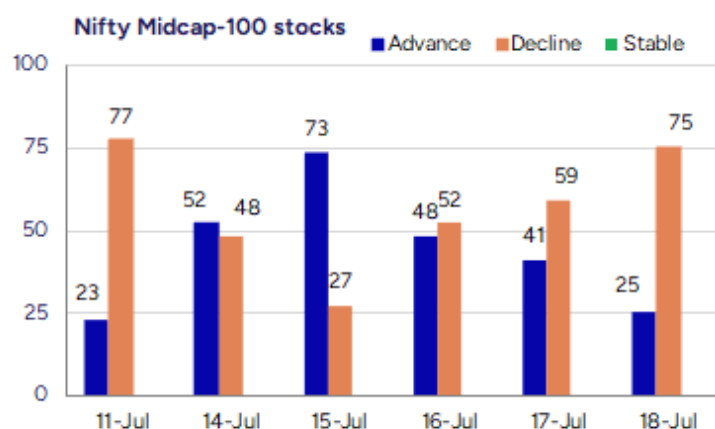
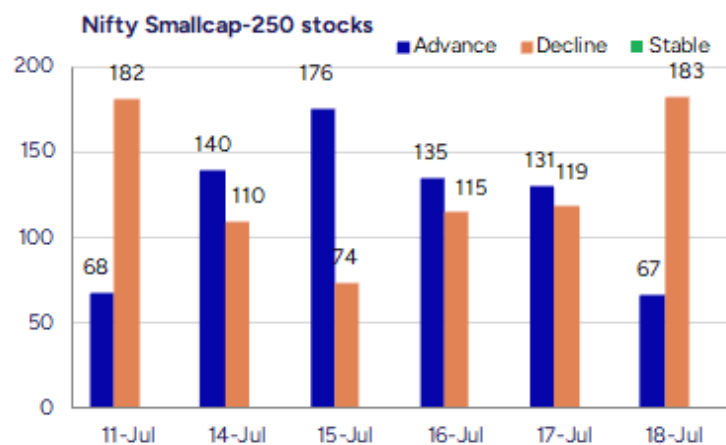
BankNifty, succumbed to heavy profit booking post the weak result outcome of Axis Bank which dragged the index to breach below the near-term support of 56600 zone and has slightly weakened the bias with next major and crucial support positioned near the 50EMA zone at 55900 level which needs to be sustained. On the upside, it would need to breach above the resistance zone of 57600 level and thereafter, expect for fresh higher targets of 58500 and 60000 levels in the coming days, as mentioned earlier.

The support for the day is seen at 24800 levels while the resistance is seen at 25200 levels. BankNifty would have the daily range of 55500-57000 levels.

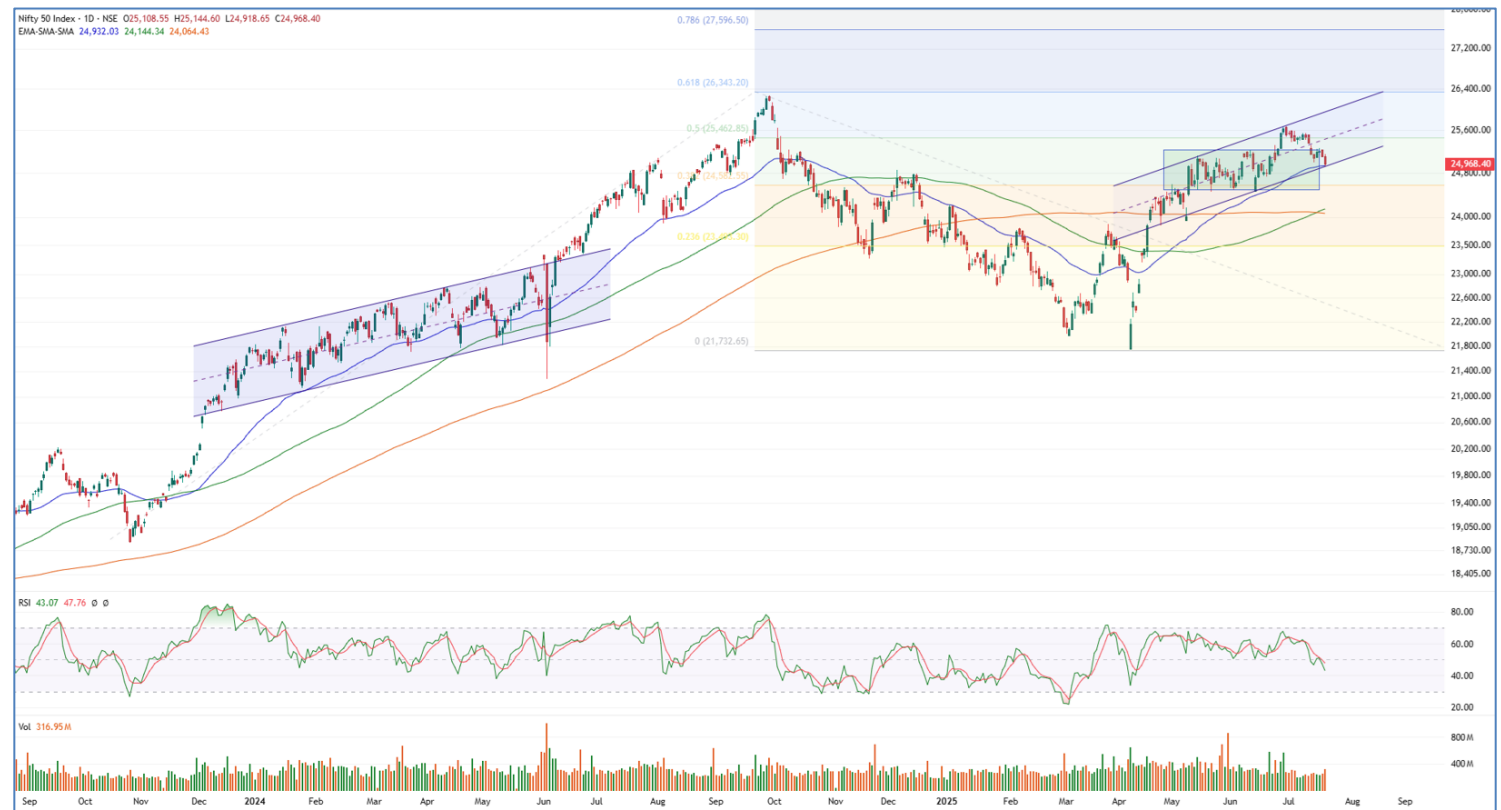
Indices	Period	Closing	% Chng	Trend	Reversal	2 Sup	1 Sup	Pivot	1 Res	2 Res
Nifty	Daily	24968.40	-0.57%	-13	25134.90	25108	25038	25075	25005	25042
	Weekly	25149.85	-1.22%	-2	25405.20	24861	25005	25276	25421	25692
	Monthly	25517.05	3.10%	2	25312.05	24028	24772	25217	25962	26407
Bank Nifty	Daily	56283.00	-0.96%	-2	56931.00	55897	56090	56398	56590	56898
	Weekly	56754.70	-0.49%	-2	57317.20	56174	56464	56902	57192	57630
	Monthly	57312.75	2.80%	3	54910.25	54237	55775	56687	58226	59138
Sensex	Daily	81757.73	-0.61%	-8	82360.55	81174	81466	81900	82192	82627
	Weekly	82500.47	-1.12%	-2	83295.00	81554	82027	82917	83390	84280
	Monthly	83606.46	2.65%	2	81262.65	79027	81317	82703	84992	86378

Gainers - Losers (Nifty 500 Stocks)

Gainers				Losers			
Company Name	Last Price	% Gain	Volume	Company Name	Last Price	% Loss	Volume
Bulkcorp Intern	83.5	19.97	133200	MPS	2444.3	-15.73	417724
Voler Car	112.05	19.2	849600	Valiant Lab	102.79	-11.77	96960
Rajputana Indus	89.35	15.29	246000	Affordable Robo	466.55	-10.82	190407
Guj Mineral	435.3	14.73	47188414	Clean Science	1318.7	-8.75	926127
Manali Petro	79.25	14.66	23028814	Newgen Software	962.6	-6.14	1867286
Bhagyanagar Ind	106.41	13.23	1063271	Alok Industries	20.82	-5.54	49587532
Vimta Labs	525.35	12.75	9218185	Anuh Pharma	94.33	-5.4	264604



Nifty Daily chart with RSI indicator



BankNifty Daily chart with RSI indicator



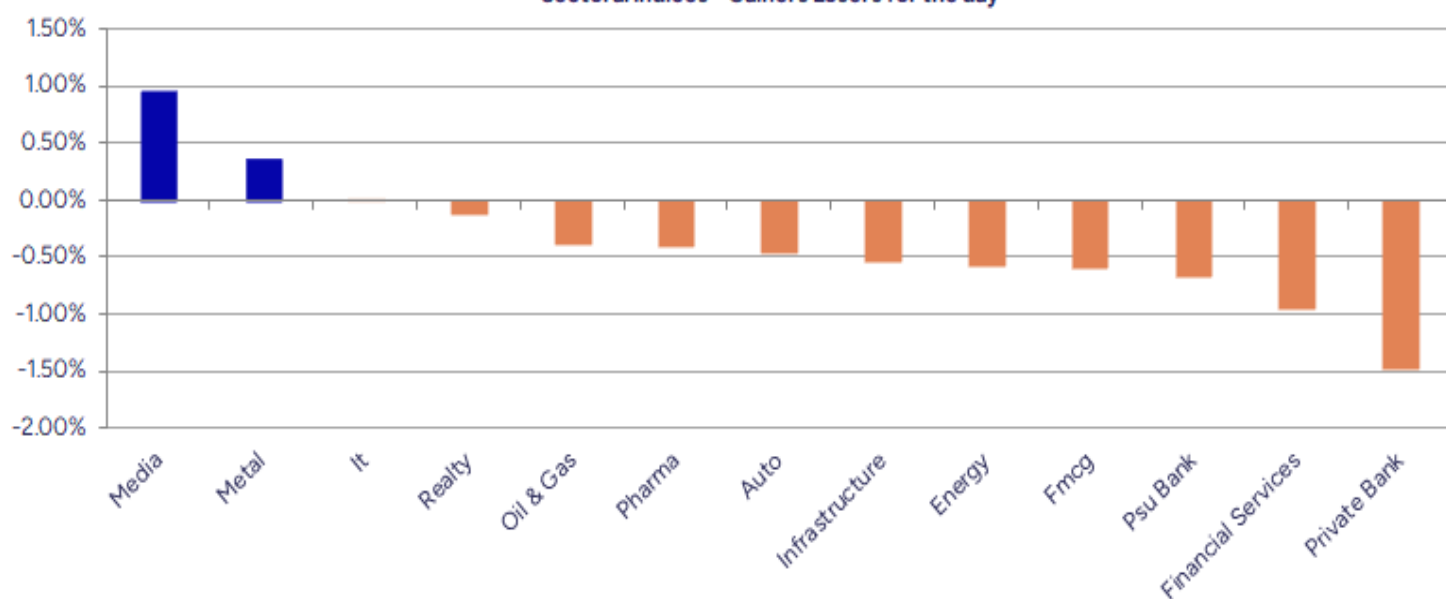
Breakouts - Cross above 200 DMA			
Company Name	LCP	Change %	200 DMA
Rajputana Indus	89.35	8.99	81.98
Capital SFB	309.1	7.42	287.74
Sinclairs Hotel	100.67	4.22	96.59
SBC Exports	16.49	4.10	15.84
Dynemic Product	355.4	3.91	342.04
Felix Industrie	183.05	3.83	176.29
IG Petro	510.8	3.63	492.92
NMDC	71.44	2.29	69.84
Parin Enter	338.45	1.29	334.14
Manugraph Ind	20.37	1.19	20.13
Sintercom India	141.22	0.72	140.21
Sammaan Capital	136.12	0.49	135.45
Trejhara	236.41	0.40	235.46
Chemplast	455.8	0.26	454.6
D.K. Enterprise	72.5	0.17	72.38
Chaman Lal Seti	336.2	0.11	335.82
Best Agrolife	444.2	0.10	443.77
Mohit Ind	31.21	0.10	31.18

* Stocks crossing above its Simple Moving Average (200DMA)

Breakdown - Cross below 200 DMA			
Company Name	LCP	Change %	200 DMA
Clean Science	1318.7	-4.07	1374.63
Valiant Laborat	102.79	-2.71	105.65
Axis Bank	1099.3	-2.08	1122.61
NLC India	233.61	-2.07	238.56
Aarti Surfactan	568.9	-2.01	580.56
Signet Ind	60.52	-1.93	61.71
CG Power	667.6	-1.59	678.4
Strides Pharma	881.8	-1.44	894.69
Brigade Ent	1111.8	-1.41	1127.73
BOMDYEING	168.33	-1.40	170.72
Oriental Hotels	157.14	-1.39	159.36
Alicon Castallo	936.1	-1.36	948.97
ICICI Prudentia	633.8	-1.30	642.16
TTK Healthcare	1324.9	-1.27	1341.96
BF Utilities	815.85	-1.26	826.27
TVS Srichakra	3187.1	-1.24	3227.18
AGI Greenpac	868.05	-1.14	878.07
EPL	234.62	-1.13	237.29

* Stocks crossing below its Simple Moving Average (200DMA)

Sectoral Indices - Gainers Losers for the day



Stocks witnessing a volume surge as compared to their 5 day average volume

Watch out for the stocks that have seen a huge spurt in its share price over the last three days

Volume Shockers - NSE					
Company name	LCP	% Chg	Volume	Avg Vol *	% Chg
Sintercom India	141.22	10.16	652812	7101	9093
Vimta Labs	525.35	12.75	9218185	130732	6951
Sapphire Foods	342.1	-0.12	4642922	68650	6663
Nuvoco Vistas	387.7	1.59	7074959	105255	6622
Guj Mineral	435.3	14.73	47188414	775497	5985
Manali Petro	79.25	14.66	23028814	448312	5037
Tatva Chintan	1000.35	7.03	1523025	30675	4865
Saregama India	509.5	4.6	6491139	145026	4376
LE Travenues Te	217.14	1.65	56479709	1271544	4342
Orissa Minerals	5228.1	10.31	184383	6111	2917
Voler Car	112.05	19.2	849600	30080	2724
Phantom Digital	286.1	4.99	900600	32460	2674
Krishna Institu	761.25	2.64	1550400	59456	2508
Falcon Technopr	15.6	-3.11	273600	11280	2326
MPS	2444.3	-15.73	417724	20094	1979
Capital SFB	309.1	8.53	954512	51405	1757
Indo US Bio-Tec	191.02	10	334668	18905	1670
Rajputana Indus	89.35	15.29	246000	14400	1608
InfoBeans Tech	423.6	7.53	226511	13434	1586
Tega Industries	1938	2.05	401900	24591	1534

* the Average Volume of last 5 days

Price Shockers - NSE				
Company name	LCP	Prv Close	% Chg	Volume
Aditya Ultra	44.45	30	48.17	902000
Voler Car	112.05	86.6	29.39	849600
Indo US Bio-Tec	191.02	154.56	23.59	334668
Deccan Cements	1093	895.85	22.01	285230
Bhagyanagar Ind	106.41	88.14	20.73	1063271
Namo Ewaste	191.15	159.55	19.81	312800
Chemcon Special	232.07	193.88	19.7	255901
Vertoz	92.71	78.13	18.66	0
20 Microns	264.99	224.93	17.81	1441451
Aaron Industrie	407.15	349.4	16.53	29425
Manali Petro	79.25	68.24	16.13	23028814
Radhika Jewel	99.19	85.61	15.86	5552435
Soma Textile	90.54	78.22	15.75	43422
G-Tec Jainx	27.79	24.01	15.74	1949
Kotyark Ind	246.55	213.05	15.72	66700
Shanti Overseas	14.58	12.6	15.71	658180
Shree Rama News	36.94	31.93	15.69	145115
Nacl Industries	301.78	261.46	15.42	1332274
Mirc Electronic	18.29	15.87	15.25	2284257
Borosil Sci	179.59	156.09	15.06	1852922

* the % price rise of the last 3 days

Nifty 50 stocks - Summary Details											
Symbol	LTP	Chng	% Chng	Volume (lacs)	Turnover (crs.)	52w High	Diff with 52w H	52w Low	Diff with 52w L	365 days % chng	30 days % chng
NIFTY 50	24968.40	-143.05	-0.57%	3169.58	26329.39	26277.35	4.98%	21743.65	14.83%	1.04%	2.03%
ADANIENT	2594.20	-22.40	-0.86%	4.80	124.77	3258.00	20.37%	2025.00	28.11%	5.15%	-15.85%
ADANIPTS	1442.10	-10.40	-0.72%	11.48	165.39	1604.95	10.15%	995.65	44.84%	4.32%	-3.11%
APOLLOHOSP	7310.00	-40.50	-0.55%	1.93	140.72	7635.00	4.26%	6001.00	21.81%	4.91%	13.90%
ASIANPAINT	2380.00	-18.90	-0.79%	6.00	142.97	3394.90	29.89%	2124.75	12.01%	5.92%	-19.35%
AXISBANK	1098.70	-61.10	-5.27%	380.53	4211.13	1318.60	16.68%	933.50	17.70%	-4.55%	-11.06%
BAJAJ-AUTO	8339.00	9.00	0.11%	2.68	223.74	12774.00	34.72%	7089.35	17.63%	-1.94%	-14.29%
BAJAJFINSV	2027.10	0.60	0.03%	9.96	201.29	2135.00	5.05%	1523.25	33.08%	1.16%	25.90%
BAJFINANCE	941.50	18.20	1.97%	78.94	736.88	978.80	3.81%	642.50	46.54%	0.03%	-86.92%
BEL	394.60	-9.60	-2.38%	211.68	842.33	436.00	9.50%	240.25	64.25%	0.61%	23.93%
BHARTIARTL	1902.00	-11.90	-0.62%	46.44	882.53	2045.80	7.03%	1422.60	33.70%	4.05%	31.60%
CIPLA	1482.50	0.10	0.01%	10.02	148.02	1702.05	12.90%	1335.00	11.05%	-1.40%	-1.85%
COALINDIA	388.60	2.70	0.70%	51.72	200.15	543.55	28.51%	349.25	11.27%	-1.38%	-24.70%
DRREDDY	1258.30	-4.80	-0.38%	6.91	86.91	1421.49	11.48%	1020.00	23.36%	-4.22%	-80.99%
EICHERMOT	5620.50	-29.50	-0.52%	2.55	143.70	5906.50	4.84%	4508.75	24.66%	5.79%	14.93%
GRASIM	2726.50	-39.80	-1.44%	7.97	217.77	2896.00	5.85%	2276.95	19.74%	3.55%	-2.16%
HCLTECH	1549.10	17.20	1.12%	39.02	601.36	2012.20	23.01%	1302.75	18.91%	-10.74%	-1.63%
HDFCBANK	1956.00	-30.90	-1.56%	80.64	1587.58	2027.10	3.51%	1588.05	23.17%	2.97%	22.67%
HDFCLIFE	738.45	-13.35	-1.78%	34.50	255.93	820.75	10.03%	584.30	26.38%	-2.86%	16.24%
HEROMOTOCO	4401.00	-42.60	-0.96%	3.71	163.94	6246.25	29.54%	3344.00	31.61%	1.66%	-20.34%
HINDALCO	675.55	1.00	0.15%	34.01	229.74	772.65	12.57%	546.45	23.63%	5.12%	-2.35%
HINDUNILVR	2488.10	-21.70	-0.86%	7.71	192.18	3035.00	18.02%	2136.00	16.48%	7.78%	-6.65%
ICICIBANK	1426.70	8.00	0.56%	112.97	1602.97	1471.60	3.05%	1153.00	23.74%	-0.32%	14.42%
INDUSINDBK	874.00	8.90	1.03%	26.22	228.01	1498.00	41.66%	606.00	44.22%	6.91%	-40.17%
INFY	1588.20	4.70	0.30%	51.61	818.98	2006.45	20.85%	1307.00	21.51%	-3.44%	-8.26%
ITC	422.00	-1.95	-0.46%	67.30	284.15	528.50	20.15%	390.15	8.16%	1.57%	-8.94%
JIOFIN	316.40	-1.75	-0.55%	297.75	946.54	363.00	12.84%	198.65	59.28%	9.78%	-7.58%
JSWSTEEL	1044.80	10.60	1.02%	16.94	175.03	1074.90	2.80%	854.15	22.32%	3.46%	10.69%
KOTAKBANK	2132.00	-36.30	-1.67%	25.67	549.98	2301.90	7.38%	1679.05	26.98%	1.59%	20.25%
LT	3468.70	-5.30	-0.15%	18.19	629.69	3963.50	12.48%	2965.30	16.98%	-4.09%	-4.47%
M&M	3199.00	4.00	0.13%	20.40	653.46	3270.95	2.20%	2425.00	31.92%	6.25%	15.90%
MARUTI	12424.00	-52.00	-0.42%	1.24	154.14	13680.00	9.18%	10725.00	15.84%	-0.94%	-1.29%
NESTLEIND	2472.00	22.90	0.94%	4.50	110.49	2778.00	11.02%	2110.00	17.16%	3.69%	-6.07%
NTPC	342.00	-0.65	-0.19%	63.70	217.85	448.45	23.74%	292.80	16.80%	2.22%	-9.94%
ONGC	246.14	2.27	0.93%	102.90	252.82	345.00	28.66%	205.00	20.07%	-3.35%	-24.42%
POWERGRID	293.90	-2.70	-0.91%	87.02	257.39	366.25	19.75%	247.30	18.84%	2.79%	-13.39%
RELIANCE	1476.00	-0.40	-0.03%	102.95	1518.78	1593.90	7.40%	1114.85	32.39%	3.16%	-53.17%
SBILIFE	1787.20	-15.60	-0.87%	16.00	284.33	1936.00	7.69%	1372.55	30.21%	0.14%	11.19%
SBIN	823.00	-6.00	-0.72%	153.88	1267.01	899.00	8.45%	680.00	21.03%	4.63%	-5.87%
SHRIRAMFIN	645.10	-20.35	-3.06%	65.71	428.73	730.45	11.68%	493.35	30.76%	0.07%	-76.35%
SUNPHARMA	1694.40	-9.00	-0.53%	12.54	212.46	1960.35	13.57%	1553.05	9.10%	3.22%	7.86%
TATACONSUM	1097.90	-7.90	-0.71%	8.44	92.76	1250.10	12.18%	882.90	24.35%	3.19%	-5.99%
TATAMOTORS	680.45	-1.25	-0.18%	55.58	378.82	1179.00	42.29%	535.75	27.01%	1.03%	-33.24%
TATASTEEL	162.50	2.60	1.63%	307.25	497.01	170.18	4.51%	122.62	32.52%	4.78%	-4.29%
TCS	3189.60	-19.60	-0.61%	34.32	1098.74	4592.25	30.54%	3056.05	4.37%	-8.71%	-23.20%
TECHM	1550.00	-13.70	-0.88%	36.19	559.89	1807.70	14.26%	1209.40	28.16%	-9.01%	3.13%
TITAN	3398.00	-35.30	-1.03%	2.93	100.02	3867.00	12.13%	2925.00	16.17%	0.81%	6.16%
TRENT	5367.00	-50.50	-0.93%	4.18	225.71	8345.00	35.69%	4488.00	19.59%	-3.71%	-4.07%
ULTRACEMCO	12498.00	3.00	0.02%	0.98	122.84	12667.00	1.33%	10047.85	24.38%	9.77%	7.17%
WIPRO	266.35	5.75	2.21%	303.19	811.72	324.60	17.95%	228.00	16.82%	-0.88%	-53.44%
ETERNAL	257.70	-1.95	-0.75%	135.82	350.02	304.70	15.43%	194.80	32.29%	5.02%	#VALUE!

Disclaimer / Disclosures

ANALYST CERTIFICATION

I, Mrs. Vaishali Parekh B.com, Research Analyst, author and the name subscribed to this report, hereby certify that all of the views expressed in this research report accurately reflect our views about the subject issuer(s) or securities. We also certify that no part of our compensation was, is, or will be directly or indirectly related to the specific recommendation(s) or view(s) in this report.

Terms & conditions and other disclosures:

Prabhudas Lilladher Pvt. Ltd, Mumbai, India (hereinafter referred to as "PL") is engaged in the business of Stock Broking, Portfolio Manager, Depository Participant and distribution for third party financial products. PL is a subsidiary of Prabhudas Lilladher Advisory Services Pvt Ltd. which has its various subsidiaries engaged in business of commodity broking, investment banking, financial services (margin funding) and distribution of third party financial/other products, details in respect of which are available at www.plindia.com

This document has been prepared by the Research Division of PL and is meant for use by the recipient only as information and is not for circulation. This document is not to be reported or copied or made available to others without prior permission of PL. It should not be considered or taken as an offer to sell or a solicitation to buy or sell any security.

The information contained in this report has been obtained from sources that are considered to be reliable. However, PL has not independently verified the accuracy or completeness of the same. Neither PL nor any of its affiliates, its directors or its employees accepts any responsibility of whatsoever nature for the information, statements and opinion given, made available or expressed herein or for any omission therein.

Recipients of this report should be aware that past performance is not necessarily a guide to future performance and value of investments can go down as well. The suitability or otherwise of any investments will depend upon the recipient's particular circumstances and, in case of doubt, advice should be sought from an independent expert/advisor.

Either PL or its affiliates or its directors or its employees or its representatives or its clients or their relatives may have position(s), make market, act as principal or engage in transactions of securities of companies referred to in this report and they may have used the research material prior to publication.

PL may from time to time solicit or perform investment banking or other services for any company mentioned in this document.

PL is registered as Research Analyst under Securities and Exchange Board of India (Research Analysts) Regulations, 2014 PL submits that no material disciplinary action has been taken on us by any Regulatory Authority impacting Equity Research Analysis activities.

PL or its research analysts or its associates or his relatives do not have any financial interest in the subject company.

PL or its research analysts or its associates or his relatives do not have actual/beneficial ownership of one per cent or more securities of the subject company at the end of the month immediately preceding the date of publication of the research report.

PL or its research analysts or its associates or his relatives do not have any material conflict of interest at the time of publication of the research report.

PL or its associates might have received compensation from the subject company in the past twelve months.

PL or its associates might have managed or co-managed public offering of securities for the subject company in the past twelve months or mandated by the subject company for any other assignment in the past twelve months.

PL or its associates might have received any compensation for investment banking or merchant banking or brokerage services from the subject company in the past twelve months.

PL or its associates might have received any compensation for products or services other than investment banking or merchant banking or brokerage services from the subject company in the past twelve months PL or its associates might have received any compensation or other benefits from the subject company or third party in connection with the research report.

PL encourages independence in research report preparation and strives to minimize conflict in preparation of research report. PL or its analysts did not receive any compensation or other benefits from the subject Company or third party in connection with the preparation of the research report. PL or its Research Analysts do not have any material conflict of interest at the time of publication of this report.

It is confirmed that Mrs.Vaishali Parekh B.com, Research Analyst of this report has not received any compensation from the companies mentioned in the report in the preceding twelve months compensation of our Research Analysts is not based on any specific merchant banking, investment banking or brokerage service transactions.

The Research analysts for this report certifies that all of the views expressed in this report accurately reflect his or her personal views about the subject company or companies and its or their securities, and no part of his or her compensation was, is or will be, directly or indirectly related to specific recommendations or views expressed in this report.

The research analysts for this report has not served as an officer, director or employee of the subject company PL or its research analysts have not engaged in market making activity for the subject company

Our sales people, traders, and other professionals or affiliates may provide oral or written market commentary or trading strategies to our clients that reflect opinions that are contrary to the opinions expressed herein, and our proprietary trading and investing businesses may make investment decisions that are inconsistent with the recommendations expressed herein. In reviewing these materials, you should be aware that any or all of the foregoing, among other things, may give rise to real or potential conflicts of interest.

PL and its associates, their directors and employees may (a) from time to time, have a long or short position in, and buy or sell the securities of the subject company or (b) be engaged in any other transaction involving such securities and earn brokerage or other compensation or act as a market maker in the financial instruments of the subject company or act as an advisor or lender/borrower to the subject company or may have any other potential conflict of interests with respect to any recommendation and other related information and opinions.