

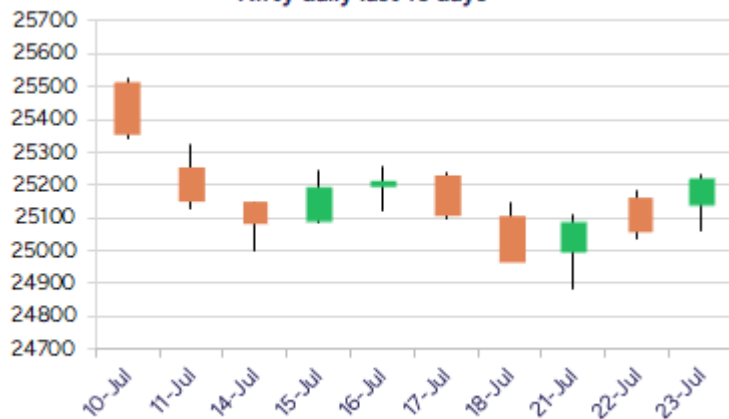
Date: 24<sup>th</sup> July 2025

\* Sensex 82726.64 + 539.83

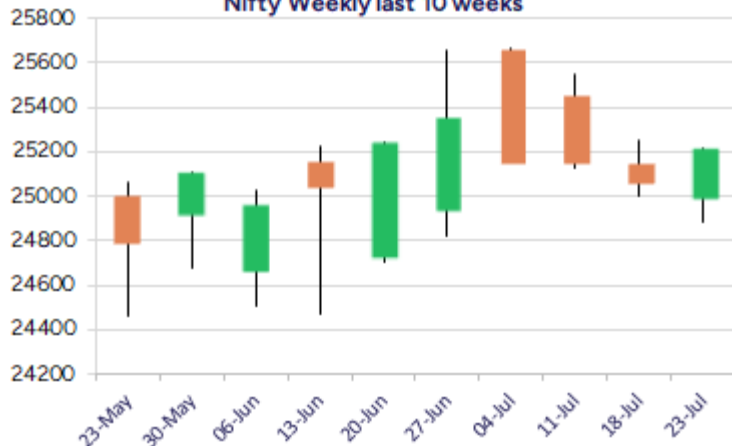
\* Nifty 25219.90 + 159.00

\* Bank Nifty 57210.45 + 454.45

Nifty daily last 10 days



Nifty Weekly last 10 weeks



\*Blue candle → Close rate > Open rate \* Red candle → Close rate < Open rate

## Market Preview

### Nifty surges ahead; bias improves

Nifty witnessed a decent pickup with bias maintained positive and arrived near the hurdle of 25250 zone which needs to be breached decisively to make way for further targets of 25700 zone in the coming days. BankNifty has shown resilience and has picked up with overall bias improving and is expected to achieve new heights in the coming days. The market breadth remained flat with the advance decline indicated a neutral ratio at close.

## Market Forecast

### Nifty daily range 25100-25400

Nifty once again indicated a positive move with overall strong bias visible and has arrived near the near-term resistance hurdle of 25250 zone which needs to be breached decisively in the coming sessions. With optimistic approach maintained, one can expect for further targets of 25500 and 25700 levels achievable with most of the frontline stocks are well poised for further gains which can help the index to gain further with 24900 zone shall remain as the major and crucial support for the index.

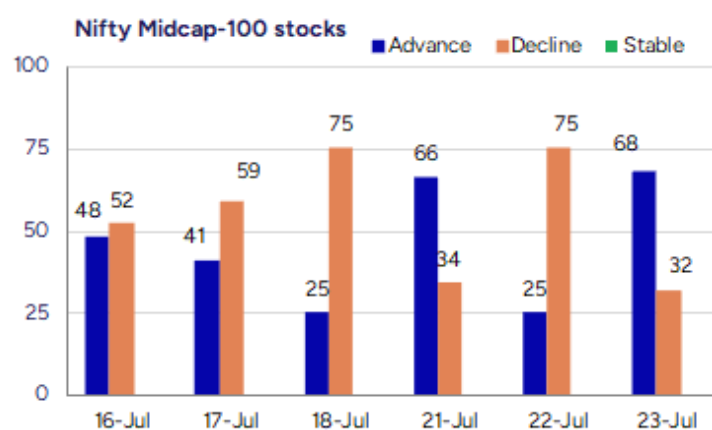
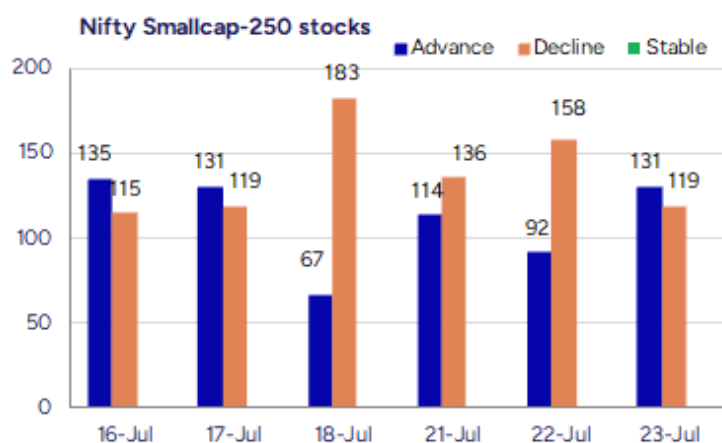
BankNifty, once again picked up momentum resisting near the 57300 zone which needs to be breached above and can expect for making new highs in the coming days with higher targets of 58500 and 60000 levels achievable. The overall bias and sentiment has much improved with the heavyweight banking stocks technically looking good and can carry on with the positive move further ahead.

The support for the day is seen at 25100 levels while the resistance is seen at 25400 levels. BankNifty would have the daily range of 56700-57800 levels.

Indices	Period	Closing	% Chng	Trend	Reversal	2 Sup	1 Sup	Pivot	1 Res	2 Res
Nifty	Daily	25219.00	0.63%	1	25105.90	25344	25281	25171	25109	24999
	Weekly	25149.85	-1.22%	-2	25405.20	24861	25005	25276	25421	25692
	Monthly	25517.05	3.10%	2	25312.05	24028	24772	25217	25962	26407
Bank Nifty	Daily	57210.45	0.80%	1	56989.15	56525	56868	57058	57401	57592
	Weekly	56754.70	-0.49%	-2	57317.20	56174	56464	56902	57192	57630
	Monthly	57312.75	2.80%	3	54910.25	54237	55775	56687	58226	59138
Sensex	Daily	82726.64	0.66%	1	82261.90	82091	82409	82598	82915	83104
	Weekly	82500.47	-1.12%	-2	83295.00	81554	82027	82917	83390	84280
	Monthly	83606.46	2.65%	2	81262.65	79027	81317	82703	84992	86378

**Gainers - Losers ( Nifty 500 Stocks )**

Gainers				Losers			
Company Name	Last Price	% Gain	Volume	Company Name	Last Price	% Loss	Volume
Worth Periphera	172.83	20	477115	Mahindra Logist	358.1	-12.16	638419
InfoBeans Tech	538.25	20	1736049	Saroja Pharma	36.05	-9.88	1600
Jayaswal Neco	42.98	19.99	70468355	Blue Jet	816.7	-9.87	4367766
Sunrest	60.5	19.45	14400	Arfin India	35.01	-8.83	228994
Manaksia Alumin	33.49	17.1	2996132	Ideaforge Tech	500.9	-8.08	1111052
Rossell Techsys	604.25	16.65	1315973	Jana SFB	454.8	-7.54	1149167
KIOCL	358.8	15.48	10004340	Lodha Developer	1334	-7.51	17782149



## Nifty Daily chart with RSI indicator



## BankNifty Daily chart with RSI indicator



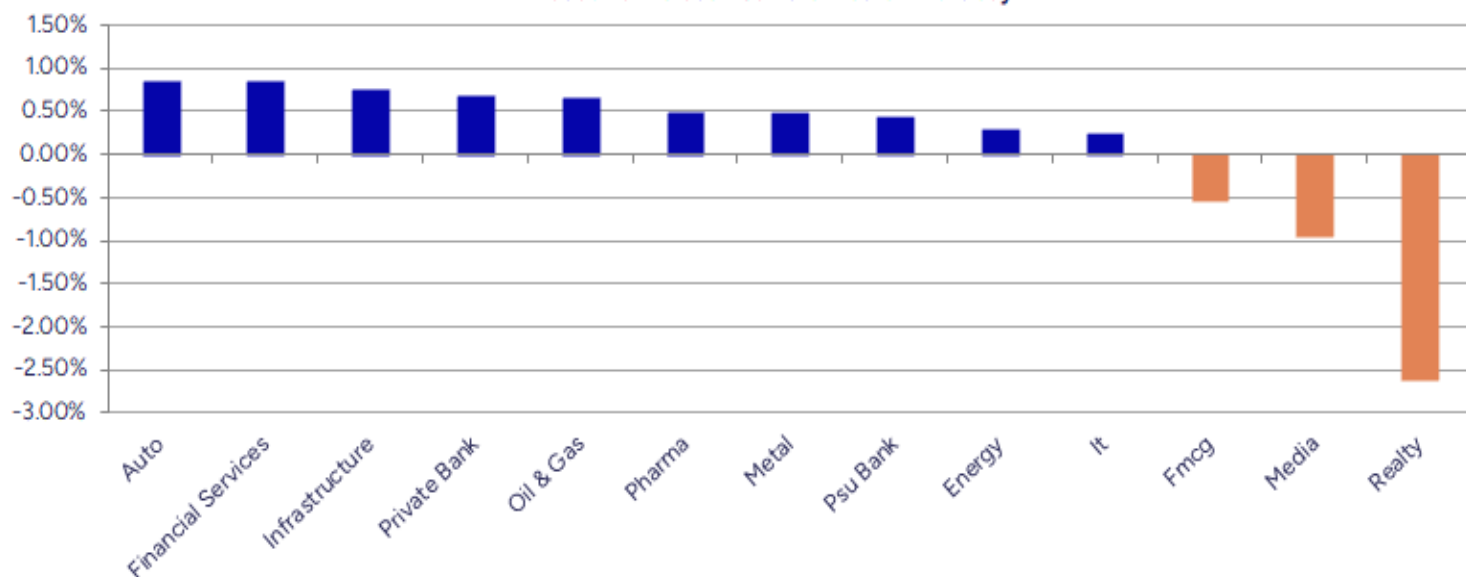
Breakouts - Cross above 200 DMA			
Company Name	LCP	Change %	200 DMA
Worth Periphere	172.83	17.98	146.49
KIOCL	358.8	15.32	311.14
BOMDYEING	188.19	10.77	169.89
Jayaswal Neco	42.98	10.09	39.04
Coral India Fin	50.12	8.89	46.03
INFOLLION	472.4	7.89	437.87
Manaksia	83.03	6.29	78.12
PNB Gilts	106.98	5.48	101.42
Banka Bioloo	92.02	5.12	87.54
Ausom Enterp	107.92	4.80	102.98
Radhika Jewel	103.08	3.62	99.48
Strides Pharma	918.9	3.61	886.88
Panacea Biotec	432.2	3.41	417.96
Premier Energie	1089.9	3.09	1057.2
Greenpanel Ind	315	2.35	307.78
Somany Ceramics	563.45	2.00	552.38
Damodar Ind	38.58	1.82	37.89
Veekayem Fashio	252.2	1.81	247.71

\* Stocks crossing above its Simple Moving Average (200DMA)

Breakdown - Cross below 200 DMA			
Company Name	LCP	Change %	200 DMA
Aurionpro Solut	1451.7	-4.90	1526.52
Sagardeep Alloy	28.35	-3.96	29.52
Tainwala Chem	234.81	-3.93	244.41
Ideaforge Tech	500.9	-3.63	519.77
Balkrishna	21.12	-2.63	21.69
Mastek	2549.3	-1.98	2600.81
PCBL Chemical	406.45	-1.91	414.36
Persistent	5605.5	-1.88	5713.07
Honasa Consumer	274.25	-1.82	279.34
Ajmera Realty	892.5	-1.68	907.72
Jullundur Motor	91.64	-1.44	92.98
EPM	99.64	-1.23	100.88
NDTV	147.33	-1.16	149.06
Parsvnath	20.79	-1.14	21.03
Triveni Turbine	629	-1.08	635.87
Thermax	3869.2	-1.00	3908.37
Hi-Green Carbon	241.3	-0.99	243.71
Country Club	18.04	-0.88	18.2

\* Stocks crossing below its Simple Moving Average (200DMA)

Sectoral Indices - Gainers Losers for the day



Stocks witnessing a volume surge as compared to their 5 day average volume

Watch out for the stocks that have seen a huge spurt in its share price over the last three days

Volume Shockers - NSE					
Company name	LCP	% Chg	Volume	Avg Vol *	% Chg
Sapphire Foods	344.2	2.64	6745119	68650	9725
BOMDYEING	188.19	13.96	96375153	1060583	8987
Worth Periphera	172.83	20	477115	6897	6817
Motor and Gen F	28.33	6.58	488274	9125	5251
Manaksia	83.03	10.96	2073495	40762	4987
Prime Sec	282.7	1.58	1241781	24453	4978
Hisar Metal	208.5	6.27	113291	3191	3450
CreditAccess Gr	1354.9	5.88	6124307	198052	2992
KIOCL	358.8	15.48	10004340	361015	2671
Lodha Developer	1334	-7.51	17782149	646463	2651
Coral India Fin	50.12	12	606695	25098	2317
BEW Engineering	165.35	4.98	25500	1125	2167
Oneclick Logi.	211.6	0.79	90000	4320	1983
Blue Jet Health	816.7	-9.87	4367766	212985	1951
PNB Gilts	106.98	8.24	10785947	526111	1950
InfoBeans Tech	538.25	20	1736049	93810	1751
Krishival Foods	394.7	-0.1	20144	1200	1579
Lakshmi Prec	5.17	4.87	16997	1057	1507
Grill Splendour	138	-4.83	60000	3840	1463
Pitti Engineeri	967	-6.55	839909	60669	1284

\* the Average Volume of last 5 days

Price Shockers - NSE				
Company name	LCP	Prv Close	% Chg	Volume
Voler Car	162.25	112.05	44.8	344000
Banka Bioloo	92.02	69.15	33.07	36661
InfoBeans Tech	538.25	423.6	27.07	1736049
Hi-Green Carbon	241.3	193.65	24.61	90400
Lord's Chloro	224.14	180.72	24.03	1170382
KIOCL	358.8	290.7	23.43	10004340
SML Isuzu	4039.2	3309	22.07	1180434
Arihant Capital	104.69	86.53	20.99	4308023
Tilaknagar Ind	473.25	396.75	19.28	13905772
Worth Periphera	172.83	144.93	19.25	477115
Mcleod	43.77	36.83	18.84	12005664
Wise Travel	194.35	164.5	18.15	39500
Manaksia Alumin	33.49	28.46	17.67	2996132
Paradeep Phosp	200.15	171.29	16.85	46325471
Soma Textile	104.8	90.54	15.75	119507
Blue Coast	35.91	31.03	15.73	739
Veritaas Advert	86.6	74.95	15.54	10800
Sundaram Brake	934.45	818	14.24	57918
Swelect Energy	669	587.65	13.84	60778
Bohra Industrie	32.08	28.31	13.32	130272

\* the % price rise of the last 3 days



Nifty 50 stocks - Summary Details											
Symbol	LTP	Chng	% Chng	Volume (lacs)	Turnover (crs.)	52w High	Diff with 52w H	52w Low	Diff with 52w L	365 days % chng	30 days % chng
NIFTY 50	25219.90	159.00	0.63%	2715.20	23040.48	26277.35	4.02%	21743.65	15.99%	-0.21%	2.25%
ADANIENT	2615.50	27.70	1.07%	3.16	82.67	3258.00	19.72%	2025.00	29.16%	5.69%	-13.76%
ADANIPTS	1423.30	2.60	0.18%	7.40	105.40	1604.95	11.32%	995.65	42.95%	5.29%	-3.18%
APOLLOHOSP	7389.00	142.50	1.97%	5.09	373.08	7635.00	3.22%	6001.00	23.13%	2.59%	13.19%
ASIANPAINT	2381.20	16.00	0.68%	3.69	87.22	3394.90	29.86%	2124.75	12.07%	3.48%	-19.39%
AXISBANK	1105.90	7.90	0.72%	66.34	733.07	1292.35	14.43%	933.50	18.47%	-10.05%	-14.39%
BAJAJ-AUTO	8394.00	99.00	1.19%	1.95	163.20	12774.00	34.29%	7089.35	18.40%	-0.91%	-11.85%
BAJAJFINSV	2061.00	21.40	1.05%	8.78	180.25	2135.00	3.47%	1523.25	35.30%	2.69%	25.04%
BAJFINANCE	968.00	15.45	1.62%	96.95	936.00	978.80	1.10%	642.50	50.66%	5.25%	-86.16%
BEL	400.60	-2.50	-0.62%	104.13	415.75	436.00	8.12%	240.25	66.74%	-1.26%	29.07%
BHARTIARTL	1948.70	41.90	2.20%	51.94	1003.49	2045.80	4.75%	1422.60	36.98%	-1.54%	30.12%
CIPLA	1472.80	8.40	0.57%	12.68	186.35	1702.05	13.47%	1335.00	10.32%	-2.35%	-1.72%
COALINDIA	390.90	1.80	0.46%	36.71	143.44	543.55	28.08%	349.25	11.93%	0.01%	-20.79%
DRREDDY	1248.00	8.00	0.65%	10.88	134.91	1421.49	12.20%	1020.00	22.35%	-6.44%	-81.69%
EICHERMOT	5448.50	9.00	0.17%	3.44	187.36	5906.50	7.75%	4508.75	20.84%	-1.55%	11.98%
GRASIM	2703.70	-19.00	-0.70%	3.74	101.44	2896.00	6.64%	2276.95	18.74%	0.37%	-3.16%
HCLTECH	1528.80	8.70	0.57%	34.72	530.15	2012.20	24.02%	1302.75	17.35%	-12.63%	-3.61%
HDFCBANK	2024.50	17.40	0.87%	68.17	1377.09	2029.80	0.26%	1588.05	27.48%	2.16%	22.19%
HDFCLIFE	762.65	-0.65	-0.09%	13.13	100.10	820.75	7.08%	584.30	30.52%	-2.01%	19.75%
HEROMOTOCO	4369.10	26.70	0.61%	3.77	164.07	6246.25	30.05%	3344.00	30.65%	0.09%	-20.51%
HINDALCO	694.00	3.95	0.57%	36.41	252.27	772.65	10.18%	546.45	27.00%	6.30%	2.64%
HINDUNILVR	2456.80	-22.90	-0.92%	13.21	324.01	3035.00	19.05%	2136.00	15.02%	7.52%	-9.34%
ICICIBANK	1486.60	13.00	0.88%	119.74	1775.77	1490.00	0.23%	1153.00	28.93%	3.26%	18.73%
INDUSINDBK	851.25	8.05	0.95%	26.24	222.70	1498.00	43.17%	606.00	40.47%	0.35%	-40.76%
INFY	1558.90	-12.00	-0.76%	80.29	1268.87	2006.45	22.31%	1307.00	19.27%	-3.20%	-13.25%
ITC	415.00	-1.00	-0.24%	121.96	506.18	528.50	21.48%	390.15	6.37%	-0.61%	-10.83%
JIOFIN	315.00	4.20	1.35%	97.27	305.12	363.00	13.22%	198.65	58.57%	5.62%	-8.84%
JSWSTEEL	1036.50	5.80	0.56%	11.92	122.91	1074.90	3.57%	854.15	21.35%	2.50%	16.00%
KOTAKBANK	2165.40	5.20	0.24%	27.91	605.32	2301.90	5.93%	1679.05	28.97%	-0.44%	22.91%
LT	3483.30	18.70	0.54%	11.92	413.76	3963.50	12.12%	2965.30	17.47%	-5.39%	-5.12%
M&M	3265.00	7.80	0.24%	21.60	707.13	3303.00	1.15%	2425.00	34.64%	2.29%	16.13%
MARUTI	12638.00	146.00	1.17%	3.42	432.61	13680.00	7.62%	10725.00	17.84%	-2.34%	-1.18%
NESTLEIND	2450.00	6.50	0.27%	3.60	88.21	2778.00	11.81%	2110.00	16.11%	3.52%	-5.56%
NTPC	342.75	1.90	0.56%	50.58	173.42	448.45	23.57%	292.80	17.06%	1.69%	-8.74%
ONGC	245.80	-0.61	-0.25%	73.55	180.38	345.00	28.75%	205.00	19.90%	-2.18%	-23.19%
POWERGRID	299.00	1.20	0.40%	53.11	158.67	366.25	18.36%	247.30	20.91%	1.60%	-12.05%
RELIANCE	1425.00	12.20	0.86%	83.54	1187.48	1551.00	8.12%	1114.85	27.82%	-3.64%	-52.93%
SBILIFE	1805.80	-3.20	-0.18%	5.56	100.41	1936.00	6.73%	1372.55	31.57%	-0.10%	11.59%
SBIN	820.05	5.05	0.62%	154.70	1263.92	895.00	8.37%	680.00	20.60%	2.37%	-7.05%
SHRIRAMFIN	654.00	13.85	2.16%	51.92	335.95	730.45	10.47%	493.35	32.56%	-3.93%	-77.36%
SUNPHARMA	1685.00	7.00	0.42%	12.29	206.61	1960.35	14.05%	1553.05	8.50%	0.77%	5.71%
TATACONSUM	1064.00	-20.80	-1.92%	15.08	160.31	1250.10	14.89%	882.90	20.51%	-1.40%	-9.96%
TATAMOTORS	690.90	17.50	2.60%	144.60	995.94	1179.00	41.40%	535.75	28.96%	-0.41%	-32.87%
TATASTEEL	162.51	-0.53	-0.33%	142.86	232.88	170.18	4.51%	122.62	32.53%	7.28%	1.70%
TCS	3175.00	15.40	0.49%	19.23	609.43	4592.25	30.86%	3056.05	3.89%	-8.04%	-26.30%
TECHM	1544.30	-2.90	-0.19%	28.87	445.78	1807.70	14.57%	1209.40	27.69%	-8.78%	3.45%
TITAN	3467.50	-4.90	-0.14%	5.85	202.74	3867.00	10.33%	2925.00	18.55%	-1.32%	6.70%
TRENT	5369.50	9.00	0.17%	5.21	279.15	8345.00	35.66%	4488.00	19.64%	-9.11%	2.88%
ULTRACEMCO	12378.00	-74.00	-0.59%	1.90	235.17	12714.00	2.64%	10047.85	23.19%	8.68%	8.13%
WIPRO	261.00	1.30	0.50%	65.08	169.36	324.60	19.59%	228.00	14.47%	-2.57%	-48.66%
ETERNAL	302.25	2.45	0.82%	689.13	2072.96	311.25	2.89%	194.80	55.16%	18.34%	#VALUE!

## Disclaimer / Disclosures

### ANALYST CERTIFICATION

I, Mrs. Vaishali Parekh B.com, Research Analyst, author and the name subscribed to this report, hereby certify that all of the views expressed in this research report accurately reflect our views about the subject issuer(s) or securities. We also certify that no part of our compensation was, is, or will be directly or indirectly related to the specific recommendation(s) or view(s) in this report.

Terms & conditions and other disclosures:

Prabhudas Lilladher Pvt. Ltd, Mumbai, India (hereinafter referred to as "PL") is engaged in the business of Stock Broking, Portfolio Manager, Depository Participant and distribution for third party financial products. PL is a subsidiary of Prabhudas Lilladher Advisory Services Pvt Ltd. which has its various subsidiaries engaged in business of commodity broking, investment banking, financial services (margin funding) and distribution of third party financial/other products, details in respect of which are available at [www.plindia.com](http://www.plindia.com)

This document has been prepared by the Research Division of PL and is meant for use by the recipient only as information and is not for circulation. This document is not to be reported or copied or made available to others without prior permission of PL. It should not be considered or taken as an offer to sell or a solicitation to buy or sell any security.

The information contained in this report has been obtained from sources that are considered to be reliable. However, PL has not independently verified the accuracy or completeness of the same. Neither PL nor any of its affiliates, its directors or its employees accepts any responsibility of whatsoever nature for the information, statements and opinion given, made available or expressed herein or for any omission therein.

Recipients of this report should be aware that past performance is not necessarily a guide to future performance and value of investments can go down as well. The suitability or otherwise of any investments will depend upon the recipient's particular circumstances and, in case of doubt, advice should be sought from an independent expert/advisor.

Either PL or its affiliates or its directors or its employees or its representatives or its clients or their relatives may have position(s), make market, act as principal or engage in transactions of securities of companies referred to in this report and they may have used the research material prior to publication.

PL may from time to time solicit or perform investment banking or other services for any company mentioned in this document.

PL is registered as Research Analyst under Securities and Exchange Board of India (Research Analysts) Regulations, 2014 PL submits that no material disciplinary action has been taken on us by any Regulatory Authority impacting Equity Research Analysis activities.

PL or its research analysts or its associates or his relatives do not have any financial interest in the subject company.

PL or its research analysts or its associates or his relatives do not have actual/beneficial ownership of one per cent or more securities of the subject company at the end of the month immediately preceding the date of publication of the research report.

PL or its research analysts or its associates or his relatives do not have any material conflict of interest at the time of publication of the research report.

PL or its associates might have received compensation from the subject company in the past twelve months.

PL or its associates might have managed or co-managed public offering of securities for the subject company in the past twelve months or mandated by the subject company for any other assignment in the past twelve months.

PL or its associates might have received any compensation for investment banking or merchant banking or brokerage services from the subject company in the past twelve months.

PL or its associates might have received any compensation for products or services other than investment banking or merchant banking or brokerage services from the subject company in the past twelve months PL or its associates might have received any compensation or other benefits from the subject company or third party in connection with the research report.

PL encourages independence in research report preparation and strives to minimize conflict in preparation of research report. PL or its analysts did not receive any compensation or other benefits from the subject Company or third party in connection with the preparation of the research report. PL or its Research Analysts do not have any material conflict of interest at the time of publication of this report.

It is confirmed that Mrs.Vaishali Parekh B.com, Research Analyst of this report has not received any compensation from the companies mentioned in the report in the preceding twelve months compensation of our Research Analysts is not based on any specific merchant banking, investment banking or brokerage service transactions.

The Research analysts for this report certifies that all of the views expressed in this report accurately reflect his or her personal views about the subject company or companies and its or their securities, and no part of his or her compensation was, is or will be, directly or indirectly related to specific recommendations or views expressed in this report.

The research analysts for this report has not served as an officer, director or employee of the subject company PL or its research analysts have not engaged in market making activity for the subject company

Our sales people, traders, and other professionals or affiliates may provide oral or written market commentary or trading strategies to our clients that reflect opinions that are contrary to the opinions expressed herein, and our proprietary trading and investing businesses may make investment decisions that are inconsistent with the recommendations expressed herein. In reviewing these materials, you should be aware that any or all of the foregoing, among other things, may give rise to real or potential conflicts of interest.

PL and its associates, their directors and employees may (a) from time to time, have a long or short position in, and buy or sell the securities of the subject company or (b) be engaged in any other transaction involving such securities and earn brokerage or other compensation or act as a market maker in the financial instruments of the subject company or act as an advisor or lender/borrower to the subject company or may have any other potential conflict of interests with respect to any recommendation and other related information and opinions.