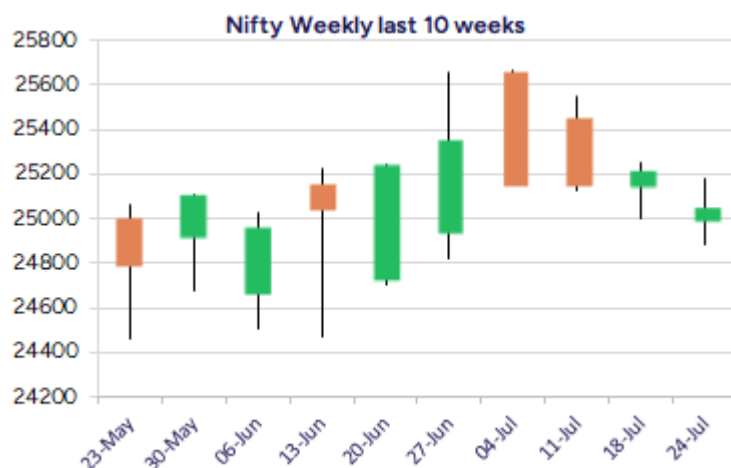
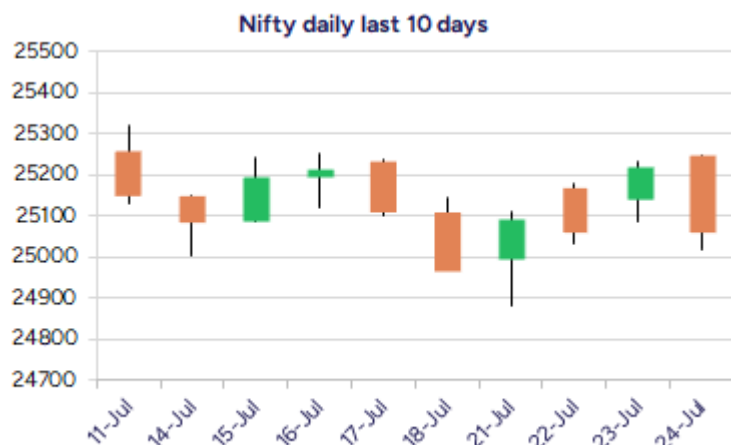


Date: 25th July 2025

* Sensex 82184.17 - 542.47

* Nifty 25062.10 - 156.90

* Bank Nifty 57066.05 - 144.40



*Blue candle → Close rate > Open rate * Red candle → Close rate < Open rate

Market Preview

Nifty witnesses a tough hurdle near 25250 zone

Nifty once again slipped from the resistance zone at 25250 level with profit booking witnessed and closed near the 25050 zone with bias maintained intact. BankNifty continue to be in a tight rangebound zone with 57300 level acting as a tough barrier which needs to be breached decisively to carry on with the upward move. The market breadth remained weak with the advance decline indicating a ratio of 1:2 at close.

Market Forecast

Nifty daily range 24900-25300

Nifty once again found resistance near the hurdle of 25250 zone and witnessed profit booking to slip towards the 25000 zone to indicate a tight rangebound movement between 25000 and 25250 level for quite some time, with overall bias maintained positive. As mentioned earlier, we continue to maintain our stance, would need a decisive breached above the 25250-25300 zone to continue with the positive movement further ahead and expect for next targets of 25500 and 25700 levels in the coming days provided the important and crucial support zone of 24900 level is sustained as of now.

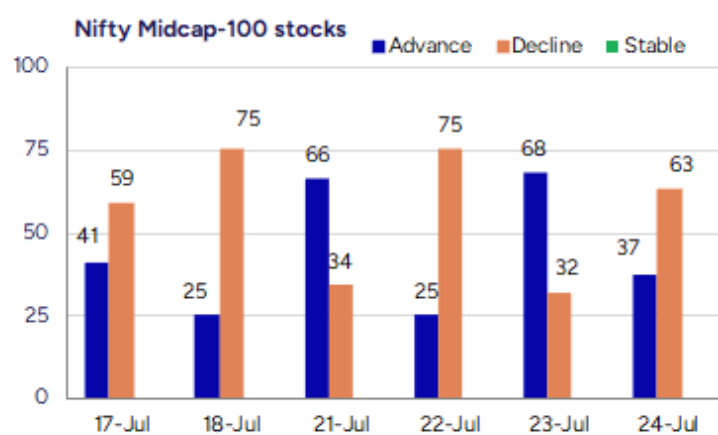
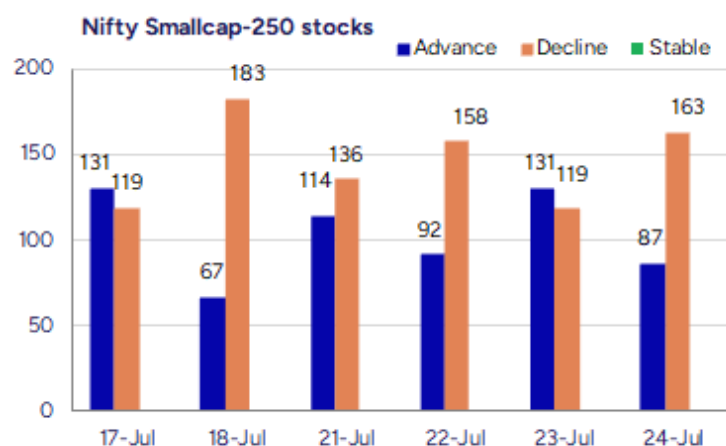
BankNifty, continue to move within a tight range having the tough resistance barrier near the 57300 zone which needs to be breached decisively and thereafter, expect for further upward movement in the coming days. On the downside, the 50EMA zone at 56000 level shall be the important and crucial support which needs to be sustained to maintain the overall bias and sentiment intact.

The support for the day is seen at 24900 levels while the resistance is seen at 25300 levels. BankNifty would have the daily range of 56500-57600 levels.

Indices	Period	Closing	% Chng	Trend	Reversal	2 Sup	1 Sup	Pivot	1 Res	2 Res
Nifty	Daily	25062.10	-0.62%	-1	25088.55	24881	24972	25109	25199	25337
	Weekly	25149.85	-1.22%	-2	25405.20	24861	25005	25276	25421	25692
	Monthly	25517.05	3.10%	2	25312.05	24028	24772	25217	25962	26407
Bank Nifty	Daily	57066.05	-0.25%	2	56974.05	56612	56839	57078	57305	57544
	Weekly	56754.70	-0.49%	-2	57317.20	56174	56464	56902	57192	57630
	Monthly	57312.75	2.80%	3	54910.25	54237	55775	56687	58226	59138
Sensex	Daily	82184.17	-0.66%	-1	82222.90	81602	81893	82339	82630	83076
	Weekly	82500.47	-1.12%	-2	83295.00	81554	82027	82917	83390	84280
	Monthly	83606.46	2.65%	2	81262.65	79027	81317	82703	84992	86378

Gainers - Losers (Nifty 500 Stocks)

Gainers				Losers			
Company Name	Last Price	% Gain	Volume	Company Name	Last Price	% Loss	Volume
Baweja Studios	69.9	20	444800	IEX	132.32	-29.58	127717824
Akiko Global	89.25	19.96	155200	Enfuse Solution	221	-9.94	50400
V R Infraspac	211	19.89	7200	Cigniti Tech	1573	-9.71	660748
Indo Borax	291.66	19.28	4685060	Veranda Learn	221.59	-9.61	1972032
Pondy Oxides	1095.3	15.48	3633315	COFORGE LTD.	1676	-9.39	11477698
Olectra Greente	1532.4	15.45	13749580	Manaksia Alumin	30.65	-8.48	541717
Tejas Cargo Ind	281.1	12.44	28000	Wendt	9707	-7.86	123439



Nifty Daily chart with RSI indicator



BankNifty Daily chart with RSI indicator

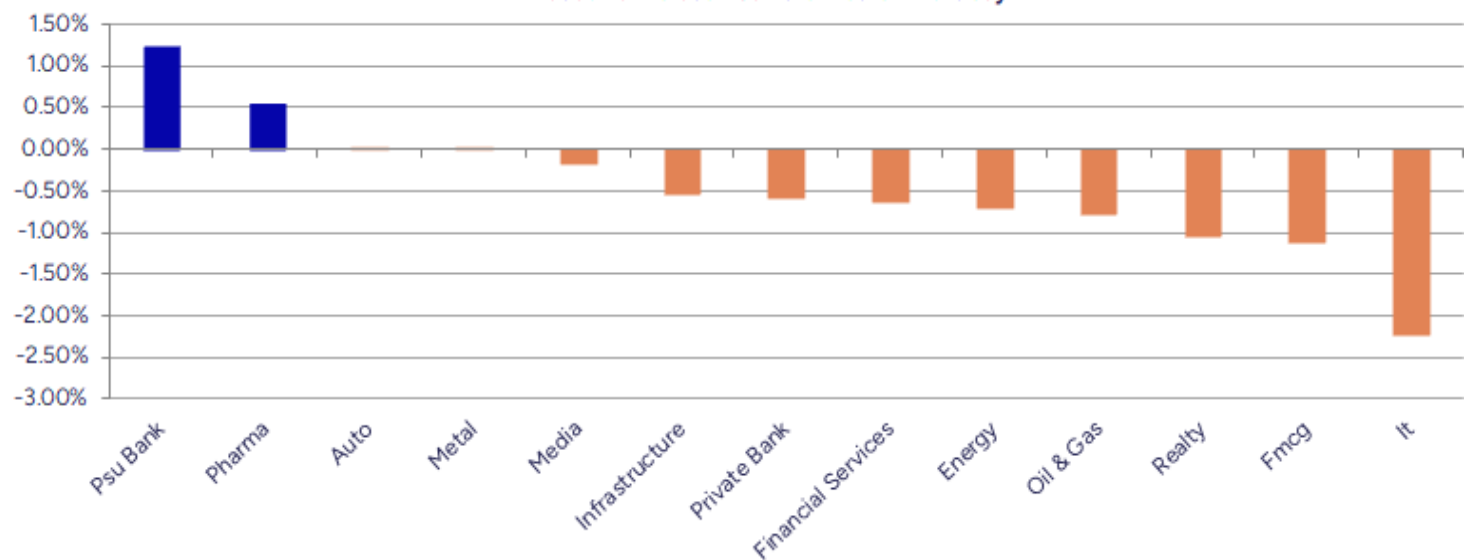


Breakouts - Cross above 200 DMA				Breakdown - Cross below 200 DMA			
Company Name	LCP	Change %	200 DMA	Company Name	LCP	Change %	200 DMA
Olectra Greente	1532.4	14.68	1336.23	IEX	132.32	-27.36	182.15
Akiko Global	89.25	11.49	80.05	Veranda Learnin	221.59	-4.81	232.78
Baweja Studios	69.9	11.41	62.74	D.K. Enterprise	69.5	-4.15	72.51
Vijaya Diagnost	1121.15	9.65	1022.46	Celebrity Fash	13.11	-3.53	13.59
Arrow Greentech	734	4.90	699.71	Tokyo Plast	121.42	-2.97	125.14
Ipca Labs	1540.8	4.21	1478.49	Rachana Infra	38.5	-2.63	39.54
Bansal Wire Ind	409.9	3.72	395.18	Softtech Engine	377.65	-2.41	386.97
IVP	197.31	3.33	190.96	Star Health	430.4	-2.41	441.03
Igarashi Motors	616.35	3.08	597.93	Mphasis	2653.5	-2.33	2716.81
GVP Infotech	10.97	2.62	10.69	Bhagiradh Chem	302.9	-1.60	307.84
Gujarat Pipavav	165.83	2.35	162.03	Bharat Wire Rop	199.62	-1.56	202.79
Supreme Ind	4242.7	2.12	4154.5	Weizmann	119.97	-1.47	121.76
MOTHERSON	103.05	1.91	101.12	Wanbury	249.95	-1.22	253.04
Indian Terrain	43.01	1.82	42.24	Vision Infra	162.15	-1.08	163.92
Jana SFB	461.7	1.43	455.2	Nilkamal	1740.8	-1.05	1759.35
Ajanta Pharma	2796.4	1.42	2757.31	Cheviot Company	1159.9	-0.97	1171.3
La Opala RG	278.95	1.16	275.76	Rajdarshan Ind	48.02	-0.95	48.48
Windlas	974.6	1.12	963.8	Tata Chemicals	946.4	-0.85	954.52

* Stocks crossing above its Simple Moving Average (200DMA)

* Stocks crossing below its Simple Moving Average (200DMA)

Sectoral Indices - Gainers Losers for the day



Stocks witnessing a volume surge as compared to their 5 day average volume

Watch out for the stocks that have seen a huge spurt in its share price over the last three days

Volume Shockers - NSE					
Company name	LCP	% Chg	Volume	Avg Vol *	% Chg
Tokyo Plast	121.42	-3	263499	8604	2963
Pearl Polymers	32.56	9.23	642854	22996	2696
Indo Borax	291.66	19.28	4685060	174315	2588
Thyrocare Techn	1337.05	10.91	1940908	83844	2215
Krishival Foods	404.3	2.43	26988	1200	2149
SPIC	96.11	8.77	14528763	655463	2117
Krishna Institu	789.35	3.34	1291315	59456	2072
Vijaya Diagnost	1121.15	10.16	4758576	222272	2041
Mukand	144.04	6.11	2752999	133849	1957
Indoco Remedies	321.8	3.42	1252364	61780	1927
IEX	132.32	-29.58	127717824	6668874	1815
KCK Industries	41.45	1.1	255000	13600	1775
BEW Engineering	170	2.81	20500	1125	1722
Oneclick Logi.	212.6	0.47	74400	4320	1622
Blue Jet Health	812.05	-0.57	3390634	212985	1492
Aaron Industrie	430.65	5.75	672515	42601	1479
Olectra Greente	1532.4	15.45	13749580	885577	1453
V-Mart Retail	807.35	5.71	1344666	92139	1359
Grill Splendour	134	-2.9	54000	3840	1306
Pondy Oxides	1095.3	15.48	3633315	261511	1289

* the Average Volume of last 5 days

Price Shockers - NSE				
Company name	LCP	Prv Close	% Chg	Volume
InfoBeans Tech	592.05	438.25	35.09	1507068
V R Infraspac	211	166	27.11	7200
Voler Car	170.8	134.45	27.04	310400
Banka Bioloo	96.62	76.06	27.03	7961
Indo Borax	291.66	238.86	22.1	4685060
Jayaswal Neco	45.77	37.62	21.66	347159663
Olectra Greente	1532.4	1266.3	21.01	13749580
Master Trust	164.5	138.16	19.06	2750274
SML Isuzu	3983.9	3350.1	18.92	610751
KIOCL	361.7	306.5	18.01	6723532
Tilaknagar Ind	493.35	418.8	17.8	14988903
Manaksia Coated	166.88	143.38	16.39	2626405
Primo Chemicals	30.44	26.2	16.18	1232511
Lords Chloro	221.22	190.48	16.14	342269
Arihant Capital	101.44	87.49	15.94	1204987
Blue Coast	37.7	32.58	15.72	324
United Polyfab	23.95	20.74	15.48	1220145
Pondy Oxides	1095.3	948.55	15.47	3633315
PNB Gilts	115.42	100.19	15.2	21002146
Worth Periphera	168.28	146.19	15.11	585071

* the % price rise of the last 3 days

Nifty 50 stocks - Summary Details											
Symbol	LTP	Chng	% Chng	Volume (lacs)	Turnover (crs.)	52w High	Diff with 52w H	52w Low	Diff with 52w L	365 days % chng	30 days % chng
NIFTY 50	25062.10	-157.80	-0.63%	3387.28	27433.09	26277.35	4.62%	21743.65	15.26%	0.99%	3.03%
ADANIENT	2608.00	-6.50	-0.25%	2.54	66.18	3258.00	19.95%	2025.00	28.79%	5.76%	-12.71%
ADANIPTS	1412.90	-7.90	-0.56%	5.98	84.42	1604.95	11.97%	995.65	41.91%	4.87%	-5.74%
APOLLOHOSP	7366.00	-7.50	-0.10%	4.55	337.44	7635.00	3.52%	6001.00	22.75%	5.22%	15.15%
ASIANPAINT	2352.00	-23.40	-0.99%	5.07	119.45	3394.90	30.72%	2124.75	10.70%	4.92%	-18.01%
AXISBANK	1095.60	-9.20	-0.83%	99.01	1084.72	1291.10	15.14%	933.50	17.36%	-9.00%	-12.54%
BAJAJ-AUTO	8288.00	-109.00	-1.30%	2.99	249.03	12774.00	35.12%	7089.35	16.91%	1.33%	-10.50%
BAJAJFINSV	2030.00	-30.50	-1.48%	6.59	134.63	2135.00	4.92%	1523.25	33.27%	3.15%	27.28%
BAJFINANCE	956.50	-11.80	-1.22%	51.89	498.07	978.80	2.28%	642.50	48.87%	5.77%	-85.61%
BEL	398.25	-1.95	-0.49%	67.68	269.32	436.00	8.66%	240.25	65.76%	-4.92%	32.76%
BHARTIARTL	1937.20	-6.60	-0.34%	41.51	809.25	2045.80	5.31%	1422.60	36.17%	0.39%	32.62%
CIPLA	1486.30	12.80	0.87%	13.89	205.83	1702.05	12.68%	1335.00	11.33%	-1.71%	-1.63%
COALINDIA	385.60	-5.15	-1.32%	40.22	155.28	543.55	29.06%	349.25	10.41%	-0.45%	-19.76%
DRREDDY	1268.90	21.50	1.72%	38.09	485.74	1421.49	10.73%	1020.00	24.40%	-5.35%	-81.83%
EICHERMOT	5472.50	31.00	0.57%	2.84	155.57	5906.50	7.35%	4508.75	21.38%	-2.00%	10.61%
GRASIM	2729.20	20.10	0.74%	9.98	270.85	2896.00	5.76%	2276.95	19.86%	-0.54%	-4.04%
HCLTECH	1510.10	-19.70	-1.29%	46.54	705.19	2012.20	24.95%	1302.75	15.92%	-10.18%	-4.29%
HDFCBANK	2011.70	-12.60	-0.62%	95.54	1928.98	2037.70	1.28%	1588.05	26.68%	3.90%	25.08%
HDFCLIFE	758.15	-4.35	-0.57%	12.59	95.79	820.75	7.63%	584.30	29.75%	-1.50%	18.41%
HEROMOTOCO	4301.00	2.30	0.05%	5.84	250.77	6246.25	31.14%	3344.00	28.62%	2.60%	-20.85%
HINDALCO	698.40	3.00	0.43%	45.93	320.17	772.65	9.61%	546.45	27.81%	5.14%	6.41%
HINDUNILVR	2435.00	-15.40	-0.63%	6.94	169.21	3035.00	19.77%	2136.00	14.00%	7.71%	-11.42%
ICICIBANK	1480.90	-7.70	-0.52%	67.01	994.66	1490.00	0.61%	1153.00	28.44%	4.82%	21.35%
INDUSINDBK	847.90	-3.25	-0.38%	20.07	171.07	1498.00	43.40%	606.00	39.92%	1.34%	-39.77%
INFY	1553.00	-21.50	-1.37%	141.70	2207.35	2006.45	22.60%	1307.00	18.82%	-0.60%	-14.28%
ITC	410.00	-4.95	-1.19%	90.05	370.48	528.50	22.42%	390.15	5.09%	0.25%	-15.69%
JIOFIN	316.50	2.05	0.65%	113.48	359.98	363.00	12.81%	198.65	59.33%	7.27%	-6.11%
JSWSTEEL	1035.90	2.10	0.20%	14.62	151.84	1074.90	3.63%	854.15	21.28%	3.69%	15.64%
KOTAKBANK	2143.00	-27.40	-1.26%	20.58	442.10	2301.90	6.90%	1679.05	27.63%	-0.63%	22.70%
LT	3477.90	-7.00	-0.20%	10.84	376.27	3963.50	12.25%	2965.30	17.29%	-2.76%	-1.50%
M&M	3245.00	-23.80	-0.73%	14.69	479.71	3303.00	1.76%	2425.00	33.81%	4.27%	15.86%
MARUTI	12565.00	-62.00	-0.49%	1.57	197.72	13680.00	8.15%	10725.00	17.16%	-0.57%	-0.02%
NESTLEIND	2316.00	-136.50	-5.57%	26.86	630.94	2778.00	16.63%	2110.00	9.76%	3.96%	-5.00%
NTPC	338.90	-4.15	-1.21%	90.98	308.95	448.45	24.43%	292.80	15.74%	3.14%	-10.30%
ONGC	245.25	-0.30	-0.12%	45.91	112.38	345.00	28.91%	205.00	19.63%	-2.32%	-21.84%
POWERGRID	298.55	-0.70	-0.23%	62.95	188.09	366.25	18.48%	247.30	20.72%	3.10%	-10.47%
RELIANCE	1402.80	-21.80	-1.53%	147.40	2074.08	1551.00	9.56%	1114.85	25.83%	-2.21%	-52.13%
SBILIFE	1817.00	7.50	0.41%	9.28	166.26	1936.00	6.15%	1372.55	32.38%	-0.50%	13.46%
SBIN	816.50	-4.15	-0.51%	101.18	825.17	889.10	8.17%	680.00	20.07%	3.85%	-5.01%
SHRIRAMFIN	633.30	-20.75	-3.17%	72.48	463.49	730.45	13.30%	493.35	28.37%	-1.15%	-76.12%
SUNPHARMA	1692.00	9.50	0.56%	10.79	182.37	1960.35	13.69%	1553.05	8.95%	1.20%	5.05%
TATACONSUM	1073.00	10.40	0.98%	62.65	676.08	1250.10	14.17%	882.90	21.53%	-4.22%	-15.46%
TATAMOTORS	701.30	11.20	1.62%	151.98	1067.06	1179.00	40.52%	535.75	30.90%	2.81%	-31.11%
TATASTEEL	163.60	0.83	0.51%	143.77	235.34	170.18	3.87%	122.62	33.42%	6.78%	1.72%
TCS	3144.90	-34.20	-1.08%	29.35	926.03	4592.25	31.52%	3056.05	2.91%	-6.32%	-26.11%
TECHM	1496.20	-50.40	-3.26%	22.07	333.24	1807.70	17.23%	1209.40	23.71%	-8.04%	3.56%
TITAN	3476.30	4.90	0.14%	6.31	219.52	3867.00	10.10%	2925.00	18.85%	-0.98%	0.13%
TRENT	5148.00	-211.00	-3.94%	13.26	690.15	8345.00	38.31%	4488.00	14.71%	-12.43%	1.81%
ULTRACEMCO	12250.00	-122.00	-0.99%	1.80	221.66	12714.00	3.65%	10047.85	21.92%	8.06%	7.16%
WIPRO	262.20	0.80	0.31%	81.40	213.00	324.60	19.22%	228.00	15.00%	-0.70%	-47.78%
ETERNAL	312.45	10.40	3.44%	1206.04	3752.22	314.45	0.64%	194.80	60.40%	18.62%	#VALUE!

Disclaimer / Disclosures

ANALYST CERTIFICATION

I, Mrs. Vaishali Parekh B.com, Research Analyst, author and the name subscribed to this report, hereby certify that all of the views expressed in this research report accurately reflect our views about the subject issuer(s) or securities. We also certify that no part of our compensation was, is, or will be directly or indirectly related to the specific recommendation(s) or view(s) in this report.

Terms & conditions and other disclosures:

Prabhudas Lilladher Pvt. Ltd, Mumbai, India (hereinafter referred to as "PL") is engaged in the business of Stock Broking, Portfolio Manager, Depository Participant and distribution for third party financial products. PL is a subsidiary of Prabhudas Lilladher Advisory Services Pvt Ltd. which has its various subsidiaries engaged in business of commodity broking, investment banking, financial services (margin funding) and distribution of third party financial/other products, details in respect of which are available at www.plindia.com

This document has been prepared by the Research Division of PL and is meant for use by the recipient only as information and is not for circulation. This document is not to be reported or copied or made available to others without prior permission of PL. It should not be considered or taken as an offer to sell or a solicitation to buy or sell any security.

The information contained in this report has been obtained from sources that are considered to be reliable. However, PL has not independently verified the accuracy or completeness of the same. Neither PL nor any of its affiliates, its directors or its employees accepts any responsibility of whatsoever nature for the information, statements and opinion given, made available or expressed herein or for any omission therein.

Recipients of this report should be aware that past performance is not necessarily a guide to future performance and value of investments can go down as well. The suitability or otherwise of any investments will depend upon the recipient's particular circumstances and, in case of doubt, advice should be sought from an independent expert/advisor.

Either PL or its affiliates or its directors or its employees or its representatives or its clients or their relatives may have position(s), make market, act as principal or engage in transactions of securities of companies referred to in this report and they may have used the research material prior to publication.

PL may from time to time solicit or perform investment banking or other services for any company mentioned in this document.

PL is registered as Research Analyst under Securities and Exchange Board of India (Research Analysts) Regulations, 2014 PL submits that no material disciplinary action has been taken on us by any Regulatory Authority impacting Equity Research Analysis activities.

PL or its research analysts or its associates or his relatives do not have any financial interest in the subject company.

PL or its research analysts or its associates or his relatives do not have actual/beneficial ownership of one per cent or more securities of the subject company at the end of the month immediately preceding the date of publication of the research report.

PL or its research analysts or its associates or his relatives do not have any material conflict of interest at the time of publication of the research report.

PL or its associates might have received compensation from the subject company in the past twelve months.

PL or its associates might have managed or co-managed public offering of securities for the subject company in the past twelve months or mandated by the subject company for any other assignment in the past twelve months.

PL or its associates might have received any compensation for investment banking or merchant banking or brokerage services from the subject company in the past twelve months.

PL or its associates might have received any compensation for products or services other than investment banking or merchant banking or brokerage services from the subject company in the past twelve months PL or its associates might have received any compensation or other benefits from the subject company or third party in connection with the research report.

PL encourages independence in research report preparation and strives to minimize conflict in preparation of research report. PL or its analysts did not receive any compensation or other benefits from the subject Company or third party in connection with the preparation of the research report. PL or its Research Analysts do not have any material conflict of interest at the time of publication of this report.

It is confirmed that Mrs.Vaishali Parekh B.com, Research Analyst of this report has not received any compensation from the companies mentioned in the report in the preceding twelve months compensation of our Research Analysts is not based on any specific merchant banking, investment banking or brokerage service transactions.

The Research analysts for this report certifies that all of the views expressed in this report accurately reflect his or her personal views about the subject company or companies and its or their securities, and no part of his or her compensation was, is or will be, directly or indirectly related to specific recommendations or views expressed in this report.

The research analysts for this report has not served as an officer, director or employee of the subject company PL or its research analysts have not engaged in market making activity for the subject company

Our sales people, traders, and other professionals or affiliates may provide oral or written market commentary or trading strategies to our clients that reflect opinions that are contrary to the opinions expressed herein, and our proprietary trading and investing businesses may make investment decisions that are inconsistent with the recommendations expressed herein. In reviewing these materials, you should be aware that any or all of the foregoing, among other things, may give rise to real or potential conflicts of interest.

PL and its associates, their directors and employees may (a) from time to time, have a long or short position in, and buy or sell the securities of the subject company or (b) be engaged in any other transaction involving such securities and earn brokerage or other compensation or act as a market maker in the financial instruments of the subject company or act as an advisor or lender/borrower to the subject company or may have any other potential conflict of interests with respect to any recommendation and other related information and opinions.