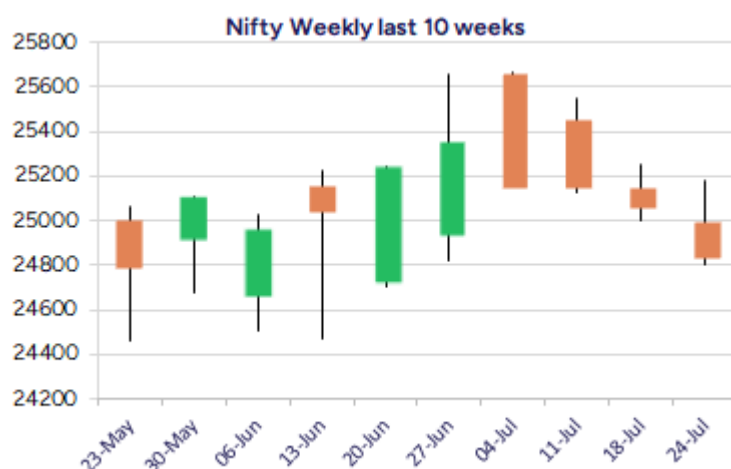
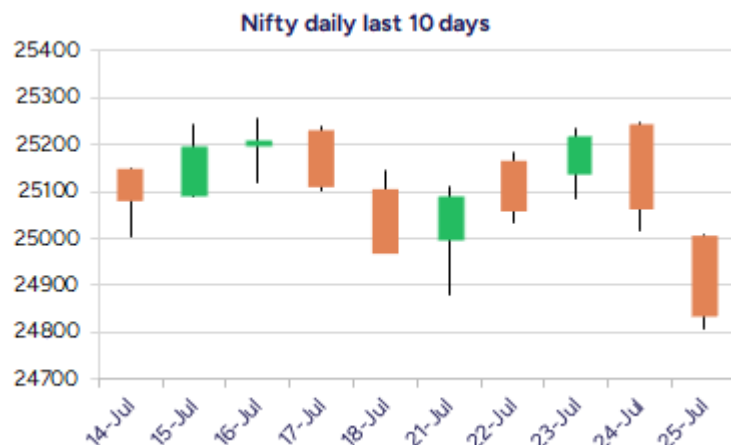


Date: 28th July 2025

* Sensex 81463.09 - 721.08

* Nifty 24837.00 - 225.10

* Bank Nifty 56528.90 - 537.15



*Blue candle → Close rate > Open rate * Red candle → Close rate < Open rate

Market Preview

Nifty lose steam; at crucial juncture of 24800 zone

Nifty slipped below the important support of the 50EMA zone at 24900 level with bias weakening and further would need to hold on to the base of the channel pattern to maintain the trend intact. BankNifty slipped down with heavy profit booking witnessed and bias turning out into a cautious mode having the crucial support near the 56000 zone. The market breadth was weak with the advance decline indicating a ratio of 1:4 at close.

Market Forecast

Nifty daily range 24700-25000

Nifty witnessed heavy profit booking in the last two sessions from the crucial hurdle of 25050 zone and has slipped below the important 50EMA zone at 24950 level to weaken the bias having next near-term support visible near 24670-24750 zone and the crucial important support positioned near the 24500 level. The index has arrived at the base of the ascending channel pattern on the daily chart at 24800 zone and a revival from current rate will improve the bias once again if it decisively breaches above the 25000 zone in the coming sessions.

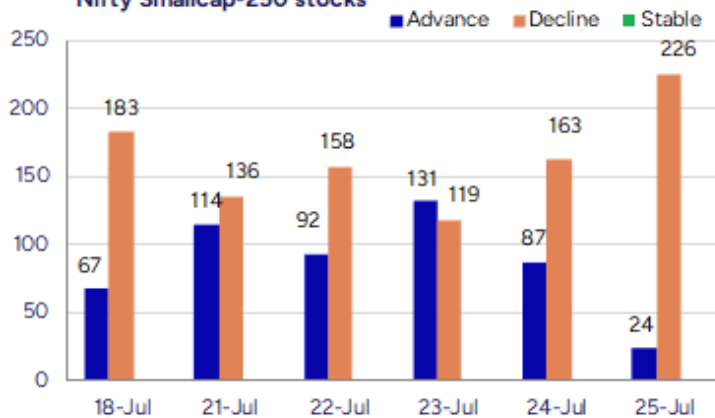
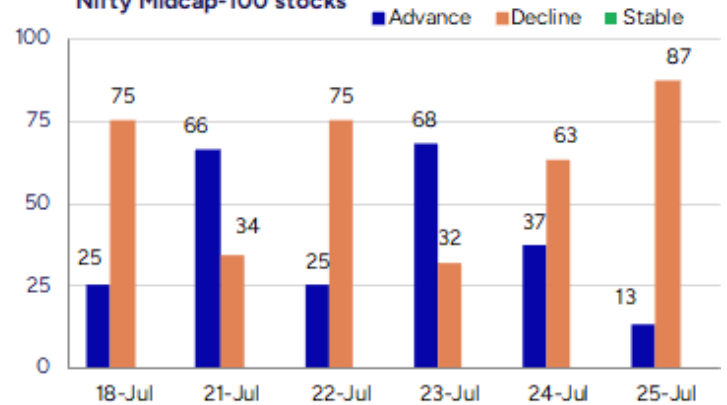
BankNifty, continued with the slide with a weak candle indication on the daily chart and once again is on the way to retest the important 50EMA zone near the 56000 level which is the crucial support as of now. The index needs to sustain the 50EMA zone to maintain the bias intact else can trigger for fresh downward slide in the coming sessions. At the same time, on the upside, the tough resistance barrier near the 57300 zone needs to be breached decisively to expect for fresh upward movement and strengthen the trend.

The support for the day is seen at 24700 levels while the resistance is seen at 25000 levels. BankNifty would have the daily range of 56000-57000 levels.

Indices	Period	Closing	% Chng	Trend	Reversal	2 Sup	1 Sup	Pivot	1 Res	2 Res
Nifty	Daily	24837.00	-0.90%	-2	25004.85	24681	24759	24885	24963	25089
	Weekly	24837.00	-1.24%	-3	25322.55	24529	24683	24963	25117	25397
	Monthly	25517.05	3.10%	2	25312.05	24028	24772	25217	25962	26407
Bank Nifty	Daily	56528.90	-0.94%	-1	56865.70	55982	56255	56713	56987	57444
	Weekly	56528.90	-0.40%	-3	57019.65	55644	56086	56702	57144	57759
	Monthly	57312.75	2.80%	3	54910.25	54237	55775	56687	58226	59138
Sensex	Daily	81463.09	-0.88%	-2	81958.35	80972	81217	81643	81889	82315
	Weekly	81463.09	-1.26%	-3	82942.70	80495	80979	81882	82366	83269
	Monthly	83606.46	2.65%	2	81262.65	79027	81317	82703	84992	86378

Gainers - Losers (Nifty 500 Stocks)

Gainers				Losers			
Company Name	Last Price	% Gain	Volume	Company Name	Last Price	% Loss	Volume
Sharda Crop	1087.1	19.63	8818635	Sunrest	53.15	-10.67	6400
Kellton Tech	32.15	16.36	38946325	Hexaware Tech	739.35	-10.56	2634533
Vimta Labs	584.95	15.61	16634877	Chennai Petro	687.6	-9.72	5840885
Times Guaranty	220.88	14.27	272855	Intellect Desig	1036.4	-9.25	1619251
Tatva Chintan	1145.75	12.83	3328168	JTEKT India	133.26	-8.84	601405
BB Triplewall	199.21	11.99	166775	APL Apollo	1543.1	-8.5	2369612
Agro Phos India	40.95	10.44	1599843	Shalimar Paints	84.52	-8.42	670180

Nifty Smallcap-250 stocks

Nifty Midcap-100 stocks


Nifty Daily chart with RSI indicator



BankNifty Daily chart with RSI indicator



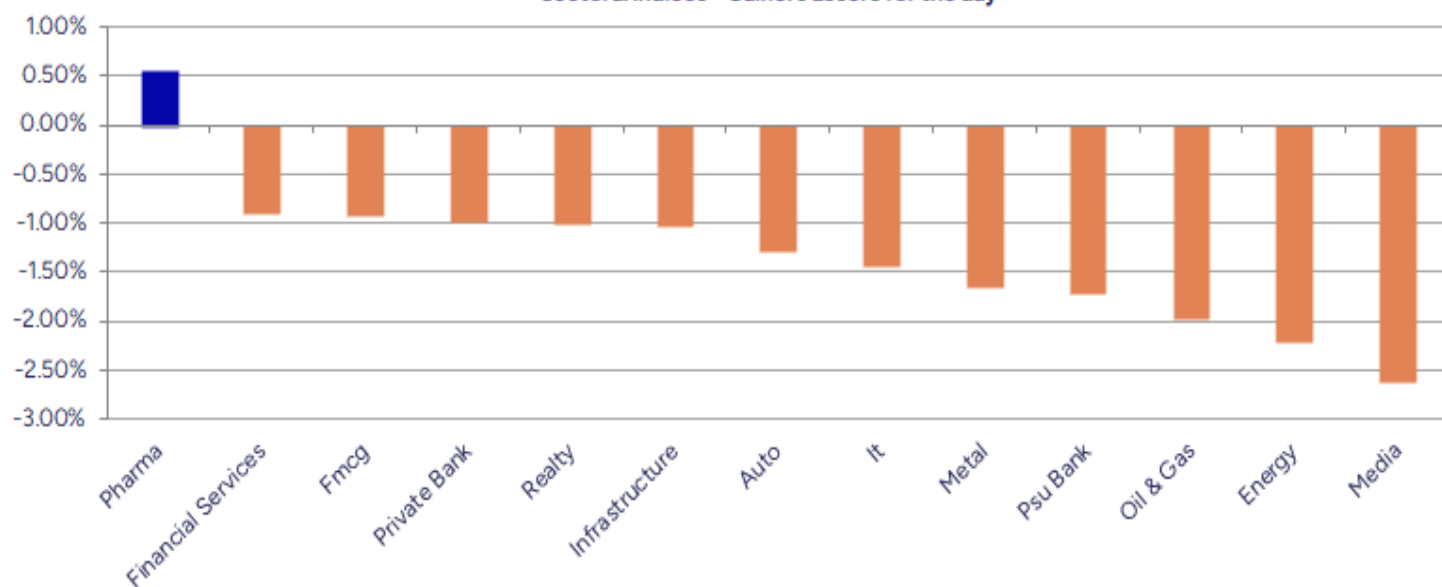
Breakouts - Cross above 200 DMA			
Company Name	LCP	Change %	200 DMA
B&B Triplewall	199.21	9.65	181.67
Mirza Intl	35.64	3.94	34.29
Ajmera Realty	936.9	2.94	910.14
Cipla	1532.5	2.78	1491.08
Nilkamal	1796.8	2.17	1758.71
Medicamen Organ	43.7	1.98	42.85
Lakshmi Finance	217.3	1.13	214.87
Cheviot Company	1182.1	1.01	1170.3
Sylvan Plyboard	83.95	0.80	83.28
Onelife Capital	14.03	0.65	13.94
Tainwala Chem	245.94	0.54	244.62
Innova Captab	905.25	0.17	903.69
MPS	2404.7	0.17	2400.69

* Stocks crossing above its Simple Moving Average (200DMA)

Breakdown - Cross below 200 DMA			
Company Name	LCP	Change %	200 DMA
MYMUDRA	73.7	-6.54	78.86
Avantel	135.96	-4.96	143.06
Auto Stampings	551.15	-4.80	578.94
Innomet Advance	163.95	-4.53	171.73
Satin Credit	149.99	-4.13	156.45
Latent View	412.65	-3.88	429.31
TGB Banquets	12.25	-3.24	12.66
NRB Industrial	25.09	-3.16	25.91
CAMS	4034.3	-3.14	4165
Indian Terrain	40.93	-2.96	42.18
GVP Infotech	10.37	-2.90	10.68
APL Apollo	1543.1	-2.86	1588.59
Adani Trans	817.15	-2.71	839.88
Network 18	57.7	-2.68	59.29
Somany Ceramics	536.6	-2.56	550.69
Himatsingka Sei	155.13	-2.53	159.15
Tolins Tyres	156.57	-2.52	160.62
HMT	60.1	-2.51	61.65

* Stocks crossing below its Simple Moving Average (200DMA)

Sectoral Indices - Gainers Losers for the day



Stocks witnessing a volume surge as compared to their 5 day average volume

Watch out for the stocks that have seen a huge spurt in its share price over the last three days

Volume Shockers - NSE					
Company name	LCP	% Chg	Volume	Avg Vol *	% Chg
Mirza Intl	35.64	8.2	4141847	89274	4539
B&B Triplewall	199.21	11.99	166775	3658	4459
Kellton Tech	32.15	16.36	38946325	1004877	3776
Agro Phos India	40.95	10.44	1599843	43663	3564
KCK Industries	40.9	-1.33	457500	13600	3264
Omax Autos	121.13	9.93	3233796	113202	2757
Dodla	1300.9	-2.62	589790	27046	2081
Sharda Crop	1087.1	19.63	8818635	421554	1992
Menon Bearings	130.12	6.46	703151	35984	1854
Trident	31.49	-0.13	143904635	8180380	1659
Metro	1217.6	0.99	1296398	81538	1490
Ajmera Realty	936.9	4.31	1203520	76872	1466
Filatex India	59.39	2.84	24911312	1634506	1424
Grill Splendour	128	-4.48	56400	3840	1369
eClerx Services	3646.8	-0.33	619637	42374	1362
Authum Invest	2740.8	-2.4	3537395	266805	1226
Tega Industries	1866.2	-3.68	321046	24591	1206
SOLARA ACTIVE P	697	6.06	1023017	81733	1152
Oneclick Logi.	213.95	0.63	52800	4320	1122
Nilkamal	1796.8	3.22	27410	2267	1109

* the Average Volume of last 5 days

Price Shockers - NSE				
Company name	LCP	Prv Close	% Chg	Volume
InfoBeans Tech	564.2	448.55	25.78	390010
V R Infraspac	220	176	25	3200
Sharda Crop	1087.1	878.2	23.79	8820971
Indo Borax	290.45	238.25	21.91	1978309
Baweja Studios	72.6	60.5	20	220800
Jayaswal Neco	42.06	35.82	17.42	154296452
Olectra Greente	1480.9	1271.5	16.47	4186129
Times Guaranty	220.88	190.62	15.87	273441
Master Trust	167.78	144.86	15.82	2825148
Blue Coast	39.58	34.2	15.73	2651
AKI India	12.56	10.86	15.65	34593
United Polyfab	25.11	21.76	15.4	1081393
SPIC	98.63	85.55	15.29	6332964
Voler Car	170.1	147.85	15.05	208000
Aaron Industrie	456.9	397.25	15.02	355202
Orbit Exports	247.57	215.72	14.76	149246
Pondy Oxides	1097.95	959.6	14.42	1684520
Agro Phos India	40.95	35.79	14.42	1599844
Moving Media	82	71.85	14.13	122000
Datamatics Glob	879.55	774.35	13.59	2030984

* the % price rise of the last 3 days

Nifty 50 stocks - Summary Details

Symbol	LTP	Chng	% Chng	Volume (lacs)	Turnover (crs.)	52w High	Diff with 52w H	52w Low	Diff with 52w L	365 days % chng	30 days % chng
NIFTY 50	24837.00	-225.10	-0.90%	2781.34	25273.17	26277.35	5.48%	21743.65	14.23%	0.07%	2.66%
ADANIEN	2549.50	-58.90	-2.26%	4.25	109.06	3258.00	21.75%	2025.00	25.90%	4.10%	-12.20%
ADANIPTS	1390.00	-21.60	-1.53%	7.44	104.31	1604.95	13.39%	995.65	39.61%	1.59%	-4.93%
APOLLOHOSP	7474.00	110.50	1.50%	4.34	323.12	7635.00	2.11%	6001.00	24.55%	5.10%	14.65%
ASIANPAINT	2338.90	-13.20	-0.56%	3.84	89.65	3394.90	31.11%	2124.75	10.08%	3.38%	-19.25%
AXISBANK	1086.00	-9.10	-0.83%	117.80	1278.26	1281.65	15.27%	933.50	16.34%	-10.33%	-11.63%
BAJAJ-AUTO	8074.50	-214.00	-2.58%	5.54	448.73	12774.00	36.79%	7089.35	13.90%	-1.06%	-10.49%
BAJAJFINSV	1985.40	-46.90	-2.31%	41.02	804.80	2135.00	7.01%	1523.25	30.34%	1.15%	28.69%
BAJFINANCE	912.85	-46.10	-4.81%	244.15	2226.47	978.80	6.74%	642.50	42.08%	4.63%	-85.49%
BEL	395.60	-2.65	-0.67%	92.02	364.33	436.00	9.27%	240.25	64.66%	-4.84%	32.71%
BHARTIARTL	1928.00	-8.10	-0.42%	38.97	755.37	2045.80	5.76%	1422.60	35.53%	0.13%	33.05%
CIPLA	1535.00	47.10	3.17%	52.26	799.11	1702.05	9.81%	1335.00	14.98%	-0.97%	-1.04%
COALINDIA	381.65	-3.90	-1.01%	46.17	176.14	543.55	29.79%	349.25	9.28%	-1.81%	-21.92%
DRREDDY	1277.00	11.50	0.91%	16.21	207.49	1421.49	10.16%	1020.00	25.20%	-5.37%	-81.44%
EICHERMOT	5425.00	-44.00	-0.80%	2.93	158.61	5906.50	8.15%	4508.75	20.32%	-2.84%	11.26%
GRASIM	2701.00	-34.90	-1.28%	3.61	97.79	2896.00	6.73%	2276.95	18.62%	-1.62%	-2.53%
HCLTECH	1490.00	-17.20	-1.14%	27.34	410.01	2012.20	25.95%	1302.75	14.37%	-10.91%	-4.83%
HDFCBANK	2005.00	-4.20	-0.21%	46.53	933.28	2037.70	1.60%	1588.05	26.26%	2.72%	25.57%
HDFCLIFE	760.10	2.80	0.37%	17.08	129.82	820.75	7.39%	584.30	30.09%	-2.87%	12.56%
HEROMOTOCO	4221.40	-80.50	-1.87%	6.31	266.61	6246.25	32.42%	3344.00	26.24%	0.22%	-20.60%
HINDALCO	694.10	-1.50	-0.22%	52.21	361.79	772.65	10.17%	546.45	27.02%	3.91%	6.75%
HINDUNILVR	2417.00	-20.80	-0.85%	7.69	185.75	3035.00	20.36%	2136.00	13.16%	7.72%	-10.28%
ICICIBANK	1477.90	-5.50	-0.37%	86.96	1288.30	1500.00	1.47%	1153.00	28.18%	4.16%	21.29%
INDUSINDBK	825.50	-22.40	-2.64%	28.05	232.72	1498.00	44.89%	606.00	36.22%	1.92%	-39.29%
INFY	1518.50	-34.00	-2.19%	108.51	1653.36	2006.45	24.32%	1307.00	16.18%	-1.84%	-15.35%
ITC	409.60	-0.35	-0.09%	58.24	238.30	528.50	22.50%	390.15	4.99%	-1.06%	-17.02%
JIOFIN	311.10	-5.35	-1.69%	109.57	341.75	363.00	14.30%	198.65	56.61%	5.20%	-5.45%
JSWSTEEL	1026.90	-6.90	-0.67%	9.12	93.61	1074.90	4.47%	854.15	20.22%	2.66%	17.30%
KOTAKBANK	2121.20	-20.90	-0.98%	17.45	371.31	2301.90	7.85%	1679.05	26.33%	-3.67%	22.67%
LT	3442.00	-35.50	-1.02%	13.39	462.45	3963.50	13.16%	2965.30	16.08%	-3.53%	-1.19%
M&M	3245.00	-15.90	-0.49%	14.76	477.86	3303.00	1.76%	2425.00	33.81%	3.52%	16.23%
MARUTI	12385.00	-172.00	-1.37%	2.61	323.74	13680.00	9.47%	10725.00	15.48%	-0.43%	0.56%
NESTLEIND	2277.00	-45.10	-1.94%	15.89	363.41	2778.00	18.03%	2110.00	7.91%	-1.85%	-8.63%
NTPC	333.65	-5.25	-1.55%	77.91	260.99	448.45	25.60%	292.80	13.95%	2.71%	-13.68%
ONGC	240.49	-4.34	-1.77%	74.28	179.37	345.00	30.29%	205.00	17.31%	0.37%	-23.38%
POWERGRID	291.85	-7.50	-2.51%	82.03	240.72	366.25	20.31%	247.30	18.01%	4.69%	-11.21%
RELIANCE	1392.40	-10.50	-0.75%	118.54	1652.75	1551.00	10.23%	1114.85	24.90%	-3.30%	-53.10%
SBILIFE	1830.70	37.10	2.07%	18.21	334.16	1936.00	5.44%	1372.55	33.38%	-2.68%	9.84%
SBIN	805.90	-9.80	-1.20%	67.34	545.97	889.10	9.36%	680.00	18.51%	2.55%	-4.26%
SHRIRAMFIN	610.50	-23.05	-3.64%	169.23	1037.93	730.45	16.42%	493.35	23.75%	-6.29%	-76.74%
SUNPHARMA	1702.00	10.00	0.59%	10.89	184.72	1960.35	13.18%	1553.05	9.59%	1.82%	4.48%
TATACONSUM	1053.00	-19.80	-1.85%	11.80	125.12	1245.25	15.44%	882.90	19.27%	-3.15%	-12.87%
TATAMOTORS	687.55	-12.95	-1.85%	72.72	502.29	1179.00	41.68%	535.75	28.33%	3.99%	-31.84%
TATASTEEL	161.51	-1.97	-1.21%	124.43	201.31	170.18	5.09%	122.62	31.72%	5.61%	1.98%
TCS	3140.00	-8.00	-0.25%	25.68	806.67	4592.25	31.62%	3056.05	2.75%	-7.15%	-26.90%
TECHM	1460.70	-37.90	-2.53%	11.80	174.26	1807.70	19.20%	1209.40	20.78%	-10.64%	-2.26%
TITAN	3451.20	-33.20	-0.95%	6.24	216.50	3867.00	10.75%	2925.00	17.99%	-1.18%	0.17%
TRENT	5050.00	-104.00	-2.02%	11.37	577.84	8345.00	39.48%	4488.00	12.52%	-14.92%	-2.51%
ULTRACEMCO	12240.00	13.00	0.11%	2.90	356.14	12714.00	3.73%	10047.85	21.82%	6.26%	7.43%
WIPRO	259.70	-2.15	-0.82%	84.28	217.79	324.60	19.99%	228.00	13.90%	-1.18%	-47.64%
ETERNAL	310.50	-2.65	-0.85%	509.41	1581.32	314.45	1.26%	194.80	59.39%	22.77%	#VALUE!

Disclaimer / Disclosures

ANALYST CERTIFICATION

I, Mrs. Vaishali Parekh B.com, Research Analyst, author and the name subscribed to this report, hereby certify that all of the views expressed in this research report accurately reflect our views about the subject issuer(s) or securities. We also certify that no part of our compensation was, is, or will be directly or indirectly related to the specific recommendation(s) or view(s) in this report.

Terms & conditions and other disclosures:

Prabhudas Lilladher Pvt. Ltd, Mumbai, India (hereinafter referred to as "PL") is engaged in the business of Stock Broking, Portfolio Manager, Depository Participant and distribution for third party financial products. PL is a subsidiary of Prabhudas Lilladher Advisory Services Pvt Ltd. which has its various subsidiaries engaged in business of commodity broking, investment banking, financial services (margin funding) and distribution of third party financial/other products, details in respect of which are available at www.plindia.com

This document has been prepared by the Research Division of PL and is meant for use by the recipient only as information and is not for circulation. This document is not to be reported or copied or made available to others without prior permission of PL. It should not be considered or taken as an offer to sell or a solicitation to buy or sell any security.

The information contained in this report has been obtained from sources that are considered to be reliable. However, PL has not independently verified the accuracy or completeness of the same. Neither PL nor any of its affiliates, its directors or its employees accepts any responsibility of whatsoever nature for the information, statements and opinion given, made available or expressed herein or for any omission therein.

Recipients of this report should be aware that past performance is not necessarily a guide to future performance and value of investments can go down as well. The suitability or otherwise of any investments will depend upon the recipient's particular circumstances and, in case of doubt, advice should be sought from an independent expert/advisor.

Either PL or its affiliates or its directors or its employees or its representatives or its clients or their relatives may have position(s), make market, act as principal or engage in transactions of securities of companies referred to in this report and they may have used the research material prior to publication.

PL may from time to time solicit or perform investment banking or other services for any company mentioned in this document.

PL is registered as Research Analyst under Securities and Exchange Board of India (Research Analysts) Regulations, 2014 PL submits that no material disciplinary action has been taken on us by any Regulatory Authority impacting Equity Research Analysis activities.

PL or its research analysts or its associates or his relatives do not have any financial interest in the subject company.

PL or its research analysts or its associates or his relatives do not have actual/beneficial ownership of one per cent or more securities of the subject company at the end of the month immediately preceding the date of publication of the research report.

PL or its research analysts or its associates or his relatives do not have any material conflict of interest at the time of publication of the research report.

PL or its associates might have received compensation from the subject company in the past twelve months.

PL or its associates might have managed or co-managed public offering of securities for the subject company in the past twelve months or mandated by the subject company for any other assignment in the past twelve months.

PL or its associates might have received any compensation for investment banking or merchant banking or brokerage services from the subject company in the past twelve months.

PL or its associates might have received any compensation for products or services other than investment banking or merchant banking or brokerage services from the subject company in the past twelve months PL or its associates might have received any compensation or other benefits from the subject company or third party in connection with the research report.

PL encourages independence in research report preparation and strives to minimize conflict in preparation of research report. PL or its analysts did not receive any compensation or other benefits from the subject Company or third party in connection with the preparation of the research report. PL or its Research Analysts do not have any material conflict of interest at the time of publication of this report.

It is confirmed that Mrs.Vaishali Parekh B.com, Research Analyst of this report has not received any compensation from the companies mentioned in the report in the preceding twelve months compensation of our Research Analysts is not based on any specific merchant banking, investment banking or brokerage service transactions.

The Research analysts for this report certifies that all of the views expressed in this report accurately reflect his or her personal views about the subject company or companies and its or their securities, and no part of his or her compensation was, is or will be, directly or indirectly related to specific recommendations or views expressed in this report.

The research analysts for this report has not served as an officer, director or employee of the subject company PL or its research analysts have not engaged in market making activity for the subject company

Our sales people, traders, and other professionals or affiliates may provide oral or written market commentary or trading strategies to our clients that reflect opinions that are contrary to the opinions expressed herein, and our proprietary trading and investing businesses may make investment decisions that are inconsistent with the recommendations expressed herein. In reviewing these materials, you should be aware that any or all of the foregoing, among other things, may give rise to real or potential conflicts of interest.

PL and its associates, their directors and employees may (a) from time to time, have a long or short position in, and buy or sell the securities of the subject company or (b) be engaged in any other transaction involving such securities and earn brokerage or other compensation or act as a market maker in the financial instruments of the subject company or act as an advisor or lender/borrower to the subject company or may have any other potential conflict of interests with respect to any recommendation and other related information and opinions.