

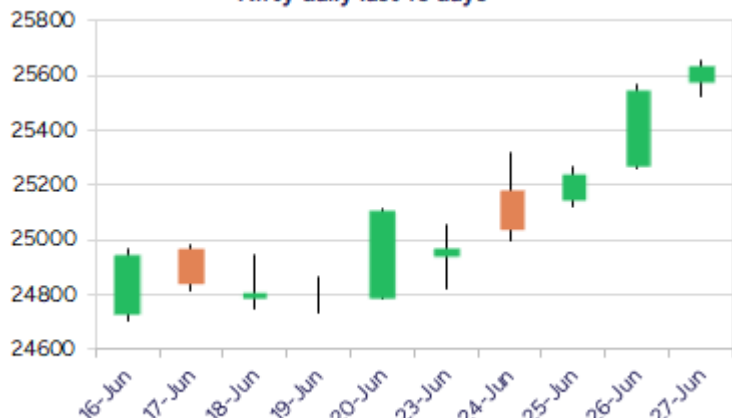
Date: 30<sup>th</sup> June 2025

\* Sensex 84058.90 + 303.03

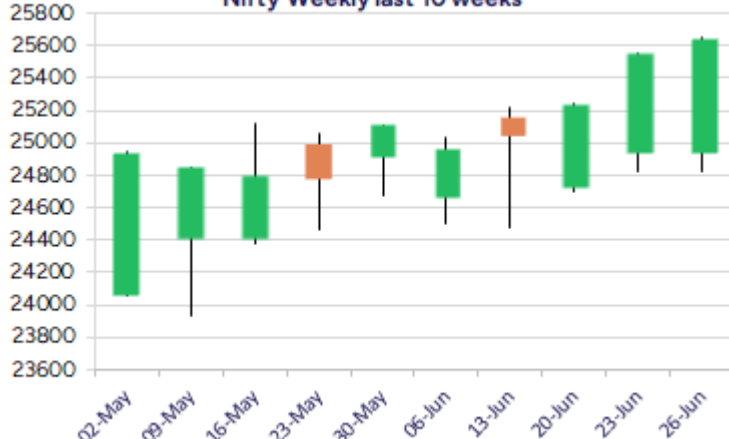
\* Nifty 25637.80 + 88.80

\* Bank Nifty 57443.90 + 237.20

Nifty daily last 10 days



Nifty Weekly last 10 weeks



\*Blue candle → Close rate > Open rate \* Red candle → Close rate < Open rate

## Market Preview

### Nifty gains further; bias maintained strong

Nifty continue to surge ahead with bias maintained strong and is aiming to retest the previous peak zone of 26277 level in the coming days. BankNifty witnessed another session of positive move with overall strength indicated and with bias improving can anticipate for further upward move in the coming days. The market breadth was strong once again with the advance decline indicating a ratio of 3:2 at close.

## Market Forecast

### Nifty daily range 25500-25800

Nifty witnessed a strong session sustaining above the previous days close and with a gradual rise seen during the intraday session has strengthened the bias anticipating for further rise in the coming days. As mentioned earlier, the index would have the near-term support positioned near 25300 zone and on the upside, with the undertone maintained strong, it has opened the gates for higher targets of 25700 and 26200 levels, with bias and sentiment getting better and better.

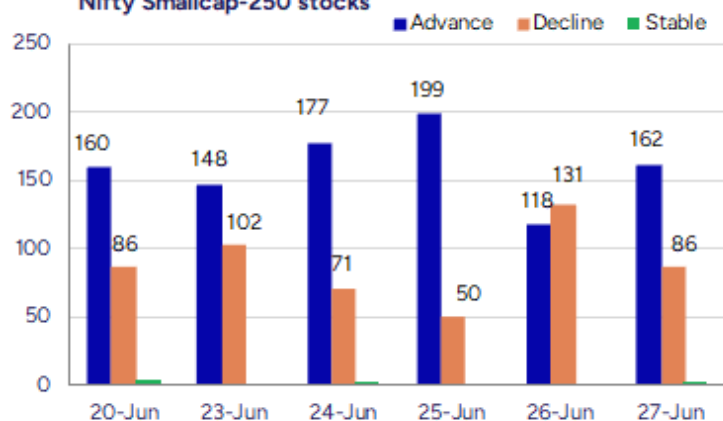
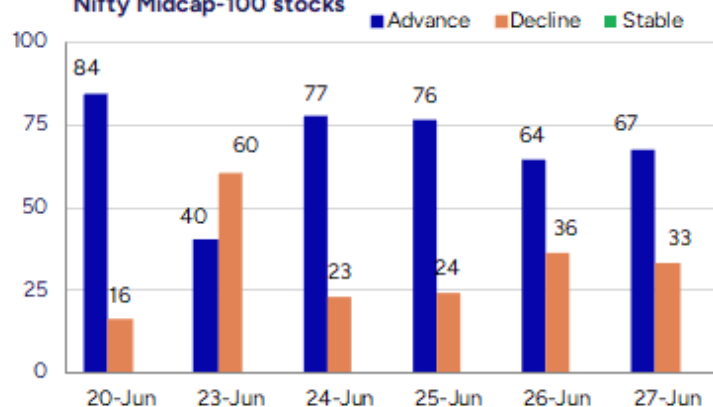
BankNifty continued with the positive move extending the gains and surged ahead with the trend getting stronger breaching above the previous peak zone of 57050 level anticipating for further rise in the coming days. As mentioned earlier, the index would have the important support near 56000 zone which needs to be sustained and, on the upside, with the bias improving can anticipate for fresh targets of 58500 and 60000 levels in the coming days.

The support for the day is seen at 25500 levels while the resistance is seen at 25800 levels. BankNifty would have the daily range of 57000-58000 levels.

Indices	Period	Closing	% Chng	Trend	Reversal	2 Sup	1 Sup	Pivot	1 Res	2 Res
Nifty	Daily	25637.80	0.35%	6	25367.15	25475	25556	25605	25687	25736
	Weekly	25637.80	2.09%	2	25312.05	24545	25091	25372	25919	26199
	Monthly	24750.70	1.71%	1	24390.40	23422	24086	24600	25265	25779
Bank Nifty	Daily	57443.90	0.41%	6	56876.60	56823	57133	57304	57615	57786
	Weekly	57443.90	2.12%	1	56982.40	55211	56327	56900	58017	58589
	Monthly	55749.70	1.20%	2	53879.10	52648	54199	55036	56587	57424
Sensex	Daily	84058.90	0.36%	6	83131.55	83487	83773	83931	84217	84375
	Weekly	84058.90	2.00%	2	83079.45	80602	82330	83209	84938	85817
	Monthly	81451.01	1.51%	1	80320.40	77296	79374	81046	83123	84796

**Gainers - Losers ( Nifty 500 Stocks )**

Gainers				Losers			
Company Name	Last Price	% Gain	Volume	Company Name	Last Price	% Loss	Volume
Prime Focus	136.83	19.99	20958880	Medico Remedies	39.76	-18.86	3615562
Net Avenue Tech	6.6	14.78	216000	Supreme Holding	81.56	-11.03	382472
Almondz Global	22.71	13.27	2155072	ConfidencePetro	50.41	-8.99	9088305
Himadri Special	505.15	12.52	54672122	KCK Ind	40.75	-8.12	372500
Sangam India	491.9	11.61	465500	TD Power System	505.25	-6.46	3415222
Ndr Auto Compon	1078.55	11.47	637488	Tamil Telecom	11.02	-6.21	146610
LLOYDS ENTER	88.94	10.48	18631497	Digitide Solut	201.85	-6.14	1504546

**Nifty Smallcap-250 stocks**

**Nifty Midcap-100 stocks**


## Nifty Daily chart with RSI indicator



## BankNifty Daily chart with RSI indicator

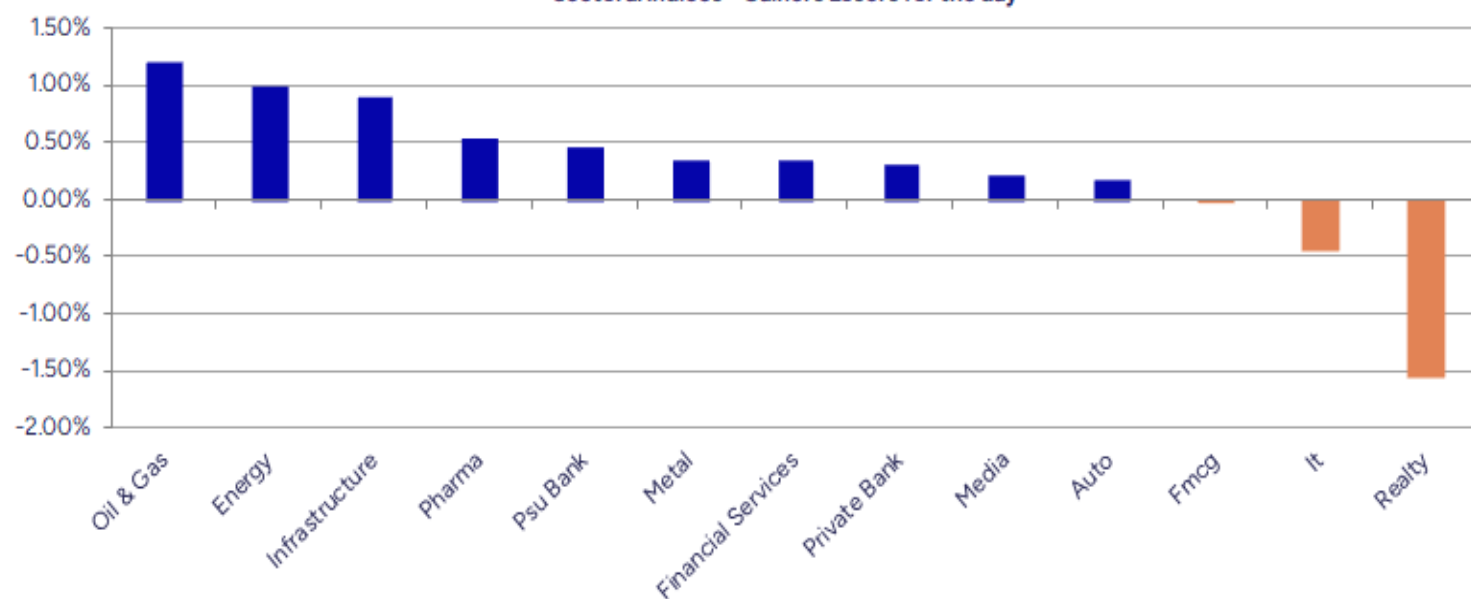


Breakouts - Cross above 200 DMA				Breakdown - Cross below 200 DMA			
Company Name	LCP	Change %	200 DMA	Company Name	LCP	Change %	200 DMA
Prime Focus	136.83	15.38	118.59	Phoenix Mills	1570.6	-3.20	1622.52
Silver Touch Te	766.95	8.21	708.77	Gopal Snacks	346.35	-2.51	355.27
Hubtown	258.22	6.77	241.85	Electrosteel	133.06	-2.36	136.28
Bang Overseas	61.36	6.51	57.61	Bharat Rasayan	10300	-2.14	10525.18
Avro India	182.75	5.64	173	Vardhman Acryli	48.5	-2.08	49.53
Pondy Oxides	848.25	4.96	808.17	Xpro India	1199.2	-1.57	1218.31
Inspirsys Solu	106.27	4.79	101.41	KRISHCA	275.75	-1.43	279.74
Shivalik Bimeta	557.25	4.70	532.24	Apeejay Park	161.96	-1.35	164.18
Archies	24.16	4.54	23.11	Archidply Decor	91.18	-1.28	92.36
Indraprastha	449.35	4.12	431.59	Landmark Cars	529.55	-1.23	536.13
Oriental Carbon	226.48	2.91	220.07	Esprit Stones	108.45	-1.19	109.76
Slone Infosyste	268	2.86	260.54	VIP Clothing	39.85	-1.17	40.32
GVP Infotech	11.19	2.75	10.89	Greenply Ind	314.65	-0.84	317.3
Usha Martin	355.55	2.63	346.43	IFB Industries	1553.9	-0.83	1566.9
Torrent Pharma	3341.4	2.60	3256.57	Keynote Finance	273.05	-0.78	275.2
Assoc Alcohol	1122.4	2.24	1097.82	Refex Ind	454.9	-0.70	458.1
Williamson Mago	34.73	2.09	34.02	Sobha	1455.1	-0.66	1464.84
Sreeleathers	255.03	1.96	250.13	Nitin Spinners	386.4	-0.53	388.45

\* Stocks crossing above its Simple Moving Average (200DMA)

\* Stocks crossing below its Simple Moving Average (200DMA)

Sectoral Indices - Gainers Losers for the day



Stocks witnessing a volume surge as compared to their 5 day average volume

Watch out for the stocks that have seen a huge spurt in its share price over the last three days

Volume Shockers - NSE					
Company name	LCP	% Chg	Volume	Avg Vol *	% Chg
Diamond Power	129.43	0.9	5997564	6800	88094
Jai Balaji Ind	134.58	2.44	14605246	54390	26753
Prime Focus	136.83	19.99	20958880	152269	13664
Thomas Scott	403.3	10	352656	4062	8581
Hb Stockhol	114.65	4.46	930126	10914	8422
Akzo Nobel	3418.6	7.19	1245688	20363	6017
Sky Gold	323.55	-1.15	1378135	25989	5203
Touchwood Enter	121.36	3.58	193804	3929	4833
Orbit Exports	229.95	7.27	982375	20004	4811
Remsons Ind	147.2	2.17	752053	21094	3465
HEG	509.7	2.9	2792225	80062	3388
Laxmi Goldorna	707.85	2.99	35932	1094	3185
Hubtown	258.22	10.43	10741074	343863	3024
SML Isuzu	2034.1	8.61	378642	12295	2980
Kirloskar Ind	4196.7	7.6	104502	3456	2924
Balaxi Pharma	50.05	0.14	1126372	38449	2829
Info Edge	1508.1	-0.55	5582714	196062	2747
Brainbees Solu	390.8	-1.51	29230205	1056728	2666
KCK Industries	40.75	-8.12	372500	13600	2639
Sundram	998.8	-0.23	1671289	64845	2477

\* the Average Volume of last 5 days

Price Shockers - NSE				
Company name	LCP	Prv Close	% Chg	Volume
Orbit Exports	229.95	172.42	33.37	982375
Thomas Scott	403.3	303.05	33.08	352656
Jai Balaji Ind	134.58	101.14	33.06	14605246
ABM Inter	67.58	53.2	27.03	11285
Kirloskar Bros	2327.8	1857.4	25.33	3260347
Hubtown	258.22	207.71	24.32	10741074
Hb Stockhol	114.65	92.23	24.31	930126
Rajdarshan Ind	56.46	46.3	21.94	69332
Indifra	23.1	18.95	21.9	4000
Prime Focus	136.83	113.07	21.01	20958880
Balaji Amines	1789	1490.1	20.06	660420
Kirloskar Ind	4196.7	3524.2	19.08	104502
Diamond Power	129.43	109.9	17.77	5997564
Onward Tech	358.5	305.5	17.35	396628
Pondy Oxides	848.25	731	16.04	1071501
Pondy Oxides	848.25	731	16.04	1071501
Nacl Industries	207.98	179.67	15.76	668944
SML Isuzu	2034.1	1757.3	15.75	378642
Sri Adhikari	917.85	792.95	15.75	19327
Dolphin Offshor	427.4	369.25	15.75	15477

\* the % price rise of the last 3 days

Nifty 50 stocks - Summary Details											
Symbol	LTP	Chng	% Chng	Volume (lacs)	Turnover (crs.)	52w High	Diff with 52w H	52w Low	Diff with 52w L	365 days % chng	30 days % chng
NIFTY 50	25637.80	88.80	0.35%	5639.08	47104.07	26277.35	2.43%	21743.65	17.91%	2.91%	7.04%
ADANIENT	2644.80	58.60	2.27%	40.49	1070.01	3258.00	18.82%	2025.00	30.61%	1.81%	-18.43%
ADANIPTS	1440.00	10.70	0.75%	28.88	417.32	1604.95	10.28%	995.65	44.63%	1.79%	-2.62%
APOLLOHOSP	7310.00	208.50	2.94%	5.24	378.50	7545.35	3.12%	6001.00	21.81%	0.40%	15.72%
ASIANPAINT	2362.00	72.20	3.15%	15.55	363.15	3394.90	30.43%	2124.75	11.17%	-1.62%	-20.03%
AXISBANK	1223.00	-10.50	-0.85%	60.68	744.67	1339.65	8.71%	933.50	31.01%	3.17%	-4.04%
BAJAJ-AUTO	8470.00	37.00	0.44%	5.04	426.13	12774.00	33.69%	7089.35	19.47%	-5.91%	-10.99%
BAJAJFINSV	2036.00	-16.60	-0.81%	63.13	1287.19	2135.00	4.64%	1523.25	33.66%	1.17%	28.33%
BAJFINANCE	944.00	-7.50	-0.79%	216.32	2043.57	978.80	3.56%	642.50	46.93%	-89.62%	-86.71%
BEL	416.40	6.30	1.54%	413.96	1714.50	426.50	2.37%	240.25	73.32%	6.41%	33.65%
BHARTIARTL	2020.00	5.70	0.28%	64.06	1296.67	2039.00	0.93%	1408.45	43.42%	9.25%	38.01%
CIPLA	1506.40	8.60	0.57%	18.52	277.62	1702.05	11.49%	1335.00	12.84%	2.25%	2.35%
COALINDIA	395.70	1.55	0.39%	162.53	640.87	543.55	27.20%	349.25	13.30%	-1.45%	-15.91%
DRREDDY	1302.50	-19.00	-1.44%	17.71	231.25	1421.49	8.37%	1020.00	27.70%	6.30%	-78.23%
EICHERMOT	5630.00	18.50	0.33%	4.14	233.97	5906.50	4.68%	4508.75	24.87%	4.12%	18.39%
GRASIM	2863.30	-20.00	-0.69%	6.79	194.33	2896.00	1.13%	2276.95	25.75%	10.29%	12.97%
HCLTECH	1728.70	4.60	0.27%	64.78	1117.68	2012.20	14.09%	1302.75	32.70%	4.36%	19.42%
HDFCBANK	2011.50	11.70	0.59%	141.07	2837.86	2027.10	0.77%	1588.05	26.66%	4.96%	18.82%
HDFCLIFE	804.95	5.50	0.69%	172.36	1389.34	811.20	0.77%	584.30	37.76%	3.05%	35.72%
HEROMOTOCO	4320.00	42.00	0.98%	5.43	234.98	6246.25	30.84%	3344.00	29.19%	-1.39%	-21.55%
HINDALCO	696.00	5.40	0.78%	56.67	394.71	772.65	9.92%	546.45	27.37%	4.72%	2.36%
HINDUNILVR	2308.10	27.30	1.20%	10.51	241.68	3035.00	23.95%	2136.00	8.06%	-4.18%	-6.74%
ICICIBANK	1457.90	18.80	1.31%	225.33	3284.29	1471.60	0.93%	1153.00	26.44%	-0.50%	18.15%
INDUSINDBK	860.30	24.20	2.89%	126.48	1086.61	1521.00	43.44%	606.00	41.96%	1.88%	-44.18%
INFY	1611.00	-5.00	-0.31%	89.12	1435.68	2006.45	19.71%	1307.00	23.26%	2.92%	4.89%
ITC	420.00	-0.30	-0.07%	214.10	897.85	528.50	20.53%	390.15	7.65%	-3.13%	-0.86%
JIOFIN	324.60	12.10	3.87%	606.48	1959.48	363.00	10.58%	198.65	63.40%	7.24%	-12.28%
JSWSTEEL	1027.95	-4.60	-0.45%	19.42	200.41	1074.90	4.37%	854.15	20.35%	1.86%	12.33%
KOTAKBANK	2201.00	-2.90	-0.13%	96.46	2124.87	2301.90	4.38%	1679.05	31.09%	6.09%	22.56%
LT	3678.90	19.30	0.53%	27.20	1005.22	3963.50	7.18%	2965.30	24.07%	0.54%	1.57%
M&M	3220.00	4.20	0.13%	50.98	1634.76	3270.95	1.56%	2425.00	32.78%	5.79%	12.78%
MARUTI	12667.00	-48.00	-0.38%	3.46	439.18	13680.00	7.40%	10725.00	18.11%	2.42%	4.24%
NESTLEIND	2458.50	27.10	1.11%	11.88	291.02	2778.00	11.50%	2110.00	16.52%	-1.20%	-4.06%
NTPC	335.75	-1.40	-0.42%	508.45	1721.04	448.45	25.13%	292.80	14.67%	-0.41%	-7.64%
ONGC	244.40	-0.33	-0.13%	216.91	527.78	345.00	29.16%	205.00	19.22%	0.08%	-8.60%
POWERGRID	299.00	5.50	1.87%	155.23	463.53	366.25	18.36%	247.30	20.91%	-0.36%	-10.16%
RELIANCE	1514.00	18.70	1.25%	111.16	1680.77	1608.80	5.89%	1114.85	35.80%	5.15%	-50.62%
SBILIFE	1843.00	-17.80	-0.96%	67.62	1250.27	1936.00	4.80%	1372.55	34.28%	3.19%	28.25%
SBIN	804.55	7.50	0.94%	193.74	1561.23	899.00	10.51%	680.00	18.32%	0.42%	-5.71%
SHRIRAMFIN	700.00	-3.20	-0.46%	75.55	529.94	730.45	4.17%	493.35	41.89%	6.24%	-76.47%
SUNPHARMA	1692.00	22.20	1.33%	53.14	894.52	1960.35	13.69%	1495.25	13.16%	-0.81%	9.77%
TATACONSUM	1121.00	-24.40	-2.13%	6.21	70.18	1250.10	10.33%	882.90	26.97%	0.61%	5.38%
TATAMOTORS	687.50	4.75	0.70%	71.97	495.24	1179.00	41.69%	535.75	28.32%	-4.70%	-28.27%
TATASTEEL	161.29	0.75	0.47%	319.89	518.76	178.19	9.48%	122.62	31.54%	-0.69%	-6.97%
TCS	3445.00	3.20	0.09%	17.78	612.69	4592.25	24.98%	3056.05	12.73%	-1.63%	-10.74%
TECHM	1681.00	-9.20	-0.54%	61.84	1036.35	1807.70	7.01%	1209.40	38.99%	6.14%	19.61%
TITAN	3669.50	-25.20	-0.68%	6.01	220.87	3867.00	5.11%	2925.00	25.45%	2.93%	9.55%
TRENT	6059.00	-48.00	-0.79%	19.35	1167.96	8345.00	27.39%	4488.00	35.00%	9.58%	13.86%
ULTRACEMCO	12240.00	289.00	2.42%	5.01	606.82	12339.00	0.80%	10047.85	21.82%	4.64%	7.25%
WIPRO	265.40	-3.12	-1.16%	89.05	237.05	324.60	18.24%	228.00	16.40%	8.17%	-45.78%
ETERNAL	263.01	-2.17	-0.82%	615.44	1613.68	304.70	13.68%	194.56	35.18%	17.97%	#VALUE!

## Disclaimer / Disclosures

### ANALYST CERTIFICATION

I, Mrs. Vaishali Parekh B.com, Research Analyst, author and the name subscribed to this report, hereby certify that all of the views expressed in this research report accurately reflect our views about the subject issuer(s) or securities. We also certify that no part of our compensation was, is, or will be directly or indirectly related to the specific recommendation(s) or view(s) in this report.

Terms & conditions and other disclosures:

Prabhudas Lilladher Pvt. Ltd, Mumbai, India (hereinafter referred to as "PL") is engaged in the business of Stock Broking, Portfolio Manager, Depository Participant and distribution for third party financial products. PL is a subsidiary of Prabhudas Lilladher Advisory Services Pvt Ltd. which has its various subsidiaries engaged in business of commodity broking, investment banking, financial services (margin funding) and distribution of third party financial/other products, details in respect of which are available at [www.plindia.com](http://www.plindia.com)

This document has been prepared by the Research Division of PL and is meant for use by the recipient only as information and is not for circulation. This document is not to be reported or copied or made available to others without prior permission of PL. It should not be considered or taken as an offer to sell or a solicitation to buy or sell any security.

The information contained in this report has been obtained from sources that are considered to be reliable. However, PL has not independently verified the accuracy or completeness of the same. Neither PL nor any of its affiliates, its directors or its employees accepts any responsibility of whatsoever nature for the information, statements and opinion given, made available or expressed herein or for any omission therein.

Recipients of this report should be aware that past performance is not necessarily a guide to future performance and value of investments can go down as well. The suitability or otherwise of any investments will depend upon the recipient's particular circumstances and, in case of doubt, advice should be sought from an independent expert/advisor.

Either PL or its affiliates or its directors or its employees or its representatives or its clients or their relatives may have position(s), make market, act as principal or engage in transactions of securities of companies referred to in this report and they may have used the research material prior to publication.

PL may from time to time solicit or perform investment banking or other services for any company mentioned in this document.

PL is registered as Research Analyst under Securities and Exchange Board of India (Research Analysts) Regulations, 2014 PL submits that no material disciplinary action has been taken on us by any Regulatory Authority impacting Equity Research Analysis activities.

PL or its research analysts or its associates or his relatives do not have any financial interest in the subject company.

PL or its research analysts or its associates or his relatives do not have actual/beneficial ownership of one per cent or more securities of the subject company at the end of the month immediately preceding the date of publication of the research report.

PL or its research analysts or its associates or his relatives do not have any material conflict of interest at the time of publication of the research report.

PL or its associates might have received compensation from the subject company in the past twelve months.

PL or its associates might have managed or co-managed public offering of securities for the subject company in the past twelve months or mandated by the subject company for any other assignment in the past twelve months.

PL or its associates might have received any compensation for investment banking or merchant banking or brokerage services from the subject company in the past twelve months.

PL or its associates might have received any compensation for products or services other than investment banking or merchant banking or brokerage services from the subject company in the past twelve months PL or its associates might have received any compensation or other benefits from the subject company or third party in connection with the research report.

PL encourages independence in research report preparation and strives to minimize conflict in preparation of research report. PL or its analysts did not receive any compensation or other benefits from the subject Company or third party in connection with the preparation of the research report. PL or its Research Analysts do not have any material conflict of interest at the time of publication of this report.

It is confirmed that Mrs.Vaishali Parekh B.com, Research Analyst of this report has not received any compensation from the companies mentioned in the report in the preceding twelve months compensation of our Research Analysts is not based on any specific merchant banking, investment banking or brokerage service transactions.

The Research analysts for this report certifies that all of the views expressed in this report accurately reflect his or her personal views about the subject company or companies and its or their securities, and no part of his or her compensation was, is or will be, directly or indirectly related to specific recommendations or views expressed in this report.

The research analysts for this report has not served as an officer, director or employee of the subject company PL or its research analysts have not engaged in market making activity for the subject company

Our sales people, traders, and other professionals or affiliates may provide oral or written market commentary or trading strategies to our clients that reflect opinions that are contrary to the opinions expressed herein, and our proprietary trading and investing businesses may make investment decisions that are inconsistent with the recommendations expressed herein. In reviewing these materials, you should be aware that any or all of the foregoing, among other things, may give rise to real or potential conflicts of interest.

PL and its associates, their directors and employees may (a) from time to time, have a long or short position in, and buy or sell the securities of the subject company or (b) be engaged in any other transaction involving such securities and earn brokerage or other compensation or act as a market maker in the financial instruments of the subject company or act as an advisor or lender/borrower to the subject company or may have any other potential conflict of interests with respect to any recommendation and other related information and opinions.