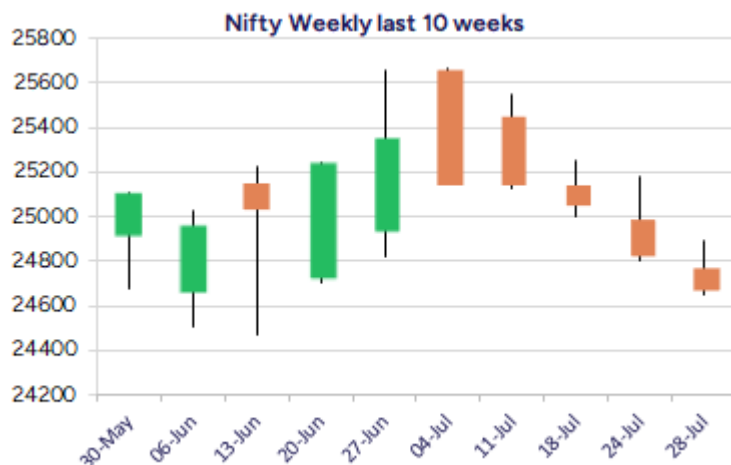
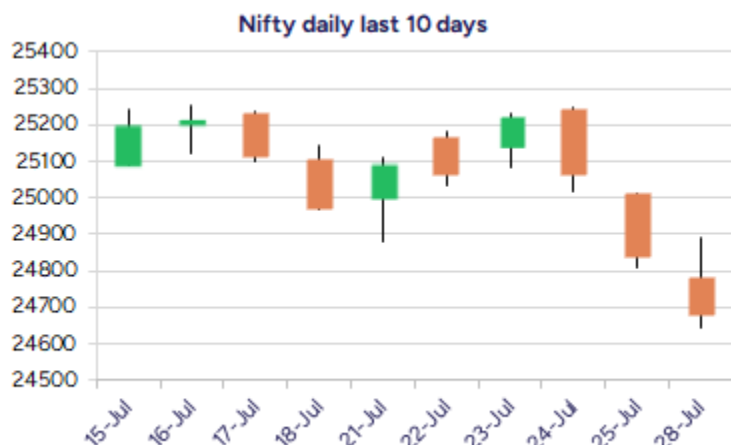


Date: 29th July 2025

* Sensex 80891.02 - 572.07

* Nifty 24680.90 - 156.10

* Bank Nifty 56084.90 - 444.00



*Blue candle → Close rate > Open rate * Red candle → Close rate < Open rate

Market Preview

Nifty bias turning weak; 24500 crucial support zone

Nifty once again slipped down with heavy profit booking witnessed and has weakened the bias overall with next major support positioned near 24500 zone. BankNifty losing steam has once again arrived near the 56000 zone which is the important support area and needs to sustain to maintain the overall trend intact. The market breadth was weak once again with the advance decline indicating a ratio of 1:3 at close.

Market Forecast

Nifty daily range 24500-24900

Nifty after witnessing some positive move in the morning session once again gave in and continued with the slide extending the losses moving below the 24700 zone with bias getting weak and the sentiment maintained with a cautious approach as of now. The index has next got the crucial and important support positioned near the 24500 level which needs to be sustained failing which the overall trend would turn weak. One the upside, a decisive move past the important zone at 24900 level would be necessary to improve the bias and thereafter expect for fresh upward move.

BankNifty, amid some volatile session in the first half further lost steam and slipped down to arrive near the important support zone at 56000 level with bias and sentiment getting into a cautious mode. The index would need to sustain the crucial support zone near the 50EMA level at 56000 zone and a revival shall once again bring hopes for further upward move whereas a decisive breach shall weaken the trend and can trigger for fresh downward movement with next major support positioned near 54400 zone.

The support for the day is seen at 24500 levels while the resistance is seen at 24900 levels. BankNifty would have the daily range of 55500-56600 levels.

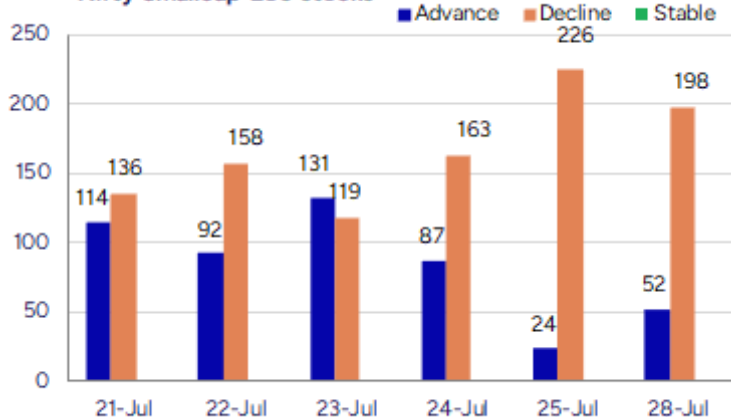
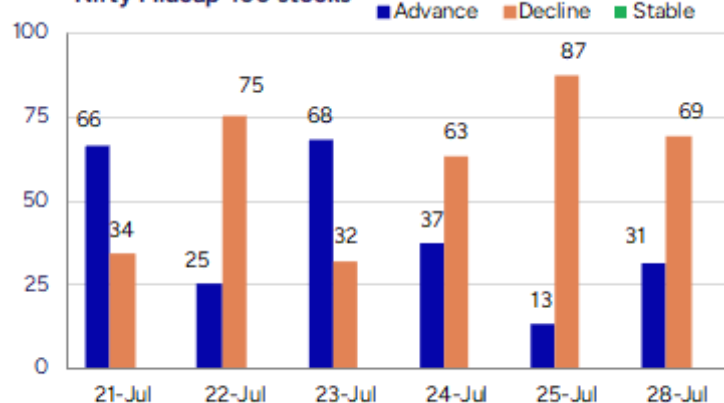
Indices	Period	Closing	% Chng	Trend	Reversal	2 Sup	1 Sup	Pivot	1 Res	2 Res
Nifty	Daily	24680.90	-0.63%	-3	24911.00	24496	24589	24739	24831	24982
	Weekly	24837.00	-1.24%	-3	25322.55	24529	24683	24963	25117	25397
	Monthly	25517.05	3.10%	2	25312.05	24028	24772	25217	25962	26407
Bank Nifty	Daily	56084.90	-0.79%	-2	56703.20	55639	55862	56220	56443	56801
	Weekly	56528.90	-0.40%	-3	57019.65	55644	56086	56702	57144	57759
	Monthly	57312.75	2.80%	3	54910.25	54237	55775	56687	58226	59138
Sensex	Daily	80891.02	-0.70%	-3	81648.95	80294	80593	81075	81373	81856
	Weekly	81463.09	-1.26%	-3	82942.70	80495	80979	81882	82366	83269
	Monthly	83606.46	2.65%	2	81262.65	79027	81317	82703	84992	86378

Gainers - Losers (Nifty 500 Stocks)
Gainers

Company Name	Last Price	% Gain	Volume
Osel Devices	350.2	19.99	48400
Akiko Global	109.05	12.71	286400
Vimta Labs	658.9	12.64	28137015
Ken Enterprises	53.25	11.52	87600
JagsonpalPharma	292.75	11.19	7529739
AVP Infracon	208.9	10.73	549600
Happy Square	77.65	10.61	153600

Losers

Company Name	Last Price	% Loss	Volume
Kellton Tech	26.54	-17.45	14342335
20 Microns	239.47	-10.83	584164
Plada Infotech	17	-10.05	6000
TV TodayNetwork	153.11	-10.04	545350
Paras Defence	704.7	-10	1369484
RPG Life	2245	-9.9	135612
Silky Overseas	107.95	-9.59	26400

Nifty Smallcap-250 stocks

Nifty Midcap-100 stocks


Nifty Daily chart with RSI indicator



BankNifty Daily chart with RSI indicator

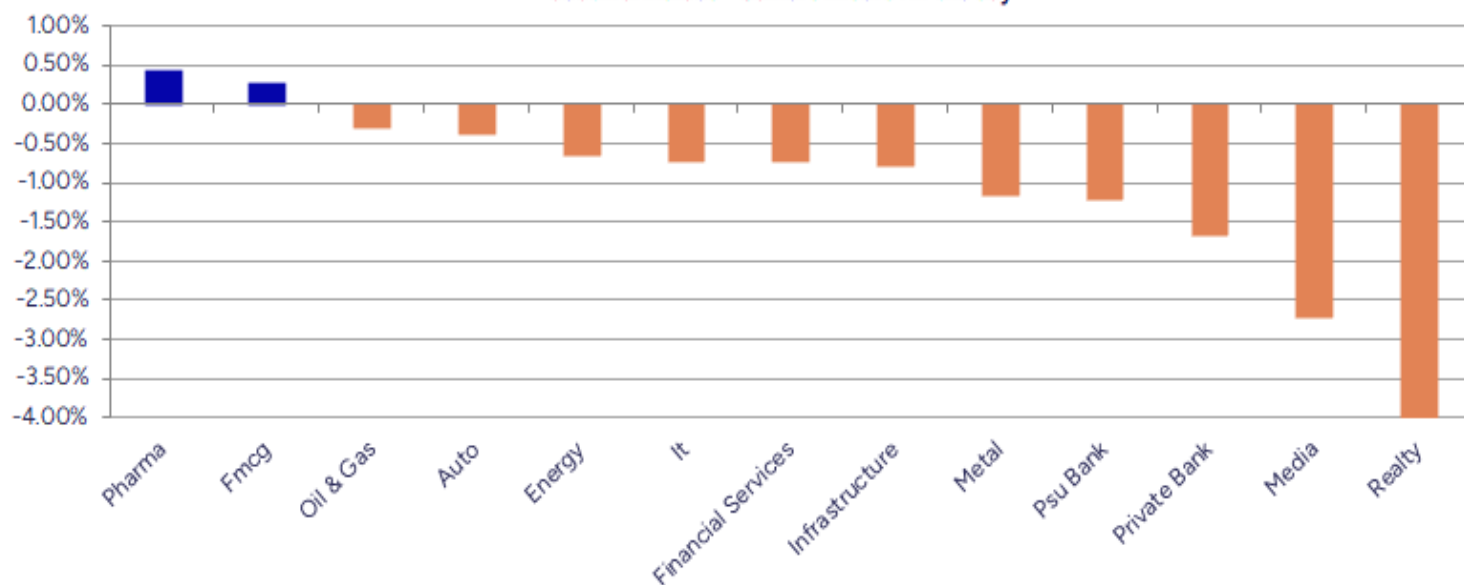


Breakouts - Cross above 200 DMA				Breakdown - Cross below 200 DMA			
Company Name	LCP	Change %	200 DMA	Company Name	LCP	Change %	200 DMA
Archidply Ind	108.21	4.69	103.36	MPS	2247.8	-6.45	2402.83
Omaxe	99.85	4.29	95.74	AION-TECH	66.05	-4.76	69.35
Rappid Valves	300	3.69	289.31	Avanti Feeds	693	-4.17	723.12
Radhika Jewel	102.18	3.35	98.87	TCI Finance	13.36	-3.61	13.86
Rajdarshan Ind	49.71	2.47	48.51	MRPL	134.96	-3.57	139.95
Enfuse Solution	228	2.17	223.15	Kiri Industries	547.8	-3.57	568.06
MTNL	48.4	1.51	47.68	MO Nifty Realt	91.39	-3.54	94.74
Shriram Finance	633.45	1.39	624.78	Astec Life	863.2	-3.54	894.92
S P Apparels	844.05	1.31	833.11	Igarashi Motors	577.4	-3.41	597.79
Rane Holdings	1587.3	1.31	1566.82	Tamil Newsprint	157.26	-3.37	162.75
IZMO	389.5	1.30	384.5	CSL Fin	300.4	-3.19	310.3
MOTHERSON	101.88	1.07	100.8	Sundrop Brands	844.25	-3.02	870.51
IGL	204	0.92	202.14	Honeywell Autom	38180	-2.90	39320.18
Jana SFB	458.2	0.87	454.24	La Opala RG	267.5	-2.78	275.16
Sequent Scienti	175.43	0.49	174.58	Innova Captab	879.6	-2.76	904.52
Hero Motocorp	4291.1	0.48	4270.53	The Investment	163.35	-2.65	167.8
Jindal Stainles	659.75	0.40	657.13	Navkar Corp	118.71	-2.48	121.73
Advanced Enzyme	341.25	0.34	340.09	Thomas Scott	327	-2.45	335.2

* Stocks crossing above its Simple Moving Average (200DMA)

* Stocks crossing below its Simple Moving Average (200DMA)

Sectoral Indices - Gainers Losers for the day



Stocks witnessing a volume surge as compared to their 5 day average volume

Watch out for the stocks that have seen a huge spurt in its share price over the last three days

Volume Shockers - NSE					
Company name	LCP	% Chg	Volume	Avg Vol *	% Chg
Archidply Ind	108.21	7.84	832662	8827	9333
Asian Energy	305.05	6.98	3862439	52193	7300
Sudarshan Chem	1366.5	9.3	6657764	93159	7047
Arvind Smart	622.6	-0.38	1162494	25556	4449
Sunrest	51.1	-3.86	100800	2240	4400
KCK Industries	41.95	2.57	592500	13600	4257
BEW Engineering	160.8	-2.72	36500	1125	3144
Shankara Buildi	1055.8	4.47	1619236	67727	2291
Cartrade	2066.9	9.09	5360245	253432	2015
Manorama Indust	1687	6.99	2293351	151922	1410
Grill Splendour	123	-3.91	56400	3840	1369
TV TodayNetwork	153.11	-10.04	545350	38812	1305
JagsonpalPharma	292.75	11.19	7529739	556928	1252
TTK Prestige	636.95	0.98	433475	35076	1136
Nuvoco Vistas	408.7	-0.99	1189570	105255	1030
Vijaya Diagnost	1141.35	6.62	2506567	222272	1028
Tasty Bite	11448	6.15	17272	1541	1021
Transport Corp	1195.8	-0.68	178061	16756	963
Sigachi Ind	38.76	-0.77	10923755	1046438	944
Rajoo Engineers	108.75	-5.01	7447426	715684	941

* the Average Volume of last 5 days

Price Shockers - NSE				
Company name	LCP	Prv Close	% Chg	Volume
Vimta Labs	658.9	513.25	28.38	28137015
Times Guaranty	241.12	187.95	28.29	473563
Sharda Crop	1090.45	883.1	23.48	7861451
Baweja Studios	71.7	58.25	23.09	50400
Omax Autos	130.45	107.39	21.47	3407528
Pondy Oxides	1131.65	948.5	19.31	1396755
V R Infraspace	205	176	16.48	800
BB Triplewall	206.28	177.6	16.15	24668
Chembond Chem	206.62	178.5	15.75	79295
Blue Coast	41.55	35.91	15.71	485
Ortin Global	12.85	11.11	15.66	7237
United Polyfab	26.34	22.81	15.48	956419
Indo Borax	280.27	244.52	14.62	408644
Tatva Chintan	1134.35	997.4	13.73	340703
Agro Phos India	40.91	36.01	13.61	380821
Happy Square	77.65	68.55	13.27	153600
SPIC	98.33	88.36	11.28	2435513
Globus Spirits	1257.1	1134.1	10.85	281293
Sudarshan Chem	1366.5	1233.9	10.75	6657764
Felix Industrie	202.2	182.7	10.67	190500

* the % price rise of the last 3 days

Nifty 50 stocks - Summary Details											
Symbol	LTP	Chng	% Chng	Volume (lacs)	Turnover (crs.)	52w High	Diff with 52w H	52w Low	Diff with 52w L	365 days % chng	30 days % chng
NIFTY 50	24680.90	-156.10	-0.63%	2621.18	24974.93	26277.35	6.08%	21743.65	13.51%	-3.12%	0.01%
ADANIENT	2528.00	-22.10	-0.87%	4.28	109.03	3258.00	22.41%	2025.00	24.84%	-3.64%	-17.22%
ADANIPTS	1376.90	-19.40	-1.39%	7.90	109.60	1604.95	14.21%	995.65	38.29%	-3.05%	-9.49%
APOLLOHOSP	7365.00	-103.50	-1.39%	2.41	177.89	7635.00	3.54%	6001.00	22.73%	2.19%	12.06%
ASIANPAINT	2359.50	23.30	1.00%	6.50	152.89	3394.90	30.50%	2124.75	11.05%	-0.95%	-20.81%
AXISBANK	1074.00	-12.10	-1.11%	90.30	972.69	1281.65	16.20%	933.50	15.05%	-11.35%	-7.75%
BAJAJ-AUTO	8075.00	-0.50	-0.01%	2.32	188.30	12774.00	36.79%	7089.35	13.90%	-4.27%	-14.93%
BAJAJFINSV	1975.90	-9.90	-0.50%	14.70	292.83	2135.00	7.45%	1523.25	29.72%	-2.85%	25.17%
BAJFINANCE	881.00	-32.75	-3.58%	140.10	1252.12	978.80	9.99%	642.50	37.12%	-3.51%	-86.54%
BEL	391.00	-4.20	-1.06%	198.54	772.21	436.00	10.32%	240.25	62.75%	-4.66%	27.53%
BHARTIARTL	1889.90	-48.00	-2.48%	35.75	678.93	2045.80	7.62%	1422.60	32.85%	-4.40%	27.96%
CIPLA	1570.00	37.50	2.45%	38.43	598.53	1702.05	7.76%	1335.00	17.60%	2.00%	-2.70%
COALINDIA	378.00	-2.80	-0.74%	45.20	172.14	543.55	30.46%	349.25	8.23%	-3.39%	-25.31%
DRREDDY	1287.00	9.10	0.71%	15.54	199.13	1421.49	9.46%	1020.00	26.18%	-1.78%	-81.42%
EICHERMOT	5380.00	-53.00	-0.98%	3.22	174.02	5906.50	8.91%	4508.75	19.32%	-4.01%	8.39%
GRASIM	2721.00	12.40	0.46%	5.47	149.76	2896.00	6.04%	2276.95	19.50%	-5.33%	-4.74%
HCLTECH	1468.00	-22.10	-1.48%	44.05	649.50	2012.20	27.05%	1302.75	12.68%	-13.53%	-8.88%
HDFCBANK	2009.90	5.30	0.26%	60.30	1212.59	2037.70	1.36%	1593.00	26.17%	-0.51%	23.88%
HDFCLIFE	761.40	-0.95	-0.12%	15.10	115.30	820.75	7.23%	584.30	30.31%	-5.53%	8.39%
HEROMOTOCO	4292.00	61.30	1.45%	4.63	198.13	6246.25	31.29%	3344.00	28.35%	-2.07%	-22.78%
HINDALCO	686.00	-7.45	-1.07%	50.32	346.24	772.65	11.21%	546.45	25.54%	-0.56%	3.87%
HINDUNILVR	2439.00	23.60	0.98%	9.88	240.46	3035.00	19.64%	2136.00	14.19%	4.70%	-10.91%
ICICIBANK	1488.00	10.90	0.74%	75.07	1116.35	1500.00	0.80%	1153.00	29.05%	1.02%	22.36%
INDUSINDBK	799.60	-24.10	-2.93%	59.22	482.72	1498.00	46.62%	606.00	31.95%	-3.96%	-41.33%
INFY	1514.90	-0.80	-0.05%	64.40	971.27	2006.45	24.50%	1307.00	15.91%	-5.74%	-19.33%
ITC	409.80	0.40	0.10%	81.19	332.78	528.50	22.46%	390.15	5.04%	-2.21%	-18.48%
JIOFIN	307.50	-3.75	-1.20%	157.26	488.49	363.00	15.29%	198.65	54.79%	-3.77%	-6.22%
JSWSTEEL	1030.00	3.10	0.30%	18.39	188.55	1074.90	4.18%	854.15	20.59%	-0.19%	14.03%
KOTAKBANK	1968.70	-155.90	-7.34%	138.24	2747.15	2301.90	14.47%	1679.05	17.25%	-3.77%	17.13%
LT	3421.50	-21.40	-0.62%	22.56	772.47	3963.50	13.67%	2965.30	15.38%	-6.42%	-6.44%
M&M	3210.00	-36.40	-1.12%	19.40	624.38	3303.00	2.82%	2425.00	32.37%	1.35%	12.42%
MARUTI	12335.00	-69.00	-0.56%	2.93	363.48	13680.00	9.83%	10725.00	15.01%	-1.88%	-2.05%
NESTLEIND	2237.00	-37.60	-1.65%	9.40	210.71	2778.00	19.47%	2110.00	6.02%	-7.49%	-8.17%
NTPC	332.80	-0.40	-0.12%	46.06	153.89	448.45	25.79%	292.80	13.66%	-1.51%	-15.92%
ONGC	239.76	-0.53	-0.22%	68.65	164.77	345.00	30.50%	205.00	16.96%	-1.05%	-27.54%
POWERGRID	292.55	0.45	0.15%	70.37	206.11	366.25	20.12%	247.30	18.30%	-2.39%	-15.14%
RELIANCE	1387.10	-4.60	-0.33%	77.48	1080.19	1551.00	10.57%	1114.85	24.42%	-8.16%	-53.89%
SBILIFE	1848.10	16.00	0.87%	11.82	218.60	1936.00	4.54%	1372.55	34.65%	-1.00%	4.63%
SBIN	796.55	-10.00	-1.24%	77.34	620.06	889.10	10.41%	680.00	17.14%	0.14%	-6.48%
SHRIRAMFIN	632.00	16.15	2.62%	115.83	729.65	730.45	13.48%	493.35	28.10%	-12.02%	-78.95%
SUNPHARMA	1699.20	0.20	0.01%	21.68	369.11	1960.35	13.32%	1553.05	9.41%	0.68%	-0.89%
TATACONSUM	1063.00	8.60	0.82%	12.20	129.55	1234.30	13.88%	882.90	20.40%	-6.22%	-13.12%
TATAMOTORS	684.05	-3.35	-0.49%	77.88	537.82	1179.00	41.98%	535.75	27.68%	0.07%	-38.53%
TATASTEEL	159.34	-2.09	-1.29%	192.96	309.69	170.18	6.37%	122.62	29.95%	-0.01%	-0.69%
TCS	3085.80	-50.00	-1.59%	33.74	1043.55	4592.25	32.80%	3056.05	0.97%	-8.87%	-28.53%
TECHM	1450.90	-11.00	-0.75%	10.70	155.62	1807.70	19.74%	1209.40	19.97%	-12.69%	-5.14%
TITAN	3385.00	-77.80	-2.25%	6.04	205.79	3867.00	12.46%	2925.00	15.73%	-5.55%	-0.90%
TRENT	5000.00	-43.00	-0.85%	14.51	732.35	8345.00	40.08%	4488.00	11.41%	-16.22%	-6.50%
ULTRACEMCO	12239.00	-11.00	-0.09%	2.14	262.45	12714.00	3.74%	10047.85	21.81%	0.30%	4.94%
WIPRO	250.20	-4.00	-1.57%	89.97	225.80	324.60	22.92%	228.00	9.74%	-2.21%	-50.61%
ETERNAL	307.05	-3.50	-1.13%	248.83	769.28	314.45	2.35%	194.80	57.62%	18.59%	#VALUE!

Disclaimer / Disclosures

ANALYST CERTIFICATION

I, Mrs. Vaishali Parekh B.com, Research Analyst, author and the name subscribed to this report, hereby certify that all of the views expressed in this research report accurately reflect our views about the subject issuer(s) or securities. We also certify that no part of our compensation was, is, or will be directly or indirectly related to the specific recommendation(s) or view(s) in this report.

Terms & conditions and other disclosures:

Prabhudas Lilladher Pvt. Ltd, Mumbai, India (hereinafter referred to as "PL") is engaged in the business of Stock Broking, Portfolio Manager, Depository Participant and distribution for third party financial products. PL is a subsidiary of Prabhudas Lilladher Advisory Services Pvt Ltd. which has its various subsidiaries engaged in business of commodity broking, investment banking, financial services (margin funding) and distribution of third party financial/other products, details in respect of which are available at www.plindia.com

This document has been prepared by the Research Division of PL and is meant for use by the recipient only as information and is not for circulation. This document is not to be reported or copied or made available to others without prior permission of PL. It should not be considered or taken as an offer to sell or a solicitation to buy or sell any security.

The information contained in this report has been obtained from sources that are considered to be reliable. However, PL has not independently verified the accuracy or completeness of the same. Neither PL nor any of its affiliates, its directors or its employees accepts any responsibility of whatsoever nature for the information, statements and opinion given, made available or expressed herein or for any omission therein.

Recipients of this report should be aware that past performance is not necessarily a guide to future performance and value of investments can go down as well. The suitability or otherwise of any investments will depend upon the recipient's particular circumstances and, in case of doubt, advice should be sought from an independent expert/advisor.

Either PL or its affiliates or its directors or its employees or its representatives or its clients or their relatives may have position(s), make market, act as principal or engage in transactions of securities of companies referred to in this report and they may have used the research material prior to publication.

PL may from time to time solicit or perform investment banking or other services for any company mentioned in this document.

PL is registered as Research Analyst under Securities and Exchange Board of India (Research Analysts) Regulations, 2014 PL submits that no material disciplinary action has been taken on us by any Regulatory Authority impacting Equity Research Analysis activities.

PL or its research analysts or its associates or his relatives do not have any financial interest in the subject company.

PL or its research analysts or its associates or his relatives do not have actual/beneficial ownership of one per cent or more securities of the subject company at the end of the month immediately preceding the date of publication of the research report.

PL or its research analysts or its associates or his relatives do not have any material conflict of interest at the time of publication of the research report.

PL or its associates might have received compensation from the subject company in the past twelve months.

PL or its associates might have managed or co-managed public offering of securities for the subject company in the past twelve months or mandated by the subject company for any other assignment in the past twelve months.

PL or its associates might have received any compensation for investment banking or merchant banking or brokerage services from the subject company in the past twelve months.

PL or its associates might have received any compensation for products or services other than investment banking or merchant banking or brokerage services from the subject company in the past twelve months PL or its associates might have received any compensation or other benefits from the subject company or third party in connection with the research report.

PL encourages independence in research report preparation and strives to minimize conflict in preparation of research report. PL or its analysts did not receive any compensation or other benefits from the subject Company or third party in connection with the preparation of the research report. PL or its Research Analysts do not have any material conflict of interest at the time of publication of this report.

It is confirmed that Mrs.Vaishali Parekh B.com, Research Analyst of this report has not received any compensation from the companies mentioned in the report in the preceding twelve months compensation of our Research Analysts is not based on any specific merchant banking, investment banking or brokerage service transactions.

The Research analysts for this report certifies that all of the views expressed in this report accurately reflect his or her personal views about the subject company or companies and its or their securities, and no part of his or her compensation was, is or will be, directly or indirectly related to specific recommendations or views expressed in this report.

The research analysts for this report has not served as an officer, director or employee of the subject company PL or its research analysts have not engaged in market making activity for the subject company

Our sales people, traders, and other professionals or affiliates may provide oral or written market commentary or trading strategies to our clients that reflect opinions that are contrary to the opinions expressed herein, and our proprietary trading and investing businesses may make investment decisions that are inconsistent with the recommendations expressed herein. In reviewing these materials, you should be aware that any or all of the foregoing, among other things, may give rise to real or potential conflicts of interest.

PL and its associates, their directors and employees may (a) from time to time, have a long or short position in, and buy or sell the securities of the subject company or (b) be engaged in any other transaction involving such securities and earn brokerage or other compensation or act as a market maker in the financial instruments of the subject company or act as an advisor or lender/borrower to the subject company or may have any other potential conflict of interests with respect to any recommendation and other related information and opinions.