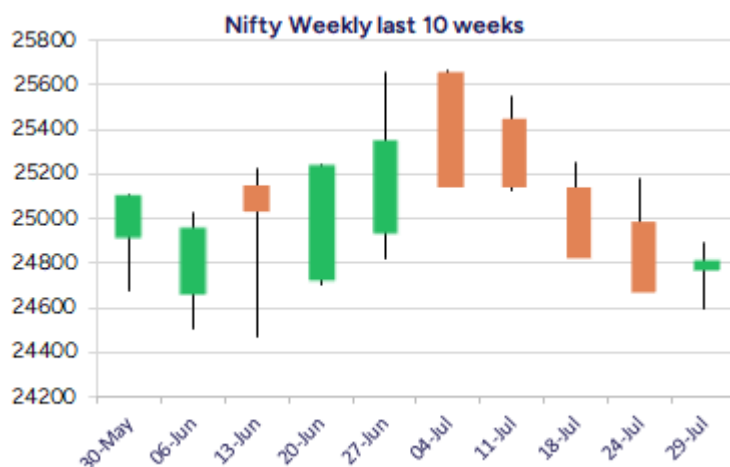
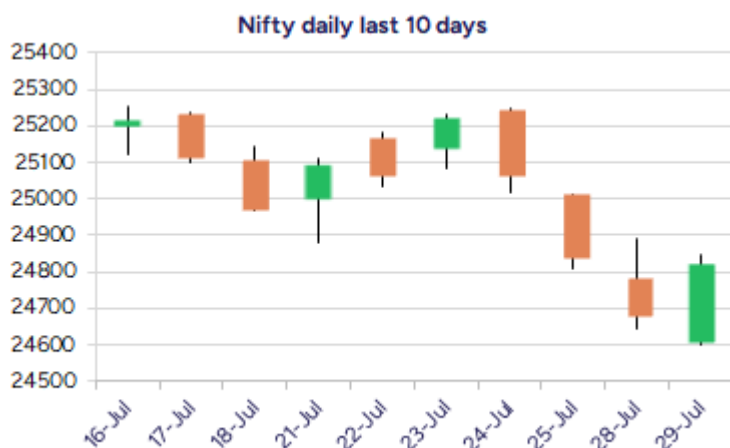


Date: 30th July 2025

* Sensex 81337.95 + 446.93

* Nifty 24821.10 + 140.20

* Bank Nifty 56222.00 + 137.10



*Blue candle → Close rate > Open rate * Red candle → Close rate < Open rate

Market Preview

Nifty recovers strongly to end above 24800 zone

Nifty staged a decent pullback from the 24600 zone and steadily gained momentum to close above the 24800 level with bias and sentiment eased out to some extent. BankNifty recovered from 55900 level with HDFC Bank and ICICI Bank strongly maintaining their positive bias and ended marginally in the green near 56200 level. The market breadth closed on a positive note with the advance decline indicating a ratio of 2:1 at close.

Market Forecast

Nifty daily range 24700-25000

Nifty witnessed a strong recovery from the 24600 zone during the intraday session with a steady gain as the day progressed and ended on a quite optimistic note above 24800 level to expect for further rise in the coming sessions. A decisive close above the 25000 zone would be important for the index which can boost the sentiment and anticipate for next target of 25300 level with currently having 24500 level as the major and crucial support which needs to be sustained, as mentioned earlier.

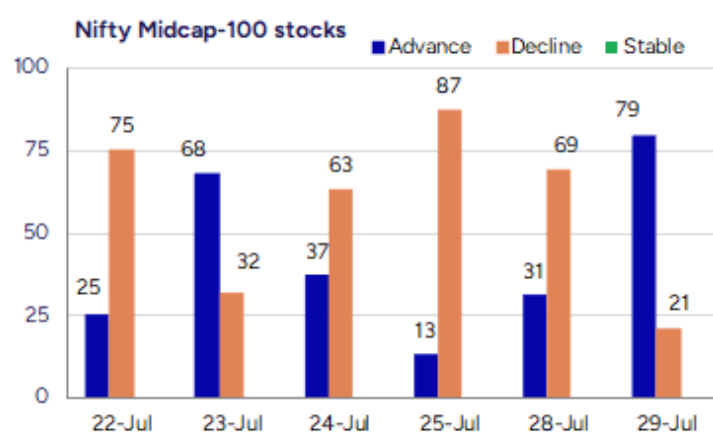
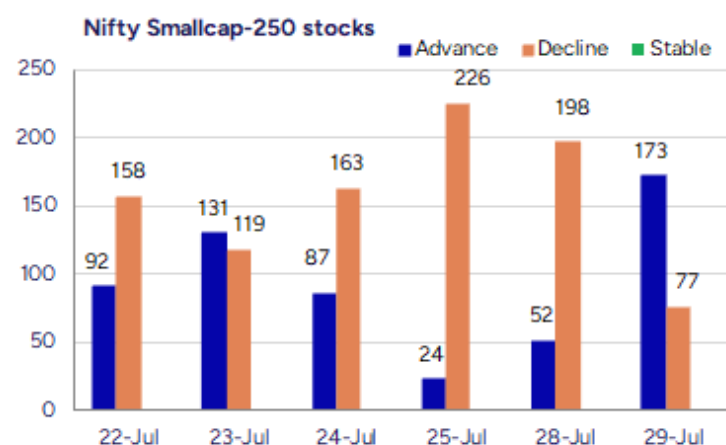
BankNifty, sustained the 55900 zone and indicated a small pullback to end above the 56000 level with bias still maintained intact and once again would need a decent revival to break past the important hurdle at 57400 zone to trigger for fresh upward move in the coming days. The index would need to sustain the crucial support zone near the 50EMA level at 56000 zone with the frontline banking stocks like HDFC Bank and ICICI Bank standing firm and their progress shall decide the further directional move of the index in the coming days.

The support for the day is seen at 24700 levels while the resistance is seen at 25000 levels. BankNifty would have the daily range of 55700-56800 levels.

Indices	Period	Closing	% Chng	Trend	Reversal	2 Sup	1 Sup	Pivot	1 Res	2 Res
Nifty	Daily	24821.10	0.57%	-4	24900.20	24507	24664	24756	24913	25004
	Weekly	24837.00	-1.24%	-3	25322.55	24529	24683	24963	25117	25397
	Monthly	25517.05	3.10%	2	25312.05	24028	24772	25217	25962	26407
Bank Nifty	Daily	56222.00	0.24%	-3	56664.35	55667	55945	56121	56398	56574
	Weekly	56528.90	-0.40%	-3	57019.65	55644	56086	56702	57144	57759
	Monthly	57312.75	2.80%	3	54910.25	54237	55775	56687	58226	59138
Sensex	Daily	81337.95	0.55%	-4	81624.90	80260	80799	81114	81653	81969
	Weekly	81463.09	-1.26%	-3	82942.70	80495	80979	81882	82366	83269
	Monthly	83606.46	2.65%	2	81262.65	79027	81317	82703	84992	86378

Gainers - Losers (Nifty 500 Stocks)

Gainers				Losers			
Company Name	Last Price	% Gain	Volume	Company Name	Last Price	% Loss	Volume
Hind Rectifiers	1712.2	19.99	1120598	Moving Media	70.4	-10.83	248000
Osel Devices	420.2	19.99	420000	Aeroflex Ind.	186.98	-9.22	4051305
Jayaswal Neco	49.42	19.98	166463210	Crayons Advert	57.7	-8.63	18000
Pearl Polymers	36.87	19.82	1376614	Manorama Indust	1544.1	-8.47	682866
Times Guaranty	285.93	18.58	786159	Manorama Indust	1544.1	-8.47	682866
Navkar Corp	137.23	15.6	5142189	Omfurn India	95.75	-7.44	92400
Ken Enterprises	61.45	15.4	292800	Xpro India	1100.1	-7.31	172864



Nifty Daily chart with RSI indicator



BankNifty Daily chart with RSI indicator

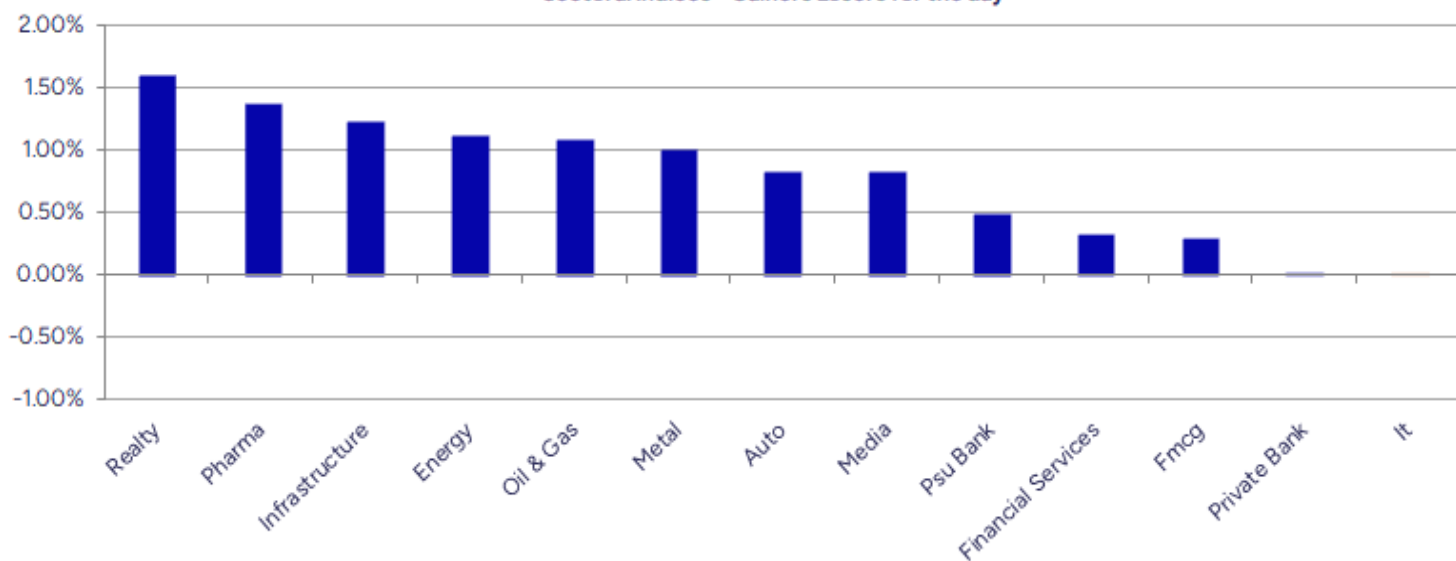


Breakouts - Cross above 200 DMA				Breakdown - Cross below 200 DMA			
Company Name	LCP	Change %	200 DMA	Company Name	LCP	Change %	200 DMA
Pearl Polymers	36.87	14.04	32.33	Tainwala Chem	232.9	-4.72	244.43
Navkar Corp	137.23	12.78	121.68	Aeroflex Ind.	186.98	-3.22	193.2
Kellton Tech	29.34	9.97	26.68	Atmastco L	215.05	-2.46	220.47
Nandani Creatio	44.62	6.26	41.99	Rane Holdings	1531.2	-2.15	1564.77
PNC Infratech	319.3	6.16	300.76	AAVAS Financier	1758.7	-1.84	1791.61
JB Chemicals	1802.6	5.18	1713.85	AKI India	11.56	-1.53	11.74
Tata Chemicals	1000	5.02	952.17	KFin Tech	1126.3	-1.19	1139.9
Kewal Kiran	561.85	4.81	536.06	Valiant Organic	345.95	-0.74	348.52
Transformers	509.25	4.80	485.91	KDDL	2741.6	-0.53	2756.09
Asian Energy	330.05	4.73	315.15	Mahindra Logist	346.8	-0.46	348.42
Reliable Data S	78.17	4.46	74.83	Hindustan Media	87.22	-0.27	87.46
Tania Platforms	642.85	4.40	615.74	Alok Industries	19.42	-0.10	19.44
Elin Electronic	181.39	4.33	173.87	Happy Forgings	953.2	-0.07	953.87
TCPL Packaging	3770	4.06	3622.92	S P Apparels	832.65	-0.02	832.85
Epigral	1953.2	4.04	1877.44				
Voltamp Trans	9285	4.01	8926.82				
Peninsula Land	37.71	3.77	36.34				
GSFC	205.23	3.18	198.9				

* Stocks crossing above its Simple Moving Average (200DMA)

* Stocks crossing below its Simple Moving Average (200DMA)

Sectoral Indices - Gainers Losers for the day



Stocks witnessing a volume surge as compared to their 5 day average volume

Watch out for the stocks that have seen a huge spurt in its share price over the last three days

Volume Shockers - NSE					
Company name	LCP	% Chg	Volume	Avg Vol *	% Chg
Punjab Chemical	1547	14.36	2266866	24576	9124
Puravankara	291.7	10.83	3091310	97779	3062
Nandani Creatio	44.62	8.2	175811	7423	2268
Zuari Agro Chem	248.01	13.25	5996922	358320	1574
Apar Ind	9681.5	11.73	1057309	63510	1565
Flair Writing	341.9	7.58	1545371	97490	1485
AFL	540.8	8.08	5482455	370238	1381
IRB InvIT	61.49	0.56	3786192	274635	1279
Hind Rectifiers	1712.2	19.99	1120598	87714	1178
IIFL Capital	338.15	12.87	4593027	374701	1126
Five-Star Busin	649.35	-3.1	3588444	295334	1115
Bharat Gears	96.95	2.05	428444	38136	1023
KCK Industries	43.25	3.1	147500	13600	985
Guj Themis	389.75	5.92	1654432	163266	913
Gateway Distri	68.28	6.87	7942888	798207	895
Xpro India	1100.1	-7.31	172864	18203	850
P and G	13091	0.92	64144	6781	846
Asahi Songwon	410.5	-5	41923	4501	831
Iris Clothings	31.18	0.45	289266	31294	824
Arvind Smart	609.35	-2.13	233428	25556	813

* the Average Volume of last 5 days

Price Shockers - NSE				
Company name	LCP	Prv Close	% Chg	Volume
Times Guaranty	285.93	220.88	29.45	786159
Hind Rectifiers	1712.2	1349.8	26.85	1120598
Vimta Labs	710.3	584.95	21.43	25686006
Jayaswal Neco	49.42	42.06	17.5	166463210
Punjab Chemical	1547	1317.9	17.38	2266866
Pearl Polymers	36.87	31.55	16.86	1376614
Zuari Agro Chem	248.01	213.57	16.13	5996922
Happy Square	81.45	70.2	16.03	184000
Asian Energy	330.05	285.15	15.75	1262065
Paradeep Phosp	216.24	189.27	14.25	93261252
Sudarshan Chem	1414.3	1250.2	13.13	1502002
Delta Autocorp	80.05	70.95	12.83	145000
Mangalore Chem	353.75	315	12.3	4106879
Shankara Buildi	1132.2	1010.6	12.03	902367
Abha Power	39.1	35.1	11.4	59200
Navkar Corp	137.23	123.77	10.88	5142189
InfoBeans Tech	623.2	564.2	10.46	409810
Chembond Chem	216.95	196.79	10.24	23411
Sri Adhikari	892.9	809.95	10.24	1073
IIFL Capital	338.15	306.8	10.22	4593027

* the % price rise of the last 3 days

Nifty 50 stocks - Summary Details											
Symbol	LTP	Chng	% Chng	Volume (lacs)	Turnover (crs.)	52w High	Diff with 52w H	52w Low	Diff with 52w L	365 days % chng	30 days % chng
NIFTY 50	24821.10	140.20	0.57%	2846.13	25948.54	26277.35	5.54%	21743.65	14.15%	-3.73%	-0.62%
ADANIENT	2545.50	23.20	0.92%	4.25	107.67	3258.00	21.87%	2025.00	25.70%	-4.69%	-18.12%
ADANIPTS	1397.00	21.00	1.53%	7.83	108.52	1604.95	12.96%	995.65	40.31%	-4.46%	-10.81%
APOLLOHOSP	7469.00	112.50	1.53%	3.37	250.26	7635.00	2.17%	6001.00	24.46%	0.66%	10.38%
ASIANPAINT	2406.10	46.50	1.97%	17.43	415.90	3394.90	29.13%	2124.75	13.24%	0.04%	-20.02%
AXISBANK	1065.00	-8.60	-0.80%	156.00	1658.35	1281.65	16.90%	933.50	14.09%	-12.37%	-8.81%
BAJAJ-AUTO	8139.00	49.50	0.61%	2.10	170.31	12774.00	36.28%	7089.35	14.81%	-4.11%	-14.78%
BAJAJFINSV	1973.50	-4.30	-0.22%	8.48	166.83	2135.00	7.56%	1523.25	29.56%	-3.24%	24.67%
BAJFINANCE	887.00	6.50	0.74%	113.24	1001.00	978.80	9.38%	642.50	38.05%	-7.02%	-87.03%
BEL	389.90	0.65	0.17%	253.08	974.62	436.00	10.57%	240.25	62.29%	-6.09%	25.61%
BHARTIARTL	1913.70	23.40	1.24%	37.48	717.42	2045.80	6.46%	1422.60	34.52%	-6.75%	24.82%
CIPLA	1570.30	-1.70	-0.11%	13.04	204.95	1702.05	7.74%	1335.00	17.63%	4.63%	-0.19%
COALINDIA	383.80	5.45	1.44%	48.72	185.54	543.55	29.39%	349.25	9.89%	-4.01%	-25.79%
DRREDDY	1301.00	13.60	1.06%	19.43	251.66	1421.49	8.48%	1020.00	27.55%	-1.05%	-81.28%
EICHERMOT	5479.50	93.50	1.74%	2.17	117.94	5906.50	7.23%	4508.75	21.53%	-4.84%	7.45%
GRASIM	2745.30	18.10	0.66%	7.44	202.79	2896.00	5.20%	2276.95	20.57%	-4.68%	-4.08%
HCLTECH	1475.00	8.90	0.61%	62.24	914.86	2012.20	26.70%	1302.75	13.22%	-14.92%	-10.35%
HDFCBANK	2023.00	14.50	0.72%	99.48	2004.53	2037.70	0.72%	1593.30	26.97%	-0.32%	24.12%
HDFCLIFE	756.50	-4.70	-0.62%	11.29	85.86	820.75	7.83%	584.30	29.47%	-5.67%	8.22%
HEROMOTOCO	4331.00	39.90	0.93%	4.22	182.46	6246.25	30.66%	3344.00	29.52%	-0.68%	-21.68%
HINDALCO	693.95	4.60	0.67%	29.85	206.21	772.65	10.19%	546.45	26.99%	-1.15%	3.26%
HINDUNILVR	2456.40	14.80	0.61%	7.32	179.15	3035.00	19.06%	2136.00	15.00%	5.84%	-9.94%
ICICIBANK	1484.90	-3.50	-0.24%	97.76	1450.24	1500.00	1.01%	1153.00	28.79%	1.79%	23.29%
INDUSINDBK	813.80	11.75	1.46%	167.67	1348.73	1498.00	45.67%	606.00	34.29%	-6.49%	-42.87%
INFY	1513.50	-2.50	-0.16%	70.70	1067.01	2006.45	24.57%	1307.00	15.80%	-5.72%	-19.31%
ITC	408.20	-1.70	-0.41%	68.12	278.80	528.50	22.76%	390.15	4.63%	-2.09%	-18.38%
JIOFIN	322.00	14.65	4.77%	270.84	858.44	363.00	11.29%	198.65	62.09%	-4.98%	-7.40%
JSWSTEEL	1037.60	8.80	0.86%	22.15	230.88	1074.90	3.47%	854.15	21.48%	-0.01%	14.24%
KOTAKBANK	1970.20	3.60	0.18%	50.44	991.02	2301.90	14.41%	1679.05	17.34%	-10.93%	8.42%
LT	3488.00	65.80	1.92%	12.41	429.63	3963.50	12.00%	2965.30	17.63%	-6.99%	-7.00%
M&M	3207.00	-2.80	-0.09%	18.25	584.45	3303.00	2.91%	2425.00	32.25%	0.20%	11.15%
MARUTI	12488.00	148.00	1.20%	2.85	353.40	13680.00	8.71%	10725.00	16.44%	-2.39%	-2.56%
NESTLEIND	2229.00	-0.30	-0.01%	9.01	200.77	2778.00	19.76%	2110.00	5.64%	-9.33%	-10.00%
NTPC	335.30	2.35	0.71%	75.51	251.21	448.45	25.23%	292.80	14.52%	-1.58%	-15.99%
ONGC	241.75	1.73	0.72%	61.57	148.64	345.00	29.93%	205.00	17.93%	-1.16%	-27.62%
POWERGRID	293.60	1.70	0.58%	65.86	192.62	366.25	19.84%	247.30	18.72%	-2.46%	-15.19%
RELIANCE	1416.60	29.00	2.09%	107.13	1502.91	1551.00	8.67%	1114.85	27.07%	-8.43%	-54.02%
SBILIFE	1833.20	-17.30	-0.93%	5.85	107.27	1936.00	5.31%	1372.55	33.56%	-0.01%	5.69%
SBIN	798.85	1.70	0.21%	78.33	624.47	889.10	10.15%	680.00	17.48%	-1.02%	-7.57%
SHRIRAMFIN	639.00	5.55	0.88%	68.59	436.93	730.45	12.52%	493.35	29.52%	-9.50%	-78.34%
SUNPHARMA	1717.80	15.60	0.92%	13.26	226.78	1960.35	12.37%	1553.05	10.61%	0.87%	-0.70%
TATACONSUM	1061.60	1.70	0.16%	9.45	100.40	1234.30	13.99%	882.90	20.24%	-5.73%	-12.67%
TATAMOTORS	691.75	8.85	1.30%	62.40	429.61	1179.00	41.33%	535.75	29.12%	-0.58%	-38.93%
TATASTEEL	162.22	2.54	1.59%	152.62	245.37	170.18	4.68%	122.62	32.29%	-1.10%	-1.77%
TCS	3057.00	-22.30	-0.72%	47.85	1462.38	4592.25	33.43%	3041.20	0.52%	-10.51%	-29.82%
TECHM	1458.00	7.40	0.51%	14.59	211.42	1807.70	19.35%	1209.40	20.56%	-13.37%	-5.88%
TITAN	3380.00	-13.00	-0.38%	5.11	172.48	3867.00	12.59%	2925.00	15.56%	-7.45%	-2.89%
TRENT	5004.00	10.00	0.20%	12.85	643.00	8345.00	40.04%	4488.00	11.50%	-17.04%	-7.40%
ULTRACEMCO	12230.00	-10.00	-0.08%	2.08	254.53	12714.00	3.81%	10047.85	21.72%	0.22%	4.86%
WIPRO	251.35	1.30	0.52%	129.23	323.42	324.60	22.57%	228.00	10.24%	-5.66%	-52.35%
ETERNAL	306.40	-0.90	-0.29%	235.21	714.89	314.45	2.56%	194.80	57.29%	17.35%	#VALUE!

Disclaimer / Disclosures

ANALYST CERTIFICATION

I, Mrs. Vaishali Parekh B.com, Research Analyst, author and the name subscribed to this report, hereby certify that all of the views expressed in this research report accurately reflect our views about the subject issuer(s) or securities. We also certify that no part of our compensation was, is, or will be directly or indirectly related to the specific recommendation(s) or view(s) in this report.

Terms & conditions and other disclosures:

Prabhudas Lilladher Pvt. Ltd, Mumbai, India (hereinafter referred to as "PL") is engaged in the business of Stock Broking, Portfolio Manager, Depository Participant and distribution for third party financial products. PL is a subsidiary of Prabhudas Lilladher Advisory Services Pvt Ltd. which has its various subsidiaries engaged in business of commodity broking, investment banking, financial services (margin funding) and distribution of third party financial/other products, details in respect of which are available at www.plindia.com

This document has been prepared by the Research Division of PL and is meant for use by the recipient only as information and is not for circulation. This document is not to be reported or copied or made available to others without prior permission of PL. It should not be considered or taken as an offer to sell or a solicitation to buy or sell any security.

The information contained in this report has been obtained from sources that are considered to be reliable. However, PL has not independently verified the accuracy or completeness of the same. Neither PL nor any of its affiliates, its directors or its employees accepts any responsibility of whatsoever nature for the information, statements and opinion given, made available or expressed herein or for any omission therein.

Recipients of this report should be aware that past performance is not necessarily a guide to future performance and value of investments can go down as well. The suitability or otherwise of any investments will depend upon the recipient's particular circumstances and, in case of doubt, advice should be sought from an independent expert/advisor.

Either PL or its affiliates or its directors or its employees or its representatives or its clients or their relatives may have position(s), make market, act as principal or engage in transactions of securities of companies referred to in this report and they may have used the research material prior to publication.

PL may from time to time solicit or perform investment banking or other services for any company mentioned in this document.

PL is registered as Research Analyst under Securities and Exchange Board of India (Research Analysts) Regulations, 2014 PL submits that no material disciplinary action has been taken on us by any Regulatory Authority impacting Equity Research Analysis activities.

PL or its research analysts or its associates or his relatives do not have any financial interest in the subject company.

PL or its research analysts or its associates or his relatives do not have actual/beneficial ownership of one per cent or more securities of the subject company at the end of the month immediately preceding the date of publication of the research report.

PL or its research analysts or its associates or his relatives do not have any material conflict of interest at the time of publication of the research report.

PL or its associates might have received compensation from the subject company in the past twelve months.

PL or its associates might have managed or co-managed public offering of securities for the subject company in the past twelve months or mandated by the subject company for any other assignment in the past twelve months.

PL or its associates might have received any compensation for investment banking or merchant banking or brokerage services from the subject company in the past twelve months.

PL or its associates might have received any compensation for products or services other than investment banking or merchant banking or brokerage services from the subject company in the past twelve months PL or its associates might have received any compensation or other benefits from the subject company or third party in connection with the research report.

PL encourages independence in research report preparation and strives to minimize conflict in preparation of research report. PL or its analysts did not receive any compensation or other benefits from the subject Company or third party in connection with the preparation of the research report. PL or its Research Analysts do not have any material conflict of interest at the time of publication of this report.

It is confirmed that Mrs.Vaishali Parekh B.com, Research Analyst of this report has not received any compensation from the companies mentioned in the report in the preceding twelve months compensation of our Research Analysts is not based on any specific merchant banking, investment banking or brokerage service transactions.

The Research analysts for this report certifies that all of the views expressed in this report accurately reflect his or her personal views about the subject company or companies and its or their securities, and no part of his or her compensation was, is or will be, directly or indirectly related to specific recommendations or views expressed in this report.

The research analysts for this report has not served as an officer, director or employee of the subject company PL or its research analysts have not engaged in market making activity for the subject company

Our sales people, traders, and other professionals or affiliates may provide oral or written market commentary or trading strategies to our clients that reflect opinions that are contrary to the opinions expressed herein, and our proprietary trading and investing businesses may make investment decisions that are inconsistent with the recommendations expressed herein. In reviewing these materials, you should be aware that any or all of the foregoing, among other things, may give rise to real or potential conflicts of interest.

PL and its associates, their directors and employees may (a) from time to time, have a long or short position in, and buy or sell the securities of the subject company or (b) be engaged in any other transaction involving such securities and earn brokerage or other compensation or act as a market maker in the financial instruments of the subject company or act as an advisor or lender/borrower to the subject company or may have any other potential conflict of interests with respect to any recommendation and other related information and opinions.