

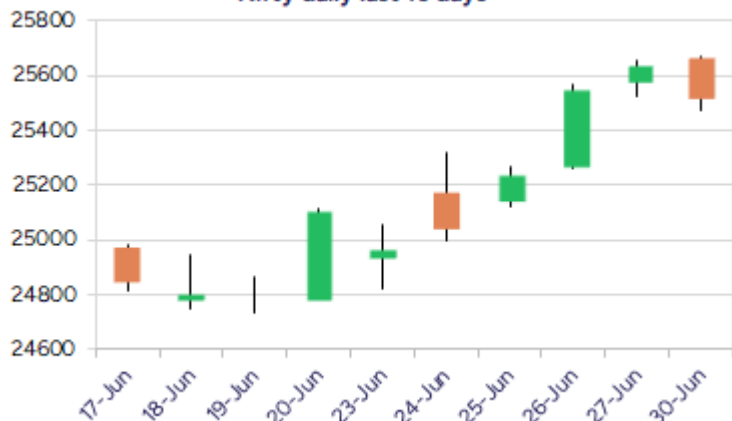
Date: 01st July 2025

* Sensex 83606.46 - 452.44

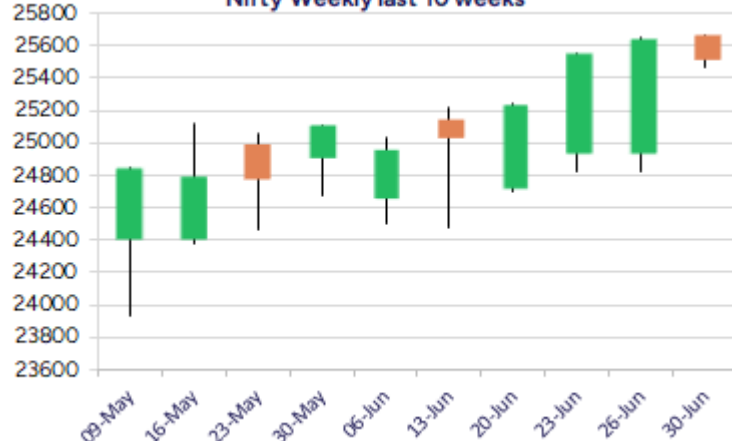
* Nifty 25517.05 - 120.75

* Bank Nifty 57312.75 - 131.15

Nifty daily last 10 days



Nifty Weekly last 10 weeks



*Blue candle → Close rate > Open rate * Red candle → Close rate < Open rate

Market Preview

Nifty takes a breather near 25650 zone

Nifty found resistance near the 25650 zone in the morning session and witnessed some profit booking to end the day near 25500 level with bias maintained positive. BankNifty failed to move past the 57600 zone and witnessed a gradual slide to end near the 57300 zone with bias maintained intact. The market breadth was strong with the advance decline indicating a ratio of 3:2 at close.

Market Forecast

Nifty daily range 25400-25700

Nifty index witnessed a halt resisting near the 25650 zone in the morning session and thereafter witnessed a gradual slide as the day progressed to end near the 25500 zone with overall bias and sentiment maintained strong expecting for further rise in the coming days. As mentioned earlier, the index would have the near-term support positioned near 25250-25300 zone and on the upside, with the undertone maintained strong, the scope for higher targets of 25700 and 26200 levels is achievable, with bias and sentiment better placed.

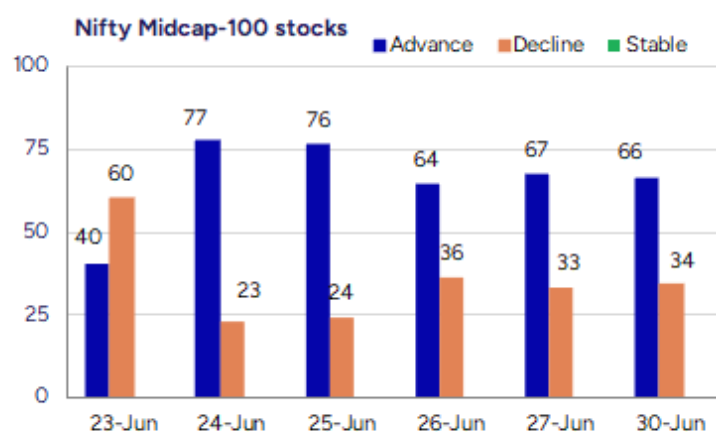
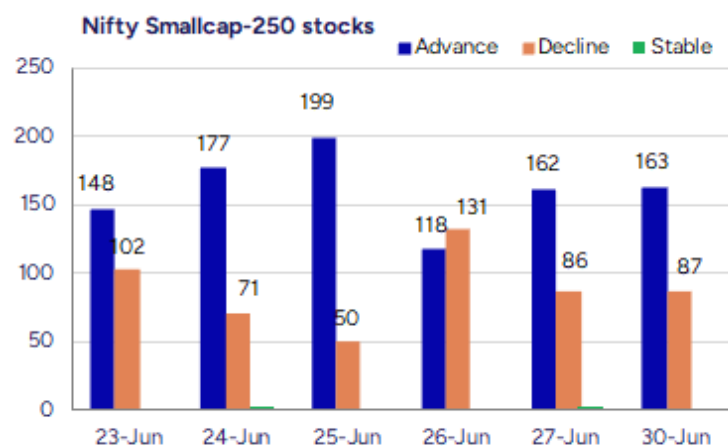
BankNifty took a breather near the 57600 zone, after the strong pick up witnessed in the previous session and ended the day near the 57300 level with overall bias maintained positive. The index continue with to have the important support near 56000 zone which needs to be sustained and, on the upside, with the bias improving can expect for fresh targets of 58500 and 60000 levels in the coming days.

The support for the day is seen at 25400 levels while the resistance is seen at 25700 levels. BankNifty would have the daily range of 57000-57800 levels.

Indices	Period	Closing	% Chng	Trend	Reversal	2 Sup	1 Sup	Pivot	1 Res	2 Res
Nifty	Daily	25517.05	-0.47%	7	25438.35	25357	25437	25553	25633	25749
	Weekly	25637.80	2.09%	2	25312.05	24545	25091	25372	25919	26199
	Monthly	25517.05	3.10%	2	25312.05	24028	24772	25217	25962	26407
Bank Nifty	Daily	57312.75	-0.23%	7	57061.15	56953	57133	57374	57554	57794
	Weekly	57443.90	2.12%	1	56982.40	55211	56327	56900	58017	58589
	Monthly	57312.75	2.80%	3	54910.25	54237	55775	56687	58226	59138
Sensex	Daily	83606.46	-0.54%	7	83360.10	83112	83359	83729	83977	84347
	Weekly	84058.90	2.00%	2	83079.45	80602	82330	83209	84938	85817
	Monthly	83606.46	2.65%	2	81262.65	79027	81317	82703	84992	86378

Gainers - Losers (Nifty 500 Stocks)

Gainers				Losers			
Company Name	Last Price	% Gain	Volume	Company Name	Last Price	% Loss	Volume
Shemaroo Ent	152.2	19.99	731087	Mirc Electronic	14.84	-12.55	2137950
Tamil Telecom	13.22	19.96	786766	Sigachi Ind	48.76	-11.54	31893796
Euro India Fres	258.61	19.35	388812	Rajoo Engineers	109.18	-9.63	1620097
Atmastco	223.3	17.87	445600	Arabian Petrole	81.5	-9.39	18000
Premium Plast	43.3	17.03	6000	Orbit Exports	213.78	-7.03	113098
Accent Micro	266	15.85	266000	Beardsell	26.99	-6.96	372563
Raymond	709.4	13.62	17935738	JB Chemicals	1679.3	-6.78	1260647



Nifty Daily chart with RSI indicator



BankNifty Daily chart with RSI indicator



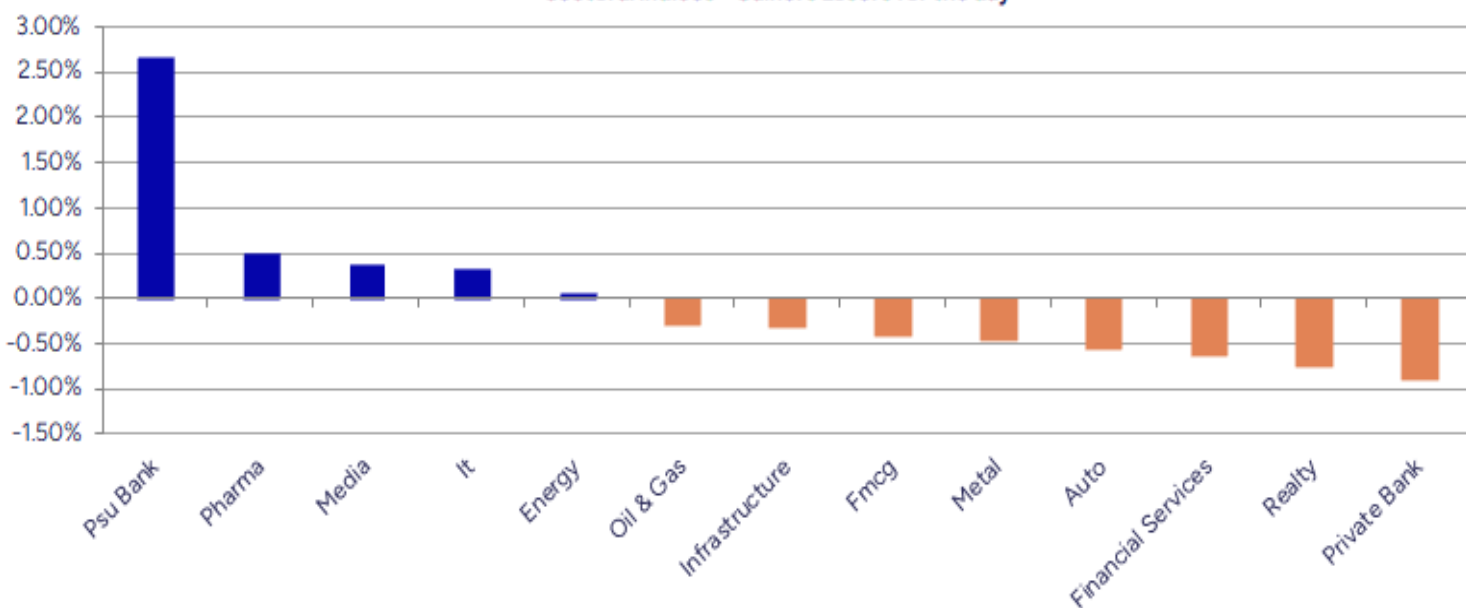
Breakouts - Cross above 200 DMA			
Company Name	LCP	Change %	200 DMA
Bhageria Indu	209.38	10.08	190.2
Shemaroo Ent	152.2	9.28	139.28
Accent Micro	266	8.62	244.88
Satin Credit	169.67	5.97	160.11
Bharat Rasayan	11020.5	4.88	10508.11
Tirupati Forge	44.43	4.62	42.47
Alembic Pharma	1039.1	4.46	994.76
BLACK BOX	524	4.22	502.78
Baazar Style Re	312.55	4.05	300.37
Kavveri Defence	50.75	3.95	48.82
KDDL	2886.6	3.75	2782.3
Avonmore Cap	19.67	3.53	19
New India Assur	192.48	3.30	186.33
Lloyds Steels	70.99	3.15	68.82
DB Corp	284.65	2.95	276.5
Pil Italica	15.17	2.71	14.77
SATIA	92.47	2.57	90.15
Dolphin Offshor	448.75	2.30	438.67

* Stocks crossing above its Simple Moving Average (200DMA)

Breakdown - Cross below 200 DMA			
Company Name	LCP	Change %	200 DMA
JB Chemicals	1679.3	-3.23	1735.37
Karnataka Bank	195.67	-2.73	201.16
Anjani Portland	144.96	-2.11	148.08
Dalmia Sugar	404.8	-1.25	409.92
Texmaco Rail	176.04	-1.14	178.07
Trejhara	236.13	-0.89	238.26
Indian Hotels	760.3	-0.73	765.89
Campus	279.5	-0.57	281.09
Sharda Motor	1879.6	-0.55	1889.99
Oswal ChemandFe	45.69	-0.50	45.92
Somany Ceramics	562.4	-0.47	565.08
Rachana Infra	41.2	-0.27	41.31
Websol Energy	1306.3	-0.07	1307.2
STC India	144.6	-0.07	144.7
Jamna Auto	94.71	-0.06	94.77
Seshasayee Pape	297.1	-0.05	297.24
GAIL	190.84	-0.02	190.88

* Stocks crossing below its Simple Moving Average (200DMA)

Sectoral Indices - Gainers Losers for the day



Stocks witnessing a volume surge as compared to their 5 day average volume

Watch out for the stocks that have seen a huge spurt in its share price over the last three days

Volume Shockers - NSE					
Company name	LCP	% Chg	Volume	Avg Vol *	% Chg
Diamond Power	138.23	6.8	20899740	6800	307231
Jindal Worldwid	53.89	-3.35	30241774	138074	21803
Remsons Ind	137.56	-6.55	4092565	21094	19301
Signpost India	213.25	9.87	6917731	85428	7998
Tamil Telecom	13.22	19.96	786766	10569	7344
Alembic Pharma	1039.1	7.25	15274048	233892	6430
Jai Balaji Ind	130.25	-3.22	3323989	54390	6011
Hb Stockhol	115.72	0.93	623291	10914	5611
Jyoti CNC Auto	1059	-5.92	18189945	404144	4401
Balaxi Pharma	50.02	-0.06	1497105	38449	3794
KCK Industries	43.05	5.64	520000	13600	3724
Prime Focus	138.83	1.46	5615125	152269	3588
Sky Gold	314.1	-2.92	840404	25989	3134
Sunrest	50.45	-2.98	70400	2240	3043
Marathon Realty	652.6	1.98	1566423	50063	3029
Raymond	709.4	13.62	17935738	587498	2953
Sigachi Ind	48.76	-11.54	31893796	1046438	2948
Thomas Scott	383.15	-5	117880	4062	2802
Rattan Power	15.52	7.85	431927666	1.6E+07	2603
Digjam	34.47	5	67839	2744	2372

* the Average Volume of last 5 days

Price Shockers - NSE				
Company name	LCP	Prv Close	% Chg	Volume
Shemaroo Ent	152.2	118.18	28.79	731087
Hb Stockhol	115.72	91.47	26.51	623291
Prime Focus	138.83	113.47	22.35	5615125
Hubtown	269.04	220.87	21.81	2475314
Almondz Global	25.4	20.92	21.41	2757758
ABM Inter	70.95	58.52	21.24	1742
Orbit Exports	213.78	178.64	19.67	113098
Euro India Fres	258.61	216.6	19.4	388812
Ndr Auto Compon	1154.15	969.5	19.05	368640
Steel Exchange	10.13	8.53	18.76	10786008
Diamond Power	138.23	116.62	18.53	20899740
Raymond	709.4	600.45	18.14	17935738
Indraprastha	485.35	412.65	17.62	4247038
Rajdarshan Ind	54.7	46.88	16.68	32918
Sanstar	104.89	90.05	16.48	3042721
Force Motors	16077	13887	15.77	335281
Nacl Industries	218.37	188.65	15.75	622132
Sri Adhikari	963.7	832.55	15.75	7044
SEMAC CONSULT	491.7	424.8	15.75	2379
Dolphin Offshor	448.75	387.7	15.75	18121

* the % price rise of the last 3 days

Nifty 50 stocks - Summary Details											
Symbol	LTP	Chng	% Chng	Volume (lacs)	Turnover (crs.)	52w High	Diff with 52w H	52w Low	Diff with 52w L	365 days % chng	30 days % chng
NIFTY 50	25517.05	-120.75	-0.47%	2709.42	24671.45	26277.35	2.89%	21743.65	17.35%	3.58%	6.78%
ADANIENT	2624.80	-21.50	-0.81%	6.95	182.26	3258.00	19.44%	2025.00	29.62%	5.02%	-16.71%
ADANIPTS	1444.10	3.90	0.27%	15.86	229.32	1604.95	10.02%	995.65	45.04%	0.52%	-2.56%
APOLLOHOSP	7238.00	-70.50	-0.96%	3.54	256.34	7545.35	4.07%	6001.00	20.61%	6.22%	18.15%
ASIANPAINT	2341.90	-16.80	-0.71%	7.85	183.86	3394.90	31.02%	2124.75	10.22%	4.41%	-19.14%
AXISBANK	1199.00	-26.10	-2.13%	65.59	791.20	1339.65	10.50%	933.50	28.44%	2.76%	-3.17%
BAJAJ-AUTO	8370.00	-66.00	-0.78%	3.04	255.87	12774.00	34.48%	7089.35	18.06%	-1.99%	-11.22%
BAJAJFINSV	2055.10	11.10	0.54%	13.64	279.32	2135.00	3.74%	1523.25	34.92%	1.32%	28.70%
BAJFINANCE	937.00	-10.00	-1.06%	60.85	572.35	978.80	4.27%	642.50	45.84%	-89.68%	-86.69%
BEL	422.80	8.30	2.00%	203.49	852.87	426.50	0.87%	240.25	75.98%	7.77%	35.50%
BHARTIARTL	2008.70	-18.40	-0.91%	55.97	1124.70	2039.00	1.49%	1408.45	42.62%	9.21%	40.38%
CIPLA	1503.10	0.70	0.05%	10.54	158.70	1702.05	11.69%	1335.00	12.59%	2.50%	1.46%
COALINDIA	391.90	-2.25	-0.57%	48.63	191.02	543.55	27.90%	349.25	12.21%	-0.79%	-16.70%
DRREDDY	1286.30	-14.70	-1.13%	22.24	285.10	1421.49	9.51%	1020.00	26.11%	3.98%	-79.68%
EICHERMOT	5640.00	-20.00	-0.35%	3.40	192.04	5906.50	4.51%	4508.75	25.09%	6.12%	21.12%
GRASIM	2841.00	-20.10	-0.70%	4.48	127.82	2896.00	1.90%	2276.95	24.77%	12.39%	7.14%
HCLTECH	1732.00	8.70	0.50%	18.55	320.18	2012.20	13.93%	1302.75	32.95%	5.30%	18.07%
HDFCBANK	2000.00	-14.90	-0.74%	68.24	1365.61	2027.10	1.34%	1588.05	25.94%	3.60%	19.66%
HDFCLIFE	812.70	5.75	0.71%	29.71	241.71	820.75	0.98%	584.30	39.09%	3.87%	35.61%
HEROMOTOCO	4235.60	-84.70	-1.96%	8.71	369.85	6246.25	32.19%	3344.00	26.66%	0.26%	-22.57%
HINDALCO	692.85	-4.50	-0.65%	49.19	341.18	772.65	10.33%	546.45	26.79%	10.08%	0.55%
HINDUNILVR	2295.90	-11.00	-0.48%	14.04	322.79	3035.00	24.35%	2136.00	7.49%	-1.76%	-6.72%
ICICIBANK	1449.00	-13.20	-0.90%	63.25	917.11	1471.60	1.54%	1153.00	25.67%	1.13%	21.89%
INDUSINDBK	873.00	15.30	1.78%	43.53	377.98	1504.95	41.99%	606.00	44.06%	4.99%	-41.43%
INFY	1603.40	-4.60	-0.29%	62.94	1009.19	2006.45	20.09%	1307.00	22.68%	2.90%	2.63%
ITC	416.30	-2.35	-0.56%	123.15	513.97	528.50	21.23%	390.15	6.70%	0.14%	-1.47%
JIOFIN	327.40	3.95	1.22%	367.42	1204.08	363.00	9.81%	198.65	64.81%	12.84%	-9.69%
JSWSTEEL	1018.55	-10.35	-1.01%	7.66	78.19	1074.90	5.24%	854.15	19.25%	3.56%	10.46%
KOTAKBANK	2160.00	-47.90	-2.17%	37.27	809.83	2301.90	6.16%	1679.05	28.64%	6.42%	22.49%
LT	3671.00	-8.20	-0.22%	15.09	555.38	3963.50	7.38%	2965.30	23.80%	0.11%	3.68%
M&M	3178.80	-24.50	-0.76%	20.84	663.48	3270.95	2.82%	2425.00	31.08%	7.61%	11.74%
MARUTI	12406.00	-236.00	-1.87%	4.49	559.16	13680.00	9.31%	10725.00	15.67%	2.62%	5.05%
NESTLEIND	2462.00	3.30	0.13%	8.29	203.95	2778.00	11.38%	2110.00	16.68%	2.61%	-3.64%
NTPC	334.80	-3.50	-1.03%	118.57	397.03	448.45	25.34%	292.80	14.34%	1.32%	-10.59%
ONGC	244.00	1.17	0.48%	87.82	214.28	345.00	29.28%	205.00	19.02%	1.43%	-11.44%
POWERGRID	299.15	-0.10	-0.03%	84.15	251.58	366.25	18.32%	247.30	20.97%	3.28%	-9.58%
RELIANCE	1499.90	-15.50	-1.02%	84.09	1269.14	1608.80	6.77%	1114.85	34.54%	6.65%	-51.60%
SBILIFE	1833.90	-16.70	-0.90%	13.62	250.85	1936.00	5.27%	1372.55	33.61%	2.12%	24.04%
SBIN	819.85	14.45	1.79%	196.52	1604.86	899.00	8.80%	680.00	20.57%	-0.85%	-5.13%
SHRIRAMFIN	707.25	7.30	1.04%	37.21	263.37	730.45	3.18%	493.35	43.36%	9.48%	-75.96%
SUNPHARMA	1675.00	-12.60	-0.75%	21.60	363.82	1960.35	14.56%	1498.30	11.79%	0.60%	10.96%
TATACONSUM	1098.00	-26.30	-2.34%	18.36	201.78	1250.10	12.17%	882.90	24.36%	1.63%	2.45%
TATAMOTORS	688.30	1.40	0.20%	69.59	479.16	1179.00	41.62%	535.75	28.47%	-4.53%	-30.60%
TATASTEEL	159.80	-1.65	-1.02%	158.35	254.33	178.19	10.32%	122.62	30.32%	0.27%	-7.22%
TCS	3460.00	18.90	0.55%	14.68	506.86	4592.25	24.66%	3056.05	13.22%	-0.64%	-11.86%
TECHM	1685.40	11.00	0.66%	15.47	259.52	1807.70	6.77%	1209.40	39.36%	6.39%	17.06%
TITAN	3688.00	21.80	0.59%	9.22	339.27	3867.00	4.63%	2925.00	26.09%	3.13%	7.70%
TRENT	6202.50	183.00	3.04%	21.36	1315.63	8345.00	25.67%	4488.00	38.20%	6.66%	9.85%
ULTRACEMCO	12085.00	-128.00	-1.05%	3.33	404.98	12339.00	2.06%	10047.85	20.27%	8.95%	4.67%
WIPRO	266.49	1.44	0.54%	71.18	188.63	324.60	17.90%	228.00	16.88%	6.16%	-48.52%
ETERNAL	263.95	2.09	0.80%	215.85	569.94	304.70	13.37%	194.56	35.67%	9.88%	#VALUE!

Disclaimer / Disclosures

ANALYST CERTIFICATION

I, Mrs. Vaishali Parekh B.com, Research Analyst, author and the name subscribed to this report, hereby certify that all of the views expressed in this research report accurately reflect our views about the subject issuer(s) or securities. We also certify that no part of our compensation was, is, or will be directly or indirectly related to the specific recommendation(s) or view(s) in this report.

Terms & conditions and other disclosures:

Prabhudas Lilladher Pvt. Ltd, Mumbai, India (hereinafter referred to as "PL") is engaged in the business of Stock Broking, Portfolio Manager, Depository Participant and distribution for third party financial products. PL is a subsidiary of Prabhudas Lilladher Advisory Services Pvt Ltd. which has its various subsidiaries engaged in business of commodity broking, investment banking, financial services (margin funding) and distribution of third party financial/other products, details in respect of which are available at www.plindia.com

This document has been prepared by the Research Division of PL and is meant for use by the recipient only as information and is not for circulation. This document is not to be reported or copied or made available to others without prior permission of PL. It should not be considered or taken as an offer to sell or a solicitation to buy or sell any security.

The information contained in this report has been obtained from sources that are considered to be reliable. However, PL has not independently verified the accuracy or completeness of the same. Neither PL nor any of its affiliates, its directors or its employees accepts any responsibility of whatsoever nature for the information, statements and opinion given, made available or expressed herein or for any omission therein.

Recipients of this report should be aware that past performance is not necessarily a guide to future performance and value of investments can go down as well. The suitability or otherwise of any investments will depend upon the recipient's particular circumstances and, in case of doubt, advice should be sought from an independent expert/advisor.

Either PL or its affiliates or its directors or its employees or its representatives or its clients or their relatives may have position(s), make market, act as principal or engage in transactions of securities of companies referred to in this report and they may have used the research material prior to publication.

PL may from time to time solicit or perform investment banking or other services for any company mentioned in this document.

PL is registered as Research Analyst under Securities and Exchange Board of India (Research Analysts) Regulations, 2014 PL submits that no material disciplinary action has been taken on us by any Regulatory Authority impacting Equity Research Analysis activities.

PL or its research analysts or its associates or his relatives do not have any financial interest in the subject company.

PL or its research analysts or its associates or his relatives do not have actual/beneficial ownership of one per cent or more securities of the subject company at the end of the month immediately preceding the date of publication of the research report.

PL or its research analysts or its associates or his relatives do not have any material conflict of interest at the time of publication of the research report.

PL or its associates might have received compensation from the subject company in the past twelve months.

PL or its associates might have managed or co-managed public offering of securities for the subject company in the past twelve months or mandated by the subject company for any other assignment in the past twelve months.

PL or its associates might have received any compensation for investment banking or merchant banking or brokerage services from the subject company in the past twelve months.

PL or its associates might have received any compensation for products or services other than investment banking or merchant banking or brokerage services from the subject company in the past twelve months PL or its associates might have received any compensation or other benefits from the subject company or third party in connection with the research report.

PL encourages independence in research report preparation and strives to minimize conflict in preparation of research report. PL or its analysts did not receive any compensation or other benefits from the subject Company or third party in connection with the preparation of the research report. PL or its Research Analysts do not have any material conflict of interest at the time of publication of this report.

It is confirmed that Mrs.Vaishali Parekh B.com, Research Analyst of this report has not received any compensation from the companies mentioned in the report in the preceding twelve months compensation of our Research Analysts is not based on any specific merchant banking, investment banking or brokerage service transactions.

The Research analysts for this report certifies that all of the views expressed in this report accurately reflect his or her personal views about the subject company or companies and its or their securities, and no part of his or her compensation was, is or will be, directly or indirectly related to specific recommendations or views expressed in this report.

The research analysts for this report has not served as an officer, director or employee of the subject company PL or its research analysts have not engaged in market making activity for the subject company

Our sales people, traders, and other professionals or affiliates may provide oral or written market commentary or trading strategies to our clients that reflect opinions that are contrary to the opinions expressed herein, and our proprietary trading and investing businesses may make investment decisions that are inconsistent with the recommendations expressed herein. In reviewing these materials, you should be aware that any or all of the foregoing, among other things, may give rise to real or potential conflicts of interest.

PL and its associates, their directors and employees may (a) from time to time, have a long or short position in, and buy or sell the securities of the subject company or (b) be engaged in any other transaction involving such securities and earn brokerage or other compensation or act as a market maker in the financial instruments of the subject company or act as an advisor or lender/borrower to the subject company or may have any other potential conflict of interests with respect to any recommendation and other related information and opinions.