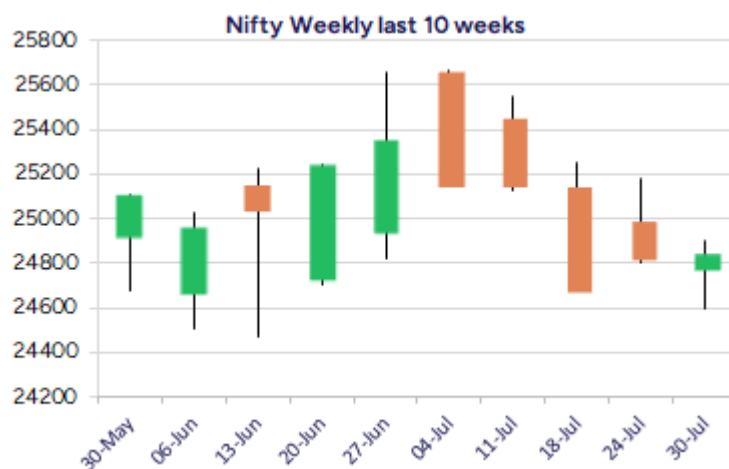
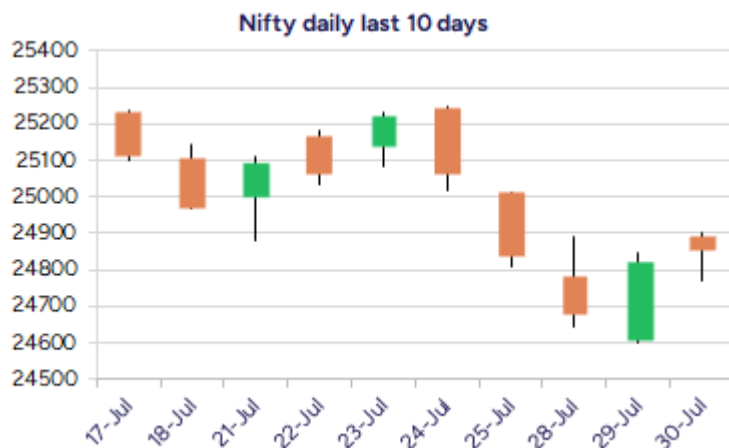


Date: 31st July 2025

* Sensex 81481.86 + 143.91

* Nifty 24855.05 + 33.95

* Bank Nifty 56150.70 - 71.30



*Blue candle → Close rate > Open rate * Red candle → Close rate < Open rate

Market Preview

Nifty ends flat; 24800 crucial zone

Nifty witnessed a flat session with narrow rangebound movement sustaining above the 24800 zone with bias and sentiment precariously placed. BankNifty had a sluggish session maintaining above the important 56000 zone and needs to check for further development which shall decide the further move of the index in the coming sessions. The market breadth was overall flat with the advance decline indicating a neutral ratio at close.

Market Forecast

Nifty daily range 24700-25000

Nifty witnessed a sluggish session with a rangebound movement for most part of the session finding resistance near the important 50EMA zone at 24900 level and would need a decisive breach above 25000 zone to improve the bias and expect for further rise. On the downside, the index has got the crucial support at 24500 level which needs to be sustained to maintain the overall trend intact, as mentioned earlier.

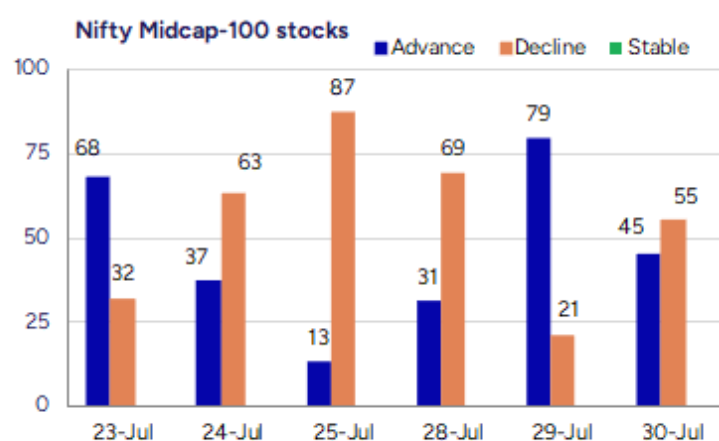
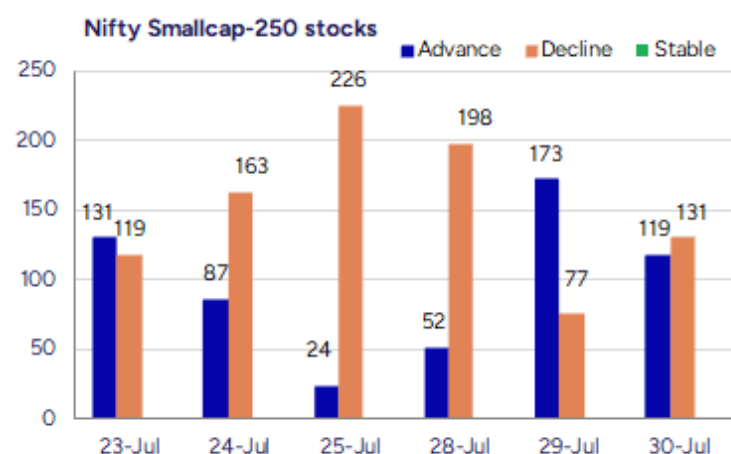
BankNifty, witnessed a narrow rangebound session with 56000 level sustained as the important support and is awaiting the Fed outcome to trigger for further fresh directional move in the coming days. As said earlier, the index needs to have a decent revival to break past the important hurdle at 57400 zone to trigger for fresh upward move in the coming days whereas 50EMA level near 56000 zone continue to act as the important support zone which needs to be sustained to maintain the bias intact.

The support for the day is seen at 24700 levels while the resistance is seen at 25000 levels. BankNifty would have the daily range of 55700-56800 levels.

Indices	Period	Closing	% Chng	Trend	Reversal	2 Sup	1 Sup	Pivot	1 Res	2 Res
Nifty	Daily	24855.05	0.14%	-5	24879.55	24713	24784	24843	24914	24973
	Weekly	24837.00	-1.24%	-3	25322.55	24529	24683	24963	25117	25397
	Monthly	25517.05	3.10%	2	25312.05	24028	24772	25217	25962	26407
Bank Nifty	Daily	56150.70	-0.13%	-4	56510.75	55922	56036	56179	56293	56435
	Weekly	56528.90	-0.40%	-3	57019.65	55644	56086	56702	57144	57759
	Monthly	57312.75	2.80%	3	54910.25	54237	55775	56687	58226	59138
Sensex	Daily	81481.86	0.18%	-5	81566.00	80997	81240	81429	81672	81861
	Weekly	81463.09	-1.26%	-3	82942.70	80495	80979	81882	82366	83269
	Monthly	83606.46	2.65%	2	81262.65	79027	81317	82703	84992	86378

Gainers - Losers (Nifty 500 Stocks)

Gainers				Losers			
Company Name	Last Price	% Gain	Volume	Company Name	Last Price	% Loss	Volume
Plada Infotech	20.4	20	42000	Times Guaranty	257.33	-10	329292
Arihant Academy	335.95	19.98	128400	Birla Corp	1384.7	-8.47	1260111
Omax Autos	151.96	17.87	4874107	Excellent Wire	50.2	-7.81	1600
Bliss GVS	183.17	17.78	18619445	Redington	265.45	-7.8	5887463
New India Assur	204.35	17.77	82686208	Vimta Labs	656.25	-7.61	7598157
Moving Media	82.9	17.76	598000	Pennar Inds	234.32	-7.53	1594772
Zuari Agro Chem	287.94	16.1	16999048	DC Infotech	219.2	-6.68	35237



Nifty Daily chart with RSI indicator



BankNifty Daily chart with RSI indicator

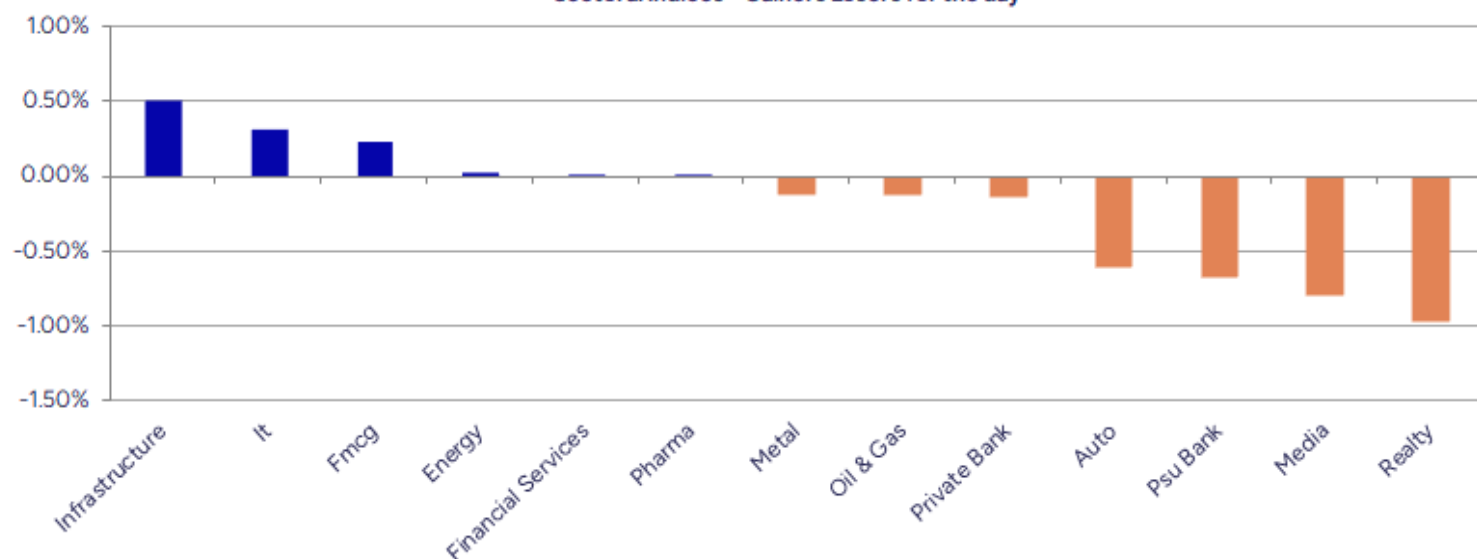


Breakouts - Cross above 200 DMA				Breakdown - Cross below 200 DMA			
Company Name	LCP	Change %	200 DMA	Company Name	LCP	Change %	200 DMA
New India Assur	204.35	12.86	181.06	Nilkamal	1691.2	-3.77	1757.47
Chemcon Special	230.72	8.93	211.8	Wonder Elect.	160.72	-2.78	165.32
Vision Infra	172.75	5.46	163.8	Andhra Cement	68.16	-2.67	70.03
Madras Fert	94.46	5.27	89.73	Max Estates	486.15	-2.66	499.44
RPG Life	2405.8	5.08	2289.4	Motherson SWI	37.77	-2.58	38.77
Wanbury	264.85	4.69	252.98	Coral India Fin	44.82	-2.40	45.92
Larsen	3665.1	4.68	3501.28	Airo Lam	109.07	-2.28	111.61
Premier	3.8	3.83	3.66	S P Apparels	813.8	-2.25	832.52
Yatra Online	99.28	3.63	95.8	IZMO	376.15	-2.15	384.42
Zuari Ind.	302.85	3.07	293.82	Panacea Biotec	412.3	-2.08	421.06
Medi Assist Hea	546	2.41	533.14	ITI	293.95	-1.88	299.58
Madhav Copper	51.55	2.38	50.35	Ajmera Realty	897.6	-1.85	914.49
Gufic Bio	404.55	2.37	395.19	Electrotherm	1003.4	-1.70	1020.78
Star Health	447.8	2.22	438.06	Murudeshwar Cer	42.57	-1.69	43.3
Hindustan Media	89.33	2.18	87.42	Rajdarshan Ind	47.77	-1.61	48.55
GPT Infra	130.43	2.03	127.83	MOTHERSON	98.92	-1.53	100.46
Rashtriya Chem	155.27	1.63	152.78	Damodar Ind	37.33	-1.09	37.74
Nila Infra	11.69	1.56	11.51	GHCL Textiles	89.9	-0.74	90.57

* Stocks crossing above its Simple Moving Average (200DMA)

* Stocks crossing below its Simple Moving Average (200DMA)

Sectoral Indices - Gainers Losers for the day



Stocks witnessing a volume surge as compared to their 5 day average volume

Watch out for the stocks that have seen a huge spurt in its share price over the last three days

Volume Shockers - NSE					
Company name	LCP	% Chg	Volume	Avg Vol *	% Chg
New India Assur	204.35	17.77	82686208	271996	30300
Arihant Academy	335.95	19.98	128400	1520	8347
Ashoka Metcast	18.58	10.27	1215063	15915	7535
Vishnu Chemical	564.35	9.36	5370629	77429	6836
Bliss GVS	183.17	17.78	18619445	307941	5946
Foseco India	5486.9	13.63	129767	2160	5907
Zuari Agro Chem	287.94	16.1	16999048	358320	4644
Ruby Mills	250.95	8.21	282938	12275	2205
Chemcon Special	230.72	9.51	736548	36209	1934
BEW Engineering	156.75	-0.82	19500	1125	1633
Tega Industries	1901.5	1.65	420416	24591	1610
R M Drip & Spri	663.15	7.16	165399	9800	1588
Shivalik Rasa	612.9	6.63	420507	24914	1588
Creative New	658	1.65	134104	8363	1504
Commercial Syn	134.49	0.21	1461472	93931	1456
Krishival Foods	384.8	-1.96	17611	1200	1368
Gateway Distri	71.29	4.41	31291058	2178816	1336
Hitachi Energy	20825	5.23	314006	21966	1330
KCK Industries	43	-0.58	182500	13600	1242
Zuari Ind.	302.85	3.88	684151	51187	1237

* the Average Volume of last 5 days

Price Shockers - NSE				
Company name	LCP	Prv Close	% Chg	Volume
Hind Rectifiers	1951.3	1349.8	44.56	3104997
Zuari Agro Chem	287.94	213.57	34.82	16999048
Omax Autos	151.96	121.13	25.45	4874107
Jayaswal Neco	50.82	42.06	20.83	201122973
Happy Square	84.75	70.2	20.73	70400
Gallantt Ispat	766.2	635.05	20.65	3543292
Bliss GVS	183.17	153.61	19.24	18619445
Pearl Polymers	37.25	31.55	18.07	1387555
Abha Power	41.35	35.1	17.81	43200
Times Guaranty	257.33	220.88	16.5	329292
Sri Adhikari	937.5	809.95	15.75	614
Blue Coast	45.8	39.58	15.72	399
Ortin Global	14.16	12.24	15.69	5656
United Polyfab	29.03	25.11	15.61	1081903
ASL Industries	50.75	43.9	15.6	38000
Thinking Hats	33.15	28.7	15.51	18000
Delta Autocorp	81.9	70.95	15.43	49000
Emerald Tyre	140.3	122.4	14.62	156000
Zuari Ind.	302.85	265.1	14.24	684151
IFB Agro	918.95	804.5	14.23	46664

* the % price rise of the last 3 days

Nifty 50 stocks - Summary Details											
Symbol	LTP	Chng	% Chng	Volume (lacs)	Turnover (crs.)	52w High	Diff with 52w H	52w Low	Diff with 52w L	365 days % chng	30 days % chng
NIFTY 50	24855.05	33.95	0.14%	2438.55	23523.68	26277.35	5.41%	21743.65	14.31%	-3.19%	-0.06%
ADANIENT	2527.00	-20.90	-0.82%	2.62	66.59	3258.00	22.44%	2025.00	24.79%	-3.72%	-17.53%
ADANIPTS	1395.00	-0.90	-0.06%	6.27	87.58	1604.95	13.08%	995.65	40.11%	-3.08%	-9.87%
APOLLOHOSP	7420.50	-35.50	-0.48%	2.67	198.64	7635.00	2.81%	6001.00	23.65%	2.02%	11.59%
ASIANPAINT	2411.00	9.50	0.40%	16.86	407.72	3394.90	28.98%	2124.75	13.47%	1.81%	-18.72%
AXISBANK	1073.50	9.30	0.87%	82.47	883.23	1281.65	16.24%	933.50	15.00%	-13.13%	-9.05%
BAJAJ-AUTO	8046.00	-81.50	-1.00%	2.23	179.76	12774.00	37.01%	7089.35	13.49%	-3.66%	-14.96%
BAJAJFINSV	1960.00	-12.60	-0.64%	9.33	182.85	2135.00	8.20%	1523.25	28.67%	-3.49%	21.98%
BAJFINANCE	884.00	-2.55	-0.29%	50.54	446.45	978.80	9.69%	642.50	37.59%	-6.38%	-86.99%
BEL	385.85	-2.40	-0.62%	113.35	439.67	436.00	11.50%	240.25	60.60%	-6.33%	20.82%
BHARTIARTL	1930.10	11.80	0.62%	50.45	974.20	2045.80	5.66%	1422.60	35.67%	-5.37%	29.50%
CIPLA	1558.20	-15.80	-1.00%	13.90	217.03	1702.05	8.45%	1335.00	16.72%	4.77%	1.29%
COALINDIA	380.05	-3.60	-0.94%	51.07	194.38	543.55	30.08%	349.25	8.82%	-2.66%	-25.09%
DRREDDY	1292.00	-7.80	-0.60%	13.87	178.55	1421.49	9.11%	1020.00	26.67%	-0.09%	-81.00%
EICHERMOT	5490.00	19.50	0.36%	2.66	146.40	5906.50	7.05%	4508.75	21.76%	-3.35%	10.24%
GRASIM	2759.00	16.00	0.58%	7.73	214.37	2896.00	4.73%	2276.95	21.17%	-4.13%	-3.01%
HCLTECH	1478.00	5.60	0.38%	16.42	242.19	2012.20	26.55%	1302.75	13.45%	-14.56%	-9.80%
HDFCBANK	2025.90	4.30	0.21%	75.77	1533.46	2037.70	0.58%	1593.30	27.15%	0.33%	25.95%
HDFCLIFE	755.50	-0.85	-0.11%	20.11	152.17	820.75	7.95%	584.30	29.30%	-6.27%	8.54%
HEROMOTOCO	4241.00	-84.20	-1.95%	5.47	232.66	6246.25	32.10%	3344.00	26.82%	0.11%	-20.26%
HINDALCO	689.05	-3.65	-0.53%	28.29	194.91	772.65	10.82%	546.45	26.10%	-0.67%	3.88%
HINDUNILVR	2433.90	-19.70	-0.80%	12.24	297.47	3035.00	19.81%	2136.00	13.95%	6.36%	-9.51%
ICICIBANK	1480.10	-6.10	-0.41%	72.39	1073.76	1500.00	1.33%	1153.00	28.37%	1.64%	22.55%
INDUSINDBK	801.95	-6.25	-0.77%	32.19	258.61	1498.00	46.47%	606.00	32.33%	-5.77%	-42.74%
INFY	1518.00	4.30	0.28%	57.19	866.44	2006.45	24.34%	1307.00	16.14%	-5.86%	-19.10%
ITC	407.80	-0.65	-0.16%	109.15	444.65	528.50	22.84%	390.15	4.52%	-2.44%	-17.66%
JIOFIN	320.00	-1.10	-0.34%	153.93	495.45	363.00	11.85%	198.65	61.09%	-0.73%	-2.76%
JSWSTEEL	1034.00	-0.90	-0.09%	17.81	185.30	1074.90	3.81%	854.15	21.06%	0.58%	15.17%
KOTAKBANK	1959.20	-13.50	-0.68%	35.90	705.78	2301.90	14.89%	1679.05	16.69%	-10.65%	9.97%
LT	3659.20	163.60	4.68%	87.61	3193.56	3963.50	7.68%	2965.30	23.40%	-4.99%	-7.40%
M&M	3225.00	25.60	0.80%	22.00	702.05	3303.00	2.36%	2425.00	32.99%	-0.12%	9.08%
MARUTI	12588.00	119.00	0.95%	2.04	256.25	13680.00	7.98%	10725.00	17.37%	-1.37%	-2.22%
NESTLEIND	2234.90	11.20	0.50%	4.65	103.65	2778.00	19.55%	2110.00	5.92%	-9.56%	-9.98%
NTPC	338.30	3.70	1.11%	125.37	424.82	448.45	24.56%	292.80	15.54%	-1.09%	-15.05%
ONGC	241.75	0.31	0.13%	87.66	212.13	345.00	29.93%	205.00	17.93%	-0.57%	-27.47%
POWERGRID	290.00	-3.10	-1.06%	105.16	306.81	366.25	20.82%	247.30	17.27%	-2.06%	-14.39%
RELIANCE	1409.70	-7.40	-0.52%	72.10	1017.63	1551.00	9.11%	1114.85	26.45%	-6.49%	-53.39%
SBILIFE	1850.00	16.60	0.91%	4.81	88.28	1936.00	4.44%	1372.55	34.79%	-0.93%	4.96%
SBIN	800.00	0.80	0.10%	87.43	700.10	889.10	10.02%	680.00	17.65%	-0.77%	-8.31%
SHRIRAMFIN	633.50	-4.85	-0.76%	60.25	381.14	730.45	13.27%	493.35	28.41%	-8.80%	-78.31%
SUNPHARMA	1736.30	25.80	1.51%	23.19	401.43	1960.35	11.43%	1553.05	11.80%	1.36%	-0.74%
TATACONSUM	1076.00	14.40	1.36%	11.76	126.44	1234.30	12.83%	882.90	21.87%	-5.58%	-11.64%
TATAMOTORS	668.00	-24.35	-3.52%	189.22	1266.65	1179.00	43.34%	535.75	24.69%	0.79%	-38.40%
TATASTEEL	161.30	-0.39	-0.24%	160.83	260.11	170.18	5.22%	122.62	31.54%	0.15%	-0.72%
TCS	3052.10	-3.90	-0.13%	28.80	880.85	4592.25	33.54%	3041.20	0.36%	-11.19%	-30.25%
TECHM	1463.50	9.70	0.67%	12.99	189.61	1807.70	19.04%	1209.40	21.01%	-13.17%	-4.69%
TITAN	3371.00	-8.20	-0.24%	4.44	149.40	3867.00	12.83%	2925.00	15.25%	-7.83%	-0.95%
TRENT	5043.00	41.50	0.83%	6.41	323.01	8345.00	39.57%	4488.00	12.37%	-16.91%	-9.35%
ULTRACEMCO	12251.00	30.00	0.25%	1.86	228.42	12714.00	3.64%	10047.85	21.93%	0.07%	2.92%
WIPRO	250.25	-1.55	-0.62%	60.57	151.78	324.60	22.91%	228.00	9.76%	-5.00%	-51.98%
ETERNAL	304.15	-2.40	-0.78%	216.58	659.31	314.45	3.28%	194.80	56.13%	17.07%	#VALUE!

Disclaimer / Disclosures

ANALYST CERTIFICATION

I, Mrs. Vaishali Parekh B.com, Research Analyst, author and the name subscribed to this report, hereby certify that all of the views expressed in this research report accurately reflect our views about the subject issuer(s) or securities. We also certify that no part of our compensation was, is, or will be directly or indirectly related to the specific recommendation(s) or view(s) in this report.

Terms & conditions and other disclosures:

Prabhudas Lilladher Pvt. Ltd, Mumbai, India (hereinafter referred to as "PL") is engaged in the business of Stock Broking, Portfolio Manager, Depository Participant and distribution for third party financial products. PL is a subsidiary of Prabhudas Lilladher Advisory Services Pvt Ltd. which has its various subsidiaries engaged in business of commodity broking, investment banking, financial services (margin funding) and distribution of third party financial/other products, details in respect of which are available at www.plindia.com

This document has been prepared by the Research Division of PL and is meant for use by the recipient only as information and is not for circulation. This document is not to be reported or copied or made available to others without prior permission of PL. It should not be considered or taken as an offer to sell or a solicitation to buy or sell any security.

The information contained in this report has been obtained from sources that are considered to be reliable. However, PL has not independently verified the accuracy or completeness of the same. Neither PL nor any of its affiliates, its directors or its employees accepts any responsibility of whatsoever nature for the information, statements and opinion given, made available or expressed herein or for any omission therein.

Recipients of this report should be aware that past performance is not necessarily a guide to future performance and value of investments can go down as well. The suitability or otherwise of any investments will depend upon the recipient's particular circumstances and, in case of doubt, advice should be sought from an independent expert/advisor.

Either PL or its affiliates or its directors or its employees or its representatives or its clients or their relatives may have position(s), make market, act as principal or engage in transactions of securities of companies referred to in this report and they may have used the research material prior to publication.

PL may from time to time solicit or perform investment banking or other services for any company mentioned in this document.

PL is registered as Research Analyst under Securities and Exchange Board of India (Research Analysts) Regulations, 2014 PL submits that no material disciplinary action has been taken on us by any Regulatory Authority impacting Equity Research Analysis activities.

PL or its research analysts or its associates or his relatives do not have any financial interest in the subject company.

PL or its research analysts or its associates or his relatives do not have actual/beneficial ownership of one per cent or more securities of the subject company at the end of the month immediately preceding the date of publication of the research report.

PL or its research analysts or its associates or his relatives do not have any material conflict of interest at the time of publication of the research report.

PL or its associates might have received compensation from the subject company in the past twelve months.

PL or its associates might have managed or co-managed public offering of securities for the subject company in the past twelve months or mandated by the subject company for any other assignment in the past twelve months.

PL or its associates might have received any compensation for investment banking or merchant banking or brokerage services from the subject company in the past twelve months.

PL or its associates might have received any compensation for products or services other than investment banking or merchant banking or brokerage services from the subject company in the past twelve months PL or its associates might have received any compensation or other benefits from the subject company or third party in connection with the research report.

PL encourages independence in research report preparation and strives to minimize conflict in preparation of research report. PL or its analysts did not receive any compensation or other benefits from the subject Company or third party in connection with the preparation of the research report. PL or its Research Analysts do not have any material conflict of interest at the time of publication of this report.

It is confirmed that Mrs.Vaishali Parekh B.com, Research Analyst of this report has not received any compensation from the companies mentioned in the report in the preceding twelve months compensation of our Research Analysts is not based on any specific merchant banking, investment banking or brokerage service transactions.

The Research analysts for this report certifies that all of the views expressed in this report accurately reflect his or her personal views about the subject company or companies and its or their securities, and no part of his or her compensation was, is or will be, directly or indirectly related to specific recommendations or views expressed in this report.

The research analysts for this report has not served as an officer, director or employee of the subject company PL or its research analysts have not engaged in market making activity for the subject company

Our sales people, traders, and other professionals or affiliates may provide oral or written market commentary or trading strategies to our clients that reflect opinions that are contrary to the opinions expressed herein, and our proprietary trading and investing businesses may make investment decisions that are inconsistent with the recommendations expressed herein. In reviewing these materials, you should be aware that any or all of the foregoing, among other things, may give rise to real or potential conflicts of interest.

PL and its associates, their directors and employees may (a) from time to time, have a long or short position in, and buy or sell the securities of the subject company or (b) be engaged in any other transaction involving such securities and earn brokerage or other compensation or act as a market maker in the financial instruments of the subject company or act as an advisor or lender/borrower to the subject company or may have any other potential conflict of interests with respect to any recommendation and other related information and opinions.