

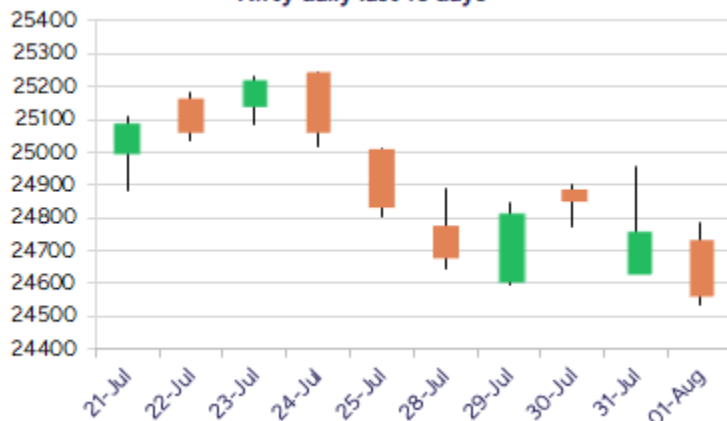
Date: 04th August 2025

* Sensex 80599.91 - 585.67

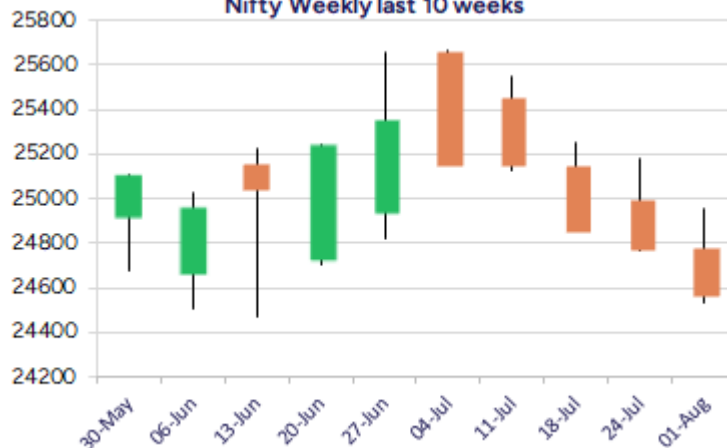
* Nifty 24565.35 - 203.00

* Bank Nifty 55617.60 - 344.35

Nifty daily last 10 days



Nifty Weekly last 10 weeks



*Blue candle → Close rate > Open rate * Red candle → Close rate < Open rate

Market Preview

Nifty at crucial juncture

Nifty slipped once again with heavy profit booking witnessed and has arrived near the crucial juncture at 24500 zone which needs to be sustained. BankNifty has witnessed resistance near the 50EMA zone at 56100 level and slipped down arriving near the crucial support zone near 55400 level. The market breadth was weak with the advance decline indicating a ratio of 1:3 at close.

Market Forecast

Nifty daily range 24400-24800

Nifty failed to move past the 24800 zone in the morning session and thereafter witnessed a steady slide as the day progressed to end on a weak note near the 25550 zone with bias and sentiment maintained with a cautious approach. The index has almost arrived near the crucial support zone of 24500 level which needs to be sustained to maintain the overall trend intact failing which one can expect for further intensified selling pressure from the counters with 24000 level positioned as the next major support.

BankNifty, once again slipped from the important 50EMA zone at 56100 level with bias weakening to close near the 55600 zone and is precariously placed as of now, with major support level at risk which can further weaken the overall trend. For the bias to improve, the index would need to sustain the important 55400 zone and, on the upside, would need to move past the 56400 zone decisively and thereafter, anticipate for further upward move.

The support for the day is seen at 24400 levels while the resistance is seen at 24800 levels. BankNifty would have the daily range of 55200-56200 levels.

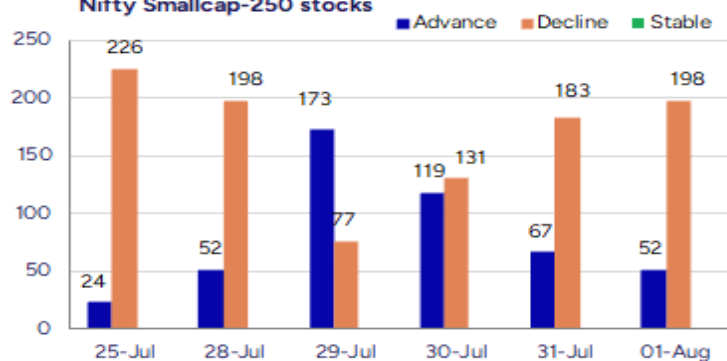
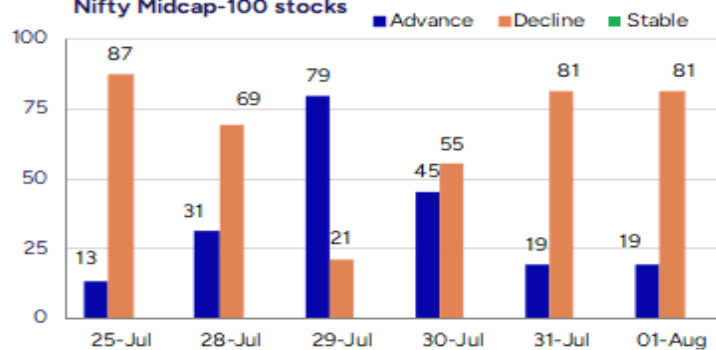
Indices	Period	Closing	% Chng	Trend	Reversal	2 Sup	1 Sup	Pivot	1 Res	2 Res
Nifty	Daily	24565.35	-0.82%	-7	24698.55	24379	24472	24628	24721	24877
	Weekly	24565.35	-1.09%	-4	25280.40	24266	24416	24686	24835	25106
	Monthly	24768.35	-2.93%	3	24708.35	23999	24384	24994	25379	25990
Bank Nifty	Daily	55617.60	-0.62%	-6	56068.15	55224	55421	55759	55956	56295
	Weekly	55617.60	-1.61%	-4	57321.30	54901	55259	55918	56276	56935
	Monthly	55961.95	-2.36%	4	55173.20	54361	55162	56360	57160	58359
Sensex	Daily	80599.91	-0.72%	-7	80992.50	79982	80291	80804	81113	81626
	Weekly	80599.91	-1.06%	-4	82793.35	79663	80132	80967	81435	82270
	Monthly	81185.58	-2.90%	-1	81149.00	78601	79893	81912	83205	85224

Gainers - Losers (Nifty 500 Stocks)
Gainers

Company Name	Last Price	% Gain	Volume
KIOCL	362.05	13.89	23326217
Jay BharatMarut	84.33	13.03	1081441
Hester Bio	2193.8	12.55	364378
Arfin India	37.66	9.99	334679
Sunrest	55.25	8.12	4800
Nikita Papers	92.8	7.78	133200
Nelcast	168.98	7.58	15059470

Losers

Company Name	Last Price	% Loss	Volume
Credo Brands Ma	132.02	-20	2580198
PNB Housing Fin	808.45	-18.02	32922061
Dhanuka Agritec	1645.6	-13.85	944005
Ram Ratna Wires	678.3	-12.74	406652
IIFL Finance	427.2	-10.62	7361251
Cyber Media	17.8	-10.6	80391
GKW	1753.9	-10.47	8491

Nifty Smallcap-250 stocks

Nifty Midcap-100 stocks


Nifty Daily chart with RSI indicator



BankNifty Daily chart with RSI indicator



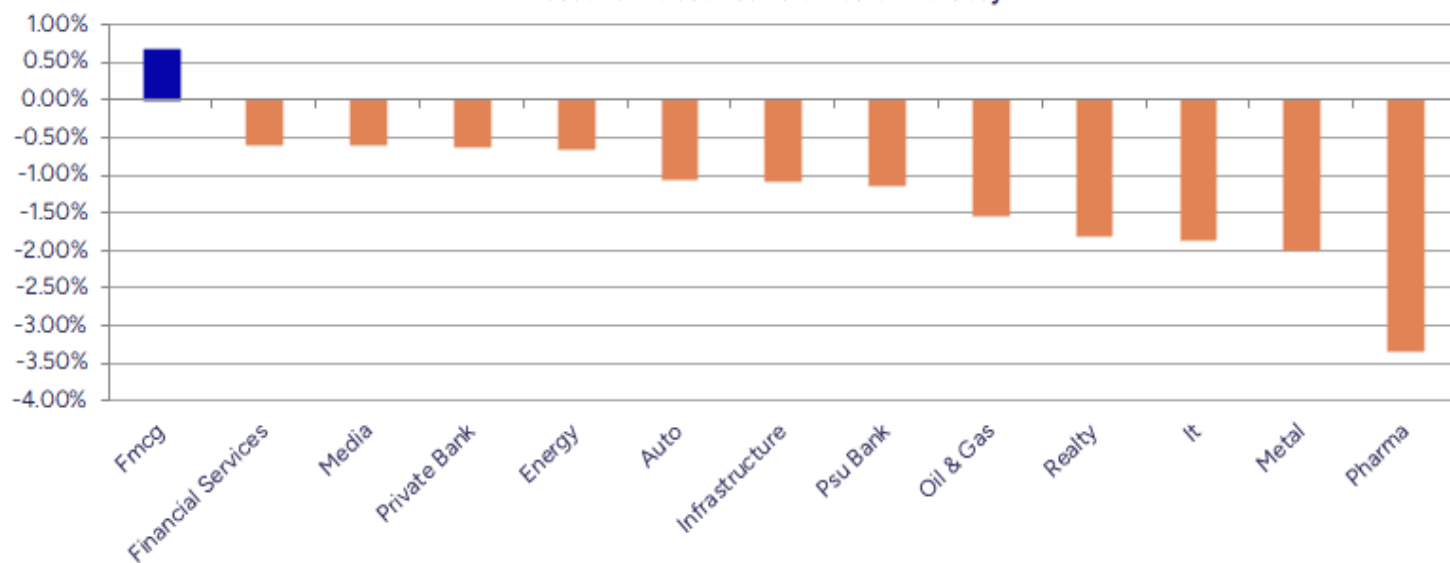
Breakouts - Cross above 200 DMA			
Company Name	LCP	Change %	200 DMA
Hester Bio	2193.8	10.84	1979.26
Jay BharatMarut	84.33	8.30	77.87
Kapston Service	258.52	6.00	243.88
Skipper	516.25	5.41	489.74
Netweb	2135.2	4.16	2049.95
Gopal Snacks	361	2.50	352.21
Eureka Forbes	572.3	1.98	561.17
Sathlokhar Syne	442.5	1.97	433.93
Asian Paints	2431	1.44	2396.59
DNL	187.25	1.23	184.98
GVP Infotech	10.73	0.94	10.63
Shriram Propert	93.06	0.78	92.34
Aditya Ultra	41.3	0.44	41.12
Megatherm Induc	322.1	0.29	321.18
Lypsa Gems	7.25	0.28	7.23

* Stocks crossing above its Simple Moving Average (200DMA)

Breakdown - Cross below 200 DMA			
Company Name	LCP	Change %	200 DMA
Credo Brands Ma	132.02	-16.67	158.43
PNB Housing Fin	808.45	-14.76	948.46
Thomas Scott	322	-4.54	337.31
Nahar Spinning	239.6	-4.54	250.99
D.K. Enterprise	69.5	-4.26	72.59
Nila Infra	11.04	-3.92	11.49
Mukta Arts	77.55	-3.71	80.54
Balkrishna Ind	2575.8	-3.62	2672.44
Strides Pharma	836.55	-3.57	867.52
Yasho Ind.	1832.8	-3.13	1892.08
Thomas Cook	160.43	-3.08	165.52
Sree Rayalaseem	619.9	-3.08	639.59
Ethos	2663.3	-2.98	2745.19
CCCL	16.32	-2.97	16.82
PG Electoplast	778.65	-2.96	802.37
Valiant Organic	337.85	-2.86	347.79
Nucleus Softwar	1015.7	-2.83	1045.32
Kirloskar Bros	1867.1	-2.76	1920.07

* Stocks crossing below its Simple Moving Average (200DMA)

Sectoral Indices - Gainers Losers for the day



Stocks witnessing a volume surge as compared to their 5 day average volume

Watch out for the stocks that have seen a huge spurt in its share price over the last three days

Volume Shockers - NSE					
Company name	LCP	% Chg	Volume	Avg Vol *	% Chg
Hester Bio	2170	11.33	355062	2810	12535
DB (Int) Stock	27.87	1.72	1414158	12716	11021
Chalet Hotels	871.55	-4.21	8977572	110615	8016
Netweb	2133.6	5.03	10027975	163390	6037
Skipper	518	6.66	14367196	334646	4193
KCK Industries	42.75	-1.27	550000	13600	3944
Unilex Colours	42.8	1.54	136000	3520	3764
Pricol	424.4	-1.94	5914024	153379	3756
Nelcast	165.68	5.47	14744314	417330	3433
UFO Moviez	76.24	4.1	1518983	53843	2721
Matrimony.com	535.65	0.81	168031	6454	2503
PNB Housing Fin	810.15	-17.85	32258805	1352009	2286
TeamLease Ser.	1816.1	-1.01	451889	19296	2242
Network 18	57.13	2.94	77283513	3715448	1980
Vaidya Sane	244.85	5	192800	9360	1960
Race Eco Chain	252.29	5.3	221395	13469	1544
Chemfab Alkalis	716	-8.7	96959	5897	1544
DC Infotech	218.94	1.69	313770	19402	1517
Radico Khaitan	2837.2	3.76	2562272	164109	1461
Surana Telecom	18.71	-0.53	1061157	74060	1333

* the Average Volume of last 5 days

Price Shockers - NSE				
Company name	LCP	Prv Close	% Chg	Volume
Zuari Agro Chem	306.25	248.01	23.48	9338426
Arfin India	37.66	31.53	19.44	334679
Hester Bio	2193.8	1843.2	19.02	364378
Arihant Academy	333	280	18.93	8400
Emerald Tyre	146.35	124.5	17.55	214800
Jay BharatMarut	84.33	71.75	17.53	1081441
GE Vernova TD	2863.1	2473.4	15.76	1047735
Sri Adhikari	1033.55	892.9	15.75	1671
Blue Coast	50.49	43.62	15.75	925
Jainam Ferro	270	233.45	15.66	12000
Ortin Global	15.6	13.49	15.64	7519
Vipul	10.3	8.91	15.6	141782
Zee Learn	10.69	9.34	14.45	2212715
Omax Autos	147.31	128.92	14.26	603018
United Polyfab	31.52	27.65	14	1014760
AION-TECH	74.9	65.75	13.92	170720
Shri Ahimsa	199.65	176.15	13.34	60000
EQUIPPP	21.46	19.01	12.89	87084
Camlin Fine	271.2	242.65	11.77	782147
Bliss GVS	173.73	155.52	11.71	697093

* the % price rise of the last 3 days

Nifty 50 stocks - Summary Details											
Symbol	LTP	Chng	% Chng	Volume (lacs)	Turnover (crs.)	52w High	Diff with 52w H	52w Low	Diff with 52w L	365 days % chng	30 days % chng
NIFTY 50	24565.35	-203.00	-0.82%	2633.47	24971.93	26277.35	6.52%	21743.65	12.98%	-3.03%	-0.73%
ADANIENT	2341.50	-89.20	-3.67%	9.76	233.08	3258.00	28.13%	2025.00	15.63%	-7.29%	-23.31%
ADANIPTS	1349.80	-23.30	-1.70%	12.40	168.28	1604.95	15.90%	995.65	35.57%	-5.11%	-12.54%
APOLLOHOSP	7360.00	-138.00	-1.84%	2.15	159.23	7635.00	3.60%	6001.00	22.65%	0.03%	13.34%
ASIANPAINT	2434.00	37.90	1.58%	22.25	544.44	3394.90	28.30%	2124.75	14.55%	1.12%	-22.32%
AXISBANK	1061.50	-6.90	-0.65%	55.45	591.07	1281.65	17.18%	933.50	13.71%	-8.94%	-8.38%
BAJAJ-AUTO	8055.00	47.00	0.59%	3.30	265.01	12774.00	36.94%	7089.35	13.62%	-4.66%	-17.14%
BAJAJFINSV	1920.00	-28.00	-1.44%	8.37	162.72	2135.00	10.07%	1523.25	26.05%	-5.15%	17.94%
BAJFINANCE	877.00	-4.20	-0.48%	53.00	468.19	978.80	10.40%	642.50	36.50%	-5.92%	-87.05%
BEL	377.25	-5.85	-1.53%	87.02	330.45	436.00	13.47%	240.25	57.02%	-11.37%	21.21%
BHARTIARTL	1878.10	-36.20	-1.89%	51.93	984.75	2045.80	8.20%	1422.60	32.02%	-5.20%	28.34%
CIPLA	1505.00	-49.60	-3.19%	21.10	318.45	1702.05	11.58%	1335.00	12.73%	2.57%	0.67%
COALINDIA	372.80	-3.55	-0.94%	137.69	516.51	543.55	31.41%	349.25	6.74%	-3.44%	-27.93%
DRREDDY	1221.40	-48.90	-3.85%	25.25	309.99	1421.49	14.08%	1020.00	19.75%	-0.51%	-81.18%
EICHERMOT	5518.00	119.50	2.21%	14.09	785.35	5906.50	6.58%	4508.75	22.38%	-4.32%	10.19%
GRASIM	2731.60	-14.80	-0.54%	3.30	90.37	2896.00	5.68%	2276.95	19.97%	-3.57%	-1.09%
HCLTECH	1450.20	-17.70	-1.21%	21.53	313.39	2012.20	27.93%	1302.75	11.32%	-14.57%	-10.64%
HDFCBANK	2016.90	-1.30	-0.06%	56.59	1140.34	2037.70	1.02%	1593.30	26.59%	0.30%	24.91%
HDFCLIFE	741.95	-13.55	-1.79%	16.98	126.94	820.75	9.60%	584.30	26.98%	-6.72%	5.59%
HEROMOTOCO	4309.00	48.30	1.13%	4.74	203.73	6246.25	31.01%	3344.00	28.86%	0.82%	-22.37%
HINDALCO	674.35	-8.70	-1.27%	34.76	234.74	772.65	12.72%	546.45	23.41%	-1.62%	2.01%
HINDUNILVR	2554.00	32.80	1.30%	42.60	1101.48	3035.00	15.85%	2136.00	19.57%	9.83%	-6.82%
ICICIBANK	1470.10	-11.30	-0.76%	44.17	651.36	1500.00	1.99%	1153.00	27.50%	3.45%	21.94%
INDUSINDBK	783.95	-14.95	-1.87%	47.39	373.58	1498.00	47.67%	606.00	29.36%	-9.12%	-44.05%
INFY	1468.30	-40.70	-2.70%	87.03	1287.80	2006.45	26.82%	1307.00	12.34%	-6.09%	-19.23%
ITC	416.60	4.65	1.13%	143.24	596.65	528.50	21.17%	390.15	6.78%	-0.76%	-16.84%
JIOFIN	329.85	0.60	0.18%	196.34	647.97	363.00	9.13%	198.65	66.05%	-0.11%	0.23%
JSWSTEEL	1028.00	-20.30	-1.94%	16.05	165.69	1074.90	4.36%	854.15	20.35%	1.82%	12.93%
KOTAKBANK	1995.90	17.30	0.87%	26.72	532.95	2301.90	13.29%	1679.05	18.87%	-9.39%	9.44%
LT	3595.20	-41.30	-1.14%	12.06	434.45	3963.50	9.29%	2965.30	21.24%	-0.82%	-4.68%
M&M	3165.00	-38.10	-1.19%	37.81	1195.23	3303.00	4.18%	2425.00	30.52%	0.85%	10.16%
MARUTI	12275.00	-198.00	-1.59%	3.46	431.77	13680.00	10.27%	10725.00	14.45%	1.33%	-3.87%
NESTLEIND	2274.70	27.00	1.20%	7.05	160.53	2778.00	18.12%	2110.00	7.81%	-6.74%	-8.49%
NTPC	331.05	-3.20	-0.96%	71.08	236.22	448.45	26.18%	292.80	13.06%	0.50%	-19.65%
ONGC	236.00	-5.00	-2.07%	126.29	298.52	345.00	31.59%	205.00	15.12%	-0.97%	-27.89%
POWERGRID	290.50	-0.50	-0.17%	66.98	194.37	366.25	20.68%	247.30	17.47%	-2.20%	-16.43%
RELIANCE	1394.10	3.90	0.28%	103.21	1442.33	1551.00	10.12%	1114.85	25.05%	-9.04%	-53.83%
SBILIFE	1801.40	-39.30	-2.14%	5.60	101.49	1936.00	6.95%	1372.55	31.24%	-1.17%	4.96%
SBIN	792.95	-3.60	-0.45%	154.68	1230.49	881.40	10.04%	680.00	16.61%	-2.90%	-8.69%
SHRIRAMFIN	615.65	-15.20	-2.41%	35.29	219.33	730.45	15.72%	493.35	24.79%	-9.42%	-78.48%
SUNPHARMA	1629.30	-77.40	-4.54%	87.75	1433.28	1960.35	16.89%	1553.05	4.91%	2.37%	-0.74%
TATACONSUM	1069.00	-4.20	-0.39%	10.40	111.94	1234.30	13.39%	882.90	21.08%	-2.04%	-9.74%
TATAMOTORS	649.70	-16.25	-2.44%	125.46	819.21	1176.00	44.75%	535.75	21.27%	-2.61%	-42.42%
TATASTEEL	153.00	-4.94	-3.13%	239.23	368.99	170.18	10.10%	122.62	24.78%	-1.32%	-4.47%
TCS	3001.10	-35.70	-1.18%	20.54	618.96	4592.25	34.65%	3000.00	0.04%	-11.46%	-30.75%
TECHM	1435.60	-28.10	-1.92%	16.20	233.65	1807.70	20.58%	1209.40	18.70%	-12.42%	-5.84%
TITAN	3313.00	-34.30	-1.02%	4.23	140.68	3867.00	14.33%	2925.00	13.26%	-9.54%	-3.23%
TRENT	5179.00	161.00	3.21%	20.35	1053.92	8345.00	37.94%	4488.00	15.40%	-18.33%	-14.06%
ULTRACEMCO	12124.00	-125.00	-1.02%	2.13	258.67	12714.00	4.64%	10047.85	20.66%	0.32%	3.04%
WIPRO	242.38	-5.92	-2.38%	74.36	181.23	324.60	25.33%	228.00	6.31%	-6.14%	-52.43%
ETERNAL	304.60	-3.20	-1.04%	164.16	502.18	314.45	3.13%	194.80	56.37%	17.93%	#VALUE!

Disclaimer / Disclosures

ANALYST CERTIFICATION

I, Mrs. Vaishali Parekh B.com, Research Analyst, author and the name subscribed to this report, hereby certify that all of the views expressed in this research report accurately reflect our views about the subject issuer(s) or securities. We also certify that no part of our compensation was, is, or will be directly or indirectly related to the specific recommendation(s) or view(s) in this report.

Terms & conditions and other disclosures:

Prabhudas Lilladher Pvt. Ltd, Mumbai, India (hereinafter referred to as "PL") is engaged in the business of Stock Broking, Portfolio Manager, Depository Participant and distribution for third party financial products. PL is a subsidiary of Prabhudas Lilladher Advisory Services Pvt Ltd. which has its various subsidiaries engaged in business of commodity broking, investment banking, financial services (margin funding) and distribution of third party financial/other products, details in respect of which are available at www.plindia.com

This document has been prepared by the Research Division of PL and is meant for use by the recipient only as information and is not for circulation. This document is not to be reported or copied or made available to others without prior permission of PL. It should not be considered or taken as an offer to sell or a solicitation to buy or sell any security.

The information contained in this report has been obtained from sources that are considered to be reliable. However, PL has not independently verified the accuracy or completeness of the same. Neither PL nor any of its affiliates, its directors or its employees accepts any responsibility of whatsoever nature for the information, statements and opinion given, made available or expressed herein or for any omission therein.

Recipients of this report should be aware that past performance is not necessarily a guide to future performance and value of investments can go down as well. The suitability or otherwise of any investments will depend upon the recipient's particular circumstances and, in case of doubt, advice should be sought from an independent expert/advisor.

Either PL or its affiliates or its directors or its employees or its representatives or its clients or their relatives may have position(s), make market, act as principal or engage in transactions of securities of companies referred to in this report and they may have used the research material prior to publication.

PL may from time to time solicit or perform investment banking or other services for any company mentioned in this document.

PL is registered as Research Analyst under Securities and Exchange Board of India (Research Analysts) Regulations, 2014 PL submits that no material disciplinary action has been taken on us by any Regulatory Authority impacting Equity Research Analysis activities.

PL or its research analysts or its associates or his relatives do not have any financial interest in the subject company.

PL or its research analysts or its associates or his relatives do not have actual/beneficial ownership of one per cent or more securities of the subject company at the end of the month immediately preceding the date of publication of the research report.

PL or its research analysts or its associates or his relatives do not have any material conflict of interest at the time of publication of the research report.

PL or its associates might have received compensation from the subject company in the past twelve months.

PL or its associates might have managed or co-managed public offering of securities for the subject company in the past twelve months or mandated by the subject company for any other assignment in the past twelve months.

PL or its associates might have received any compensation for investment banking or merchant banking or brokerage services from the subject company in the past twelve months.

PL or its associates might have received any compensation for products or services other than investment banking or merchant banking or brokerage services from the subject company in the past twelve months PL or its associates might have received any compensation or other benefits from the subject company or third party in connection with the research report.

PL encourages independence in research report preparation and strives to minimize conflict in preparation of research report. PL or its analysts did not receive any compensation or other benefits from the subject Company or third party in connection with the preparation of the research report. PL or its Research Analysts do not have any material conflict of interest at the time of publication of this report.

It is confirmed that Mrs.Vaishali Parekh B.com, Research Analyst of this report has not received any compensation from the companies mentioned in the report in the preceding twelve months compensation of our Research Analysts is not based on any specific merchant banking, investment banking or brokerage service transactions.

The Research analysts for this report certifies that all of the views expressed in this report accurately reflect his or her personal views about the subject company or companies and its or their securities, and no part of his or her compensation was, is or will be, directly or indirectly related to specific recommendations or views expressed in this report.

The research analysts for this report has not served as an officer, director or employee of the subject company PL or its research analysts have not engaged in market making activity for the subject company

Our sales people, traders, and other professionals or affiliates may provide oral or written market commentary or trading strategies to our clients that reflect opinions that are contrary to the opinions expressed herein, and our proprietary trading and investing businesses may make investment decisions that are inconsistent with the recommendations expressed herein. In reviewing these materials, you should be aware that any or all of the foregoing, among other things, may give rise to real or potential conflicts of interest.

PL and its associates, their directors and employees may (a) from time to time, have a long or short position in, and buy or sell the securities of the subject company or (b) be engaged in any other transaction involving such securities and earn brokerage or other compensation or act as a market maker in the financial instruments of the subject company or act as an advisor or lender/borrower to the subject company or may have any other potential conflict of interests with respect to any recommendation and other related information and opinions.