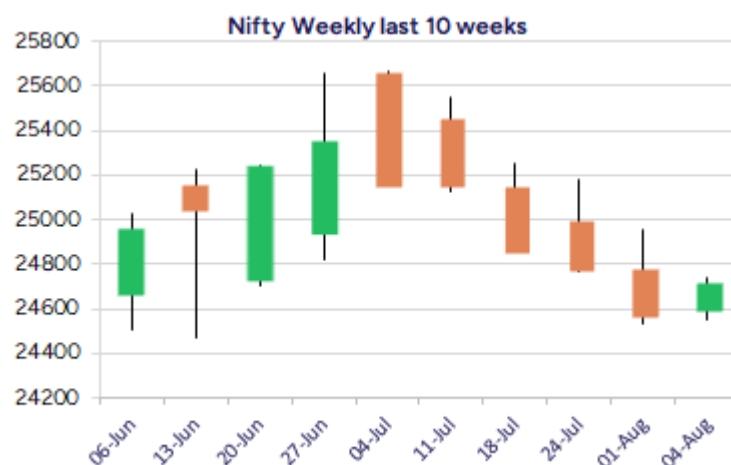
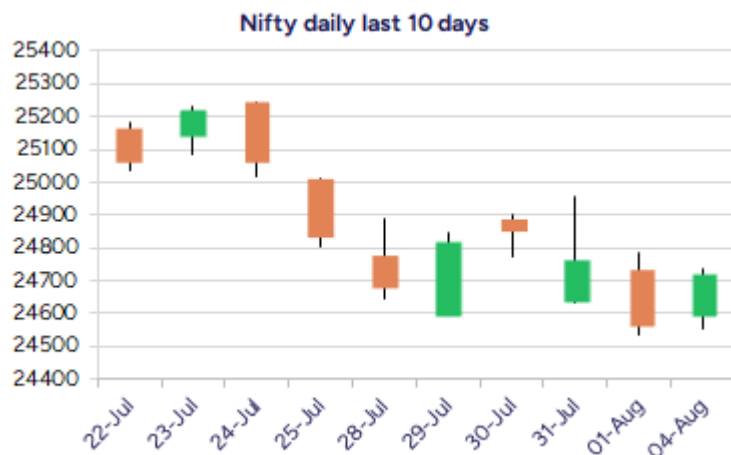


Date: 05th August 2025

* Sensex 81018.72 + 418.81

* Nifty 24722.75 + 157.40

* Bank Nifty 55619.35 + 01.75



*Blue candle → Close rate > Open rate * Red candle → Close rate < Open rate

Market Preview

Nifty recovers from the 100EMA zone.

Nifty witnessed a decent pullback from the important 100EMA zone at the 24594 level to close on a positive note to maintain the bias intact. Bank Nifty ended the session near the 55600 zone on a flat note, with strength indicated, anticipating a further rise in the coming days. The market breadth was on the positive side, with the advance decline indicating a ratio of 3:2 at close.

Market Forecast

Nifty daily range 24550-24900

Nifty witnessed a pullback and managed to close above the 24700 zone, with the broader markets showing some improvement, and further improvement can be anticipated in the coming sessions. As mentioned earlier, the index needs to decisively breach above the 50 EMA level of 24906 to establish conviction and thereafter anticipate further rise in the coming days.

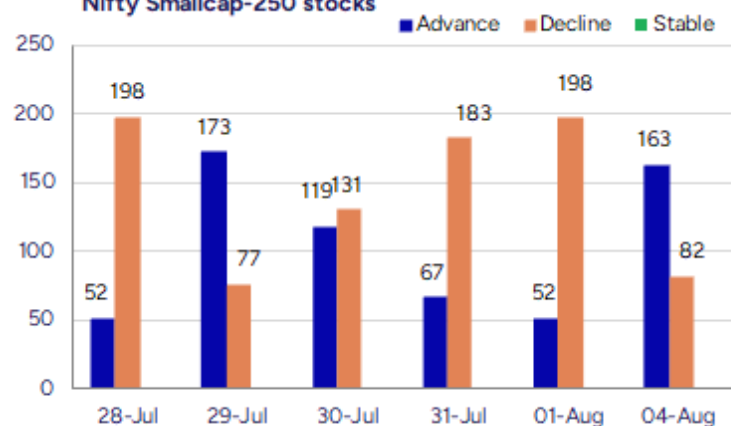
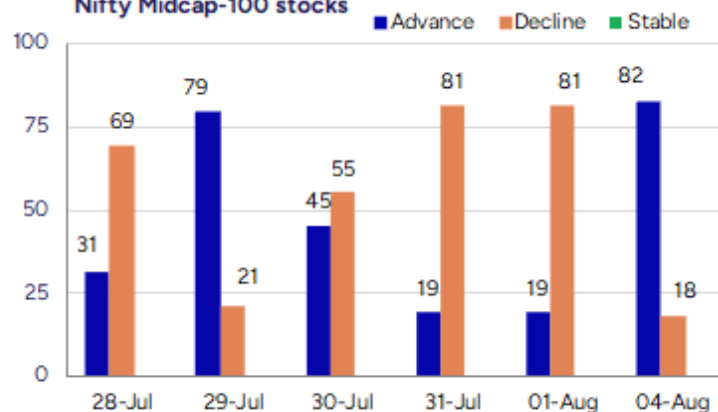
Bank Nifty, overall, remained sluggish, hovering near the 55500 zone, and has been moving within a tight range for some time, resisting near the 50EMA level of 56072 and having crucial support near the 55000 level. As mentioned earlier, the index needs to move past the important hurdle of the 56100 level to establish conviction and confirm a directional move further ahead. The support for the day is seen at 24550 levels, while the resistance is seen at 24900 levels.

BankNifty would have the daily range of 55000-56200 levels.

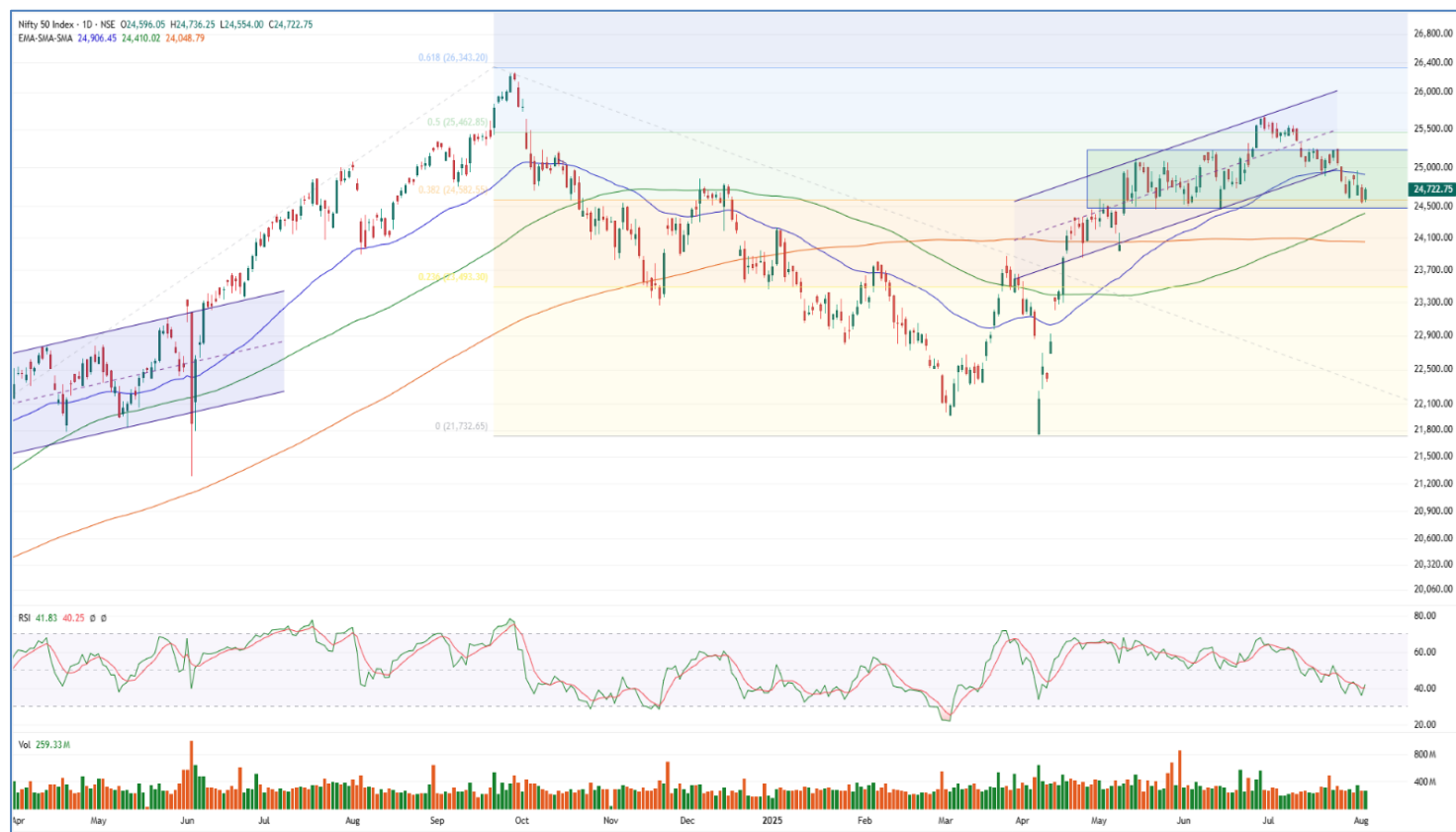
Indices	Period	Closing	% Chng	Trend	Reversal	2 Sup	1 Sup	Pivot	1 Res	2 Res
Nifty	Daily	24722.75	0.64%	1	24656.90	24489	24606	24671	24788	24853
	Weekly	24565.35	-1.09%	-4	25280.40	24266	24416	24686	24835	25106
	Monthly	24768.35	-2.93%	3	24708.35	23999	24384	24994	25379	25990
Bank Nifty	Daily	55619.35	0.00%	-7	55879.10	55288	55454	55603	55769	55918
	Weekly	55617.60	-1.61%	-4	57321.30	54901	55259	55918	56276	56935
	Monthly	55961.95	-2.36%	4	55173.20	54361	55162	56360	57160	58359
Sensex	Daily	81018.72	0.52%	1	80866.50	80278	80648	80871	81241	81463
	Weekly	80599.91	-1.06%	-4	82793.35	79663	80132	80967	81435	82270
	Monthly	81185.58	-2.90%	-1	81149.00	78601	79893	81912	83205	85224

Gainers - Losers (Nifty 500 Stocks)

Gainers				Losers			
Company Name	Last Price	% Gain	Volume	Company Name	Last Price	% Loss	Volume
Sarda Energy	516	17.46	14041405	ZIM Lab	85.94	-20	1560105
Diensten Tech	157.8	12.71	1200	Kabra Extrusion	261.05	-10.12	169687
Ather Energy	386.35	11.24	4760716	PSP Projects	684.8	-9.62	4131043
Barak Vally Cem	45.39	11.2	259516	Bhageria Indu	182.77	-8.93	203475
Unilex Colours	47.75	11.18	35200	Advanced Enzyme	328.75	-8.77	1594853
Renaissance	117.21	11.14	1907552	BIRLANU	2027.8	-8.72	118082
AB Capital	279.1	11	22868563	Vishnu Chemical	497.2	-8	1505480

Nifty Smallcap-250 stocks

Nifty Midcap-100 stocks


Nifty Daily chart with RSI indicator



BankNifty Daily chart with RSI indicator



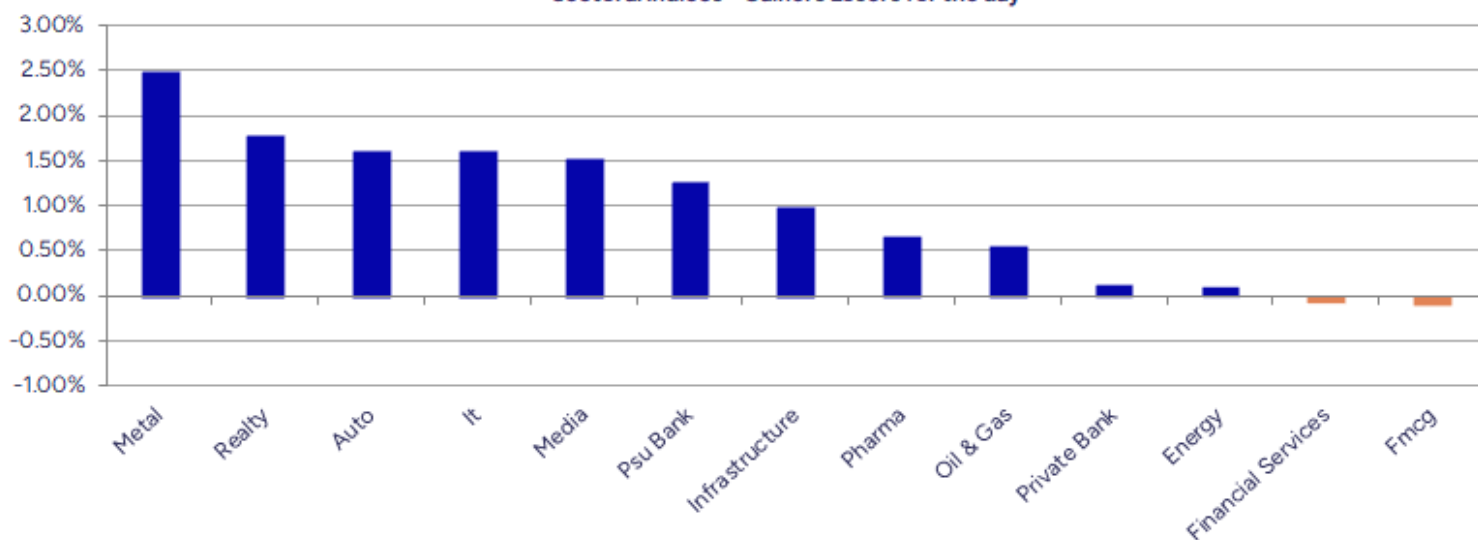
Breakouts - Cross above 200 DMA			
Company Name	LCP	Change %	200 DMA
Sarda Energy	516	11.74	461.78
Zuari Ind.	323.25	10.29	293.08
Mirza Intl	36.3	6.73	34.01
Diensten Tech	157.8	6.69	147.91
Deep Ind	520.1	6.69	487.5
Capri Global	189.41	6.60	177.69
Peninsula Land	37.98	5.41	36.03
Tainwala Chem	256.5	5.22	243.78
CDSL	1571.4	4.74	1500.31
Dynamic Cables	411	4.16	394.6
Nila Infra	11.94	4.01	11.48
Barak Vally Cem	45.39	3.65	43.79
Chola Invest.	1472.4	3.40	1423.97
Windlas	998.5	3.30	966.64
Radhika Jewel	100.84	2.95	97.95
NLC India	243.43	2.92	236.53
Mohit Ind	32.21	2.64	31.38
Godawari Power	194.66	2.59	189.75

* Stocks crossing above its Simple Moving Average (200DMA)

Breakdown - Cross below 200 DMA			
Company Name	LCP	Change %	200 DMA
ZIM Lab	85.94	-15.04	101.15
Balaji Amines	1580.9	-4.22	1650.6
Dolphin Offshor	408.25	-3.62	423.58
Asian Hotels	304.6	-3.34	315.13
Sangam India	390	-3.28	403.23
RPSG VENTURES	920	-3.07	949.16
Epigral	1825	-2.58	1873.37
Advanced Enzyme	328.5	-2.43	336.67
Medicamen Organ	41.35	-2.32	42.33
GVP Infotech	10.38	-2.26	10.62
Apex Frozen	229.25	-2.21	234.43
Greaves Cotton	213.53	-1.78	217.39
Tanla Platforms	602.5	-1.42	611.18
AMJ Land	55.55	-1.40	56.34
PSP Projects	654.85	-1.39	664.05
TMB	438.9	-1.06	443.58
Vels Film	62.3	-0.88	62.85
Delta	86.5	-0.87	87.26

* Stocks crossing below its Simple Moving Average (200DMA)

Sectoral Indices - Gainers Losers for the day



Stocks witnessing a volume surge as compared to their 5 day average volume

Watch out for the stocks that have seen a huge spurt in its share price over the last three days

Volume Shockers - NSE					
Company name	LCP	% Chg	Volume	Avg Vol *	% Chg
Sarda Energy	516.2	17.51	13479070	209183	6344
Peninsula Land	37.62	9.71	19456253	358452	5328
Hindustan Media	91.37	2.76	868795	25313	3332
Netweb	2288	7.16	5082559	163390	3011
Tainwala Chem	259.7	11.87	821828	32319	2443
Spectrum Talent	109	-0.91	56800	3040	1768
PSP Projects	653.4	-13.77	2678994	149557	1691
Vaidya Sane	255.65	4.41	125200	9360	1238
Mirza Intl	36.52	9.28	4339513	332182	1206
Univa Foods	12.32	0	51709	4129	1152
EIH Assoc Hotel	410	4.85	148940	12037	1137
Delhivery	458.3	6.62	20489236	1749966	1071
Sundaram Brake	839.85	-4.49	28184	2506	1025
Endurance Techn	2643.8	6.75	431960	38838	1012
ZIM Lab	85.94	-20	1544661	151182	922
Sunrest	52	-5.88	22400	2240	900
Motor and Gen F	29.06	11.04	1005503	106415	845
KCK Industries	42.65	-0.23	125000	13600	819
Guj Mineral	406.05	6.32	23519921	2574784	813
Krishival Foods	374	-0.77	10757	1200	796

* the Average Volume of last 5 days

Price Shockers - NSE				
Company name	LCP	Prv Close	% Chg	Volume
Arfin India	39.89	32.99	20.92	952612
Sarda Energy	527.15	446.9	17.96	15130886
Zuari Agro Chem	336.85	287.94	16.99	4080811
KIOCL	381.35	327.35	16.5	21447952
Sri Adhikari	1085.2	937.5	15.75	18132
Blue Coast	53.01	45.8	15.74	1001
Jainam Ferro	283.5	244.95	15.74	14500
Ortin Global	16.38	14.16	15.68	52387
Euro Panel	224.18	193.85	15.65	317658
Vipul	10.81	9.35	15.61	440649
Kapston Service	272.14	238.38	14.16	125018
United Polyfab	32.98	29.03	13.61	458552
Orchid Pharma	800.8	705.15	13.56	366220
Jay BharatMarut	85.99	76.06	13.06	1951461
Future Market	14.59	12.98	12.4	35771
Ather Energy	388.5	345.8	12.35	5495154
Hester Bio	2112.2	1882.8	12.18	85404
Indo Borax	293.05	262.08	11.82	164681
AB Capital	276.9	248.8	11.29	25638156
Jainik Power	109.9	98.75	11.29	46800

* the % price rise of the last 3 days

Nifty 50 stocks - Summary Details											
Symbol	LTP	Chng	% Chng	Volume (lacs)	Turnover (crs.)	52w High	Diff with 52w H	52w Low	Diff with 52w L	365 days % chng	30 days % chng
NIFTY 50	24722.75	157.40	0.64%	2593.29	20372.56	26277.35	5.92%	21743.65	13.70%	-3.52%	-0.62%
ADANIENT	2364.70	13.80	0.59%	5.76	135.95	3258.00	27.42%	2025.00	16.78%	-9.55%	-25.63%
ADANIPTS	1395.00	47.90	3.56%	13.68	188.09	1604.95	13.08%	995.65	40.11%	-5.43%	-15.17%
APOLLOHOSP	7309.00	-42.50	-0.58%	2.61	191.20	7635.00	4.27%	6001.00	21.80%	-2.67%	9.56%
ASIANPAINT	2450.00	19.00	0.78%	11.66	285.97	3394.90	27.83%	2124.75	15.31%	0.28%	-21.75%
AXISBANK	1068.70	6.30	0.59%	44.66	475.61	1281.65	16.62%	933.50	14.48%	-9.78%	-8.48%
BAJAJ-AUTO	8176.00	131.50	1.63%	2.21	180.55	12774.00	35.99%	7089.35	15.33%	-4.61%	-16.34%
BAJAJFINSV	1932.00	15.70	0.82%	9.83	189.98	2135.00	9.51%	1523.25	26.83%	-3.92%	18.04%
BAJFINANCE	885.80	10.20	1.16%	39.70	350.36	978.80	9.50%	642.50	37.87%	-5.37%	-86.98%
BEL	389.90	12.70	3.37%	134.54	520.52	436.00	10.57%	240.25	62.29%	-11.78%	24.51%
BHARTIARTL	1915.10	30.70	1.63%	30.74	587.05	2045.80	6.39%	1422.60	34.62%	-6.58%	26.15%
CIPLA	1515.60	12.80	0.85%	5.49	83.20	1702.05	10.95%	1335.00	13.53%	-0.69%	-1.70%
COALINDIA	376.10	3.60	0.97%	197.57	740.79	543.55	30.81%	349.25	7.69%	-3.52%	-28.98%
DRREDDY	1224.00	3.40	0.28%	7.67	94.14	1421.49	13.89%	1020.00	20.00%	-6.64%	-82.47%
EICHERMOT	5615.00	87.00	1.57%	5.05	284.19	5906.50	4.94%	4508.75	24.54%	-1.79%	16.95%
GRASIM	2791.10	68.90	2.53%	5.70	158.13	2896.00	3.62%	2276.95	22.58%	-2.98%	0.57%
HCLTECH	1470.40	18.30	1.26%	23.85	348.20	2012.20	26.93%	1302.75	12.87%	-15.86%	-9.77%
HDFCBANK	1994.40	-17.80	-0.88%	69.67	1391.97	2037.70	2.12%	1593.30	25.17%	1.15%	21.28%
HDFCLIFE	741.45	-0.25	-0.03%	25.55	189.07	820.75	9.66%	584.30	26.90%	-5.53%	4.85%
HEROMOTOCO	4535.00	223.40	5.18%	14.55	649.27	6246.25	27.40%	3344.00	35.62%	-0.77%	-18.25%
HINDALCO	688.50	16.05	2.39%	22.86	156.56	772.65	10.89%	546.45	26.00%	-3.86%	3.77%
HINDUNILVR	2541.00	-12.70	-0.50%	12.93	329.81	3035.00	16.28%	2136.00	18.96%	9.17%	-5.16%
ICICIBANK	1463.10	-8.50	-0.58%	61.40	900.54	1500.00	2.46%	1153.00	26.90%	2.00%	22.99%
INDUSINDBK	802.95	19.25	2.46%	29.81	237.47	1498.00	46.40%	606.00	32.50%	-8.47%	-44.19%
INFY	1480.70	11.10	0.76%	86.10	1265.31	2006.45	26.20%	1307.00	13.29%	-10.43%	-19.31%
ITC	416.65	0.20	0.05%	183.52	767.04	528.50	21.16%	390.15	6.79%	0.95%	-14.85%
JIOFIN	334.85	5.35	1.62%	198.51	661.01	363.00	7.75%	198.65	68.56%	1.40%	1.00%
JSWSTEEL	1057.20	29.40	2.86%	18.36	192.31	1074.90	1.65%	854.15	23.77%	-1.31%	14.26%
KOTAKBANK	1996.10	3.70	0.19%	15.43	308.08	2301.90	13.28%	1679.05	18.88%	-6.45%	10.48%
LT	3630.00	42.70	1.19%	10.33	374.16	3963.50	8.41%	2965.30	22.42%	-0.20%	-2.14%
M&M	3197.60	38.30	1.21%	26.84	858.94	3303.00	3.19%	2425.00	31.86%	-0.10%	14.90%
MARUTI	12357.00	55.00	0.45%	2.56	315.24	13680.00	9.67%	10725.00	15.22%	-2.72%	-3.33%
NESTLEIND	2278.00	1.50	0.07%	4.06	92.40	2778.00	18.00%	2110.00	7.96%	-4.86%	-8.76%
NTPC	332.40	1.50	0.45%	81.93	271.37	448.45	25.88%	292.80	13.52%	-1.37%	-21.16%
ONGC	235.13	-1.66	-0.70%	161.75	380.14	345.00	31.85%	205.00	14.70%	-3.45%	-28.27%
POWERGRID	288.00	-3.25	-1.12%	103.97	300.02	366.25	21.37%	247.30	16.46%	-0.94%	-18.70%
RELIANCE	1410.20	16.50	1.18%	63.13	890.49	1551.00	9.08%	1114.85	26.49%	-8.75%	-53.52%
SBILIFE	1825.00	28.80	1.60%	8.44	153.29	1936.00	5.73%	1372.55	32.96%	-0.19%	2.94%
SBIN	796.80	2.80	0.35%	88.21	698.98	881.40	9.60%	680.00	17.18%	-2.20%	-6.35%
SHRIRAMFIN	625.40	11.20	1.82%	29.55	183.98	730.45	14.38%	493.35	26.77%	-9.16%	-79.47%
SUNPHARMA	1638.40	8.70	0.53%	18.99	310.20	1960.35	16.42%	1553.05	5.50%	-2.78%	-5.89%
TATACONSUM	1075.00	4.60	0.43%	6.64	70.90	1234.30	12.91%	882.90	21.76%	-1.77%	-10.33%
TATAMOTORS	653.90	5.05	0.78%	80.34	524.89	1176.00	44.40%	535.75	22.05%	-5.83%	-40.83%
TATASTEEL	159.25	6.24	4.08%	300.65	475.17	170.18	6.42%	122.62	29.87%	-6.13%	-3.29%
TCS	3078.70	75.70	2.52%	25.19	767.42	4592.25	32.96%	2991.60	2.91%	-12.19%	-29.89%
TECHM	1475.00	36.20	2.52%	15.81	230.60	1807.70	18.40%	1209.40	21.96%	-13.07%	-4.57%
TITAN	3350.60	34.60	1.04%	4.50	150.87	3867.00	13.35%	2925.00	14.55%	-10.06%	-4.23%
TRENT	5248.50	68.50	1.32%	7.91	414.22	8345.00	37.11%	4488.00	16.95%	-5.06%	-6.47%
ULTRACEMCO	12250.00	137.00	1.13%	2.08	254.04	12714.00	3.65%	10047.85	21.92%	-3.14%	2.96%
WIPRO	245.80	3.05	1.26%	52.34	127.90	324.60	24.28%	228.00	7.81%	-10.11%	-51.66%
ETERNAL	305.95	1.20	0.39%	218.62	664.98	314.45	2.70%	194.80	57.06%	16.58%	#VALUE!

Disclaimer / Disclosures

ANALYST CERTIFICATION

I, Mrs. Vaishali Parekh B.com, Research Analyst, author and the name subscribed to this report, hereby certify that all of the views expressed in this research report accurately reflect our views about the subject issuer(s) or securities. We also certify that no part of our compensation was, is, or will be directly or indirectly related to the specific recommendation(s) or view(s) in this report.

Terms & conditions and other disclosures:

Prabhudas Lilladher Pvt. Ltd, Mumbai, India (hereinafter referred to as "PL") is engaged in the business of Stock Broking, Portfolio Manager, Depository Participant and distribution for third party financial products. PL is a subsidiary of Prabhudas Lilladher Advisory Services Pvt Ltd. which has its various subsidiaries engaged in business of commodity broking, investment banking, financial services (margin funding) and distribution of third party financial/other products, details in respect of which are available at www.plindia.com

This document has been prepared by the Research Division of PL and is meant for use by the recipient only as information and is not for circulation. This document is not to be reported or copied or made available to others without prior permission of PL. It should not be considered or taken as an offer to sell or a solicitation to buy or sell any security.

The information contained in this report has been obtained from sources that are considered to be reliable. However, PL has not independently verified the accuracy or completeness of the same. Neither PL nor any of its affiliates, its directors or its employees accepts any responsibility of whatsoever nature for the information, statements and opinion given, made available or expressed herein or for any omission therein.

Recipients of this report should be aware that past performance is not necessarily a guide to future performance and value of investments can go down as well. The suitability or otherwise of any investments will depend upon the recipient's particular circumstances and, in case of doubt, advice should be sought from an independent expert/advisor.

Either PL or its affiliates or its directors or its employees or its representatives or its clients or their relatives may have position(s), make market, act as principal or engage in transactions of securities of companies referred to in this report and they may have used the research material prior to publication.

PL may from time to time solicit or perform investment banking or other services for any company mentioned in this document.

PL is registered as Research Analyst under Securities and Exchange Board of India (Research Analysts) Regulations, 2014 PL submits that no material disciplinary action has been taken on us by any Regulatory Authority impacting Equity Research Analysis activities.

PL or its research analysts or its associates or his relatives do not have any financial interest in the subject company.

PL or its research analysts or its associates or his relatives do not have actual/beneficial ownership of one per cent or more securities of the subject company at the end of the month immediately preceding the date of publication of the research report.

PL or its research analysts or its associates or his relatives do not have any material conflict of interest at the time of publication of the research report.

PL or its associates might have received compensation from the subject company in the past twelve months.

PL or its associates might have managed or co-managed public offering of securities for the subject company in the past twelve months or mandated by the subject company for any other assignment in the past twelve months.

PL or its associates might have received any compensation for investment banking or merchant banking or brokerage services from the subject company in the past twelve months.

PL or its associates might have received any compensation for products or services other than investment banking or merchant banking or brokerage services from the subject company in the past twelve months PL or its associates might have received any compensation or other benefits from the subject company or third party in connection with the research report.

PL encourages independence in research report preparation and strives to minimize conflict in preparation of research report. PL or its analysts did not receive any compensation or other benefits from the subject Company or third party in connection with the preparation of the research report. PL or its Research Analysts do not have any material conflict of interest at the time of publication of this report.

It is confirmed that Mrs.Vaishali Parekh B.com, Research Analyst of this report has not received any compensation from the companies mentioned in the report in the preceding twelve months compensation of our Research Analysts is not based on any specific merchant banking, investment banking or brokerage service transactions.

The Research analysts for this report certifies that all of the views expressed in this report accurately reflect his or her personal views about the subject company or companies and its or their securities, and no part of his or her compensation was, is or will be, directly or indirectly related to specific recommendations or views expressed in this report.

The research analysts for this report has not served as an officer, director or employee of the subject company PL or its research analysts have not engaged in market making activity for the subject company

Our sales people, traders, and other professionals or affiliates may provide oral or written market commentary or trading strategies to our clients that reflect opinions that are contrary to the opinions expressed herein, and our proprietary trading and investing businesses may make investment decisions that are inconsistent with the recommendations expressed herein. In reviewing these materials, you should be aware that any or all of the foregoing, among other things, may give rise to real or potential conflicts of interest.

PL and its associates, their directors and employees may (a) from time to time, have a long or short position in, and buy or sell the securities of the subject company or (b) be engaged in any other transaction involving such securities and earn brokerage or other compensation or act as a market maker in the financial instruments of the subject company or act as an advisor or lender/borrower to the subject company or may have any other potential conflict of interests with respect to any recommendation and other related information and opinions.