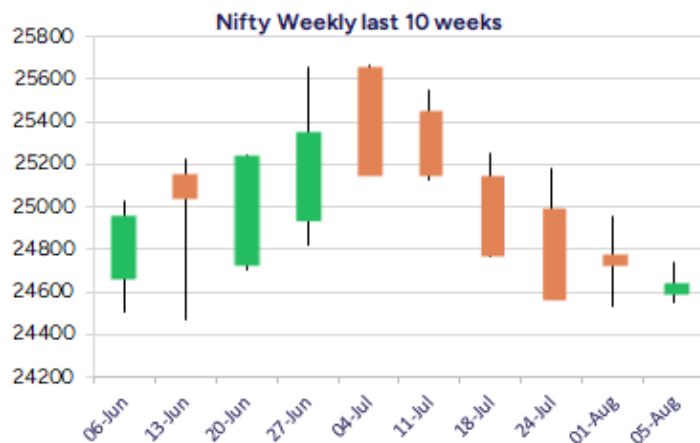
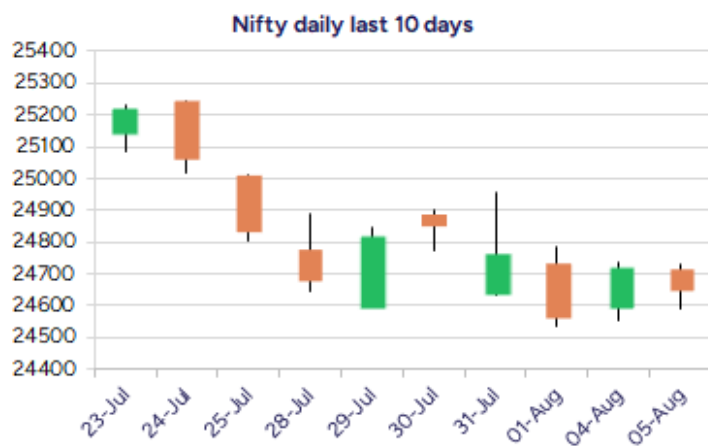


Date: 06th August 2025

* Sensex 80710.25 - 308.47

* Nifty 24649.55 - 73.20

* Bank Nifty 55360.25 - 259.10



*Blue candle → Close rate > Open rate * Red candle → Close rate < Open rate

Market Preview

Nifty hovers near the crucial support zone of 24500

Nifty failed to move past the 24700 zone with profit booking dragging the index and witnessed a sluggish session to end near 24650 level. BankNifty slipped further extending the losses and with weak bias ended near the 55400 level desparately expecting for a revival. The market breadth was weak with the advance decline indicating a ratio of 2:3 at close.

Market Forecast

Nifty daily range 24500-24800

Nifty once again slipped down from the 24700 zone in the morning session and thereafter hovered near the 24600 level for the rest part of the trading session with bias precariously placed and would need further clarity in the coming sessions. Once again we maintain our view, the crucial support zone of 24500 level needs to be sustained to maintain the overall trend intact failing which one can expect for further intensified selling pressure from the counters with 24000 level positioned as the next major support.

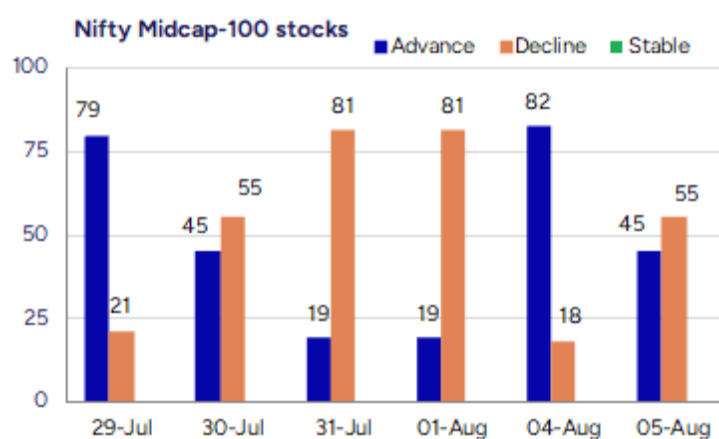
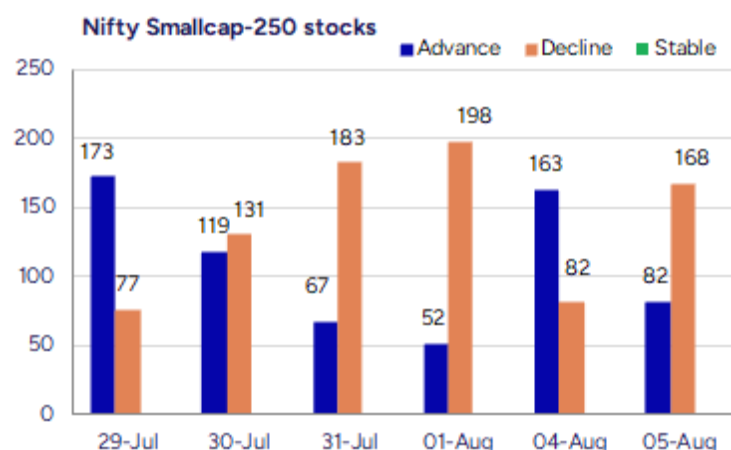
BankNifty, slowly is slipping down towards the 55000 zone with bias weakening and would need a revival in the coming sessions to expect for some decent pullback in the coming sessions. The index has got the important 100 period MA at 56700 level which would be the next support zone and would need to sustain whereas on the upside, a decisive breach above the 50EMA zone at 56000 level is much needed to improve the bias and thereafter, expect for further rise.

The support for the day is seen at 24500 levels while the resistance is seen at 24800 levels. BankNifty would have the daily range of 54800-56000 levels.

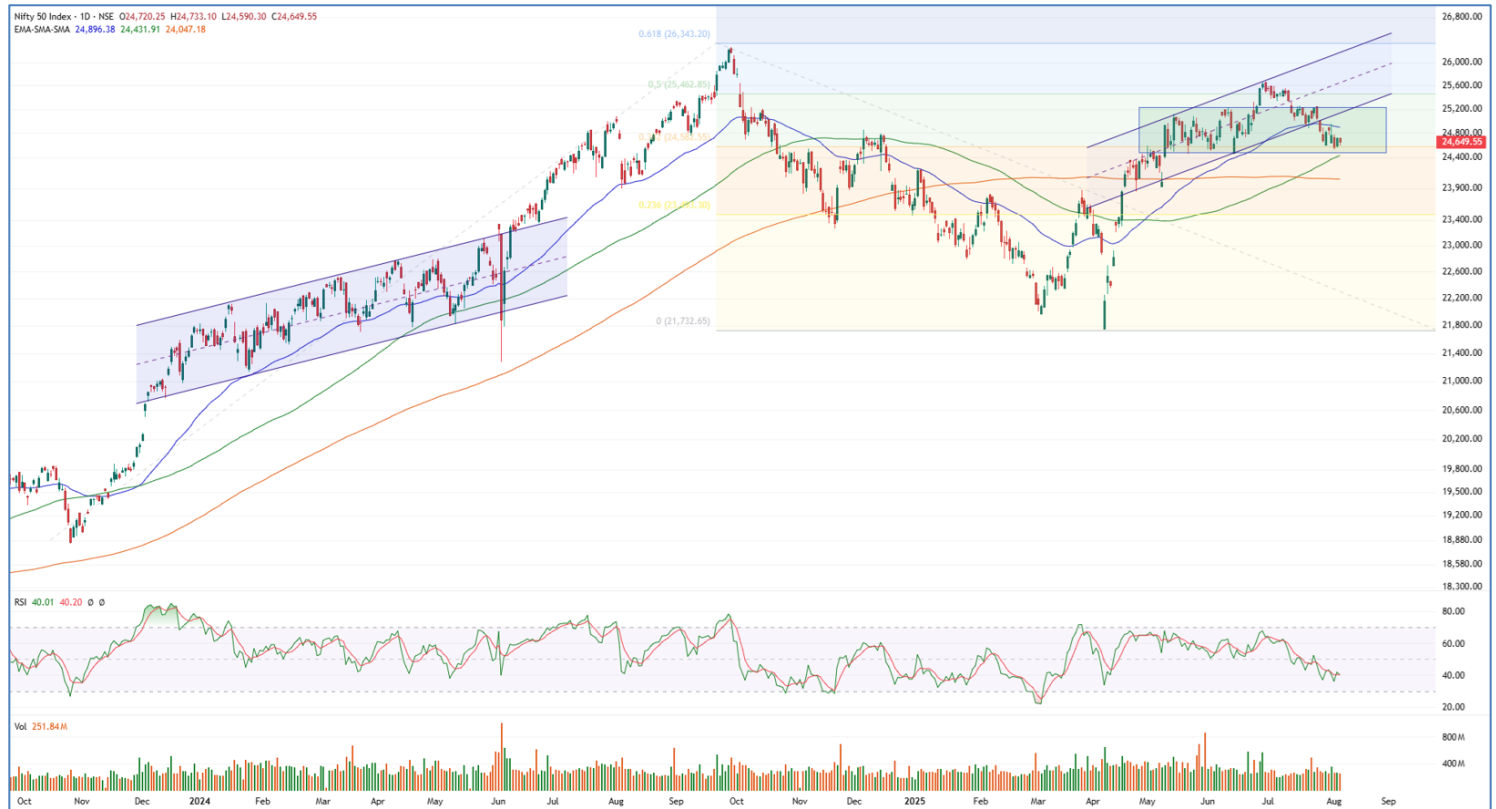
Indices	Period	Closing	% Chng	Trend	Reversal	2 Sup	1 Sup	Pivot	1 Res	2 Res
Nifty	Daily	24649.55	-0.30%	-1	24654.15	24515	24582	24658	24725	24800
	Weekly	24565.35	-1.09%	-4	25280.40	24266	24416	24686	24835	25106
	Monthly	24768.35	-2.93%	3	24708.35	23999	24384	24994	25379	25990
Bank Nifty	Daily	55360.25	-0.47%	-8	55667.55	54958	55159	55404	55605	55849
	Weekly	55617.60	-1.61%	-4	57321.30	54901	55259	55918	56276	56935
	Monthly	55961.95	-2.36%	4	55173.20	54361	55162	56360	57160	58359
Sensex	Daily	80710.25	-0.38%	-1	80792.00	80302	80506	80758	80962	81214
	Weekly	80599.91	-1.06%	-4	82793.35	79663	80132	80967	81435	82270
	Monthly	81185.58	-2.90%	-1	81149.00	78601	79893	81912	83205	85224

Gainers - Losers (Nifty 500 Stocks)

Gainers				Losers			
Company Name	Last Price	% Gain	Volume	Company Name	Last Price	% Loss	Volume
Newgen Software	945.75	13.39	15324283	Sheetal Cool Pr	269.9	-9.96	35995
Tanla Platforms	679.15	12.79	11114161	Triveni Turbine	532.45	-9.81	4418594
Prakash Ind	187.1	11.91	17553493	Diensten Tech	144	-8.75	1200
Sanofi Consumer	5308.3	10.73	188316	Gokaldas Export	750	-8.61	1151771
MTAR Tech	1601	10.6	689116	Network People	2172.9	-7.83	49167
SMS Lifescience	1212.5	10.5	30842	Sangam India	362.35	-7.04	137133
Xtglobal	37.1	10.42	289766	Digikore	157.05	-6.63	14000



Nifty Daily chart with RSI indicator



BankNifty Daily chart with RSI indicator



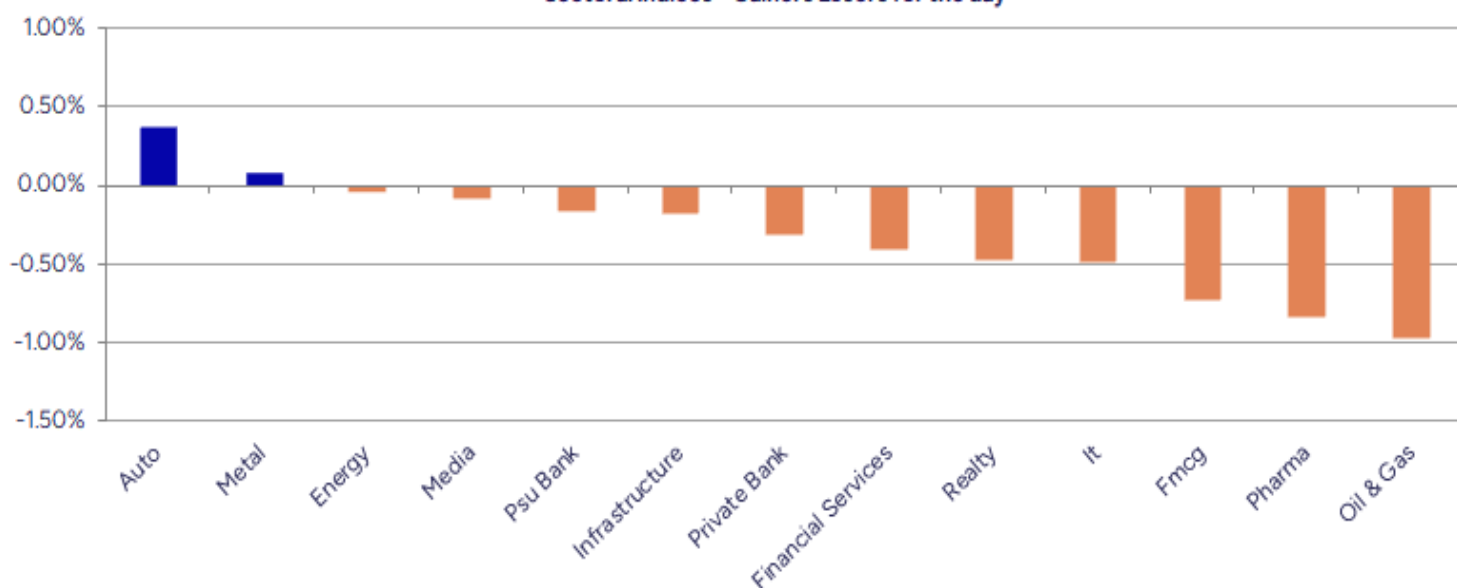
Breakouts - Cross above 200 DMA			
Company Name	LCP	Change %	200 DMA
Tanla Platforms	679.15	11.36	609.86
Sanofi Consumer	5308.3	8.23	4904.76
Western Carrier	111.55	6.06	105.18
Butterfly	747.75	4.15	717.93
Varroc Engineer	538.3	3.78	518.69
Igarashi Motors	615.5	3.29	595.92
Delta	90	3.22	87.19
MTAR	1601	3.14	1552.31
Chambal Fert	567.55	3.05	550.75
Sequent Scienti	179.15	3.03	173.88
Vels Film	64.75	2.94	62.9
Epigral	1920	2.63	1870.8
Tribhovandas	212.21	1.42	209.24
Motherson SWI	39.17	1.35	38.65
AMJ Land	57.07	1.26	56.36
Pidilite Ind	3003.1	1.22	2966.8
Thirumalai Chem	287.9	1.19	284.51
INFOLLION	449.4	1.13	444.4

* Stocks crossing above its Simple Moving Average (200DMA)

Breakdown - Cross below 200 DMA			
Company Name	LCP	Change %	200 DMA
Network People	2172.9	-6.33	2319.75
Reliance Infra	281.35	-3.74	292.27
Diensten Tech	144	-2.64	147.9
Sathlokhar Syne	425	-2.09	434.05
LIC Housing Fin	578.75	-2.06	590.95
Ausom Enterp	99.3	-2.05	101.38
Manba Finance	142.31	-2.04	145.28
Prudent Advisor	2525.5	-1.86	2573.48
SOLARA ACTIVE P	598.2	-1.73	608.75
Reliance Power	45.2	-1.68	45.97
Windlas	951.3	-1.58	966.6
R R Kabel	1266.8	-1.17	1281.86
The Hi-Tech Gea	702	-1.17	710.28
Keystone Real	596.2	-1.15	603.15
Aspinwall	279.9	-1.14	283.13
JB Chemicals	1693	-1.12	1712.25
Steel City Secu	103	-1.09	104.14
Vinati Organics	1750	-1.00	1767.66

* Stocks crossing below its Simple Moving Average (200DMA)

Sectoral Indices - Gainers Losers for the day



Stocks witnessing a volume surge as compared to their 5 day average volume

Watch out for the stocks that have seen a huge spurt in its share price over the last three days

Volume Shockers - NSE					
Company name	LCP	% Chg	Volume	Avg Vol *	% Chg
Butterfly	747.75	5.34	780797	10723	7181
Newgen Software	945.75	13.39	15324283	265488	5672
Xtglobal	37.1	10.42	289766	8509	3305
Tania Platforms	679.15	12.79	11114161	392105	2734
Prakash Ind	187.1	11.91	17553493	857000	1948
Azad Eng	1557.7	3.83	1363529	69963	1849
Shera Energy	144.75	6.24	192000	10400	1746
GPT Infra	133.8	3.54	2057146	129785	1485
Jocil	167.68	9.75	68332	4402	1452
Tata Inv Corp	7142.5	2.39	1284385	91638	1302
SMS Lifescience	1212.5	10.5	30842	2316	1232
Jupiter Life	1411.4	-2.65	144110	11977	1103
Aro Granite	38	7.8	135221	11894	1037
Kamat Hotels	260.17	7.17	1527003	134745	1033
Jeena Sikho	572.3	3.5	203400	18612	993
Triveni Turbine	532.45	-9.81	4418594	418464	956
A G Universal	59.8	-0.33	64000	6400	900
Netweb	2204	-4.34	1538182	163390	841
BEW Engineering	154.95	0.06	10500	1125	833
Ortin Global	17.19	4.95	351143	38596	810

* the Average Volume of last 5 days

Price Shockers - NSE				
Company name	LCP	Prv Close	% Chg	Volume
Sarda Energy	535.85	439.3	21.98	12011241
DC Infotech	257	221.9	15.82	353825
Newgen Software	945.75	818.15	15.6	15324283
Brightcom Group	16.12	13.97	15.39	45797995
Ather Energy	400.25	347.3	15.25	4742372
Euro Panel	235.02	204.28	15.05	124418
Peninsula Land	39.43	34.29	14.99	6442261
Prakash Ind	187.1	164.3	13.88	17553493
Godfrey Phillip	9881.5	8777	12.58	991393
Zuari Agro Chem	344.55	306.25	12.51	3637131
Mirc Electronic	17.1	15.22	12.35	4115167
AB Capital	281.75	251.45	12.05	16227289
Xtglobal	37.1	33.31	11.38	289766
SMS Lifescience	1212.5	1092.5	10.98	30842
Tribhovandas	212.21	191.53	10.8	2875169
Jayaswal Neco	54.15	48.95	10.62	139608490
Tainwala Chem	256.65	232.15	10.55	107237
BGR Energy	106.73	96.81	10.25	12935
Sri Adhikari	1139.45	1033.55	10.25	9436
Jainam Ferro	297.65	270	10.24	8500

* the % price rise of the last 3 days

Nifty 50 stocks - Summary Details											
Symbol	LTP	Chng	% Chng	Volume (lacs)	Turnover (crs.)	52w High	Diff with 52w H	52w Low	Diff with 52w L	365 days % chng	30 days % chng
NIFTY 50	24649.55	-73.20	-0.30%	2518.50	23815.20	26277.35	6.19%	21743.65	13.36%	-2.90%	0.02%
ADANIEN	2333.00	-30.60	-1.29%	5.77	134.58	3242.65	28.05%	2025.00	15.21%	-9.06%	-25.22%
ADANIPTS	1361.90	-27.00	-1.94%	30.00	411.57	1563.45	12.89%	995.65	36.79%	-2.49%	-12.54%
APOLLOHOSP	7260.00	-48.00	-0.66%	2.83	205.90	7635.00	4.91%	6001.00	20.98%	-3.25%	8.91%
ASIANPAINT	2434.90	-14.90	-0.61%	6.59	160.35	3394.90	28.28%	2124.75	14.60%	1.06%	-21.14%
AXISBANK	1071.10	2.50	0.23%	53.18	569.76	1281.65	16.43%	933.50	14.74%	-9.26%	-7.95%
BAJAJ-AUTO	8221.00	33.50	0.41%	1.94	158.91	12774.00	35.64%	7089.35	15.96%	-2.91%	-14.86%
BAJAJFINSV	1942.00	8.40	0.43%	11.02	212.27	2135.00	9.04%	1523.25	27.49%	-3.05%	19.10%
BAJFINANCE	892.30	7.00	0.79%	44.47	395.12	978.80	8.84%	642.50	38.88%	-4.32%	-86.84%
BEL	386.60	-2.95	-0.76%	134.83	520.50	436.00	11.33%	240.25	60.92%	-8.89%	28.59%
BHARTIARTL	1930.30	15.70	0.82%	51.68	996.80	2045.80	5.65%	1422.60	35.69%	-5.09%	28.17%
CIPLA	1496.30	-18.80	-1.24%	11.57	173.61	1702.05	12.09%	1335.00	12.08%	0.12%	-0.90%
COALINDIA	379.80	5.10	1.36%	68.47	258.48	543.55	30.13%	349.25	8.75%	-2.95%	-28.56%
DRREDDY	1214.40	-10.60	-0.87%	9.57	116.23	1421.49	14.57%	1020.00	19.06%	-6.30%	-82.41%
EICHERMOT	5684.00	63.00	1.12%	4.58	258.62	5906.50	3.77%	4508.75	26.07%	-0.14%	18.92%
GRASIM	2792.70	4.90	0.18%	7.83	219.26	2896.00	3.57%	2276.95	22.65%	-0.65%	2.99%
HCLTECH	1480.90	6.50	0.44%	26.14	387.00	2012.20	26.40%	1302.75	13.67%	-14.57%	-8.38%
HDFCBANK	1981.00	-11.00	-0.55%	119.89	2368.55	2037.70	2.78%	1593.30	24.33%	0.14%	20.06%
HDFCLIFE	737.65	-2.15	-0.29%	19.88	146.37	820.75	10.12%	584.30	26.25%	-5.77%	4.58%
HEROMOTOCO	4540.00	4.10	0.09%	8.04	365.86	6246.25	27.32%	3344.00	35.77%	4.39%	-14.00%
HINDALCO	685.85	-1.85	-0.27%	33.03	226.85	772.65	11.23%	546.45	25.51%	-1.68%	6.12%
HINDUNILVR	2532.40	-11.30	-0.44%	7.56	191.37	3035.00	16.56%	2136.00	18.56%	8.74%	-5.53%
ICICIBANK	1445.00	-18.20	-1.24%	147.99	2139.63	1500.00	3.67%	1153.00	25.33%	1.41%	22.28%
INDUSINDBK	817.40	13.35	1.66%	189.83	1570.06	1498.00	45.43%	606.00	34.88%	-6.10%	-42.74%
INFY	1460.00	-20.50	-1.38%	102.13	1492.22	2006.45	27.23%	1307.00	11.71%	-9.76%	-18.71%
ITC	413.80	-3.05	-0.73%	84.95	351.98	528.50	21.70%	390.15	6.06%	1.04%	-14.77%
JIOFIN	332.60	-1.30	-0.39%	160.53	537.41	363.00	8.37%	198.65	67.43%	2.75%	2.34%
JSWSTEEL	1054.10	-1.80	-0.17%	15.25	160.62	1074.90	1.94%	854.15	23.41%	1.39%	17.38%
KOTAKBANK	2004.00	7.00	0.35%	24.21	484.58	2301.90	12.94%	1679.05	19.35%	-6.24%	10.73%
LT	3650.00	18.90	0.52%	11.58	421.41	3963.50	7.91%	2965.30	23.09%	1.02%	-0.94%
M&M	3213.00	12.80	0.40%	18.06	577.58	3303.00	2.72%	2425.00	32.49%	1.19%	16.39%
MARUTI	12543.00	178.00	1.44%	2.34	292.25	13541.65	7.37%	10725.00	16.95%	-2.22%	-2.84%
NESTLEIND	2264.20	-13.20	-0.58%	5.68	128.49	2778.00	18.50%	2110.00	7.31%	-4.82%	-8.73%
NTPC	333.65	1.65	0.50%	98.56	327.87	448.45	25.60%	292.80	13.95%	-1.04%	-20.90%
ONGC	234.30	-0.53	-0.23%	95.63	224.06	345.00	32.09%	205.00	14.29%	-4.24%	-28.86%
POWERGRID	285.90	-2.05	-0.71%	155.62	445.79	366.25	21.94%	247.30	15.61%	-2.06%	-19.62%
RELIANCE	1390.00	-21.50	-1.52%	93.16	1299.11	1551.00	10.38%	1114.85	24.68%	-7.58%	-52.93%
SBILIFE	1860.00	28.50	1.56%	12.52	231.37	1936.00	3.93%	1372.55	35.51%	1.77%	4.96%
SBIN	800.50	4.80	0.60%	73.82	590.66	875.45	8.56%	680.00	17.72%	-1.99%	-6.15%
SHRIRAMFIN	629.00	4.10	0.66%	39.97	250.53	730.45	13.89%	493.35	27.50%	-7.58%	-79.12%
SUNPHARMA	1631.90	-9.70	-0.59%	16.23	264.48	1960.35	16.75%	1553.05	5.08%	-2.07%	-5.20%
TATACONSUM	1065.50	-7.10	-0.66%	8.61	91.65	1234.30	13.68%	882.90	20.68%	-1.57%	-10.14%
TATAMOTORS	655.00	1.40	0.21%	67.15	439.25	1142.00	42.64%	535.75	22.26%	-5.14%	-40.40%
TATASTEEL	159.45	-0.11	-0.07%	144.41	230.16	170.18	6.31%	122.62	30.04%	-2.12%	0.85%
TCS	3060.00	-14.40	-0.47%	19.28	589.57	4592.25	33.37%	2991.60	2.29%	-10.10%	-28.22%
TECHM	1483.00	8.00	0.54%	29.30	433.47	1807.70	17.96%	1209.40	22.62%	-10.89%	-2.17%
TITAN	3424.00	67.70	2.02%	8.37	285.13	3867.00	11.46%	2925.00	17.06%	-8.97%	-3.06%
TRENT	5320.00	71.00	1.35%	9.77	517.66	8345.00	36.25%	4488.00	18.54%	-3.79%	-5.22%
ULTRACEMCO	12327.00	70.00	0.57%	2.68	329.22	12714.00	3.04%	10047.85	22.68%	-1.99%	4.19%
WIPRO	245.45	-0.60	-0.24%	73.84	181.33	324.60	24.38%	228.00	7.65%	-8.89%	-51.00%
ETERNAL	301.95	-3.30	-1.08%	148.20	449.69	314.45	3.98%	194.80	55.01%	16.78%	#VALUE!

Disclaimer / Disclosures

ANALYST CERTIFICATION

I, Mrs. Vaishali Parekh B.com, Research Analyst, author and the name subscribed to this report, hereby certify that all of the views expressed in this research report accurately reflect our views about the subject issuer(s) or securities. We also certify that no part of our compensation was, is, or will be directly or indirectly related to the specific recommendation(s) or view(s) in this report.

Terms & conditions and other disclosures:

Prabhudas Lilladher Pvt. Ltd, Mumbai, India (hereinafter referred to as "PL") is engaged in the business of Stock Broking, Portfolio Manager, Depository Participant and distribution for third party financial products. PL is a subsidiary of Prabhudas Lilladher Advisory Services Pvt Ltd. which has its various subsidiaries engaged in business of commodity broking, investment banking, financial services (margin funding) and distribution of third party financial/other products, details in respect of which are available at www.plindia.com

This document has been prepared by the Research Division of PL and is meant for use by the recipient only as information and is not for circulation. This document is not to be reported or copied or made available to others without prior permission of PL. It should not be considered or taken as an offer to sell or a solicitation to buy or sell any security.

The information contained in this report has been obtained from sources that are considered to be reliable. However, PL has not independently verified the accuracy or completeness of the same. Neither PL nor any of its affiliates, its directors or its employees accepts any responsibility of whatsoever nature for the information, statements and opinion given, made available or expressed herein or for any omission therein.

Recipients of this report should be aware that past performance is not necessarily a guide to future performance and value of investments can go down as well. The suitability or otherwise of any investments will depend upon the recipient's particular circumstances and, in case of doubt, advice should be sought from an independent expert/advisor.

Either PL or its affiliates or its directors or its employees or its representatives or its clients or their relatives may have position(s), make market, act as principal or engage in transactions of securities of companies referred to in this report and they may have used the research material prior to publication.

PL may from time to time solicit or perform investment banking or other services for any company mentioned in this document.

PL is registered as Research Analyst under Securities and Exchange Board of India (Research Analysts) Regulations, 2014 PL submits that no material disciplinary action has been taken on us by any Regulatory Authority impacting Equity Research Analysis activities.

PL or its research analysts or its associates or his relatives do not have any financial interest in the subject company.

PL or its research analysts or its associates or his relatives do not have actual/beneficial ownership of one per cent or more securities of the subject company at the end of the month immediately preceding the date of publication of the research report.

PL or its research analysts or its associates or his relatives do not have any material conflict of interest at the time of publication of the research report.

PL or its associates might have received compensation from the subject company in the past twelve months.

PL or its associates might have managed or co-managed public offering of securities for the subject company in the past twelve months or mandated by the subject company for any other assignment in the past twelve months.

PL or its associates might have received any compensation for investment banking or merchant banking or brokerage services from the subject company in the past twelve months.

PL or its associates might have received any compensation for products or services other than investment banking or merchant banking or brokerage services from the subject company in the past twelve months PL or its associates might have received any compensation or other benefits from the subject company or third party in connection with the research report.

PL encourages independence in research report preparation and strives to minimize conflict in preparation of research report. PL or its analysts did not receive any compensation or other benefits from the subject Company or third party in connection with the preparation of the research report. PL or its Research Analysts do not have any material conflict of interest at the time of publication of this report.

It is confirmed that Mrs.Vaishali Parekh B.com, Research Analyst of this report has not received any compensation from the companies mentioned in the report in the preceding twelve months compensation of our Research Analysts is not based on any specific merchant banking, investment banking or brokerage service transactions.

The Research analysts for this report certifies that all of the views expressed in this report accurately reflect his or her personal views about the subject company or companies and its or their securities, and no part of his or her compensation was, is or will be, directly or indirectly related to specific recommendations or views expressed in this report.

The research analysts for this report has not served as an officer, director or employee of the subject company PL or its research analysts have not engaged in market making activity for the subject company

Our sales people, traders, and other professionals or affiliates may provide oral or written market commentary or trading strategies to our clients that reflect opinions that are contrary to the opinions expressed herein, and our proprietary trading and investing businesses may make investment decisions that are inconsistent with the recommendations expressed herein. In reviewing these materials, you should be aware that any or all of the foregoing, among other things, may give rise to real or potential conflicts of interest.

PL and its associates, their directors and employees may (a) from time to time, have a long or short position in, and buy or sell the securities of the subject company or (b) be engaged in any other transaction involving such securities and earn brokerage or other compensation or act as a market maker in the financial instruments of the subject company or act as an advisor or lender/borrower to the subject company or may have any other potential conflict of interests with respect to any recommendation and other related information and opinions.