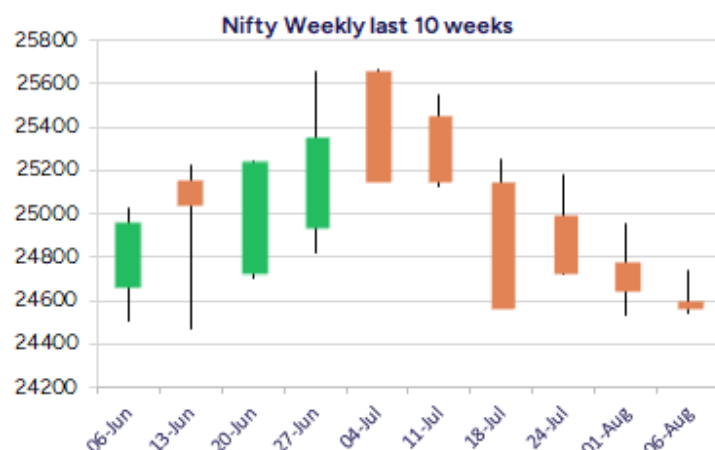
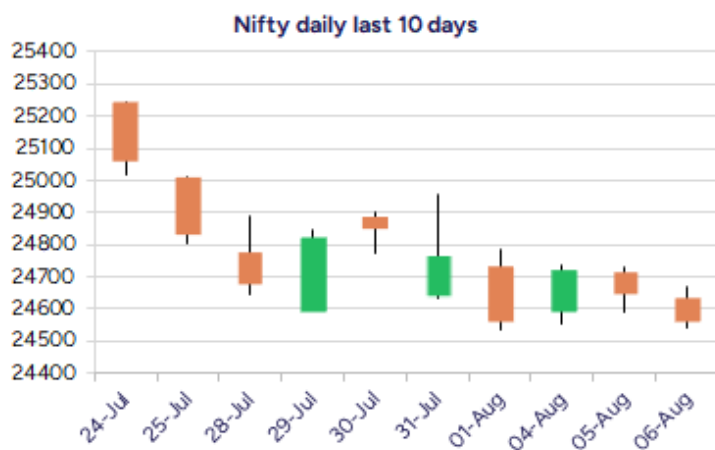


Date: 07<sup>th</sup> August 2025

\* Sensex 80543.99 -166.26

\* Nifty 24574.20 -75.35

\* Bank Nifty 55411.15 +50.90



\*Blue candle → Close rate > Open rate \* Red candle → Close rate < Open rate

## Market Preview

### Nifty at critical support near 24500 zone

Nifty managed to sustain above the important 24500 support zone during the intraday session with some volatility witnessed and bias maintained with a cautious approach. BankNifty sustained above the 55200 zone with narrow movement witnessed throughout the session to end on flat note. The market breadth was once again weak with the advance decline indicating a ratio of almost 1:3 at close.

## Market Forecast

### Nifty daily range 24450-24800

Nifty witnessed a slight volatile session holding on to the important support zone near the 24500 level, with bias and sentiment precariously placed and would need to check for further development which shall decide the future course of the trend. We continue to maintain our stance, with the crucial support positioned near the 24500 zone which needs to be sustained to maintain the overall trend intact and, on the upside, a decisive breach above the important 50EMA level at 24900 zone is much required.

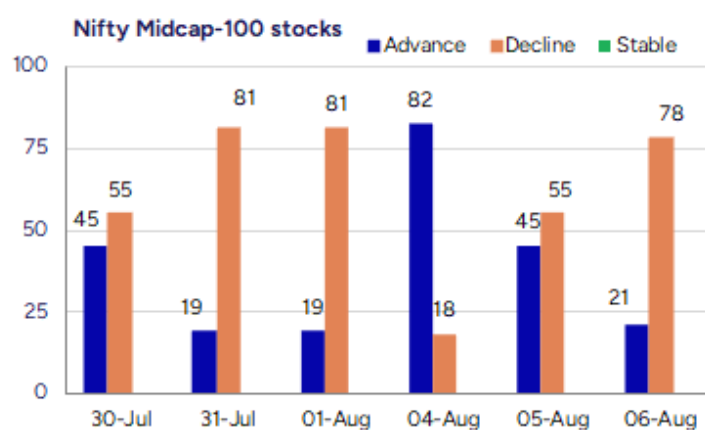
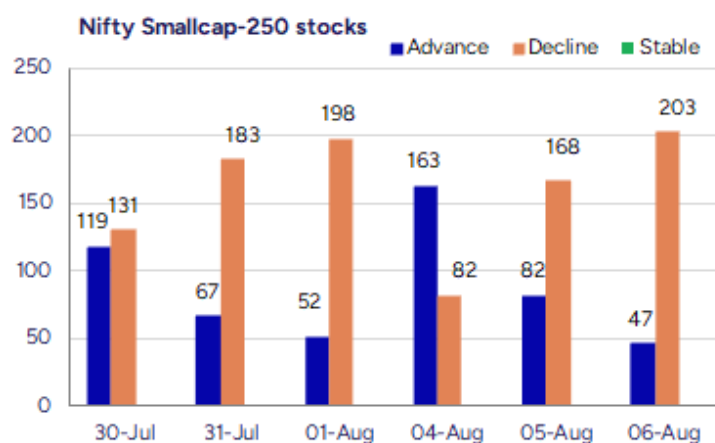
BankNifty, witnessed a rangebound session with 55200 zone sustained and closed in the green with a marginal gain indicating some hopes of a revival with HDFC Bank and ICICI Bank still maintained in their positive zone expecting for further improvement in the coming sessions. The index has got the important 100 period MA at 56700 level which would be the next near-term support zone and, on the upside, a decisive breach above the 50EMA zone at 56000 level would improve the bias, thereafter, expecting for further rise.

The support for the day is seen at 24450 levels while the resistance is seen at 24800 levels. BankNifty would have the daily range of 54800-56000 levels.

Indices	Period	Closing	% Chng	Trend	Reversal	2 Sup	1 Sup	Pivot	1 Res	2 Res
Nifty	Daily	24574.20	-0.31%	-2	24630.05	24463	24518	24595	24651	24727
	Weekly	24565.35	-1.09%	-4	25280.40	24266	24416	24686	24835	25106
	Monthly	24768.35	-2.93%	3	24708.35	23999	24384	24994	25379	25990
Bank Nifty	Daily	55411.15	0.09%	-9	55595.95	55068	55239	55399	55571	55731
	Weekly	55617.60	-1.61%	-4	57321.30	54901	55259	55918	56276	56935
	Monthly	55961.95	-2.36%	4	55173.20	54361	55162	56360	57160	58359
Sensex	Daily	80543.99	-0.21%	-2	80734.60	80223	80384	80609	80769	80995
	Weekly	80599.91	-1.06%	-4	82793.35	79663	80132	80967	81435	82270
	Monthly	81185.58	-2.90%	-1	81149.00	78601	79893	81912	83205	85224

**Gainers - Losers ( Nifty 500 Stocks )**

Gainers				Losers			
Company Name	Last Price	% Gain	Volume	Company Name	Last Price	% Loss	Volume
Sandesh	1390.2	19.52	104930	Muthoot Cap	267.3	-10.97	317301
Sumit Woods	95.59	16.52	314406	Radiant Cash	55.06	-9.74	937047
Zinka Logistics	561.25	15.66	21153782	Prostarm Info	202.6	-9.11	2149968
Transrail Light	794.65	12.6	27382475	Carraro India	438.5	-8.92	218424
Themis Medicare	113.51	11.24	5003360	Shree Pushkar	347.75	-8.82	342552
Aro Granite	41.29	10.67	279642	Ambey Labs	38.4	-8.57	6000
Ajmera Realty	913.1	10.26	1050873	Raymond Realty	665.1	-8.22	737675



## Nifty Daily chart with RSI indicator



## BankNifty Daily chart with RSI indicator



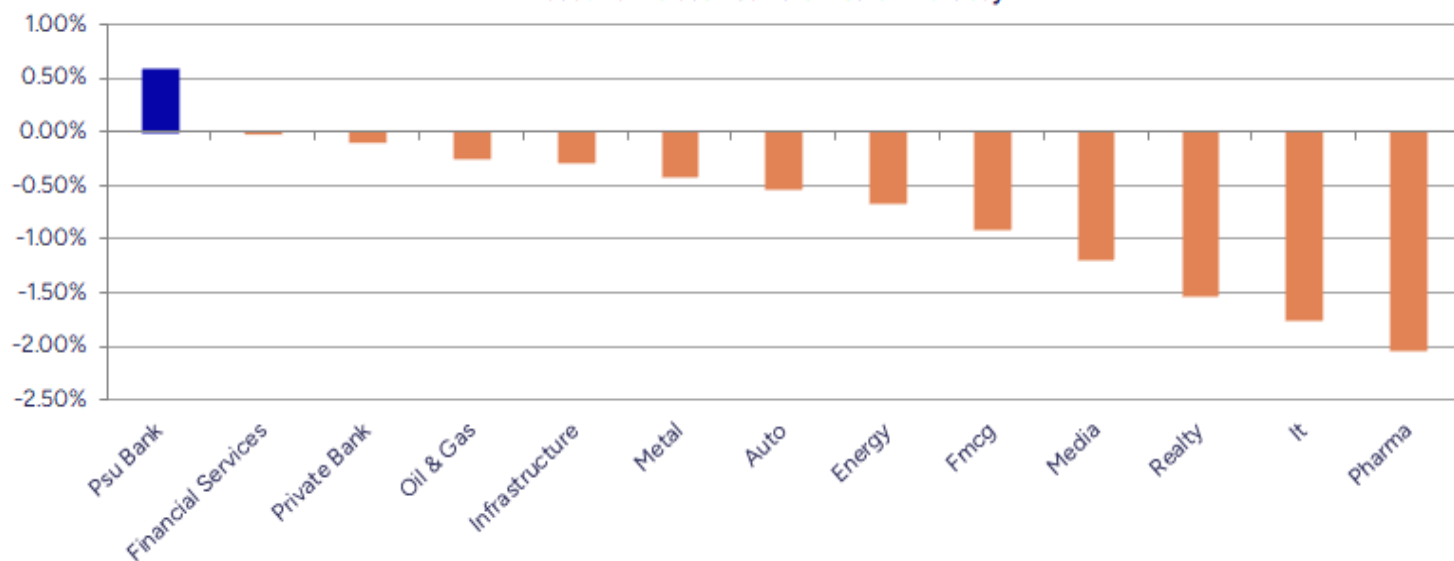
Breakouts - Cross above 200 DMA			
Company Name	LCP	Change %	200 DMA
Murudeshwar Cer	45.71	6.40	42.96
Sandesh	1390.2	4.27	1333.24
Kirloskar Oil	919.5	3.42	889.13
Reliance Power	47.46	3.22	45.98
Prudent Advisor	2626.9	2.09	2573.08
Anjani Portland	146.9	1.87	144.21
Steel City Secu	105.99	1.74	104.18
Delta	88.5	1.57	87.13
Banka Bioloo	87.18	1.55	85.85
Archidply Ind	104.07	1.51	102.52
La Opala RG	275.65	1.20	272.38
Azad Eng	1586.4	0.98	1571.02
Reliance Infra	295.05	0.97	292.22
Indigo Paints	1218.2	0.37	1213.7
Rajdarshan Ind	48.77	0.35	48.6
Kiri Industries	575.55	0.14	574.75
ICRA	6286	0.10	6279.76

\* Stocks crossing above its Simple Moving Average (200DMA)

Breakdown - Cross below 200 DMA			
Company Name	LCP	Change %	200 DMA
Aditya Ultra	39.05	-4.29	40.8
Focus Lighting	102.35	-3.62	106.19
KN Agri	239.8	-3.08	247.43
Cantabil Retail	251.15	-2.81	258.41
Roto Pumps	84.89	-2.53	87.09
Metro	1145.3	-2.53	1174.99
Ramco System	379.75	-2.50	389.49
Tainwala Chem	237.92	-2.41	243.79
Antony Waste	594.6	-2.34	608.84
TCI Finance	13.57	-2.30	13.89
Greenply Ind	302.25	-2.11	308.75
PC Jeweller	14	-2.10	14.3
COFORGE LTD.	1638.3	-2.10	1673.42
Canarys Automat	32.65	-1.83	33.26
Softtech Engine	381.05	-1.72	387.71
Elecon Eng	561.9	-1.46	570.24
Firstsource Sol	351.4	-1.34	356.17
Zydus Life	932.7	-1.30	944.98

\* Stocks crossing below its Simple Moving Average (200DMA)

Sectoral Indices - Gainers Losers for the day



Stocks witnessing a volume surge as compared to their 5 day average volume

Watch out for the stocks that have seen a huge spurt in its share price over the last three days

Volume Shockers - NSE					
Company name	LCP	% Chg	Volume	Avg Vol *	% Chg
Sandesh	1395.8	20	1035	6140	64601
Kirloskar Oil	905.05	4.62	103937	3793	4046621
Themis Medicare	113.5	11.23	108113	3525	3918746
Sundaram-Clayto	1804.8	-5.01	3063	3353	105768
BGR Energy	112.06	4.99	26210	3049	825368
Jet Freight Log	13.68	1.48	35189	2407	882066
BEW Engineering	159.9	3.19	1125	2033	24000
Centum Electron	2329.5	9.94	10680	1929	216699
Bedmutha Ind	143.61	1.21	10804	1898	215882
Adani Trans	790.7	-1.42	884100	1568	14745881
Nagreeka Export	26.93	10.28	9315	1336	133764
Mazda	295.05	1.83	34162	1299	477946
HEC Infra Proje	142.18	-5	4268	1293	59466
Muthoot Cap	268.55	-10.56	20895	1186	268791
Saregama India	494.7	2.89	280721	1159	3534811
Krishna Institu	762.75	2.98	59456	1122	726617
ITI	300.75	3.85	141626	1096	1693443
Rossell India	71.31	4.99	18185	1065	211817
Winsome Yarns	1.82	-2.15	11858	1024	133254
Avalon Technolo	887.9	3.79	201210	981	2175683

\* the Average Volume of last 5 days

Price Shockers - NSE				
Company name	LCP	Prv Close	% Chg	Volume
Sarda Energy	581.75	439.3	32.43	21117465
Godfrey Phillip	10854.5	8777	23.67	1406650
Sandesh	1390.2	1151.8	20.7	104930
Zuari Agro Chem	363	306.25	18.53	3823765
Sri Adhikari	1196.4	1033.55	15.76	2060
BGR Energy	112.06	96.81	15.75	828703
Blue Coast	58.44	50.49	15.75	65
Jainam Ferro	312.5	270	15.74	9500
Ujaas Energy	339.95	293.75	15.73	131
Ortin Global	18.03	15.6	15.58	325507
United Polyfab	36.35	31.52	15.32	231904
Sejal Glass	570.45	495.9	15.03	18081
Mirc Electronic	17.44	15.22	14.59	1439630
Times Guaranty	301.65	263.65	14.41	19773
Aro Granite	41.29	36.16	14.19	279642
Newgen Software	932.15	818.15	13.93	9111760
Xtglobal	37.87	33.31	13.69	234509
Sumit Woods	95.59	84.09	13.68	314406
Prakash Ind	185.78	164.3	13.07	3832126
Tribhovandas	214.77	191.53	12.13	1602739

\* the % price rise of the last 3 days

Nifty 50 stocks - Summary Details											
Symbol	LTP	Chng	% Chng	Volume (lacs)	Turnover (crs.)	52w High	Diff with 52w H	52w Low	Diff with 52w L	365 days % chng	30 days % chng
NIFTY 50	24574.20	-75.35	-0.31%	2250.82	20558.52	26277.35	6.48%	21743.65	13.02%	-3.19%	2.47%
ADANIENT	2300.00	-28.20	-1.21%	6.32	145.98	3242.65	29.07%	2025.00	13.58%	-10.42%	-23.37%
ADANIPTS	1366.90	8.80	0.65%	22.93	314.30	1563.45	12.57%	995.65	37.29%	-4.65%	-9.09%
APOLLOHOSP	7180.50	-93.50	-1.29%	2.97	213.94	7635.00	5.95%	6001.00	19.66%	-3.70%	8.77%
ASIANPAINT	2484.10	47.30	1.94%	20.19	502.08	3394.90	26.83%	2124.75	16.91%	0.52%	-21.23%
AXISBANK	1068.90	-1.90	-0.18%	42.17	452.06	1281.65	16.60%	933.50	14.50%	-9.07%	-5.53%
BAJAJ-AUTO	8175.00	-55.50	-0.67%	5.16	424.11	12774.00	36.00%	7089.35	15.31%	-2.40%	-13.23%
BAJAJFINSV	1926.00	-13.40	-0.69%	8.76	168.66	2135.00	9.79%	1523.25	26.44%	-2.76%	23.71%
BAJFINANCE	876.95	-14.95	-1.68%	42.12	371.10	978.80	10.41%	642.50	36.49%	-3.61%	-86.48%
BEL	389.30	2.65	0.69%	168.51	656.50	436.00	10.71%	240.25	62.04%	-9.57%	33.21%
BHARTIARTL	1924.00	-7.80	-0.40%	54.61	1059.02	2045.80	5.95%	1422.60	35.25%	-4.23%	31.80%
CIPLA	1485.00	-14.80	-0.99%	11.57	171.67	1702.05	12.75%	1335.00	11.24%	-0.89%	-1.01%
COALINDIA	376.50	2.50	0.67%	58.08	218.40	543.55	30.73%	349.25	7.80%	-1.71%	-25.12%
DRREDDY	1193.50	-21.30	-1.75%	17.02	203.74	1421.49	16.04%	1020.00	17.01%	-7.08%	-82.17%
EICHERMOT	5665.50	-15.50	-0.27%	2.03	115.01	5906.50	4.08%	4508.75	25.66%	0.92%	21.50%
GRASIM	2764.00	-33.20	-1.19%	3.94	109.27	2896.00	4.56%	2276.95	21.39%	-0.31%	7.08%
HCLTECH	1459.90	-22.80	-1.54%	17.36	254.45	2012.20	27.45%	1302.75	12.06%	-14.09%	-5.10%
HDFCBANK	1987.00	9.40	0.48%	70.40	1392.78	2037.70	2.49%	1593.30	24.71%	-0.59%	22.40%
HDFCLIFE	752.40	13.90	1.88%	17.98	134.30	820.75	8.33%	584.30	28.77%	-5.94%	3.88%
HEROMOTOCO	4470.10	-76.70	-1.69%	5.74	257.81	6246.25	28.44%	3344.00	33.68%	4.64%	-12.29%
HINDALCO	684.00	-3.10	-0.45%	24.99	171.83	772.65	11.47%	546.45	25.17%	-1.77%	11.85%
HINDUNILVR	2540.00	5.30	0.21%	8.85	224.84	3035.00	16.31%	2136.00	18.91%	8.35%	-6.67%
ICICIBANK	1443.50	-0.90	-0.06%	78.05	1129.02	1500.00	3.77%	1153.00	25.20%	0.11%	23.18%
INDUSINDBK	803.00	-16.15	-1.97%	52.50	423.22	1498.00	46.40%	606.00	32.51%	-4.33%	-41.05%
INFY	1433.00	-27.30	-1.87%	105.67	1522.04	2006.45	28.58%	1307.00	9.64%	-11.00%	-16.64%
ITC	412.20	-1.95	-0.47%	90.80	373.86	528.50	22.01%	390.15	5.65%	0.39%	-14.78%
JIOFIN	326.00	-6.85	-2.06%	116.13	381.64	363.00	10.19%	198.65	64.11%	2.43%	4.98%
JSWSTEEL	1054.60	1.20	0.11%	17.98	189.21	1074.90	1.89%	854.15	23.47%	1.15%	21.95%
KOTAKBANK	2003.90	0.90	0.04%	26.62	534.18	2301.90	12.95%	1679.05	19.35%	-5.95%	12.93%
LT	3633.00	-19.60	-0.54%	9.31	338.79	3963.50	8.34%	2965.30	22.52%	1.61%	3.53%
M&M	3240.10	27.90	0.87%	18.66	599.53	3303.00	1.90%	2425.00	33.61%	1.57%	19.91%
MARUTI	12510.00	-27.00	-0.22%	1.52	190.07	13541.65	7.62%	10725.00	16.64%	-0.86%	2.76%
NESTLEIND	2236.00	-31.30	-1.38%	5.64	126.37	2778.00	19.51%	2110.00	5.97%	-5.24%	-9.70%
NTPC	332.55	-1.05	-0.31%	138.73	463.17	448.45	25.84%	292.80	13.58%	-0.57%	-19.27%
ONGC	234.00	-0.48	-0.20%	75.69	177.07	345.00	32.17%	205.00	14.15%	-4.39%	-24.42%
POWERGRID	284.80	-1.20	-0.42%	129.85	370.39	366.25	22.24%	247.30	15.16%	-2.72%	-16.57%
RELIANCE	1393.00	1.30	0.09%	58.34	811.28	1551.00	10.19%	1114.85	24.95%	-8.88%	-51.92%
SBILIFE	1855.80	-1.20	-0.06%	8.16	151.85	1936.00	4.14%	1372.55	35.21%	3.18%	7.83%
SBIN	804.80	4.20	0.52%	74.09	595.99	875.45	8.07%	680.00	18.35%	-1.39%	-1.36%
SHRIRAMFIN	630.00	-0.10	-0.02%	47.64	300.42	730.45	13.75%	493.35	27.70%	-6.81%	-78.21%
SUNPHARMA	1593.50	-38.60	-2.37%	23.76	382.67	1960.35	18.71%	1553.05	2.60%	-2.64%	-5.13%
TATACONSUM	1052.60	-12.00	-1.13%	5.98	63.34	1234.30	14.72%	882.90	19.22%	-2.30%	-11.24%
TATAMOTORS	653.20	-1.40	-0.21%	64.11	419.08	1142.00	42.80%	535.75	21.92%	-5.00%	-35.60%
TATASTEEL	158.70	-0.92	-0.58%	134.38	213.10	170.18	6.75%	122.62	29.42%	-2.08%	6.54%
TCS	3031.60	-32.30	-1.05%	14.87	451.61	4592.25	33.98%	2991.60	1.34%	-10.41%	-26.26%
TECHM	1455.00	-30.40	-2.05%	10.40	152.58	1807.70	19.51%	1209.40	20.31%	-10.26%	1.99%
TITAN	3400.00	-18.20	-0.53%	6.35	218.32	3867.00	12.08%	2925.00	16.24%	-7.29%	1.25%
TRENT	5335.00	17.50	0.33%	24.87	1338.52	8345.00	36.07%	4488.00	18.87%	-2.54%	-0.55%
ULTRACEMCO	12215.00	-83.00	-0.67%	1.92	236.20	12714.00	3.92%	10047.85	21.57%	-1.66%	7.71%
WIPRO	239.75	-6.16	-2.50%	77.00	185.74	324.60	26.14%	228.00	5.15%	-8.94%	-49.30%
ETERNAL	300.05	-2.10	-0.70%	220.11	657.36	314.45	4.58%	194.80	54.03%	15.59%	#VALUE!

## Disclaimer / Disclosures

### ANALYST CERTIFICATION

I, Mrs. Vaishali Parekh B.com, Research Analyst, author and the name subscribed to this report, hereby certify that all of the views expressed in this research report accurately reflect our views about the subject issuer(s) or securities. We also certify that no part of our compensation was, is, or will be directly or indirectly related to the specific recommendation(s) or view(s) in this report.

Terms & conditions and other disclosures:

Prabhudas Lilladher Pvt. Ltd, Mumbai, India (hereinafter referred to as "PL") is engaged in the business of Stock Broking, Portfolio Manager, Depository Participant and distribution for third party financial products. PL is a subsidiary of Prabhudas Lilladher Advisory Services Pvt Ltd. which has its various subsidiaries engaged in business of commodity broking, investment banking, financial services (margin funding) and distribution of third party financial/other products, details in respect of which are available at [www.plindia.com](http://www.plindia.com)

This document has been prepared by the Research Division of PL and is meant for use by the recipient only as information and is not for circulation. This document is not to be reported or copied or made available to others without prior permission of PL. It should not be considered or taken as an offer to sell or a solicitation to buy or sell any security.

The information contained in this report has been obtained from sources that are considered to be reliable. However, PL has not independently verified the accuracy or completeness of the same. Neither PL nor any of its affiliates, its directors or its employees accepts any responsibility of whatsoever nature for the information, statements and opinion given, made available or expressed herein or for any omission therein.

Recipients of this report should be aware that past performance is not necessarily a guide to future performance and value of investments can go down as well. The suitability or otherwise of any investments will depend upon the recipient's particular circumstances and, in case of doubt, advice should be sought from an independent expert/advisor.

Either PL or its affiliates or its directors or its employees or its representatives or its clients or their relatives may have position(s), make market, act as principal or engage in transactions of securities of companies referred to in this report and they may have used the research material prior to publication.

PL may from time to time solicit or perform investment banking or other services for any company mentioned in this document.

PL is registered as Research Analyst under Securities and Exchange Board of India (Research Analysts) Regulations, 2014 PL submits that no material disciplinary action has been taken on us by any Regulatory Authority impacting Equity Research Analysis activities.

PL or its research analysts or its associates or his relatives do not have any financial interest in the subject company.

PL or its research analysts or its associates or his relatives do not have actual/beneficial ownership of one per cent or more securities of the subject company at the end of the month immediately preceding the date of publication of the research report.

PL or its research analysts or its associates or his relatives do not have any material conflict of interest at the time of publication of the research report.

PL or its associates might have received compensation from the subject company in the past twelve months.

PL or its associates might have managed or co-managed public offering of securities for the subject company in the past twelve months or mandated by the subject company for any other assignment in the past twelve months.

PL or its associates might have received any compensation for investment banking or merchant banking or brokerage services from the subject company in the past twelve months.

PL or its associates might have received any compensation for products or services other than investment banking or merchant banking or brokerage services from the subject company in the past twelve months PL or its associates might have received any compensation or other benefits from the subject company or third party in connection with the research report.

PL encourages independence in research report preparation and strives to minimize conflict in preparation of research report. PL or its analysts did not receive any compensation or other benefits from the subject Company or third party in connection with the preparation of the research report. PL or its Research Analysts do not have any material conflict of interest at the time of publication of this report.

It is confirmed that Mrs.Vaishali Parekh B.com, Research Analyst of this report has not received any compensation from the companies mentioned in the report in the preceding twelve months compensation of our Research Analysts is not based on any specific merchant banking, investment banking or brokerage service transactions.

The Research analysts for this report certifies that all of the views expressed in this report accurately reflect his or her personal views about the subject company or companies and its or their securities, and no part of his or her compensation was, is or will be, directly or indirectly related to specific recommendations or views expressed in this report.

The research analysts for this report has not served as an officer, director or employee of the subject company PL or its research analysts have not engaged in market making activity for the subject company

Our sales people, traders, and other professionals or affiliates may provide oral or written market commentary or trading strategies to our clients that reflect opinions that are contrary to the opinions expressed herein, and our proprietary trading and investing businesses may make investment decisions that are inconsistent with the recommendations expressed herein. In reviewing these materials, you should be aware that any or all of the foregoing, among other things, may give rise to real or potential conflicts of interest.

PL and its associates, their directors and employees may (a) from time to time, have a long or short position in, and buy or sell the securities of the subject company or (b) be engaged in any other transaction involving such securities and earn brokerage or other compensation or act as a market maker in the financial instruments of the subject company or act as an advisor or lender/borrower to the subject company or may have any other potential conflict of interests with respect to any recommendation and other related information and opinions.