

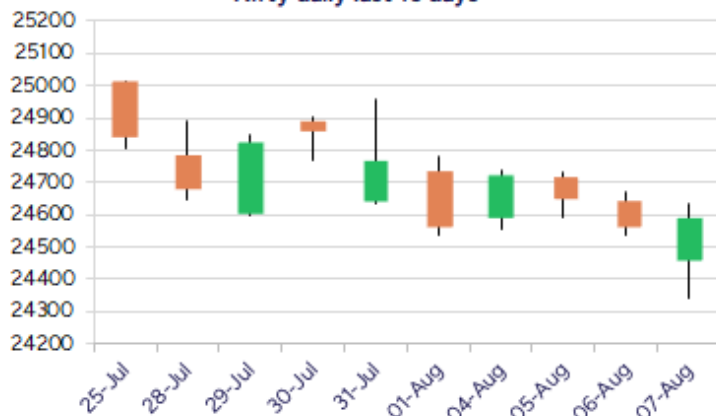
Date: 08th August 2025

* Sensex 80623.26 + 79.27

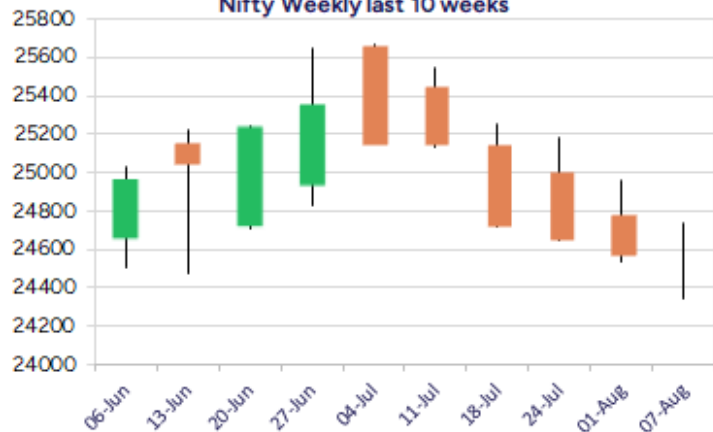
* Nifty 24596.15 + 21.95

* Bank Nifty 55521.15 + 110.00

Nifty daily last 10 days



Nifty Weekly last 10 weeks



*Blue candle → Close rate > Open rate * Red candle → Close rate < Open rate

Market Preview

Nifty sustains the 24500 zone amid volatility

Nifty managed to stay above the crucial support of 24500 zone amid high turbulence during the intraday session with bias maintained with a cautious approach. BankNifty witnessed a strong bounce back in the final hours recovering to 55500 zone and keeping the hopes alive for further upside move. The market breadth was overall flat with the advance decline indicating a neutral ratio at close.

Market Forecast

Nifty daily range 24450-24800

Nifty witnessed a weak session sliding below the important support zone at 24500 level to touch the intraday low of 24345 level from where a robust pullback erasing the loss, closed marginally in the green above the 24500 level to keep hopes alive and anticipate for further improvement. As we have been mentioning, the bias and sentiment is precariously placed and would need to check for further development which shall decide the future course of the trend. The 200 period MA at 24000 level would be the major support if the 24500 zone is decisively breached below weakening the bias.

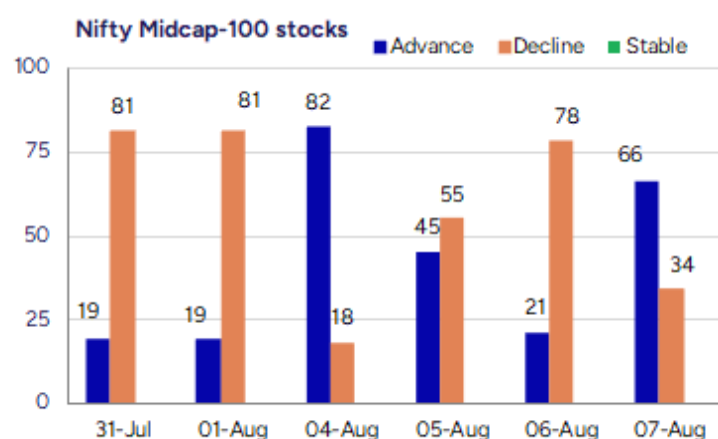
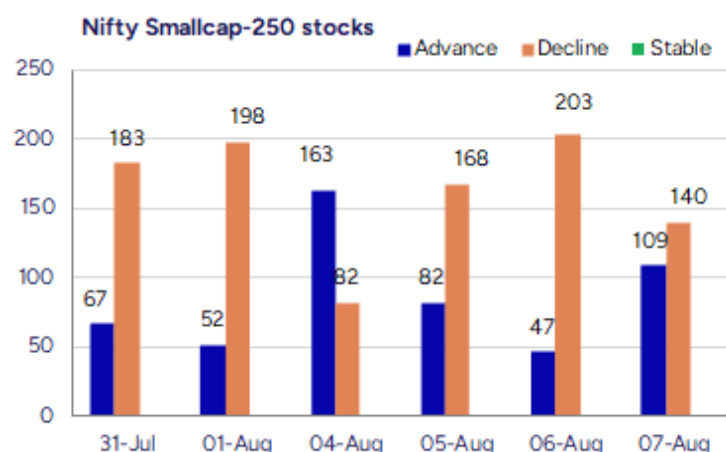
BankNifty, after the initial slide, witnessed a decent recovery from the 55000 zone to end the session in the green near 55500 zone with bias maintained with a cautious approach. As said earlier, the index has got the important 100 period MA at 54800 level which would be the near-term support zone and, on the upside, a decisive breach above the 50EMA zone at 56000 level would improve the bias, thereafter, expecting for further rise.

The support for the day is seen at 24450 levels while the resistance is seen at 24800 levels. BankNifty would have the daily range of 54800-56000 levels.

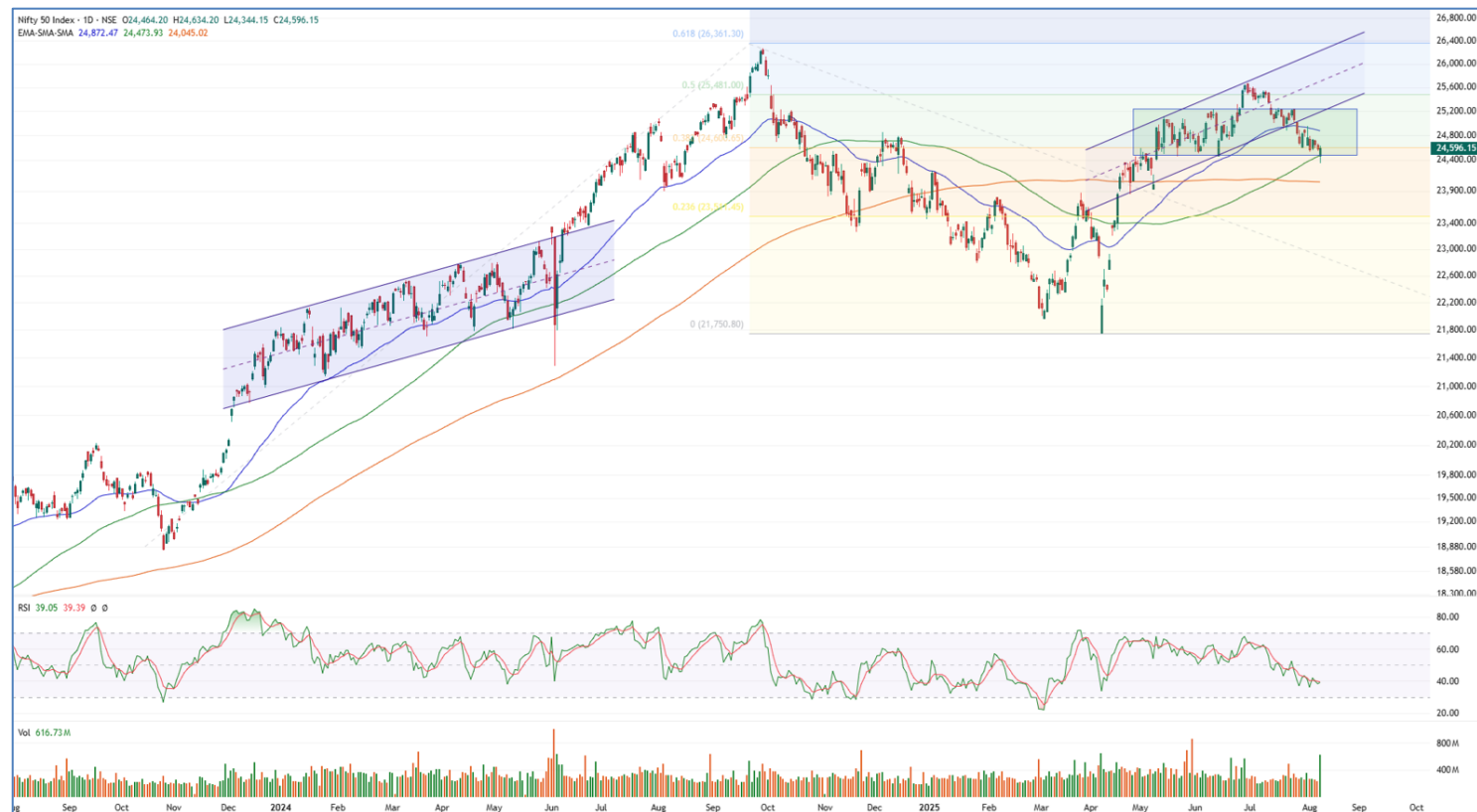
Indices	Period	Closing	% Chng	Trend	Reversal	2 Sup	1 Sup	Pivot	1 Res	2 Res
Nifty	Daily	24596.15	0.09%	-3	24617.30	24235	24415	24525	24706	24815
	Weekly	24565.35	-1.09%	-4	25280.40	24266	24416	24686	24835	25106
	Monthly	24768.35	-2.93%	3	24708.35	23999	24384	24994	25379	25990
Bank Nifty	Daily	55521.15	0.20%	-10	55544.35	54729	55125	55370	55766	56011
	Weekly	55617.60	-1.61%	-4	57321.30	54901	55259	55918	56276	56935
	Monthly	55961.95	-2.36%	4	55173.20	54361	55162	56360	57160	58359
Sensex	Daily	80623.26	0.10%	-3	80694.05	79464	80044	80391	80970	81317
	Weekly	80599.91	-1.06%	-4	82793.35	79663	80132	80967	81435	82270
	Monthly	81185.58	-2.90%	-1	81149.00	78601	79893	81912	83205	85224

Gainers - Losers (Nifty 500 Stocks)

Gainers				Losers			
Company Name	Last Price	% Gain	Volume	Company Name	Last Price	% Loss	Volume
Laxmi India Fin	148.62	20	9904166	Lumax Inds	3386	-11.18	66999
Manglam Infra	23.85	16.34	160000	Igarashi Motors	560.95	-10.05	336885
BLB	17.19	14.6	1839175	Lumax Auto Tech	1039.1	-10.03	452634
IZMO	410.7	14.08	1310101	Megastar Foods	239.05	-9.67	36930
Lincoln Pharma	601.1	13.17	4680743	Tribhovandas	195.33	-9.05	1905161
Rappid Valves	329.05	12.3	25800	GPT Healthcare	162.44	-8.96	2214432
Diligent Media	5.47	11.86	5020997	Plada Infotech	22.55	-8.89	9000



Nifty Daily chart with RSI indicator



BankNifty Daily chart with RSI indicator

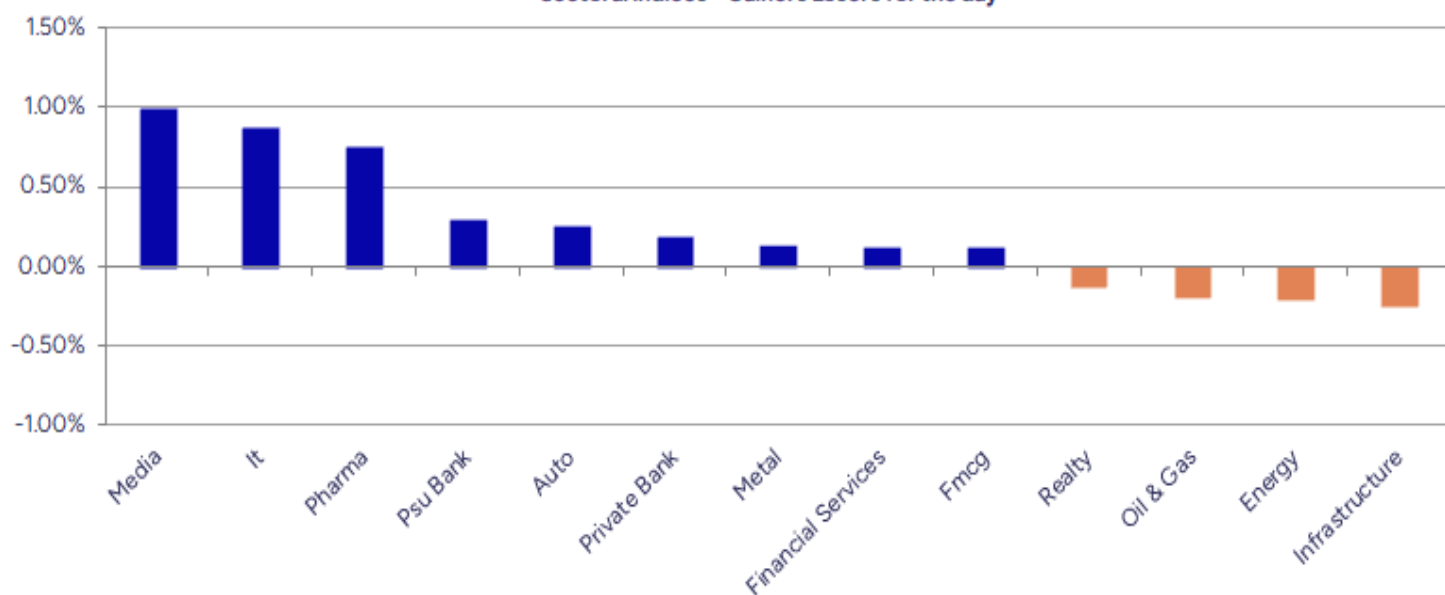


Breakouts - Cross above 200 DMA				Breakdown - Cross below 200 DMA			
Company Name	LCP	Change %	200 DMA	Company Name	LCP	Change %	200 DMA
IZMO	410.7	7.24	382.97	Tribhovandas	195.33	-6.25	208.36
ITI	320.3	6.42	300.99	Igarashi Motors	560.95	-5.72	595.01
Sathlokhar Syne	454.7	4.73	434.18	MTAR	1488.6	-3.99	1550.47
Cool Caps	83.25	4.30	79.82	Reliance Infra	281.3	-3.77	292.31
Firstsource Sol	369.85	3.82	356.23	Orient Abrasive	39.32	-3.25	40.64
Gopal Snacks	363.4	3.77	350.21	Sunlite Recycli	143	-2.95	147.35
Cigniti Tech	1610.3	3.66	1553.43	La Opala RG	264.25	-2.83	271.96
Global Educatio	65.28	3.59	63.02	Emami	582.2	-2.49	597.08
Ent Network Ind	160.84	3.10	156	Supreme Infra	109.44	-2.28	111.99
Oswal ChemandFe	45.45	2.41	44.38	Reliance Power	45.12	-1.93	46.01
Kirloskar Bros	1965.3	2.23	1922.49	Precot	510.1	-1.86	519.78
DEE Development	277.65	1.93	272.4	ICRA	6159	-1.85	6275.05
Veranda Learnin	234.79	1.79	230.66	Ashiana Housing	310.3	-1.68	315.6
COFORGE LTD.	1704.1	1.78	1674.35	West Coast Pap	500.7	-1.52	508.44
Divine Power	132.6	1.68	130.41	A G Universal	54.7	-1.48	55.52
Sahyadri Ind	296.3	1.43	292.13	Expleo Solution	1125.8	-1.47	1142.58
PB Fintech	1773.9	1.38	1749.76	Rattan Power	12.09	-1.23	12.24
Greenply Ind	312.45	1.34	308.32	Ramky Infra	537.7	-1.04	543.34

* Stocks crossing above its Simple Moving Average (200DMA)

* Stocks crossing below its Simple Moving Average (200DMA)

Sectoral Indices - Gainers Losers for the day



Stocks witnessing a volume surge as compared to their 5 day average volume

Watch out for the stocks that have seen a huge spurt in its share price over the last three days

Volume Shockers - NSE					
Company name	LCP	% Chg	Volume	Avg Vol *	% Chg
Lincoln Pharma	596.05	12.22	1552073	19413	7895
IZMO	404.6	12.39	1061566	27597	3747
Rain Industries	164.6	8.2	35254351	977642	3506
Yaari Digital	15.96	5	415840	17274	2307
ITI	321.5	7.33	10811378	489943	2107
Cool Caps	82.25	3.2	180000	8400	2043
Manglam Infra	23.65	15.37	156000	9600	1525
Sigachi Ind	32.16	-6.94	16056370	1046438	1434
Prism Johnson	149	2.19	1771463	115646	1432
Tasty Bite	10825	1.35	37000	2706	1268
Indraprastha	461.9	3.87	1474572	114591	1187
Atlanta	35.17	6.19	152276	12055	1163
BEW Engineering	164	2.53	14000	1125	1144
Forcas Studio	106	0.05	99200	8000	1140
Savita Oil Tech	442.5	10.92	289998	23415	1139
Sapphire Foods	313.25	2.65	850279	68650	1139
Sanghvi Movers	283.15	3.25	3640894	315983	1052
Avalon Technolo	947.8	7.83	2259262	201210	1023
Shree Tirupati	480	-2.04	25000	2525	890
Caplin Labs	2005.8	3.95	661487	72719	810

* the Average Volume of last 5 days

Price Shockers - NSE				
Company name	LCP	Prv Close	% Chg	Volume
BGR Energy	123.26	101.65	21.26	362767
Sandesh	1344.8	1158.6	16.07	30897
Sri Adhikari	1256.2	1085.2	15.76	10516
Blue Coast	61.36	53.01	15.75	16956
United Polyfab	38.16	32.98	15.71	181104
Banka Biolo	90.69	79.08	14.68	47865
Ujaas Energy	353.65	308.4	14.67	6955
IZMO	410.7	359.4	14.27	1310525
BLB	17.19	15.1	13.84	1839180
Sumit Woods	95.07	83.67	13.62	195382
Manglam Infra	23.85	21	13.57	160000
Lincoln Pharma	601.1	531.6	13.07	4680823
Ginni Filaments	52.43	46.65	12.39	75553
Themis Medicare	115.01	102.58	12.12	737841
Shri Rama Multi	45.59	40.83	11.66	1752982
Godfrey Phillip	9998.5	8983.5	11.3	1029231
Centum Electron	2405.9	2165.8	11.09	64497
Prakash Ind	185.43	167.19	10.91	1792620
Sejal Glass	576.85	520.65	10.79	18694
Kamat Hotels	268.41	242.76	10.57	403401

* the % price rise of the last 3 days

Nifty 50 stocks - Summary Details											
Symbol	LTP	Chng	% Chng	Volume (lacs)	Turnover (crs.)	52w High	Diff with 52w H	52w Low	Diff with 52w L	365 days % chng	30 days % chng
NIFTY 50	24596.15	21.95	0.09%	6167.34	35573.70	26277.35	6.40%	21743.65	13.12%	-3.48%	2.42%
ADANIENT	2245.90	-54.40	-2.36%	15.29	343.20	3242.65	30.74%	2025.00	10.91%	-10.71%	-25.14%
ADANIPTS	1347.50	-19.60	-1.43%	28.57	381.16	1556.00	13.40%	995.65	35.34%	-4.77%	-8.50%
APOLLOHOSP	7188.50	-1.00	-0.01%	4.08	290.96	7635.00	5.85%	6001.00	19.79%	-5.60%	7.99%
ASIANPAINT	2508.00	16.80	0.67%	15.03	374.30	3394.90	26.12%	2124.75	18.04%	1.98%	-19.68%
AXISBANK	1079.70	8.70	0.81%	53.21	569.40	1281.65	15.76%	933.50	15.66%	-8.86%	-4.89%
BAJAJ-AUTO	8241.00	62.50	0.76%	4.56	370.55	12774.00	35.49%	7089.35	16.24%	-3.37%	-13.25%
BAJAJFINSV	1920.90	-3.10	-0.16%	9.05	172.77	2135.00	10.03%	1523.25	26.11%	-4.11%	23.01%
BAJFINANCE	881.90	5.25	0.60%	59.98	524.16	978.80	9.90%	642.50	37.26%	-5.19%	-86.59%
BEL	388.25	-1.45	-0.37%	115.20	445.56	436.00	10.95%	240.25	61.60%	-6.57%	35.67%
BHARTIARTL	1920.10	-9.60	-0.50%	42.68	819.18	2045.80	6.14%	1422.60	34.97%	-5.12%	33.68%
CIPLA	1490.00	3.30	0.22%	18.82	277.93	1702.05	12.46%	1335.00	11.61%	-1.58%	-2.95%
COALINDIA	379.00	2.15	0.57%	34.68	130.81	543.55	30.27%	349.25	8.52%	-1.93%	-24.57%
DRREDDY	1198.00	1.30	0.11%	12.47	148.55	1421.49	15.72%	1020.00	17.45%	-8.68%	-82.42%
EICHERMOT	5676.50	8.50	0.15%	2.67	150.45	5906.50	3.89%	4508.75	25.90%	-0.26%	21.79%
GRASIM	2741.90	-23.90	-0.86%	5.92	162.17	2896.00	5.32%	2276.95	20.42%	-0.48%	5.54%
HCLTECH	1479.10	15.90	1.09%	14.95	218.76	2012.20	26.49%	1302.75	13.54%	-14.45%	-7.55%
HDFCBANK	1998.00	12.70	0.64%	65.40	1298.93	2037.70	1.95%	1593.30	25.40%	-0.11%	23.99%
HDFCLIFE	757.05	4.50	0.60%	14.23	107.25	820.75	7.76%	584.30	29.57%	-4.67%	10.73%
HEROMOTOCO	4666.10	191.20	4.27%	21.21	970.77	6246.25	25.30%	3344.00	39.54%	3.90%	-13.51%
HINDALCO	689.65	4.80	0.70%	34.17	233.33	772.65	10.74%	546.45	26.21%	-1.05%	12.22%
HINDUNILVR	2516.00	-19.60	-0.77%	8.47	212.97	3035.00	17.10%	2136.00	17.79%	5.19%	-7.80%
ICICIBANK	1441.00	-2.60	-0.18%	74.32	1067.08	1500.00	3.93%	1153.00	24.98%	0.55%	23.72%
INDUSINDBK	808.60	5.25	0.65%	25.53	204.34	1498.00	46.02%	606.00	33.43%	-5.98%	-41.83%
INFY	1441.00	4.30	0.30%	98.92	1413.35	2006.45	28.18%	1307.00	10.25%	-11.70%	-17.95%
ITC	413.80	1.80	0.44%	115.14	475.93	528.50	21.70%	390.15	6.06%	-1.00%	-15.28%
JIOFIN	327.40	0.85	0.26%	164.62	530.38	363.00	9.81%	198.65	64.81%	-0.46%	4.88%
JSWSTEEL	1073.00	20.40	1.94%	18.38	194.06	1074.90	0.18%	867.05	23.75%	0.96%	19.07%
KOTAKBANK	1994.20	-8.20	-0.41%	145.52	2866.78	2301.90	13.37%	1679.05	18.77%	-6.86%	13.09%
LT	3641.80	13.40	0.37%	12.12	438.07	3963.50	8.12%	2965.30	22.81%	1.31%	1.46%
M&M	3206.00	-21.50	-0.67%	23.75	760.72	3303.00	2.94%	2425.00	32.21%	2.13%	22.58%
MARUTI	12625.00	101.00	0.81%	1.73	217.55	13541.65	6.77%	10725.00	17.72%	0.03%	3.24%
NESTLEIND	2241.00	7.70	0.34%	5.07	113.07	2778.00	19.33%	2110.00	6.21%	-7.79%	-10.97%
NTPC	330.60	-1.50	-0.45%	87.31	288.17	448.45	26.28%	292.80	12.91%	-1.59%	-19.98%
ONGC	233.60	-0.17	-0.07%	55.59	129.48	345.00	32.29%	205.00	13.95%	-3.21%	-23.63%
POWERGRID	286.00	1.20	0.42%	88.94	253.38	366.25	21.91%	247.30	15.65%	-3.75%	-16.42%
RELIANCE	1391.00	-1.80	-0.13%	99.77	1378.29	1551.00	10.32%	1114.85	24.77%	-9.65%	-52.17%
SBILIFE	1860.00	5.70	0.31%	7.43	137.49	1936.00	3.93%	1372.55	35.51%	2.54%	10.74%
SBIN	805.60	0.45	0.06%	70.91	567.13	875.45	7.98%	680.00	18.47%	-0.21%	0.93%
SHRIRAMFIN	627.00	-3.60	-0.57%	34.83	217.33	730.45	14.16%	493.35	27.09%	-6.06%	-77.77%
SUNPHARMA	1599.50	4.30	0.27%	34.36	544.98	1960.35	18.41%	1553.05	2.99%	-5.04%	-6.58%
TATACONSUM	1052.20	-0.60	-0.06%	6.01	62.92	1234.30	14.75%	882.90	19.18%	-4.46%	-11.20%
TATAMOTORS	650.00	-2.85	-0.44%	136.10	873.03	1142.00	43.08%	535.75	21.33%	-5.23%	-35.60%
TATASTEEL	159.83	1.17	0.74%	231.59	365.73	170.18	6.08%	122.62	30.35%	-2.30%	5.55%
TCS	3049.10	16.80	0.55%	25.43	770.99	4592.25	33.60%	2991.60	1.92%	-11.12%	-27.30%
TECHM	1488.10	29.10	1.99%	15.87	233.19	1807.70	17.68%	1209.40	23.04%	-10.15%	-1.64%
TITAN	3402.00	-15.70	-0.46%	5.10	173.73	3867.00	12.02%	2925.00	16.31%	-6.78%	2.48%
TRENT	5316.00	-40.50	-0.76%	22.93	1222.79	8345.00	36.30%	4488.00	18.45%	-2.59%	2.60%
ULTRACEMCO	12292.00	66.00	0.54%	2.02	246.63	12714.00	3.32%	10047.85	22.33%	-0.96%	7.95%
WIPRO	242.80	2.84	1.18%	61.91	148.84	324.60	25.20%	228.00	6.49%	-10.38%	-50.98%
ETERNAL	303.20	4.35	1.46%	3915.49	11475.12	314.45	3.58%	194.80	55.65%	15.59%	#VALUE!

Disclaimer / Disclosures

ANALYST CERTIFICATION

I, Mrs. Vaishali Parekh B.com, Research Analyst, author and the name subscribed to this report, hereby certify that all of the views expressed in this research report accurately reflect our views about the subject issuer(s) or securities. We also certify that no part of our compensation was, is, or will be directly or indirectly related to the specific recommendation(s) or view(s) in this report.

Terms & conditions and other disclosures:

Prabhudas Lilladher Pvt. Ltd, Mumbai, India (hereinafter referred to as "PL") is engaged in the business of Stock Broking, Portfolio Manager, Depository Participant and distribution for third party financial products. PL is a subsidiary of Prabhudas Lilladher Advisory Services Pvt Ltd. which has its various subsidiaries engaged in business of commodity broking, investment banking, financial services (margin funding) and distribution of third party financial/other products, details in respect of which are available at www.plindia.com

This document has been prepared by the Research Division of PL and is meant for use by the recipient only as information and is not for circulation. This document is not to be reported or copied or made available to others without prior permission of PL. It should not be considered or taken as an offer to sell or a solicitation to buy or sell any security.

The information contained in this report has been obtained from sources that are considered to be reliable. However, PL has not independently verified the accuracy or completeness of the same. Neither PL nor any of its affiliates, its directors or its employees accepts any responsibility of whatsoever nature for the information, statements and opinion given, made available or expressed herein or for any omission therein.

Recipients of this report should be aware that past performance is not necessarily a guide to future performance and value of investments can go down as well. The suitability or otherwise of any investments will depend upon the recipient's particular circumstances and, in case of doubt, advice should be sought from an independent expert/advisor.

Either PL or its affiliates or its directors or its employees or its representatives or its clients or their relatives may have position(s), make market, act as principal or engage in transactions of securities of companies referred to in this report and they may have used the research material prior to publication.

PL may from time to time solicit or perform investment banking or other services for any company mentioned in this document.

PL is registered as Research Analyst under Securities and Exchange Board of India (Research Analysts) Regulations, 2014 PL submits that no material disciplinary action has been taken on us by any Regulatory Authority impacting Equity Research Analysis activities.

PL or its research analysts or its associates or his relatives do not have any financial interest in the subject company.

PL or its research analysts or its associates or his relatives do not have actual/beneficial ownership of one per cent or more securities of the subject company at the end of the month immediately preceding the date of publication of the research report.

PL or its research analysts or its associates or his relatives do not have any material conflict of interest at the time of publication of the research report.

PL or its associates might have received compensation from the subject company in the past twelve months.

PL or its associates might have managed or co-managed public offering of securities for the subject company in the past twelve months or mandated by the subject company for any other assignment in the past twelve months.

PL or its associates might have received any compensation for investment banking or merchant banking or brokerage services from the subject company in the past twelve months.

PL or its associates might have received any compensation for products or services other than investment banking or merchant banking or brokerage services from the subject company in the past twelve months PL or its associates might have received any compensation or other benefits from the subject company or third party in connection with the research report.

PL encourages independence in research report preparation and strives to minimize conflict in preparation of research report. PL or its analysts did not receive any compensation or other benefits from the subject Company or third party in connection with the preparation of the research report. PL or its Research Analysts do not have any material conflict of interest at the time of publication of this report.

It is confirmed that Mrs.Vaishali Parekh B.com, Research Analyst of this report has not received any compensation from the companies mentioned in the report in the preceding twelve months compensation of our Research Analysts is not based on any specific merchant banking, investment banking or brokerage service transactions.

The Research analysts for this report certifies that all of the views expressed in this report accurately reflect his or her personal views about the subject company or companies and its or their securities, and no part of his or her compensation was, is or will be, directly or indirectly related to specific recommendations or views expressed in this report.

The research analysts for this report has not served as an officer, director or employee of the subject company PL or its research analysts have not engaged in market making activity for the subject company

Our sales people, traders, and other professionals or affiliates may provide oral or written market commentary or trading strategies to our clients that reflect opinions that are contrary to the opinions expressed herein, and our proprietary trading and investing businesses may make investment decisions that are inconsistent with the recommendations expressed herein. In reviewing these materials, you should be aware that any or all of the foregoing, among other things, may give rise to real or potential conflicts of interest.

PL and its associates, their directors and employees may (a) from time to time, have a long or short position in, and buy or sell the securities of the subject company or (b) be engaged in any other transaction involving such securities and earn brokerage or other compensation or act as a market maker in the financial instruments of the subject company or act as an advisor or lender/borrower to the subject company or may have any other potential conflict of interests with respect to any recommendation and other related information and opinions.