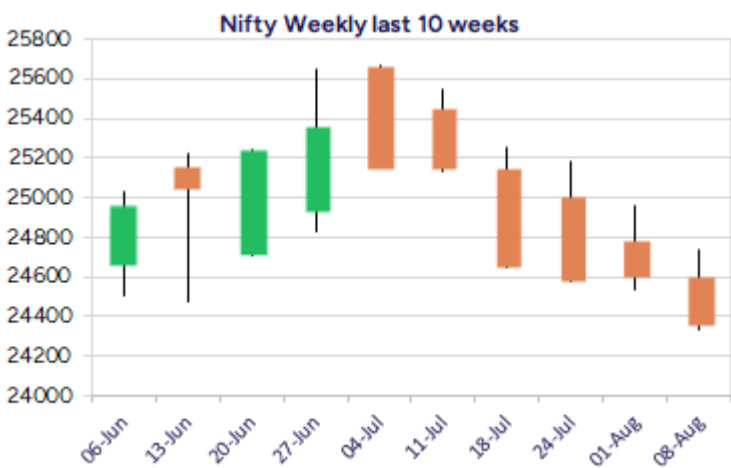
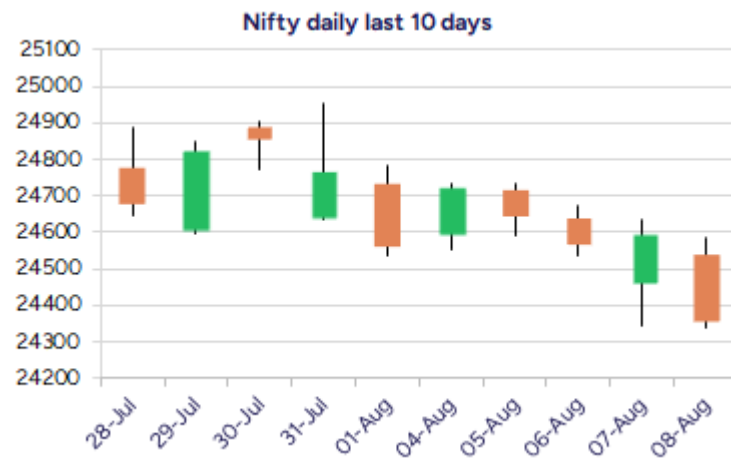


Date: 11th August 2025

* Sensex 79857.79 - 765.47

* Nifty 24363.30 - 232.85

* Bank Nifty 55004.90 - 516.25



*Blue candle → Close rate > Open rate * Red candle → Close rate < Open rate

Market Preview

Nifty breaks the crucial 24500 support zone

Nifty witnessed a weak session with pessimism taking control of the situation with uncertainty prevailing and broke the important 24500 support zone. BankNifty indicated a weak bearish engulfing candle pattern on the daily chart to signify further downward movement expected in the coming sessions. The market breadth was once again weak with the advance decline indicating a ratio of 1:2 at close.

Market Forecast

Nifty daily range 24200-24600

Nifty amid uncertainty with the tariff turmoil, once again fizzled out from the 24600 zone with profit booking witnessed weakening the bias with the index precariously placed having the crucial 200 period MA at 24000 level as the major support from here on. The sentiment has turned very cautious and only a decisive breach above the 24800 zone shall get some clarity and conviction for further rise in the coming sessions.

BankNifty, plunged from 55600 zone in the morning session and continued with the slide as the day progressed to end on a weak note with a bearish engulfing pattern on the daily chart signalling weak sentiment and can anticipate for further slide. The 100 period MA positioned at 54800 level is at risk and a decisive breach below shall trigger for fresh downward slide with 53500 zone as the major support of the previous low made.

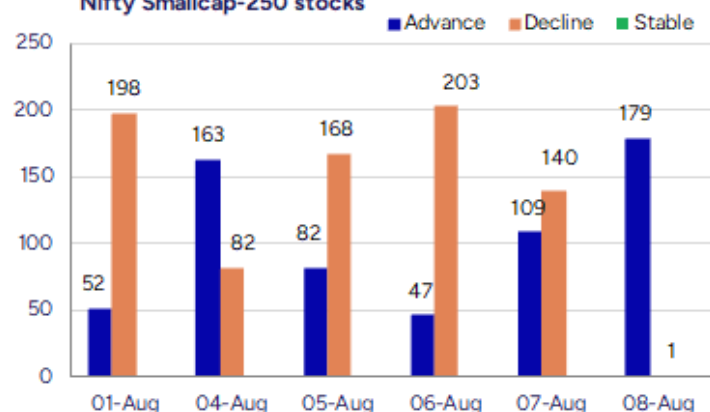
The support for the day is seen at 24200 levels while the resistance is seen at 24600 levels. BankNifty would have the daily range of 54400-55600 levels.

Indices	Period	Closing	% Chng	Trend	Reversal	2 Sup	1 Sup	Pivot	1 Res	2 Res
Nifty	Daily	24363.30	-0.95%	-4	24488.20	24181	24272	24429	24520	24677
	Weekly	24363.30	-0.82%	-5	25098.55	24083	24223	24479	24619	24874
	Monthly	24768.35	-2.93%	3	24708.35	23999	24384	24994	25379	25990
Bank Nifty	Daily	55004.90	-0.93%	-11	55243.35	54441	54723	55188	55470	55935
	Weekly	55004.90	-1.10%	-5	57061.40	54378	54692	55221	55534	56064
	Monthly	55961.95	-2.36%	4	55173.20	54361	55162	56360	57160	58359
Sensex	Daily	79857.79	-0.95%	-4	80262.60	79287	79572	80061	80347	80836
	Weekly	79857.79	-0.92%	-5	82214.45	78930	79394	80243	80707	81555
	Monthly	81185.58	-2.90%	-1	81149.00	78601	79893	81912	83205	85224

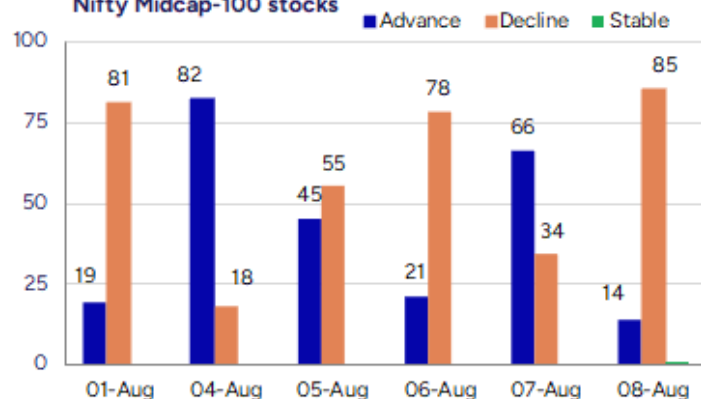
Gainers - Losers (Nifty 500 Stocks)

Gainers				Losers			
Company Name	Last Price	% Gain	Volume	Company Name	Last Price	% Loss	Volume
Mirc Electronic	20.37	19.61	10537928	PG Electroplast	588.8	-20.09	21330822
KRBL	427.9	15.07	27095641	Sahaj Fashions	9.65	-13.06	4000
Premier Polyfil	50.65	10.93	297560	Kalyan Jeweller	528.1	-10.64	34305820
Mukand	136.2	9.82	1654315	Gillanders Arbu	119.24	-10.12	91644
Divine Hira Jew	69	9.7	40000	Best Agrolife	453.75	-10	376448
Jubilant Agri	2325.5	9.26	109647	Plada Infotech	20.3	-9.98	15000
Sanghvi Movers	307.7	9.09	4398353	Xtglobal	31.19	-9.96	142068

Nifty Smallcap-250 stocks



Nifty Midcap-100 stocks



Nifty Daily chart with RSI indicator



BankNifty Daily chart with RSI indicator



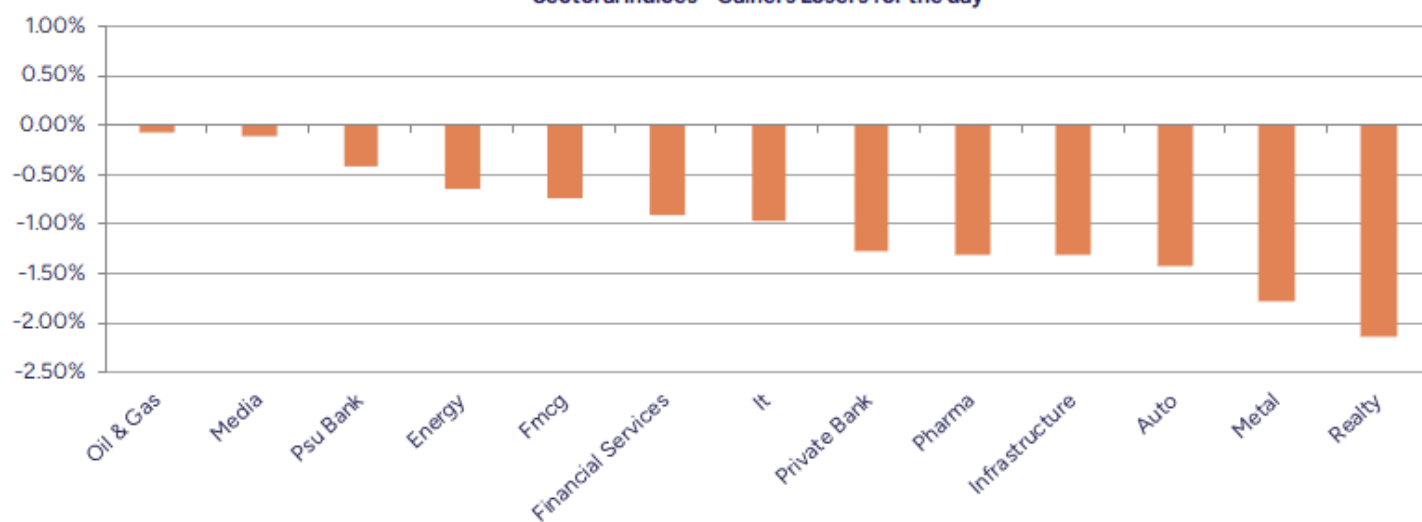
Breakouts - Cross above 200 DMA			
Company Name	LCP	Change %	200 DMA
Mirc Electronic	20.37	15.94	17.57
Sanghvi Movers	307.7	5.72	291.06
Kernex Micro	1085.7	4.99	1034.05
Baweja Studios	63.95	3.00	62.09
Pearl Global In	1332.6	1.78	1309.28
Sunlite Recycli	149.65	1.61	147.28
Sotac Pharma	130.85	1.58	128.82
Megastar Foods	244	1.58	240.21
AVT Natural	70.6	1.54	69.53
Caplin Labs	2111	1.50	2079.72
JHS Svendgaard	38.98	1.43	38.43
Motherson SWI	39.09	1.30	38.59
Ravi Kumar Dist	28.03	1.23	27.69
Madhav Copper	51.31	1.14	50.73
Sasta Sundar	286.35	1.12	283.19
Indian Metals	734.65	0.95	727.77
Pudumjee Paper	129.7	0.95	128.48
Cinevista	17.19	0.76	17.06

* Stocks crossing above its Simple Moving Average (200DMA)

Breakdown - Cross below 200 DMA			
Company Name	LCP	Change %	200 DMA
Kalyan Jeweller	528.1	-8.73	578.64
Excel	1170.5	-4.84	1230.09
COFORGE LTD.	1606.8	-4.11	1675.66
Aditya Ultra	39	-3.89	40.58
Chambal Fert	530.55	-3.85	551.77
Kronox Lab Scie	164.82	-3.66	171.08
DEE Development	263	-3.50	272.54
S Chand and Co	199.78	-3.46	206.93
Oswal ChemandFe	42.84	-3.43	44.36
Sequent Scienti	168.04	-3.23	173.64
Cigniti Tech	1504.4	-3.22	1554.51
KPR Mill	984.8	-3.02	1015.46
Divis Labs	5914.5	-2.97	6095.51
Navkar Corp	117.9	-2.97	121.51
Garware Technic	833.55	-2.81	857.69
BLS E-Services	182.07	-2.79	187.29
R R Kabel	1241.7	-2.58	1274.63
Banswara Syntex	136.27	-2.51	139.78

* Stocks crossing below its Simple Moving Average (200DMA)

Sectoral Indices - Gainers Losers for the day



Stocks witnessing a volume surge as compared to their 5 day average volume

Watch out for the stocks that have seen a huge spurt in its share price over the last three days

Volume Shockers - NSE					
Company name	LCP	% Chg	Volume	Avg Vol *	% Chg
KRBL	427.9	15.07	27095641	344672	7761
Touchwood Enter	102.31	3.46	327938	5400	5973
KPIL	1183.6	6.35	6085931	117159	5095
Krishna Institu	711.3	-4.27	2582283	59456	4243
Cool Caps	84.85	1.92	200000	8400	2281
India Shelter	931.45	7.24	2149602	93274	2205
Bharti Airtel	1858.6	-3.33	93799075	4632906	1925
KM Sugar Mills	28.35	8.45	704287	44577	1480
GSFC	213.2	7.17	18987006	1274696	1390
Krishival Foods	371.65	-1.3	17418	1200	1352
Bharat Wire Rop	182.07	4.98	1479737	103733	1326
Oneclick Logi.	232.65	1.79	58800	4320	1261
Salzer Electro	900.7	5.33	1181279	93424	1164
Jeena Sikho	547.35	-5.79	208350	18612	1019
P and G	13223	0.05	86531	7742	1018
Voler Car	152.5	4.99	352000	32000	1000
India Pesticide	226.83	1.62	7246409	674613	974
PG Electroplast	588.8	-20.09	21330822	2012011	960
Narmada Agrobias	23.28	3.47	585906	56259	941
Orient Press	89.04	4.04	47993	4640	934

* the Average Volume of last 5 days

Price Shockers - NSE				
Company name	LCP	Prv Close	% Chg	Volume
Mirc Electronic	20.37	17.18	18.57	10538478
BGR Energy	126	106.73	18.05	1064848
Sumit Woods	96.57	82.04	17.71	121457
Sandesh	1368	1163.2	17.61	11438
RNFI Services	323.6	275.2	17.59	274200
Blue Coast	64.42	55.66	15.74	731
Ginni Filaments	55.05	47.57	15.72	209681
United Polyfab	40.05	34.62	15.68	864024
Centum Electron	2421.3	2118.9	14.27	43217
Vertoz	95.1	83.52	13.86	0
Sanghvi Movers	307.7	270.25	13.86	4398976
Ujaas Energy	366.65	323.8	13.23	7976
KRBL	427.9	377.95	13.22	27095689
BLB	16.88	15.12	11.64	608909
Kajaria Ceramic	1308.5	1187	10.24	1995323

* the % price rise of the last 3 days

Nifty 50 stocks - Summary Details											
Symbol	LTP	Chng	% Chng	Volume (lacs)	Turnover (crs.)	52w High	Diff with 52w H	52w Low	Diff with 52w L	365 days % chng	30 days % chng
NIFTY 50	24363.30	-232.85	-0.95%	3126.09	38134.22	26277.35	7.28%	21743.65	12.05%	-3.63%	1.23%
ADANIENT	2179.00	-70.80	-3.15%	25.52	557.78	3242.65	32.80%	2025.00	7.60%	-13.18%	-29.38%
ADANIPTS	1325.00	-20.40	-1.52%	15.61	207.51	1556.00	14.85%	995.65	33.08%	-7.12%	-12.85%
APOLLOHOSP	7099.00	-71.00	-0.99%	3.27	232.79	7635.00	7.02%	6001.00	18.30%	-5.22%	6.69%
ASIANPAINT	2476.00	-30.50	-1.22%	11.78	293.56	3394.90	27.07%	2124.75	16.53%	0.88%	-19.18%
AXISBANK	1059.10	-17.10	-1.59%	50.85	539.96	1281.65	17.36%	933.50	13.45%	-7.65%	-5.33%
BAJAJ-AUTO	8218.00	-11.00	-0.13%	2.83	232.56	12774.00	35.67%	7089.35	15.92%	-1.33%	-15.24%
BAJAJFINSV	1919.00	5.00	0.26%	5.08	97.43	2135.00	10.12%	1523.25	25.98%	-5.17%	21.80%
BAJFINANCE	878.00	-1.10	-0.13%	37.37	328.99	978.80	10.30%	642.50	36.65%	-5.23%	-86.75%
BEL	384.40	-3.35	-0.86%	71.38	274.99	436.00	11.83%	240.25	60.00%	-8.12%	29.16%
BHARTIARTL	1859.50	-63.10	-3.28%	938.01	17550.26	2045.80	9.11%	1422.60	30.71%	-5.29%	33.35%
CIPLA	1487.30	-3.70	-0.25%	9.20	136.85	1702.05	12.62%	1335.00	11.41%	0.18%	-4.03%
COALINDIA	378.95	-0.60	-0.16%	41.72	158.64	543.55	30.28%	349.25	8.50%	-0.86%	-28.59%
DRREDDY	1215.00	14.20	1.18%	23.89	288.49	1421.49	14.53%	1020.00	19.12%	-6.47%	-82.66%
EICHERMOT	5670.50	-11.00	-0.19%	3.74	212.33	5906.50	4.00%	4508.75	25.77%	0.04%	23.59%
GRASIM	2691.60	-52.10	-1.90%	11.63	313.51	2896.00	7.06%	2276.95	18.21%	-2.73%	4.04%
HCLTECH	1476.30	0.80	0.05%	28.16	414.93	2012.20	26.63%	1302.75	13.32%	-13.62%	-7.47%
HDFCBANK	1972.00	-23.40	-1.17%	69.47	1374.88	2037.70	3.22%	1601.15	23.16%	-0.30%	22.91%
HDFCLIFE	759.80	4.10	0.54%	22.11	168.11	820.75	7.43%	584.30	30.04%	-4.84%	8.54%
HEROMOTOCO	4600.00	-60.70	-1.30%	9.72	452.15	6246.25	26.36%	3344.00	37.56%	8.38%	-11.07%
HINDALCO	674.00	-7.80	-1.14%	34.71	234.50	772.65	12.77%	546.45	23.34%	0.18%	10.12%
HINDUNILVR	2500.00	-17.50	-0.70%	8.40	210.08	3035.00	17.63%	2136.00	17.04%	5.22%	-8.26%
ICICIBANK	1432.00	-8.30	-0.58%	54.15	778.19	1500.00	4.53%	1153.00	24.20%	-0.12%	22.85%
INDUSINDBK	780.55	-26.80	-3.32%	24.90	197.21	1498.00	47.89%	606.00	28.80%	-5.05%	-39.98%
INFY	1424.00	-12.90	-0.90%	100.48	1431.25	2006.45	29.03%	1307.00	8.95%	-12.31%	-19.80%
ITC	414.45	0.85	0.21%	98.14	406.60	528.50	21.58%	390.15	6.23%	-0.86%	-16.05%
JIOFIN	321.00	-4.50	-1.38%	103.08	332.22	363.00	11.57%	198.65	61.59%	-1.02%	-1.29%
JSWSTEEL	1046.50	-18.30	-1.72%	22.34	235.40	1074.90	2.64%	880.00	18.92%	1.89%	17.47%
KOTAKBANK	1955.00	-37.10	-1.86%	21.86	429.27	2301.90	15.07%	1679.05	16.43%	-10.45%	12.13%
LT	3610.00	-31.60	-0.87%	13.37	485.10	3963.50	8.92%	2965.30	21.74%	0.98%	0.09%
M&M	3141.80	-69.30	-2.16%	17.21	545.40	3303.00	4.88%	2425.00	29.56%	1.68%	19.78%
MARUTI	12567.00	-65.00	-0.51%	2.47	312.06	13541.65	7.20%	10725.00	17.17%	1.76%	2.11%
NESTLEIND	1097.80	-19.50	-1.75%	12.43	137.47	1389.00	20.96%	1055.00	4.06%	-7.58%	-11.42%
NTPC	335.00	5.25	1.59%	112.46	375.25	448.45	25.30%	292.80	14.41%	-3.92%	-20.79%
ONGC	233.20	-0.73	-0.31%	52.48	122.69	345.00	32.41%	205.00	13.76%	-3.83%	-28.92%
POWERGRID	284.80	-0.75	-0.26%	61.73	175.85	366.25	22.24%	247.30	15.16%	-4.10%	-18.89%
RELIANCE	1366.20	-23.20	-1.67%	87.93	1208.91	1551.00	11.91%	1114.85	22.55%	-9.64%	-52.57%
SBILIFE	1837.80	-23.30	-1.25%	7.80	143.85	1936.00	5.07%	1372.55	33.90%	2.43%	10.41%
SBIN	802.50	-2.65	-0.33%	157.08	1259.13	875.45	8.33%	680.00	18.01%	-0.92%	-0.43%
SHRIRAMFIN	609.00	-18.35	-2.93%	54.93	338.37	730.45	16.63%	493.35	23.44%	-6.22%	-78.55%
SUNPHARMA	1587.80	-10.60	-0.66%	16.54	262.83	1960.35	19.00%	1553.05	2.24%	-4.43%	-7.84%
TATACONSUM	1047.90	-4.90	-0.47%	8.44	88.98	1234.30	15.10%	882.90	18.69%	-4.28%	-12.24%
TATAMOTORS	630.80	-15.70	-2.43%	101.43	649.43	1142.00	44.76%	535.75	17.74%	-6.74%	-36.95%
TATASTEEL	158.25	-1.42	-0.89%	119.49	189.05	170.18	7.01%	122.62	29.06%	-1.42%	3.78%
TCS	3031.90	-15.10	-0.50%	27.62	840.55	4592.25	33.98%	2991.60	1.35%	-10.55%	-27.46%
TECHM	1482.40	0.40	0.03%	13.72	203.67	1807.70	18.00%	1209.40	22.57%	-9.38%	0.57%
TITAN	3466.70	51.00	1.49%	21.84	754.99	3867.00	10.35%	2925.00	18.52%	-0.74%	2.69%
TRENT	5308.00	4.50	0.08%	11.93	634.26	8345.00	36.39%	4488.00	18.27%	-2.51%	-3.09%
ULTRACEMCO	12167.00	-106.00	-0.86%	2.02	246.22	12714.00	4.30%	10047.85	21.09%	-1.38%	6.32%
WIPRO	239.33	-2.99	-1.23%	89.21	213.92	324.60	26.27%	228.00	4.97%	-10.14%	-51.28%
ETERNAL	300.30	-1.45	-0.48%	284.58	855.76	314.45	4.50%	194.80	54.16%	14.52%	#VALUE!

Disclaimer / Disclosures

ANALYST CERTIFICATION

I, Mrs. Vaishali Parekh B.com, Research Analyst, author and the name subscribed to this report, hereby certify that all of the views expressed in this research report accurately reflect our views about the subject issuer(s) or securities. We also certify that no part of our compensation was, is, or will be directly or indirectly related to the specific recommendation(s) or view(s) in this report.

Terms & conditions and other disclosures:

Prabhudas Lilladher Pvt. Ltd, Mumbai, India (hereinafter referred to as "PL") is engaged in the business of Stock Broking, Portfolio Manager, Depository Participant and distribution for third party financial products. PL is a subsidiary of Prabhudas Lilladher Advisory Services Pvt Ltd. which has its various subsidiaries engaged in business of commodity broking, investment banking, financial services (margin funding) and distribution of third party financial/other products, details in respect of which are available at www.plindia.com

This document has been prepared by the Research Division of PL and is meant for use by the recipient only as information and is not for circulation. This document is not to be reported or copied or made available to others without prior permission of PL. It should not be considered or taken as an offer to sell or a solicitation to buy or sell any security.

The information contained in this report has been obtained from sources that are considered to be reliable. However, PL has not independently verified the accuracy or completeness of the same. Neither PL nor any of its affiliates, its directors or its employees accepts any responsibility of whatsoever nature for the information, statements and opinion given, made available or expressed herein or for any omission therein.

Recipients of this report should be aware that past performance is not necessarily a guide to future performance and value of investments can go down as well. The suitability or otherwise of any investments will depend upon the recipient's particular circumstances and, in case of doubt, advice should be sought from an independent expert/advisor.

Either PL or its affiliates or its directors or its employees or its representatives or its clients or their relatives may have position(s), make market, act as principal or engage in transactions of securities of companies referred to in this report and they may have used the research material prior to publication.

PL may from time to time solicit or perform investment banking or other services for any company mentioned in this document.

PL is registered as Research Analyst under Securities and Exchange Board of India (Research Analysts) Regulations, 2014 PL submits that no material disciplinary action has been taken on us by any Regulatory Authority impacting Equity Research Analysis activities.

PL or its research analysts or its associates or his relatives do not have any financial interest in the subject company.

PL or its research analysts or its associates or his relatives do not have actual/beneficial ownership of one per cent or more securities of the subject company at the end of the month immediately preceding the date of publication of the research report.

PL or its research analysts or its associates or his relatives do not have any material conflict of interest at the time of publication of the research report.

PL or its associates might have received compensation from the subject company in the past twelve months.

PL or its associates might have managed or co-managed public offering of securities for the subject company in the past twelve months or mandated by the subject company for any other assignment in the past twelve months.

PL or its associates might have received any compensation for investment banking or merchant banking or brokerage services from the subject company in the past twelve months.

PL or its associates might have received any compensation for products or services other than investment banking or merchant banking or brokerage services from the subject company in the past twelve months PL or its associates might have received any compensation or other benefits from the subject company or third party in connection with the research report.

PL encourages independence in research report preparation and strives to minimize conflict in preparation of research report. PL or its analysts did not receive any compensation or other benefits from the subject Company or third party in connection with the preparation of the research report. PL or its Research Analysts do not have any material conflict of interest at the time of publication of this report.

It is confirmed that Mrs.Vaishali Parekh B.com, Research Analyst of this report has not received any compensation from the companies mentioned in the report in the preceding twelve months compensation of our Research Analysts is not based on any specific merchant banking, investment banking or brokerage service transactions.

The Research analysts for this report certifies that all of the views expressed in this report accurately reflect his or her personal views about the subject company or companies and its or their securities, and no part of his or her compensation was, is or will be, directly or indirectly related to specific recommendations or views expressed in this report.

The research analysts for this report has not served as an officer, director or employee of the subject company PL or its research analysts have not engaged in market making activity for the subject company

Our sales people, traders, and other professionals or affiliates may provide oral or written market commentary or trading strategies to our clients that reflect opinions that are contrary to the opinions expressed herein, and our proprietary trading and investing businesses may make investment decisions that are inconsistent with the recommendations expressed herein. In reviewing these materials, you should be aware that any or all of the foregoing, among other things, may give rise to real or potential conflicts of interest.

PL and its associates, their directors and employees may (a) from time to time, have a long or short position in, and buy or sell the securities of the subject company or (b) be engaged in any other transaction involving such securities and earn brokerage or other compensation or act as a market maker in the financial instruments of the subject company or act as an advisor or lender/borrower to the subject company or may have any other potential conflict of interests with respect to any recommendation and other related information and opinions.