

Date: 12th August 2025

* Sensex 80604.08 + 746.29

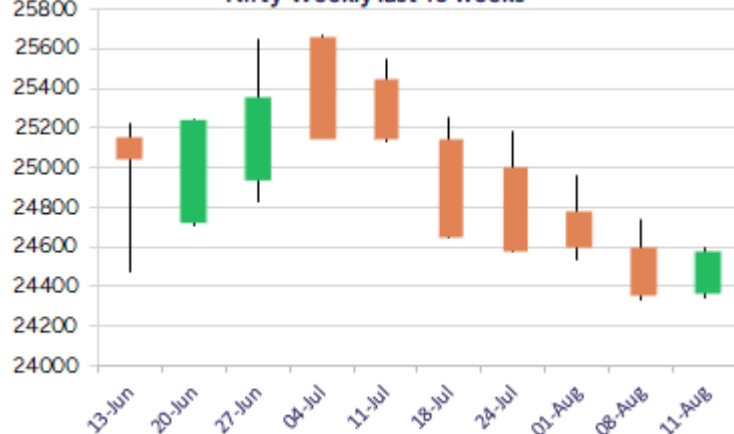
* Nifty 24585.05 + 221.75

* Bank Nifty 55510.75 + 505.85

Nifty daily last 10 days



Nifty Weekly last 10 weeks



Market Preview

Nifty extends gains; ends near 24600 zone

Nifty witnessed a pullback to end near the 24600 zone, with stocks picking up strongly across the board and further rise anticipated in the coming days. Bank Nifty witnessed a recovery from the 100 EMA level of the 54950 zone to end above the 55500 level with sentiment much better placed. The market breadth was positive, with the advance decline indicating a 2:1 ratio at close.

Market Forecast

Nifty daily range 24400-24800

Nifty, after scaling a low of 24350 in the zone in the previous session, the index witnessed a significant pullback to end near the 24600 zone with sentiment eased out to some extent, and a decisive breach above the 24630 zone would be required to improve the bias. The index would have the near-term support of 24300, which needs to be sustained, and we expect further improvement in the coming sessions.

BankNifty, witnessing a recovery, moved with support of the 100EMA level of 54950 to improve the bias. The index would have the tough resistance zone near the 56000 level, while on the downside, the 54900 zone shall be positioned as the crucial support level that needs to be sustained.

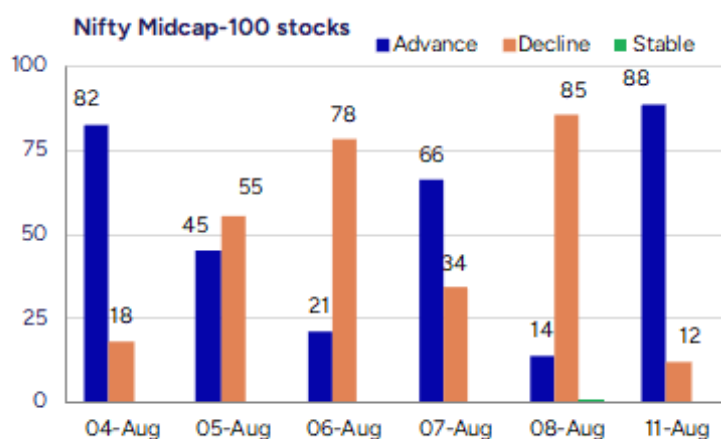
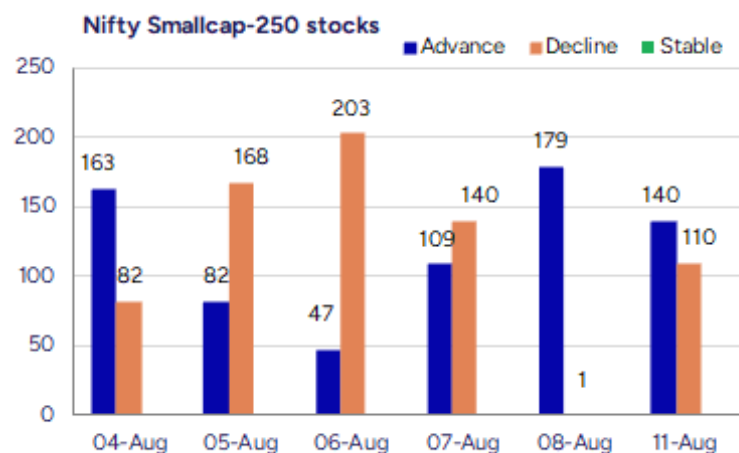
The support for the day is seen at 24400 levels, while the resistance is seen at 24800 levels. BankNifty would have the daily range of 54800-56200 levels.

*Blue candle → Close rate > Open rate * Red candle → Close rate < Open rate

Indices	Period	Closing	% Chng	Trend	Reversal	2 Sup	1 Sup	Pivot	1 Res	2 Res
Nifty	Daily	24585.05	0.91%	1	24444.18	24258	24421	24511	24675	24765
	Weekly	24363.30	-0.82%	-5	25098.55	24083	24223	24479	24619	24874
	Monthly	24768.35	-2.93%	3	24708.35	23999	24384	24994	25379	25990
Bank Nifty	Daily	55510.75	0.92%	1	55089.00	54705	55108	55331	55734	55956
	Weekly	55004.90	-1.10%	-5	57061.40	54378	54692	55221	55534	56064
	Monthly	55961.95	-2.36%	4	55173.20	54361	55162	56360	57160	58359
Sensex	Daily	80604.08	0.93%	1	80101.80	79474	80039	80338	80903	81201
	Weekly	79857.79	-0.92%	-5	82214.45	78930	79394	80243	80707	81555
	Monthly	81185.58	-2.90%	-1	81149.00	78601	79893	81912	83205	85224

Gainers - Losers (Nifty 500 Stocks)

Gainers				Losers			
Company Name	Last Price	% Gain	Volume	Company Name	Last Price	% Loss	Volume
Yatra Online	114.9	20	8928289	Surani Steel Tu	79.85	-16.78	20000
CL Educate	99.54	20	543877	PG Electroplast	506	-14.06	51299689
Mirc Electronic	24.44	19.98	15171832	Smarten Power S	97.3	-11.38	578400
HBL Eng	683.95	14.03	34613619	Aaron Industrie	405.1	-10.77	77520
DEE Development	297.35	13.06	9504519	Best Agrolife	408.4	-9.99	155431
Hariom Pipe	497.1	12.86	4596543	Shri Hare-Krish	55	-9.98	82000
GE Power India	355.35	12.72	5266780	Drone Desti	90.85	-9.92	93000



Nifty Daily chart with RSI indicator



BankNifty Daily chart with RSI indicator

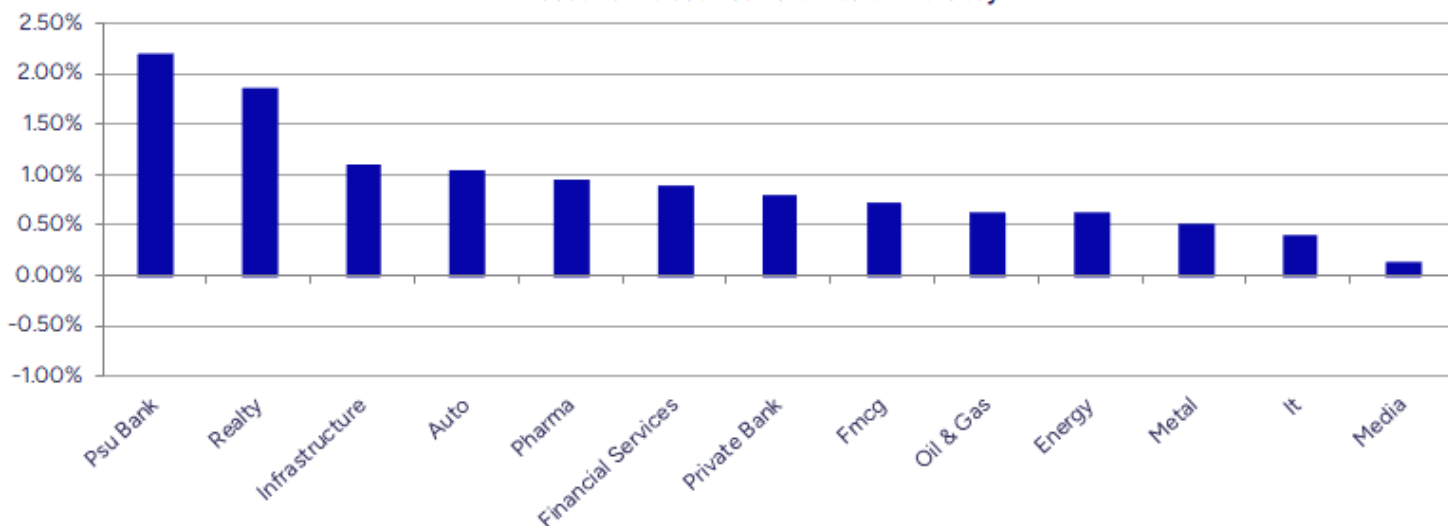


Breakouts - Cross above 200 DMA				Breakdown - Cross below 200 DMA			
Company Name	LCP	Change %	200 DMA	Company Name	LCP	Change %	200 DMA
Hariom Pipe	497.1	10.42	450.21	Best Agrolife	408.4	-6.51	436.85
DEE Development	297.35	9.06	272.64	KN Agri	233.35	-5.39	246.65
Websol Energy	1448.3	7.60	1346.02	Brightcom Group	14.51	-4.54	15.2
NCL Industries	222.07	5.79	209.91	KKV Agro Powers	696.4	-4.39	728.35
IZMO	401.65	4.91	382.84	Megastar Foods	230.6	-4.00	240.21
Sampann Utpadan	32.94	3.85	31.72	Heranba	330.5	-3.72	343.28
Godawari Power	196.57	3.53	189.86	Akzo Nobel	3452.8	-2.67	3547.38
Dhunseri Ventur	370.65	3.39	358.5	Borosil Sci	149.78	-2.46	153.55
Nitco	130.44	3.12	126.49	Technocraft Ind	2740.7	-2.18	2801.64
AksharChem	273.85	2.97	265.96	Orient Bell	283.95	-2.17	290.25
Uniparts India	381.25	2.96	370.29	Art Nirman	52	-2.15	53.14
Sequent Scienti	176.83	1.90	173.53	Arman Financial	1419.8	-2.11	1450.47
Maheshwari Logi	60.87	1.89	59.74	Mazda	266.75	-1.97	272.1
Mangalam Organ	476.1	1.82	467.57	Pearl Global In	1289.4	-1.66	1311.2
Delta	88.5	1.76	86.97	Asian Hotel (E)	147.22	-1.54	149.53
CL Educate	99.54	1.76	97.82	Kewal Kiran	524.3	-1.42	531.83
Sapphire Foods	323.6	1.39	319.15	Pudumjee Paper	126.83	-1.35	128.57
NHPC	83.45	1.39	82.31	Innova Captab	901.05	-1.32	913.12

* Stocks crossing above its Simple Moving Average (200DMA)

* Stocks crossing below its Simple Moving Average (200DMA)

Sectoral Indices - Gainers Losers for the day



Stocks witnessing a volume surge as compared to their 5 day average volume

Watch out for the stocks that have seen a huge spurt in its share price over the last three days

Volume Shockers - NSE					
Company name	LCP	% Chg	Volume	Avg Vol *	% Chg
DEE Development	297.35	13.06	9505221	90432	10411
DOMS Industries	2503.2	9.42	3424927	61730	5448
HBL Eng	683.95	14.03	34613757	691774	4904
Hariom Pipe	497.1	12.86	4596644	136864	3259
Dhunseri Ventur	370.65	7.79	337864	12099	2693
KCK Industries	41.45	3.63	372500	13600	2639
United Nilgiri	475.7	3.93	33015	1304	2432
Anmol India	16.28	10.07	1200021	48265	2386
GE Power India	355.35	12.72	5268301	212448	2380
Uniparts India	381.25	12.4	1234134	55555	2121
ANDHRSUGAR	81.92	4.42	2218343	106050	1992
VST Tillers	4806.1	7.91	258075	12417	1978
Universal Cable	739.85	5.59	410767	21051	1851
Remsons Ind	128.03	9.99	1765749	91652	1827
Ausom Enterp	112.31	4.99	22457	1319	1602
Commercial Syn	138.9	3.98	1249480	77808	1506
Network People	2081.6	-1.86	623982	39840	1466
Surani Steel Tu	79.85	-16.78	20000	1280	1463
Jeena Sikho	536.1	-2.06	263596	18612	1316
Krishival Foods	360	-3.13	16492	1200	1274

* the Average Volume of last 5 days

Price Shockers - NSE				
Company name	LCP	Prv Close	% Chg	Volume
Mirc Electronic	24.44	17.44	40.14	15187902
CL Educate	99.54	82.38	20.83	543879
Jubilant Agri	2602.1	2163.7	20.26	119675
KRBL	446.85	373	19.8	8927446
Sanghvi Movers	327.9	274.25	19.56	3411237
Sanghvi Movers	327.9	274.25	19.56	3411237
Websol Energy	1448.3	1228.4	17.9	426302
Hariom Pipe	497.1	425.2	16.91	4596644
Blue Coast	67.64	58.44	15.74	127
Asian Hotels	318.2	274.95	15.73	1207
RNFI Services	320.55	277	15.72	285600
NRB Industrial	25.41	21.96	15.71	37922
United Polyfab	42.05	36.35	15.68	240528
HBL Eng	683.95	602.5	13.52	34613757
GE Power India	355.35	313.05	13.51	5268322
Shree Pushkar	393.15	347.75	13.06	299701
DEE Development	297.35	263.2	12.97	9505221
Oriental Trimex	10.36	9.2	12.61	326200
Kalpataru	406.7	361.35	12.55	583162
Ausom Enterp	112.31	100.15	12.14	22457

* the % price rise of the last 3 days

Nifty 50 stocks - Summary Details											
Symbol	LTP	Chng	% Chng	Volume (lacs)	Turnover (crs.)	52w High	Diff with 52w H	52w Low	Diff with 52w L	365 days % chng	30 days % chng
NIFTY 50	24585.05	221.75	0.91%	2411.39	21081.15	26277.35	6.44%	21743.65	13.07%	-3.13%	-0.02%
ADANIENT	2270.20	92.10	4.23%	23.76	536.42	3242.65	29.99%	2025.00	12.11%	-14.87%	-31.67%
ADANIPTS	1342.80	17.80	1.34%	20.53	273.33	1556.00	13.70%	995.65	34.87%	-7.45%	-13.61%
APOLLOHOSP	7248.00	163.50	2.31%	4.99	357.16	7635.00	5.07%	6001.00	20.78%	-1.46%	7.54%
ASIANPAINT	2491.40	15.80	0.64%	7.21	179.15	3394.90	26.61%	2124.75	17.26%	1.49%	-18.58%
AXISBANK	1071.10	13.00	1.23%	54.53	580.50	1281.65	16.43%	933.50	14.74%	-9.86%	-7.41%
BAJAJ-AUTO	8242.50	18.50	0.22%	1.80	148.26	12774.00	35.47%	7089.35	16.27%	1.95%	-15.79%
BAJAJFINSV	1929.30	10.10	0.53%	14.89	284.74	2135.00	9.63%	1523.25	26.66%	-4.86%	23.01%
BAJFINANCE	876.45	-0.70	-0.08%	53.68	470.80	978.80	10.46%	642.50	36.41%	-6.04%	-86.75%
BEL	383.70	-0.90	-0.23%	89.11	342.43	436.00	12.00%	240.25	59.71%	-6.03%	27.27%
BHARTIARTL	1855.30	-3.30	-0.18%	52.67	978.33	2045.80	9.31%	1430.00	29.74%	-3.29%	26.94%
CIPLA	1501.00	15.20	1.02%	8.98	134.65	1702.05	11.81%	1335.00	12.43%	0.05%	-5.65%
COALINDIA	381.50	1.80	0.47%	57.40	218.03	543.55	29.81%	349.25	9.23%	-0.33%	-28.33%
DRREDDY	1219.90	8.50	0.70%	12.46	152.22	1421.49	14.18%	1020.00	19.60%	-3.45%	-82.73%
EICHERMOT	5678.50	15.50	0.27%	4.76	270.08	5906.50	3.86%	4508.75	25.94%	0.90%	17.23%
GRASIM	2763.00	71.40	2.65%	12.36	340.20	2896.00	4.59%	2276.95	21.35%	-2.55%	4.62%
HCLTECH	1484.10	8.40	0.57%	23.75	352.55	2012.20	26.24%	1302.75	13.92%	-9.92%	-7.19%
HDFCBANK	1992.00	18.10	0.92%	45.53	904.61	2037.70	2.24%	1601.15	24.41%	-0.49%	19.62%
HDFCLIFE	765.00	3.45	0.45%	17.19	130.74	820.75	6.79%	584.30	30.93%	0.34%	8.42%
HEROMOTOCO	4565.00	-34.80	-0.76%	4.56	208.16	6246.25	26.92%	3344.00	36.51%	9.03%	-11.66%
HINDALCO	672.85	0.10	0.01%	32.35	217.77	772.65	12.92%	546.45	23.13%	0.27%	8.00%
HINDUNILVR	2509.00	10.40	0.42%	9.92	248.47	3035.00	17.33%	2136.00	17.46%	-0.83%	-9.05%
ICICIBANK	1437.30	1.40	0.10%	84.92	1213.50	1500.00	4.18%	1153.00	24.66%	0.98%	22.56%
INDUSINDBK	784.80	2.35	0.30%	16.29	127.68	1498.00	47.61%	606.00	29.50%	-8.90%	-42.03%
INFY	1426.00	2.90	0.20%	66.25	944.51	2006.45	28.93%	1307.00	9.10%	-10.77%	-19.63%
ITC	417.00	2.50	0.60%	85.14	354.23	528.50	21.10%	390.15	6.88%	-0.55%	-16.41%
JIOFIN	327.90	7.25	2.26%	113.43	368.47	363.00	9.67%	198.65	65.06%	-1.43%	-1.37%
JSWSTEEL	1053.50	4.30	0.41%	14.93	157.41	1074.90	1.99%	880.00	19.72%	1.16%	15.92%
KOTAKBANK	1963.10	10.40	0.53%	22.03	433.42	2301.90	14.72%	1679.05	16.92%	-12.06%	10.34%
LT	3672.00	64.40	1.79%	18.22	665.50	3963.50	7.35%	2965.30	23.83%	1.89%	0.43%
M&M	3184.10	39.90	1.27%	20.47	648.80	3303.00	3.60%	2425.00	31.30%	2.31%	14.37%
MARUTI	12583.00	-7.00	-0.06%	1.87	235.24	13541.65	7.08%	10725.00	17.32%	0.13%	2.99%
NESTLEIND	1106.20	9.70	0.88%	10.39	114.47	1389.00	20.36%	1055.00	4.85%	-54.38%	-56.22%
NTPC	336.00	1.25	0.37%	119.93	402.60	448.45	25.08%	292.80	14.75%	-2.32%	-18.48%
ONGC	233.99	0.55	0.24%	47.00	109.52	345.00	32.18%	205.00	14.14%	-3.44%	-29.80%
POWERGRID	285.40	0.55	0.19%	87.55	249.28	366.25	22.08%	247.30	15.41%	-4.59%	-17.67%
RELIANCE	1384.60	16.80	1.23%	99.97	1375.43	1551.00	10.73%	1114.85	24.20%	-8.52%	-53.61%
SBILIFE	1845.60	12.00	0.65%	4.55	84.00	1936.00	4.67%	1372.55	34.47%	-0.09%	6.29%
SBIN	820.80	16.50	2.05%	152.36	1250.61	875.45	6.24%	680.00	20.71%	-0.54%	-2.43%
SHRIRAMFIN	617.10	7.45	1.22%	33.48	206.14	730.45	15.52%	493.35	25.08%	-8.77%	-79.39%
SUNPHARMA	1611.70	24.80	1.56%	11.41	182.90	1960.35	17.79%	1553.05	3.78%	-5.09%	-8.55%
TATACONSUM	1055.30	4.30	0.41%	6.18	65.24	1234.30	14.50%	882.90	19.53%	-2.40%	-11.39%
TATAMOTORS	654.00	20.30	3.20%	172.75	1119.37	1142.00	42.73%	535.75	22.07%	-7.05%	-40.67%
TATASTEEL	158.50	0.55	0.35%	143.26	226.56	170.18	6.86%	122.62	29.26%	-1.18%	4.04%
TCS	3042.00	5.60	0.18%	18.84	572.86	4592.25	33.76%	2991.60	1.68%	-7.03%	-28.20%
TECHM	1481.00	0.60	0.04%	8.89	131.61	1807.70	18.07%	1209.40	22.46%	-7.62%	-1.75%
TITAN	3460.00	-0.20	-0.01%	5.64	194.76	3867.00	10.52%	2925.00	18.29%	2.93%	3.86%
TRENT	5430.50	113.50	2.13%	11.10	603.08	8345.00	34.93%	4488.00	21.00%	-0.88%	-15.27%
ULTRACEMCO	12400.00	243.00	2.00%	2.19	269.80	12714.00	2.47%	10047.85	23.41%	-2.71%	7.58%
WIPRO	241.50	2.45	1.02%	30.47	73.37	324.60	25.60%	228.00	5.92%	-7.45%	-51.34%
ETERNAL	309.00	8.10	2.69%	449.44	1372.17	314.45	1.73%	194.80	58.62%	14.26%	#VALUE!

Disclaimer / Disclosures

ANALYST CERTIFICATION

I, Mrs. Vaishali Parekh B.com, Research Analyst, author and the name subscribed to this report, hereby certify that all of the views expressed in this research report accurately reflect our views about the subject issuer(s) or securities. We also certify that no part of our compensation was, is, or will be directly or indirectly related to the specific recommendation(s) or view(s) in this report.

Terms & conditions and other disclosures:

Prabhudas Lilladher Pvt. Ltd, Mumbai, India (hereinafter referred to as "PL") is engaged in the business of Stock Broking, Portfolio Manager, Depository Participant and distribution for third party financial products. PL is a subsidiary of Prabhudas Lilladher Advisory Services Pvt Ltd. which has its various subsidiaries engaged in business of commodity broking, investment banking, financial services (margin funding) and distribution of third party financial/other products, details in respect of which are available at www.plindia.com

This document has been prepared by the Research Division of PL and is meant for use by the recipient only as information and is not for circulation. This document is not to be reported or copied or made available to others without prior permission of PL. It should not be considered or taken as an offer to sell or a solicitation to buy or sell any security.

The information contained in this report has been obtained from sources that are considered to be reliable. However, PL has not independently verified the accuracy or completeness of the same. Neither PL nor any of its affiliates, its directors or its employees accepts any responsibility of whatsoever nature for the information, statements and opinion given, made available or expressed herein or for any omission therein.

Recipients of this report should be aware that past performance is not necessarily a guide to future performance and value of investments can go down as well. The suitability or otherwise of any investments will depend upon the recipient's particular circumstances and, in case of doubt, advice should be sought from an independent expert/advisor.

Either PL or its affiliates or its directors or its employees or its representatives or its clients or their relatives may have position(s), make market, act as principal or engage in transactions of securities of companies referred to in this report and they may have used the research material prior to publication.

PL may from time to time solicit or perform investment banking or other services for any company mentioned in this document.

PL is registered as Research Analyst under Securities and Exchange Board of India (Research Analysts) Regulations, 2014 PL submits that no material disciplinary action has been taken on us by any Regulatory Authority impacting Equity Research Analysis activities.

PL or its research analysts or its associates or his relatives do not have any financial interest in the subject company.

PL or its research analysts or its associates or his relatives do not have actual/beneficial ownership of one per cent or more securities of the subject company at the end of the month immediately preceding the date of publication of the research report.

PL or its research analysts or its associates or his relatives do not have any material conflict of interest at the time of publication of the research report.

PL or its associates might have received compensation from the subject company in the past twelve months.

PL or its associates might have managed or co-managed public offering of securities for the subject company in the past twelve months or mandated by the subject company for any other assignment in the past twelve months.

PL or its associates might have received any compensation for investment banking or merchant banking or brokerage services from the subject company in the past twelve months.

PL or its associates might have received any compensation for products or services other than investment banking or merchant banking or brokerage services from the subject company in the past twelve months PL or its associates might have received any compensation or other benefits from the subject company or third party in connection with the research report.

PL encourages independence in research report preparation and strives to minimize conflict in preparation of research report. PL or its analysts did not receive any compensation or other benefits from the subject Company or third party in connection with the preparation of the research report. PL or its Research Analysts do not have any material conflict of interest at the time of publication of this report.

It is confirmed that Mrs.Vaishali Parekh B.com, Research Analyst of this report has not received any compensation from the companies mentioned in the report in the preceding twelve months compensation of our Research Analysts is not based on any specific merchant banking, investment banking or brokerage service transactions.

The Research analysts for this report certifies that all of the views expressed in this report accurately reflect his or her personal views about the subject company or companies and its or their securities, and no part of his or her compensation was, is or will be, directly or indirectly related to specific recommendations or views expressed in this report.

The research analysts for this report has not served as an officer, director or employee of the subject company PL or its research analysts have not engaged in market making activity for the subject company

Our sales people, traders, and other professionals or affiliates may provide oral or written market commentary or trading strategies to our clients that reflect opinions that are contrary to the opinions expressed herein, and our proprietary trading and investing businesses may make investment decisions that are inconsistent with the recommendations expressed herein. In reviewing these materials, you should be aware that any or all of the foregoing, among other things, may give rise to real or potential conflicts of interest.

PL and its associates, their directors and employees may (a) from time to time, have a long or short position in, and buy or sell the securities of the subject company or (b) be engaged in any other transaction involving such securities and earn brokerage or other compensation or act as a market maker in the financial instruments of the subject company or act as an advisor or lender/borrower to the subject company or may have any other potential conflict of interests with respect to any recommendation and other related information and opinions.