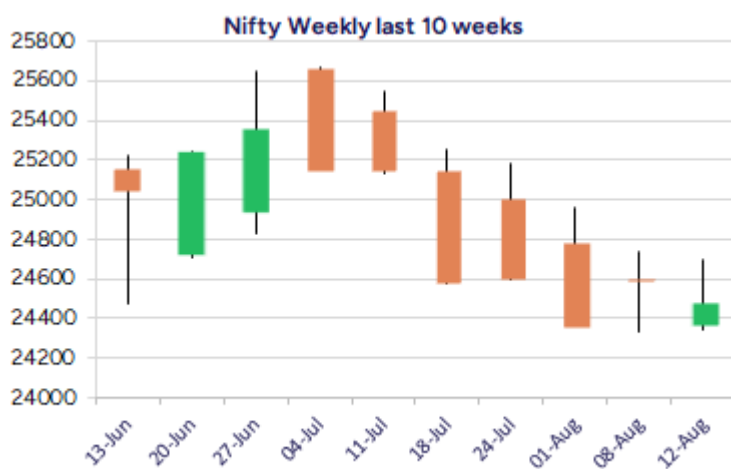
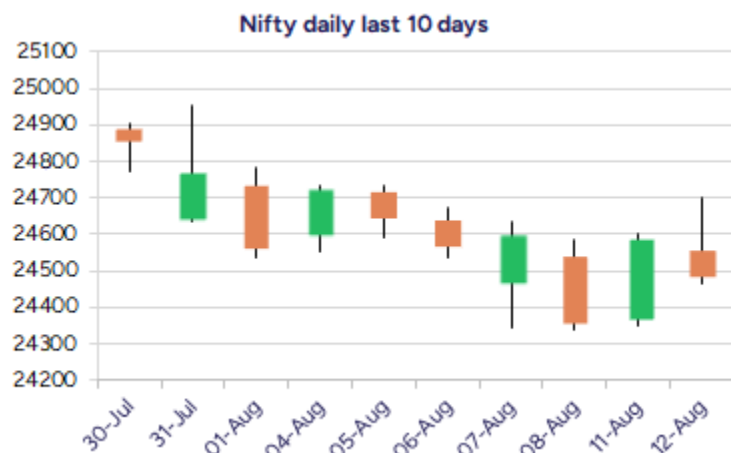


Date: 13<sup>th</sup> August 2025

\* Sensex 80235.59 - 368.49

\* Nifty 24487.40 - 97.65

\* Bank Nifty 55043.70 - 467.05



\*Blue candle → Close rate > Open rate \* Red candle → Close rate < Open rate

## Market Preview

### Nifty slips below 24500 zone; bias remains weak

Nifty failed to move past the 24700 zone during the intraday session and amid volatility plunged with profit booking seen as the day progressed to end below the 24500 level. BankNifty also gave in once again from near the 55600 zone and closed near the important 100 period MA at 55000 level with bias turning weak. The market breadth ended on a flat note with the advance decline indicating a neutral ratio at close.

## Market Forecast

### Nifty daily range 24300-24700

Nifty continue to remain volatile resisting near the 24700 zone with uncertainty prevailing having no clear directional move and slipped down to close below the important 24500 zone with bias and sentiment precariously placed as mentioned earlier. The index needs to move decisively above the 24800 level to establish some conviction and clarity for further upside movement with the important 200 period SMA at 24000 level positioned as the crucial support from current rate which needs to be sustained.

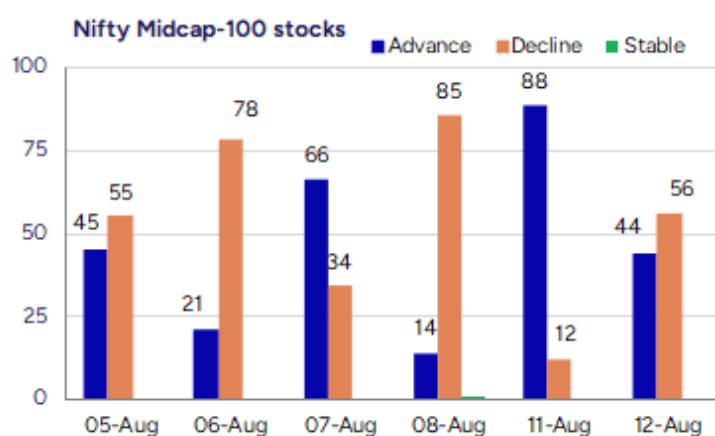
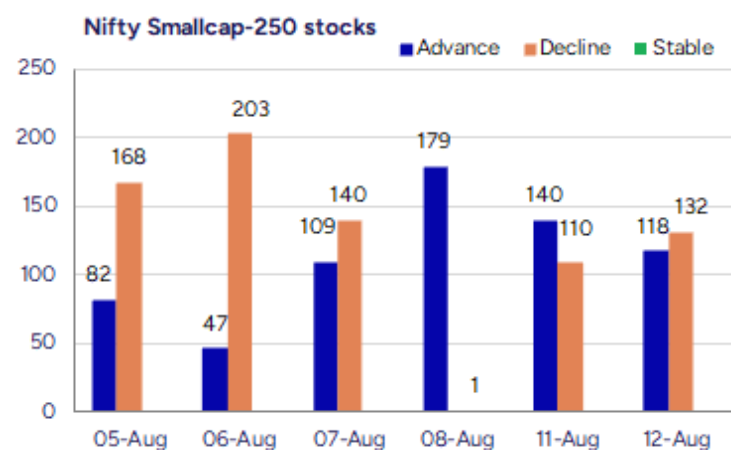
BankNifty, continue to hover between the tight narrow range of 55000 and 55700 zone with bias maintained with a cautious approach and would need a decisive breach above the 50EMA at 56000 level to bring some hope for further upside movement in the coming sessions. With the index precariously placed at current juncture, a decisive breach below the 54400 zone shall trigger for intensified selling pressure overall weakening the trend with next major support positioned near the important 200 period SMA at 52700 zone.

The support for the day is seen at 24300 levels while the resistance is seen at 24700 levels. BankNifty would have the daily range of 54500-55600 levels.

Indices	Period	Closing	% Chng	Trend	Reversal	2 Sup	1 Sup	Pivot	1 Res	2 Res
Nifty	Daily	24487.40	-0.40%	2	24468.85	24315	24401	24552	24638	24789
	Weekly	24363.30	-0.82%	-5	25098.55	24083	24223	24479	24619	24874
	Monthly	24768.35	-2.93%	3	24708.35	23999	24384	24994	25379	25990
Bank Nifty	Daily	55043.70	-0.84%	-1	55063.40	54639	54841	55204	55406	55769
	Weekly	55004.90	-1.10%	-5	57061.40	54378	54692	55221	55534	56064
	Monthly	55961.95	-2.36%	4	55173.20	54361	55162	56360	57160	58359
Sensex	Daily	80235.59	-0.46%	2	80165.25	79633	79934	80466	80767	81299
	Weekly	79857.79	-0.92%	-5	82214.45	78930	79394	80243	80707	81555
	Monthly	81185.58	-2.90%	-1	81149.00	78601	79893	81912	83205	85224

**Gainers - Losers ( Nifty 500 Stocks )**

Gainers				Losers			
Company Name	Last Price	% Gain	Volume	Company Name	Last Price	% Loss	Volume
WS Industries	86.26	19.99	286623	Marksans Pharma	186.74	-11.11	13053755
NDL Ventures	85.06	19.99	273445	Man Industries	396.5	-10.49	1804194
Yatra Online	137.11	19.33	30702885	Banco Products	540	-10.2	804483
Happy Square	89.35	18.34	88000	Abhishek Integr	54.95	-9.92	6000
Iware Supply	112.55	17.42	380400	Pix Transmis	1265.7	-9.31	350355
Quicktouch Tech	57.7	14.14	7500	Gallantt Ispat	710	-8.4	359623
Sonata	373.6	13.3	40991988	Astral Ltd	1269.3	-8.13	6619815



## Nifty Daily chart with RSI indicator



## BankNifty Daily chart with RSI indicator



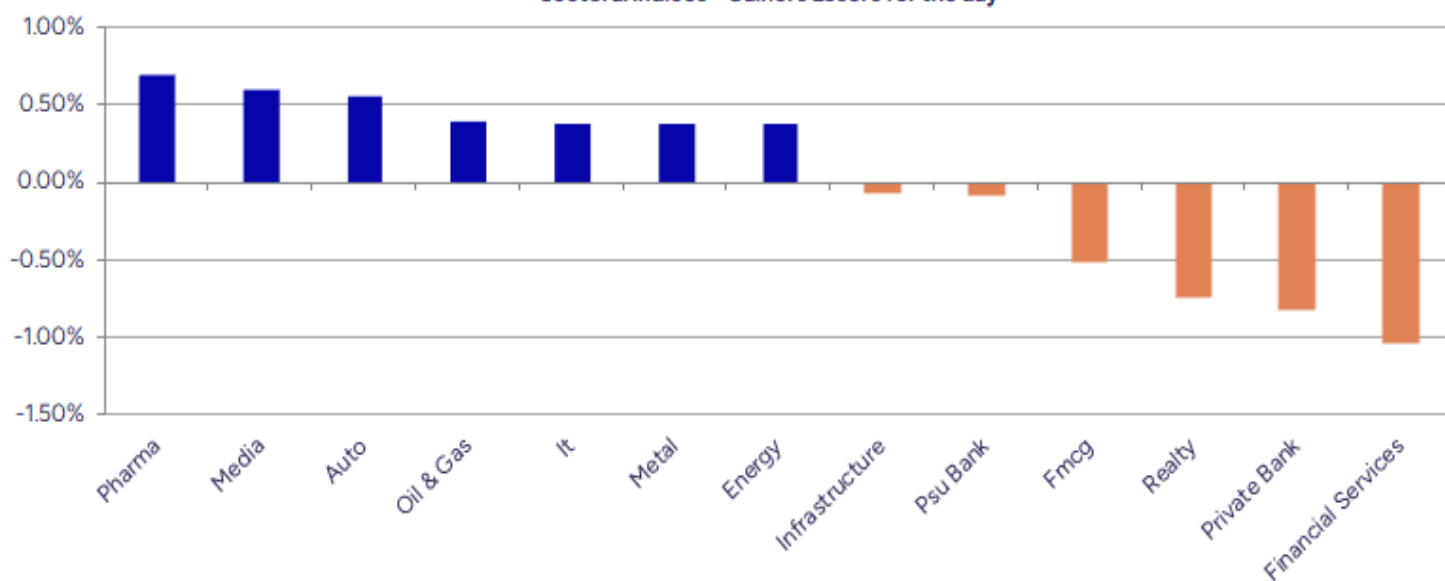
Breakouts - Cross above 200 DMA			
Company Name	LCP	Change %	200 DMA
Apex Frozen	248.82	6.57	233.48
Heranba	364.95	6.50	342.67
Gandhi Spl Tube	768.3	5.93	725.29
Khandwala Sec	26.96	5.93	25.45
Medi Assist Hea	556.1	5.30	528.11
Beta Drugs	1906.5	4.76	1819.88
Ramky Infra	561	3.54	541.84
Ramco System	402.15	3.32	389.22
Manugraph Ind	20.29	2.84	19.73
Indian Card	301.5	2.60	293.85
Emami Realty	113.12	2.35	110.52
Asian Granito	59.66	2.07	58.45
Veekayem Fashio	254.8	2.05	249.67
NLC India	240.22	1.88	235.79
Williamson Mago	34.25	1.87	33.62
TBO Tek	1445.4	1.72	1420.99
Keystone Real	609.8	1.62	600.1
Roto Pumps	88.36	1.62	86.95

\* Stocks crossing above its Simple Moving Average (200DMA)

Breakdown - Cross below 200 DMA			
Company Name	LCP	Change %	200 DMA
Agro Phos India	35.34	-3.92	36.78
Baweja Studios	60.05	-2.94	61.87
TARC	164.78	-2.49	168.99
Bajel Projects	213.84	-2.46	219.24
IFGL Refractory	220.43	-2.33	225.7
Sotac Pharma	126.05	-1.98	128.6
Tata Comm	1627	-1.88	1658.15
Sandesh	1302.6	-1.87	1327.45
Redington	235.8	-1.65	239.76
Saakshi Medtech	174.75	-1.57	177.53
Nila Spaces	13.11	-1.50	13.31
Radhika Jewel	95.56	-1.43	96.95
Rishabh Instru.	286.15	-1.30	289.93
Neuland Lab	12979	-1.29	13149.11
S H Kelkar	227.35	-1.24	230.2
Pearl Polymers	31.91	-1.12	32.27
PSP Projects	658.5	-1.08	665.66
Sasta Sundar	280.15	-1.03	283.07

\* Stocks crossing below its Simple Moving Average (200DMA)

Sectoral Indices - Gainers Losers for the day



Stocks witnessing a volume surge as compared to their 5 day average volume

Watch out for the stocks that have seen a huge spurt in its share price over the last three days

Volume Shockers - NSE					
Company name	LCP	% Chg	Volume	Avg Vol *	% Chg
Indian Card	304.2	14.23	251706	4160	5950
Apex Frozen	245.26	10.63	2291504	45841	4899
Mohit Ind	32.83	4.16	794758	16606	4686
Sonata	373.7	13.33	34374871	918864	3641
Yatra Online	136.88	19.13	29550893	799733	3595
Gandhi Spl Tube	774	11.79	254077	8272	2972
Airan	26.99	1.47	1478654	52168	2734
TVS Srichakra	2834.3	0.02	82856	3166	2517
KCK Industries	42.5	2.53	345000	13600	2437
Pioneer	40.33	3.17	189050	7740	2342
Awfis Space Sol	574.75	2.9	4422295	204732	2060
Tarsons Product	357.45	-4.36	658869	37422	1661
Reliable Data S	89.87	7.98	652229	38115	1611
LE Travenues Te	252.51	5.86	21360585	1271544	1580
HEUBACHIND	595.05	0.7	166507	10270	1521
Ganesh Benzo	97.65	6.66	2393417	168503	1320
Krishival Foods	378	5	15715	1200	1210
Astral Ltd	1270.6	-8.03	6160831	481496	1180
Alkem Lab	5148	6.26	837418	67150	1147
Prime Sec	273.5	2.97	239304	19221	1145

\* the Average Volume of last 5 days

Price Shockers - NSE				
Company name	LCP	Prv Close	% Chg	Volume
NDL Ventures	85.06	63.44	34.08	273445
Mirc Electronic	26.88	20.37	31.96	12346209
CL Educate	103.62	82.95	24.92	918364
Happy Square	89.35	74.7	19.61	88000
HBL Eng	692	599.8	15.37	17899056
Uniparts India	391.05	339.2	15.29	295317
Prajay Engineer	20.48	17.81	14.99	1055561
Hariom Pipe	498.65	440.45	13.21	1652685
WS Industries	86.26	76.31	13.04	286623
Shigan Quantum	88	78	12.82	1500
Rico Auto	75.81	67.45	12.39	3195958
Jayaswal Neco	59.99	53.39	12.36	145025105
Khandwala Sec	26.96	24.02	12.24	176250
VST Tillers	4995.1	4454	12.15	249669
Mahindra EPC	151.44	135.06	12.13	205432
Star Cement	290.62	259.77	11.88	12246295
Apex Frozen	248.82	222.98	11.59	2604905
Indian Card	301.5	270.5	11.46	268382
Ganesh Benzo	96.91	87.02	11.37	2463313
Balaxi Pharma	48.57	43.67	11.22	266171

\* the % price rise of the last 3 days



Nifty 50 stocks - Summary Details											
Symbol	LTP	Chng	% Chng	Volume (lacs)	Turnover (crs.)	52w High	Diff with 52w H	52w Low	Diff with 52w L	365 days % chng	30 days % chng
NIFTY 50	24487.40	-97.65	-0.40%	2369.89	22257.29	26277.35	6.81%	21743.65	12.62%	-2.25%	0.89%
ADANIENT	2294.50	11.10	0.49%	10.76	246.31	3211.00	28.54%	2025.00	13.31%	-10.76%	-28.37%
ADANIPTS	1328.20	-11.20	-0.84%	12.60	168.66	1524.25	12.86%	995.65	33.40%	-6.45%	-12.67%
APOLLOHOSP	7253.00	-6.00	-0.08%	3.42	248.06	7635.00	5.00%	6001.00	20.86%	0.97%	10.19%
ASIANPAINT	2479.80	-9.30	-0.37%	6.09	151.51	3394.90	26.96%	2124.75	16.71%	2.05%	-18.14%
AXISBANK	1070.00	-3.30	-0.31%	45.73	489.75	1281.65	16.51%	933.50	14.62%	-8.56%	-6.08%
BAJAJ-AUTO	8186.00	-89.00	-1.08%	1.85	152.42	12774.00	35.92%	7089.35	15.47%	2.58%	-15.27%
BAJAJFINSV	1905.00	-17.80	-0.93%	9.00	172.45	2135.00	10.77%	1523.25	25.06%	-4.68%	23.24%
BAJFINANCE	853.00	-24.80	-2.83%	82.57	711.62	978.80	12.85%	642.50	32.76%	-5.97%	-86.74%
BEL	380.25	-3.65	-0.95%	93.27	355.80	436.00	12.79%	240.25	58.27%	-6.21%	27.04%
BHARTIARTL	1850.20	-7.20	-0.39%	46.45	861.09	2045.80	9.56%	1445.00	28.04%	-3.36%	26.86%
CIPLA	1520.00	15.20	1.01%	9.10	138.04	1702.05	10.70%	1335.00	13.86%	1.33%	-4.44%
COALINDIA	385.00	2.50	0.65%	48.60	186.94	543.55	29.17%	349.25	10.24%	0.41%	-27.80%
DRREDDY	1218.70	-0.80	-0.07%	9.22	112.26	1421.49	14.27%	1020.00	19.48%	-2.81%	-82.61%
EICHERMOT	5657.50	-14.00	-0.25%	4.30	243.29	5906.50	4.22%	4508.75	25.48%	1.05%	17.41%
GRASIM	2737.60	-11.30	-0.41%	5.53	151.12	2896.00	5.47%	2276.95	20.23%	-0.11%	7.24%
HCLTECH	1498.00	10.00	0.67%	34.23	514.03	2012.20	25.55%	1302.75	14.99%	-9.17%	-6.41%
HDFCBANK	1969.70	-25.90	-1.30%	64.69	1279.86	2037.70	3.34%	1601.15	23.02%	0.60%	20.93%
HDFCLIFE	765.00	0.25	0.03%	19.96	153.03	820.75	6.79%	584.30	30.93%	0.76%	8.88%
HEROMOTOCO	4644.00	81.80	1.79%	7.24	335.79	6246.25	25.65%	3344.00	38.88%	8.14%	-12.39%
HINDALCO	666.00	-6.85	-1.02%	122.37	817.27	772.65	13.80%	546.45	21.88%	0.28%	8.02%
HINDUNILVR	2484.00	-34.40	-1.37%	14.06	351.29	3035.00	18.15%	2136.00	16.29%	-0.05%	-8.33%
ICICIBANK	1421.40	-4.20	-0.29%	59.14	842.79	1500.00	5.24%	1153.00	23.28%	1.03%	22.62%
INDUSINDBK	782.00	-1.25	-0.16%	14.63	114.89	1498.00	47.80%	606.00	29.04%	-8.80%	-41.97%
INFY	1425.80	-2.40	-0.17%	98.99	1416.65	2006.45	28.94%	1307.00	9.09%	-10.45%	-19.34%
ITC	416.10	-0.75	-0.18%	136.36	569.20	528.50	21.27%	390.15	6.65%	0.01%	-15.94%
JIOFIN	326.90	-0.85	-0.26%	100.94	331.93	363.00	9.94%	198.65	64.56%	0.60%	0.66%
JSWSTEEL	1047.00	-5.70	-0.54%	12.31	129.55	1074.90	2.60%	880.00	18.98%	1.49%	16.31%
KOTAKBANK	1959.40	-16.50	-0.84%	15.78	310.29	2301.90	14.88%	1679.05	16.70%	-11.02%	11.65%
LT	3679.80	11.40	0.31%	22.80	843.61	3963.50	7.16%	2965.30	24.10%	3.61%	2.13%
M&M	3236.00	49.80	1.56%	33.16	1072.77	3303.00	2.03%	2425.00	33.44%	3.68%	15.90%
MARUTI	12847.00	250.00	1.98%	5.04	648.62	13541.65	5.13%	10725.00	19.79%	0.18%	3.05%
NESTLEIND	1090.00	-15.00	-1.36%	7.58	83.34	1389.00	21.53%	1055.00	3.32%	-54.03%	-55.88%
NTPC	340.15	4.00	1.19%	72.21	245.48	448.45	24.15%	292.80	16.17%	-1.91%	-18.14%
ONGC	235.37	1.58	0.68%	70.36	165.51	345.00	31.78%	205.00	14.81%	-3.30%	-29.70%
POWERGRID	284.45	-0.40	-0.14%	131.84	376.27	366.25	22.33%	247.30	15.02%	-4.59%	-17.67%
RELIANCE	1381.00	-5.20	-0.38%	122.44	1697.93	1551.00	10.96%	1114.85	23.87%	-7.29%	-52.99%
SBILIFE	1844.30	-6.70	-0.36%	6.28	115.84	1936.00	4.74%	1372.55	34.37%	0.86%	7.30%
SBIN	821.10	-2.35	-0.29%	79.86	657.29	875.45	6.21%	680.00	20.75%	1.83%	-0.10%
SHRIRAMFIN	611.60	-6.00	-0.97%	27.87	171.19	730.45	16.27%	493.35	23.97%	-7.58%	-79.12%
SUNPHARMA	1626.50	18.10	1.13%	16.79	272.66	1960.35	17.03%	1553.05	4.73%	-3.80%	-7.31%
TATACONSUM	1047.70	-11.40	-1.08%	6.52	68.62	1234.30	15.12%	882.90	18.67%	-1.64%	-10.71%
TATAMOTORS	655.05	1.30	0.20%	112.12	734.78	1142.00	42.64%	535.75	22.27%	-4.11%	-38.79%
TATASTEEL	160.13	1.61	1.02%	200.54	322.11	170.18	5.91%	122.62	30.59%	-0.83%	4.42%
TCS	3039.80	-1.00	-0.03%	33.58	1026.73	4592.25	33.81%	2991.60	1.61%	-6.90%	-28.09%
TECHM	1511.20	30.10	2.03%	25.33	382.25	1807.70	16.40%	1209.40	24.95%	-7.58%	-1.70%
TITAN	3485.00	17.10	0.49%	9.29	325.60	3867.00	9.88%	2925.00	19.15%	3.16%	4.09%
TRENT	5368.00	-75.50	-1.39%	4.42	238.53	8345.00	35.67%	4488.00	19.61%	1.48%	-13.26%
ULTRACEMCO	12440.00	35.00	0.28%	3.34	416.45	12714.00	2.16%	10047.85	23.81%	-0.72%	9.78%
WIPRO	241.30	-0.32	-0.13%	81.01	197.13	324.60	25.66%	228.00	5.83%	-6.46%	-50.82%
ETERNAL	305.30	-4.10	-1.33%	208.34	638.69	314.45	2.91%	194.80	56.72%	17.49%	#VALUE!

## Disclaimer / Disclosures

### ANALYST CERTIFICATION

I, Mrs. Vaishali Parekh B.com, Research Analyst, author and the name subscribed to this report, hereby certify that all of the views expressed in this research report accurately reflect our views about the subject issuer(s) or securities. We also certify that no part of our compensation was, is, or will be directly or indirectly related to the specific recommendation(s) or view(s) in this report.

Terms & conditions and other disclosures:

Prabhudas Lilladher Pvt. Ltd, Mumbai, India (hereinafter referred to as "PL") is engaged in the business of Stock Broking, Portfolio Manager, Depository Participant and distribution for third party financial products. PL is a subsidiary of Prabhudas Lilladher Advisory Services Pvt Ltd. which has its various subsidiaries engaged in business of commodity broking, investment banking, financial services (margin funding) and distribution of third party financial/other products, details in respect of which are available at [www.plindia.com](http://www.plindia.com)

This document has been prepared by the Research Division of PL and is meant for use by the recipient only as information and is not for circulation. This document is not to be reported or copied or made available to others without prior permission of PL. It should not be considered or taken as an offer to sell or a solicitation to buy or sell any security.

The information contained in this report has been obtained from sources that are considered to be reliable. However, PL has not independently verified the accuracy or completeness of the same. Neither PL nor any of its affiliates, its directors or its employees accepts any responsibility of whatsoever nature for the information, statements and opinion given, made available or expressed herein or for any omission therein.

Recipients of this report should be aware that past performance is not necessarily a guide to future performance and value of investments can go down as well. The suitability or otherwise of any investments will depend upon the recipient's particular circumstances and, in case of doubt, advice should be sought from an independent expert/advisor.

Either PL or its affiliates or its directors or its employees or its representatives or its clients or their relatives may have position(s), make market, act as principal or engage in transactions of securities of companies referred to in this report and they may have used the research material prior to publication.

PL may from time to time solicit or perform investment banking or other services for any company mentioned in this document.

PL is registered as Research Analyst under Securities and Exchange Board of India (Research Analysts) Regulations, 2014 PL submits that no material disciplinary action has been taken on us by any Regulatory Authority impacting Equity Research Analysis activities.

PL or its research analysts or its associates or his relatives do not have any financial interest in the subject company.

PL or its research analysts or its associates or his relatives do not have actual/beneficial ownership of one per cent or more securities of the subject company at the end of the month immediately preceding the date of publication of the research report.

PL or its research analysts or its associates or his relatives do not have any material conflict of interest at the time of publication of the research report.

PL or its associates might have received compensation from the subject company in the past twelve months.

PL or its associates might have managed or co-managed public offering of securities for the subject company in the past twelve months or mandated by the subject company for any other assignment in the past twelve months.

PL or its associates might have received any compensation for investment banking or merchant banking or brokerage services from the subject company in the past twelve months.

PL or its associates might have received any compensation for products or services other than investment banking or merchant banking or brokerage services from the subject company in the past twelve months PL or its associates might have received any compensation or other benefits from the subject company or third party in connection with the research report.

PL encourages independence in research report preparation and strives to minimize conflict in preparation of research report. PL or its analysts did not receive any compensation or other benefits from the subject Company or third party in connection with the preparation of the research report. PL or its Research Analysts do not have any material conflict of interest at the time of publication of this report.

It is confirmed that Mrs. Vaishali Parekh B.com, Research Analyst of this report has not received any compensation from the companies mentioned in the report in the preceding twelve months compensation of our Research Analysts is not based on any specific merchant banking, investment banking or brokerage service transactions.

The Research analysts for this report certifies that all of the views expressed in this report accurately reflect his or her personal views about the subject company or companies and its or their securities, and no part of his or her compensation was, is or will be, directly or indirectly related to specific recommendations or views expressed in this report.

The research analysts for this report has not served as an officer, director or employee of the subject company PL or its research analysts have not engaged in market making activity for the subject company

Our sales people, traders, and other professionals or affiliates may provide oral or written market commentary or trading strategies to our clients that reflect opinions that are contrary to the opinions expressed herein, and our proprietary trading and investing businesses may make investment decisions that are inconsistent with the recommendations expressed herein. In reviewing these materials, you should be aware that any or all of the foregoing, among other things, may give rise to real or potential conflicts of interest.

PL and its associates, their directors and employees may (a) from time to time, have a long or short position in, and buy or sell the securities of the subject company or (b) be engaged in any other transaction involving such securities and earn brokerage or other compensation or act as a market maker in the financial instruments of the subject company or act as an advisor or lender/borrower to the subject company or may have any other potential conflict of interests with respect to any recommendation and other related information and opinions.