

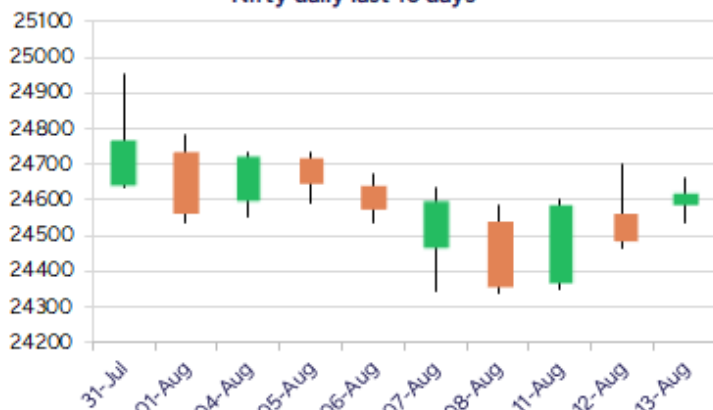
Date: 14th August 2025

* Sensex 80539.91 + 304.32

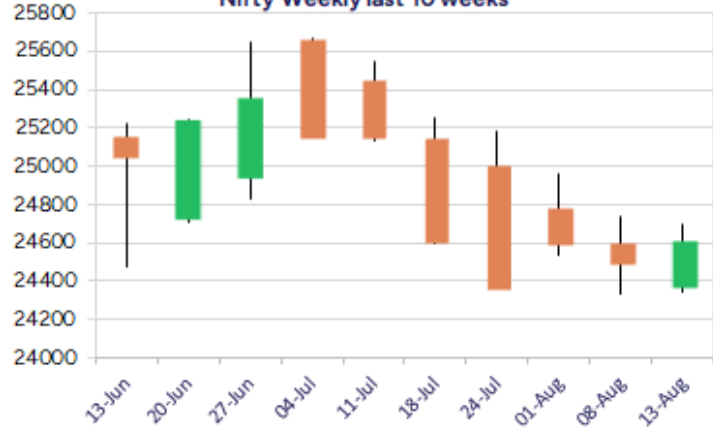
* Nifty 24619.35 + 131.95

* Bank Nifty 55181.45 + 137.75

Nifty daily last 10 days



Nifty Weekly last 10 weeks



*Blue candle → Close rate > Open rate * Red candle → Close rate < Open rate

Market Preview

Nifty ends above 24600 zone

Nifty opened with a gap up opening above the 24500 zone and as the day progressed witnessed a gradual rise to end above the 24600 level with hopes kept alive anticipating for further upward move in the coming sessions. BankNifty lacked the momentum with sluggish move and managed to hover near the 55200 zone for most part of the trading session. The market breadth was slightly on the positive side with the advance decline indicating a ratio of 3:2 at close.

Market Forecast

Nifty daily range 24500-24800

Nifty after opening on a positive note above the 24500-zone managed to maintain the positive bias as the day progressed closing near the 24600 level with the broader markets showing some signs of improvement. As mentioned earlier, the index need to close above the 24800 zone to get some clarity and conviction to carry on with the positive move further ahead and at the same time, would need to sustain above the low made near 24300 zone as of now to maintain the bias intact.

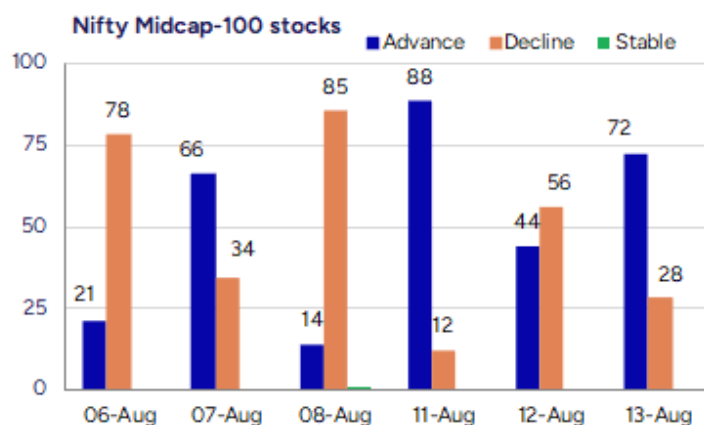
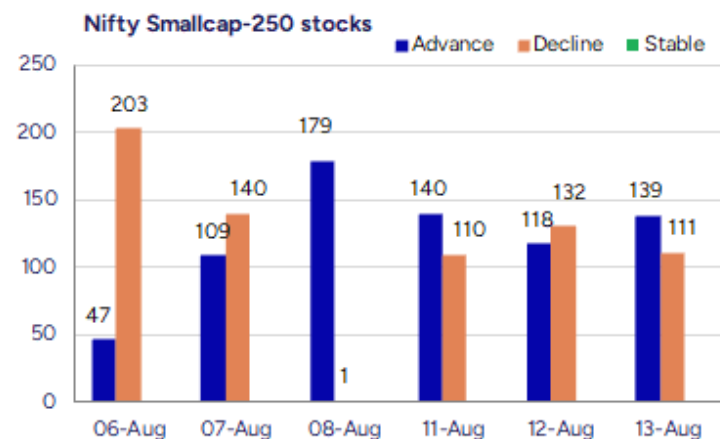
BankNifty, was once again overall sluggish with no clear directional move and would need a decisive breach above the 56000 zone to get some conviction and thereafter gain momentum. With the index precariously placed at current juncture, as said earlier, a decisive breach below the 54400 zone shall trigger for intensified selling pressure overall weakening the trend with next major support positioned near the important 200 period SMA at 52700 zone.

The support for the day is seen at 24500 levels while the resistance is seen at 24800 levels. BankNifty would have the daily range of 54700-55800 levels.

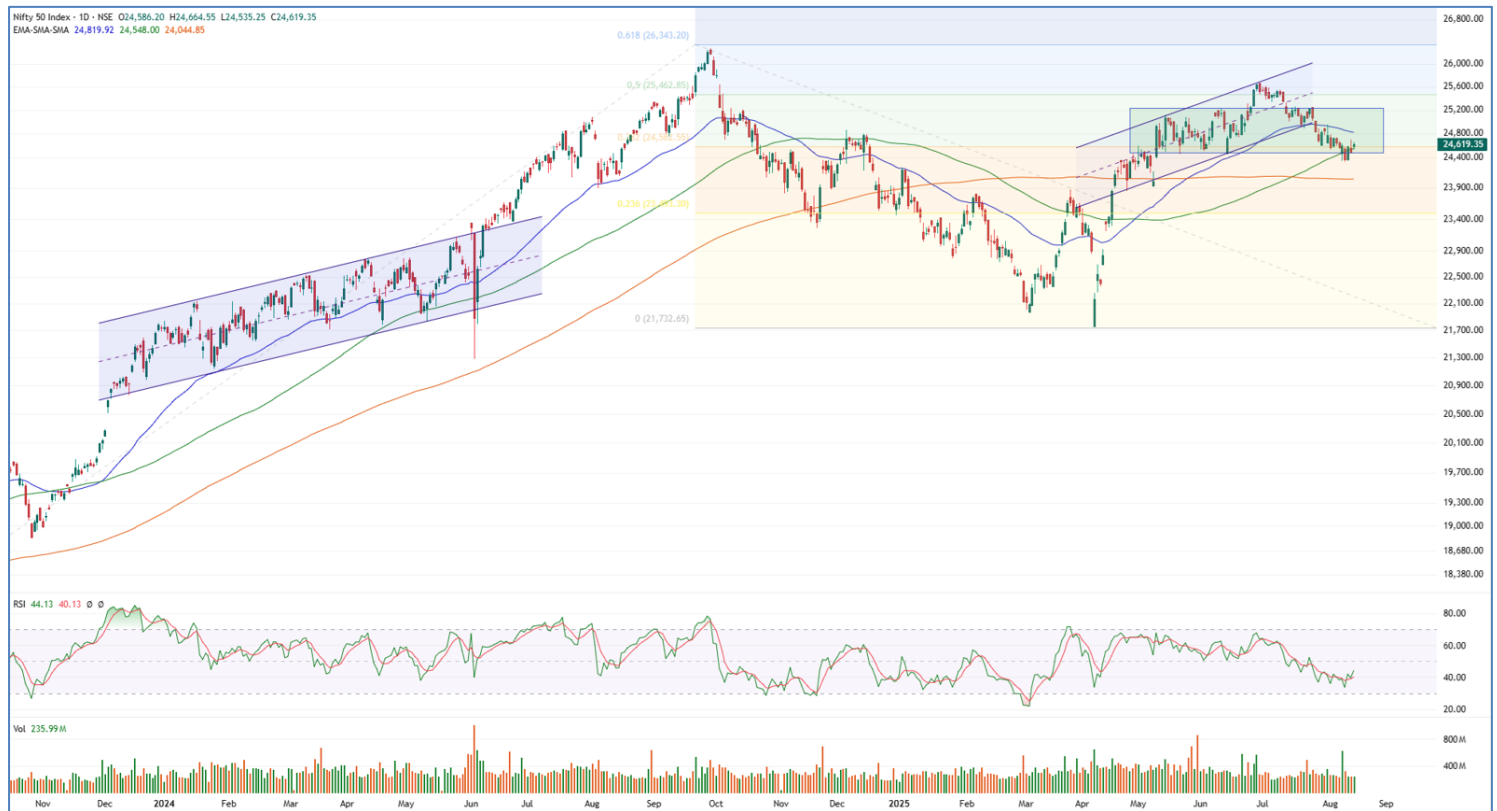
Indices	Period	Closing	% Chng	Trend	Reversal	2 Sup	1 Sup	Pivot	1 Res	2 Res
Nifty	Daily	24619.35	0.54%	3	24426.80	24477	24548	24606	24678	24736
	Weekly	24363.30	-0.82%	-5	25098.55	24083	24223	24479	24619	24874
	Monthly	24768.35	-2.93%	3	24708.35	23999	24384	24994	25379	25990
Bank Nifty	Daily	55181.45	0.25%	1	55003.35	54870	55026	55183	55339	55496
	Weekly	55004.90	-1.10%	-5	57061.40	54378	54692	55221	55534	56064
	Monthly	55961.95	-2.36%	4	55173.20	54361	55162	56360	57160	58359
Sensex	Daily	80539.91	0.38%	3	80052.00	80149	80345	80514	80709	80879
	Weekly	79857.79	-0.92%	-5	82214.45	78930	79394	80243	80707	81555
	Monthly	81185.58	-2.90%	-1	81149.00	78601	79893	81912	83205	85224

Gainers - Losers (Nifty 500 Stocks)

Gainers				Losers			
Company Name	Last Price	% Gain	Volume	Company Name	Last Price	% Loss	Volume
Aarvi Encon	120.55	20	963906	Arrow Greentech	620.7	-20	412825
NDL Ventures	102.07	20	1959213	Shree Pushkar	340.5	-15.09	814367
Priti Internati	93.9	20	384399	Shigan Quantum	77.1	-12.39	1500
NMDC Steel	43.02	20	96736890	CP Capital	139.79	-11.91	57375
Premier Explo	512.3	19.99	5874643	Insecticides	906.3	-11.36	782686
Surani Steel Tu	87.85	15.36	4000	RBZ Jewellers	132.07	-10.73	952977
JM Financial	187.07	15.01	92458455	S J Logistics	374.4	-10.33	257750



Nifty Daily chart with RSI indicator



BankNifty Daily chart with RSI indicator



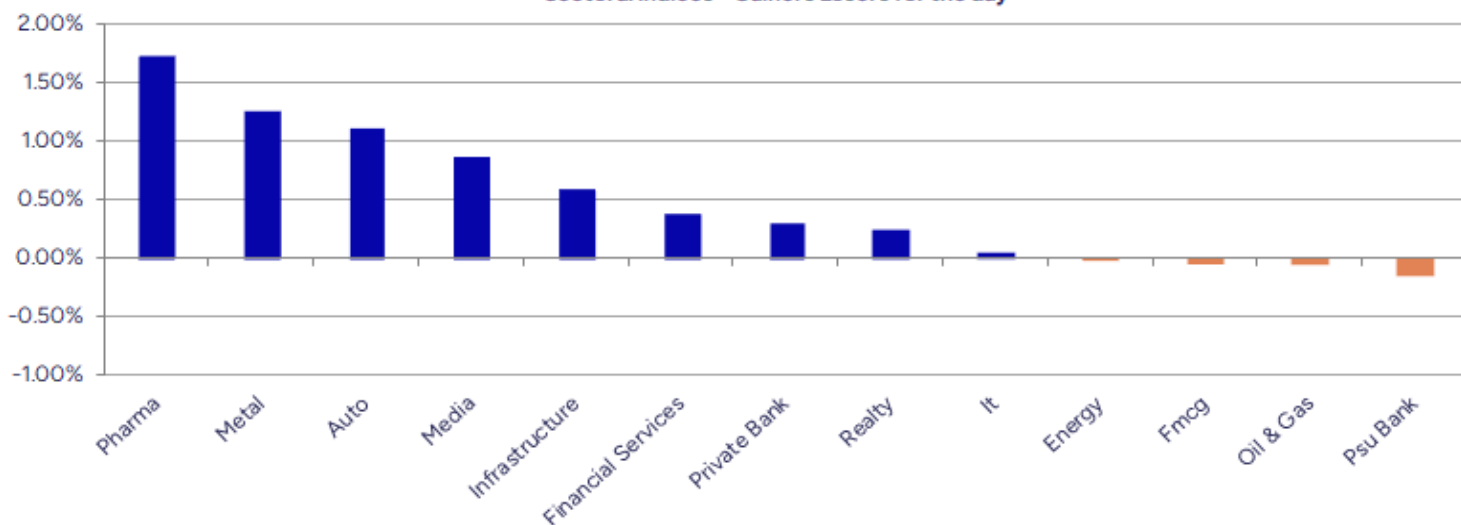
Breakouts - Cross above 200 DMA			
Company Name	LCP	Change %	200 DMA
Elh	418.45	12.31	372.59
Premier Explo	512.3	10.20	464.9
Windlas	1057.25	9.58	964.86
NMDC Steel	43.02	8.04	39.82
Barak Vally Cem	45.98	6.31	43.25
Virinchi	27.25	4.69	26.03
Lloyds Steels	71.03	4.23	68.15
Dolphin Offshor	434.25	3.75	418.54
Strides Pharma	867.3	3.72	836.17
Elin Electronic	177.58	3.72	171.21
IFGL Refractory	232.82	3.31	225.36
Elh Assoc Hotel	390.05	3.23	377.85
Rico Auto	79.86	3.22	77.37
Rishabh Instru.	298.2	2.95	289.66
GlaxoSmithKline	2772.6	2.94	2693.41
Taj GVK Hotels	417.3	2.86	405.7
Vinsys IT	390.5	2.74	380.09
BOMDYEING	169.66	2.51	165.51

* Stocks crossing above its Simple Moving Average (200DMA)

Breakdown - Cross below 200 DMA			
Company Name	LCP	Change %	200 DMA
Arrow Greentech	620.7	-10.98	697.24
Jayshree Tea	101.71	-8.62	111.3
GVP Infotech	10.01	-5.12	10.55
Bodal Chemicals	66.09	-4.29	69.05
Khandwala Sec	24.7	-2.95	25.45
Shriram Propert	88.7	-2.89	91.34
Lakshmi Finance	206.24	-2.14	210.74
Inox India	1071.8	-1.90	1092.56
Indian Card	289.3	-1.61	294.03
Hind Composites	465.15	-1.58	472.64
Varroc Engineer	510.5	-1.43	517.88
Sequent Scienti	171.51	-1.15	173.5
Sapphire Foods	315.35	-1.15	319.03
Kothari Product	79.66	-1.14	80.58
Dhunseri Ventur	354.6	-0.91	357.85
Ortin Global	14.2	-0.70	14.3
PI Industries	3772.7	-0.68	3798.63
Suzlon Energy	60.38	-0.63	60.76

* Stocks crossing below its Simple Moving Average (200DMA)

Sectoral Indices - Gainers Losers for the day



Stocks witnessing a volume surge as compared to their 5 day average volume

Watch out for the stocks that have seen a huge spurt in its share price over the last three days

Volume Shockers - NSE					
Company name	LCP	% Chg	Volume	Avg Vol *	% Chg
Yatra Online	148.62	8.39	83161338	799733	10299
NMDC Steel	43.02	20	96736890	1502032	6340
ElH	418.45	14.8	10670884	249692	4174
Aarvi Encon	120.55	20	963906	24566	3824
AVT Natural	73.53	3.32	3137707	81122	3768
Priti Internati	93.9	20	384399	11913	3127
Windlas	1057.25	11.9	1109376	35427	3031
Sundrop Brands	872.95	8.89	196881	6406	2973
NR Agarwal	388.35	4.96	184045	6541	2714
Aspinwall	271.1	-0.37	62916	2494	2423
NDL Ventures	102.07	20	1959213	84252	2225
Medico Remedies	42.41	9.14	1241983	59138	2000
Nakoda Group	26.14	0	438256	21152	1972
Premier Explo	512.3	19.99	5874643	284384	1966
FSN E-Com (Nyka	215.04	5.08	45275368	2611580	1634
Godrej Ind	1175.3	7.26	1366820	87848	1456
Khandwala Sec	24.7	-8.38	589185	38584	1427
Archean Chem	694.15	6.51	2812779	206057	1265
Indo Amines	148.21	8.65	1461380	108827	1243
Ind-Swift	15.76	6.13	630284	48155	1209

* the Average Volume of last 5 days

Price Shockers - NSE				
Company name	LCP	Prv Close	% Chg	Volume
NDL Ventures	102.07	63.44	60.89	1959213
Mirc Electronic	26.33	20.37	29.26	19293813
HBL Eng	763.4	599.8	27.28	16667458
CL Educate	103.91	82.95	25.27	169609
NMDC Steel	43.02	35.66	20.64	96736890
JM Financial	187.07	155.29	20.46	92458455
Aarvi Encon	120.55	100.49	19.96	963906
Premier Explo	512.3	432.35	18.49	5874643
Happy Square	88.45	74.7	18.41	142400
Rico Auto	79.86	67.45	18.4	4078893
WS Industries	90.24	76.31	18.25	1188695
ElH	418.45	355.7	17.64	10670884
VST Tillers	5227.8	4454	17.37	101895
Bafna Pharma	99.48	85.39	16.5	66960
Pavna Ind	418.5	360.6	16.06	27230
Shaily Engg	1853	1600.1	15.81	586589
Dreamfolks Ser.	151.7	131.05	15.76	113575
Blue Coast	74.57	64.42	15.76	411
Indo Tech Trans	1815.4	1568.3	15.76	10740
Bharat Seats	123.17	106.41	15.75	164394

* the % price rise of the last 3 days

Nifty 50 stocks - Summary Details											
Symbol	LTP	Chng	% Chng	Volume (lacs)	Turnover (crs.)	52w High	Diff with 52w H	52w Low	Diff with 52w L	365 days % chng	30 days % chng
NIFTY 50	24619.35	131.95	0.54%	2360.03	22842.77	26277.35	6.31%	21743.65	13.23%	-2.63%	0.58%
ADANIENT	2287.00	-1.20	-0.05%	8.34	189.99	3211.00	28.78%	2025.00	12.94%	-10.57%	-27.40%
ADANIPTS	1320.90	-9.60	-0.72%	12.06	159.84	1524.25	13.34%	995.65	32.67%	-7.07%	-11.38%
APOLLOHOSP	7830.00	593.50	8.20%	22.92	1762.38	7840.00	0.13%	6001.00	30.48%	0.65%	11.29%
ASIANPAINT	2501.00	22.70	0.92%	3.51	87.53	3394.90	26.33%	2124.75	17.71%	1.60%	-18.83%
AXISBANK	1066.90	-3.10	-0.29%	49.67	529.93	1281.65	16.76%	933.50	14.29%	-8.84%	-8.10%
BAJAJ-AUTO	8250.00	53.50	0.65%	3.68	303.33	12774.00	35.42%	7089.35	16.37%	1.61%	-15.59%
BAJAJFINSV	1917.00	9.00	0.47%	7.10	135.57	2135.00	10.21%	1523.25	25.85%	-5.41%	22.39%
BAJFINANCE	862.80	9.80	1.15%	101.17	865.71	978.80	11.85%	642.50	34.29%	-8.62%	-87.09%
BEL	388.85	8.50	2.23%	109.30	422.76	436.00	10.81%	240.25	61.85%	-7.07%	26.19%
BHARTIARTL	1870.90	20.60	1.11%	66.97	1248.63	2045.80	8.55%	1445.00	29.47%	-3.73%	26.85%
CIPLA	1560.00	38.40	2.52%	18.60	288.47	1702.05	8.35%	1335.00	16.85%	2.46%	-4.08%
COALINDIA	386.30	0.95	0.25%	42.17	162.93	543.55	28.93%	349.25	10.61%	1.16%	-26.45%
DRREDDY	1253.40	33.10	2.71%	11.92	148.70	1421.49	11.82%	1020.00	22.88%	-2.74%	-82.28%
EICHERMOT	5710.00	52.00	0.92%	4.28	244.56	5906.50	3.33%	4508.75	26.64%	0.81%	17.66%
GRASIM	2743.00	2.60	0.09%	4.80	131.72	2896.00	5.28%	2276.95	20.47%	-0.78%	6.58%
HCLTECH	1498.80	-0.30	-0.02%	29.16	437.42	2012.20	25.51%	1302.75	15.05%	-8.50%	-5.43%
HDFCBANK	1979.90	10.00	0.51%	67.89	1342.18	2037.70	2.84%	1601.15	23.65%	-0.70%	18.66%
HDFCLIFE	778.00	11.80	1.54%	17.21	133.78	820.75	5.21%	584.30	33.15%	0.95%	9.08%
HEROMOTOCO	4754.50	109.30	2.35%	13.43	638.46	6246.25	23.88%	3344.00	42.18%	10.11%	-12.55%
HINDALCO	701.00	33.95	5.09%	131.51	917.18	772.65	9.27%	546.45	28.28%	-0.58%	5.99%
HINDUNILVR	2493.40	9.60	0.39%	9.70	241.33	3035.00	17.85%	2136.00	16.73%	-1.42%	-9.64%
ICICIBANK	1421.80	-0.20	-0.01%	90.09	1280.45	1500.00	5.21%	1153.00	23.31%	0.01%	21.25%
INDUSINDBK	773.20	-9.85	-1.26%	41.14	318.61	1498.00	48.38%	606.00	27.59%	-8.83%	-42.03%
INFY	1426.40	2.30	0.16%	103.18	1472.55	2006.45	28.91%	1307.00	9.14%	-10.71%	-20.77%
ITC	414.20	-2.15	-0.52%	108.75	451.10	528.50	21.63%	390.15	6.16%	-0.11%	-15.82%
JIOFIN	330.80	3.80	1.16%	113.63	375.73	363.00	8.87%	198.65	66.52%	0.37%	-0.65%
JSWSTEEL	1055.00	6.80	0.65%	11.26	118.71	1074.90	1.85%	880.00	19.89%	1.06%	14.26%
KOTAKBANK	1988.70	29.70	1.52%	27.47	545.17	2301.90	13.61%	1679.05	18.44%	-11.78%	10.52%
LT	3692.00	5.90	0.16%	12.27	454.31	3963.50	6.85%	2965.30	24.51%	4.11%	3.20%
M&M	3294.00	57.50	1.78%	24.36	797.31	3303.00	0.27%	2425.00	35.84%	5.31%	19.09%
MARUTI	12839.00	-1.00	-0.01%	2.52	323.96	13541.65	5.19%	10725.00	19.71%	2.12%	4.62%
NESTLEIND	1099.50	8.40	0.77%	8.14	88.97	1389.00	20.84%	1055.00	4.22%	-54.60%	-55.88%
NTPC	339.80	-0.30	-0.09%	54.17	184.61	448.45	24.23%	292.80	16.05%	-0.76%	-15.16%
ONGC	238.50	2.98	1.27%	85.02	202.89	345.00	30.87%	205.00	16.34%	-2.58%	-30.99%
POWERGRID	288.70	4.05	1.42%	99.28	286.01	366.25	21.17%	247.30	16.74%	-4.66%	-16.56%
RELIANCE	1384.00	3.60	0.26%	74.57	1032.19	1551.00	10.77%	1114.85	24.14%	-7.68%	-52.75%
SBILIFE	1846.10	8.10	0.44%	5.71	105.46	1936.00	4.64%	1372.55	34.50%	0.15%	7.80%
SBIN	821.55	0.95	0.12%	44.47	365.71	875.45	6.16%	680.00	20.82%	1.48%	0.98%
SHRIRAMFIN	619.85	7.95	1.30%	53.26	327.42	730.45	15.14%	493.35	25.64%	-8.43%	-79.44%
SUNPHARMA	1640.90	18.70	1.15%	13.14	214.78	1960.35	16.30%	1553.05	5.66%	-2.98%	-6.44%
TATACONSUM	1057.50	10.70	1.02%	5.02	52.76	1234.30	14.32%	882.90	19.78%	-2.79%	-10.59%
TATAMOTORS	663.30	9.20	1.41%	75.57	501.60	1142.00	41.92%	535.75	23.81%	-4.06%	-39.22%
TATASTEEL	160.35	0.19	0.12%	180.79	291.19	170.18	5.78%	122.62	30.77%	0.20%	5.33%
TCS	3035.00	-0.40	-0.01%	21.48	652.55	4592.25	33.91%	2991.60	1.45%	-7.06%	-27.65%
TECHM	1504.00	-5.30	-0.35%	18.15	273.68	1807.70	16.80%	1209.40	24.36%	-5.82%	-0.21%
TITAN	3471.80	-15.00	-0.43%	3.60	125.32	3867.00	10.22%	2925.00	18.69%	3.72%	5.00%
TRENT	5400.00	34.50	0.64%	6.16	333.46	8345.00	35.29%	4488.00	20.32%	0.03%	-15.93%
ULTRACEMCO	12411.00	-38.00	-0.31%	2.07	258.13	12714.00	2.38%	10047.85	23.52%	-0.37%	10.14%
WIPRO	241.55	-0.17	-0.07%	58.21	140.53	324.60	25.59%	228.00	5.94%	-6.42%	-50.57%
ETERNAL	312.90	7.00	2.29%	281.19	875.22	314.45	0.49%	194.80	60.63%	16.16%	#VALUE!

Disclaimer / Disclosures

ANALYST CERTIFICATION

I, Mrs. Vaishali Parekh B.com, Research Analyst, author and the name subscribed to this report, hereby certify that all of the views expressed in this research report accurately reflect our views about the subject issuer(s) or securities. We also certify that no part of our compensation was, is, or will be directly or indirectly related to the specific recommendation(s) or view(s) in this report.

Terms & conditions and other disclosures:

Prabhudas Lilladher Pvt. Ltd, Mumbai, India (hereinafter referred to as "PL") is engaged in the business of Stock Broking, Portfolio Manager, Depository Participant and distribution for third party financial products. PL is a subsidiary of Prabhudas Lilladher Advisory Services Pvt Ltd. which has its various subsidiaries engaged in business of commodity broking, investment banking, financial services (margin funding) and distribution of third party financial/other products, details in respect of which are available at www.plindia.com

This document has been prepared by the Research Division of PL and is meant for use by the recipient only as information and is not for circulation. This document is not to be reported or copied or made available to others without prior permission of PL. It should not be considered or taken as an offer to sell or a solicitation to buy or sell any security.

The information contained in this report has been obtained from sources that are considered to be reliable. However, PL has not independently verified the accuracy or completeness of the same. Neither PL nor any of its affiliates, its directors or its employees accepts any responsibility of whatsoever nature for the information, statements and opinion given, made available or expressed herein or for any omission therein.

Recipients of this report should be aware that past performance is not necessarily a guide to future performance and value of investments can go down as well. The suitability or otherwise of any investments will depend upon the recipient's particular circumstances and, in case of doubt, advice should be sought from an independent expert/advisor.

Either PL or its affiliates or its directors or its employees or its representatives or its clients or their relatives may have position(s), make market, act as principal or engage in transactions of securities of companies referred to in this report and they may have used the research material prior to publication.

PL may from time to time solicit or perform investment banking or other services for any company mentioned in this document.

PL is registered as Research Analyst under Securities and Exchange Board of India (Research Analysts) Regulations, 2014 PL submits that no material disciplinary action has been taken on us by any Regulatory Authority impacting Equity Research Analysis activities.

PL or its research analysts or its associates or his relatives do not have any financial interest in the subject company.

PL or its research analysts or its associates or his relatives do not have actual/beneficial ownership of one per cent or more securities of the subject company at the end of the month immediately preceding the date of publication of the research report.

PL or its research analysts or its associates or his relatives do not have any material conflict of interest at the time of publication of the research report.

PL or its associates might have received compensation from the subject company in the past twelve months.

PL or its associates might have managed or co-managed public offering of securities for the subject company in the past twelve months or mandated by the subject company for any other assignment in the past twelve months.

PL or its associates might have received any compensation for investment banking or merchant banking or brokerage services from the subject company in the past twelve months.

PL or its associates might have received any compensation for products or services other than investment banking or merchant banking or brokerage services from the subject company in the past twelve months PL or its associates might have received any compensation or other benefits from the subject company or third party in connection with the research report.

PL encourages independence in research report preparation and strives to minimize conflict in preparation of research report. PL or its analysts did not receive any compensation or other benefits from the subject Company or third party in connection with the preparation of the research report. PL or its Research Analysts do not have any material conflict of interest at the time of publication of this report.

It is confirmed that Mrs.Vaishali Parekh B.com, Research Analyst of this report has not received any compensation from the companies mentioned in the report in the preceding twelve months compensation of our Research Analysts is not based on any specific merchant banking, investment banking or brokerage service transactions.

The Research analysts for this report certifies that all of the views expressed in this report accurately reflect his or her personal views about the subject company or companies and its or their securities, and no part of his or her compensation was, is or will be, directly or indirectly related to specific recommendations or views expressed in this report.

The research analysts for this report has not served as an officer, director or employee of the subject company PL or its research analysts have not engaged in market making activity for the subject company

Our sales people, traders, and other professionals or affiliates may provide oral or written market commentary or trading strategies to our clients that reflect opinions that are contrary to the opinions expressed herein, and our proprietary trading and investing businesses may make investment decisions that are inconsistent with the recommendations expressed herein. In reviewing these materials, you should be aware that any or all of the foregoing, among other things, may give rise to real or potential conflicts of interest.

PL and its associates, their directors and employees may (a) from time to time, have a long or short position in, and buy or sell the securities of the subject company or (b) be engaged in any other transaction involving such securities and earn brokerage or other compensation or act as a market maker in the financial instruments of the subject company or act as an advisor or lender/borrower to the subject company or may have any other potential conflict of interests with respect to any recommendation and other related information and opinions.