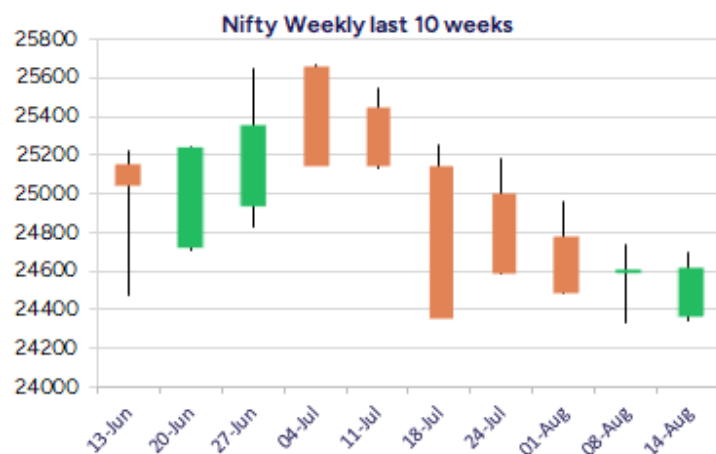
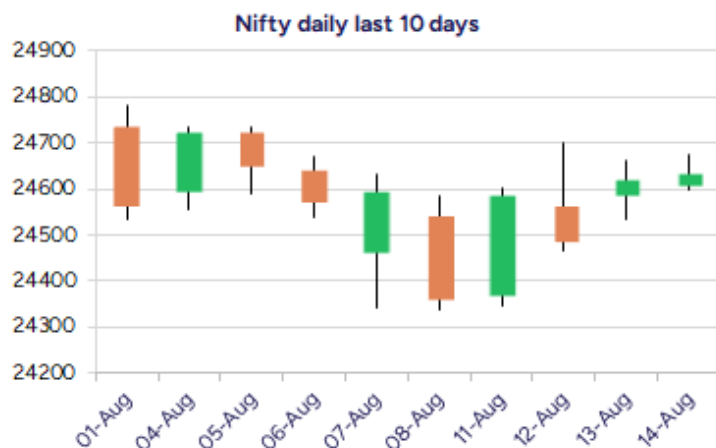


Date: 18th August 2025

* Sensex 80597.66 + 57.75

* Nifty 24631.30 + 11.95

* Bank Nifty 55341.85 + 160.40



*Blue candle → Close rate > Open rate * Red candle → Close rate < Open rate

Market Preview

Nifty ends the week on a flat note

Nifty once again witnessed a sluggish session with very narrow movement throughout the session to end on a flat note near 24650 zone. BankNifty was gripped within a narrow range between 55500 and 55200 zone with no clear direction as of now with bias and sentiment precariously placed. The market breadth ended on a weak note with the advance decline indicating a ratio of 2:3 at close.

Market Forecast

Nifty daily range 24500-24800

Nifty once again witnessed a narrow rangebound session hovering near the 24600 zone with bias still maintained with a cautious approach and would need to breach above the 24800 zone on the upside to establish conviction and clarity, thereafter to anticipate for further rise in the coming sessions. On the downside, as mentioned earlier, the index needs to sustain above the low made near 24300 zone as of now to maintain the bias intact.

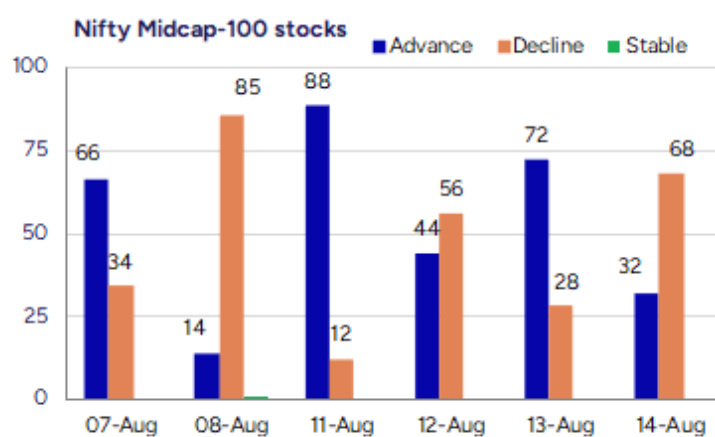
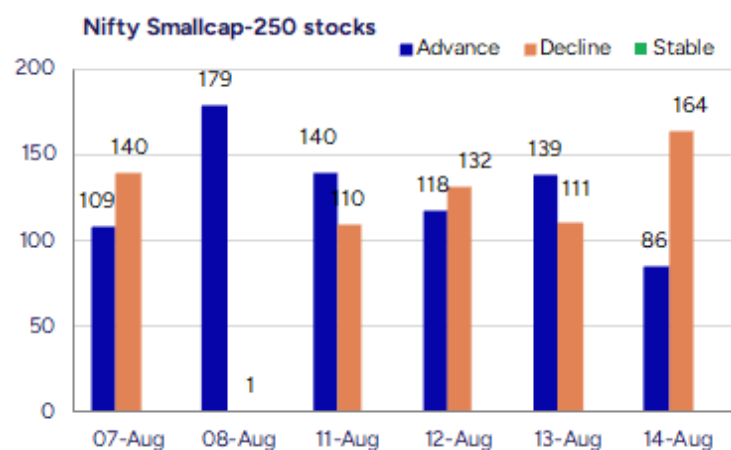
BankNifty, has been witnessing a narrow rangebound movement for quite some time gripped between the 55000 and 55700 zone desperately waiting for a decisive breakout on either side to get clarity and confirm a directional move in the coming days. With the index precariously placed at current juncture, as said earlier, a decisive breach below the 54400 zone shall trigger for intensified selling pressure overall weakening the trend with next major support positioned near the important 200 period SMA at 52700 zone.

The support for the day is seen at 24500 levels while the resistance is seen at 24800 levels. BankNifty would have the daily range of 54800-55800 levels.

Indices	Period	Closing	% Chng	Trend	Reversal	2 Sup	1 Sup	Pivot	1 Res	2 Res
Nifty	Daily	24631.30	0.05%	4	24462.95	24557	24594	24634	24671	24711
	Weekly	24631.30	1.10%	-6	24886.65	24208	24420	24561	24773	24914
	Monthly	24768.35	-2.93%	3	24708.35	23999	24384	24994	25379	25990
Bank Nifty	Daily	55341.85	0.29%	2	55018.50	54898	55120	55296	55518	55695
	Weekly	55341.85	0.61%	-6	56441.50	54652	54997	55280	55624	55907
	Monthly	55961.95	-2.36%	4	55173.20	54361	55162	56360	57160	58359
Sensex	Daily	80597.66	0.07%	4	80141.75	80352	80475	80613	80736	80874
	Weekly	80597.66	0.93%	-6	81512.65	79251	79924	80460	81133	81669
	Monthly	81185.58	-2.90%	-1	81149.00	78601	79893	81912	83205	85224

Gainers - Losers (Nifty 500 Stocks)

Gainers				Losers			
Company Name	Last Price	% Gain	Volume	Company Name	Last Price	% Loss	Volume
Rishabh Instru	357.8	19.99	2895254	VRL Logistics	280.25	-49.74	227027
Digispice Tech	27.13	19.99	1754051	HPL Electric	483.5	-18.42	2183354
Newmalayalam	36.4	19.93	222400	JITF Infralogis	293.3	-12.58	201304
Kotyark Ind	263.85	19.42	60800	Laxmi India Fin	131.85	-11.96	4330574
Jeena Sikho	659.75	17.67	2021959	Arrow Greentech	550.2	-11.36	428412
Everest Kanto	152.97	16.45	32225392	Atlantaa	31.1	-10.48	159346
Rico Auto	91.76	14.9	43754002	Surya Roshni	270.2	-10.13	1938925



Nifty Daily chart with RSI indicator



BankNifty Daily chart with RSI indicator

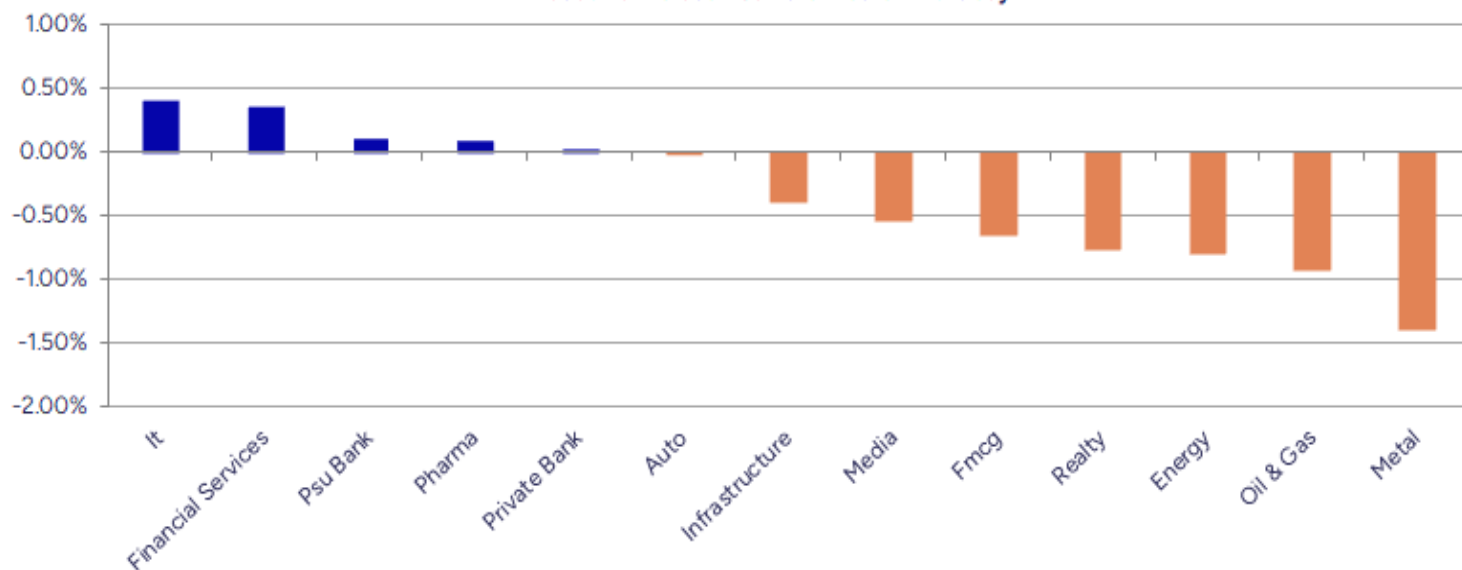


Breakouts - Cross above 200 DMA				Breakdown - Cross below 200 DMA			
Company Name	LCP	Change %	200 DMA	Company Name	LCP	Change %	200 DMA
Digispice Tech	27.13	13.18	23.97	VRL Logistics	280.25	-46.81	526.84
Kellton Tech	27.22	2.56	26.54	Veto Switch	111.34	-8.01	121.04
Tata Comm	1694.9	2.31	1656.65	Rubfila Intl	71.75	-6.50	76.74
CRISIL	5339.5	2.12	5228.53	HPL Electric &	483.5	-3.47	500.86
Everest Kanto	152.97	2.11	149.81	Heranba	333.15	-2.47	341.58
Sequent Scienti	175.77	1.34	173.45	TIL	279.9	-2.42	286.85
APL Apollo	1608.5	1.14	1590.36	Murudeshwar Cer	41.7	-2.36	42.71
Enfuse Solution	228.5	1.13	225.95	Navkar Corp	118.58	-2.33	121.41
Shivalik Bimeta	523.35	1.07	517.79	ANDHRSUGAR	80.94	-2.26	82.81
Neuland Lab	13278	1.04	13141.35	Madras Fert	87.46	-2.22	89.45
Medplus Health	813.8	0.82	807.21	Veranda Learnin	224.43	-2.21	229.51
MphasiS	2720.2	0.81	2698.25	D-Link India	491.25	-2.04	501.48
Rane Madras	808	0.44	804.45	Mahanagar Gas	1313.7	-1.94	1339.65
Varroc Engineer	519.85	0.40	517.77	Shalby	203.2	-1.92	207.17
Jamna Auto	90.61	0.18	90.45	Omaxe	92.34	-1.81	94.04
Amrutanjan Heal	689.15	0.17	688	Patanjali Foods	1764.8	-1.77	1796.53
Happy Forgings	945.95	0.16	944.48	Tasty Bite	9942	-1.70	10114.01
Network People	2301.8	0.15	2298.24	Sundrop Brands	851.55	-1.43	863.94

* Stocks crossing above its Simple Moving Average (200DMA)

* Stocks crossing below its Simple Moving Average (200DMA)

Sectoral Indices - Gainers Losers for the day



Stocks witnessing a volume surge as compared to their 5 day average volur

Watch out for the stocks that have seen a huge spurt in its share price over the last three days

Volume Shockers - NSE					
Company name	LCP	% Chg	Volume	Avg Vol *	% Chg
Everest Kanto	152.97	16.45	32225392	233066	13727
Jeena Sikho	659.75	17.67	2021959	18612	10764
Madhav Marbles	44.31	3.55	453657	4595	9774
Swelect Energy	738.35	11.19	987524	10958	8912
OnMobile Global	54.8	1.39	7917056	154817	5014
Shivalik Bimeta	523.35	5.22	2057713	52137	3847
HINDWAREAP	310.05	12.38	2958820	80816	3561
Aries Agro	391.6	9.19	2043158	69771	2828
Rishabh Instru.	357.8	19.99	2895254	101538	2751
Rico Auto	91.76	14.9	43754002	1556557	2711
CP Capital	143.78	2.85	492157	17692	2682
Muthoot Finance	2757.4	9.86	8764995	321889	2623
Pfizer	5328	4.33	431980	17755	2333
Newgen Software	886.45	3.71	9142125	484859	1786
Atal	19.69	2.55	1858624	100889	1742
Maha Rasht Apex	112.52	10	52057	3020	1624
AstraZeneca	8314.5	-1.21	257269	15790	1529
KCK Industries	42.6	1.91	200000	13600	1371
Yatra Online	141.69	-4.66	11665393	799733	1359
Lotus Eye Care	76.71	1.29	264665	18415	1337

* the Average Volume of last 5 days

Price Shockers - NSE				
Company name	LCP	Prv Close	% Chg	Volume
NDL Ventures	99.93	70.89	40.96	1009448
Newmalayalam	36.4	26.7	36.33	222400
Rico Auto	91.76	68.03	34.88	43754002
Digispice Tech	27.13	21.22	27.85	1754051
Premier Explo	532	433	22.86	4954766
Shreeoswal Seed	14.48	11.95	21.17	112468
Aarvi Encon	124.12	103.14	20.34	902885
Bafna Pharma	109.42	91.91	19.05	85483
WS Industries	85.45	71.89	18.86	70003
Mohit Ind	37.04	31.52	17.51	197424
Stallion India	133.09	114.54	16.2	1179015
JM Financial	185.89	159.99	16.19	23446361
Everest Kanto	152.97	132.02	15.87	32225392
Indo Tech Trans	1906.1	1646.7	15.75	9918
Blue Coast	78.29	67.64	15.75	1813
Mangalam Organ	551.05	476.1	15.74	1803
Voler Car	185.3	160.1	15.74	348800
RS Software	80.98	69.97	15.74	38863
Thomas Scott	336.6	290.85	15.73	37260
Manugraph Ind	22.36	19.33	15.68	8526

* the % price rise of the last 3 days

Nifty 50 stocks - Summary Details											
Symbol	LTP	Chng	% Chng	Volume (lacs)	Turnover (crs.)	52w High	Diff with 52w H	52w Low	Diff with 52w L	365 days % chng	30 days % chng
NIFTY 50	24631.30	11.95	0.05%	2701.33	22373.63	26277.35	6.26%	21743.65	13.28%	-1.85%	1.99%
ADANIENT	2279.50	-0.60	-0.03%	9.98	228.13	3211.00	29.01%	2025.00	12.57%	-11.67%	-26.26%
ADANIPTS	1301.40	-18.20	-1.38%	22.98	299.13	1517.45	14.24%	995.65	30.71%	-7.91%	-11.05%
APOLLOHOSP	7821.50	13.00	0.17%	6.73	525.54	7859.50	0.48%	6001.00	30.34%	8.15%	18.50%
ASIANPAINT	2530.00	29.80	1.19%	10.88	274.21	3394.90	25.48%	2124.75	19.07%	4.11%	-17.31%
AXISBANK	1068.00	2.00	0.19%	67.61	722.20	1281.65	16.67%	933.50	14.41%	-9.10%	-8.07%
BAJAJ-AUTO	8210.50	-38.00	-0.46%	3.64	299.48	12774.00	35.72%	7089.35	15.81%	1.99%	-14.71%
BAJAJFINSV	1920.60	6.20	0.32%	7.66	147.60	2135.00	10.04%	1523.25	26.09%	-4.45%	24.04%
BAJFINANCE	862.00	2.00	0.23%	53.79	462.78	978.80	11.93%	642.50	34.16%	-6.40%	-86.70%
BEL	384.70	-3.25	-0.84%	80.44	309.23	436.00	11.77%	240.25	60.12%	-4.53%	31.30%
BHARTIARTL	1871.00	3.60	0.19%	39.58	742.27	2045.80	8.54%	1446.50	29.35%	-2.79%	27.93%
CIPLA	1563.00	2.00	0.13%	25.36	396.38	1702.05	8.17%	1335.00	17.08%	5.19%	-1.42%
COALINDIA	384.10	-2.00	-0.52%	40.33	155.02	543.55	29.33%	349.25	9.98%	0.59%	-26.00%
DRREDDY	1251.00	-2.40	-0.19%	16.04	201.92	1421.49	11.99%	1020.00	22.65%	0.22%	-81.96%
EICHERMOT	5746.50	32.00	0.56%	4.15	238.86	5906.50	2.71%	4508.75	27.45%	3.14%	19.00%
GRASIM	2760.10	14.20	0.52%	6.19	170.36	2896.00	4.69%	2276.95	21.22%	-1.38%	9.00%
HCLTECH	1489.00	-12.10	-0.81%	42.27	634.71	2012.20	26.00%	1302.75	14.30%	-7.33%	-5.75%
HDFCBANK	1989.50	9.20	0.46%	87.55	1742.39	2037.70	2.37%	1601.15	24.25%	-0.14%	23.52%
HDFCLIFE	788.00	11.40	1.47%	28.62	225.42	820.75	3.99%	584.30	34.86%	1.55%	13.37%
HEROMOTOCO	4708.00	-60.70	-1.27%	3.74	176.74	6246.25	24.63%	3344.00	40.79%	12.16%	-9.09%
HINDALCO	695.70	-4.80	-0.69%	41.79	289.75	772.65	9.96%	546.45	27.31%	5.10%	12.73%
HINDUNILVR	2479.00	-16.10	-0.65%	11.04	275.04	3035.00	18.32%	2136.00	16.06%	-0.85%	-8.98%
ICICIBANK	1427.60	6.80	0.48%	75.78	1080.87	1500.00	4.83%	1153.00	23.82%	-0.15%	21.61%
INDUSINDBK	769.75	-3.70	-0.48%	18.59	143.56	1498.00	48.61%	606.00	27.02%	-10.85%	-42.73%
INFY	1448.00	21.40	1.50%	129.02	1873.15	2006.45	27.83%	1307.00	10.79%	-9.15%	-20.63%
ITC	411.45	-2.65	-0.64%	95.78	395.06	528.50	22.15%	390.15	5.46%	-1.26%	-15.49%
JIOFIN	327.35	-3.25	-0.98%	80.75	264.78	363.00	9.82%	198.65	64.79%	3.60%	2.26%
JSWSTEEL	1046.00	-7.70	-0.73%	8.71	91.04	1074.90	2.69%	880.00	18.86%	1.42%	16.07%
KOTAKBANK	1980.00	-7.70	-0.39%	19.85	393.52	2301.90	13.98%	1679.05	17.92%	-9.81%	13.45%
LT	3672.10	-21.60	-0.58%	17.69	649.22	3963.50	7.35%	2965.30	23.84%	5.66%	4.00%
M&M	3265.00	-17.20	-0.52%	15.09	494.34	3313.50	1.46%	2425.00	34.64%	6.15%	20.76%
MARUTI	12905.00	71.00	0.55%	3.19	411.05	13541.65	4.70%	10725.00	20.33%	2.56%	5.40%
NESTLEIND	1088.50	-8.40	-0.77%	9.42	102.70	1389.00	21.63%	1055.00	3.18%	-54.16%	-55.85%
NTPC	339.00	-0.95	-0.28%	56.89	192.57	448.45	24.41%	292.80	15.78%	-0.63%	-14.20%
ONGC	236.60	-2.07	-0.87%	72.58	171.84	345.00	31.42%	205.00	15.41%	-2.27%	-28.95%
POWERGRID	288.65	0.45	0.16%	84.64	244.44	366.25	21.19%	247.30	16.72%	-3.35%	-14.47%
RELIANCE	1372.90	-4.20	-0.30%	71.26	979.90	1551.00	11.48%	1114.85	23.15%	-6.81%	-52.77%
SBILIFE	1843.30	3.00	0.16%	4.68	86.21	1936.00	4.79%	1372.55	34.30%	-0.59%	9.39%
SBIN	825.50	3.65	0.44%	70.87	585.44	875.45	5.71%	680.00	21.40%	1.61%	3.05%
SHRIRAMFIN	615.90	-3.35	-0.54%	42.79	263.37	730.45	15.68%	493.35	24.84%	-7.54%	-78.58%
SUNPHARMA	1638.60	-1.20	-0.07%	17.38	285.00	1960.35	16.41%	1553.05	5.51%	-2.54%	-5.76%
TATACONSUM	1045.40	-10.70	-1.01%	7.68	80.82	1234.30	15.30%	882.90	18.41%	-1.46%	-10.41%
TATAMOTORS	664.00	0.25	0.04%	62.50	414.02	1142.00	41.86%	535.75	23.94%	-1.59%	-36.99%
TATASTEEL	155.68	-4.50	-2.81%	472.47	739.75	170.18	8.52%	122.62	26.96%	-0.16%	7.59%
TCS	3022.50	-13.70	-0.45%	33.42	1013.38	4592.25	34.18%	2991.60	1.03%	-5.79%	-27.66%
TECHM	1488.20	-18.10	-1.20%	17.15	257.72	1807.70	17.67%	1209.40	23.05%	-4.47%	0.19%
TITAN	3485.00	18.20	0.52%	5.98	208.53	3867.00	9.88%	2925.00	19.15%	1.82%	2.46%
TRENT	5367.50	-31.00	-0.57%	6.97	376.22	8345.00	35.68%	4488.00	19.60%	1.58%	-15.41%
ULTRACEMCO	12299.00	-102.00	-0.82%	2.36	289.82	12714.00	3.26%	10047.85	22.40%	-0.92%	10.02%
WIPRO	246.50	4.85	2.01%	128.56	317.03	324.60	24.06%	228.00	8.11%	-4.96%	-50.73%
ETERNAL	317.70	5.35	1.71%	458.92	1451.14	319.80	0.66%	194.80	63.09%	15.43%	#VALUE!

Disclaimer / Disclosures

ANALYST CERTIFICATION

I, Mrs. Vaishali Parekh B.com, Research Analyst, author and the name subscribed to this report, hereby certify that all of the views expressed in this research report accurately reflect our views about the subject issuer(s) or securities. We also certify that no part of our compensation was, is, or will be directly or indirectly related to the specific recommendation(s) or view(s) in this report.

Terms & conditions and other disclosures:

Prabhudas Lilladher Pvt. Ltd, Mumbai, India (hereinafter referred to as "PL") is engaged in the business of Stock Broking, Portfolio Manager, Depository Participant and distribution for third party financial products. PL is a subsidiary of Prabhudas Lilladher Advisory Services Pvt Ltd. which has its various subsidiaries engaged in business of commodity broking, investment banking, financial services (margin funding) and distribution of third party financial/other products, details in respect of which are available at www.plindia.com

This document has been prepared by the Research Division of PL and is meant for use by the recipient only as information and is not for circulation. This document is not to be reported or copied or made available to others without prior permission of PL. It should not be considered or taken as an offer to sell or a solicitation to buy or sell any security.

The information contained in this report has been obtained from sources that are considered to be reliable. However, PL has not independently verified the accuracy or completeness of the same. Neither PL nor any of its affiliates, its directors or its employees accepts any responsibility of whatsoever nature for the information, statements and opinion given, made available or expressed herein or for any omission therein.

Recipients of this report should be aware that past performance is not necessarily a guide to future performance and value of investments can go down as well. The suitability or otherwise of any investments will depend upon the recipient's particular circumstances and, in case of doubt, advice should be sought from an independent expert/advisor.

Either PL or its affiliates or its directors or its employees or its representatives or its clients or their relatives may have position(s), make market, act as principal or engage in transactions of securities of companies referred to in this report and they may have used the research material prior to publication.

PL may from time to time solicit or perform investment banking or other services for any company mentioned in this document.

PL is registered as Research Analyst under Securities and Exchange Board of India (Research Analysts) Regulations, 2014 PL submits that no material disciplinary action has been taken on us by any Regulatory Authority impacting Equity Research Analysis activities.

PL or its research analysts or its associates or his relatives do not have any financial interest in the subject company.

PL or its research analysts or its associates or his relatives do not have actual/beneficial ownership of one per cent or more securities of the subject company at the end of the month immediately preceding the date of publication of the research report.

PL or its research analysts or its associates or his relatives do not have any material conflict of interest at the time of publication of the research report.

PL or its associates might have received compensation from the subject company in the past twelve months.

PL or its associates might have managed or co-managed public offering of securities for the subject company in the past twelve months or mandated by the subject company for any other assignment in the past twelve months.

PL or its associates might have received any compensation for investment banking or merchant banking or brokerage services from the subject company in the past twelve months.

PL or its associates might have received any compensation for products or services other than investment banking or merchant banking or brokerage services from the subject company in the past twelve months PL or its associates might have received any compensation or other benefits from the subject company or third party in connection with the research report.

PL encourages independence in research report preparation and strives to minimize conflict in preparation of research report. PL or its analysts did not receive any compensation or other benefits from the subject Company or third party in connection with the preparation of the research report. PL or its Research Analysts do not have any material conflict of interest at the time of publication of this report.

It is confirmed that Mrs.Vaishali Parekh B.com, Research Analyst of this report has not received any compensation from the companies mentioned in the report in the preceding twelve months compensation of our Research Analysts is not based on any specific merchant banking, investment banking or brokerage service transactions.

The Research analysts for this report certifies that all of the views expressed in this report accurately reflect his or her personal views about the subject company or companies and its or their securities, and no part of his or her compensation was, is or will be, directly or indirectly related to specific recommendations or views expressed in this report.

The research analysts for this report has not served as an officer, director or employee of the subject company PL or its research analysts have not engaged in market making activity for the subject company

Our sales people, traders, and other professionals or affiliates may provide oral or written market commentary or trading strategies to our clients that reflect opinions that are contrary to the opinions expressed herein, and our proprietary trading and investing businesses may make investment decisions that are inconsistent with the recommendations expressed herein. In reviewing these materials, you should be aware that any or all of the foregoing, among other things, may give rise to real or potential conflicts of interest.

PL and its associates, their directors and employees may (a) from time to time, have a long or short position in, and buy or sell the securities of the subject company or (b) be engaged in any other transaction involving such securities and earn brokerage or other compensation or act as a market maker in the financial instruments of the subject company or act as an advisor or lender/borrower to the subject company or may have any other potential conflict of interests with respect to any recommendation and other related information and opinions.