

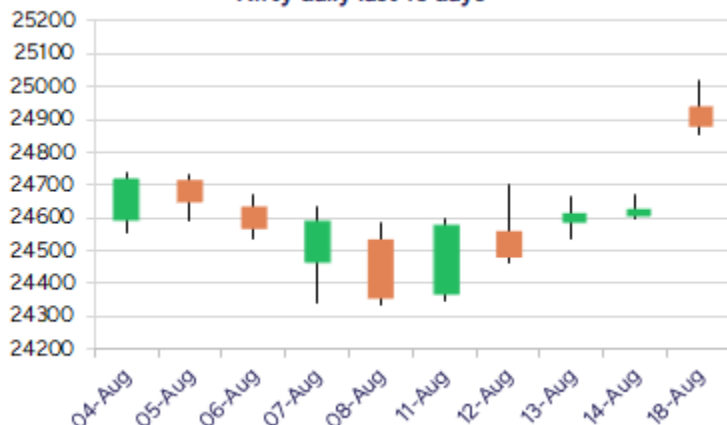
Date: 19th August 2025

* Sensex 81273.75 + 676.09

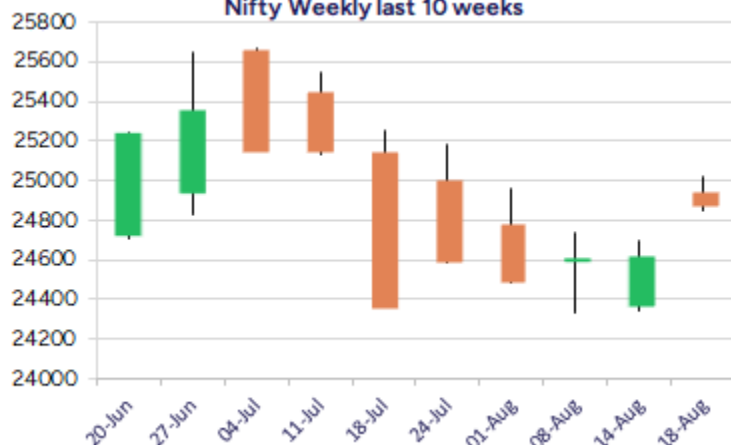
* Nifty 24876.95 + 245.65

* Bank Nifty 55734.90 + 393.05

Nifty daily last 10 days



Nifty Weekly last 10 weeks



*Blue candle → Close rate > Open rate * Red candle → Close rate < Open rate

Market Preview

Nifty above 50 EMA

Nifty witnessed a strong session moving past the 50EMA level of 24815, with overall bias improving and expecting a further rise in the coming sessions. Bank Nifty sustained above the 55600 level with bias maintained positive and can carry on with the positive move further ahead to breach above the 56000 zone. The market breadth was strong, with the advance decline indicating a ratio of 3:1 at close.

Market Forecast

Nifty daily range 24700 - 25100

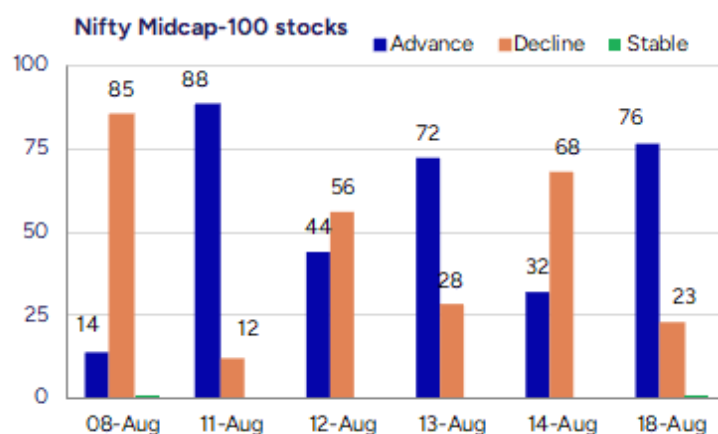
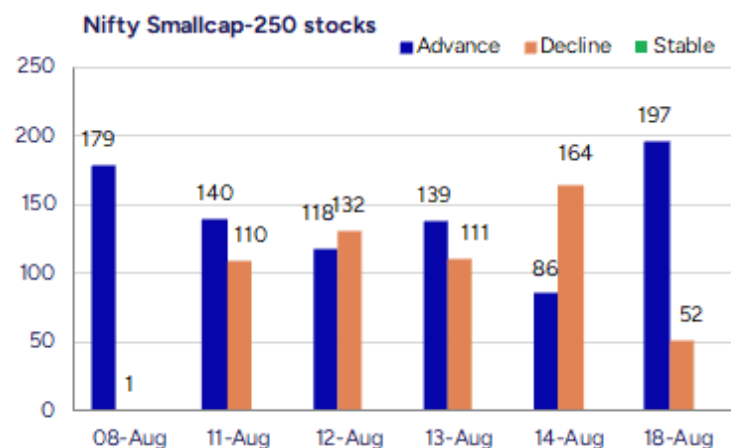
Nifty, after a long consolidation near the 100 EMA level, finally indicated a strong pullback with a bullish candle formation to close above 50EMA level of 24815 zone with bias and sentiment improving, and as mentioned earlier, a decisive breach above the 25100 level shall establish conviction, and thereafter, we can expect stability in the coming sessions. Active participation from the broader markets has eased out the pessimism to some extent, which can trigger further upward movement of the indices. BankNifty, taking support near the 100EMA level of the 54978 zone, has given an INSIDE BAR breakout above the 55600 zone during the intraday session, and we can expect a further rise with an initial target of the 56500-56800 level expected in the coming sessions. With the bias maintained intact till now, the crucial zone of the 55000 level needs to be sustained to anticipate further recovery on the index.

The support for the day is seen at 24700 levels, while the resistance is seen at 25100 levels. Bank Nifty would have the daily range of 55000-56300 levels.

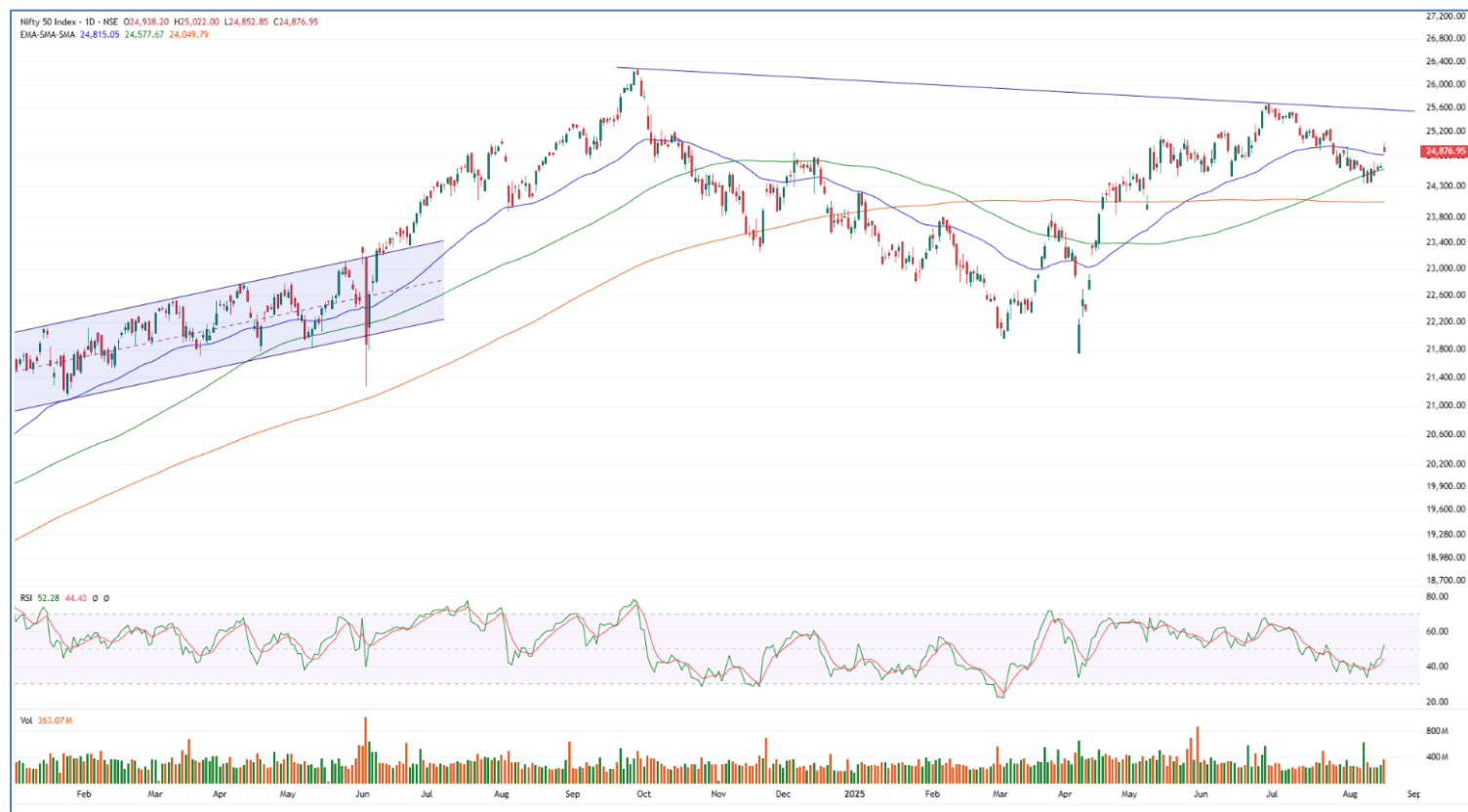
Indices	Period	Closing	% Chng	Trend	Reversal	2 Sup	1 Sup	Pivot	1 Res	2 Res
Nifty	Daily	24876.95	1.00%	5	24482.00	24748	24813	24917	24982	25086
	Weekly	24631.30	1.10%	-6	24886.65	24208	24420	24561	24773	24914
	Monthly	24768.35	-2.93%	3	24708.35	23999	24384	24994	25379	25990
Bank Nifty	Daily	55734.90	0.71%	3	55028.15	55338	55536	55846	56045	56355
	Weekly	55341.85	0.61%	-6	56441.50	54652	54997	55280	55624	55907
	Monthly	55961.95	-2.36%	4	55173.20	54361	55162	56360	57160	58359
Sensex	Daily	81273.75	0.84%	5	80166.10	80851	81062	81414	81626	81977
	Weekly	80597.66	0.93%	-6	81512.65	79251	79924	80460	81133	81669
	Monthly	81185.58	-2.90%	-1	81149.00	78601	79893	81912	83205	85224

Gainers - Losers (Nifty 500 Stocks)

Gainers				Losers			
Company Name	Last Price	% Gain	Volume	Company Name	Last Price	% Loss	Volume
IFB Industries	1539.3	20	1677452	Agarwal Ind	824.45	-12.05	247495
Laxmi Organic	219.57	20	13300867	Priti Internati	76.71	-11.93	207300
Pennar Inds	255.3	20	8769243	Datamatics Glob	857	-10.41	665940
Saroja Pharma	46.8	20	102400	Purv Flexipack	70.55	-10.18	800
Kotyark Ind	316.6	19.99	101800	Prostarm Info	186.2	-9.53	4608427
SPIC	101.44	19.99	20068962	Paramatrix Tech	82.2	-9.47	10800
Iware Supply	123	17.2	195600	Vasa Denticity	598.95	-8.61	165750



Nifty Daily chart with RSI indicator



BankNifty Daily chart with RSI indicator

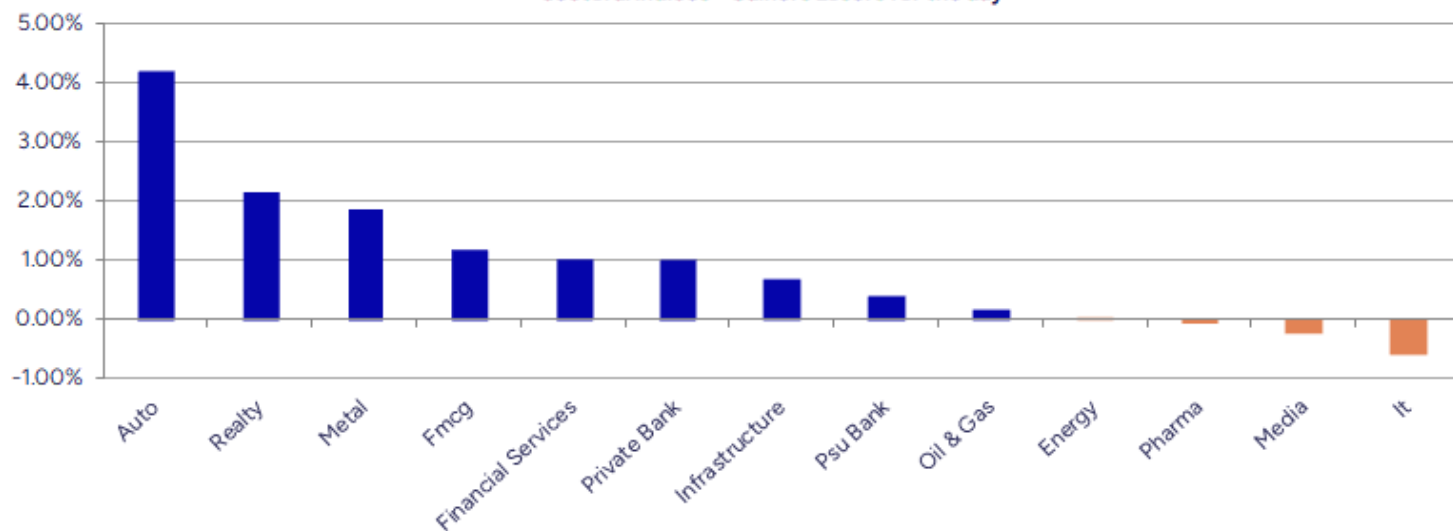


Breakouts - Cross above 200 DMA				Breakdown - Cross below 200 DMA			
Company Name	LCP	Change %	200 DMA	Company Name	LCP	Change %	200 DMA
Divine Power	142	8.21	131.23	Vasa Denticity	598.95	-7.55	647.84
Bikaji Foods	770	5.46	730.12	Ashiana Housing	303.5	-3.89	315.8
Laxmi Organic	219.57	4.65	209.81	Everest Kanto	144.3	-3.61	149.71
Brightcom Group	15.84	4.55	15.15	Zuari Ind.	281.25	-3.53	291.54
IFB Industries	1539.3	4.29	1475.93	Sahyadri Ind	281.25	-3.36	291.02
Wanbury	263.75	3.82	254.05	Ethos	2644.4	-3.33	2735.63
Thomas Scott	353.4	3.62	341.04	Aarvi Encon	115.58	-2.30	118.3
Murudeshwar Cer	44.2	3.54	42.69	Maheshwari Logi	58.56	-2.04	59.78
Dabur India	520	3.17	504	Kellton Tech	26	-2.03	26.54
Krsnaa	830	2.96	806.14	Barak Vally Cem	42.3	-1.97	43.15
Lakshmi Finance	215.88	2.61	210.39	Dolphin Offshor	409.8	-1.93	417.88
Blue Star	1909.7	2.42	1864.66	Websol Energy	1324.8	-1.84	1349.6
Motherson SWI	39.41	2.39	38.49	Network People	2254.1	-1.82	2295.86
Taj GVK Hotels	416.5	2.37	406.84	Pearl Polymers	31.67	-1.71	32.22
Sanghi Ind	66.13	2.26	64.67	Sampann Utpadan	31.47	-1.10	31.82
Sundrop Brands	880.05	1.92	863.44	Welspun Invest	900	-0.82	907.43
Gulf Oil Lubric	1186.9	1.90	1164.76	Saakshi Medtech	176	-0.64	177.14
Muthoot Microfi	159.35	1.88	156.41	Happy Forgings	940	-0.41	943.87

* Stocks crossing above its Simple Moving Average (200DMA)

* Stocks crossing below its Simple Moving Average (200DMA)

Sectoral Indices - Gainers Losers for the day



Stocks witnessing a volume surge as compared to their 5 day average volume

Watch out for the stocks that have seen a huge spurt in its share price over the last three days

Volume Shockers - NSE					
Company name	LCP	% Chg	Volume	Avg Vol *	% Chg
IFB Industries	1539.3	20	1677131	19561	8474
Supreme Petro	805.2	10.06	1837845	25342	7152
Rishabh Instru.	414.5	15.85	6245009	101538	6050
Laxmi Organic	219.57	20	13290047	217455	6012
Jeena Sikho	707	7.16	973806	18612	5132
Saroja Pharma	46.8	20	102400	2240	4471
Modison	163.46	2.23	1051552	23059	4460
Relaxo Footwear	468.4	7.28	2374079	69613	3310
Shradha Infra	62.68	1.52	1018168	31536	3129
Jai Corp	119.23	12.17	8950806	299591	2888
KEC Intl	834.25	7.15	10029173	341449	2837
SPIC	101.44	19.99	20009964	696793	2772
TIPSFILMS	464	-4.45	119030	4161	2761
Aditya Vision	479.6	12.86	4030874	156545	2475
Agarwal Ind	832.35	-11.21	237589	10201	2229
Escorts Kubota	3621.9	6.51	775897	36823	2007
Prince Pipes	326.4	12.01	3347415	171934	1847
Sampann Utpadan	31.2	-3.47	1344948	69437	1837
Pennar Inds	255.3	20	8766957	480276	1725
Interiors & Mor	505	1	22800	1320	1627

* the Average Volume of last 5 days

Price Shockers - NSE				
Company name	LCP	Prv Close	% Chg	Volume
Kotyark Ind	316.6	227.95	38.89	101800
Rico Auto	99.3	75.81	30.99	74822258
Surani Steel Tu	97.75	76.15	28.37	2600
Bafna Pharma	114.89	90.44	27.03	93103
Shreeoswal Seed	15.2	11.98	26.88	443637
Digispice Tech	27.52	21.93	25.49	2812022
Stallion India	152.8	123.3	23.93	8444031
Newmalayalam	34.75	28.7	21.08	86400
Laxmi Organic	219.57	182.35	20.41	13300867
IFB Industries	1539.3	1280.7	20.19	1677452
Premier Explo	510.6	426.95	19.59	480919
Pennar Inds	255.3	216.6	17.87	8769243
SPIC	101.44	87.45	16	20068962
Mindteck	207.02	178.85	15.75	19214
Mangalam Organ	578.6	499.9	15.74	2662
Blue Coast	82.2	71.02	15.74	37222
Thomas Scott	353.4	305.35	15.74	18495
Voler Car	194.55	168.1	15.73	89600
Manugraph Ind	23.47	20.29	15.67	24143
California Soft	15.25	13.19	15.62	37252

* the % price rise of the last 3 days

Nifty 50 stocks - Summary Details											
Symbol	LTP	Chng	% Chng	Volume (lacs)	Turnover (crs.)	52w High	Diff with 52w H	52w Low	Diff with 52w L	365 days % chng	30 days % chng
NIFTY 50	24876.95	245.65	1.00%	3630.61	37636.75	26277.35	5.33%	21743.65	14.41%	-1.35%	0.37%
ADANIENT	2325.50	43.90	1.92%	9.89	231.27	3211.00	27.58%	2025.00	14.84%	-12.11%	-26.61%
ADANIPTS	1330.00	29.70	2.28%	102.25	1334.80	1517.00	12.33%	995.65	33.58%	-9.90%	-12.93%
APOLLOHOSP	7843.00	21.50	0.27%	6.34	498.87	7917.50	0.94%	6001.00	30.69%	7.09%	16.97%
ASIANPAINT	2589.90	61.20	2.42%	17.56	451.77	3394.90	23.71%	2124.75	21.89%	6.14%	-17.04%
AXISBANK	1081.50	13.30	1.25%	79.65	864.02	1281.65	15.62%	933.50	15.85%	-2.83%	-8.45%
BAJAJ-AUTO	8592.00	378.50	4.61%	9.96	852.87	12774.00	32.74%	7089.35	21.20%	-1.61%	-16.94%
BAJAJFINSV	1995.00	69.90	3.63%	14.74	294.76	2135.00	6.56%	1523.25	30.97%	-5.15%	24.21%
BAJFINANCE	905.05	43.60	5.06%	162.78	1478.38	978.80	7.53%	642.50	40.86%	-8.55%	-86.93%
BEL	382.70	-2.20	-0.57%	117.78	452.43	436.00	12.22%	240.25	59.29%	-2.50%	26.90%
BHARTIARTL	1892.90	19.10	1.02%	71.46	1355.25	2045.80	7.47%	1446.50	30.86%	-1.43%	26.31%
CIPLA	1570.00	6.00	0.38%	17.84	279.06	1702.05	7.76%	1335.00	17.60%	5.51%	-0.77%
COALINDIA	388.40	3.95	1.03%	35.20	136.07	543.55	28.54%	349.25	11.21%	-1.04%	-24.96%
DRREDDY	1263.00	2.60	0.21%	16.49	207.20	1421.49	11.15%	1020.00	23.82%	0.23%	-81.45%
EICHERMOT	5915.00	151.00	2.62%	12.89	764.62	6024.50	1.82%	4508.75	31.19%	2.43%	19.63%
GRASIM	2847.00	82.10	2.97%	12.79	363.93	2896.00	1.69%	2276.95	25.04%	1.33%	6.33%
HCLTECH	1481.60	-8.20	-0.55%	27.95	414.65	2012.20	26.37%	1302.75	13.73%	-3.81%	-10.70%
HDFCBANK	2005.00	13.90	0.70%	96.42	1936.85	2037.70	1.60%	1603.20	25.06%	1.72%	22.00%
HDFCLIFE	789.20	0.45	0.06%	39.54	317.01	820.75	3.84%	584.30	35.07%	6.66%	14.41%
HEROMOTOCO	4990.00	281.90	5.99%	36.98	1864.40	6246.25	20.11%	3344.00	49.22%	7.08%	-8.19%
HINDALCO	715.25	20.00	2.88%	72.11	513.84	772.65	7.43%	546.45	30.89%	2.86%	9.63%
HINDUNILVR	2565.00	84.40	3.40%	30.89	795.25	3035.00	15.49%	2136.00	20.08%	-0.36%	-9.74%
ICICIBANK	1436.30	9.00	0.63%	69.09	995.28	1500.00	4.25%	1153.00	24.57%	0.11%	20.22%
INDUSINDBK	787.50	17.75	2.31%	30.30	239.19	1498.00	47.43%	606.00	29.95%	-11.53%	-43.57%
INFY	1436.00	-11.70	-0.81%	72.54	1043.71	2006.45	28.43%	1307.00	9.87%	-8.73%	-22.12%
ITC	405.30	-6.15	-1.49%	309.49	1264.90	528.50	23.31%	390.15	3.88%	-2.67%	-18.14%
JIOFIN	329.70	2.30	0.70%	93.41	308.43	363.00	9.17%	198.65	65.97%	3.33%	-0.23%
JSWSTEEL	1084.00	38.50	3.68%	32.53	348.26	1084.00	0.00%	880.00	23.18%	1.07%	15.09%
KOTAKBANK	2000.00	21.80	1.10%	43.04	864.53	2301.90	13.12%	1679.05	19.11%	-7.58%	11.30%
LT	3640.00	-37.00	-1.01%	19.50	710.41	3963.50	8.16%	2965.30	22.75%	6.12%	3.04%
M&M	3379.00	113.60	3.48%	57.87	1968.59	3432.00	1.54%	2425.00	39.34%	2.29%	14.96%
MARUTI	14090.00	1154.00	8.92%	21.55	3003.34	14125.00	0.25%	10725.00	31.38%	4.16%	5.92%
NESTLEIND	1146.40	57.00	5.23%	34.78	400.98	1389.00	17.47%	1055.00	8.66%	-55.93%	-56.86%
NTPC	336.30	-3.05	-0.90%	65.11	219.82	448.45	25.01%	292.80	14.86%	-0.80%	-14.75%
ONGC	237.80	0.86	0.36%	85.02	201.80	338.75	29.80%	205.00	16.00%	-3.80%	-28.11%
POWERGRID	290.70	2.00	0.69%	98.36	285.46	366.25	20.63%	247.30	17.55%	-1.85%	-14.74%
RELIANCE	1382.90	9.10	0.66%	117.85	1631.27	1551.00	10.84%	1114.85	24.04%	-6.92%	-53.53%
SBILIFE	1865.00	24.40	1.33%	19.25	362.08	1936.00	3.67%	1372.55	35.88%	2.92%	8.98%
SBIN	826.20	-0.35	-0.04%	61.38	509.31	875.45	5.63%	680.00	21.50%	0.39%	1.78%
SHRIRAMFIN	627.70	11.25	1.82%	52.65	331.70	730.45	14.07%	493.35	27.23%	-4.50%	-79.32%
SUNPHARMA	1632.10	-9.30	-0.57%	30.80	503.18	1960.35	16.74%	1553.05	5.09%	-3.08%	-5.82%
TATACONSUM	1073.00	21.80	2.07%	10.99	118.35	1234.30	13.07%	882.90	21.53%	-4.08%	-11.50%
TATAMOTORS	675.90	11.30	1.70%	142.25	965.44	1142.00	40.81%	535.75	26.16%	-2.30%	-39.49%
TATASTEEL	157.97	2.67	1.72%	610.22	960.68	170.18	7.17%	122.62	28.83%	-4.35%	3.87%
TCS	3013.00	-9.30	-0.31%	29.46	888.20	4592.25	34.39%	2991.60	0.72%	-5.25%	-31.56%
TECHM	1470.50	-16.20	-1.09%	12.49	184.75	1807.70	18.65%	1209.40	21.59%	-4.02%	-6.22%
TITAN	3554.10	64.70	1.85%	12.53	443.62	3867.00	8.09%	2925.00	21.51%	2.54%	1.30%
TRENT	5523.50	153.00	2.85%	17.14	953.47	8345.00	33.81%	4488.00	23.07%	-0.08%	-17.41%
ULTRACEMCO	12767.00	450.00	3.65%	8.08	1034.29	12904.00	1.06%	10047.85	27.06%	-1.45%	9.04%
WIPRO	245.60	-1.21	-0.49%	57.89	142.76	324.60	24.34%	228.00	7.72%	-7.54%	-52.19%
ETERNAL	314.10	-4.30	-1.35%	423.53	1345.65	323.70	2.97%	194.80	61.24%	23.79%	#VALUE!

Disclaimer / Disclosures

ANALYST CERTIFICATION

I, Mrs. Vaishali Parekh B.com, Research Analyst, author and the name subscribed to this report, hereby certify that all of the views expressed in this research report accurately reflect our views about the subject issuer(s) or securities. We also certify that no part of our compensation was, is, or will be directly or indirectly related to the specific recommendation(s) or view(s) in this report.

Terms & conditions and other disclosures:

Prabhudas Lilladher Pvt. Ltd, Mumbai, India (hereinafter referred to as "PL") is engaged in the business of Stock Broking, Portfolio Manager, Depository Participant and distribution for third party financial products. PL is a subsidiary of Prabhudas Lilladher Advisory Services Pvt Ltd. which has its various subsidiaries engaged in business of commodity broking, investment banking, financial services (margin funding) and distribution of third party financial/other products, details in respect of which are available at www.plindia.com

This document has been prepared by the Research Division of PL and is meant for use by the recipient only as information and is not for circulation. This document is not to be reported or copied or made available to others without prior permission of PL. It should not be considered or taken as an offer to sell or a solicitation to buy or sell any security.

The information contained in this report has been obtained from sources that are considered to be reliable. However, PL has not independently verified the accuracy or completeness of the same. Neither PL nor any of its affiliates, its directors or its employees accepts any responsibility of whatsoever nature for the information, statements and opinion given, made available or expressed herein or for any omission therein.

Recipients of this report should be aware that past performance is not necessarily a guide to future performance and value of investments can go down as well. The suitability or otherwise of any investments will depend upon the recipient's particular circumstances and, in case of doubt, advice should be sought from an independent expert/advisor.

Either PL or its affiliates or its directors or its employees or its representatives or its clients or their relatives may have position(s), make market, act as principal or engage in transactions of securities of companies referred to in this report and they may have used the research material prior to publication.

PL may from time to time solicit or perform investment banking or other services for any company mentioned in this document.

PL is registered as Research Analyst under Securities and Exchange Board of India (Research Analysts) Regulations, 2014 PL submits that no material disciplinary action has been taken on us by any Regulatory Authority impacting Equity Research Analysis activities.

PL or its research analysts or its associates or his relatives do not have any financial interest in the subject company.

PL or its research analysts or its associates or his relatives do not have actual/beneficial ownership of one per cent or more securities of the subject company at the end of the month immediately preceding the date of publication of the research report.

PL or its research analysts or its associates or his relatives do not have any material conflict of interest at the time of publication of the research report.

PL or its associates might have received compensation from the subject company in the past twelve months.

PL or its associates might have managed or co-managed public offering of securities for the subject company in the past twelve months or mandated by the subject company for any other assignment in the past twelve months.

PL or its associates might have received any compensation for investment banking or merchant banking or brokerage services from the subject company in the past twelve months.

PL or its associates might have received any compensation for products or services other than investment banking or merchant banking or brokerage services from the subject company in the past twelve months PL or its associates might have received any compensation or other benefits from the subject company or third party in connection with the research report.

PL encourages independence in research report preparation and strives to minimize conflict in preparation of research report. PL or its analysts did not receive any compensation or other benefits from the subject Company or third party in connection with the preparation of the research report. PL or its Research Analysts do not have any material conflict of interest at the time of publication of this report.

It is confirmed that Mrs.Vaishali Parekh B.com, Research Analyst of this report has not received any compensation from the companies mentioned in the report in the preceding twelve months compensation of our Research Analysts is not based on any specific merchant banking, investment banking or brokerage service transactions.

The Research analysts for this report certifies that all of the views expressed in this report accurately reflect his or her personal views about the subject company or companies and its or their securities, and no part of his or her compensation was, is or will be, directly or indirectly related to specific recommendations or views expressed in this report.

The research analysts for this report has not served as an officer, director or employee of the subject company PL or its research analysts have not engaged in market making activity for the subject company

Our sales people, traders, and other professionals or affiliates may provide oral or written market commentary or trading strategies to our clients that reflect opinions that are contrary to the opinions expressed herein, and our proprietary trading and investing businesses may make investment decisions that are inconsistent with the recommendations expressed herein. In reviewing these materials, you should be aware that any or all of the foregoing, among other things, may give rise to real or potential conflicts of interest.

PL and its associates, their directors and employees may (a) from time to time, have a long or short position in, and buy or sell the securities of the subject company or (b) be engaged in any other transaction involving such securities and earn brokerage or other compensation or act as a market maker in the financial instruments of the subject company or act as an advisor or lender/borrower to the subject company or may have any other potential conflict of interests with respect to any recommendation and other related information and opinions.