

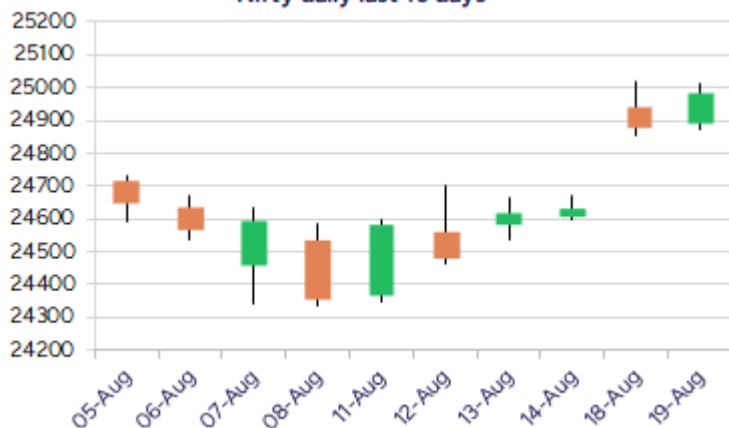
Date: 20<sup>th</sup> August 2025

\* Sensex 81644.39 + 370.64

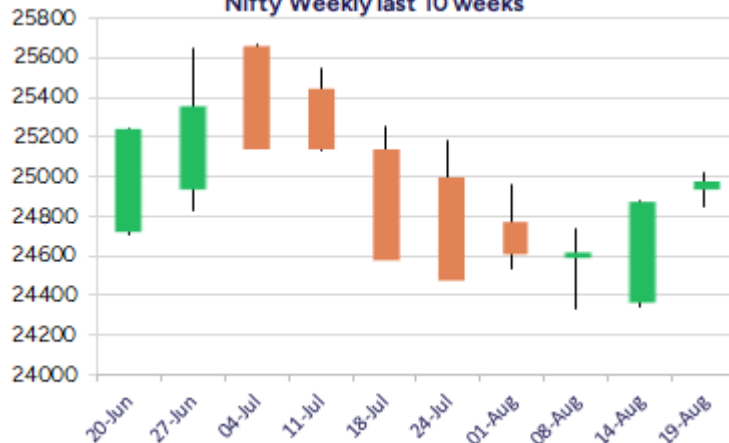
\* Nifty 24980.65 + 103.70

\* Bank Nifty 55865.15 + 130.25

Nifty daily last 10 days



Nifty Weekly last 10 weeks



\*Blue candle → Close rate > Open rate \* Red candle → Close rate < Open rate

## Market Preview

### Nifty ends strong near the 25000 zone.

Nifty opened on a slightly positive note and maintained the strong bias as the day progressed to end up near the 25000 zone with sentiment turned optimistic. Bank Nifty witnessed a range-bound movement during the intraday session, hovering in the range of the 55500–56000 zone to end near the 20 DMA level of the 55850 zone with the bias maintained intact. Sector-wise Oil, media, auto, PSU banks & FMCG were among the major gainers, while pharma and financial services stocks were among the major laggards. The market breadth was strong, with the advance decline indicating a ratio of 2:1 at close.

## Market Forecast

### Nifty daily range 24800 - 25200

Nifty has regained strength after witnessing two sessions of winning streaks from the close above the 50EMA level of the 24800 zone and has retested the 25000 level once again, expecting further rise in the coming sessions. With the undertone maintained positive along with the broader markets indicating active participation, the index is maintained positive, and as mentioned earlier, once the level of 25100 is breached decisively, we can anticipate higher targets of the 25200 and 25300 levels in the coming days. The important and crucial support zone would be positioned near the 24800 level as mentioned earlier, which needs to be sustained.

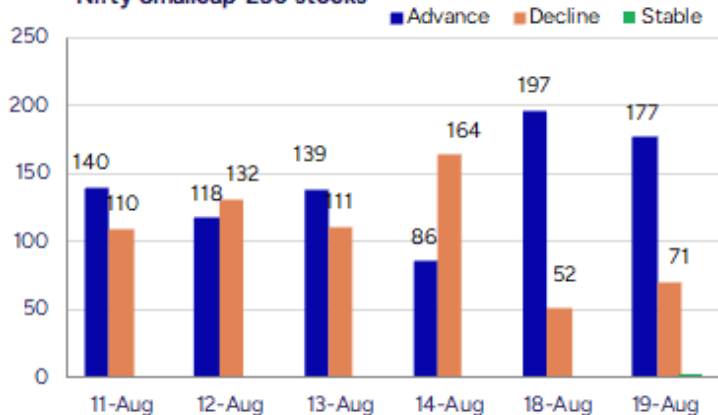
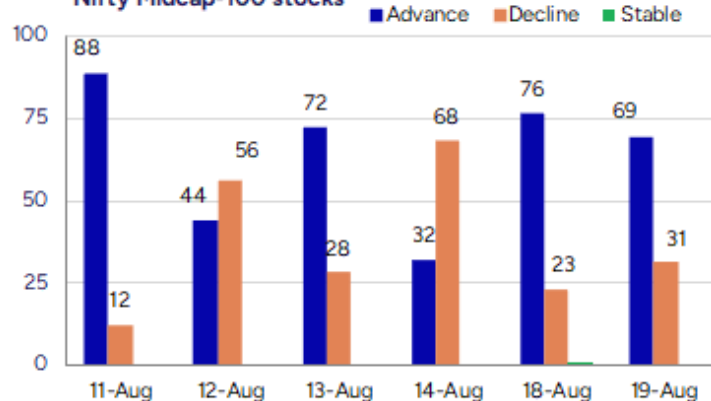
BankNifty continues to oscillate between the narrow range of the 56000 zone, which is acting as a tough hurdle, and on the downside is supported by the 55500 zone, which needs to be sustained to keep the positive bias intact. A decisive breach above the 56000 level shall trigger a fresh upward move with targets of 56500 and 57000 levels achievable in the coming sessions.

The support for the day is seen at 24800 levels, while the resistance is seen at 25100 levels. BankNifty would have the daily range of 55400-56500 levels.

Indices	Period	Closing	% Chng	Trend	Reversal	2 Sup	1 Sup	Pivot	1 Res	2 Res
Nifty	Daily	24980.65	0.42%	6	24590.90	24817	24899	24956	25038	25094
	Weekly	24631.30	1.10%	-6	24886.65	24208	24420	24561	24773	24914
	Monthly	24768.35	-2.93%	3	24708.35	23999	24384	24994	25379	25990
Bank Nifty	Daily	55865.15	0.23%	4	55188.10	55456	55660	55813	56018	56170
	Weekly	55341.85	0.61%	-6	56441.50	54652	54997	55280	55624	55907
	Monthly	55961.95	-2.36%	4	55173.20	54361	55162	56360	57160	58359
Sensex	Daily	81644.39	0.46%	6	80446.25	81131	81388	81572	81828	82012
	Weekly	80597.66	0.93%	-6	81512.65	79251	79924	80460	81133	81669
	Monthly	81185.58	-2.90%	-1	81149.00	78601	79893	81912	83205	85224

**Gainers - Losers ( Nifty 500 Stocks )**

Gainers				Losers			
Company Name	Last Price	% Gain	Volume	Company Name	Last Price	% Loss	Volume
HLE Glascoat	498.95	20	7658327	Abhishek Integr	47.4	-9.28	6000
Kotyark Ind	379.9	19.99	122400	V L Infraprojec	38.6	-7.99	12000
Saroja Pharma	56.15	19.98	108800	Marvel Decor Lt	88.4	-7.82	4000
Deccan Transcon	38.8	19.94	162000	Kundan Edifice	96.5	-6.76	111600
KIOCL	401	19.86	17494712	Nitco	125.14	-6.35	765317
IFGL Refractory	275.52	19.31	1787315	Rishabh Instru	391.55	-5.79	800839
Vardhman Poly	10.4	18.18	2478369	Baba Food Proce	37.7	-5.75	8000

**Nifty Smallcap-250 stocks**

**Nifty Midcap-100 stocks**


## Nifty Daily chart with RSI indicator



## BankNifty Daily chart with RSI indicator



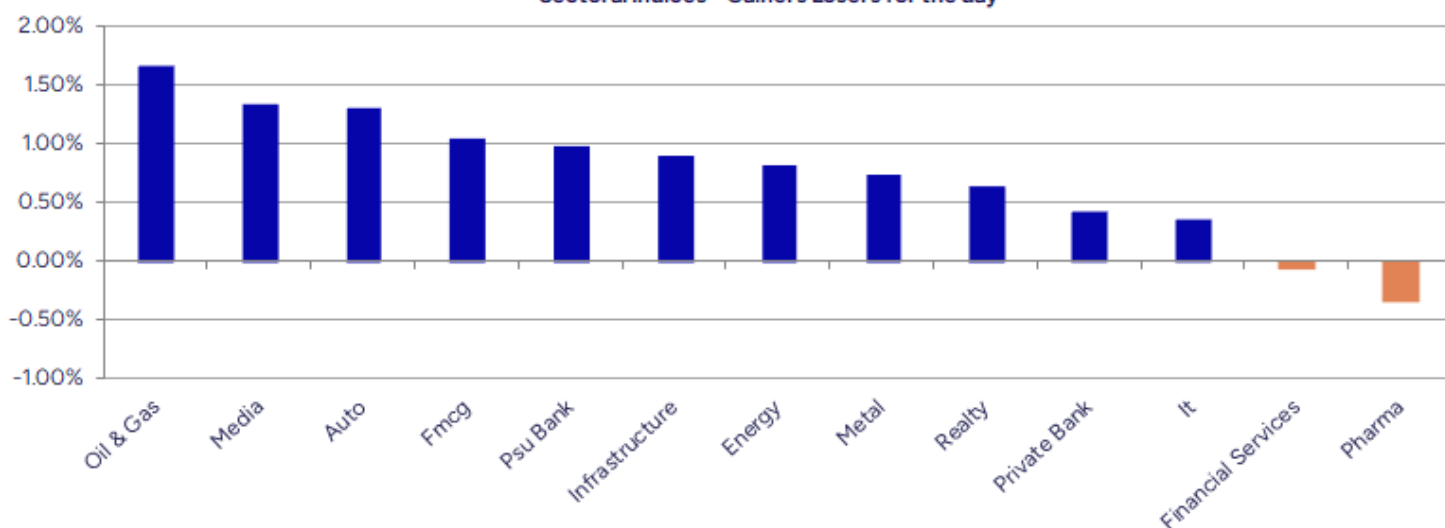
Breakouts - Cross above 200 DMA			
Company Name	LCP	Change %	200 DMA
Saroja Pharma	56.15	18.34	47.45
Bharat Gears	100.06	13.98	87.79
Indo Amines	160.19	6.99	149.72
Signpost India	280.65	6.75	262.9
Kalana Ispat	44.8	6.46	42.08
Wise Travel	175	6.27	164.67
Timescan Logist	65.8	4.43	63.01
Rattan Power	12.66	4.11	12.16
Effwa Infra & R	231	3.92	222.28
Saakshi Medtech	183.75	3.80	177.02
Peria Karamalai	723.65	3.59	698.56
Systango Tech	242.85	3.40	234.87
Andhra Cement	70.78	3.27	68.54
Pudumjee Paper	132.94	3.05	129
Munjal Showa	138.04	2.84	134.23
Dolphin Offshor	428.5	2.68	417.31
Navkar Corp	124.27	2.35	121.42
Sapphire Foods	326.2	2.34	318.73

\* Stocks crossing above its Simple Moving Average (200DMA)

Breakdown - Cross below 200 DMA			
Company Name	LCP	Change %	200 DMA
Rajdarshan Ind	46.6	-4.29	48.69
PTC Industries	13402	-1.91	13662.81
Lead Reclaim	79.1	-1.86	80.6
Z-Tech India	549	-1.64	558.14
Nitco	125.14	-1.52	127.07
Sundrop Brands	855.05	-0.97	863.43
Alldigi Tech	951.4	-0.87	959.73
Neuland Lab	13044	-0.71	13136.63
NHPC	82.09	-0.41	82.43
Divis Labs	6079.5	-0.38	6102.82
MO Nifty200Mom	62.14	-0.30	62.33
Gloster	654.65	-0.19	655.9
HDFC Momentum	30.89	-0.16	30.94
United Heat	73.65	-0.05	73.69

\* Stocks crossing below its Simple Moving Average (200DMA)

Sectoral Indices - Gainers Losers for the day



Stocks witnessing a volume surge as compared to their 5 day average volume

Watch out for the stocks that have seen a huge spurt in its share price over the last three days

Volume Shockers - NSE					
Company name	LCP	% Chg	Volume	Avg Vol *	% Chg
Bharat Gears	100.06	15.58	982362	9557	10179
Jamna Auto	102.92	10.71	73886534	726073	10076
IFGL Refractory	275.52	19.31	1787315	18695	9460
Krishival Foods	386.25	-0.45	64983	1200	5315
Saroja Pharma	56.15	19.98	108800	2240	4757
BSL	151.29	5	58303	1319	4320
Vardhman Text	435.1	6.28	7826472	183904	4156
Jeena Sikho	686.2	-2.87	687511	18612	3594
HLE Glascoat	498.95	20	7658327	264570	2795
Sellowrap Indus	93.55	7.65	366400	13440	2626
KIOCL	401	19.86	17494712	647739	2601
Vidhi Spec	370.65	-2.05	224005	9322	2303
Sunrest	51.25	-3.21	51200	2240	2186
BEW Engineering	155.4	-0.58	21500	1125	1811
Sarthak Metals	110.73	0.81	116775	6263	1765
SJS Enterprises	1306.2	7.46	1092331	70074	1459
Delta Corp	92.88	11.23	17504454	1142479	1432
Accelya	1404.7	0.89	82209	5719	1338
Lambodhara Text	127.69	7.25	88248	6265	1309
Sasken Tech	1473.9	-2.87	161352	11960	1249

\* the Average Volume of last 5 days

Price Shockers - NSE				
Company name	LCP	Prv Close	% Chg	Volume
Eastern Silk	26.46	1.8	1370	133
Kotyark Ind	379.9	263.85	43.98	122400
SPIC	104.85	84.54	24.02	14279254
Laxmi Organic	226.26	182.98	23.65	18441535
Pennar Inds	260.05	212.75	22.23	7976585
KIOCL	401	328.7	22	17494712
BGR Energy	135.94	112.36	20.99	2173545
Sadbhav Engg	14.44	11.94	20.94	1538810
Prajay Engineer	22.79	19.07	19.51	1066710
Vardhman Poly	10.4	8.74	18.99	2478369
HLE Glascoat	498.95	422.2	18.18	7658327
IFGL Refractory	275.52	234.4	17.54	1787315
Aditya Vision	497.15	424.95	16.99	853929
IFB Industries	1500	1282.8	16.93	416831
Signpost India	280.65	240.34	16.77	2502340
Agni Green	23	19.8	16.16	2500
Stallion India	154.21	133.09	15.87	2093611
Magellanic	86.37	74.72	15.59	20369476
GE Power India	388.8	336.6	15.51	5423473
Bharat Gears	100.06	86.74	15.36	982362

\* the % price rise of the last 3 days



Nifty 50 stocks - Summary Details											
Symbol	LTP	Chng	% Chng	Volume (lacs)	Turnover (crs.)	52w High	Diff with 52w H	52w Low	Diff with 52w L	365 days % chng	30 days % chng
NIFTY 50	24980.65	103.70	0.42%	2523.29	24780.85	26277.35	4.93%	21743.65	14.89%	-0.37%	1.37%
ADANIENT	2380.70	47.10	2.02%	10.69	253.18	3211.00	25.86%	2025.00	17.57%	-10.11%	-24.94%
ADANIPTS	1370.00	42.80	3.22%	31.51	426.28	1517.00	9.69%	995.65	37.60%	-8.03%	-11.13%
APOLLOHOSP	7808.50	-4.00	-0.05%	3.85	301.05	7917.50	1.38%	6001.00	30.12%	7.11%	16.98%
ASIANPAINT	2581.00	-6.40	-0.25%	6.99	180.17	3394.90	23.97%	2124.75	21.47%	8.60%	-15.12%
AXISBANK	1084.20	1.60	0.15%	56.62	614.85	1281.65	15.41%	933.50	16.14%	-1.52%	-7.22%
BAJAJ-AUTO	8771.00	182.50	2.12%	10.52	923.82	12774.00	31.34%	7089.35	23.72%	2.89%	-13.14%
BAJAJFINSV	1973.90	-19.60	-0.98%	13.90	274.00	2135.00	7.55%	1545.05	27.76%	-1.78%	28.62%
BAJFINANCE	902.00	-3.20	-0.35%	57.64	517.50	978.80	7.85%	645.10	39.82%	-3.91%	-86.27%
BEL	380.50	-2.00	-0.52%	111.11	421.42	436.00	12.73%	240.25	58.38%	-3.10%	26.11%
BHARTIARTL	1912.90	20.60	1.09%	57.06	1093.61	2045.80	6.50%	1446.50	32.24%	-0.46%	27.55%
CIPLA	1547.20	-18.00	-1.15%	8.99	139.98	1702.05	9.10%	1335.00	15.90%	5.59%	-0.69%
COALINDIA	385.90	-1.90	-0.49%	52.19	201.81	543.55	29.00%	349.25	10.49%	-0.18%	-24.30%
DRREDDY	1245.00	-17.70	-1.40%	10.62	132.82	1421.49	12.42%	1020.00	22.06%	0.41%	-81.41%
EICHERMOT	5936.00	24.00	0.41%	8.44	502.64	6024.50	1.47%	4508.75	31.66%	5.06%	22.71%
GRASIM	2830.00	-15.90	-0.56%	3.73	105.18	2896.00	2.28%	2276.95	24.29%	4.30%	9.44%
HCLTECH	1479.70	-5.30	-0.36%	25.16	371.40	2012.20	26.46%	1302.75	13.58%	-4.12%	-10.98%
HDFCBANK	1990.00	-13.60	-0.68%	61.76	1232.45	2037.70	2.34%	1613.00	23.37%	2.36%	22.76%
HDFCLIFE	794.00	3.00	0.38%	15.31	121.14	820.75	3.26%	584.30	35.89%	6.96%	14.74%
HEROMOTOCO	5116.80	132.80	2.66%	15.10	767.78	6246.25	18.08%	3344.00	53.01%	13.36%	-2.81%
HINDALCO	706.80	-7.35	-1.03%	56.41	399.28	772.65	8.52%	546.45	29.34%	5.66%	12.62%
HINDUNILVR	2604.00	35.90	1.40%	14.01	362.52	3035.00	14.20%	2136.00	21.91%	3.15%	-6.56%
ICICIBANK	1436.90	2.30	0.16%	67.10	962.66	1500.00	4.21%	1165.10	23.33%	0.62%	20.83%
INDUSINDBK	786.00	-2.65	-0.34%	28.08	220.57	1498.00	47.53%	606.00	29.70%	-9.36%	-42.19%
INFY	1442.50	6.70	0.47%	39.86	574.86	2006.45	28.11%	1307.00	10.37%	-9.48%	-22.76%
ITC	409.10	2.80	0.69%	166.80	678.61	528.50	22.59%	390.15	4.86%	-3.89%	-19.17%
JIOFIN	331.40	2.05	0.62%	88.40	292.33	363.00	8.71%	198.65	66.83%	3.95%	0.37%
JSWSTEEL	1073.80	-6.00	-0.56%	18.67	200.69	1088.00	1.31%	880.00	22.02%	4.39%	18.86%
KOTAKBANK	2027.30	25.90	1.29%	31.12	629.46	2301.90	11.93%	1679.05	20.74%	-6.50%	12.61%
LT	3618.00	-17.10	-0.47%	13.53	490.65	3963.50	8.72%	2965.30	22.01%	4.92%	1.87%
M&M	3357.00	-26.10	-0.77%	25.96	874.17	3432.00	2.19%	2425.00	38.43%	5.97%	19.10%
MARUTI	14235.00	167.00	1.19%	9.07	1283.85	14270.00	0.25%	10725.00	32.73%	13.28%	15.19%
NESTLEIND	1165.10	21.00	1.84%	18.51	212.45	1389.00	16.12%	1055.00	10.44%	-53.72%	-54.70%
NTPC	335.30	-0.75	-0.22%	103.16	346.33	448.45	25.23%	292.80	14.52%	-1.77%	-15.58%
ONGC	237.97	-0.19	-0.08%	55.38	131.65	338.75	29.75%	205.00	16.08%	-3.31%	-27.74%
POWERGRID	288.20	-0.90	-0.31%	71.97	207.41	366.25	21.31%	247.30	16.54%	-1.29%	-14.25%
RELIANCE	1421.00	39.30	2.84%	143.84	2033.34	1551.00	8.38%	1114.85	27.46%	-6.39%	-53.26%
SBILIFE	1855.70	-7.30	-0.39%	6.22	115.08	1936.00	4.15%	1372.55	35.20%	4.17%	10.31%
SBIN	829.15	1.50	0.18%	50.77	420.87	875.45	5.29%	680.00	21.93%	0.52%	1.91%
SHRIRAMFIN	625.50	-1.30	-0.21%	47.65	296.75	730.45	14.37%	493.35	26.79%	-2.90%	-78.98%
SUNPHARMA	1638.00	5.30	0.32%	26.56	431.85	1960.35	16.44%	1553.05	5.47%	-3.60%	-6.31%
TATACONSUM	1091.40	20.10	1.88%	6.67	72.16	1234.30	11.58%	882.90	23.62%	-2.24%	-9.80%
TATAMOTORS	700.50	24.50	3.62%	194.39	1351.23	1142.00	38.66%	535.75	30.75%	-0.62%	-38.45%
TATASTEEL	159.20	1.24	0.79%	212.24	336.42	170.18	6.45%	122.62	29.83%	-2.72%	5.64%
TCS	3018.00	6.80	0.23%	26.51	799.62	4592.25	34.28%	2991.60	0.88%	-5.60%	-31.81%
TECHM	1499.60	28.40	1.93%	18.08	268.56	1807.70	17.04%	1209.40	24.00%	-5.02%	-7.20%
TITAN	3564.00	9.20	0.26%	5.37	191.45	3867.00	7.84%	2925.00	21.85%	4.46%	3.19%
TRENT	5492.50	-26.50	-0.48%	5.48	301.72	8345.00	34.18%	4488.00	22.38%	2.68%	-15.12%
ULTRACEMCO	12850.00	85.00	0.67%	3.51	449.25	12904.00	0.42%	10047.85	27.89%	2.14%	13.01%
WIPRO	247.15	1.94	0.79%	40.91	100.85	324.60	23.86%	228.00	8.40%	-8.14%	-52.50%
ETERNAL	321.00	6.10	1.94%	365.91	1163.16	323.70	0.83%	194.80	64.78%	22.43%	#VALUE!

## Disclaimer / Disclosures

### ANALYST CERTIFICATION

I, Mrs. Vaishali Parekh B.com, Research Analyst, author and the name subscribed to this report, hereby certify that all of the views expressed in this research report accurately reflect our views about the subject issuer(s) or securities. We also certify that no part of our compensation was, is, or will be directly or indirectly related to the specific recommendation(s) or view(s) in this report.

Terms & conditions and other disclosures:

Prabhudas Lilladher Pvt. Ltd, Mumbai, India (hereinafter referred to as "PL") is engaged in the business of Stock Broking, Portfolio Manager, Depository Participant and distribution for third party financial products. PL is a subsidiary of Prabhudas Lilladher Advisory Services Pvt Ltd. which has its various subsidiaries engaged in business of commodity broking, investment banking, financial services (margin funding) and distribution of third party financial/other products, details in respect of which are available at [www.plindia.com](http://www.plindia.com)

This document has been prepared by the Research Division of PL and is meant for use by the recipient only as information and is not for circulation. This document is not to be reported or copied or made available to others without prior permission of PL. It should not be considered or taken as an offer to sell or a solicitation to buy or sell any security.

The information contained in this report has been obtained from sources that are considered to be reliable. However, PL has not independently verified the accuracy or completeness of the same. Neither PL nor any of its affiliates, its directors or its employees accepts any responsibility of whatsoever nature for the information, statements and opinion given, made available or expressed herein or for any omission therein.

Recipients of this report should be aware that past performance is not necessarily a guide to future performance and value of investments can go down as well. The suitability or otherwise of any investments will depend upon the recipient's particular circumstances and, in case of doubt, advice should be sought from an independent expert/advisor.

Either PL or its affiliates or its directors or its employees or its representatives or its clients or their relatives may have position(s), make market, act as principal or engage in transactions of securities of companies referred to in this report and they may have used the research material prior to publication.

PL may from time to time solicit or perform investment banking or other services for any company mentioned in this document.

PL is registered as Research Analyst under Securities and Exchange Board of India (Research Analysts) Regulations, 2014 PL submits that no material disciplinary action has been taken on us by any Regulatory Authority impacting Equity Research Analysis activities.

PL or its research analysts or its associates or his relatives do not have any financial interest in the subject company.

PL or its research analysts or its associates or his relatives do not have actual/beneficial ownership of one per cent or more securities of the subject company at the end of the month immediately preceding the date of publication of the research report.

PL or its research analysts or its associates or his relatives do not have any material conflict of interest at the time of publication of the research report.

PL or its associates might have received compensation from the subject company in the past twelve months.

PL or its associates might have managed or co-managed public offering of securities for the subject company in the past twelve months or mandated by the subject company for any other assignment in the past twelve months.

PL or its associates might have received any compensation for investment banking or merchant banking or brokerage services from the subject company in the past twelve months.

PL or its associates might have received any compensation for products or services other than investment banking or merchant banking or brokerage services from the subject company in the past twelve months PL or its associates might have received any compensation or other benefits from the subject company or third party in connection with the research report.

PL encourages independence in research report preparation and strives to minimize conflict in preparation of research report. PL or its analysts did not receive any compensation or other benefits from the subject Company or third party in connection with the preparation of the research report. PL or its Research Analysts do not have any material conflict of interest at the time of publication of this report.

It is confirmed that Mrs.Vaishali Parekh B.com, Research Analyst of this report has not received any compensation from the companies mentioned in the report in the preceding twelve months compensation of our Research Analysts is not based on any specific merchant banking, investment banking or brokerage service transactions.

The Research analysts for this report certifies that all of the views expressed in this report accurately reflect his or her personal views about the subject company or companies and its or their securities, and no part of his or her compensation was, is or will be, directly or indirectly related to specific recommendations or views expressed in this report.

The research analysts for this report has not served as an officer, director or employee of the subject company PL or its research analysts have not engaged in market making activity for the subject company

Our sales people, traders, and other professionals or affiliates may provide oral or written market commentary or trading strategies to our clients that reflect opinions that are contrary to the opinions expressed herein, and our proprietary trading and investing businesses may make investment decisions that are inconsistent with the recommendations expressed herein. In reviewing these materials, you should be aware that any or all of the foregoing, among other things, may give rise to real or potential conflicts of interest.

PL and its associates, their directors and employees may (a) from time to time, have a long or short position in, and buy or sell the securities of the subject company or (b) be engaged in any other transaction involving such securities and earn brokerage or other compensation or act as a market maker in the financial instruments of the subject company or act as an advisor or lender/borrower to the subject company or may have any other potential conflict of interests with respect to any recommendation and other related information and opinions.