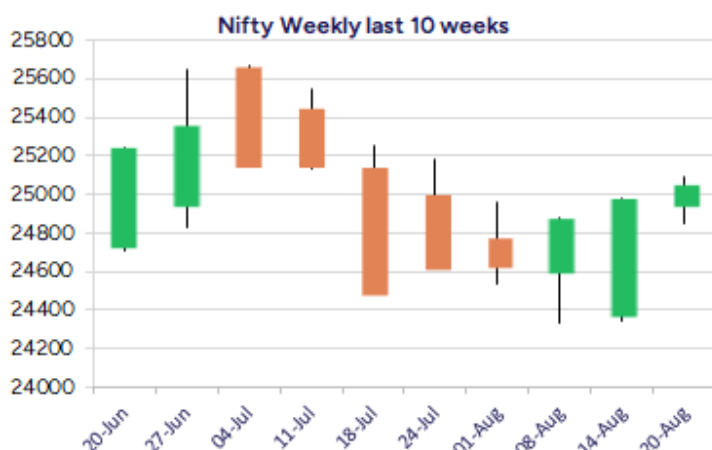
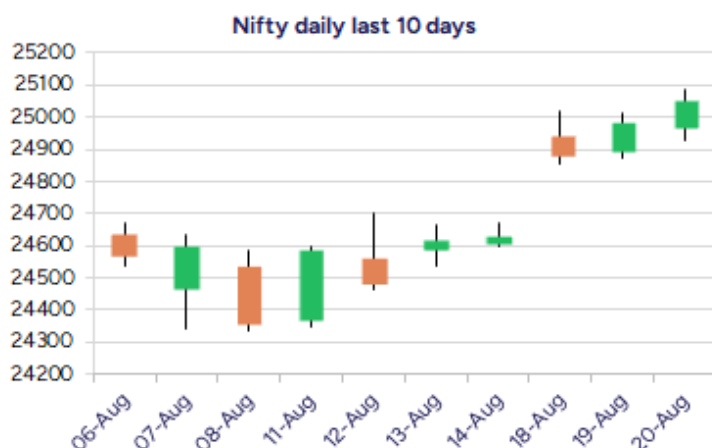


Date: 21<sup>st</sup> August 2025

\* Sensex 81857.84 + 213.45

\* Nifty 25050.55 + 69.90

\* Bank Nifty 55698.50 - 166.65



\*Blue candle → Close rate > Open rate \* Red candle → Close rate < Open rate

## Market Preview

### Nifty ends above the 25000 zone; bias improving

Nifty ended on a positive note for the 3rd consecutive session closing above the 25000 zone to improve the sentiment expecting for further rise in the coming sessions. BankNifty remained rangebound showing passive participation as of now and would need a decisive breach above the 56400 level to get conviction and expect for further rise. The market breadth was positive with the advance decline indicating a ratio of 3:2 at close.

## Market Forecast

### Nifty daily range 24900 - 25300

Nifty continue to gain strength sustaining above the important 50EMA level which is positioned near the 24850-zone maintained as the strong near-term support and currently closing above the 25000 level has further improved bias and sentiment overall. With the broader markets supporting the benchmark index, on the upside, Nifty needs to breach above the important hurdle of 25250-25300 zone which shall establish further stability and conviction for further upward movement in the coming days.

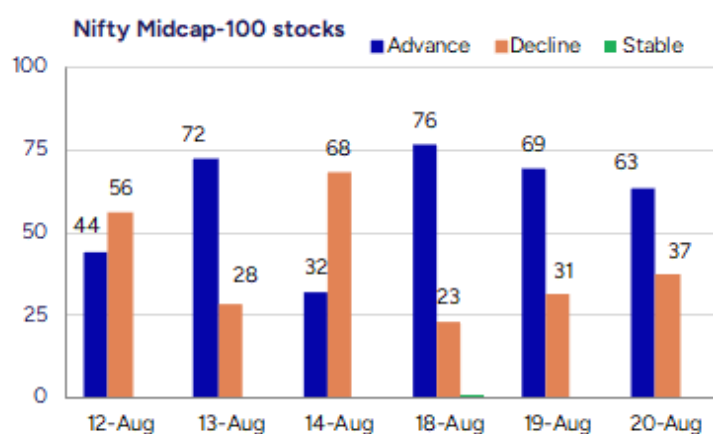
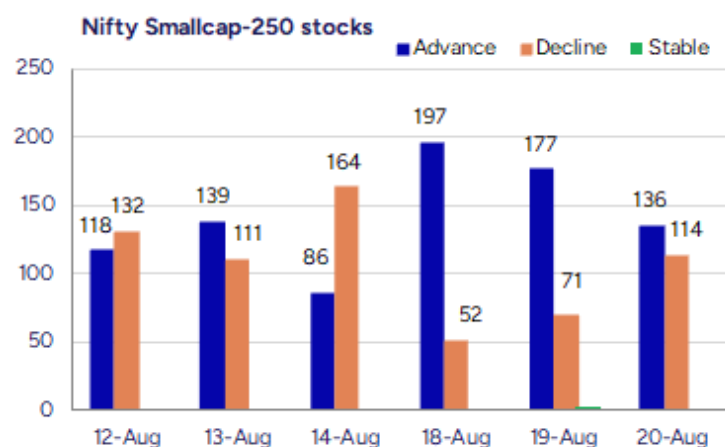
BankNifty continue to remain sluggish with no clear directional move hovering near the important 50EMA zone at 55800 level and would need a decisive breach above the 56400 zone to improve the bias and thereafter expect for further upward movement in the coming days. On the downside, the 55000 level would remain as the important support zone which needs to be sustained as of now to maintain the overall bias intact.

The support for the day is seen at 24900 levels, while the resistance is seen at 25300 levels. BankNifty would have the daily range of 55300-56200 levels.

Indices	Period	Closing	% Chng	Trend	Reversal	2 Sup	1 Sup	Pivot	1 Res	2 Res
Nifty	Daily	25050.55	0.28%	7	24747.90	24864	24957	25023	25116	25182
	Weekly	24631.30	1.10%	-6	24886.65	24208	24420	24561	24773	24914
	Monthly	24768.35	-2.93%	3	24708.35	23999	24384	24994	25379	25990
Bank Nifty	Daily	55698.50	-0.30%	5	55403.50	55461	55580	55696	55815	55931
	Weekly	55341.85	0.61%	-6	56441.50	54652	54997	55280	55624	55907
	Monthly	55961.95	-2.36%	4	55173.20	54361	55162	56360	57160	58359
Sensex	Daily	81857.84	0.26%	7	80914.90	81288	81573	81779	82064	82270
	Weekly	80597.66	0.93%	-6	81512.65	79251	79924	80460	81133	81669
	Monthly	81185.58	-2.90%	-1	81149.00	78601	79893	81912	83205	85224

**Gainers - Losers ( Nifty 500 Stocks )**

Gainers				Losers			
Company Name	Last Price	% Gain	Volume	Company Name	Last Price	% Loss	Volume
Dynamic Cables	480	20	4413718	Nazara	1219.4	-12.88	10926297
IKIO Tech	234.13	20	3099257	Usha Financial	46.8	-10.86	65600
Zuari Ind.	348.9	20	1544584	Hind Rectifiers	1832	-9.99	323911
Grand Continent	239.5	19.81	300000	Shigan Quantum	73.8	-8.89	15000
Ola Electric	53.21	18.69	1107921874	Shanthala	39.8	-8.51	9600
Mahindra EPC	181.7	17.78	6441052	Diensten Tech	138	-6.44	4800
Protean eGov	876.2	15.76	8014958	Sterlite Techno	128.9	-6.31	3791808



## Nifty Daily chart with RSI indicator



## BankNifty Daily chart with RSI indicator



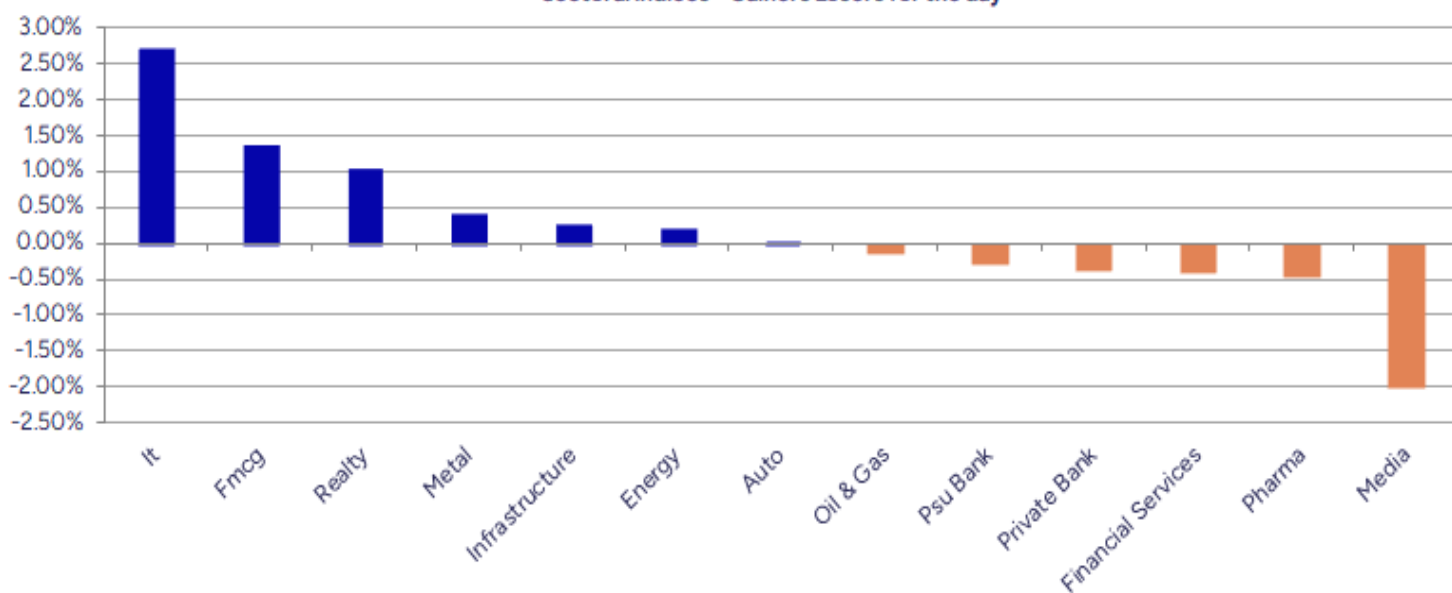
Breakouts - Cross above 200 DMA			
Company Name	LCP	Change %	200 DMA
Zuari Ind.	348.9	19.83	291.16
Tokyo Plast	134.25	6.80	125.7
Simplex Infra	306.4	6.71	287.13
De Neers	321.95	6.16	303.26
Arman Financial	1528.4	5.55	1448.05
Everest Ind	639.2	4.28	612.97
Neuland Lab	13693	4.27	13132.21
Shreeoswal Seed	16.75	3.97	16.11
Archidply Decor	92.16	3.87	88.73
Indian Hotels	806.8	3.82	777.11
Rashtriya Chem	157.3	3.81	151.52
Reliance Power	47.71	3.47	46.11
Hester Bio	2018.4	3.02	1959.31
Lead Reclaim	83.05	2.99	80.64
IKIO Tech	234.13	2.78	227.8
Pearl Polymers	33.05	2.67	32.19
Jullundur Motor	94.06	2.55	91.72
Danish Power	959	2.28	937.6

\* Stocks crossing above its Simple Moving Average (200DMA)

Breakdown - Cross below 200 DMA			
Company Name	LCP	Change %	200 DMA
Diensten Tech	138	-6.31	147.29
Vinsys IT	369	-3.11	380.86
Digjam	51.12	-2.59	52.48
CenturyPlyboard	739.2	-2.25	756.18
INFOLLION	439.25	-2.22	449.21
D-Link India	492.1	-1.83	501.27
Chemplast	441.7	-1.62	448.97
A2Z Infra Eng	18.22	-1.57	18.51
Orient Green	14.4	-1.44	14.61
Ambika Cotton	1484.9	-1.15	1502.23
Shriram Finance	616.3	-0.90	621.92
Indian Hume	387.6	-0.65	390.13
Uflex	544	-0.65	547.58
Rajputana Indus	82	-0.63	82.52
Lakshmi Finance	208.85	-0.62	210.16
Tata Comm	1645.2	-0.60	1655.09
Kalyani Steels	859.15	-0.54	863.8
Navneet	140.59	-0.48	141.27

\* Stocks crossing below its Simple Moving Average (200DMA)

Sectoral Indices - Gainers Losers for the day



Stocks witnessing a volume surge as compared to their 5 day average volume

Watch out for the stocks that have seen a huge spurt in its share price over the last three days

Volume Shockers - NSE					
Company name	LCP	% Chg	Volume	Avg Vol *	% Chg
Foseco India	5691	<b>12.72</b>	266323	2120	12465
Dynamic Cables	480	<b>20</b>	4413718	85708	5050
Saroja Pharma	54.1	<b>-3.65</b>	115200	2240	5043
Mahindra EPC	181.7	<b>17.78</b>	6441052	130982	4818
Hind Nat Glass	13.37	<b>-5.04</b>	1089592	28121	3775
Jeena Sikho	724.4	<b>5.57</b>	588029	18612	3059
KCK Industries	40.95	<b>-0.97</b>	355000	13600	2510
Suraj Estate	321.8	<b>11.74</b>	1080335	47622	2169
Carborundum	990.25	<b>13.82</b>	4787577	225921	2019
Sula Vineyards	256.95	<b>2.47</b>	3971622	198913	1897
Cool Caps	81.5	<b>-2.1</b>	142500	8400	1596
Shree Digvijay	95.65	<b>10.12</b>	6387473	396365	1512
Nazara	1219.4	<b>-12.88</b>	10926297	705279	1449
Krishival Foods	395.9	<b>2.5</b>	18286	1200	1424
GNA Axles	325.1	<b>5.23</b>	333469	22873	1358
Indo Farm Equip	231.25	<b>13.6</b>	5285428	373586	1315
Abha Power	50.75	<b>15.74</b>	208000	14720	1313
Guj Raffia Ind	39.35	<b>2.31</b>	40950	3009	1261
Raj Television	44.25	<b>4.66</b>	27464	2124	1193
Tokyo Plast	134.25	<b>6.94</b>	80985	6467	1152

\* the Average Volume of last 5 days

Price Shockers - NSE				
Company name	LCP	Prv Close	% Chg	Volume
Eastern Silk	27.78	1.8	<b>1443.33</b>	74
Kotyark Ind	417.85	263.85	<b>58.37</b>	49400
SPIC	113.29	84.54	<b>34.01</b>	15422069
BGR Energy	149.53	112.36	<b>33.08</b>	2043192
Sadbhav Engg	15.88	11.94	<b>33</b>	2046371
Ola Electric	53.21	41.31	<b>28.81</b>	1107921874
HLE Glascoat	535.2	422.2	<b>26.76</b>	7055851
Pennar Inds	263.02	212.75	<b>23.63</b>	2450387
Dynamic Cables	480	390.85	<b>22.81</b>	4413718
KIOCL	402.35	328.7	<b>22.41</b>	7115844
Mahindra EPC	181.7	150.55	<b>20.69</b>	6441052
Kingfa Science	4570.2	3817.8	<b>19.71</b>	72851
Silgo Retail	65.46	54.77	<b>19.52</b>	235539
Zuari Ind.	348.9	291.95	<b>19.51</b>	1544584
Laxmi Organic	217.73	182.98	<b>18.99</b>	1980762
Lumax Inds	3892.4	3295.3	<b>18.12</b>	67208
Jamna Auto	106.54	90.61	<b>17.58</b>	38945386
Aditya Vision	496.05	424.95	<b>16.73</b>	409058
Magellanic	87.19	74.72	<b>16.69</b>	5783481
Foseco India	5691	4881.5	<b>16.58</b>	266323

\* the % price rise of the last 3 days



Nifty 50 stocks - Summary Details											
Symbol	LTP	Chng	% Chng	Volume (lacs)	Turnover (crs.)	52w High	Diff with 52w H	52w Low	Diff with 52w L	365 days % chng	30 days % chng
NIFTY 50	25050.55	69.90	0.28%	2870.54	25330.31	26277.35	4.67%	21743.65	15.21%	0.05%	1.66%
ADANIENT	2391.00	2.60	0.11%	7.80	186.42	3211.00	25.54%	2025.00	18.07%	-8.00%	-23.02%
ADANIPTS	1372.00	2.60	0.19%	15.95	218.19	1517.00	9.56%	995.65	37.80%	-5.11%	-8.49%
APOLLOHOSP	7876.00	52.50	0.67%	4.53	357.05	7918.00	0.53%	6001.00	31.24%	7.12%	16.34%
ASIANPAINT	2570.50	-8.90	-0.35%	3.08	79.20	3394.90	24.28%	2124.75	20.98%	8.27%	-16.15%
AXISBANK	1082.50	-0.70	-0.06%	30.35	327.87	1281.65	15.54%	933.50	15.96%	-1.46%	-6.07%
BAJAJ-AUTO	8821.00	25.50	0.29%	4.90	432.61	12774.00	30.95%	7089.35	24.43%	5.37%	-9.98%
BAJAJFINSV	1959.00	-13.20	-0.67%	14.62	285.76	2135.00	8.24%	1545.05	26.79%	-2.83%	27.15%
BAJFINANCE	887.70	-14.60	-1.62%	55.62	494.40	978.80	9.31%	645.10	37.61%	-4.21%	-86.36%
BEL	371.80	-8.25	-2.17%	202.89	760.67	436.00	14.72%	240.25	54.76%	-3.72%	25.78%
BHARTIARTL	1930.00	20.30	1.06%	69.63	1347.27	2045.80	5.66%	1446.50	33.43%	0.46%	29.94%
CIPLA	1544.50	-4.40	-0.28%	9.37	144.79	1702.05	9.26%	1335.00	15.69%	4.49%	-1.69%
COALINDIA	385.05	-0.30	-0.08%	49.04	188.76	543.55	29.16%	349.25	10.25%	-0.81%	-26.18%
DRREDDY	1246.10	1.90	0.15%	6.85	85.39	1421.49	12.34%	1020.00	22.17%	-1.06%	-82.00%
EICHERMOT	5935.00	-3.50	-0.06%	5.11	302.85	6024.50	1.49%	4508.75	31.63%	5.53%	23.38%
GRASIM	2869.50	41.20	1.46%	9.31	265.37	2896.00	0.92%	2276.95	26.02%	3.66%	8.85%
HCLTECH	1496.00	19.90	1.35%	102.19	1510.80	2012.20	25.65%	1302.75	14.83%	-4.69%	-12.06%
HDFCBANK	1988.30	-2.80	-0.14%	49.75	987.62	2037.70	2.42%	1613.00	23.27%	1.72%	22.04%
HDFCLIFE	796.00	2.25	0.28%	10.97	87.51	820.75	3.02%	584.30	36.23%	7.34%	15.76%
HEROMOTOCO	5133.50	15.30	0.30%	9.16	471.31	6246.25	17.81%	3344.00	53.51%	16.41%	-1.36%
HINDALCO	701.00	-5.70	-0.81%	53.58	375.63	772.65	9.27%	546.45	28.28%	4.56%	7.26%
HINDUNILVR	2668.00	63.20	2.43%	31.57	839.45	3035.00	12.09%	2136.00	24.91%	4.63%	-5.02%
ICICIBANK	1430.00	-6.30	-0.44%	58.18	831.90	1500.00	4.67%	1165.10	22.74%	0.74%	22.14%
INDUSINDBK	778.00	-7.50	-0.95%	23.32	182.19	1498.00	48.06%	606.00	28.38%	-9.72%	-41.71%
INFY	1495.10	55.10	3.83%	104.13	1543.98	2006.45	25.49%	1307.00	14.39%	-9.21%	-22.78%
ITC	406.25	-2.85	-0.70%	181.88	741.84	528.50	23.13%	390.15	4.13%	-3.23%	-18.42%
JIOFIN	328.50	-2.80	-0.85%	88.23	290.17	363.00	9.50%	198.65	65.37%	4.56%	-0.05%
JSWSTEEL	1083.50	10.10	0.94%	13.21	142.78	1089.20	0.52%	880.00	23.13%	3.77%	16.96%
KOTAKBANK	2019.50	-10.40	-0.51%	26.27	529.93	2301.90	12.27%	1679.05	20.28%	-5.17%	13.95%
LT	3593.00	-20.00	-0.55%	13.25	476.32	3963.50	9.35%	2965.30	21.17%	4.28%	1.63%
M&M	3392.00	38.00	1.13%	29.58	998.08	3432.00	1.17%	2425.00	39.88%	5.06%	21.30%
MARUTI	14220.00	-30.00	-0.21%	3.91	557.92	14362.00	0.99%	10725.00	32.59%	14.74%	17.29%
NESTLEIND	1191.00	29.60	2.55%	16.53	195.27	1389.00	14.25%	1055.00	12.89%	-53.02%	-53.60%
NTPC	341.75	6.70	2.00%	108.25	368.60	448.45	23.79%	292.80	16.72%	-2.06%	-16.88%
ONGC	238.24	0.30	0.13%	74.38	177.00	338.75	29.67%	205.00	16.21%	-3.40%	-29.04%
POWERGRID	288.25	0.25	0.09%	31.06	89.50	366.25	21.30%	247.30	16.56%	-2.09%	-15.37%
RELIANCE	1412.00	-8.10	-0.57%	87.26	1237.79	1551.00	8.96%	1114.85	26.65%	-3.79%	-52.29%
SBILIFE	1862.00	7.90	0.43%	4.46	82.75	1936.00	3.82%	1372.55	35.66%	3.67%	10.92%
SBIN	828.90	-1.50	-0.18%	44.94	372.79	875.45	5.32%	680.00	21.90%	0.86%	2.05%
SHRIRAMFIN	616.10	-10.25	-1.64%	57.11	352.02	730.45	15.65%	493.35	24.88%	-2.97%	-79.63%
SUNPHARMA	1635.00	8.40	0.52%	18.32	298.07	1960.35	16.60%	1553.05	5.28%	-3.96%	-6.93%
TATACONSUM	1105.30	19.50	1.80%	8.71	95.61	1234.30	10.45%	882.90	25.19%	-0.92%	-7.78%
TATAMOTORS	690.00	-10.25	-1.46%	100.50	695.22	1142.00	39.58%	535.75	28.79%	2.94%	-35.62%
TATASTEEL	161.77	2.54	1.60%	285.20	459.52	170.18	4.94%	122.62	31.93%	-1.93%	3.42%
TCS	3094.80	78.60	2.61%	49.52	1524.44	4592.25	32.61%	2991.60	3.45%	-5.45%	-32.82%
TECHM	1526.00	29.30	1.96%	23.30	353.86	1807.70	15.58%	1209.40	26.18%	-3.37%	-6.14%
TITAN	3591.30	23.20	0.65%	5.17	185.35	3867.00	7.13%	2925.00	22.78%	4.85%	2.98%
TRENT	5457.00	-39.00	-0.71%	6.36	346.87	8345.00	34.61%	4488.00	21.59%	2.25%	-17.85%
ULTRACEMCO	12872.00	9.00	0.07%	2.91	374.86	12930.00	0.45%	10047.85	28.11%	2.92%	13.68%
WIPRO	251.00	4.04	1.64%	100.99	252.73	324.60	22.67%	228.00	10.09%	-7.49%	-52.48%
ETERNAL	325.25	3.80	1.18%	557.35	1824.03	331.35	1.84%	194.80	66.97%	24.98%	#VALUE!

## Disclaimer / Disclosures

### ANALYST CERTIFICATION

I, Mrs. Vaishali Parekh B.com, Research Analyst, author and the name subscribed to this report, hereby certify that all of the views expressed in this research report accurately reflect our views about the subject issuer(s) or securities. We also certify that no part of our compensation was, is, or will be directly or indirectly related to the specific recommendation(s) or view(s) in this report.

Terms & conditions and other disclosures:

Prabhudas Lilladher Pvt. Ltd, Mumbai, India (hereinafter referred to as "PL") is engaged in the business of Stock Broking, Portfolio Manager, Depository Participant and distribution for third party financial products. PL is a subsidiary of Prabhudas Lilladher Advisory Services Pvt Ltd. which has its various subsidiaries engaged in business of commodity broking, investment banking, financial services (margin funding) and distribution of third party financial/other products, details in respect of which are available at [www.plindia.com](http://www.plindia.com)

This document has been prepared by the Research Division of PL and is meant for use by the recipient only as information and is not for circulation. This document is not to be reported or copied or made available to others without prior permission of PL. It should not be considered or taken as an offer to sell or a solicitation to buy or sell any security.

The information contained in this report has been obtained from sources that are considered to be reliable. However, PL has not independently verified the accuracy or completeness of the same. Neither PL nor any of its affiliates, its directors or its employees accepts any responsibility of whatsoever nature for the information, statements and opinion given, made available or expressed herein or for any omission therein.

Recipients of this report should be aware that past performance is not necessarily a guide to future performance and value of investments can go down as well. The suitability or otherwise of any investments will depend upon the recipient's particular circumstances and, in case of doubt, advice should be sought from an independent expert/advisor.

Either PL or its affiliates or its directors or its employees or its representatives or its clients or their relatives may have position(s), make market, act as principal or engage in transactions of securities of companies referred to in this report and they may have used the research material prior to publication.

PL may from time to time solicit or perform investment banking or other services for any company mentioned in this document.

PL is registered as Research Analyst under Securities and Exchange Board of India (Research Analysts) Regulations, 2014 PL submits that no material disciplinary action has been taken on us by any Regulatory Authority impacting Equity Research Analysis activities.

PL or its research analysts or its associates or his relatives do not have any financial interest in the subject company.

PL or its research analysts or its associates or his relatives do not have actual/beneficial ownership of one per cent or more securities of the subject company at the end of the month immediately preceding the date of publication of the research report.

PL or its research analysts or its associates or his relatives do not have any material conflict of interest at the time of publication of the research report.

PL or its associates might have received compensation from the subject company in the past twelve months.

PL or its associates might have managed or co-managed public offering of securities for the subject company in the past twelve months or mandated by the subject company for any other assignment in the past twelve months.

PL or its associates might have received any compensation for investment banking or merchant banking or brokerage services from the subject company in the past twelve months.

PL or its associates might have received any compensation for products or services other than investment banking or merchant banking or brokerage services from the subject company in the past twelve months PL or its associates might have received any compensation or other benefits from the subject company or third party in connection with the research report.

PL encourages independence in research report preparation and strives to minimize conflict in preparation of research report. PL or its analysts did not receive any compensation or other benefits from the subject Company or third party in connection with the preparation of the research report. PL or its Research Analysts do not have any material conflict of interest at the time of publication of this report.

It is confirmed that Mrs.Vaishali Parekh B.com, Research Analyst of this report has not received any compensation from the companies mentioned in the report in the preceding twelve months compensation of our Research Analysts is not based on any specific merchant banking, investment banking or brokerage service transactions.

The Research analysts for this report certifies that all of the views expressed in this report accurately reflect his or her personal views about the subject company or companies and its or their securities, and no part of his or her compensation was, is or will be, directly or indirectly related to specific recommendations or views expressed in this report.

The research analysts for this report has not served as an officer, director or employee of the subject company PL or its research analysts have not engaged in market making activity for the subject company

Our sales people, traders, and other professionals or affiliates may provide oral or written market commentary or trading strategies to our clients that reflect opinions that are contrary to the opinions expressed herein, and our proprietary trading and investing businesses may make investment decisions that are inconsistent with the recommendations expressed herein. In reviewing these materials, you should be aware that any or all of the foregoing, among other things, may give rise to real or potential conflicts of interest.

PL and its associates, their directors and employees may (a) from time to time, have a long or short position in, and buy or sell the securities of the subject company or (b) be engaged in any other transaction involving such securities and earn brokerage or other compensation or act as a market maker in the financial instruments of the subject company or act as an advisor or lender/borrower to the subject company or may have any other potential conflict of interests with respect to any recommendation and other related information and opinions.