

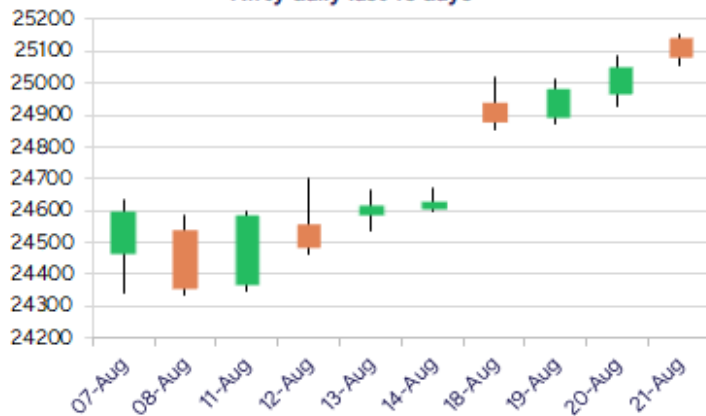
Date: 22nd August 2025

* Sensex 82000.71 + 142.87

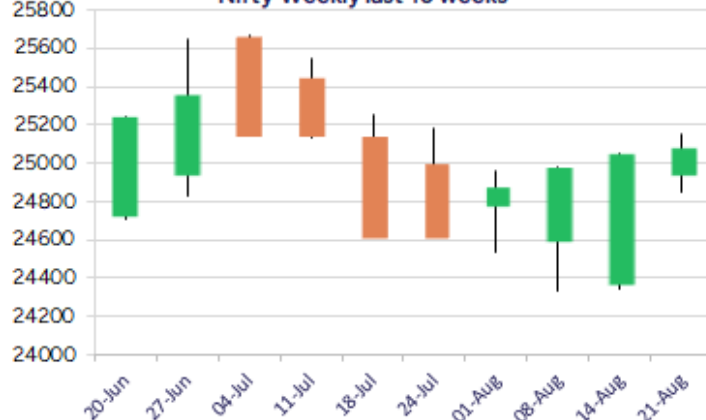
* Nifty 25083.75 + 33.20

* Bank Nifty 55755.45 + 56.95

Nifty daily last 10 days



Nifty Weekly last 10 weeks



*Blue candle → Close rate > Open rate * Red candle → Close rate < Open rate

Market Preview

Nifty sustains above 25000 zone; ends flat

Nifty ended on a flat note sustaining above the important 25000 zone with bias and sentiment slowly easing out and can anticipate for further rise in the coming days. BankNifty remained sluggish once again with narrow movement during the intraday session to end on a flat note. The market breadth was overall flat with the advance decline indicating a neutral ratio at close.

Market Forecast

Nifty daily range 24900 - 25300

Nifty witnessed a rangebound session maintaining above the 25000 zone but finding resistance near the 25150 level with bias overall improving and can expect for further rise in the coming days with the sentiment also easing out. The index would have the important 50EMA level near the 24850-zone as the strong near-term support while on the upside, as mentioned earlier, needs to breach above the important hurdle of 25250-25300 zone which shall establish further stability and conviction for further upward movement in the coming days.

BankNifty once again remained subdued hovering near the important 50EMA zone at 55800 level and witnessing a rangebound session ended on a flat note and as said earlier, would need a decisive breach above the 56200 zone to improve the bias and thereafter expect for further upward movement in the coming days. On the downside, the 55000 level would continue to remain as the important support zone which needs to be sustained as of now to maintain the overall bias intact.

The support for the day is seen at 24900 levels, while the resistance is seen at 25300 levels. BankNifty would have the daily range of 55300-56200 levels.

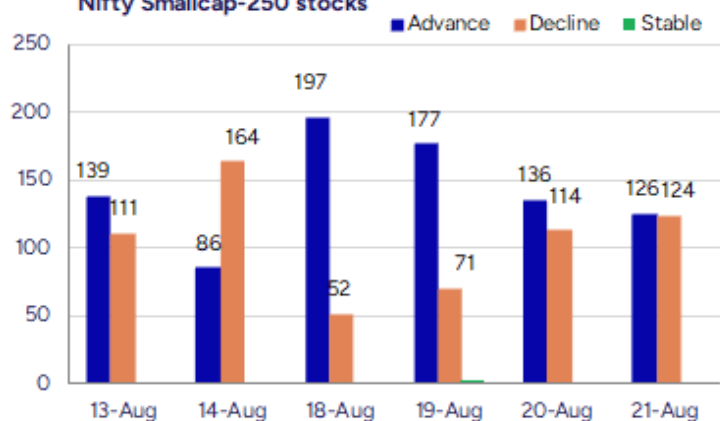
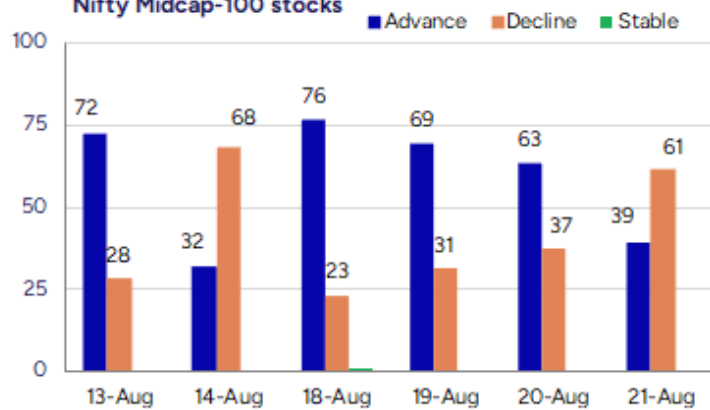
Indices	Period	Closing	% Chng	Trend	Reversal	2 Sup	1 Sup	Pivot	1 Res	2 Res
Nifty	Daily	25083.75	0.13%	8	24851.00	24999	25041	25097	25140	25196
	Weekly	24631.30	1.10%	-6	24886.65	24208	24420	24561	24773	24914
	Monthly	24768.35	-2.93%	3	24708.35	23999	24384	24994	25379	25990
Bank Nifty	Daily	55755.45	0.10%	6	55483.60	55550	55653	55823	55926	56096
	Weekly	55341.85	0.61%	-6	56441.50	54652	54997	55280	55624	55907
	Monthly	55961.95	-2.36%	4	55173.20	54361	55162	56360	57160	58359
Sensex	Daily	82000.71	0.17%	8	81220.50	81741	81871	82051	82181	82361
	Weekly	80597.66	0.93%	-6	81512.65	79251	79924	80460	81133	81669
	Monthly	81185.58	-2.90%	-1	81149.00	78601	79893	81912	83205	85224

Gainers - Losers (Nifty 500 Stocks)
Gainers

Company Name	Last Price	% Gain	Volume
IZMO	489.65	20	430243
Manglam Infra	27.6	20	112000
D P Wires	243.57	20	153828
Coffee Day	46.18	16.12	25349501
BF Utilities	831.25	13.6	3274191
Balaji Phosphat	172.95	13.04	76000
NAVA	675.25	13.04	18638216

Losers

Company Name	Last Price	% Loss	Volume
U. Y. Fincorp	13.64	-11.26	1575525
DocMode Health	46.45	-9.98	3200
Kotyark Ind	378.05	-9.52	174400
Ola Electric	48.81	-8.27	564203196
Hind Rectifiers	1690.2	-7.74	214978
BSE Limited	2332.2	-7.56	12145586
Sungarner	242	-7.03	800

Nifty Smallcap-250 stocks

Nifty Midcap-100 stocks


Nifty Daily chart with RSI indicator



BankNifty Daily chart with RSI indicator



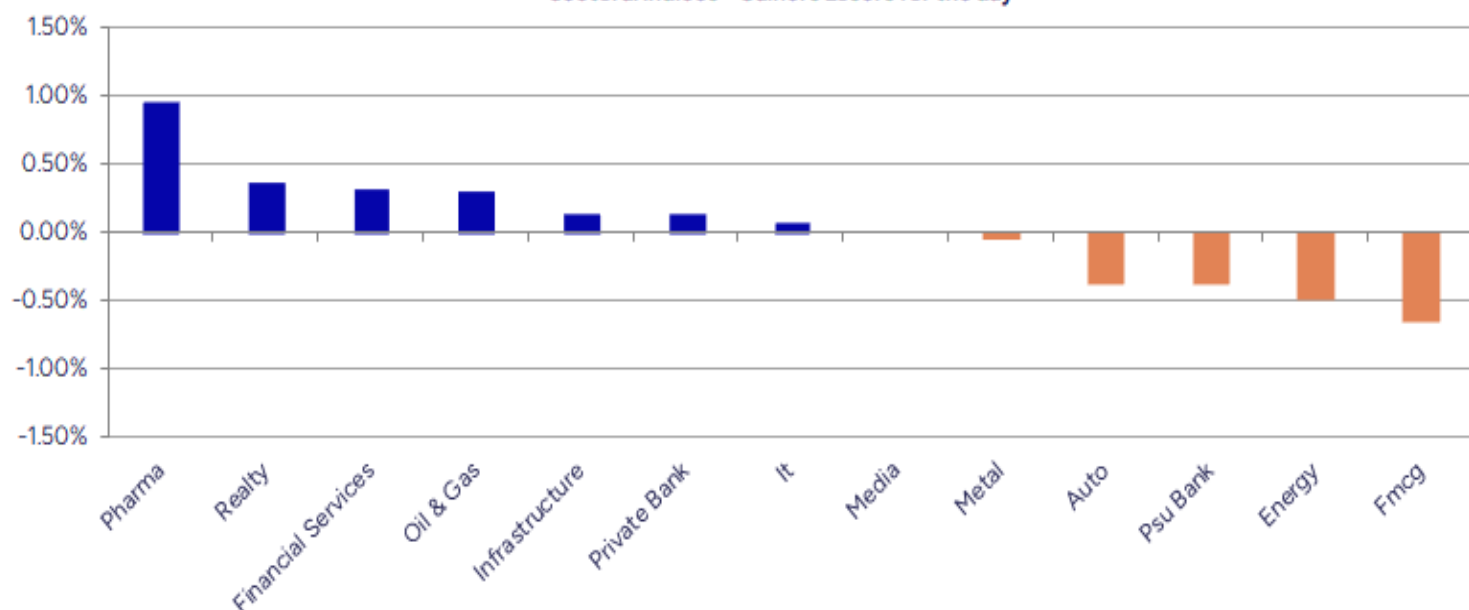
Breakouts - Cross above 200 DMA			
Company Name	LCP	Change %	200 DMA
Navneet	155.68	10.20	141.27
BF Utilities	831.25	3.83	800.61
NDTV	150.86	3.76	145.39
Radhika Jewel	99.79	3.70	96.23
Reliance Infra	302.75	3.60	292.24
Mankind Pharma	2600.1	3.44	2513.51
Kaveri Seed	1151.3	2.83	1119.63
Genus Power	357.9	2.78	348.23
Devyani	174.11	2.48	169.89
Gloster	670.45	2.30	655.37
Nucleus Softwar	1053.8	2.17	1031.41
Heranba	344.95	1.79	338.88
PVR INOX	1122.55	1.77	1103.07
Uflex	557.05	1.76	547.41
Agarwal Float	65.9	1.71	64.79
Pavna	445.3	1.65	438.08
Advani Hotels	63.7	1.55	62.73
Digjam	53.07	1.43	52.32

* Stocks crossing above its Simple Moving Average (200DMA)

Breakdown - Cross below 200 DMA			
Company Name	LCP	Change %	200 DMA
Angel One	2537.8	-3.94	2641.91
Country Club	17.54	-2.61	18.01
Anjani Portland	140.26	-1.94	143.03
Tembo Global	573.55	-1.92	584.75
Network 18	56.25	-1.82	57.29
Danish Power	923.45	-1.68	939.26
NMDC Steel	39.05	-1.64	39.7
Indoco Remedies	278.45	-1.59	282.94
Softtech Engine	384.45	-1.21	389.14
Uniphos Ent	153.08	-1.06	154.72
Adani Trans	815.15	-1.05	823.77
Jullundur Motor	90.77	-0.98	91.67
Vijaya Diagnost	1022.3	-0.94	1031.95
C E Info	1742.5	-0.89	1758.19
Dhunseri Ventur	353.05	-0.81	355.95
NTPC	338.8	-0.81	341.58
Roto Pumps	86.3	-0.79	86.99
Elecon Eng	564.1	-0.78	568.55

* Stocks crossing below its Simple Moving Average (200DMA)

Sectoral Indices - Gainers Losers for the day



Stocks witnessing a volume surge as compared to their 5 day average volume

Watch out for the stocks that have seen a huge spurt in its share price over the last three days

Volume Shockers - NSE					
Company name	LCP	% Chg	Volume	Avg Vol *	% Chg
Clean Science	1149	-2.69	30317827	114523	26373
BF Utilities	831.25	13.6	3274191	34988	9258
BF Investment	483	4.27	1075706	13835	7675
Venkys	1479.9	4.31	1072563	18861	5587
Jupiter Wagons	343.25	4.06	46727127	1155646	3943
India Cements	390.95	5.59	14201329	394201	3503
RACL Geartech	934.2	7.79	568742	16197	3411
NAVA	675.25	13.04	18638216	622042	2896
Sula Vineyards	259.35	0.93	5856757	198913	2844
Tata Comm	1589	-3.42	3645576	170054	2044
Archidply Decor	94.4	2.43	118502	5589	2020
Transwarranty	17.21	1.29	89653	4473	1904
Advani Hotels	63.7	6.47	708700	38430	1744
Avonmore Cap	20.48	3.23	4971107	270353	1739
Zee Media	12.67	-2.16	15608957	854963	1726
Saksoft	211.82	2.7	2856813	162712	1656
Navneet	155.68	10.73	4908766	285428	1620
Saroja Pharma	57.5	6.28	38400	2240	1614
India Pesticide	229.57	5.76	6455031	400759	1511
BEW Engineering	160.6	3.35	17000	1125	1411

* the Average Volume of last 5 days

Price Shockers - NSE				
Company name	LCP	Prv Close	% Chg	Volume
BGR Energy	164.48	123.59	33.09	850463
KIOCL	444.25	334.55	32.79	21341474
Silgo Retail	72	56.67	27.05	323852
Sadbhav Engg	16.67	13.13	26.96	129457
Abha Power	54.4	42.95	26.66	161600
Kaushalya Infra	1049	832.65	25.98	0
Zuari Ind.	348	279.85	24.35	2108494
Manglam Infra	27.6	22.5	22.67	112000
HLE Glascoat	507.1	415.8	21.96	901705
Coffee Day	46.18	38.07	21.3	25349501
IZMO	489.65	405.3	20.81	430243
D P Wires	243.57	201.88	20.65	153828
Tirupati Forge	43.62	36.38	19.9	325082
Indo Farm Equip	236.42	197.98	19.42	4887435
Kotyark Ind	378.05	316.6	19.41	174400
Balaji Phosphat	172.95	145	19.28	76000
Dynamic Cables	463.4	390	18.82	3796659
Suraj Estate	333.25	281.45	18.4	1307450
Ola Electric	48.81	41.24	18.36	564203196
Sellowrap Indus	102.4	86.9	17.84	78400

* the % price rise of the last 3 days

Nifty 50 stocks - Summary Details											
Symbol	LTP	Chng	% Chng	Volume (lacs)	Turnover (crs.)	52w High	Diff with 52w H	52w Low	Diff with 52w L	365 days % chng	30 days % chng
NIFTY 50	25083.75	33.20	0.13%	2265.39	21864.68	26277.35	4.54%	21743.65	15.36%	-0.16%	1.42%
ADANIENT	2373.00	-14.10	-0.59%	4.42	105.38	3211.00	26.10%	2025.00	17.19%	-8.87%	-22.26%
ADANIPTS	1360.00	-10.60	-0.77%	12.27	167.75	1517.00	10.35%	995.65	36.59%	-5.51%	-8.17%
APOLLOHOSP	7920.00	37.00	0.47%	4.82	380.96	7947.00	0.34%	6001.00	31.98%	8.66%	18.13%
ASIANPAINT	2569.00	-1.10	-0.04%	7.81	200.45	3394.90	24.33%	2124.75	20.91%	8.20%	-17.18%
AXISBANK	1077.10	-3.10	-0.29%	64.59	698.64	1281.65	15.96%	933.50	15.38%	-1.76%	-7.52%
BAJAJ-AUTO	8690.00	-137.50	-1.56%	5.11	445.58	12774.00	31.97%	7089.35	22.58%	4.61%	-9.74%
BAJAJFINSV	1978.60	20.10	1.03%	23.46	465.49	2135.00	7.33%	1551.50	27.53%	-4.64%	22.25%
BAJFINANCE	895.30	7.50	0.84%	66.98	599.24	978.80	8.53%	645.10	38.78%	-6.39%	-86.79%
BEL	374.25	2.40	0.65%	126.81	475.64	436.00	14.16%	240.25	55.78%	-7.03%	22.66%
BHARTIARTL	1930.10	1.70	0.09%	33.77	652.63	2045.80	5.66%	1446.50	33.43%	1.01%	33.07%
CIPLA	1593.90	47.80	3.09%	16.98	267.99	1702.05	6.35%	1335.00	19.39%	4.90%	-1.07%
COALINDIA	377.50	-2.05	-0.54%	62.13	235.71	543.55	30.55%	349.25	8.09%	-0.54%	-26.67%
DRREDDY	1277.90	32.50	2.61%	20.08	255.11	1421.49	10.10%	1020.00	25.28%	-1.10%	-82.12%
EICHERMOT	5967.00	29.50	0.50%	4.99	296.41	6024.50	0.95%	4508.75	32.34%	6.83%	21.59%
GRASIM	2874.40	9.50	0.33%	11.38	328.08	2898.40	0.83%	2276.95	26.24%	4.49%	8.65%
HCLTECH	1495.00	-1.00	-0.07%	21.58	322.62	2012.20	25.70%	1302.75	14.76%	-2.25%	-11.31%
HDFCBANK	1990.50	2.30	0.12%	62.20	1238.76	2037.70	2.32%	1613.00	23.40%	-0.61%	21.40%
HDFCLIFE	793.55	-3.00	-0.38%	21.43	171.21	820.75	3.31%	584.30	35.81%	5.88%	12.10%
HEROMOTOCO	5109.00	-27.00	-0.53%	8.19	418.12	6246.25	18.21%	3344.00	52.78%	16.51%	-2.07%
HINDALCO	707.05	6.20	0.88%	32.31	228.08	772.65	8.49%	546.45	29.39%	2.66%	4.15%
HINDUNILVR	2640.00	-29.80	-1.12%	22.36	591.77	3035.00	13.01%	2136.00	23.60%	8.31%	-2.95%
ICICIBANK	1444.70	14.10	0.99%	62.39	900.09	1500.00	3.69%	1165.10	24.00%	-2.40%	21.29%
INDUSINDBK	767.60	-10.60	-1.36%	33.24	256.09	1498.00	48.76%	606.00	26.67%	-9.39%	-43.66%
INFY	1495.50	-0.70	-0.05%	65.66	982.96	2006.45	25.47%	1307.00	14.42%	-5.56%	-20.08%
ITC	406.00	-0.05	-0.01%	150.29	609.69	528.50	23.18%	390.15	4.06%	-3.34%	-18.59%
JIOFIN	324.05	-4.40	-1.34%	109.47	355.84	363.00	10.73%	198.65	63.13%	3.53%	-1.71%
JSWSTEEL	1069.30	-13.30	-1.23%	20.69	223.39	1089.20	1.83%	880.00	21.51%	4.62%	18.04%
KOTAKBANK	2019.00	1.50	0.07%	28.99	585.85	2301.90	12.29%	1679.05	20.25%	-6.82%	11.73%
LT	3619.50	27.20	0.76%	16.24	587.86	3963.50	8.68%	2965.30	22.06%	2.56%	0.55%
M&M	3377.50	-18.10	-0.53%	19.65	665.51	3432.00	1.59%	2425.00	39.28%	4.59%	22.53%
MARUTI	14280.00	59.00	0.41%	5.13	733.16	14401.00	0.84%	10725.00	33.15%	14.64%	16.42%
NESTLEIND	1177.90	-12.40	-1.04%	9.92	116.85	1389.00	15.20%	1055.00	11.65%	-51.86%	-52.74%
NTPC	338.50	-3.50	-1.02%	111.35	378.30	448.45	24.52%	292.80	15.61%	0.13%	-15.82%
ONGC	238.55	0.62	0.26%	81.11	194.11	336.00	29.00%	205.00	16.37%	-2.90%	-27.92%
POWERGRID	284.05	-4.35	-1.51%	73.89	210.67	366.25	22.44%	247.30	14.86%	-2.90%	-15.30%
RELIANCE	1424.30	11.30	0.80%	110.21	1573.33	1551.00	8.17%	1114.85	27.76%	-1.09%	-52.77%
SBILIFE	1872.90	14.40	0.77%	13.16	247.52	1936.00	3.26%	1372.55	36.45%	2.98%	5.52%
SBIN	824.05	-4.90	-0.59%	44.02	364.81	875.45	5.87%	680.00	21.18%	0.58%	1.05%
SHRIRAMFIN	620.00	3.70	0.60%	39.94	247.21	730.45	15.12%	493.35	25.67%	-6.00%	-80.50%
SUNPHARMA	1642.50	9.40	0.58%	17.27	283.33	1960.35	16.21%	1553.05	5.76%	-3.50%	-7.54%
TATACONSUM	1088.00	-17.30	-1.57%	6.14	67.03	1234.30	11.85%	882.90	23.23%	1.38%	-5.63%
TATAMOTORS	685.20	-4.40	-0.64%	84.33	581.96	1142.00	40.00%	535.75	27.90%	0.31%	-36.55%
TATASTEEL	161.29	-0.63	-0.39%	172.82	279.71	170.18	5.22%	122.62	31.54%	-0.67%	5.19%
TCS	3100.00	1.40	0.05%	32.31	1004.05	4592.25	32.49%	2991.60	3.62%	-1.89%	-31.50%
TECHM	1520.60	-3.50	-0.23%	12.52	190.61	1807.70	15.88%	1209.40	25.73%	-1.28%	-6.42%
TITAN	3616.30	21.30	0.59%	6.73	243.24	3867.00	6.48%	2925.00	23.63%	4.72%	3.46%
TRENT	5443.00	-10.00	-0.18%	6.07	333.39	8345.00	34.78%	4488.00	21.28%	1.43%	-19.74%
ULTRACEMCO	12868.00	-6.00	-0.05%	1.55	199.85	12930.00	0.48%	10047.85	28.07%	2.36%	13.43%
WIPRO	250.40	-0.44	-0.18%	76.07	190.56	324.60	22.86%	228.00	9.82%	-3.65%	-52.19%
ETERNAL	321.50	-5.05	-1.55%	220.56	712.13	331.35	2.97%	194.80	65.04%	20.19%	#VALUE!

Disclaimer / Disclosures

ANALYST CERTIFICATION

I, Mrs. Vaishali Parekh B.com, Research Analyst, author and the name subscribed to this report, hereby certify that all of the views expressed in this research report accurately reflect our views about the subject issuer(s) or securities. We also certify that no part of our compensation was, is, or will be directly or indirectly related to the specific recommendation(s) or view(s) in this report.

Terms & conditions and other disclosures:

Prabhudas Lilladher Pvt. Ltd, Mumbai, India (hereinafter referred to as "PL") is engaged in the business of Stock Broking, Portfolio Manager, Depository Participant and distribution for third party financial products. PL is a subsidiary of Prabhudas Lilladher Advisory Services Pvt Ltd. which has its various subsidiaries engaged in business of commodity broking, investment banking, financial services (margin funding) and distribution of third party financial/other products, details in respect of which are available at www.plindia.com

This document has been prepared by the Research Division of PL and is meant for use by the recipient only as information and is not for circulation. This document is not to be reported or copied or made available to others without prior permission of PL. It should not be considered or taken as an offer to sell or a solicitation to buy or sell any security.

The information contained in this report has been obtained from sources that are considered to be reliable. However, PL has not independently verified the accuracy or completeness of the same. Neither PL nor any of its affiliates, its directors or its employees accepts any responsibility of whatsoever nature for the information, statements and opinion given, made available or expressed herein or for any omission therein.

Recipients of this report should be aware that past performance is not necessarily a guide to future performance and value of investments can go down as well. The suitability or otherwise of any investments will depend upon the recipient's particular circumstances and, in case of doubt, advice should be sought from an independent expert/advisor.

Either PL or its affiliates or its directors or its employees or its representatives or its clients or their relatives may have position(s), make market, act as principal or engage in transactions of securities of companies referred to in this report and they may have used the research material prior to publication.

PL may from time to time solicit or perform investment banking or other services for any company mentioned in this document.

PL is registered as Research Analyst under Securities and Exchange Board of India (Research Analysts) Regulations, 2014 PL submits that no material disciplinary action has been taken on us by any Regulatory Authority impacting Equity Research Analysis activities.

PL or its research analysts or its associates or his relatives do not have any financial interest in the subject company.

PL or its research analysts or its associates or his relatives do not have actual/beneficial ownership of one per cent or more securities of the subject company at the end of the month immediately preceding the date of publication of the research report.

PL or its research analysts or its associates or his relatives do not have any material conflict of interest at the time of publication of the research report.

PL or its associates might have received compensation from the subject company in the past twelve months.

PL or its associates might have managed or co-managed public offering of securities for the subject company in the past twelve months or mandated by the subject company for any other assignment in the past twelve months.

PL or its associates might have received any compensation for investment banking or merchant banking or brokerage services from the subject company in the past twelve months.

PL or its associates might have received any compensation for products or services other than investment banking or merchant banking or brokerage services from the subject company in the past twelve months PL or its associates might have received any compensation or other benefits from the subject company or third party in connection with the research report.

PL encourages independence in research report preparation and strives to minimize conflict in preparation of research report. PL or its analysts did not receive any compensation or other benefits from the subject Company or third party in connection with the preparation of the research report. PL or its Research Analysts do not have any material conflict of interest at the time of publication of this report.

It is confirmed that Mrs.Vaishali Parekh B.com, Research Analyst of this report has not received any compensation from the companies mentioned in the report in the preceding twelve months compensation of our Research Analysts is not based on any specific merchant banking, investment banking or brokerage service transactions.

The Research analysts for this report certifies that all of the views expressed in this report accurately reflect his or her personal views about the subject company or companies and its or their securities, and no part of his or her compensation was, is or will be, directly or indirectly related to specific recommendations or views expressed in this report.

The research analysts for this report has not served as an officer, director or employee of the subject company PL or its research analysts have not engaged in market making activity for the subject company

Our sales people, traders, and other professionals or affiliates may provide oral or written market commentary or trading strategies to our clients that reflect opinions that are contrary to the opinions expressed herein, and our proprietary trading and investing businesses may make investment decisions that are inconsistent with the recommendations expressed herein. In reviewing these materials, you should be aware that any or all of the foregoing, among other things, may give rise to real or potential conflicts of interest.

PL and its associates, their directors and employees may (a) from time to time, have a long or short position in, and buy or sell the securities of the subject company or (b) be engaged in any other transaction involving such securities and earn brokerage or other compensation or act as a market maker in the financial instruments of the subject company or act as an advisor or lender/borrower to the subject company or may have any other potential conflict of interests with respect to any recommendation and other related information and opinions.