

Date: 01<sup>st</sup> August 2025

\* Sensex 81185.58 -296.28

\* Nifty 24768.35 -86.70

\* Bank Nifty 55961.95 -188.75

## Market Preview

### Nifty ends weak amid high volatility

Nifty bounced back after the weak opening session to scale 24950 zone but again with heavy profit booking slipped down to end on a weak note near the 24750 zone with bias getting into a cautious mode. BankNifty amid volatility failed to move past the 56400 zone and ended below the 56000 level with bias precariously placed. The market breadth was weak with the advance decline indicating a ratio of 1:2 at close.

## Market Forecast

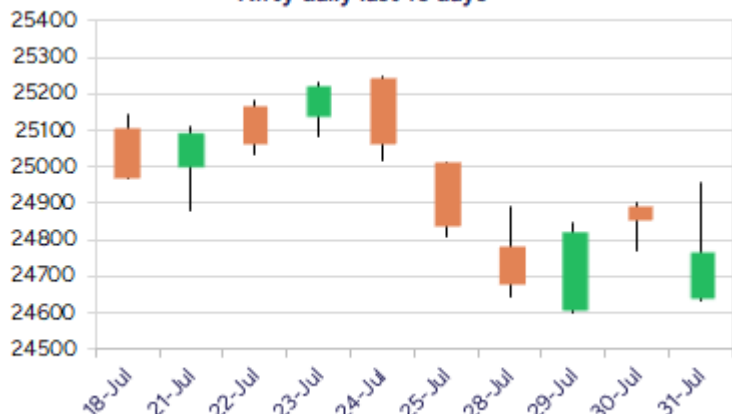
### Nifty daily range 24600-25000

Nifty after opening on a weak note, witnessed a strong recovery to touch the 24950 zone but resisted near the important 50EMA zone and fizzled out with heavy profit booking seen to close near the 24750 level with bias and sentiment precariously placed as of now. As mentioned earlier, on the downside, the index has got the crucial support at 24500 level which needs to be sustained to maintain the overall trend intact and at the same time, on the upside would need to breach above the 25000 zone to improve the bias and expect for further rise.

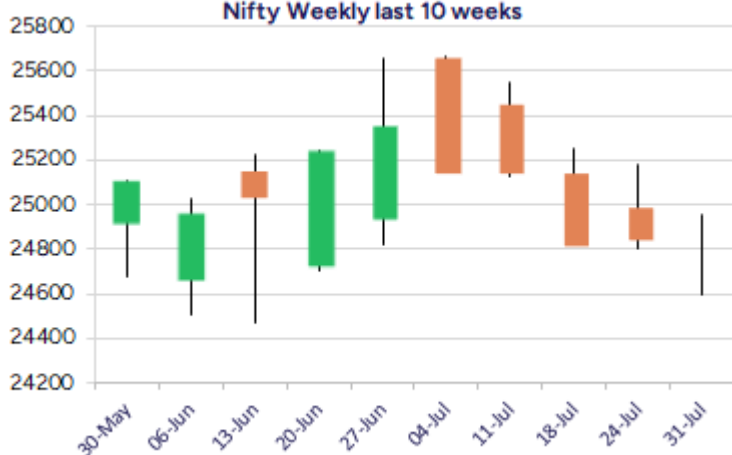
BankNifty, witnessed a decent recovery from the 55500 level to scale 56400 zone but witnessing resistance slipped down to end just below the 56000 level with bias once again maintained with a cautious approach. The index is hovering below the important 50EMA zone of 56100 level and would need a decisive revival to move past the barrier with overall bias precariously placed having the major support now positioned near the 100 period MA at 54500 zone.

The support for the day is seen at 24600 levels while the resistance is seen at 25000 levels. BankNifty would have the daily range of 55500-56600 levels.

Nifty daily last 10 days



Nifty Weekly last 10 weeks

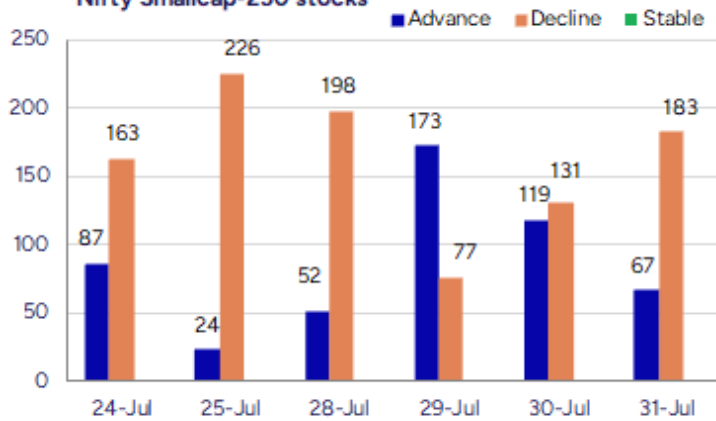
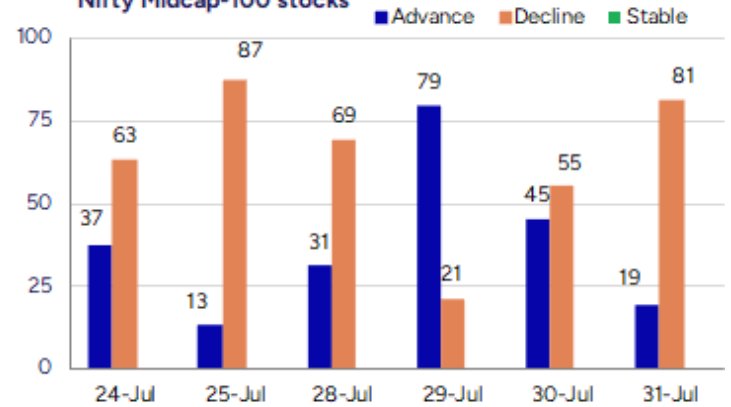


\*Blue candle → Close rate > Open rate \* Red candle → Close rate < Open rate

Indices	Period	Closing	% Chng	Trend	Reversal	2 Sup	1 Sup	Pivot	1 Res	2 Res
Nifty	Daily	24768.35	-0.35%	-6	24831.90	24465	24617	24787	24938	25108
	Weekly	24837.00	-1.24%	-3	25322.55	24529	24683	24963	25117	25397
	Monthly	24768.35	-2.93%	3	24708.35	23999	24384	24994	25379	25990
Bank Nifty	Daily	55961.95	-0.34%	-5	56357.45	55113	55537	55972	56396	56831
	Weekly	56528.90	-0.40%	-3	57019.65	55644	56086	56702	57144	57759
	Monthly	55961.95	-2.36%	4	55173.20	54361	55162	56360	57160	58359
Sensex	Daily	81185.58	-0.36%	-6	81402.60	80120	80653	81228	81761	82336
	Weekly	81463.09	-1.26%	-3	82942.70	80495	80979	81882	82366	83269
	Monthly	81185.58	-2.90%	-1	81149.00	78601	79893	81912	83205	85224

**Gainers - Losers ( Nifty 500 Stocks )**

Gainers				Losers			
Company Name	Last Price	% Gain	Volume	Company Name	Last Price	% Loss	Volume
Sacheerome	205.05	19.98	310800	Tridhya Tech	18.5	-12.11	90000
Plada Infotech	24.45	19.85	105000	Deccan Transcon	32.45	-12.06	250800
Zuari Agro Chem	334.54	16.18	25117145	Pearl Global In	1487.3	-9.25	440538
Upsurge Seeds	185.4	15.37	8700	Steelcast	1135.9	-8.96	355872
Kalana Ispat	43.05	14.65	146000	V R Infraspac	187	-8.78	2400
Virtual Galaxy	201.25	13.03	849000	Cords Cable Ind	187.14	-8.58	143269
Stallion India	138.02	12.93	6927878	Greenpanel Ind	293.85	-8.16	1098828

**Nifty Smallcap-250 stocks**

**Nifty Midcap-100 stocks**


## Nifty Daily chart with RSI indicator



## BankNifty Daily chart with RSI indicator



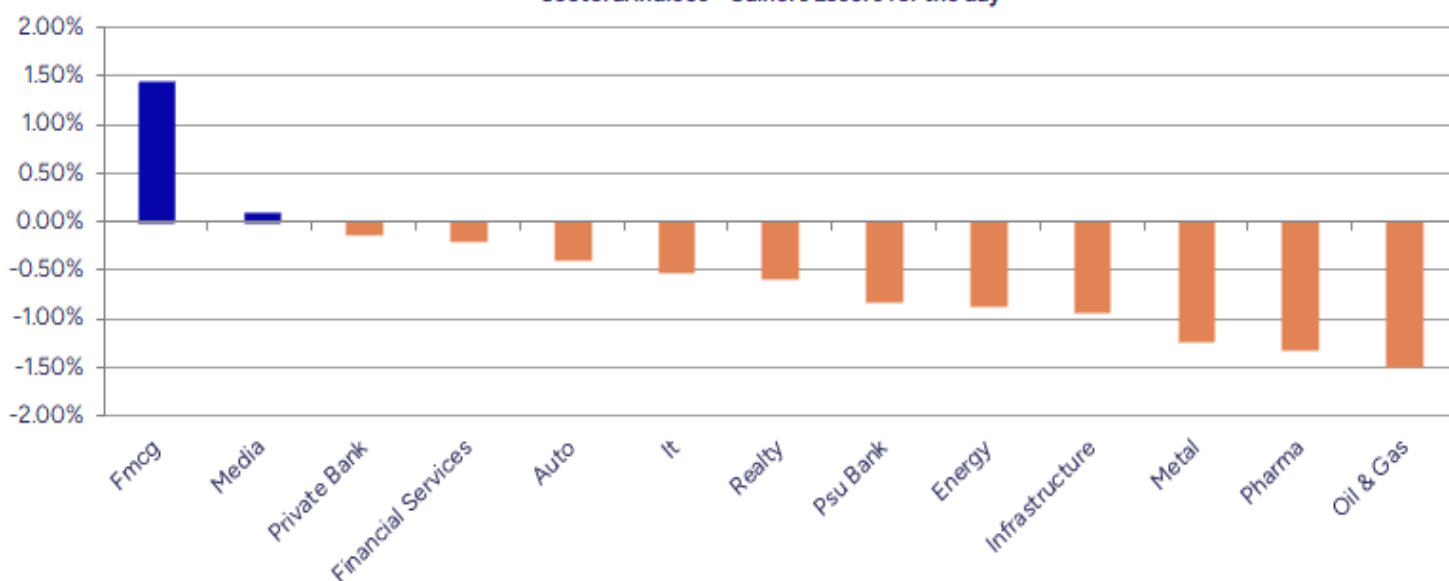
Breakouts - Cross above 200 DMA			
Company Name	LCP	Change %	200 DMA
Canarys Automat	36	7.75	33.41
Vels Film	65.4	4.29	62.71
Greaves Cotton	226.21	4.26	216.96
Sri Adhikari	984.35	3.81	948.26
Eurotex	14.4	3.75	13.88
Nucleus Softwar	1080.7	3.28	1046.41
Vardhman Acryli	49.74	3.09	48.25
Ortin Global	14.86	2.84	14.45
Sylvan Plyboard	84.95	2.65	82.76
Veranda Learnin	237.32	2.55	231.41
Talbrox Auto	289.05	2.06	283.22
Kalana Ispat	43.05	1.87	42.26
Thermax	3940.4	1.82	3869.79
Astec Life	906.3	1.67	891.42
Valiant Organic	353.65	1.62	348
MSP Steel	34.54	1.26	34.11
Can Fin Homes	751.95	1.21	742.93
HF	552.25	1.06	546.48

\* Stocks crossing above its Simple Moving Average (200DMA)

Breakdown - Cross below 200 DMA			
Company Name	LCP	Change %	200 DMA
Guj Heavy Chem	596.8	-5.30	630.2
Aarti Ind	420.05	-5.16	442.9
IVP	182.39	-4.32	190.62
GMRP&UI	109.03	-4.08	113.67
MTNL	45.73	-4.01	47.64
Greenpanel Ind	293.85	-3.81	305.48
Barak Vally Cem	42.45	-3.46	43.97
Mahindra Logist	336.05	-3.15	346.99
Westlife Food	727.75	-2.62	747.36
Hind Copper	243.35	-2.62	249.91
Rattanindia Ent	54.29	-2.44	55.65
Premier Energie	1032.1	-2.44	1057.86
Mirza Intl	33.29	-2.40	34.11
Asahi Songwon	370.5	-2.35	379.4
Shriram Propert	90.47	-2.19	92.5
Trident	29.99	-2.06	30.62
Adani Enterpris	2430.7	-2.05	2481.68
Alok Industries	19	-1.96	19.38

\* Stocks crossing below its Simple Moving Average (200DMA)

Sectoral Indices - Gainers Losers for the day



Stocks witnessing a volume surge as compared to their 5 day average volume

Watch out for the stocks that have seen a huge spurt in its share price over the last three days

Volume Shockers - NSE					
Company name	LCP	% Chg	Volume	Avg Vol *	% Chg
HEG	573.1	7.27	46704062	522128	8845
Lorenzini Appar	11.22	-3.77	659099	14585	4419
Nucleus Softwar	1080.7	6.51	836881	28671	2819
SAL Steel	17.22	9.82	1137248	42199	2595
Goa Carbon	487.65	3.68	281610	10735	2523
Pudumjee Ind	47.34	7.49	143616	6105	2252
Euro Panel	215.65	11.25	126000	5600	2150
AB Cotspin	414.25	0.55	51500	2700	1807
Kaynes Tech	6172	9.47	3889466	215216	1707
Emami	600.65	6.25	4582279	261884	1650
BEW Engineering	156.25	-0.32	18000	1125	1500
Tega Industries	1906	0.24	374512	24591	1423
Zen Tech	1464.1	-4.05	2228161	148896	1396
U. Y. Fincorp	18.55	4.74	744082	57084	1203
Greaves Cotton	226.21	6.65	55299012	4327821	1178
Vaidya Sane	233.2	5	119200	9360	1174
Graphite India	572.75	3.25	6578469	517927	1170
Plada Infotech	24.45	19.85	105000	8400	1150
KCK Industries	43.3	0.7	167500	13600	1132
Unilex Colours	42.15	-5.92	43200	3520	1127

\* the Average Volume of last 5 days

Price Shockers - NSE				
Company name	LCP	Prv Close	% Chg	Volume
Zuari Agro Chem	334.54	218.99	52.76	25117145
Hind Rectifiers	1834	1426.9	28.53	399280
Jayaswal Neco	52.61	41.19	27.73	184377153
Omax Autos	161.85	130.45	24.07	3055789
Stallion India	138.02	115.47	19.53	6927878
Arihant Academy	330.5	280	18.04	29600
Shri Ahimsa	204.55	175	16.89	295200
Auro Impex	56	48	16.67	22400
Chemcon Special	243.94	210.43	15.92	1605674
Nacl Industries	323.3	279.29	15.76	1058831
Sri Adhikari	984.35	850.4	15.75	14240
Focus Lighting	112.15	96.89	15.75	262833
Blue Coast	48.09	41.55	15.74	701
United Polyfab	30.48	26.34	15.72	308594
Ortin Global	14.86	12.85	15.64	50572
Zee Learn	10.29	8.9	15.62	1762480
Acutaas Chem	1327.4	1148.1	15.62	2101023
AION-TECH	76.25	66.05	15.44	113942
Asian Energy	351.85	305.05	15.34	1784463
ASL Industries	53	46.05	15.09	18000

\* the % price rise of the last 3 days



Nifty 50 stocks - Summary Details											
Symbol	LTP	Chng	% Chng	Volume (lacs)	Turnover (crs.)	52w High	Diff with 52w H	52w Low	Diff with 52w L	365 days % chng	30 days % chng
NIFTY 50	24768.35	-86.70	-0.35%	3462.48	30473.22	26277.35	5.74%	21743.65	13.91%	-2.59%	-0.01%
ADANIENT	2430.00	-102.90	-4.06%	14.57	359.40	3258.00	25.41%	2025.00	20.00%	-3.30%	-19.04%
ADANIPTS	1374.00	-20.00	-1.43%	14.13	195.35	1604.95	14.39%	995.65	38.00%	-3.88%	-9.85%
APOLLOHOSP	7507.00	57.00	0.77%	3.43	255.95	7635.00	1.68%	6001.00	25.10%	2.87%	12.18%
ASIANPAINT	2391.00	-24.80	-1.03%	12.75	305.90	3394.90	29.57%	2124.75	12.53%	3.19%	-19.61%
AXISBANK	1068.40	-4.90	-0.46%	76.34	818.37	1281.65	16.64%	933.50	14.45%	-10.50%	-8.26%
BAJAJ-AUTO	8003.00	-40.50	-0.50%	2.97	238.00	12774.00	37.35%	7089.35	12.89%	-3.97%	-15.90%
BAJAJFINSV	1952.00	-7.80	-0.40%	9.86	192.54	2135.00	8.57%	1523.25	28.15%	-4.68%	19.31%
BAJFINANCE	880.00	-4.85	-0.55%	69.99	616.04	978.80	10.09%	642.50	36.96%	-5.52%	-87.03%
BEL	383.00	-3.50	-0.91%	97.00	372.56	436.00	12.16%	240.25	59.42%	-8.30%	21.50%
BHARTIARTL	1912.00	-20.60	-1.07%	46.75	894.79	2045.80	6.54%	1422.60	34.40%	-3.83%	31.44%
CIPLA	1552.00	-7.40	-0.47%	24.58	380.33	1702.05	8.82%	1335.00	16.25%	3.55%	1.99%
COALINDIA	375.95	-3.95	-1.04%	64.61	243.42	543.55	30.83%	349.25	7.64%	-3.07%	-26.85%
DRREDDY	1267.10	-25.00	-1.93%	19.69	250.80	1421.49	10.86%	1020.00	24.23%	0.69%	-81.01%
EICHERMOT	5463.50	-17.50	-0.32%	3.07	167.56	5906.50	7.50%	4508.75	21.18%	-3.10%	10.69%
GRASIM	2760.00	1.40	0.05%	5.81	159.66	2896.00	4.70%	2276.95	21.21%	-3.02%	-1.16%
HCLTECH	1465.20	-11.30	-0.77%	23.06	339.01	2012.20	27.18%	1302.75	12.47%	-14.58%	-9.43%
HDFCBANK	2018.00	-7.80	-0.39%	110.91	2241.37	2037.70	0.97%	1593.30	26.66%	1.21%	25.39%
HDFCLIFE	757.00	-0.45	-0.06%	17.83	134.83	820.75	7.77%	584.30	29.56%	-6.98%	8.64%
HEROMOTOCO	4251.90	0.60	0.01%	4.46	189.96	6246.25	31.93%	3344.00	27.15%	0.34%	-21.91%
HINDALCO	683.70	-5.10	-0.74%	61.37	420.25	772.65	11.51%	546.45	25.12%	-0.58%	4.28%
HINDUNILVR	2524.00	86.60	3.55%	55.06	1381.94	3035.00	16.84%	2136.00	18.16%	6.22%	-9.44%
ICICIBANK	1485.10	2.70	0.18%	123.93	1835.52	1500.00	0.99%	1153.00	28.80%	2.53%	22.57%
INDUSINDBK	798.00	-3.90	-0.49%	44.80	357.81	1498.00	46.73%	606.00	31.68%	-8.05%	-43.91%
INFY	1508.90	-10.10	-0.66%	68.51	1034.86	2006.45	24.80%	1307.00	15.45%	-5.17%	-19.08%
ITC	411.70	4.10	1.01%	193.64	794.79	528.50	22.10%	390.15	5.52%	-2.13%	-16.80%
JIOFIN	329.00	8.70	2.72%	492.86	1620.52	363.00	9.37%	198.65	65.62%	-1.97%	-2.75%
JSWSTEEL	1057.90	20.00	1.93%	31.45	329.89	1074.90	1.58%	854.15	23.85%	1.71%	15.05%
KOTAKBANK	1980.00	20.30	1.04%	43.04	846.41	2301.90	13.98%	1679.05	17.92%	-9.42%	9.72%
LT	3628.50	-36.60	-1.00%	19.27	702.93	3963.50	8.45%	2965.30	22.37%	-0.13%	-3.16%
M&M	3197.50	-11.40	-0.36%	44.66	1428.65	3303.00	3.19%	2425.00	31.86%	0.81%	9.81%
MARUTI	12521.00	-97.00	-0.77%	7.10	892.20	13680.00	8.47%	10725.00	16.75%	1.76%	-1.99%
NESTLEIND	2246.00	14.50	0.65%	6.73	151.21	2778.00	19.15%	2110.00	6.45%	-9.48%	-9.20%
NTPC	333.70	-5.10	-1.51%	89.35	301.07	448.45	25.59%	292.80	13.97%	1.16%	-16.75%
ONGC	240.26	-1.55	-0.64%	102.54	247.43	345.00	30.36%	205.00	17.20%	-0.98%	-27.14%
POWERGRID	291.25	2.30	0.80%	142.78	416.15	366.25	20.48%	247.30	17.77%	-3.65%	-17.40%
RELIANCE	1390.00	-20.10	-1.43%	170.66	2376.59	1551.00	10.38%	1114.85	24.68%	-6.03%	-53.41%
SBILIFE	1840.00	0.90	0.05%	15.71	288.90	1936.00	4.96%	1372.55	34.06%	0.04%	6.86%
SBIN	796.00	-5.65	-0.70%	113.59	906.79	881.40	9.69%	680.00	17.06%	-2.28%	-8.15%
SHRIRAMFIN	631.80	-1.00	-0.16%	64.81	410.19	730.45	13.51%	493.35	28.06%	-10.48%	-78.27%
SUNPHARMA	1700.00	-33.80	-1.95%	32.33	557.02	1960.35	13.28%	1553.05	9.46%	3.47%	1.89%
TATACONSUM	1072.80	-0.30	-0.03%	11.14	119.45	1234.30	13.08%	882.90	21.51%	-2.35%	-10.19%
TATAMOTORS	666.45	-2.00	-0.30%	187.23	1246.42	1179.00	43.47%	535.75	24.40%	-2.84%	-42.47%
TATASTEEL	157.30	-4.06	-2.52%	261.93	419.48	170.18	7.57%	122.62	28.28%	1.00%	-1.65%
TCS	3033.20	-20.40	-0.67%	29.68	900.70	4592.25	33.95%	3015.00	0.60%	-11.80%	-30.05%
TECHM	1464.00	0.80	0.05%	13.83	202.18	1807.70	19.01%	1209.40	21.05%	-13.27%	-4.87%
TITAN	3340.00	-36.50	-1.08%	5.52	184.72	3867.00	13.63%	2925.00	14.19%	-8.50%	-2.65%
TRENT	5024.00	-19.50	-0.39%	7.52	378.08	8345.00	39.80%	4488.00	11.94%	-18.88%	-10.27%
ULTRACEMCO	12250.00	-18.00	-0.15%	1.50	184.33	12714.00	3.65%	10047.85	21.92%	1.45%	3.91%
WIPRO	248.25	-1.95	-0.78%	73.38	182.06	324.60	23.52%	228.00	8.88%	-5.93%	-52.02%
ETERNAL	308.85	5.40	1.78%	324.75	998.79	314.45	1.78%	194.80	58.55%	14.88%	#VALUE!

## Disclaimer / Disclosures

### ANALYST CERTIFICATION

I, Mrs. Vaishali Parekh B.com, Research Analyst, author and the name subscribed to this report, hereby certify that all of the views expressed in this research report accurately reflect our views about the subject issuer(s) or securities. We also certify that no part of our compensation was, is, or will be directly or indirectly related to the specific recommendation(s) or view(s) in this report.

Terms & conditions and other disclosures:

Prabhudas Lilladher Pvt. Ltd, Mumbai, India (hereinafter referred to as "PL") is engaged in the business of Stock Broking, Portfolio Manager, Depository Participant and distribution for third party financial products. PL is a subsidiary of Prabhudas Lilladher Advisory Services Pvt Ltd. which has its various subsidiaries engaged in business of commodity broking, investment banking, financial services (margin funding) and distribution of third party financial/other products, details in respect of which are available at [www.plindia.com](http://www.plindia.com)

This document has been prepared by the Research Division of PL and is meant for use by the recipient only as information and is not for circulation. This document is not to be reported or copied or made available to others without prior permission of PL. It should not be considered or taken as an offer to sell or a solicitation to buy or sell any security.

The information contained in this report has been obtained from sources that are considered to be reliable. However, PL has not independently verified the accuracy or completeness of the same. Neither PL nor any of its affiliates, its directors or its employees accepts any responsibility of whatsoever nature for the information, statements and opinion given, made available or expressed herein or for any omission therein.

Recipients of this report should be aware that past performance is not necessarily a guide to future performance and value of investments can go down as well. The suitability or otherwise of any investments will depend upon the recipient's particular circumstances and, in case of doubt, advice should be sought from an independent expert/advisor.

Either PL or its affiliates or its directors or its employees or its representatives or its clients or their relatives may have position(s), make market, act as principal or engage in transactions of securities of companies referred to in this report and they may have used the research material prior to publication.

PL may from time to time solicit or perform investment banking or other services for any company mentioned in this document.

PL is registered as Research Analyst under Securities and Exchange Board of India (Research Analysts) Regulations, 2014 PL submits that no material disciplinary action has been taken on us by any Regulatory Authority impacting Equity Research Analysis activities.

PL or its research analysts or its associates or his relatives do not have any financial interest in the subject company.

PL or its research analysts or its associates or his relatives do not have actual/beneficial ownership of one per cent or more securities of the subject company at the end of the month immediately preceding the date of publication of the research report.

PL or its research analysts or its associates or his relatives do not have any material conflict of interest at the time of publication of the research report.

PL or its associates might have received compensation from the subject company in the past twelve months.

PL or its associates might have managed or co-managed public offering of securities for the subject company in the past twelve months or mandated by the subject company for any other assignment in the past twelve months.

PL or its associates might have received any compensation for investment banking or merchant banking or brokerage services from the subject company in the past twelve months.

PL or its associates might have received any compensation for products or services other than investment banking or merchant banking or brokerage services from the subject company in the past twelve months PL or its associates might have received any compensation or other benefits from the subject company or third party in connection with the research report.

PL encourages independence in research report preparation and strives to minimize conflict in preparation of research report. PL or its analysts did not receive any compensation or other benefits from the subject Company or third party in connection with the preparation of the research report. PL or its Research Analysts do not have any material conflict of interest at the time of publication of this report.

It is confirmed that Mrs.Vaishali Parekh B.com, Research Analyst of this report has not received any compensation from the companies mentioned in the report in the preceding twelve months compensation of our Research Analysts is not based on any specific merchant banking, investment banking or brokerage service transactions.

The Research analysts for this report certifies that all of the views expressed in this report accurately reflect his or her personal views about the subject company or companies and its or their securities, and no part of his or her compensation was, is or will be, directly or indirectly related to specific recommendations or views expressed in this report.

The research analysts for this report has not served as an officer, director or employee of the subject company PL or its research analysts have not engaged in market making activity for the subject company

Our sales people, traders, and other professionals or affiliates may provide oral or written market commentary or trading strategies to our clients that reflect opinions that are contrary to the opinions expressed herein, and our proprietary trading and investing businesses may make investment decisions that are inconsistent with the recommendations expressed herein. In reviewing these materials, you should be aware that any or all of the foregoing, among other things, may give rise to real or potential conflicts of interest.

PL and its associates, their directors and employees may (a) from time to time, have a long or short position in, and buy or sell the securities of the subject company or (b) be engaged in any other transaction involving such securities and earn brokerage or other compensation or act as a market maker in the financial instruments of the subject company or act as an advisor or lender/borrower to the subject company or may have any other potential conflict of interests with respect to any recommendation and other related information and opinions.