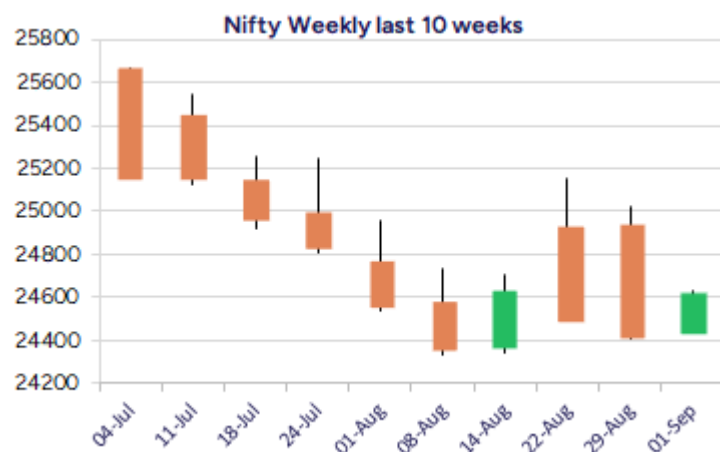
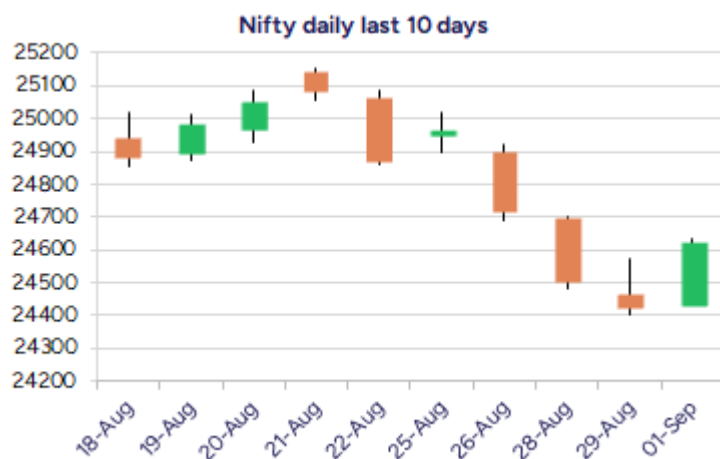


Date: 02nd September 2025

* Sensex 80364.49 + 554.84

* Nifty 24625.05 + 198.20

* Bank Nifty 54002.45 + 346.80



*Blue candle → Close rate > Open rate * Red candle → Close rate < Open rate

Market Preview

Nifty indicates revival with a bullish candle formation

Nifty after the tense session witnessed last week started with a positive note with a significant pullback to close on an optimistic note above 24600 level. BankNifty sustained the 53600 zone and with a revival witnessed ended the session in the green at 54000 level with bias slightly eased out. The market breadth was strong after a long streak of losing session with the advance decline indicating a ratio of 5:2 at close.

Market Forecast

Nifty daily range 24500 - 24800

Nifty, after the weak sessions witnessed last week, has indicated a decent pullback from the trendline support zone at 24400 level having a bullish candle formation to slightly improve the bias and a decisive move past the important 50EMA level at 24800 zone shall improve the bias further. The index is hovering near the crucial zone with a Head and Shoulder formation on the daily chart having the neckline near the 24300 level which shall be a crucial support level which needs to be sustained to maintain the overall trend intact.

BankNifty indicated a pullback from near previous low made at 53500 zone to end near the 54000 level and would need a decisive move to retest the important zone at 55000 level to improve the bias to some extent. As of now, the index is precariously placed having got the next major support near the significant 200 period SMA at 52900 level which needs to be sustained to maintain the overall trend intact.

The support for the day is seen at 24500 levels, while the resistance is seen at 24800 levels. BankNifty would have the daily range of 53500-54600 levels.

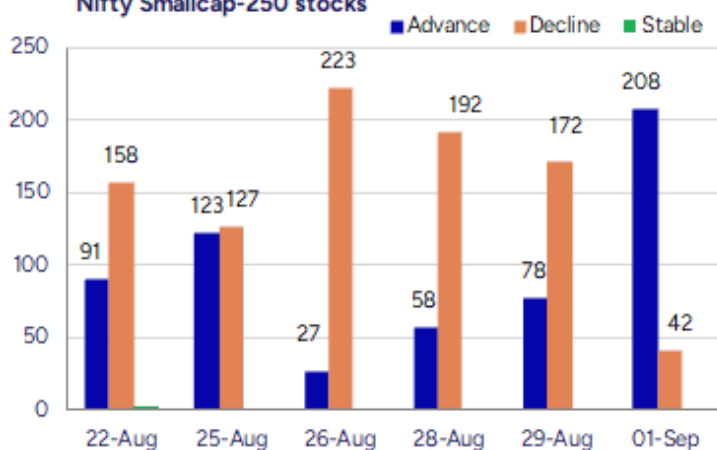
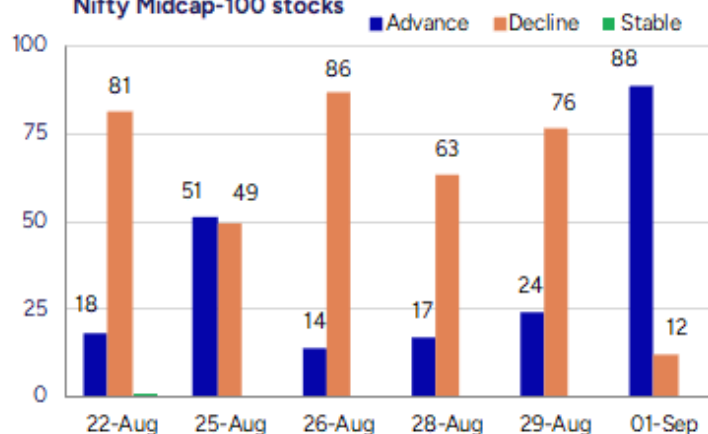
Indices	Period	Closing	% Chng	Trend	Reversal	2 Sup	1 Sup	Pivot	1 Res	2 Res
Nifty	Daily	24625.05	0.81%	-4	24697.70	24362	24493	24564	24696	24767
	Weekly	24426.85	-1.78%	-8	24714.55	24003	24215	24617	24829	25232
	Monthly	24426.85	-1.38%	-1	24777.20	23826	24126	24639	24939	25452
Bank Nifty	Daily	54002.45	0.65%	-6	54165.25	53533	53768	53893	54127	54252
	Weekly	53655.65	-2.71%	-8	55700.40	52497	53076	54190	54769	55883
	Monthly	53655.65	-4.12%	-1	56293.50	51929	52792	54474	55337	57019
Sensex	Daily	80364.49	0.70%	-4	80662.55	79608	79986	80197	80575	80785
	Weekly	79809.65	-1.84%	-8	80839.30	78395	79102	80450	81157	82505
	Monthly	79809.65	-1.69%	-2	81431.75	78110	78960	80593	81443	83075

Gainers - Losers (Nifty 500 Stocks)
Gainers

Company Name	Last Price	% Gain	Volume
BSL	196.05	20	73286
Jindal Poly Inv	1038.7	20	28766
RPP Infra Proj	157.76	20	1115173
Atlantaa	35.89	19.99	552079
Jindal Photo	1235.2	19.99	90381
Pritish Nandy	32.8	19.97	35969
Agni Green	30.4	19.92	167500

Losers

Company Name	Last Price	% Loss	Volume
Sellowrap Indus	104.5	-14.48	433600
Grand Continent	202.15	-11.72	116400
N R Vandana Tex	42	-9.48	252000
Mahickra Chemic	147.95	-8.67	6750
Shri Techtex	69.45	-8.62	38000
Pavna Ind	37.95	-8.16	251151
Trejhara	190.54	-7.83	52672

Nifty Smallcap-250 stocks

Nifty Midcap-100 stocks


Nifty Daily chart with RSI indicator



BankNifty Daily chart with RSI indicator



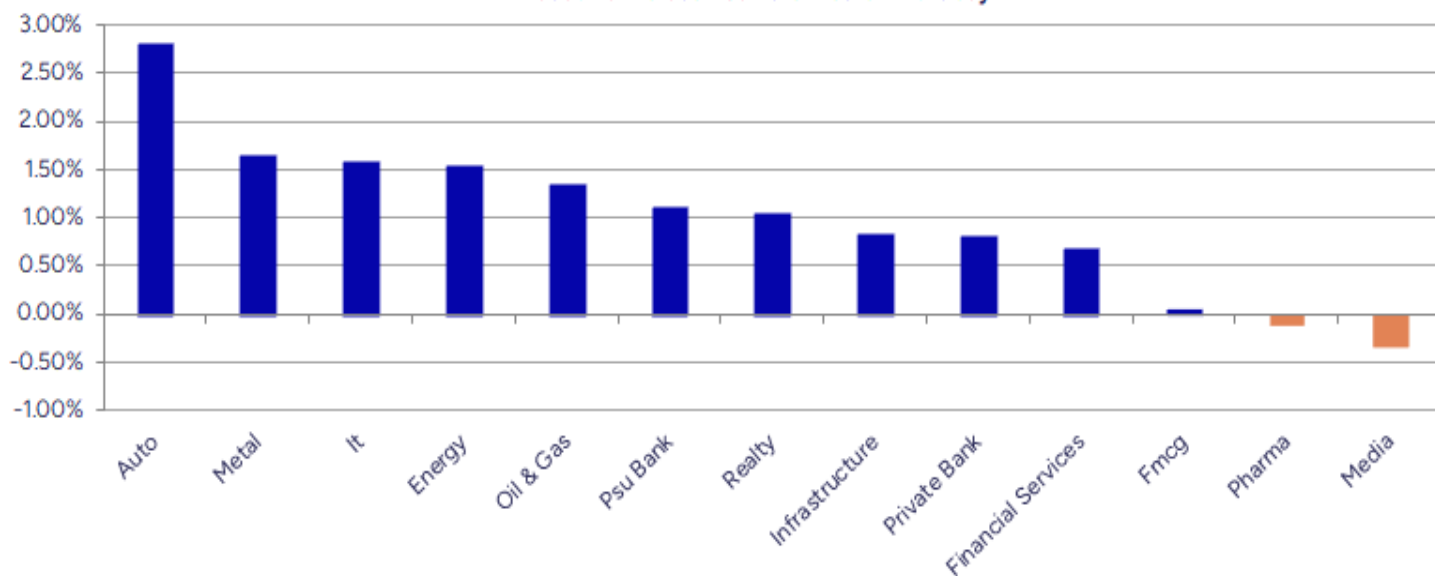
Breakouts - Cross above 200 DMA			
Company Name	LCP	Change %	200 DMA
Zenithexpo	276.85	9.97	251.76
Modison	165.74	5.97	156.4
Ola Electric	62.48	5.11	59.44
BSL	196.05	5.05	186.63
Kalana Ispat	44.05	4.51	42.15
Incredible Ind	42.74	4.29	40.98
Agni Green	30.4	4.18	29.18
Ideaforge Tech	517.2	4.06	497
Rushil Decor	28.78	4.05	27.66
Godavari Bioref	259.35	3.41	250.8
GSFC	205.07	3.28	198.56
Indiabulls Ent	19.34	3.26	18.73
Century Extr	21.98	3.14	21.31
Pilani Invest	5048.5	3.03	4899.96
Nephro Care Ind	162.8	2.95	158.13
Cochin Shipyard	1673.9	2.95	1625.9
Consol Finvest	202.99	2.94	197.2
Pricol	477.45	2.84	464.28

* Stocks crossing above its Simple Moving Average (200DMA)

Breakdown - Cross below 200 DMA			
Company Name	LCP	Change %	200 DMA
Shri Techtex	69.45	-7.04	74.71
Thejo Engg	1893.1	-2.34	1938.39
Vinsys IT	376.3	-1.29	381.22
Shree OSFM	115.5	-1.16	116.85
Capital SFB	286.2	-1.08	289.32
Uttam Sugar	262.15	-1.04	264.91
Bombay Super	139.8	-0.76	140.87
Shreeoswal Seed	15.76	-0.76	15.88
Tokyo Plast	124.97	-0.60	125.72
Divis Labs	6086.5	-0.42	6112.1
GMM Pfaunder	1172.4	-0.32	1176.16
AGI Greenpac	874.95	-0.20	876.74
Alldigi Tech	957.95	-0.18	959.67
HCL Info	15.38	-0.06	15.39
Pelatro	383.55	-0.01	383.6

* Stocks crossing below its Simple Moving Average (200DMA)

Sectoral Indices - Gainers Losers for the day



Stocks witnessing a volume surge as compared to their 5 day average volur

Watch out for the stocks that have seen a huge spurt in its share price over the last three days

Volume Shockers - NSE					
Company name	LCP	% Chg	Volume	Avg Vol *	% Chg
The Western Ind	175.77	13.36	666545	2284	29081
KCK Industries	44.1	-0.23	900000	13600	6518
Consol Finvest	202.99	10.33	248394	5814	4172
Zydus Wellness	2217.8	9.86	1266860	34655	3556
Iris Clothings	32.05	1.42	821228	28713	2760
Atlanta	35.89	19.99	552079	19798	2689
Sintercom India	123.05	0.86	52285	1878	2684
Khaitan Chemica	121.6	11.91	2459897	89174	2659
Lloyds Luxuries	89.75	5.16	54000	2600	1977
Tega Industries	1923.1	4.13	502974	24591	1945
Optiemus Infra	584.7	5.14	1362980	88556	1439
Trejhara	190.54	-7.83	52672	3712	1319
MIC Electronics	51.73	8.47	6635272	588109	1028
Cool Caps	82	-2.15	92500	8400	1001
Aptech	133.71	3.16	353538	34628	921
Rishabh Instru.	445.25	7.1	1021731	101538	906
Palred Tech	50.23	-1.51	26645	2673	897
Sterling Tools	320.15	5.49	331269	33374	893
Pavna	37.95	-8.16	251151	26041	864
Sejal Glass	550.75	-1.75	15800	1659	852

* the Average Volume of last 5 days

Price Shockers - NSE				
Company name	LCP	Prv Close	% Chg	Volume
Jindal Photo	1235.2	850.65	45.21	90381
Jindal Poly Inv	1038.7	730.05	42.28	28766
Agni Green	30.4	22.25	36.63	167500
Elgi Rubber	83.45	63.31	31.81	1118418
RPP Infra Proj	157.76	122.34	28.95	1115173
Rushil Decor	28.78	23.03	24.97	7395521
Lotus Eye Care	128.52	103.53	24.14	906463
Ola Electric	62.48	50.82	22.94	50
Kaushalya Infra	1169.45	960.5	21.75	0
Bharat Seats	162.36	133.71	21.43	173998
BSL	196.05	162.82	20.41	73286
Jindal PolyFilm	611.95	510.6	19.85	3254796
Zenithexpo	276.85	231.49	19.59	5481
Shri Rama Multi	60.76	52.2	16.4	4939515
Khaitan Chemica	121.6	104.88	15.94	2459897
Flexituff Ventu	26.93	23.27	15.73	4747
ANB Metal Cast	198.9	171.9	15.71	10400
Osia Hyper Reta	18.37	15.88	15.68	128544
Astron Paper	14.71	12.75	15.37	296555
Reliable Data S	155.71	135.47	14.94	21081

* the % price rise of the last 3 days

Nifty 50 stocks - Summary Details											
Symbol	LTP	Chng	% Chng	Volume (lacs)	Turnover (crs.)	52w High	Diff with 52w H	52w Low	Diff with 52w L	365 days % chng	30 days % chng
NIFTY 50	24625.05	198.20	0.81%	2293.04	20702.95	26277.35	6.29%	21743.65	13.25%	-0.56%	-3.21%
ADANIENT	2286.60	41.90	1.87%	4.26	96.82	3211.00	28.79%	2025.00	12.92%	-4.52%	-25.66%
ADANIPTS	1334.00	21.20	1.61%	9.83	130.90	1499.50	11.04%	995.65	33.98%	-2.55%	-11.41%
APOLLOHOSP	7657.00	47.00	0.62%	2.56	195.80	7980.00	4.05%	6001.00	27.60%	3.52%	9.85%
ASIANPAINT	2570.00	51.40	2.04%	13.15	336.58	3394.90	24.30%	2124.75	20.96%	3.60%	-19.45%
AXISBANK	1062.90	17.70	1.69%	31.90	337.15	1281.65	17.07%	933.50	13.86%	-1.62%	-11.07%
BAJAJ-AUTO	8978.00	346.50	4.01%	6.59	586.00	12774.00	29.72%	7089.35	26.64%	7.30%	-20.75%
BAJAJFINSV	1942.90	29.40	1.54%	5.90	114.24	2135.00	9.00%	1551.65	25.22%	-0.15%	7.32%
BAJFINANCE	890.00	12.15	1.38%	41.01	364.43	978.80	9.07%	645.10	37.96%	0.26%	-87.81%
BEL	374.20	4.80	1.30%	88.21	328.66	436.00	14.17%	240.25	55.75%	-2.07%	23.42%
BHARTIARTL	1900.50	11.70	0.62%	34.21	648.97	2045.80	7.10%	1511.00	25.78%	0.23%	18.86%
CIPLA	1585.90	-3.50	-0.22%	7.84	124.65	1702.05	6.82%	1335.00	18.79%	5.76%	-3.96%
COALINDIA	378.15	3.35	0.89%	28.28	106.50	537.00	29.58%	349.25	8.27%	0.62%	-28.60%
DRREDDY	1279.90	19.80	1.57%	12.74	162.37	1414.99	9.55%	1020.00	25.48%	3.24%	-82.08%
EICHERMOT	6292.00	189.00	3.10%	6.98	433.75	6292.00	0.00%	4508.75	39.55%	10.40%	23.03%
GRASIM	2816.80	41.20	1.48%	4.99	139.40	2898.40	2.82%	2276.95	23.71%	1.96%	2.84%
HCLTECH	1469.00	14.20	0.98%	21.05	308.79	2012.20	27.00%	1302.75	12.76%	0.19%	-17.02%
HDFCBANK	950.80	-0.80	-0.08%	201.77	1918.08	1018.85	6.68%	806.50	17.89%	-52.71%	-41.87%
HDFCLIFE	780.00	7.95	1.03%	22.18	173.24	820.75	4.96%	584.30	33.49%	4.09%	4.51%
HEROMOTOCO	5250.00	162.00	3.18%	6.59	342.40	6246.25	15.95%	3344.00	57.00%	18.00%	-6.74%
HINDALCO	718.80	14.85	2.11%	37.72	269.14	772.65	6.97%	546.45	31.54%	4.68%	0.37%
HINDUNILVR	2645.00	-14.80	-0.56%	10.97	290.99	3035.00	12.85%	2136.00	23.83%	4.15%	-4.25%
ICICIBANK	1411.00	13.20	0.94%	49.27	693.15	1500.00	5.93%	1186.00	18.97%	-5.01%	13.72%
INDUSINDBK	752.25	12.75	1.72%	14.35	107.42	1498.00	49.78%	606.00	24.13%	-5.64%	-48.11%
INFY	1500.60	31.00	2.11%	45.46	680.73	2006.45	25.21%	1307.00	14.81%	#VALUE!	-24.39%
ITC	405.55	-4.20	-1.03%	122.66	498.39	528.50	23.26%	390.15	3.95%	-1.61%	-18.36%
JIOFIN	314.40	2.70	0.87%	114.85	357.90	363.00	13.39%	198.65	58.27%	-5.40%	-3.11%
JSWSTEEL	1033.70	7.10	0.69%	6.24	64.60	1089.20	5.10%	880.00	17.47%	-0.12%	9.09%
KOTAKBANK	1965.10	4.80	0.24%	15.78	309.98	2301.90	14.63%	1679.05	17.04%	-1.61%	10.08%
LT	3595.00	-6.00	-0.17%	10.94	393.67	3963.50	9.30%	2965.30	21.24%	0.38%	-2.80%
M&M	3312.00	112.50	3.52%	35.26	1155.84	3432.00	3.50%	2425.00	36.58%	1.27%	14.05%
MARUTI	14865.00	74.00	0.50%	5.73	849.00	14938.00	0.49%	10725.00	38.60%	20.23%	19.25%
NESTLEIND	1175.00	18.80	1.63%	6.44	75.20	1389.00	15.41%	1055.00	11.37%	-49.21%	-53.77%
NTPC	331.05	3.50	1.07%	68.97	227.80	448.45	26.18%	292.80	13.06%	-1.01%	-21.30%
ONGC	238.99	5.28	2.26%	43.65	103.34	334.40	28.53%	205.00	16.58%	-1.30%	-29.34%
POWERGRID	279.65	4.40	1.60%	108.21	302.58	366.25	23.65%	247.30	13.08%	-5.49%	-18.42%
RELIANCE	1355.00	-2.20	-0.16%	112.32	1520.75	1551.00	12.64%	1114.85	21.54%	-2.62%	-55.05%
SBILIFE	1815.80	10.30	0.57%	5.30	95.78	1936.00	6.21%	1372.55	32.29%	0.52%	-2.42%
SBIN	805.50	3.00	0.37%	56.19	452.49	875.45	7.99%	680.00	18.46%	1.07%	-1.61%
SHRIRAMFIN	587.50	7.25	1.25%	38.86	227.34	730.45	19.57%	493.35	19.08%	-5.53%	-81.89%
SUNPHARMA	1564.00	-30.50	-1.91%	93.66	1467.35	1960.35	20.22%	1553.05	0.71%	-2.16%	-12.47%
TATACONSUM	1075.00	9.60	0.90%	8.07	86.31	1234.30	12.91%	882.90	21.76%	-0.47%	-11.23%
TATAMOTORS	689.70	20.70	3.09%	76.41	521.98	1142.00	39.61%	535.75	28.74%	3.11%	-39.80%
TATASTEEL	156.17	1.69	1.09%	107.97	167.95	170.18	8.23%	122.62	27.36%	0.96%	1.13%
TCS	3111.00	26.30	0.85%	12.46	388.62	4592.25	32.26%	2991.60	3.99%	2.72%	-32.26%
TECHM	1505.40	24.00	1.62%	12.41	186.70	1807.70	16.72%	1209.40	24.47%	2.96%	-9.48%
TITAN	3618.00	-10.80	-0.30%	2.98	107.90	3867.00	6.44%	2925.00	23.69%	9.43%	1.79%
TRENT	5445.00	147.00	2.77%	6.89	372.84	8345.00	34.75%	4488.00	21.32%	2.28%	-25.99%
ULTRACEMCO	12780.00	140.00	1.11%	2.14	273.50	12930.00	1.16%	10047.85	27.19%	4.35%	11.84%
WIPRO	250.50	1.09	0.44%	31.96	80.24	324.60	22.83%	228.00	9.87%	2.74%	-53.68%
ETERNAL	321.35	7.40	2.36%	478.87	1524.73	331.35	3.02%	194.80	64.96%	3.02%	#VALUE!

Disclaimer / Disclosures

ANALYST CERTIFICATION

I, Mrs. Vaishali Parekh B.com, Research Analyst, author and the name subscribed to this report, hereby certify that all of the views expressed in this research report accurately reflect our views about the subject issuer(s) or securities. We also certify that no part of our compensation was, is, or will be directly or indirectly related to the specific recommendation(s) or view(s) in this report.

Terms & conditions and other disclosures:

Prabhudas Lilladher Pvt. Ltd, Mumbai, India (hereinafter referred to as "PL") is engaged in the business of Stock Broking, Portfolio Manager, Depository Participant and distribution for third party financial products. PL is a subsidiary of Prabhudas Lilladher Advisory Services Pvt Ltd. which has its various subsidiaries engaged in business of commodity broking, investment banking, financial services (margin funding) and distribution of third party financial/other products, details in respect of which are available at www.plindia.com

This document has been prepared by the Research Division of PL and is meant for use by the recipient only as information and is not for circulation. This document is not to be reported or copied or made available to others without prior permission of PL. It should not be considered or taken as an offer to sell or a solicitation to buy or sell any security.

The information contained in this report has been obtained from sources that are considered to be reliable. However, PL has not independently verified the accuracy or completeness of the same. Neither PL nor any of its affiliates, its directors or its employees accepts any responsibility of whatsoever nature for the information, statements and opinion given, made available or expressed herein or for any omission therein.

Recipients of this report should be aware that past performance is not necessarily a guide to future performance and value of investments can go down as well. The suitability or otherwise of any investments will depend upon the recipient's particular circumstances and, in case of doubt, advice should be sought from an independent expert/advisor.

Either PL or its affiliates or its directors or its employees or its representatives or its clients or their relatives may have position(s), make market, act as principal or engage in transactions of securities of companies referred to in this report and they may have used the research material prior to publication.

PL may from time to time solicit or perform investment banking or other services for any company mentioned in this document.

PL is registered as Research Analyst under Securities and Exchange Board of India (Research Analysts) Regulations, 2014 PL submits that no material disciplinary action has been taken on us by any Regulatory Authority impacting Equity Research Analysis activities.

PL or its research analysts or its associates or his relatives do not have any financial interest in the subject company.

PL or its research analysts or its associates or his relatives do not have actual/beneficial ownership of one per cent or more securities of the subject company at the end of the month immediately preceding the date of publication of the research report.

PL or its research analysts or its associates or his relatives do not have any material conflict of interest at the time of publication of the research report.

PL or its associates might have received compensation from the subject company in the past twelve months.

PL or its associates might have managed or co-managed public offering of securities for the subject company in the past twelve months or mandated by the subject company for any other assignment in the past twelve months.

PL or its associates might have received any compensation for investment banking or merchant banking or brokerage services from the subject company in the past twelve months.

PL or its associates might have received any compensation for products or services other than investment banking or merchant banking or brokerage services from the subject company in the past twelve months PL or its associates might have received any compensation or other benefits from the subject company or third party in connection with the research report.

PL encourages independence in research report preparation and strives to minimize conflict in preparation of research report. PL or its analysts did not receive any compensation or other benefits from the subject Company or third party in connection with the preparation of the research report. PL or its Research Analysts do not have any material conflict of interest at the time of publication of this report.

It is confirmed that Mrs.Vaishali Parekh B.com, Research Analyst of this report has not received any compensation from the companies mentioned in the report in the preceding twelve months compensation of our Research Analysts is not based on any specific merchant banking, investment banking or brokerage service transactions.

The Research analysts for this report certifies that all of the views expressed in this report accurately reflect his or her personal views about the subject company or companies and its or their securities, and no part of his or her compensation was, is or will be, directly or indirectly related to specific recommendations or views expressed in this report.

The research analysts for this report has not served as an officer, director or employee of the subject company PL or its research analysts have not engaged in market making activity for the subject company

Our sales people, traders, and other professionals or affiliates may provide oral or written market commentary or trading strategies to our clients that reflect opinions that are contrary to the opinions expressed herein, and our proprietary trading and investing businesses may make investment decisions that are inconsistent with the recommendations expressed herein. In reviewing these materials, you should be aware that any or all of the foregoing, among other things, may give rise to real or potential conflicts of interest.

PL and its associates, their directors and employees may (a) from time to time, have a long or short position in, and buy or sell the securities of the subject company or (b) be engaged in any other transaction involving such securities and earn brokerage or other compensation or act as a market maker in the financial instruments of the subject company or act as an advisor or lender/borrower to the subject company or may have any other potential conflict of interests with respect to any recommendation and other related information and opinions.