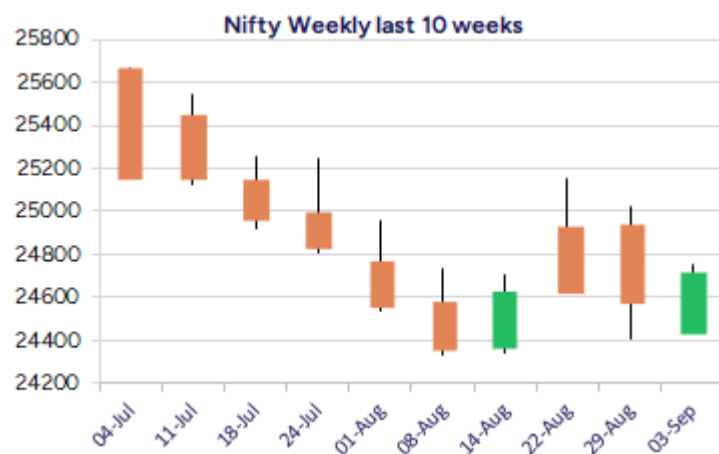
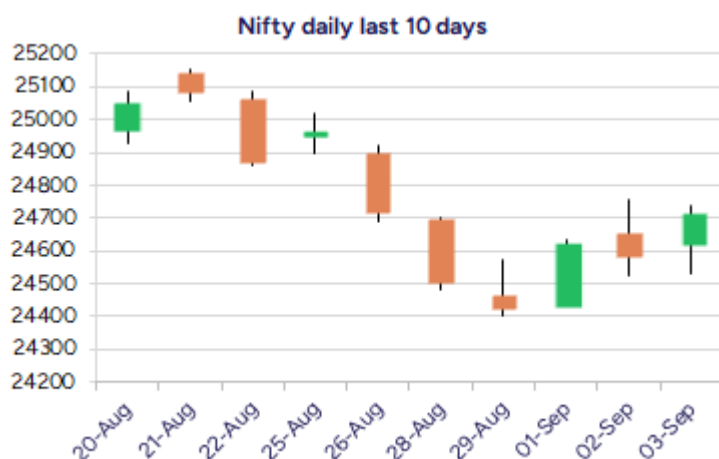


Date: 04th September 2025

* Sensex 80567.71 + 409.83

* Nifty 24715.05 + 135.45

* Bank Nifty 54067.55 + 406.55



*Blue candle → Close rate > Open rate * Red candle → Close rate < Open rate

Market Preview

Nifty ends above 24700 zone; bias optimistic

Nifty witnessed a significant pullback after the morning session to gain momentum as the day progressed to end just above the 24700 level. BankNifty well supported the Nifty index post the lunch session to gain momentum and raced to close above the 54000 level with bias maintained with an optimistic approach expecting for further gains. The market breadth was positive with the advance decline indicating a ratio of 5:2 at close.

Market Forecast

Nifty daily range 24600 - 24900

Nifty, indicated an optimistic positive move after the flat opening session to end above the 24700 zone with anticipation of positive cues from the GST rate outcome which would decide the further course of the market in the coming days. The index would need a decisive move past the important 50EMA level at 24800 zone which can trigger for fresh further upward move along with the broader markets beginning to participate to support the benchmark indices. The 24500 zone shall continue to remain as the important support zone for the index.

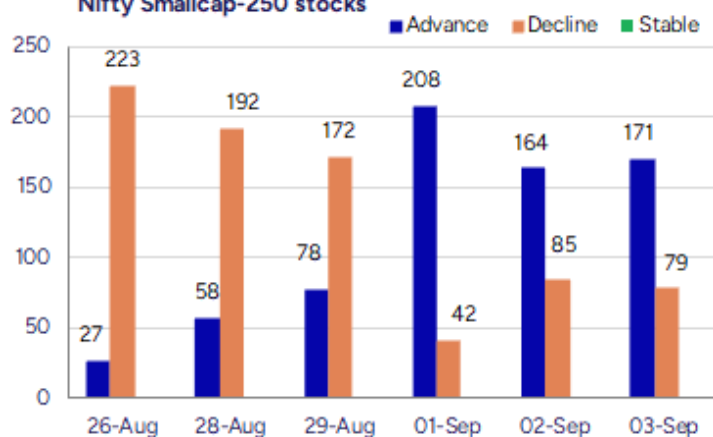
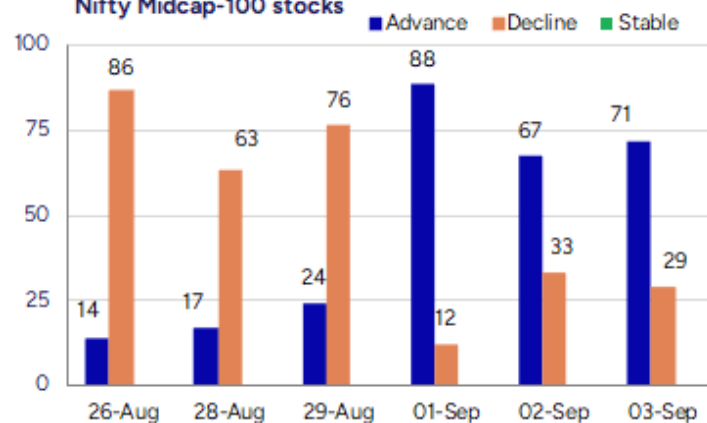
BankNifty maintaining the important support zone near 53500 zone has indicated a significant pullback to end above the 54000 zone with the banking giant HDFC Bank indicating prominent positive cues signalling a buy from the oversold zone after a long wait to boost the index anticipating for further gains in the coming sessions. The index would need a decisive move past the 55000 zone to overall improve the bias and thereafter, anticipate for fresh upward move in the coming days.

The support for the day is seen at 24600 levels, while the resistance is seen at 24900 levels. BankNifty would have the daily range of 53600-54800 levels.

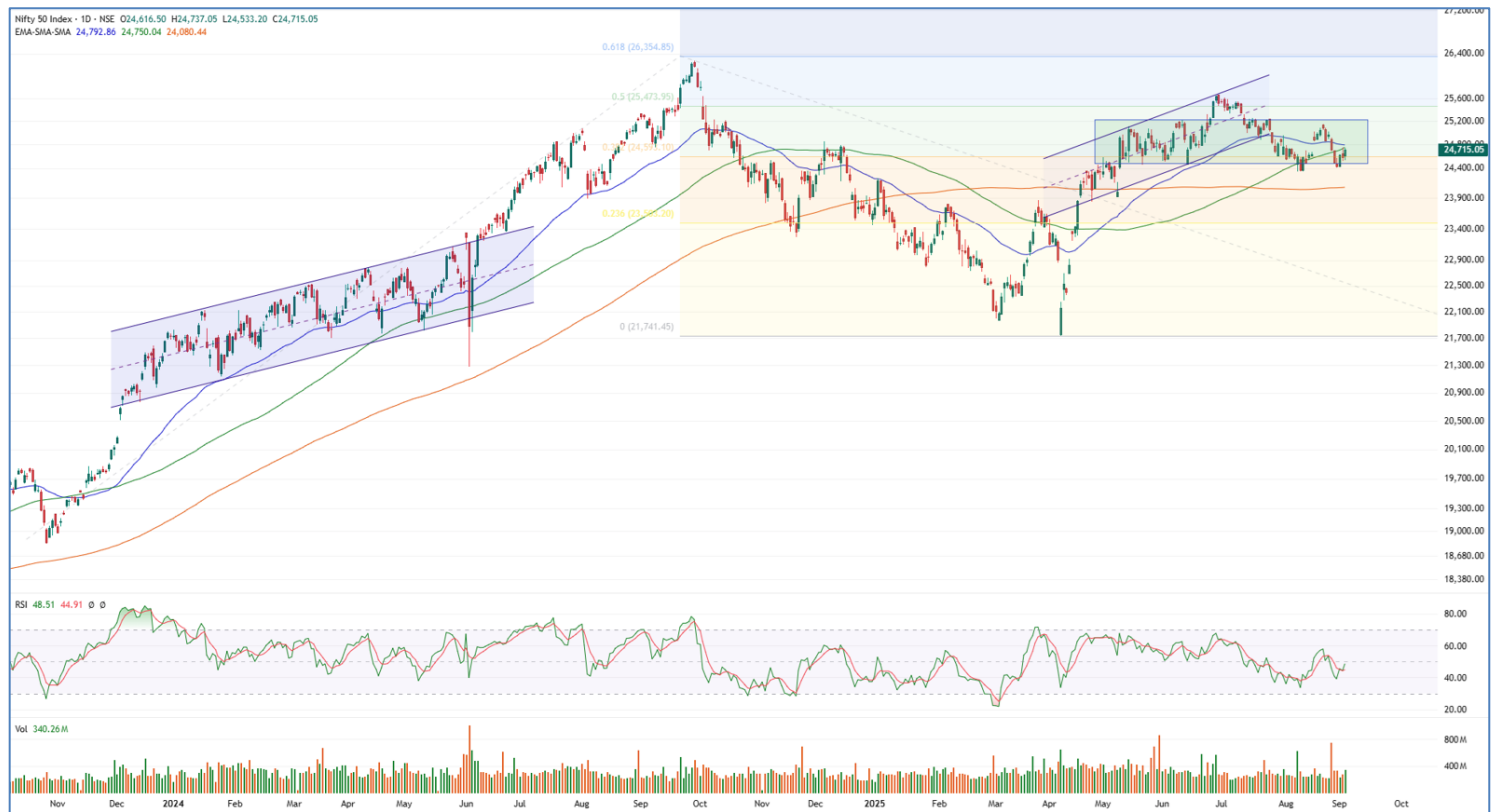
Indices	Period	Closing	% Chng	Trend	Reversal	2 Sup	1 Sup	Pivot	1 Res	2 Res
Nifty	Daily	24715.05	0.55%	1	24597.40	24458	24586	24662	24790	24866
	Weekly	24426.85	-1.78%	-8	24714.55	24003	24215	24617	24829	25232
	Monthly	24426.85	-1.38%	-1	24777.20	23826	24126	24639	24939	25452
Bank Nifty	Daily	54067.55	0.76%	1	53552.30	53347	53707	53922	54282	54496
	Weekly	53655.65	-2.71%	-8	55700.40	52497	53076	54190	54769	55883
	Monthly	53655.65	-4.12%	-1	56293.50	51929	52792	54474	55337	57019
Sensex	Daily	80567.71	0.51%	1	80277.50	79748	80158	80415	80824	81081
	Weekly	79809.65	-1.84%	-8	80839.30	78395	79102	80450	81157	82505
	Monthly	79809.65	-1.69%	-2	81431.75	78110	78960	80593	81443	83075

Gainers - Losers (Nifty 500 Stocks)

Gainers				Losers			
Company Name	Last Price	% Gain	Volume	Company Name	Last Price	% Loss	Volume
D P Wires	262.68	20	311991	KHFM HOSPITALIT	77.2	-10.96	10850
JITF Infralogis	320.7	20	902925	Diensten Tech	133	-10.41	34800
Newjaisa Techno	39.4	19.94	243000	Ushanti Colour	45.15	-9.7	10000
Hemisphere	167.73	18.19	14580553	Naman In-Store	86.5	-8.95	42400
Jai Corp	167.91	17.9	63903344	Globus Spirits	1103.1	-7.81	420243
Stallion India	187.5	15.33	11051845	Mahindra EPC	161.58	-7.22	1057028
TBO Tek	1591	15.08	5046008	Lumax Auto Tech	1048	-6.95	329818

Nifty Smallcap-250 stocks

Nifty Midcap-100 stocks


Nifty Daily chart with RSI indicator



BankNifty Daily chart with RSI indicator



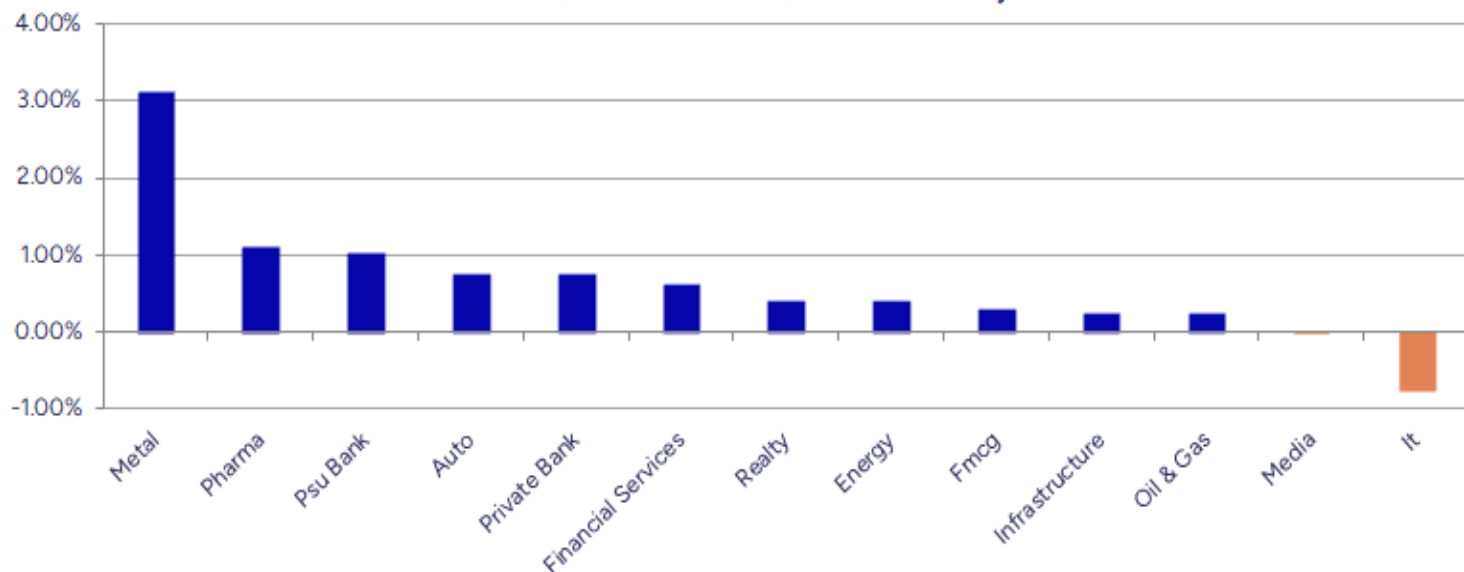
Breakouts - Cross above 200 DMA			
Company Name	LCP	Change %	200 DMA
Hemisphere	167.73	17.66	142.55
TBO Tek	1591	13.09	1406.79
Jai Corp	167.91	9.61	153.19
NMDC Steel	43	9.36	39.32
Astron Paper &	17.79	7.23	16.59
JISL	33.88	5.91	31.99
Thaai Casting	119.05	5.68	112.65
BLAL	224.62	5.29	213.34
Lakshmi Finance	218.75	5.11	208.11
Goldiam Inter	402.1	4.68	384.14
HCL Info	16.08	4.62	15.37
Saroja Pharma	49.5	3.56	47.8
Vijaya Diagnost	1065.2	3.21	1032.09
AksharChem	272.75	3.16	264.4
Reliance Power	47.75	3.13	46.3
Vinsys IT	393.05	3.09	381.26
Nalwa Sons	7079.5	2.98	6874.63
Sequent Scienti	176.41	2.46	172.18

* Stocks crossing above its Simple Moving Average (200DMA)

Breakdown - Cross below 200 DMA			
Company Name	LCP	Change %	200 DMA
Diensten Tech	133	-9.28	146.6
Lead Reclaim	77.65	-3.66	80.6
Krishna Defence	737.3	-2.38	755.26
Sasta Sundar	275.6	-1.60	280.07
Websol Energy	1320.6	-1.60	1342.05
Ruby Mills	223.9	-0.74	225.56
GMM Pfaudler	1169.6	-0.48	1175.23
Sadhav Shipping	116.15	-0.39	116.6
Rushil Decor	27.49	-0.33	27.58
Zensar Tech	778.65	-0.29	780.94
Rane Holdings	1510.2	-0.28	1514.39
Havells India	1566.1	-0.18	1568.96
Meghmani Organi	82.2	-0.13	82.31
Delta	86.49	-0.07	86.55
PTC Industries	13755	-0.02	13757.58

* Stocks crossing below its Simple Moving Average (200DMA)

Sectoral Indices - Gainers Losers for the day



Stocks witnessing a volume surge as compared to their 5 day average volume

Watch out for the stocks that have seen a huge spurt in its share price over the last three days

Volume Shockers - NSE					
Company name	LCP	% Chg	Volume	Avg Vol *	% Chg
Lakshmi Finance	218.75	8.97	234595	1626	14330
TBO Tek	1591	15.08	5045928	91233	5431
Netweb	2526.9	11.48	7511864	163390	4497
Jeena Sikho	758.35	7.58	818376	18612	4297
Aditya Vision	459.4	-6.17	9493183	221101	4194
Karnika Industr	203	0.72	371000	9360	3864
Aro Granite	39.6	10.46	200944	5820	3352
Blue Coast	56.63	4.99	47013	1391	3279
Hemisphere	167.73	18.19	14575908	558568	2510
Arfin India	36.13	5	2357527	110852	2027
Man Industries	412.35	6	3770995	189428	1891
Indo Thai Secu	155.33	5	773814	45963	1584
Prozone Intu	44.01	9.37	4933431	294904	1573
Naman In-Store	86.5	-8.95	42400	2560	1556
Jai Corp	167.91	17.9	63895987	3895324	1540
NMDC Steel	43	9.61	64783157	3985138	1526
BPL	86.92	9.61	508596	34788	1362
Tega Industries	1993.1	-0.13	345614	24591	1305
BLAL	224.62	5.34	563923	40411	1295
EIH Assoc Hotel	413.8	4.79	465770	35683	1205

* the Average Volume of last 5 days

Price Shockers - NSE					
Company name	LCP	Prv Close	% Chg	Volume	
Agni Green	40.05	25.35	57.99	475000	
Jai Corp	167.91	120.1	39.81	63903344	
Pritish Nandy	37.31	27.34	36.47	185682	
Zenithexpo	334.95	251.68	33.09	25739	
Astron Paper	17.79	13.38	32.96	36447	
Kaushalya Infra	1522.3	1169.45	30.17	0	
Sharp Chucks	95.95	74.95	28.02	110000	
Ola Electric	68.99	54.05	27.64	1.044E+09	
Hemisphere	167.73	132.63	26.46	14580553	
Rajshree Sugars	46.97	37.21	26.23	1195742	
Stallion India	187.5	148.88	25.94	11051845	
JITF Infralogis	320.7	254.7	25.91	902925	
ANB Metal Cast	231.75	189.45	22.33	60000	
Vimta Labs	812.1	666.25	21.89	17642376	
Jindal Photo	1219.8	1029.4	18.5	114600	
D P Wires	262.68	223.01	17.79	311991	
Mahamaya Steel	386.85	331.5	16.7	185782	
Dwarikesh Sugar	45.96	39.43	16.56	1305919	
Shri Hare-Krish	74.95	64.55	16.11	58000	
Barak Vally Cem	47.44	40.95	15.85	127586	

* the % price rise of the last 3 days

Nifty 50 stocks - Summary Details											
Symbol	LTP	Chng	% Chng	Volume (lacs)	Turnover (crs.)	52w High	Diff with 52w H	52w Low	Diff with 52w L	365 days % chng	30 days % chng
NIFTY 50	24715.05	135.45	0.55%	3402.67	23532.09	26277.35	5.95%	21743.65	13.67%	0.06%	-2.77%
ADANIENT	2292.00	17.80	0.78%	4.44	101.12	3211.00	28.62%	2025.00	13.19%	-3.26%	-25.24%
ADANIPTS	1334.00	-2.20	-0.16%	17.75	236.84	1499.50	11.04%	995.65	33.98%	-0.81%	-10.59%
APOLLOHOSP	7745.00	63.00	0.82%	3.21	248.26	7980.00	2.94%	6001.00	29.06%	4.50%	11.66%
ASIANPAINT	2560.00	20.00	0.79%	9.26	236.15	3394.90	24.59%	2124.75	20.48%	4.48%	-19.39%
AXISBANK	1055.10	-1.10	-0.10%	83.03	876.56	1281.65	17.68%	933.50	13.03%	-0.58%	-11.15%
BAJAJ-AUTO	9116.00	85.50	0.95%	3.23	293.20	12774.00	28.64%	7089.35	28.59%	12.26%	-18.83%
BAJAJFINSV	1971.00	15.10	0.77%	9.34	183.13	2135.00	7.68%	1551.65	27.03%	2.07%	6.27%
BAJFINANCE	896.80	6.70	0.75%	54.94	490.59	978.80	8.38%	645.10	39.02%	1.66%	-88.04%
BEL	378.95	2.35	0.62%	99.18	375.60	436.00	13.08%	240.25	57.73%	-0.16%	26.84%
BHARTIARTL	1882.80	-4.40	-0.23%	38.03	715.12	2045.80	7.97%	1511.00	24.61%	0.15%	20.10%
CIPLA	1579.60	10.40	0.66%	11.60	183.59	1702.05	7.19%	1335.00	18.32%	4.42%	-4.70%
COALINDIA	389.40	9.30	2.45%	81.11	314.24	529.00	26.39%	349.25	11.50%	2.04%	-27.02%
DRREDDY	1263.00	9.30	0.74%	12.95	163.22	1414.99	10.74%	1020.00	23.82%	2.71%	-81.76%
EICHERMOT	6374.50	25.50	0.40%	5.36	340.37	6388.00	0.21%	4508.75	41.38%	14.85%	29.26%
GRASIM	2789.00	9.20	0.33%	5.00	139.44	2898.40	3.77%	2276.95	22.49%	2.12%	3.31%
HCLTECH	1465.20	-0.50	-0.03%	18.00	262.99	2012.20	27.18%	1302.75	12.47%	0.94%	-18.87%
HDFCBANK	953.95	9.45	1.00%	160.83	1524.08	1018.85	6.37%	806.50	18.28%	-53.06%	-41.95%
HDFCLIFE	777.25	-5.50	-0.70%	18.80	145.73	820.75	5.30%	584.30	33.02%	5.53%	5.02%
HEROMOTOCO	5345.00	33.00	0.62%	6.60	351.27	6246.25	14.43%	3344.00	59.84%	23.20%	-4.77%
HINDALCO	742.70	21.75	3.02%	89.86	660.49	772.65	3.88%	546.45	35.91%	7.21%	5.42%
HINDUNILVR	2670.00	-7.00	-0.26%	10.11	269.65	3035.00	12.03%	2136.00	25.00%	4.83%	-4.02%
ICICIBANK	1396.60	2.40	0.17%	98.13	1366.22	1500.00	6.89%	1186.00	17.76%	-5.26%	13.35%
INDUSINDBK	767.80	16.60	2.21%	19.33	147.43	1498.00	48.74%	606.00	26.70%	-4.15%	-48.16%
INFY	1480.00	-18.70	-1.25%	46.23	683.98	2006.45	26.24%	1307.00	13.24%	1.98%	-23.71%
ITC	411.10	4.35	1.07%	129.36	531.10	528.50	22.21%	390.15	5.37%	-2.33%	-20.25%
JIOFIN	313.90	2.15	0.69%	113.60	354.40	363.00	13.53%	198.65	58.02%	-5.39%	-9.61%
JSWSTEEL	1074.70	30.70	2.94%	33.57	358.42	1089.20	1.33%	880.00	22.13%	1.58%	11.01%
KOTAKBANK	1962.30	19.80	1.02%	40.07	780.10	2301.90	14.75%	1679.05	16.87%	-2.50%	9.11%
LT	3601.00	26.10	0.73%	13.15	471.24	3963.50	9.15%	2965.30	21.44%	-0.35%	-2.94%
M&M	3288.00	53.50	1.65%	26.73	872.97	3432.00	4.20%	2425.00	35.59%	2.38%	16.47%
MARUTI	14911.00	69.00	0.46%	5.62	836.99	14991.00	0.53%	10725.00	39.03%	20.65%	19.43%
NESTLEIND	1192.30	-8.60	-0.72%	8.28	99.07	1389.00	14.16%	1055.00	13.01%	-47.25%	-52.15%
NTPC	334.50	-1.80	-0.54%	107.78	361.75	448.45	25.41%	292.80	14.24%	1.63%	-17.98%
ONGC	239.15	-0.34	-0.14%	43.64	104.60	331.95	27.96%	205.00	16.66%	1.14%	-26.58%
POWERGRID	286.00	-0.70	-0.24%	301.79	866.04	366.25	21.91%	247.30	15.65%	-1.56%	-14.56%
RELIANCE	1372.00	5.50	0.40%	78.47	1074.20	1551.00	11.54%	1114.85	23.07%	-1.95%	-54.94%
SBILIFE	1810.00	-4.50	-0.25%	12.50	226.14	1936.00	6.51%	1372.55	31.87%	1.02%	-3.93%
SBIN	813.00	9.10	1.13%	42.61	345.32	875.45	7.13%	680.00	19.56%	1.25%	-2.22%
SHRIRAMFIN	587.25	2.65	0.45%	66.12	385.85	730.45	19.60%	493.35	19.03%	-4.82%	-81.87%
SUNPHARMA	1579.90	14.70	0.94%	20.91	328.90	1960.35	19.41%	1553.05	1.73%	-3.96%	-13.81%
TATACONSUM	1105.00	4.20	0.38%	12.44	136.50	1234.30	10.48%	882.90	25.16%	2.84%	-8.24%
TATAMOTORS	691.80	7.40	1.08%	60.94	420.48	1105.00	37.39%	535.75	29.13%	5.48%	-37.36%
TATASTEEL	167.83	9.44	5.96%	823.50	1362.31	170.18	1.38%	122.62	36.87%	3.52%	3.60%
TCS	3100.00	-11.50	-0.37%	18.00	558.41	4588.00	32.43%	2991.60	3.62%	3.61%	-31.18%
TECHM	1508.90	-3.90	-0.26%	14.32	215.89	1807.70	16.53%	1209.40	24.76%	5.14%	-8.13%
TITAN	3688.00	67.40	1.86%	7.92	290.63	3867.00	4.63%	2925.00	26.09%	9.19%	0.92%
TRENT	5470.00	58.00	1.07%	8.33	450.75	8345.00	34.45%	4488.00	21.88%	4.48%	-24.29%
ULTRACEMCO	12702.00	-28.00	-0.22%	1.40	178.07	12930.00	1.76%	10047.85	26.42%	5.09%	11.42%
WIPRO	249.54	-1.39	-0.55%	38.60	96.53	324.60	23.12%	228.00	9.45%	3.37%	-52.87%
ETERNAL	326.30	3.90	1.21%	466.71	1516.15	331.35	1.52%	194.80	67.51%	5.79%	#VALUE!

Disclaimer / Disclosures

ANALYST CERTIFICATION

I, Mrs. Vaishali Parekh B.com, Research Analyst, author and the name subscribed to this report, hereby certify that all of the views expressed in this research report accurately reflect our views about the subject issuer(s) or securities. We also certify that no part of our compensation was, is, or will be directly or indirectly related to the specific recommendation(s) or view(s) in this report.

Terms & conditions and other disclosures:

Prabhudas Lilladher Pvt. Ltd, Mumbai, India (hereinafter referred to as "PL") is engaged in the business of Stock Broking, Portfolio Manager, Depository Participant and distribution for third party financial products. PL is a subsidiary of Prabhudas Lilladher Advisory Services Pvt Ltd. which has its various subsidiaries engaged in business of commodity broking, investment banking, financial services (margin funding) and distribution of third party financial/other products, details in respect of which are available at www.plindia.com

This document has been prepared by the Research Division of PL and is meant for use by the recipient only as information and is not for circulation. This document is not to be reported or copied or made available to others without prior permission of PL. It should not be considered or taken as an offer to sell or a solicitation to buy or sell any security.

The information contained in this report has been obtained from sources that are considered to be reliable. However, PL has not independently verified the accuracy or completeness of the same. Neither PL nor any of its affiliates, its directors or its employees accepts any responsibility of whatsoever nature for the information, statements and opinion given, made available or expressed herein or for any omission therein.

Recipients of this report should be aware that past performance is not necessarily a guide to future performance and value of investments can go down as well. The suitability or otherwise of any investments will depend upon the recipient's particular circumstances and, in case of doubt, advice should be sought from an independent expert/advisor.

Either PL or its affiliates or its directors or its employees or its representatives or its clients or their relatives may have position(s), make market, act as principal or engage in transactions of securities of companies referred to in this report and they may have used the research material prior to publication.

PL may from time to time solicit or perform investment banking or other services for any company mentioned in this document.

PL is registered as Research Analyst under Securities and Exchange Board of India (Research Analysts) Regulations, 2014 PL submits that no material disciplinary action has been taken on us by any Regulatory Authority impacting Equity Research Analysis activities.

PL or its research analysts or its associates or his relatives do not have any financial interest in the subject company.

PL or its research analysts or its associates or his relatives do not have actual/beneficial ownership of one per cent or more securities of the subject company at the end of the month immediately preceding the date of publication of the research report.

PL or its research analysts or its associates or his relatives do not have any material conflict of interest at the time of publication of the research report.

PL or its associates might have received compensation from the subject company in the past twelve months.

PL or its associates might have managed or co-managed public offering of securities for the subject company in the past twelve months or mandated by the subject company for any other assignment in the past twelve months.

PL or its associates might have received any compensation for investment banking or merchant banking or brokerage services from the subject company in the past twelve months.

PL or its associates might have received any compensation for products or services other than investment banking or merchant banking or brokerage services from the subject company in the past twelve months PL or its associates might have received any compensation or other benefits from the subject company or third party in connection with the research report.

PL encourages independence in research report preparation and strives to minimize conflict in preparation of research report. PL or its analysts did not receive any compensation or other benefits from the subject Company or third party in connection with the preparation of the research report. PL or its Research Analysts do not have any material conflict of interest at the time of publication of this report.

It is confirmed that Mrs.Vaishali Parekh B.com, Research Analyst of this report has not received any compensation from the companies mentioned in the report in the preceding twelve months compensation of our Research Analysts is not based on any specific merchant banking, investment banking or brokerage service transactions.

The Research analysts for this report certifies that all of the views expressed in this report accurately reflect his or her personal views about the subject company or companies and its or their securities, and no part of his or her compensation was, is or will be, directly or indirectly related to specific recommendations or views expressed in this report.

The research analysts for this report has not served as an officer, director or employee of the subject company PL or its research analysts have not engaged in market making activity for the subject company

Our sales people, traders, and other professionals or affiliates may provide oral or written market commentary or trading strategies to our clients that reflect opinions that are contrary to the opinions expressed herein, and our proprietary trading and investing businesses may make investment decisions that are inconsistent with the recommendations expressed herein. In reviewing these materials, you should be aware that any or all of the foregoing, among other things, may give rise to real or potential conflicts of interest.

PL and its associates, their directors and employees may (a) from time to time, have a long or short position in, and buy or sell the securities of the subject company or (b) be engaged in any other transaction involving such securities and earn brokerage or other compensation or act as a market maker in the financial instruments of the subject company or act as an advisor or lender/borrower to the subject company or may have any other potential conflict of interests with respect to any recommendation and other related information and opinions.