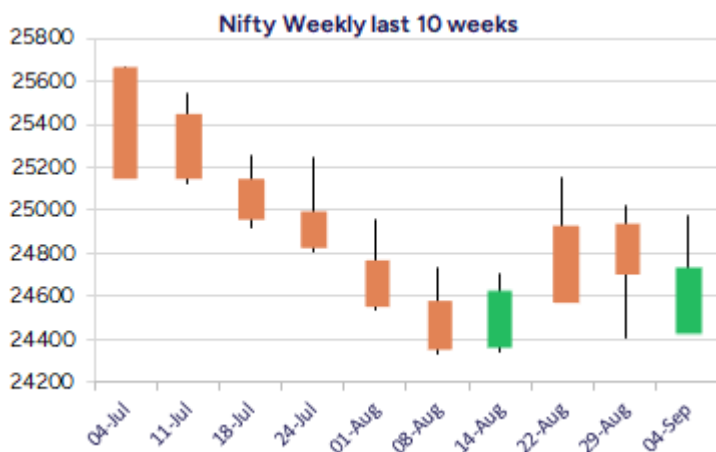
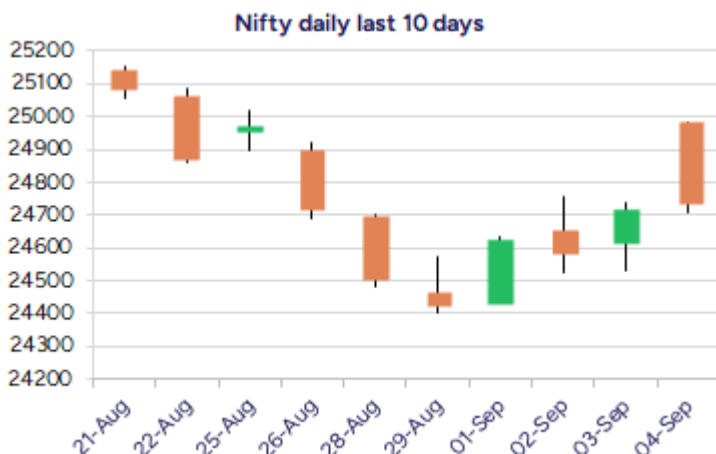


Date: 05th Sep 2025

* Sensex 80718.01 + 150.30

* Nifty 24734.30 + 19.25

* Bank Nifty 54075.45 + 07.90



*Blue candle → Close rate > Open rate * Red candle → Close rate < Open rate

Market Preview

Nifty ends flat erasing gains

Nifty witnessed heavy profit booking after opening on a strong note near the 25000 zone erasing the gains to end on a flat note. BankNifty slipped once again to 54000 zone whipping off the gains witnessed in the morning session and would need some clarity in the coming sessions sustaining above the 54000 level. The market breadth turned weak with the advance decline indicating a ratio of 2:3 at close.

Market Forecast

Nifty daily range 24600 - 24900

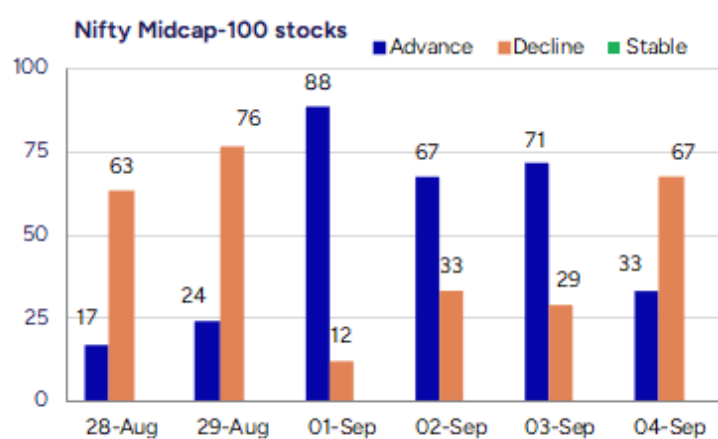
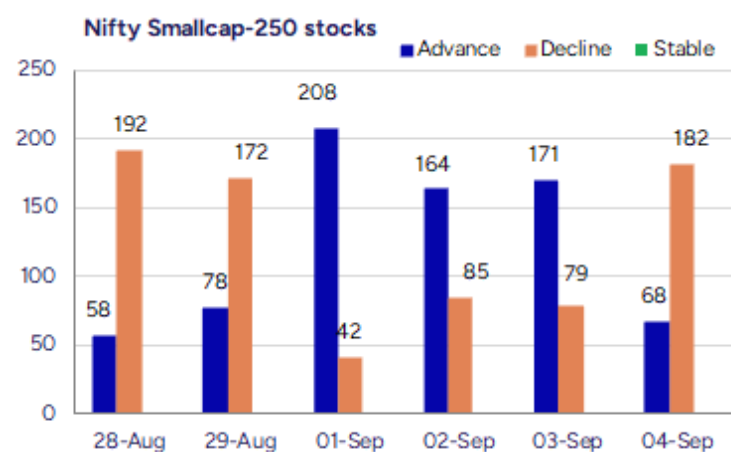
Nifty, after opening on a strong note fizzled out as the day progressed with profit booking witnessed to erase the entire gain and closed on a flat note with bias overall maintained optimistic and need to check in the coming sessions whether it can breach above the important 50EMA level at 24800 zone decisively to establish conviction. As mentioned earlier, the 24500 zone shall continue to remain as the important support zone for the index. BankNifty erased the early gains and slipped to end on a flat note with HDFC Bank among the lone participant which is looking capable of a pullback in the coming days with bias improving and indicating good upside move. As said earlier, the index would need a decisive move past the 55000 zone to overall improve the bias and thereafter, anticipate for fresh upward move in the coming days.

The support for the day is seen at 24600 levels, while the resistance is seen at 24900 levels. BankNifty would have the daily range of 53600-54800 levels.

Indices	Period	Closing	% Chng	Trend	Reversal	2 Sup	1 Sup	Pivot	1 Res	2 Res
Nifty	Daily	24734.30	0.08%	2	24579.45	24535	24635	24808	24907	25080
	Weekly	24426.85	-1.78%	-8	24714.55	24003	24215	24617	24829	25232
	Monthly	24426.85	-1.38%	-1	24777.20	23826	24126	24639	24939	25452
Bank Nifty	Daily	54075.45	0.01%	2	53523.40	53687	53881	54166	54360	54645
	Weekly	53655.65	-2.71%	-8	55700.40	52497	53076	54190	54769	55883
	Monthly	53655.65	-4.12%	-1	56293.50	51929	52792	54474	55337	57019
Sensex	Daily	80718.01	0.19%	2	80176.20	80080	80399	80928	81247	81776
	Weekly	79809.65	-1.84%	-8	80839.30	78395	79102	80450	81157	82505
	Monthly	79809.65	-1.69%	-2	81431.75	78110	78960	80593	81443	83075

Gainers - Losers (Nifty 500 Stocks)

Gainers				Losers			
Company Name	Last Price	% Gain	Volume	Company Name	Last Price	% Loss	Volume
RB Denims	103	5	158567	Kore Digital	220	-15.79	259500
Gretex Corporat	316.2	3	444234	Agni Green	36.05	-9.99	335000
STL Networks	21.75	117.5	2653633	Flysbs Aviation	614	-9	285600
Sahasra Electro	343.5	20	308800	Force Motors	18014	-8.95	224088
Moschip Tech	225.87	17.22	45699154	Delta Corp	87	-8.63	9811708
Atul Auto	498	14.54	10666216	ANB Metal Cast	212.6	-8.26	42400
Electronics Mar	147.1	12.46	59140494	Quicktouch Tech	46.05	-7.9	5000



Nifty Daily chart with RSI indicator



BankNifty Daily chart with RSI indicator



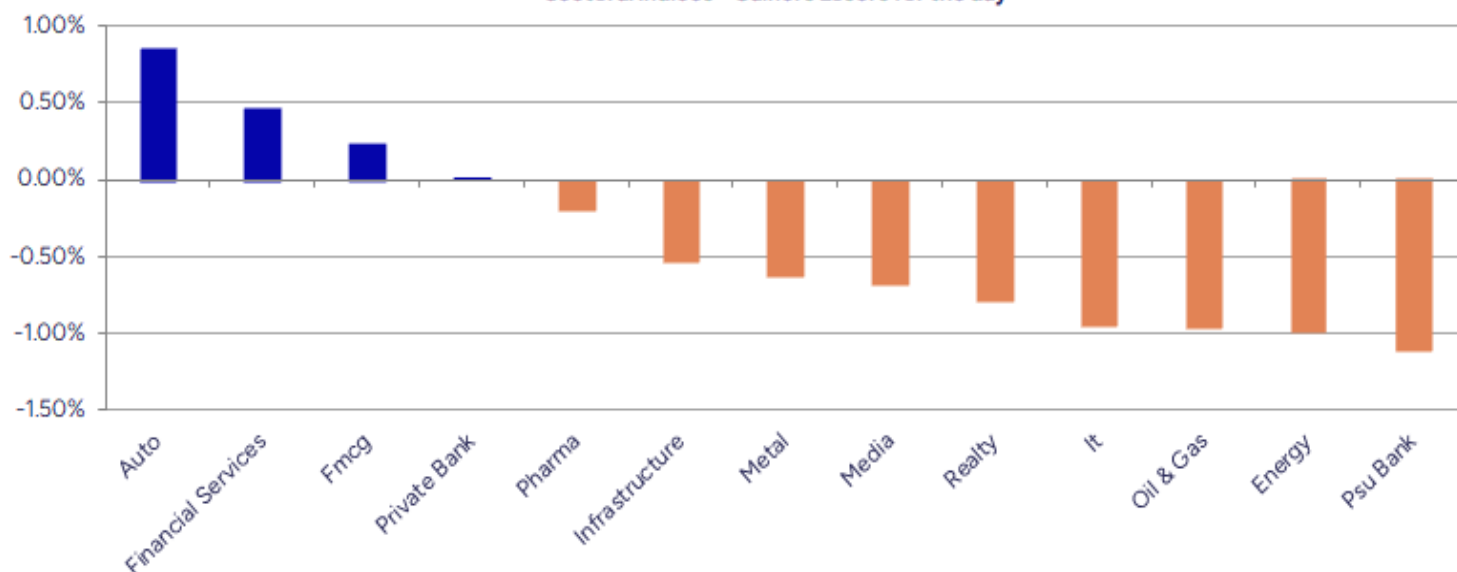
Breakouts - Cross above 200 DMA			
Company Name	LCP	Change %	200 DMA
Archidply Ind	105.4	4.71	100.66
Capital SFB	297.95	3.04	289.15
Namo Ewaste Man	180.05	2.99	174.83
DOMS Industries	2690	2.97	2612.44
Electronics Mar	145.11	2.91	141.01
Brooks Labs	145.53	2.49	142
E2E Networks	2854	2.15	2794.01
Delta	88.01	1.72	86.52
Sansera	1325	1.56	1304.71
Sarla Performan	101.7	1.42	100.28
Kewal Kiran	530	1.38	522.78
Medi Assist Hea	528.95	1.38	521.75
Vardhman Hold	3989.9	1.32	3937.93
Silkflex Poly	84	1.31	82.91
Lead Reclaim	81.4	1.14	80.48
Atul Auto	497.85	1.11	492.4
Havells India	1585.3	1.05	1568.77
Innova Captab	929.4	0.83	921.79

* Stocks crossing above its Simple Moving Average (200DMA)

Breakdown - Cross below 200 DMA			
Company Name	LCP	Change %	200 DMA
Shah Alloys	58.03	-4.04	60.47
Forcas Studio	94.7	-3.66	98.3
Pritish Nandy	34.8	-3.17	35.94
Indoco Remedies	273.7	-2.73	281.38
Mastek	2489	-2.58	2554.96
MOTHERSON	94.5	-2.04	96.47
Prakash Ind	160.44	-1.97	163.67
Lloyds Luxuries	90.75	-1.66	92.28
RHI Magnesita	471	-1.42	477.8
Reliance Infra	288	-1.38	292.04
Guj Ind Power	194.37	-1.33	196.99
Voltas	1399.1	-1.26	1417.02
AGI Greenpac	865	-1.19	875.45
Granules India	510.1	-1.10	515.77
Tolins Tyres	155.6	-1.02	157.2
Madhav Marbles	47	-0.89	47.42
Tata Power	382.7	-0.87	386.05
Shree Tirupati	55.35	-0.84	55.82

* Stocks crossing below its Simple Moving Average (200DMA)

Sectoral Indices - Gainers Losers for the day



Stocks witnessing a volume surge as compared to their 5 day average volume

Watch out for the stocks that have seen a huge spurt in its share price over the last three days

Volume Shockers - NSE					
Company name	LCP	% Chg	Volume	Avg Vol *	% Chg
Atul Auto	500.35	15.08	10416915	55409	18700
Weizmann	112.4	5.03	150029	2027	7300
DOMS Industries	2691.5	7.52	2633990	37022	7015
APTUS VALUE	327.65	-1.35	44268766	1056560	4090
Netweb	2650.2	4.88	5979232	163390	3559
Gandhi Spl Tube	951.55	9.92	476404	13599	3403
Sapphire Foods	327.1	1.22	2007363	68650	2824
Kore Digital	222	-15.02	243300	10560	2204
Escorts Kubota	3616.5	-1.66	2544993	122433	1979
Jeena Sikho	779	2.72	380964	18612	1947
Electronics Mar	147.19	12.53	58673228	3179950	1745
Kokuyo Camlin	117.55	1.01	722423	39642	1722
KCK Industries	39.15	-4.28	240000	13600	1665
Campus	265.35	-1.5	5815537	357598	1526
MIC Electronics	56.85	10.43	38379840	2465334	1457
South West Pinn	149.69	4.55	359846	23128	1456
Maxposure	57.2	-0.61	76000	5800	1210
Cool Caps	82.45	0.92	107500	8400	1180
Nakoda Group	32.07	0.66	1487851	122070	1119
Zodiac Clothing	96.52	-6.06	71242	6095	1069

* the Average Volume of last 5 days

Price Shockers - NSE				
Company name	LCP	Prv Close	% Chg	Volume
Kaushalya Infra	1674.5	1268.6	32	0
Moschip Tech	225.6	171.85	31.28	45821923
JITF Infralogis	338.5	257.95	31.23	1087540
Jai Corp	159.3	124.21	28.25	13023998
E2E Networks	2854	2270	25.73	433751
Astron Paper	18.2	14.71	23.73	565410
Vimta Labs	795.7	653.85	21.69	6836785
Hemisphere	166.15	138.48	19.98	6722758
Rajshree Sugars	44.88	37.72	18.98	98480
Sharp Chucks	94.95	80	18.69	110000
Agni Green	36.05	30.4	18.59	335000
Apollo Micro Sy	313.8	266.6	17.7	32941245
Kavveri Defence	77.84	67.25	15.75	75938
Swan Defence	474.9	410.3	15.74	361
Jay BharatMarut	101.98	88.11	15.74	339538
Osia Hyper Reta	21.25	18.37	15.68	157406
Yaari Digital	19.8	17.12	15.65	93217
ANI Integrated	89.15	77.1	15.63	600
Forge Auto Intl	145.6	126.25	15.33	21600
Purple United	457.9	397.05	15.33	9000

* the % price rise of the last 3 days

Nifty 50 stocks - Summary Details											
Symbol	LTP	Chng	% Chng	Volume (lacs)	Turnover (crs.)	52w High	Diff with 52w H	52w Low	Diff with 52w L	365 days % chng	30 days % chng
NIFTY 50	24734.30	19.25	0.08%	3140.81	30250.99	26277.35	5.87%	21743.65	13.75%	-0.03%	-2.23%
ADANIENT	2280.00	-8.70	-0.38%	3.93	89.98	3211.00	28.99%	2025.00	12.59%	-3.17%	-24.62%
ADANIPTS	1330.10	-2.30	-0.17%	13.50	180.19	1498.10	11.21%	995.65	33.59%	-4.07%	-9.95%
APOLLOHOSP	7891.00	155.00	2.00%	3.86	303.77	7980.00	1.12%	6001.00	31.49%	5.86%	13.02%
ASIANPAINT	2570.00	16.10	0.63%	9.33	239.83	3394.90	24.30%	2124.75	20.96%	4.25%	-19.05%
AXISBANK	1050.90	-3.80	-0.36%	80.88	850.92	1281.65	18.00%	933.50	12.58%	-1.30%	-11.49%
BAJAJ-AUTO	9095.00	-21.00	-0.23%	6.53	598.24	12774.00	28.80%	7089.35	28.29%	11.34%	-17.45%
BAJAJFINSV	2003.00	36.90	1.88%	24.59	495.01	2135.00	6.18%	1551.65	29.09%	1.68%	5.39%
BAJFINANCE	933.05	36.75	4.10%	217.38	2037.69	978.80	4.67%	645.10	44.64%	1.24%	-87.81%
BEL	372.95	-5.75	-1.52%	92.86	348.77	436.00	14.46%	240.25	55.23%	-2.79%	27.44%
BHARTIARTL	1879.80	-4.10	-0.22%	52.05	980.51	2045.80	8.11%	1511.00	24.41%	-1.60%	20.72%
CIPLA	1577.30	-1.10	-0.07%	6.14	97.05	1702.05	7.33%	1335.00	18.15%	4.18%	-4.52%
COALINDIA	391.25	1.45	0.37%	55.15	215.18	523.60	25.28%	349.25	12.03%	4.03%	-24.98%
DRREDDY	1254.20	-8.00	-0.63%	12.31	155.25	1405.90	10.79%	1020.00	22.96%	3.04%	-81.58%
EICHERMOT	6431.00	59.50	0.93%	11.82	770.12	6713.00	4.20%	4508.75	42.63%	13.35%	30.94%
GRASIM	2819.70	38.30	1.38%	11.77	333.36	2898.40	2.72%	2276.95	23.84%	-0.23%	2.75%
HCLTECH	1444.20	-21.90	-1.49%	21.92	318.46	2012.20	28.23%	1302.75	10.86%	-0.56%	-18.12%
HDFCBANK	960.95	6.50	0.68%	175.97	1691.67	1018.85	5.68%	806.50	19.15%	-52.09%	-41.71%
HDFCLIFE	754.55	-21.90	-2.82%	100.40	777.34	820.75	8.07%	584.30	29.14%	4.95%	2.33%
HEROMOTOCO	5356.00	7.00	0.13%	11.88	640.21	6246.25	14.25%	3344.00	60.17%	17.93%	-5.27%
HINDALCO	738.00	-4.95	-0.67%	37.63	278.68	772.65	4.48%	546.45	35.05%	8.03%	9.43%
HINDUNILVR	2665.00	0.30	0.01%	24.95	672.18	3035.00	12.19%	2136.00	24.77%	4.76%	-4.64%
ICICIBANK	1408.00	11.00	0.79%	105.65	1487.90	1500.00	6.13%	1186.00	18.72%	-4.52%	11.97%
INDUSINDBK	755.00	-13.10	-1.71%	14.01	106.60	1498.00	49.60%	606.00	24.59%	-4.47%	-46.54%
INFY	1461.50	-17.60	-1.19%	57.88	850.23	2006.45	27.16%	1307.00	11.82%	-0.09%	-23.81%
ITC	415.75	4.00	0.97%	272.74	1141.57	528.50	21.33%	390.15	6.56%	-1.22%	-19.17%
JIOFIN	309.80	-3.90	-1.24%	103.90	323.61	363.00	14.66%	198.65	55.95%	-6.05%	-10.42%
JSWSTEEL	1074.00	1.80	0.17%	9.23	98.86	1089.20	1.40%	880.00	22.05%	1.54%	15.17%
KOTAKBANK	1947.00	-13.20	-0.67%	18.91	369.76	2301.90	15.42%	1679.05	15.96%	-1.84%	9.89%
LT	3592.60	-8.20	-0.23%	14.35	515.60	3963.50	9.36%	2965.30	21.15%	-0.83%	-2.42%
M&M	3480.00	194.00	5.90%	76.00	2656.05	3550.00	1.97%	2425.00	43.51%	2.68%	18.00%
MARUTI	14680.00	-247.00	-1.65%	7.84	1164.90	15240.00	3.67%	10725.00	36.88%	20.72%	20.41%
NESTLEIND	1211.40	16.60	1.39%	33.46	408.63	1389.00	12.79%	1055.00	14.82%	-47.54%	-52.79%
NTPC	330.30	-0.60	-0.18%	79.34	263.37	448.45	26.35%	292.80	12.81%	0.68%	-17.75%
ONGC	236.01	-1.81	-0.76%	87.79	207.54	328.00	28.05%	205.00	15.13%	1.81%	-25.80%
POWERGRID	282.35	-3.70	-1.29%	59.46	168.37	366.25	22.91%	247.30	14.17%	-0.66%	-14.52%
RELIANCE	1359.10	-13.50	-0.98%	132.23	1803.50	1551.00	12.37%	1114.85	21.91%	-2.76%	-54.52%
SBILIFE	1795.10	-15.60	-0.86%	21.51	389.80	1936.00	7.28%	1372.55	30.79%	-1.14%	-6.12%
SBIN	809.85	-2.30	-0.28%	44.72	362.75	875.45	7.49%	680.00	19.10%	2.07%	-1.53%
SHRIRAMFIN	587.00	0.70	0.12%	50.54	297.07	730.45	19.64%	493.35	18.98%	-6.18%	-82.08%
SUNPHARMA	1581.00	2.30	0.15%	22.99	361.85	1960.35	19.35%	1553.05	1.80%	-3.83%	-12.85%
TATACONSUM	1074.00	-30.40	-2.75%	24.08	261.26	1234.30	12.99%	882.90	21.64%	2.96%	-7.89%
TATAMOTORS	688.00	-4.05	-0.59%	134.39	934.70	1100.00	37.45%	535.75	28.42%	5.88%	-36.22%
TATASTEEL	166.70	-1.15	-0.69%	263.17	440.09	170.18	2.04%	122.62	35.95%	5.20%	10.32%
TCS	3095.80	-1.70	-0.05%	14.81	459.43	4555.90	32.05%	2991.60	3.48%	0.75%	-31.36%
TECHM	1496.90	-11.30	-0.75%	10.39	156.07	1807.70	17.19%	1209.40	23.77%	2.25%	-8.27%
TITAN	3678.00	-12.60	-0.34%	6.36	234.99	3867.00	4.89%	2925.00	25.74%	9.96%	1.92%
TRENT	5541.00	62.00	1.13%	14.12	790.33	8345.00	33.60%	4488.00	23.46%	4.38%	-22.20%
ULTRACEMCO	12646.00	-87.00	-0.68%	3.05	391.49	13097.00	3.44%	10047.85	25.86%	3.88%	11.10%
WIPRO	245.45	-4.11	-1.65%	50.21	123.88	324.60	24.38%	228.00	7.65%	1.43%	-53.44%
ETERNAL	327.55	1.45	0.44%	432.84	1406.39	331.35	1.15%	194.80	68.15%	6.83%	#VALUE!

Disclaimer / Disclosures

ANALYST CERTIFICATION

I, Mrs. Vaishali Parekh B.com, Research Analyst, author and the name subscribed to this report, hereby certify that all of the views expressed in this research report accurately reflect our views about the subject issuer(s) or securities. We also certify that no part of our compensation was, is, or will be directly or indirectly related to the specific recommendation(s) or view(s) in this report.

Terms & conditions and other disclosures:

Prabhudas Lilladher Pvt. Ltd, Mumbai, India (hereinafter referred to as "PL") is engaged in the business of Stock Broking, Portfolio Manager, Depository Participant and distribution for third party financial products. PL is a subsidiary of Prabhudas Lilladher Advisory Services Pvt Ltd. which has its various subsidiaries engaged in business of commodity broking, investment banking, financial services (margin funding) and distribution of third party financial/other products, details in respect of which are available at www.plindia.com

This document has been prepared by the Research Division of PL and is meant for use by the recipient only as information and is not for circulation. This document is not to be reported or copied or made available to others without prior permission of PL. It should not be considered or taken as an offer to sell or a solicitation to buy or sell any security.

The information contained in this report has been obtained from sources that are considered to be reliable. However, PL has not independently verified the accuracy or completeness of the same. Neither PL nor any of its affiliates, its directors or its employees accepts any responsibility of whatsoever nature for the information, statements and opinion given, made available or expressed herein or for any omission therein.

Recipients of this report should be aware that past performance is not necessarily a guide to future performance and value of investments can go down as well. The suitability or otherwise of any investments will depend upon the recipient's particular circumstances and, in case of doubt, advice should be sought from an independent expert/advisor.

Either PL or its affiliates or its directors or its employees or its representatives or its clients or their relatives may have position(s), make market, act as principal or engage in transactions of securities of companies referred to in this report and they may have used the research material prior to publication.

PL may from time to time solicit or perform investment banking or other services for any company mentioned in this document.

PL is registered as Research Analyst under Securities and Exchange Board of India (Research Analysts) Regulations, 2014 PL submits that no material disciplinary action has been taken on us by any Regulatory Authority impacting Equity Research Analysis activities.

PL or its research analysts or its associates or his relatives do not have any financial interest in the subject company.

PL or its research analysts or its associates or his relatives do not have actual/beneficial ownership of one per cent or more securities of the subject company at the end of the month immediately preceding the date of publication of the research report.

PL or its research analysts or its associates or his relatives do not have any material conflict of interest at the time of publication of the research report.

PL or its associates might have received compensation from the subject company in the past twelve months.

PL or its associates might have managed or co-managed public offering of securities for the subject company in the past twelve months or mandated by the subject company for any other assignment in the past twelve months.

PL or its associates might have received any compensation for investment banking or merchant banking or brokerage services from the subject company in the past twelve months.

PL or its associates might have received any compensation for products or services other than investment banking or merchant banking or brokerage services from the subject company in the past twelve months PL or its associates might have received any compensation or other benefits from the subject company or third party in connection with the research report.

PL encourages independence in research report preparation and strives to minimize conflict in preparation of research report. PL or its analysts did not receive any compensation or other benefits from the subject Company or third party in connection with the preparation of the research report. PL or its Research Analysts do not have any material conflict of interest at the time of publication of this report.

It is confirmed that Mrs.Vaishali Parekh B.com, Research Analyst of this report has not received any compensation from the companies mentioned in the report in the preceding twelve months compensation of our Research Analysts is not based on any specific merchant banking, investment banking or brokerage service transactions.

The Research analysts for this report certifies that all of the views expressed in this report accurately reflect his or her personal views about the subject company or companies and its or their securities, and no part of his or her compensation was, is or will be, directly or indirectly related to specific recommendations or views expressed in this report.

The research analysts for this report has not served as an officer, director or employee of the subject company PL or its research analysts have not engaged in market making activity for the subject company

Our sales people, traders, and other professionals or affiliates may provide oral or written market commentary or trading strategies to our clients that reflect opinions that are contrary to the opinions expressed herein, and our proprietary trading and investing businesses may make investment decisions that are inconsistent with the recommendations expressed herein. In reviewing these materials, you should be aware that any or all of the foregoing, among other things, may give rise to real or potential conflicts of interest.

PL and its associates, their directors and employees may (a) from time to time, have a long or short position in, and buy or sell the securities of the subject company or (b) be engaged in any other transaction involving such securities and earn brokerage or other compensation or act as a market maker in the financial instruments of the subject company or act as an advisor or lender/borrower to the subject company or may have any other potential conflict of interests with respect to any recommendation and other related information and opinions.