

Date: 08<sup>th</sup> Sep 2025

\* Sensex 80710.76 -07.25

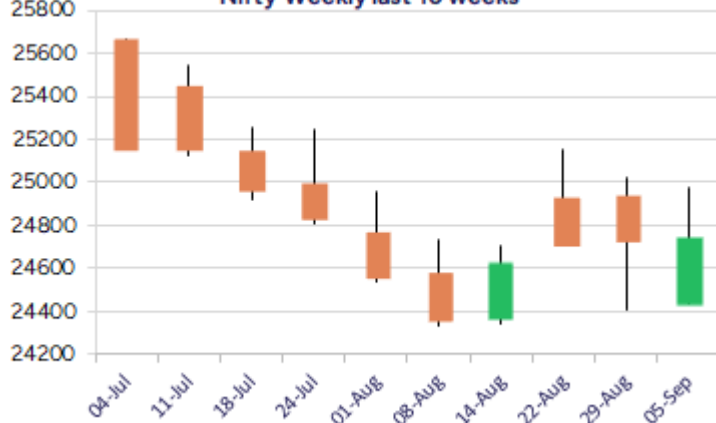
\* Nifty 24741.00 + 6.70

\* Bank Nifty 54114.55 + 39.10

Nifty daily last 10 days



Nifty Weekly last 10 weeks



\*Blue candle → Close rate > Open rate \* Red candle → Close rate < Open rate

## Market Preview

### Nifty consolidates; ends on a flat note

Nifty witnessed another day of consolidation above the 20DMA zone of 24700 with volatile movement for the session, maintaining the positive bias intact. Bank Nifty slipped to some extent with resistance witnessed near the 54300 zone, made a low of 53700, and recovered to end near the 54100 level, with the overall trend remaining positive. The market breadth was overall flat, with the advance decline indicating a neutral ratio at close.

## Market Forecast

### Nifty daily range 24600 - 24900

Nifty, with a gap-up opening session, witnessed a volatile session and breached below the important support of the 20DMA level of the 24708 zone but managed to recover in the second half to close the session near the 24750 zone, with the bias still maintained positive overall. The index would need to sustain above the 24600 zone, failing which the next crucial support would be at around the 24400 level, and on the upside, a decisive breach above the 25000 zone is necessary to trigger a fresh upward move in the coming days.

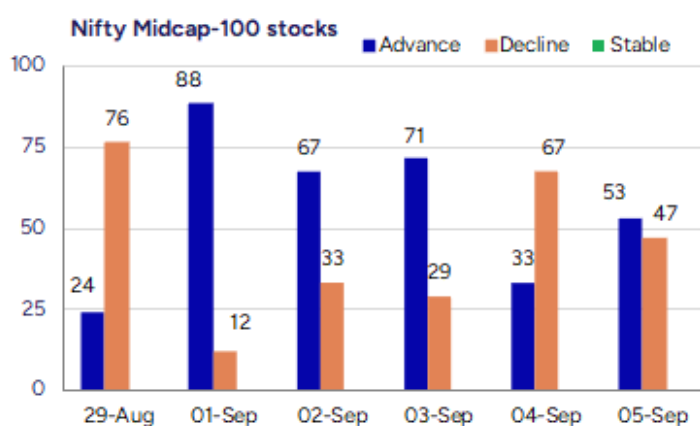
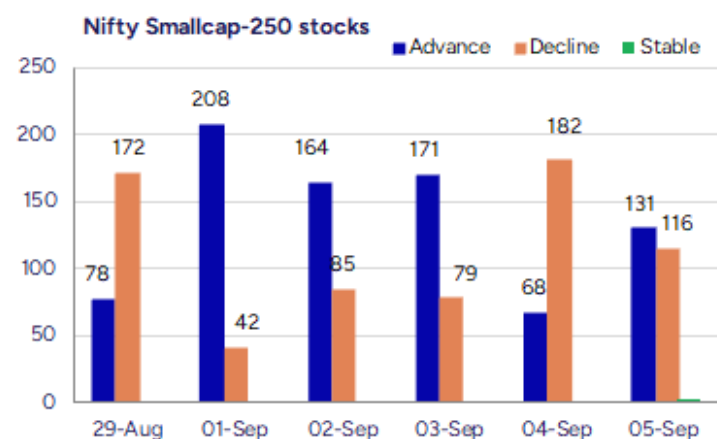
Bank Nifty continued to move within the tight range of the 53500 and 54500 zone, to close near the 54100 level with the overall trend maintained positive. As mentioned earlier, we maintain our stance on the crucial support positioned near the 53500 level, which needs to be sustained, while a decisive breach above the 54500 zone shall trigger a range breakout, and thereafter we expect a fresh further rise in the coming days.

The support for the day is seen at 24600 levels, while the resistance is seen at 25000 levels. BankNifty would have the daily range of 53500-54500 levels.

Indices	Period	Closing	% Chng	Trend	Reversal	2 Sup	1 Sup	Pivot	1 Res	2 Res
Nifty	Daily	24741.00	0.03%	3	24606.95	24521	24631	24732	24842	24942
	Weekly	24741.00	1.29%	1	24673.40	24170	24456	24718	25004	25266
	Monthly	24426.85	-1.38%	-1	24777.20	23826	24126	24639	24939	25452
Bank Nifty	Daily	54114.55	0.07%	3	53606.80	53459	53787	54047	54375	54636
	Weekly	54114.55	0.86%	-9	55165.30	53153	53634	54042	54523	54931
	Monthly	53655.65	-4.12%	-1	56293.50	51929	52792	54474	55337	57019
Sensex	Daily	80710.76	-0.01%	3	80260.05	79974	80342	80690	81058	81405
	Weekly	80710.76	1.13%	-9	80675.50	79024	79867	80662	81505	82300
	Monthly	79809.65	-1.69%	-2	81431.75	78110	78960	80593	81443	83075

**Gainers - Losers ( Nifty 500 Stocks )**

Gainers				Losers			
Company Name	Last Price	% Gain	Volume	Company Name	Last Price	% Loss	Volume
Marvel Decor Lt	95.7	20	413000	Inspire Films	20	-10.91	24000
JITF Infralogis	406.55	20	543569	Baweja Studios	49.85	-8.28	64800
Barak Vally Cem	56.42	19.99	762107	Ola Electric	59.92	-7.1	474682111
PVP Ventures	28.71	19.97	6774695	InfoBeans Tech	558	-6.58	149068
SAL Steel	22.17	19.97	276167	Ushanti Colour	40.1	-6.2	24000
MIC Electronics	65.51	16.98	57454415	Shradha Infra	60.03	-6.17	49742
Surana Telecom	24.32	16.92	2377068	FIEM Ind	2042.9	-6.1	356572



## Nifty Daily chart with RSI indicator



## BankNifty Daily chart with RSI indicator

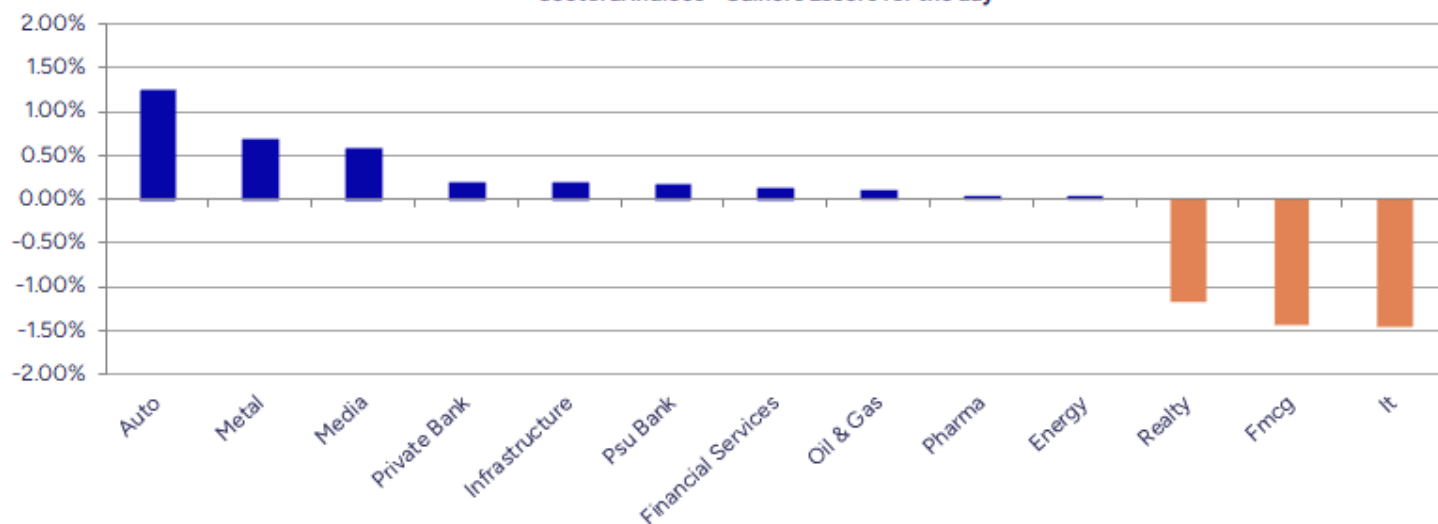


Breakouts - Cross above 200 DMA				Breakdown - Cross below 200 DMA			
Company Name	LCP	Change %	200 DMA	Company Name	LCP	Change %	200 DMA
PVP Ventures	28.71	15.44	24.87	Touchwood Enter	104.64	-2.52	107.34
SAL Steel	22.17	13.87	19.47	Firstsource Sol	349.9	-2.15	357.57
D.K. Enterprise	79.8	9.24	73.05	Allidigi Tech	940.15	-2.14	960.73
Shalby	219.45	7.27	204.58	COFORGE LTD.	1658.3	-1.89	1690.27
Swelect Energy	767.2	6.48	720.51	Divis Labs	6009	-1.77	6117.5
Forcas Studio	102.2	4.01	98.26	Sundrop Brands	839.5	-1.74	854.34
Valiant Organic	354.9	3.93	341.48	Peninsula Land	34.15	-1.53	34.68
Shah Alloys	62.56	3.54	60.42	DCB Bank	124.76	-1.32	126.43
Maheshwari Logi	61.66	3.37	59.65	Prism Johnson	146	-1.28	147.89
D P Wires	271.91	3.36	263.06	ICICI Lombard	1840.4	-1.26	1863.89
Sunteck Realty	447.7	2.96	434.81	Archidply Ind	99.49	-1.14	100.64
Ideaforge Tech	509.35	2.89	495.06	Sagility India	42.94	-1.13	43.43
FDC	470.95	2.23	460.66	Rajputana Indus	81.5	-1.06	82.37
Raghav Producti	660.55	2.21	646.27	Consol Finvest	194.85	-1.05	196.92
Fusion Finance	174.98	2.20	171.22	Bombay Super	139.05	-1.03	140.5
Country Club	18.17	2.19	17.78	Thaai Casting	111.05	-1.02	112.19
Veranda Learnin	230.34	2.01	225.81	Alembic Pharma	946.5	-0.91	955.16
Enfuse Solution	236	1.96	231.47	Indian Hume	383.25	-0.88	386.66

\* Stocks crossing above its Simple Moving Average (200DMA)

\* Stocks crossing below its Simple Moving Average (200DMA)

Sectoral Indices - Gainers Losers for the day



Stocks witnessing a volume surge as compared to their 5 day average volume

Watch out for the stocks that have seen a huge spurt in its share price over the last three days

Volume Shockers - NSE					
Company name	LCP	% Chg	Volume	Avg Vol *	% Chg
Shalby	219.45	11.84	13556461	67563	19965
Netweb	3079.4	16.11	9810191	163390	5904
Osia Hyper Reta	22.31	4.99	5893479	152898	3755
BEW Engineering	157.4	4.07	40500	1125	3500
Sunteck Realty	447.7	14.11	6384628	197199	3138
Brainbees Solu	401.1	13.88	30847221	1056728	2819
Tega Industries	2064.2	4.7	704952	24591	2767
Transworld Ship	270.94	8.45	329336	12212	2597
Karnika Industr	189.4	-5.16	248000	9360	2550
SKF India	4878.1	6.05	467709	20208	2214
Marvel Decor Lt	95.7	20	413000	19200	2051
Prism Johnson	146	-2.07	2137068	120611	1672
Cool Caps	82.25	-0.24	140000	8400	1567
Shah Alloys	62.56	7.33	350160	22587	1450
Swelect Energy	767.2	6.69	185103	12529	1377
Kross	225.91	11.09	27000964	1952627	1283
Jeena Sikho	770.3	-1.14	253842	18612	1264
D P Wires	271.91	9.41	2311073	180326	1182
ANI Integrated	93.6	4.99	15000	1440	942
PVP Ventures	28.71	19.97	6774695	658483	929

\* the Average Volume of last 5 days

Price Shockers - NSE				
Company name	LCP	Prv Close	% Chg	Volume
JITF Infralogis	406.55	267.25	52.12	543569
PVP Ventures	28.71	21.32	34.66	6774695
Moschip Tech	247.47	188.78	31.09	36970910
MIC Electronics	65.51	51.51	27.18	57454415
Surana Telecom	24.32	19.18	26.8	2377068
Atul Auto	538.75	432.9	24.45	8936748
D P Wires	271.91	218.9	24.22	2311073
Hemisphere	176.25	141.92	24.19	4484643
SAL Steel	22.17	18.02	23.03	276167
E2E Networks	2900	2403.1	20.68	201553
Marvel Decor Lt	95.7	81	18.15	413000
Barak Vally Cem	56.42	47.96	17.64	762107
Sunteck Realty	447.7	384.75	16.36	6384628
Stallion India	189.11	162.58	16.32	5242125
Pondy Oxides	1257.4	1081.7	16.24	2367978
JTEKT India	159.13	137.23	15.96	8403522
Gandhi Spl Tube	1000.55	863.15	15.92	194667
Kavveri Defence	81.73	70.61	15.75	33280
Odigma Consulta	35.29	30.49	15.74	39602
Blue Coast	62.43	53.94	15.74	78202

\* the % price rise of the last 3 days



Nifty 50 stocks - Summary Details											
Symbol	LTP	Chng	% Chng	Volume (lacs)	Turnover (crs.)	52w High	Diff with 52w H	52w Low	Diff with 52w L	365 days % chng	30 days % chng
NIFTY 50	24741.00	6.70	0.03%	2100.63	18529.34	26277.35	5.85%	21743.65	13.78%	0.34%	-1.84%
ADANIENT	2282.50	3.70	0.16%	4.43	100.65	3211.00	28.92%	2025.00	12.72%	-2.12%	-24.35%
ADANIPTS	1321.10	-7.10	-0.53%	11.36	150.31	1494.00	11.57%	995.65	32.69%	-2.20%	-9.78%
APOLLOHOSP	7830.00	-70.00	-0.89%	2.28	179.39	7980.00	1.88%	6001.00	30.48%	8.61%	13.98%
ASIANPAINT	2581.90	13.30	0.52%	11.53	297.72	3394.90	23.95%	2124.75	21.52%	5.41%	-20.52%
AXISBANK	1056.00	5.60	0.53%	28.50	300.16	1281.65	17.61%	933.50	13.12%	-1.91%	-10.81%
BAJAJ-AUTO	9075.00	4.00	0.04%	2.31	210.38	12774.00	28.96%	7089.35	28.01%	10.21%	-17.26%
BAJAJFINSV	2015.00	12.80	0.64%	10.77	216.80	2135.00	5.62%	1551.65	29.86%	3.24%	6.96%
BAJFINANCE	936.95	2.20	0.24%	54.67	512.16	978.80	4.28%	645.10	45.24%	4.80%	-87.19%
BEL	371.70	-0.80	-0.21%	73.26	272.02	436.00	14.75%	240.25	54.71%	-3.66%	24.60%
BHARTIARTL	1894.00	13.60	0.72%	26.20	496.08	2045.80	7.42%	1511.00	25.35%	-2.66%	20.39%
CIPLA	1551.10	-26.70	-1.69%	7.02	109.60	1702.05	8.87%	1335.00	16.19%	5.20%	-4.49%
COALINDIA	393.10	1.65	0.42%	45.35	177.41	517.85	24.09%	349.25	12.56%	3.15%	-22.28%
DRREDDY	1269.70	16.70	1.33%	7.70	97.38	1405.90	9.69%	1020.00	24.48%	3.14%	-81.54%
EICHERMOT	6580.00	155.00	2.41%	6.11	400.06	6713.00	1.98%	4508.75	45.94%	13.10%	32.93%
GRASIM	2807.90	-1.90	-0.07%	4.95	138.99	2898.40	3.12%	2276.95	23.32%	0.45%	1.89%
HCLTECH	1420.10	-23.20	-1.61%	38.95	554.36	2012.20	29.43%	1302.75	9.01%	-2.66%	-19.15%
HDFCBANK	962.60	1.35	0.14%	116.02	1114.56	1018.85	5.52%	806.50	19.36%	-51.39%	-41.45%
HDFCLIFE	760.05	5.80	0.77%	32.35	245.92	820.75	7.40%	584.30	30.08%	2.13%	-0.60%
HEROMOTOCO	5370.00	19.00	0.36%	5.17	277.76	6246.25	14.03%	3344.00	60.59%	17.69%	-5.85%
HINDALCO	745.00	5.95	0.81%	27.78	206.40	772.65	3.58%	546.45	36.33%	7.56%	10.84%
HINDUNILVR	2628.00	-38.60	-1.45%	9.45	249.72	3035.00	13.41%	2136.00	23.03%	5.20%	-6.15%
ICICIBANK	1402.30	-3.20	-0.23%	66.21	925.32	1500.00	6.51%	1186.00	18.24%	-2.69%	13.68%
INDUSINDBK	758.25	3.40	0.45%	28.74	217.05	1498.00	49.38%	606.00	25.12%	-7.85%	-47.38%
INFY	1446.00	-17.00	-1.16%	54.66	790.04	2006.45	27.93%	1307.00	10.64%	0.18%	-23.90%
ITC	407.90	-8.00	-1.92%	160.00	650.90	528.50	22.82%	390.15	4.55%	0.42%	-17.86%
JIOFIN	310.00	0.55	0.18%	86.18	267.64	363.00	14.60%	198.65	56.05%	-7.03%	-10.87%
JSWSTEEL	1074.90	2.50	0.23%	7.49	80.15	1089.20	1.31%	880.00	22.15%	1.80%	14.93%
KOTAKBANK	1939.50	-10.20	-0.52%	19.81	385.67	2301.90	15.74%	1679.05	15.51%	-2.66%	9.30%
LT	3553.70	-38.90	-1.08%	8.31	296.24	3963.50	10.34%	2965.30	19.84%	-1.64%	-1.59%
M&M	3562.90	81.40	2.34%	37.01	1315.41	3577.80	0.42%	2425.00	46.92%	8.38%	26.62%
MARUTI	14903.00	241.00	1.64%	4.74	702.58	15240.00	2.21%	10725.00	38.96%	16.95%	18.85%
NESTLEIND	1206.90	-5.70	-0.47%	14.34	172.59	1389.00	13.11%	1055.00	14.40%	-46.52%	-52.16%
NTPC	328.75	-1.30	-0.39%	56.78	186.36	448.45	26.69%	292.80	12.28%	-1.06%	-18.53%
ONGC	234.60	-1.12	-0.48%	72.10	168.89	316.95	25.98%	205.00	14.44%	0.53%	-25.03%
POWERGRID	285.50	3.70	1.31%	96.95	276.12	366.25	22.05%	247.30	15.45%	-1.47%	-15.35%
RELIANCE	1375.70	16.40	1.21%	57.77	791.66	1551.00	11.30%	1114.85	23.40%	-2.33%	-55.13%
SBILIFE	1806.00	14.90	0.83%	7.57	136.96	1932.85	6.56%	1372.55	31.58%	-3.55%	-6.33%
SBIN	806.95	-2.45	-0.30%	51.95	419.37	875.45	7.82%	680.00	18.67%	1.10%	-0.87%
SHRIRAMFIN	595.65	9.85	1.68%	41.67	246.61	730.45	18.45%	493.35	20.74%	-7.03%	-81.94%
SUNPHARMA	1592.90	10.60	0.67%	18.14	288.17	1960.35	18.74%	1553.05	2.57%	-3.05%	-13.67%
TATACONSUM	1075.00	3.90	0.36%	11.30	121.08	1234.30	12.91%	882.90	21.76%	0.61%	-10.36%
TATAMOTORS	693.50	6.00	0.87%	66.92	462.29	1085.85	36.13%	535.75	29.44%	5.03%	-36.37%
TATASTEEL	167.80	0.99	0.59%	167.95	280.53	170.18	1.40%	122.62	36.85%	4.50%	10.34%
TCS	3048.00	-47.70	-1.54%	28.02	855.21	4549.35	33.00%	2991.60	1.89%	1.04%	-30.89%
TECHM	1478.00	-22.40	-1.49%	18.76	278.32	1807.70	18.24%	1209.40	22.21%	1.01%	-8.81%
TITAN	3660.00	-31.10	-0.84%	4.54	166.92	3867.00	5.35%	2925.00	25.13%	7.98%	2.31%
TRENT	5515.50	-13.50	-0.24%	6.23	344.76	8345.00	33.91%	4488.00	22.89%	3.98%	-22.56%
ULTRACEMCO	12592.00	-59.00	-0.47%	1.54	193.72	13097.00	3.86%	10047.85	25.32%	2.87%	9.24%
WIPRO	244.36	-0.61	-0.25%	62.34	152.18	324.60	24.72%	228.00	7.18%	-0.38%	-52.81%
ETERNAL	329.50	3.25	1.00%	316.45	1048.77	334.40	1.47%	194.80	69.15%	7.98%	#VALUE!

## Disclaimer / Disclosures

### ANALYST CERTIFICATION

I, Mrs. Vaishali Parekh B.com, Research Analyst, author and the name subscribed to this report, hereby certify that all of the views expressed in this research report accurately reflect our views about the subject issuer(s) or securities. We also certify that no part of our compensation was, is, or will be directly or indirectly related to the specific recommendation(s) or view(s) in this report.

Terms & conditions and other disclosures:

Prabhudas Lilladher Pvt. Ltd, Mumbai, India (hereinafter referred to as "PL") is engaged in the business of Stock Broking, Portfolio Manager, Depository Participant and distribution for third party financial products. PL is a subsidiary of Prabhudas Lilladher Advisory Services Pvt Ltd. which has its various subsidiaries engaged in business of commodity broking, investment banking, financial services (margin funding) and distribution of third party financial/other products, details in respect of which are available at [www.plindia.com](http://www.plindia.com)

This document has been prepared by the Research Division of PL and is meant for use by the recipient only as information and is not for circulation. This document is not to be reported or copied or made available to others without prior permission of PL. It should not be considered or taken as an offer to sell or a solicitation to buy or sell any security.

The information contained in this report has been obtained from sources that are considered to be reliable. However, PL has not independently verified the accuracy or completeness of the same. Neither PL nor any of its affiliates, its directors or its employees accepts any responsibility of whatsoever nature for the information, statements and opinion given, made available or expressed herein or for any omission therein.

Recipients of this report should be aware that past performance is not necessarily a guide to future performance and value of investments can go down as well. The suitability or otherwise of any investments will depend upon the recipient's particular circumstances and, in case of doubt, advice should be sought from an independent expert/advisor.

Either PL or its affiliates or its directors or its employees or its representatives or its clients or their relatives may have position(s), make market, act as principal or engage in transactions of securities of companies referred to in this report and they may have used the research material prior to publication.

PL may from time to time solicit or perform investment banking or other services for any company mentioned in this document.

PL is registered as Research Analyst under Securities and Exchange Board of India (Research Analysts) Regulations, 2014 PL submits that no material disciplinary action has been taken on us by any Regulatory Authority impacting Equity Research Analysis activities.

PL or its research analysts or its associates or his relatives do not have any financial interest in the subject company.

PL or its research analysts or its associates or his relatives do not have actual/beneficial ownership of one per cent or more securities of the subject company at the end of the month immediately preceding the date of publication of the research report.

PL or its research analysts or its associates or his relatives do not have any material conflict of interest at the time of publication of the research report.

PL or its associates might have received compensation from the subject company in the past twelve months.

PL or its associates might have managed or co-managed public offering of securities for the subject company in the past twelve months or mandated by the subject company for any other assignment in the past twelve months.

PL or its associates might have received any compensation for investment banking or merchant banking or brokerage services from the subject company in the past twelve months.

PL or its associates might have received any compensation for products or services other than investment banking or merchant banking or brokerage services from the subject company in the past twelve months PL or its associates might have received any compensation or other benefits from the subject company or third party in connection with the research report.

PL encourages independence in research report preparation and strives to minimize conflict in preparation of research report. PL or its analysts did not receive any compensation or other benefits from the subject Company or third party in connection with the preparation of the research report. PL or its Research Analysts do not have any material conflict of interest at the time of publication of this report.

It is confirmed that Mrs.Vaishali Parekh B.com, Research Analyst of this report has not received any compensation from the companies mentioned in the report in the preceding twelve months compensation of our Research Analysts is not based on any specific merchant banking, investment banking or brokerage service transactions.

The Research analysts for this report certifies that all of the views expressed in this report accurately reflect his or her personal views about the subject company or companies and its or their securities, and no part of his or her compensation was, is or will be, directly or indirectly related to specific recommendations or views expressed in this report.

The research analysts for this report has not served as an officer, director or employee of the subject company PL or its research analysts have not engaged in market making activity for the subject company

Our sales people, traders, and other professionals or affiliates may provide oral or written market commentary or trading strategies to our clients that reflect opinions that are contrary to the opinions expressed herein, and our proprietary trading and investing businesses may make investment decisions that are inconsistent with the recommendations expressed herein. In reviewing these materials, you should be aware that any or all of the foregoing, among other things, may give rise to real or potential conflicts of interest.

PL and its associates, their directors and employees may (a) from time to time, have a long or short position in, and buy or sell the securities of the subject company or (b) be engaged in any other transaction involving such securities and earn brokerage or other compensation or act as a market maker in the financial instruments of the subject company or act as an advisor or lender/borrower to the subject company or may have any other potential conflict of interests with respect to any recommendation and other related information and opinions.