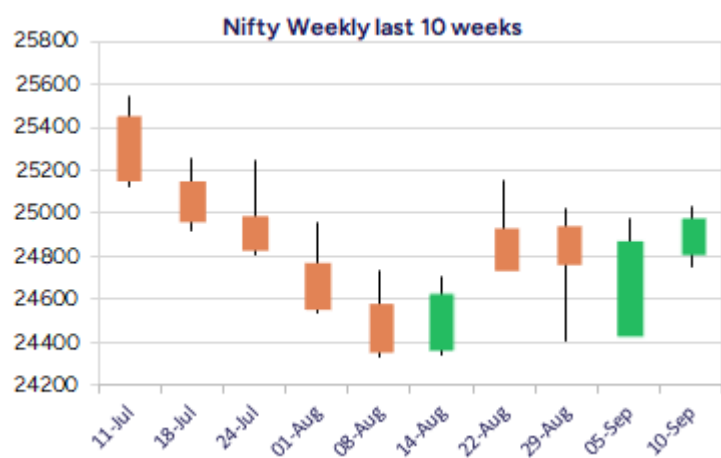
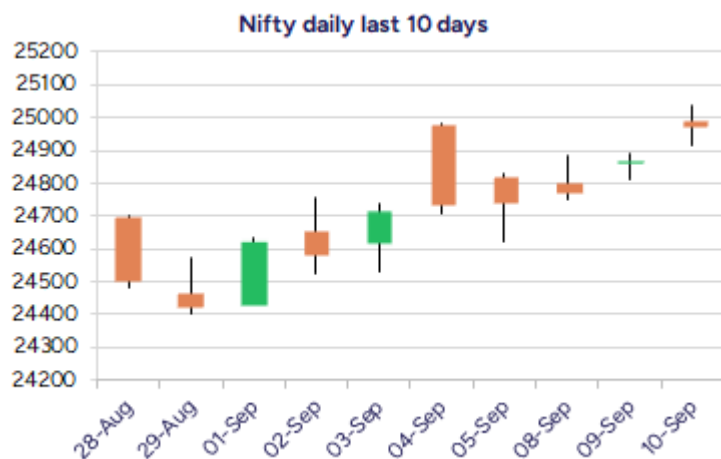


Date: 11th Sep 2025

* Sensex 81425.15 + 323.83

* Nifty 24973.10 + 104.50

* Bank Nifty 54536.00 + 319.90



*Blue candle → Close rate > Open rate * Red candle → Close rate < Open rate

Market Preview

Nifty touching 25000 zone; bias improving

Nifty has touched the 25000 zone during the intraday session with indications of sentiment easing out with anticipation of positive cues from the global end and expecting market to gain further in the coming days. BankNifty has shown some improvement moving above the 54500 level with bias improving to some extent. The market breadth improved slightly with the advance decline indicating a positive ratio of 3:2 at close.

Market Forecast

Nifty daily range 24800 - 25250

Nifty, slowly and steadily has headed towards the 25000 zone with bias and sentiment getting better with the global cues easing out and anticipating for further positive developments in the coming days. The index once confirmed a decisive close above the important and crucial zone of 25000 level shall establish conviction and thereafter, can expect for further rise having targets of 25300 and 25700 level with 24500 maintained as the important support zone.

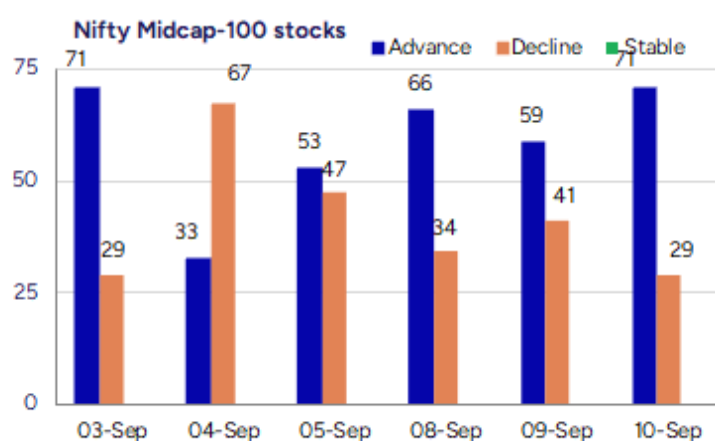
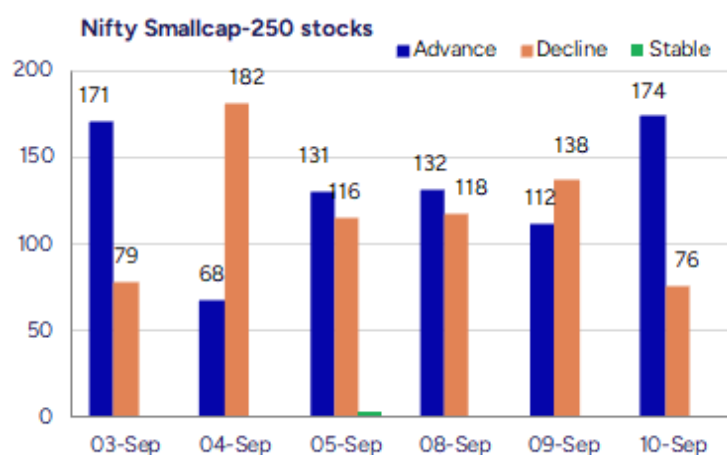
BankNifty, witnessed some positive gains moving ahead above the resistance zone at 54500 level to expect for some improvement in the coming sessions and as we have been mentioning, would need a decisive move past the 50EMA at 55200 zone to overall improve the bias and thereafter, establishing conviction anticipating for fresh upward move in the coming days with 53600 level maintained as the important support zone which needs to be sustained.

The support for the day is seen at 24800 levels, while the resistance is seen at 25250 levels. BankNifty would have the daily range of 54000-55200 levels.

Indices	Period	Closing	% Chng	Trend	Reversal	2 Sup	1 Sup	Pivot	1 Res	2 Res
Nifty	Daily	24973.10	0.42%	6	24792.15	24854	24914	24975	25034	25095
	Weekly	24741.00	1.29%	1	24673.40	24170	24456	24718	25004	25266
	Monthly	24426.85	-1.38%	-1	24777.20	23826	24126	24639	24939	25452
Bank Nifty	Daily	54536.00	0.59%	6	53934.05	54242	54389	54547	54694	54852
	Weekly	54114.55	0.86%	-9	55165.30	53153	53634	54042	54523	54931
	Monthly	53655.65	-4.12%	-1	56293.50	51929	52792	54474	55337	57019
Sensex	Daily	81425.15	0.40%	6	80804.65	81026	81226	81435	81634	81843
	Weekly	80710.76	1.13%	-9	80675.50	79024	79867	80662	81505	82300
	Monthly	79809.65	-1.69%	-2	81431.75	78110	78960	80593	81443	83075

Gainers - Losers (Nifty 500 Stocks)

Gainers				Losers			
Company Name	Last Price	% Gain	Volume	Company Name	Last Price	% Loss	Volume
Indo Count	284.73	20	4242831	Renol Polychem	71.4	-10.47	111600
Atlantaa	43.64	19.99	4570637	Precision Camsh	229.43	-10	6343457
Greenchef Appli	72.4	18.4	76800	CarTrade Tech	2467.5	-9.86	2811045
Apex Frozen	257.88	17.5	7849668	Studio LSD	21.1	-9.83	218000
Mamata Machiner	478.65	15.99	16055088	Good Luck	1150	-9.1	1283758
Crown Lifters	183.19	14.56	323507	Newjaisa Techno	44.1	-8.51	61500
Tolins Tyres	175.89	14.23	3632172	JM Financial	175.64	-7.91	10105379



Nifty Daily chart with RSI indicator



BankNifty Daily chart with RSI indicator



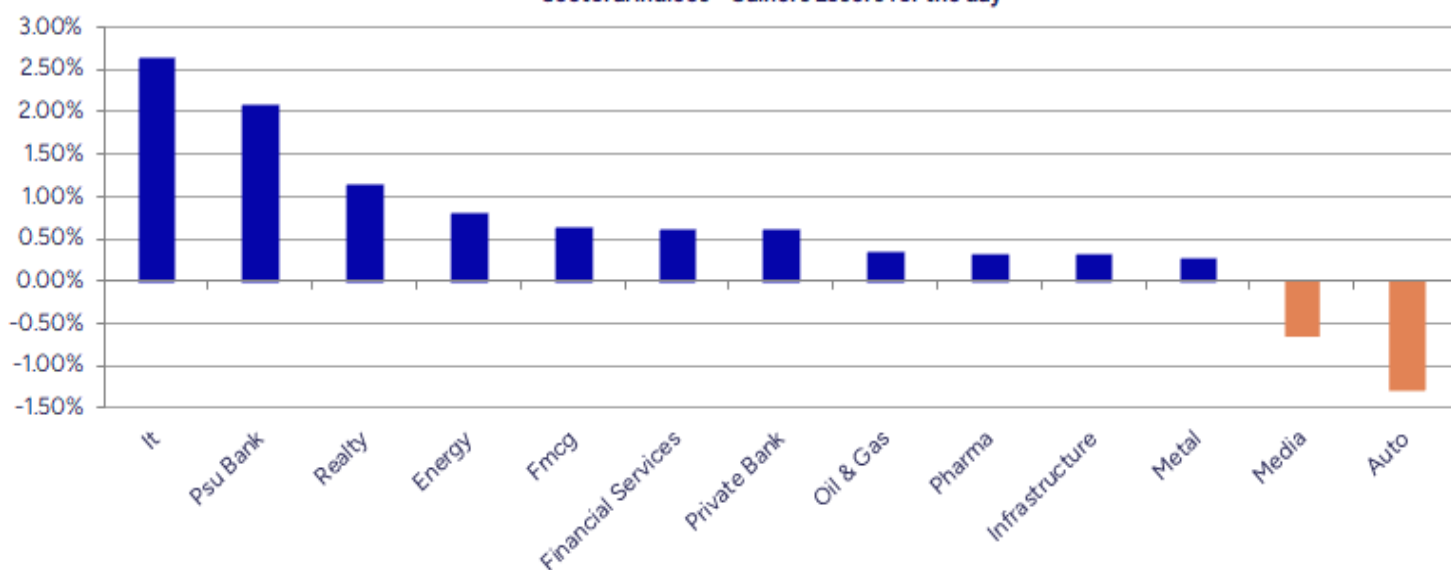
Breakouts - Cross above 200 DMA			
Company Name	LCP	Change %	200 DMA
Atlanta	43.64	14.33	38.17
Tolins Tyres	175.89	12.14	156.85
Apex Frozen	258.35	11.42	231.87
Greenchef	72.4	7.43	67.39
Elecon Eng	600.55	5.81	567.55
Maheshwari Logi	63	5.63	59.64
Dilip Buildcon	489.7	5.54	463.99
Zensar Tech	822.85	5.13	782.7
Williamson Mago	34.96	4.83	33.35
Mega Flex	56.5	4.63	54
Cyber Media	19.76	4.55	18.9
Brightcom Group	15.72	4.24	15.08
Pearl Global In	1397	4.17	1341.13
Saakshi Medtech	181.35	3.93	174.5
Kellton Tech	27.3	3.88	26.28
Union Bank	132.68	3.88	127.73
Vertexplus	126.35	3.68	121.86
McLeod	38.41	3.59	37.08

* Stocks crossing above its Simple Moving Average (200DMA)

Breakdown - Cross below 200 DMA			
Company Name	LCP	Change %	200 DMA
Sadhav Shipping	113	-2.46	115.85
Eldeco Housing	775	-2.15	792
Softtech Engine	381.1	-1.95	388.68
Kansai Nerolac	244.34	-1.67	248.49
WOL 3D India	134	-1.63	136.22
Akash Infraproj	28.8	-1.44	29.22
BARTRONICS IND	15.89	-1.24	16.09
Voltas	1398.4	-0.93	1411.47
Astec Life	853.45	-0.81	860.45
Sree Rayalaseem	616.6	-0.76	621.33
Usha Financial	45.2	-0.59	45.47
Rane Holdings	1499.5	-0.51	1507.19
Delta	86.1	-0.44	86.48
Rajputana Indus	82	-0.36	82.3
Campus	270.8	-0.31	271.64
Reliance Power	46.44	-0.28	46.57
Uttam Sugar	263.2	-0.22	263.79
KEC Intl	869.95	-0.21	871.75

* Stocks crossing below its Simple Moving Average (200DMA)

Sectoral Indices - Gainers Losers for the day



Stocks witnessing a volume surge as compared to their 5 day average volume

Watch out for the stocks that have seen a huge spurt in its share price over the last three days

Volume Shockers - NSE					
Company name	LCP	% Chg	Volume	Avg Vol *	% Chg
Apex Frozen	258	17.56	7851880	26091	29994
Sasta Sundar	289	7.16	1023678	4755	21428
Mamata Machiner	476.7	15.52	16089170	171910	9259
Avanti Feeds	743.8	12.89	19188845	294448	6417
Magnum Ventures	28.5	13.05	2280880	43002	5204
Atlanta	43.64	19.99	4575766	86391	5197
BEW Engineering	152.7	-1.17	40500	1125	3500
Madhav Marbles	47.96	6.34	308445	9222	3245
Welspun India	124.05	8.58	40196618	1440260	2691
Elecon Eng	601.4	7.41	5489426	199325	2654
Sula Vineyards	285.98	2.96	5277572	198913	2553
Tolins Tyres	174.8	13.52	3657002	138446	2541
Dilip Buildcon	490	6.65	2127342	81531	2509
Sapphire Foods	331.45	3.32	1767796	68650	2475
Williamson Mago	34.96	7.4	109222	4729	2210
Indo Count	284.73	20	4245004	189994	2134
Sigma Solve	474.7	7.07	189560	9030	1999
Libas Consumer	12.9	8.4	429258	23706	1711
Chembond Chem	199.03	8.35	267743	15083	1675
Crown Lifters	184.96	15.67	324890	18340	1672

* the Average Volume of last 5 days

Price Shockers - NSE				
Company name	LCP	Prv Close	% Chg	Volume
SAL Steel	30	22.17	35.32	3043895
Lasa Supergener	11.7	8.88	31.76	1106357
Atlantaa	43.64	33.28	31.13	4575766
Indian Emulsifi	180	139.8	28.76	135000
Precision Camsh	229.43	183.02	25.36	6350047
Shah Alloys	76.55	62.56	22.36	321657
Cyber Media	19.76	16.3	21.23	107817
Indo Count	284.73	235.06	21.13	4245004
Prime Focus	191.38	158.37	20.84	11296239
Century Extr	26.13	21.77	20.03	1404834
India Tourism D	650	549.15	18.36	3965465
Owais Metal	510.2	431.7	18.18	36400
Apex Frozen	258	218.32	18.18	7851880
Mamata Machiner	476.7	403.95	18.01	16089170
Sundaram	571.5	485.55	17.7	1169572
Crown Lifters	184.96	157.37	17.53	324890
Chemcon Special	244.62	208.33	17.42	385733
IOL Chemicals	113.28	96.91	16.89	10576816
Pearl Global In	1399.9	1203.9	16.28	601946
Magnum Ventures	28.5	24.6	15.85	2280880

* the % price rise of the last 3 days

Nifty 50 stocks - Summary Details											
Symbol	LTP	Chng	% Chng	Volume (lacs)	Turnover (crs.)	52w High	Diff with 52w H	52w Low	Diff with 52w L	365 days % chng	30 days % chng
NIFTY 50	24973.10	104.50	0.42%	2441.03	22456.74	26277.35	4.96%	21743.65	14.85%	2.07%	-0.27%
ADANIENT	2340.80	29.20	1.26%	3.90	91.28	3211.00	27.10%	2025.00	15.60%	6.13%	-22.01%
ADANIPTS	1389.00	8.10	0.59%	25.53	355.66	1494.00	7.03%	995.65	39.51%	4.22%	-3.83%
APOLLOHOSP	7939.00	113.50	1.45%	3.37	266.04	7980.00	0.51%	6001.00	32.29%	10.46%	14.06%
ASIANPAINT	2541.00	3.70	0.15%	5.21	132.12	3394.90	25.15%	2124.75	19.59%	2.49%	-22.66%
AXISBANK	1073.00	20.80	1.98%	52.41	559.62	1281.65	16.28%	933.50	14.94%	-0.56%	-10.13%
BAJAJ-AUTO	9232.50	-150.50	-1.60%	4.54	422.40	12774.00	27.72%	7089.35	30.23%	14.09%	-13.50%
BAJAJFINSV	2038.00	12.70	0.63%	9.28	188.99	2135.00	4.54%	1551.65	31.34%	5.53%	8.86%
BAJFINANCE	967.50	19.10	2.01%	68.35	658.19	978.80	1.15%	645.10	49.98%	8.12%	-87.09%
BEL	389.00	17.05	4.58%	231.67	888.64	436.00	10.78%	240.25	61.91%	-3.29%	32.11%
BHARTIARTL	1893.90	0.20	0.01%	35.66	674.77	2045.80	7.42%	1511.00	25.34%	1.89%	22.76%
CIPLA	1560.40	8.80	0.57%	7.18	112.19	1702.05	8.32%	1335.00	16.88%	4.43%	-4.23%
COALINDIA	391.70	3.75	0.97%	42.82	167.52	517.85	24.36%	349.25	12.15%	2.17%	-19.92%
DRREDDY	1302.50	11.20	0.87%	12.32	160.54	1405.90	7.35%	1020.00	27.70%	6.60%	-80.60%
EICHERMOT	6818.50	-56.00	-0.81%	7.41	506.77	6937.00	1.71%	4508.75	51.23%	21.39%	44.81%
GRASIM	2783.80	-12.10	-0.43%	4.22	117.84	2898.40	3.95%	2276.95	22.26%	3.88%	3.16%
HCLTECH	1464.20	37.10	2.60%	32.05	468.82	2012.20	27.23%	1302.75	12.39%	-3.29%	-18.30%
HDFCBANK	965.50	0.35	0.04%	180.91	1747.95	1018.85	5.24%	806.50	19.71%	-51.10%	-41.38%
HDFCLIFE	777.90	16.80	2.21%	23.01	178.00	820.75	5.22%	584.30	33.13%	-0.06%	3.44%
HEROMOTOCO	5345.00	-78.50	-1.45%	5.37	287.68	6246.25	14.43%	3344.00	59.84%	17.91%	-5.60%
HINDALCO	742.55	-0.35	-0.05%	33.51	249.66	772.65	3.90%	546.45	35.89%	10.43%	12.81%
HINDUNILVR	2646.00	4.00	0.15%	10.31	272.12	3035.00	12.82%	2136.00	23.88%	5.74%	-9.58%
ICICIBANK	1403.30	-0.40	-0.03%	74.52	1048.67	1500.00	6.45%	1186.00	18.32%	-2.24%	13.66%
INDUSINDBK	752.30	6.15	0.82%	13.50	101.41	1498.00	49.78%	606.00	24.14%	-4.64%	-47.75%
INFY	1532.00	27.70	1.84%	72.81	1112.87	2006.45	23.65%	1307.00	17.21%	5.71%	-20.60%
ITC	413.00	2.95	0.72%	92.51	380.45	528.50	21.85%	390.15	5.86%	-1.07%	-19.87%
JIOFIN	310.35	2.40	0.78%	108.38	337.41	363.00	14.50%	198.65	56.23%	-4.11%	-9.88%
JSWSTEEL	1103.50	-1.00	-0.09%	13.06	144.25	1115.50	1.08%	880.00	25.40%	5.27%	18.22%
KOTAKBANK	1972.90	12.50	0.64%	85.21	1684.38	2301.90	14.29%	1679.05	17.50%	0.39%	9.51%
LT	3556.00	31.00	0.88%	11.37	403.88	3963.50	10.28%	2965.30	19.92%	-2.29%	-1.49%
M&M	3609.00	-87.30	-2.36%	22.98	832.87	3723.80	3.08%	2425.00	48.82%	17.56%	36.45%
MARUTI	15134.00	-231.00	-1.50%	4.89	742.85	15384.00	1.63%	10725.00	41.11%	22.04%	26.51%
NESTLEIND	1217.00	14.80	1.23%	10.16	123.14	1389.00	12.38%	1055.00	15.36%	9.64%	-52.23%
NTPC	325.75	1.65	0.51%	65.09	212.41	448.45	27.36%	292.80	11.25%	-3.18%	-16.87%
ONGC	231.68	0.35	0.15%	117.75	273.06	308.70	24.95%	205.00	13.01%	-0.90%	-22.61%
POWERGRID	283.10	-0.75	-0.26%	77.67	220.84	366.25	22.70%	247.30	14.48%	-0.35%	-13.61%
RELIANCE	1377.50	1.30	0.09%	77.90	1075.09	1551.00	11.19%	1114.85	23.56%	0.61%	-52.95%
SBILIFE	1830.00	24.30	1.35%	8.81	161.43	1932.85	5.32%	1372.55	33.33%	-1.52%	-5.05%
SBIN	818.45	9.60	1.19%	72.86	596.43	875.45	6.51%	680.00	20.36%	0.57%	3.14%
SHRIRAMFIN	605.70	10.70	1.80%	47.08	284.17	730.45	17.08%	493.35	22.77%	-2.40%	-82.06%
SUNPHARMA	1594.60	2.90	0.18%	24.08	383.49	1960.35	18.66%	1553.05	2.68%	0.30%	-12.63%
TATACONSUM	1099.00	15.50	1.43%	12.00	131.12	1234.30	10.96%	882.90	24.48%	3.09%	-9.11%
TATAMOTORS	710.20	-5.35	-0.75%	103.62	737.89	1049.95	32.36%	535.75	32.56%	12.92%	-31.11%
TATASTEEL	169.35	0.20	0.12%	131.27	222.69	172.50	1.83%	122.62	38.11%	7.09%	13.17%
TCS	3110.00	60.60	1.99%	20.79	645.56	4549.35	31.64%	2991.60	3.96%	0.43%	-31.47%
TECHM	1526.70	28.50	1.90%	16.61	253.38	1807.70	15.54%	1209.40	26.24%	1.20%	-5.13%
TITAN	3619.80	-10.30	-0.28%	4.09	147.96	3867.00	6.39%	2925.00	23.75%	4.91%	-1.48%
TRENT	5210.00	-8.50	-0.16%	8.99	467.70	8345.00	37.57%	4488.00	16.09%	-1.85%	-26.88%
ULTRACEMCO	12475.00	-97.00	-0.77%	1.76	219.56	13097.00	4.75%	10047.85	24.16%	3.41%	9.38%
WIPRO	255.71	6.56	2.63%	152.61	389.77	324.60	21.22%	228.00	12.15%	4.23%	-51.61%
ETERNAL	324.70	-1.00	-0.31%	189.61	615.22	334.40	2.90%	194.80	66.68%	8.24%	#VALUE!

Disclaimer / Disclosures

ANALYST CERTIFICATION

I, Mrs. Vaishali Parekh B.com, Research Analyst, author and the name subscribed to this report, hereby certify that all of the views expressed in this research report accurately reflect our views about the subject issuer(s) or securities. We also certify that no part of our compensation was, is, or will be directly or indirectly related to the specific recommendation(s) or view(s) in this report.

Terms & conditions and other disclosures:

Prabhudas Lilladher Pvt. Ltd, Mumbai, India (hereinafter referred to as "PL") is engaged in the business of Stock Broking, Portfolio Manager, Depository Participant and distribution for third party financial products. PL is a subsidiary of Prabhudas Lilladher Advisory Services Pvt Ltd. which has its various subsidiaries engaged in business of commodity broking, investment banking, financial services (margin funding) and distribution of third party financial/other products, details in respect of which are available at www.plindia.com

This document has been prepared by the Research Division of PL and is meant for use by the recipient only as information and is not for circulation. This document is not to be reported or copied or made available to others without prior permission of PL. It should not be considered or taken as an offer to sell or a solicitation to buy or sell any security.

The information contained in this report has been obtained from sources that are considered to be reliable. However, PL has not independently verified the accuracy or completeness of the same. Neither PL nor any of its affiliates, its directors or its employees accepts any responsibility of whatsoever nature for the information, statements and opinion given, made available or expressed herein or for any omission therein.

Recipients of this report should be aware that past performance is not necessarily a guide to future performance and value of investments can go down as well. The suitability or otherwise of any investments will depend upon the recipient's particular circumstances and, in case of doubt, advice should be sought from an independent expert/advisor.

Either PL or its affiliates or its directors or its employees or its representatives or its clients or their relatives may have position(s), make market, act as principal or engage in transactions of securities of companies referred to in this report and they may have used the research material prior to publication.

PL may from time to time solicit or perform investment banking or other services for any company mentioned in this document.

PL is registered as Research Analyst under Securities and Exchange Board of India (Research Analysts) Regulations, 2014 PL submits that no material disciplinary action has been taken on us by any Regulatory Authority impacting Equity Research Analysis activities.

PL or its research analysts or its associates or his relatives do not have any financial interest in the subject company.

PL or its research analysts or its associates or his relatives do not have actual/beneficial ownership of one per cent or more securities of the subject company at the end of the month immediately preceding the date of publication of the research report.

PL or its research analysts or its associates or his relatives do not have any material conflict of interest at the time of publication of the research report.

PL or its associates might have received compensation from the subject company in the past twelve months.

PL or its associates might have managed or co-managed public offering of securities for the subject company in the past twelve months or mandated by the subject company for any other assignment in the past twelve months.

PL or its associates might have received any compensation for investment banking or merchant banking or brokerage services from the subject company in the past twelve months.

PL or its associates might have received any compensation for products or services other than investment banking or merchant banking or brokerage services from the subject company in the past twelve months PL or its associates might have received any compensation or other benefits from the subject company or third party in connection with the research report.

PL encourages independence in research report preparation and strives to minimize conflict in preparation of research report. PL or its analysts did not receive any compensation or other benefits from the subject Company or third party in connection with the preparation of the research report. PL or its Research Analysts do not have any material conflict of interest at the time of publication of this report.

It is confirmed that Mrs.Vaishali Parekh B.com, Research Analyst of this report has not received any compensation from the companies mentioned in the report in the preceding twelve months compensation of our Research Analysts is not based on any specific merchant banking, investment banking or brokerage service transactions.

The Research analysts for this report certifies that all of the views expressed in this report accurately reflect his or her personal views about the subject company or companies and its or their securities, and no part of his or her compensation was, is or will be, directly or indirectly related to specific recommendations or views expressed in this report.

The research analysts for this report has not served as an officer, director or employee of the subject company PL or its research analysts have not engaged in market making activity for the subject company

Our sales people, traders, and other professionals or affiliates may provide oral or written market commentary or trading strategies to our clients that reflect opinions that are contrary to the opinions expressed herein, and our proprietary trading and investing businesses may make investment decisions that are inconsistent with the recommendations expressed herein. In reviewing these materials, you should be aware that any or all of the foregoing, among other things, may give rise to real or potential conflicts of interest.

PL and its associates, their directors and employees may (a) from time to time, have a long or short position in, and buy or sell the securities of the subject company or (b) be engaged in any other transaction involving such securities and earn brokerage or other compensation or act as a market maker in the financial instruments of the subject company or act as an advisor or lender/borrower to the subject company or may have any other potential conflict of interests with respect to any recommendation and other related information and opinions.