

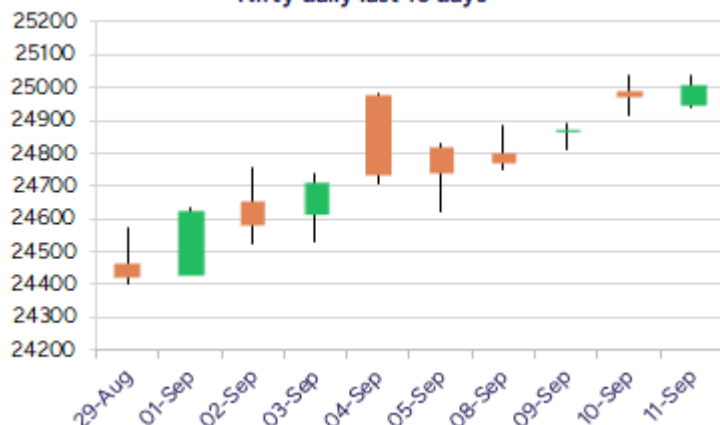
Date: 12th Sep 2025

* Sensex 81548.73 + 123.58

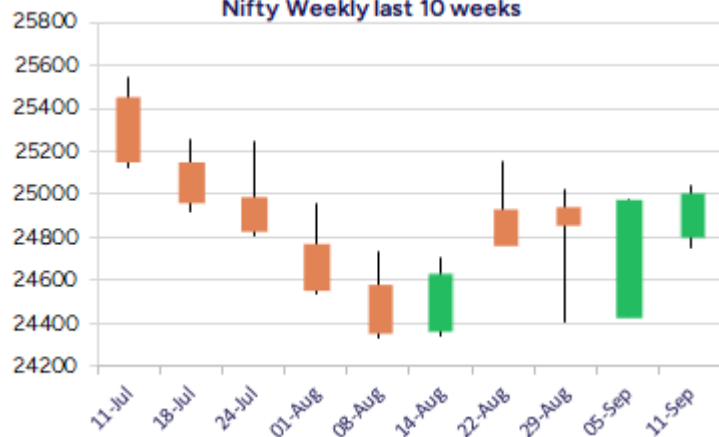
* Nifty 25005.50 + 32.40

* Bank Nifty 54669.60 + 133.60

Nifty daily last 10 days



Nifty Weekly last 10 weeks



*Blue candle → Close rate > Open rate * Red candle → Close rate < Open rate

Market Preview

Nifty manages to end above the 25000 zone.

Nifty, after the positive opening session, remained rangebound and ended above the 25000 zone to maintain an optimistic approach, anticipating further upward movement. BankNifty looks technically well poised for further rise in the coming days, with major frontline banking stocks looking good. The market breadth was overall flat, with the advance decline indicating a neutral ratio at close.

Market Forecast

Nifty daily range 24850 - 25200

Nifty witnessed consolidation in the 24900–25000 zone & managed to close above the 25000 level after forming a higher bottom formation on the daily chart. With the bias overall remaining intact, one can expect a revival in the coming sessions. As mentioned earlier, the index would have the near-term resistance at the 25200 - 25250 zone, which needs to be breached decisively to further improve the bias, and thereafter, to retest the 25650 level to strengthen the trend once again. The 50EMA level of the 24800 zone shall remain as the major and crucial support for the index, which needs to be sustained as of now.

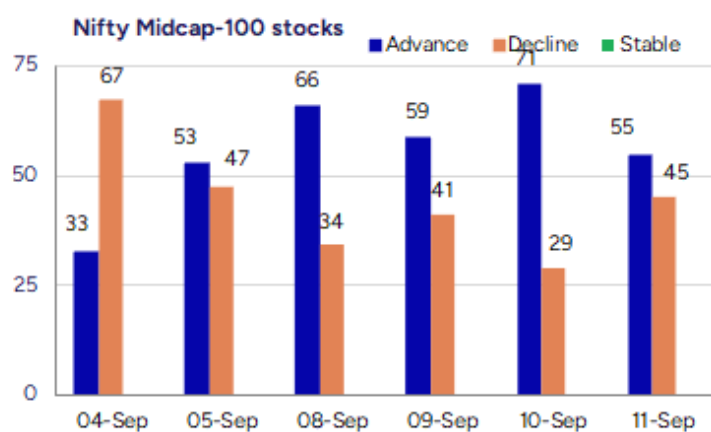
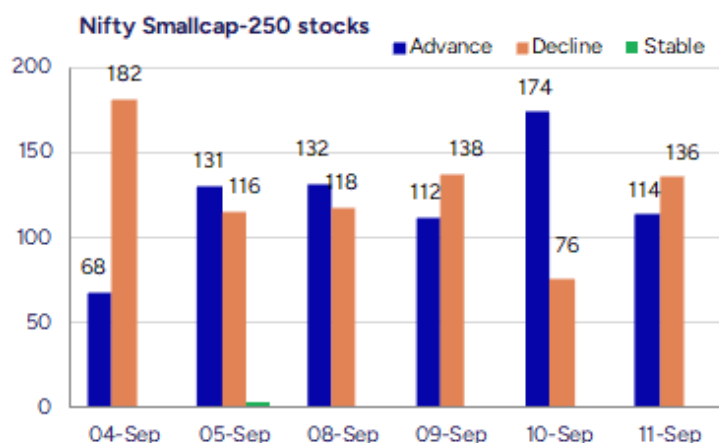
BankNifty, indicating strength, once again witnessed a pullback towards the level of 54750 and gained momentum to close near the 20DMA level of the 54666 zone, with most of the PSU Banks also supporting the frontline banking stocks, expecting a further rise in the coming sessions. As mentioned earlier, the index would have important near-term support at the 53500 level, and on the upper side, a decisive breach above the 50EMA level of the 55200 zone would trigger a fresh upward move in the coming days.

The support for the day is seen at 24850 levels, while the resistance is seen at 25200 levels. BankNifty would have the daily range of 54000–55300 levels.

Indices	Period	Closing	% Chng	Trend	Reversal	2 Sup	1 Sup	Pivot	1 Res	2 Res
Nifty	Daily	25005.50	0.13%	7	24863.40	24897	24951	24994	25048	25091
	Weekly	24741.00	1.29%	1	24673.40	24170	24456	24718	25004	25266
	Monthly	24426.85	-1.38%	-1	24777.20	23826	24126	24639	24939	25452
Bank Nifty	Daily	54669.60	0.24%	7	54137.60	54255	54462	54610	54817	54965
	Weekly	54114.55	0.86%	-9	55165.30	53153	53634	54042	54523	54931
	Monthly	53655.65	-4.12%	-1	56293.50	51929	52792	54474	55337	57019
Sensex	Daily	81548.73	0.15%	7	81049.30	81044	81296	81469	81722	81895
	Weekly	80710.76	1.13%	-9	80675.50	79024	79867	80662	81505	82300
	Monthly	79809.65	-1.69%	-2	81431.75	78110	78960	80593	81443	83075

Gainers - Losers (Nifty 500 Stocks)

Gainers				Losers			
Company Name	Last Price	% Gain	Volume	Company Name	Last Price	% Loss	Volume
Divine Power	191.45	19.99	528000	Rockingdeals	188.5	-8.54	3250
Sigachi Ind	37.7	19.61	99305804	Good Luck	1058.7	-7.99	869783
Swelect Energy	853	16.12	705867	Aaradhya Dispos	108	-7.57	42000
Piccadily Agro	723.8	13.58	3846470	Owais Metal	478.85	-6.56	28900
SMS Pharma	302.92	13.02	14764175	Affordable Robo	240.15	-6.47	180778
E Factor Experi	279.05	12.61	88800	Purv Flexipack	111.95	-6.24	142400
Surani Steel Tu	98.85	12.39	5000	Global Pet Ind	130.15	-5.35	13500



Nifty Daily chart with RSI indicator



BankNifty Daily chart with RSI indicator



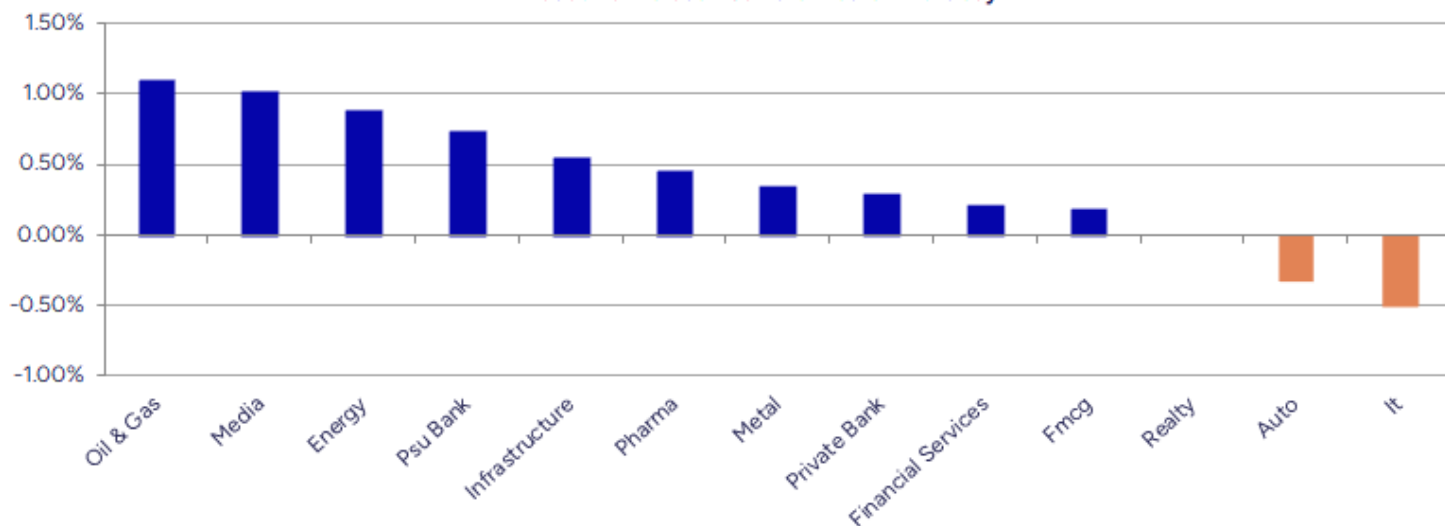
Breakouts - Cross above 200 DMA			
Company Name	LCP	Change %	200 DMA
Indoco Remedies	308.3	9.87	280.61
Rushil Decor	29.3	6.86	27.42
WOL 3D India	145	6.50	136.15
JISL	34.06	6.44	32
Greenpanel Ind	308.85	6.20	290.81
Ravi Kumar Dist	29.37	5.19	27.92
BARTRONICS IND	16.69	3.79	16.08
Fino Payments	282.5	3.77	272.24
BLS E-Services	190.57	3.76	183.67
Heads UP Vent	11.04	2.22	10.8
Firstsource Sol	364.25	1.81	357.79
Delta	87.78	1.55	86.44
Positron Energy	327.8	1.54	322.82
HMT	59.93	1.51	59.04
DRC Systems	23.07	1.50	22.73
Premier Energie	1066.4	1.45	1051.18
Sangam India	405	1.11	400.56
FDC	464.6	0.97	460.15

* Stocks crossing above its Simple Moving Average (200DMA)

Breakdown - Cross below 200 DMA			
Company Name	LCP	Change %	200 DMA
Kalana Ispat	40.6	-3.97	42.28
Crown Lifters	174.8	-3.87	181.83
Shoppers Stop	529.45	-3.03	546.02
Sarla Performan	97.93	-2.70	100.65
Precision Camsh	221.91	-2.31	227.15
Ola Electric	58.05	-1.76	59.09
Patanjali Foods	589.8	-1.40	598.15
Reliance Power	46.01	-1.33	46.63
Whirlpool	1335.6	-1.20	1351.83
Atul Auto	486.15	-1.16	491.86
Purv Flexipack	114.7	-1.13	116.01
Asian Hotel (E)	147.14	-1.13	148.82
Madhav Marbles	46.9	-1.03	47.39
Medi Assist Hea	516.3	-0.81	520.54
TechEra Enginee	179.1	-0.57	180.13
SIS	349.1	-0.53	350.95
Uttam Sugar	262.9	-0.32	263.75
Williamson Mago	33.25	-0.27	33.34

* Stocks crossing below its Simple Moving Average (200DMA)

Sectoral Indices - Gainers Losers for the day



Stocks witnessing a volume surge as compared to their 5 day average volume

Watch out for the stocks that have seen a huge spurt in its share price over the last three days

Volume Shockers - NSE					
Company name	LCP	% Chg	Volume	Avg Vol *	% Chg
Indoco Remedies	307.15	10.94	3382640	22577	14883
Sigachi Ind	37.3	18.34	95453951	1046438	9022
Greenpanel Ind	300	9.97	10170740	131200	7652
Tega Industries	2036	-2.2	1231208	24591	4907
SMS Pharma	306.37	14.3	13330116	322868	4029
Nitiraj Enginee	215.4	1.61	169830	5815	2820
Sarthak Metals	113.8	9.2	96011	3664	2520
Cool Caps	86.75	5.15	212500	8400	2430
KCK Industries	39.5	0	325000	13600	2290
Piccadily Agro	724	13.61	3477921	167182	1980
Jupiter Wagons	333.65	4.53	17770015	941872	1787
Ambuja Cements	553.85	-2.29	33547212	2137976	1469
Sigma Solve	475.65	1.41	138769	9030	1437
Guj State Petro	311	3.81	4620016	321549	1337
IKIO Tech	226.27	8.52	3555244	250168	1321
Sapphire Foods	332.65	0.14	967293	68650	1309
Tolins Tyres	191.79	9.24	11083969	832754	1231
Karnika Industr	179.8	2.25	118000	9360	1161
Sangam India	402.95	7.76	117989	9830	1100
Bajel Projects	193.8	-0.61	2293588	195695	1072

* the Average Volume of last 5 days

Price Shockers - NSE				
Company name	LCP	Prv Close	% Chg	Volume
Cyber Media	21.73	16.34	32.99	95680
Divine Power	191.45	146.45	30.73	526500
Indian Emulsifi	188.85	144.85	30.38	57500
Atlantaa	42.31	33.56	26.07	1908849
SMS Pharma	302.92	244.28	24.01	14764175
India Tourism D	668.15	544.7	22.66	515910
Indo Count	294.28	239.93	22.65	5663418
Piccadily Agro	727.5	594	22.47	3591325
Tolins Tyres	190.77	155.98	22.3	11348697
E Factor Experi	285	236.05	20.74	86400
Surani Steel Tu	99	82.1	20.58	4000
Chemcon Special	247.06	207	19.35	350174
Neptune Petro	161.5	137.75	17.24	25000
Mohit Ind	35.7	30.53	16.93	60588
Mamata Machiner	465.85	401.1	16.14	2353915
Mangalam World	216	186	16.13	46800
On Door Concept	166.75	143.85	15.92	2100
Thaai Casting	132	113.95	15.84	188800
Electrotherm	1057.55	913.6	15.76	8437
Sejal Glass	616.65	532.75	15.75	1697

* the % price rise of the last 3 days

Nifty 50 stocks - Summary Details											
Symbol	LTP	Chng	% Chng	Volume (lacs)	Turnover (crs.)	52w High	Diff with 52w H	52w Low	Diff with 52w L	365 days % chng	30 days % chng
NIFTY 50	25005.50	32.40	0.13%	2245.56	21315.55	26277.35	4.84%	21743.65	15.00%	1.58%	-0.27%
ADANIENT	2408.00	67.80	2.90%	21.12	505.59	3211.00	25.01%	2025.00	18.91%	2.49%	-21.64%
ADANIPTS	1394.80	5.70	0.41%	40.41	568.49	1494.00	6.64%	995.65	40.09%	3.71%	-4.42%
APOLLOHOSP	7885.00	-44.00	-0.55%	1.61	126.99	7980.00	1.19%	6001.00	31.39%	9.23%	14.56%
ASIANPAINT	2558.00	14.70	0.58%	4.24	108.17	3394.90	24.65%	2124.75	20.39%	2.18%	-22.81%
AXISBANK	1087.60	17.50	1.64%	52.28	565.54	1281.65	15.14%	933.50	16.51%	-0.30%	-9.86%
BAJAJ-AUTO	9119.00	-125.00	-1.35%	4.73	431.60	12774.00	28.61%	7089.35	28.63%	11.71%	-15.87%
BAJAJFINSV	2037.00	-1.20	-0.06%	7.21	146.76	2135.00	4.59%	1551.65	31.28%	6.00%	11.71%
BAJFINANCE	970.20	2.25	0.23%	59.83	581.10	978.80	0.88%	645.10	50.40%	10.27%	-86.63%
BEL	386.00	-2.05	-0.53%	190.42	738.85	436.00	11.47%	240.25	60.67%	1.08%	35.80%
BHARTIARTL	1914.20	22.80	1.21%	47.18	898.21	2045.80	6.43%	1511.00	26.68%	1.83%	19.87%
CIPLA	1561.00	-2.80	-0.18%	7.33	114.42	1702.05	8.29%	1335.00	16.93%	3.92%	-4.18%
COALINDIA	393.30	1.40	0.36%	34.42	135.27	517.85	24.05%	349.25	12.61%	2.46%	-20.20%
DRREDDY	1303.00	-1.20	-0.09%	13.49	175.20	1405.90	7.32%	1020.00	27.75%	6.95%	-80.39%
EICHERMOT	6758.50	-78.00	-1.14%	7.20	487.47	6937.00	2.57%	4508.75	49.90%	20.54%	44.32%
GRASIM	2796.10	10.30	0.37%	2.18	60.83	2898.40	3.53%	2276.95	22.80%	0.98%	3.08%
HCLTECH	1468.30	4.40	0.30%	19.83	290.33	2012.20	27.03%	1302.75	12.71%	-1.62%	-17.72%
HDFCBANK	966.50	0.60	0.06%	151.13	1459.87	1018.85	5.14%	806.50	19.84%	-51.60%	-41.47%
HDFCLIFE	775.70	-1.90	-0.24%	12.39	95.94	820.75	5.49%	584.30	32.76%	1.68%	10.63%
HEROMOTOCO	5303.00	-47.50	-0.89%	7.66	406.28	6246.25	15.10%	3344.00	58.58%	17.28%	-5.63%
HINDALCO	742.70	-0.45	-0.06%	37.56	278.67	772.65	3.88%	546.45	35.91%	10.45%	12.68%
HINDUNILVR	2626.70	-16.80	-0.64%	12.13	319.05	3035.00	13.45%	2136.00	22.97%	4.97%	-8.80%
ICICIBANK	1401.60	-2.30	-0.16%	101.92	1430.18	1500.00	6.56%	1186.00	18.18%	-2.28%	13.46%
INDUSINDBK	749.00	-2.25	-0.30%	9.75	73.18	1498.00	50.00%	606.00	23.60%	-4.09%	-47.67%
INFY	1512.20	-20.40	-1.33%	80.04	1210.43	2006.45	24.63%	1307.00	15.70%	7.31%	-19.86%
ITC	415.35	2.30	0.56%	82.74	343.78	528.50	21.41%	390.15	6.46%	-0.91%	-19.58%
JIOFIN	310.90	0.85	0.27%	61.46	191.19	363.00	14.35%	198.65	56.51%	-5.40%	-11.79%
JSWSTEEL	1100.00	-1.20	-0.11%	8.52	93.65	1115.50	1.39%	880.00	25.00%	4.61%	17.30%
KOTAKBANK	1969.90	-3.40	-0.17%	23.63	466.60	2301.90	14.42%	1679.05	17.32%	-0.13%	10.14%
LT	3542.50	-7.50	-0.21%	11.78	417.09	3963.50	10.62%	2965.30	19.47%	-3.23%	-1.28%
M&M	3597.00	-7.40	-0.21%	19.50	701.43	3723.80	3.41%	2425.00	48.33%	13.13%	33.99%
MARUTI	15119.00	11.00	0.07%	6.57	992.52	15384.00	1.72%	10725.00	40.97%	19.93%	23.20%
NESTLEIND	1220.90	3.40	0.28%	7.83	95.66	1389.00	12.10%	1055.00	15.73%	10.18%	-51.98%
NTPC	331.50	5.85	1.80%	103.08	341.29	448.45	26.08%	292.80	13.22%	-3.12%	-17.83%
ONGC	233.99	2.25	0.97%	110.47	258.31	302.00	22.52%	205.00	14.14%	-0.88%	-21.60%
POWERGRID	286.40	3.45	1.22%	74.06	212.01	366.25	21.80%	247.30	15.81%	-0.67%	-15.32%
RELIANCE	1382.10	5.10	0.37%	97.64	1349.80	1551.00	10.89%	1114.85	23.97%	-0.66%	-52.89%
SBILIFE	1813.60	-20.10	-1.10%	6.63	120.35	1927.95	5.93%	1372.55	32.13%	-0.93%	-1.07%
SBIN	824.60	6.40	0.78%	74.25	611.22	875.45	5.81%	680.00	21.26%	-0.64%	4.54%
SHRIRAMFIN	620.20	15.40	2.55%	84.13	519.87	730.45	15.09%	493.35	25.71%	-2.07%	-81.45%
SUNPHARMA	1608.90	15.50	0.97%	17.62	283.27	1960.35	17.93%	1553.05	3.60%	-0.93%	-13.23%
TATACONSUM	1104.00	3.00	0.27%	10.31	113.57	1234.30	10.56%	882.90	25.04%	3.96%	-8.57%
TATAMOTORS	705.95	-3.15	-0.44%	55.30	391.04	1049.00	32.70%	535.75	31.77%	8.47%	-31.54%
TATASTEEL	169.40	-0.03	-0.02%	138.29	234.33	172.50	1.80%	122.62	38.15%	6.88%	13.39%
TCS	3125.20	15.20	0.49%	22.63	706.53	4549.35	31.30%	2991.60	4.47%	2.28%	-31.01%
TECHM	1520.00	-6.00	-0.39%	8.97	135.97	1807.70	15.92%	1209.40	25.68%	3.03%	-5.06%
TITAN	3580.00	-40.60	-1.12%	4.95	178.03	3867.00	7.42%	2925.00	22.39%	4.40%	-2.87%
TRENT	5171.00	-22.00	-0.42%	5.85	302.74	8345.00	38.03%	4488.00	15.22%	-4.60%	-27.25%
ULTRACEMCO	12392.00	-86.00	-0.69%	1.33	164.55	13097.00	5.38%	10047.85	23.33%	0.59%	8.12%
WIPRO	254.06	-1.69	-0.66%	58.63	148.62	324.60	21.73%	228.00	11.43%	5.85%	-51.36%
ETERNAL	328.35	3.95	1.22%	223.35	733.71	334.40	1.81%	194.80	68.56%	4.85%	#VALUE!

Disclaimer / Disclosures

ANALYST CERTIFICATION

I, Mrs. Vaishali Parekh B.com, Research Analyst, author and the name subscribed to this report, hereby certify that all of the views expressed in this research report accurately reflect our views about the subject issuer(s) or securities. We also certify that no part of our compensation was, is, or will be directly or indirectly related to the specific recommendation(s) or view(s) in this report.

Terms & conditions and other disclosures:

Prabhudas Lilladher Pvt. Ltd, Mumbai, India (hereinafter referred to as "PL") is engaged in the business of Stock Broking, Portfolio Manager, Depository Participant and distribution for third party financial products. PL is a subsidiary of Prabhudas Lilladher Advisory Services Pvt Ltd. which has its various subsidiaries engaged in business of commodity broking, investment banking, financial services (margin funding) and distribution of third party financial/other products, details in respect of which are available at www.plindia.com

This document has been prepared by the Research Division of PL and is meant for use by the recipient only as information and is not for circulation. This document is not to be reported or copied or made available to others without prior permission of PL. It should not be considered or taken as an offer to sell or a solicitation to buy or sell any security.

The information contained in this report has been obtained from sources that are considered to be reliable. However, PL has not independently verified the accuracy or completeness of the same. Neither PL nor any of its affiliates, its directors or its employees accepts any responsibility of whatsoever nature for the information, statements and opinion given, made available or expressed herein or for any omission therein.

Recipients of this report should be aware that past performance is not necessarily a guide to future performance and value of investments can go down as well. The suitability or otherwise of any investments will depend upon the recipient's particular circumstances and, in case of doubt, advice should be sought from an independent expert/advisor.

Either PL or its affiliates or its directors or its employees or its representatives or its clients or their relatives may have position(s), make market, act as principal or engage in transactions of securities of companies referred to in this report and they may have used the research material prior to publication.

PL may from time to time solicit or perform investment banking or other services for any company mentioned in this document.

PL is registered as Research Analyst under Securities and Exchange Board of India (Research Analysts) Regulations, 2014 PL submits that no material disciplinary action has been taken on us by any Regulatory Authority impacting Equity Research Analysis activities.

PL or its research analysts or its associates or his relatives do not have any financial interest in the subject company.

PL or its research analysts or its associates or his relatives do not have actual/beneficial ownership of one per cent or more securities of the subject company at the end of the month immediately preceding the date of publication of the research report.

PL or its research analysts or its associates or his relatives do not have any material conflict of interest at the time of publication of the research report.

PL or its associates might have received compensation from the subject company in the past twelve months.

PL or its associates might have managed or co-managed public offering of securities for the subject company in the past twelve months or mandated by the subject company for any other assignment in the past twelve months.

PL or its associates might have received any compensation for investment banking or merchant banking or brokerage services from the subject company in the past twelve months.

PL or its associates might have received any compensation for products or services other than investment banking or merchant banking or brokerage services from the subject company in the past twelve months PL or its associates might have received any compensation or other benefits from the subject company or third party in connection with the research report.

PL encourages independence in research report preparation and strives to minimize conflict in preparation of research report. PL or its analysts did not receive any compensation or other benefits from the subject Company or third party in connection with the preparation of the research report. PL or its Research Analysts do not have any material conflict of interest at the time of publication of this report.

It is confirmed that Mrs.Vaishali Parekh B.com, Research Analyst of this report has not received any compensation from the companies mentioned in the report in the preceding twelve months compensation of our Research Analysts is not based on any specific merchant banking, investment banking or brokerage service transactions.

The Research analysts for this report certifies that all of the views expressed in this report accurately reflect his or her personal views about the subject company or companies and its or their securities, and no part of his or her compensation was, is or will be, directly or indirectly related to specific recommendations or views expressed in this report.

The research analysts for this report has not served as an officer, director or employee of the subject company PL or its research analysts have not engaged in market making activity for the subject company

Our sales people, traders, and other professionals or affiliates may provide oral or written market commentary or trading strategies to our clients that reflect opinions that are contrary to the opinions expressed herein, and our proprietary trading and investing businesses may make investment decisions that are inconsistent with the recommendations expressed herein. In reviewing these materials, you should be aware that any or all of the foregoing, among other things, may give rise to real or potential conflicts of interest.

PL and its associates, their directors and employees may (a) from time to time, have a long or short position in, and buy or sell the securities of the subject company or (b) be engaged in any other transaction involving such securities and earn brokerage or other compensation or act as a market maker in the financial instruments of the subject company or act as an advisor or lender/borrower to the subject company or may have any other potential conflict of interests with respect to any recommendation and other related information and opinions.