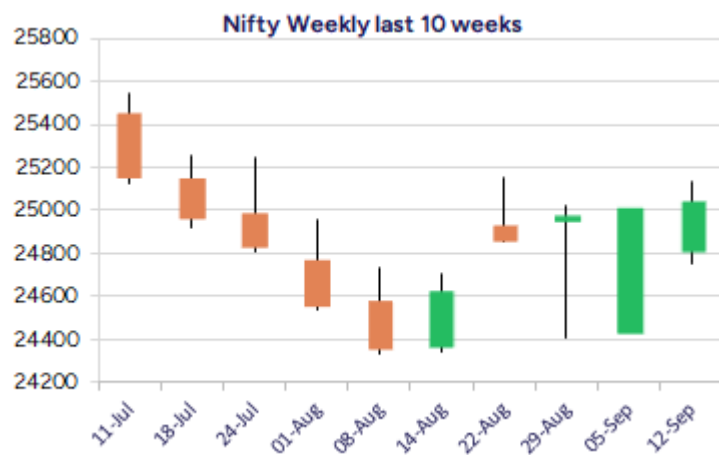
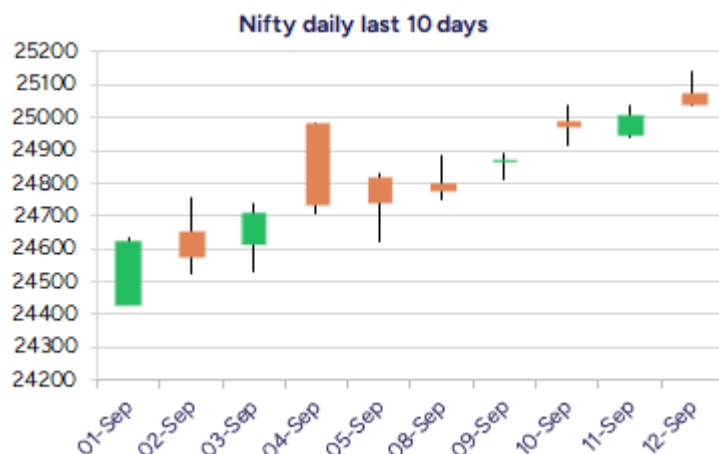


Date: 15th Sep 2025

* Sensex 81904.70 + 355.97

* Nifty 25114.00 + 108.50

* Bank Nifty 54809.30 + 139.70



*Blue candle → Close rate > Open rate * Red candle → Close rate < Open rate

Market Preview

Nifty gains for the 8th consecutive sessions

Nifty has been gathering strength in the last two weeks and has moved past the 25000 zone convincingly with sentiment easing out and hoping for further positive developments in the coming sessions. BankNifty has been overall sluggish but slowly and steadily is rising with optimistic view in the coming days anticipating for a fresh upward move. The market breadth was overall flat with slightly shifted towards the positive side as indicated by the advance decline ratio at close.

Market Forecast

Nifty daily range 25000 - 25300

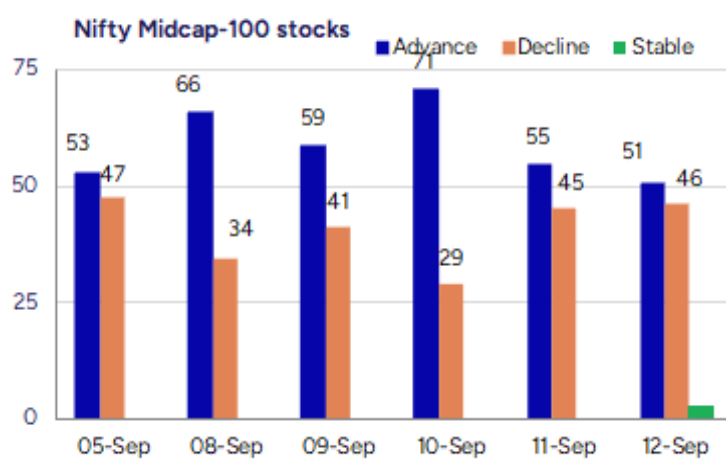
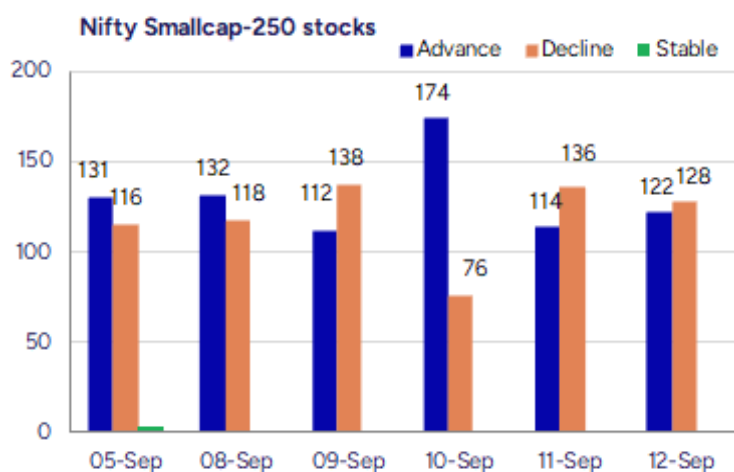
Nifty, continue to march ahead with a 8th consecutive winning streak and is slowly gaining strength with bias and sentiment getting better nearing the important hurdle of 25250-25300 zone. The index as mentioned earlier, would need a decisive breach above the 25300 zone to establish conviction and thereafter, can trigger for a breakout to anticipate for further fresh upward move. The 50EMA level at 24800 zone would be the near-term important support which needs to be sustained as of now. BankNifty, has been witnessing a very slow and sluggish movement rising with a stagnant pace but sentiment overall improving as witnessed in the last few sessions. As we have been mentioning, the index would need a decisive move past the 50EMA at 55200 zone to overall improve the bias and thereafter, establishing conviction anticipating for fresh upward move in the coming days with 53600 level maintained as the important support zone which needs to be sustained.

The support for the day is seen at 25000 levels, while the resistance is seen at 25300 levels. BankNifty would have the daily range of 54400-55500 levels.

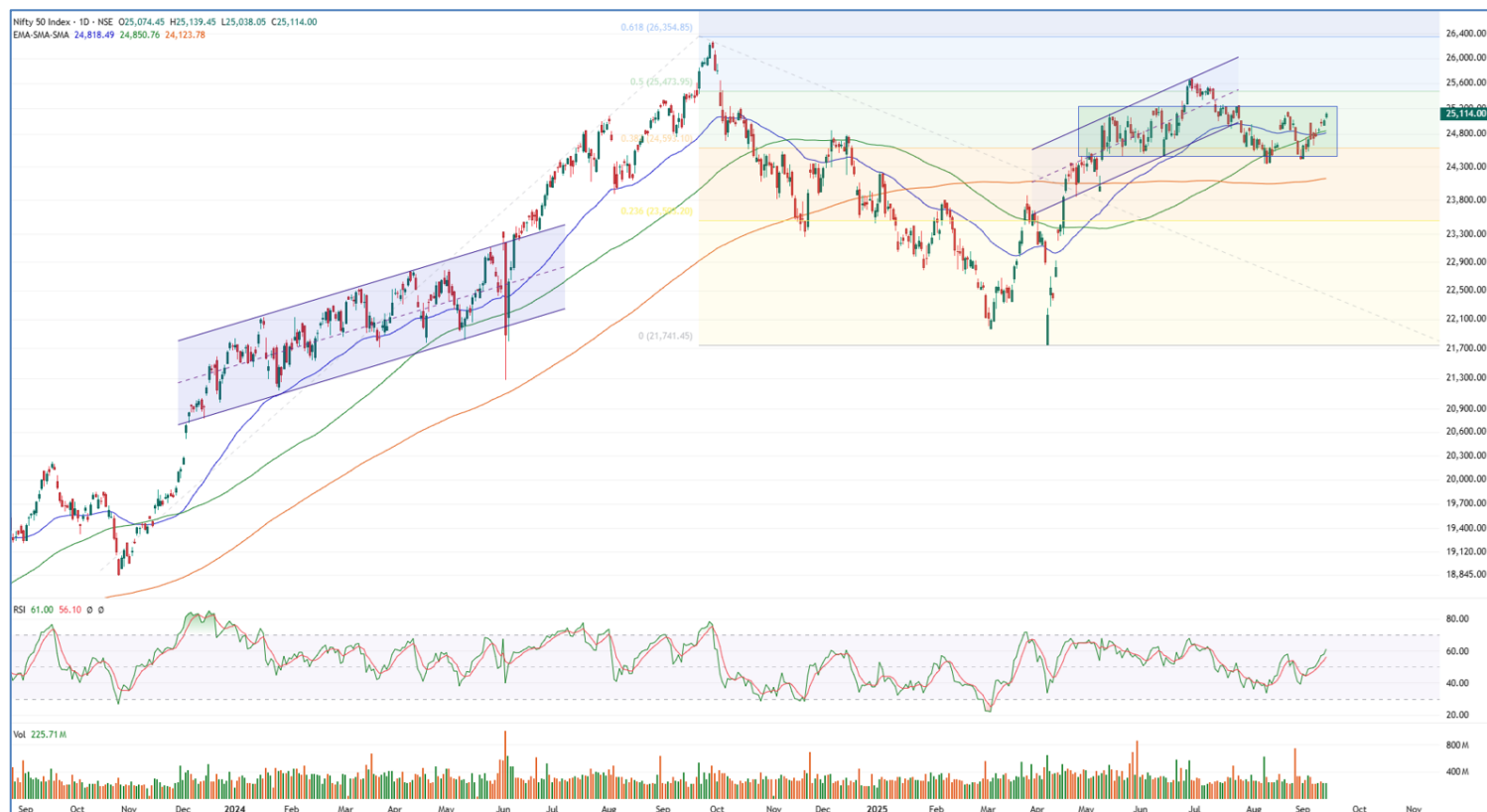
Indices	Period	Closing	% Chng	Trend	Reversal	2 Sup	1 Sup	Pivot	1 Res	2 Res
Nifty	Daily	25114.00	0.43%	8	24940.85	24996	25055	25097	25156	25199
	Weekly	25114.00	1.51%	2	24761.30	24615	24864	25002	25252	25389
	Monthly	24426.85	-1.38%	-1	24777.20	23826	24126	24639	24939	25452
Bank Nifty	Daily	54809.30	0.26%	8	54281.90	54475	54642	54747	54914	55019
	Weekly	54809.30	1.28%	-10	54851.95	53796	54303	54577	55084	55359
	Monthly	53655.65	-4.12%	-1	56293.50	51929	52792	54474	55337	57019
Sensex	Daily	81904.70	0.44%	8	81299.70	81495	81700	81846	82051	82198
	Weekly	81904.70	1.48%	1	80839.90	80288	81096	81545	82353	82801
	Monthly	79809.65	-1.69%	-2	81431.75	78110	78960	80593	81443	83075

Gainers - Losers (Nifty 500 Stocks)

Gainers				Losers			
Company Name	Last Price	% Gain	Volume	Company Name	Last Price	% Loss	Volume
SG MART	359.2	35	95602	NDTV	131.73	-16.66	424063
Themis Medicare	122.12	20	1010071	ARC Insulation	111	-7.23	45000
Nagreeka Export	30.31	19.99	699989	JITF Infralogis	409.15	-6.76	161348
Lambodhara Text	152.68	19.99	721731	Nila Spaces	15.42	-6.43	2056376
CCCL	22.28	19.98	29435490	Paradeep Phosp	170.41	-5.87	8373242
Divine Power	229.7	19.98	567000	Amiable	64.5	-5.15	1600
Bhadora Industr	119	19.96	573600	Astron Paper	15.9	-5.02	283149



Nifty Daily chart with RSI indicator



BankNifty Daily chart with RSI indicator



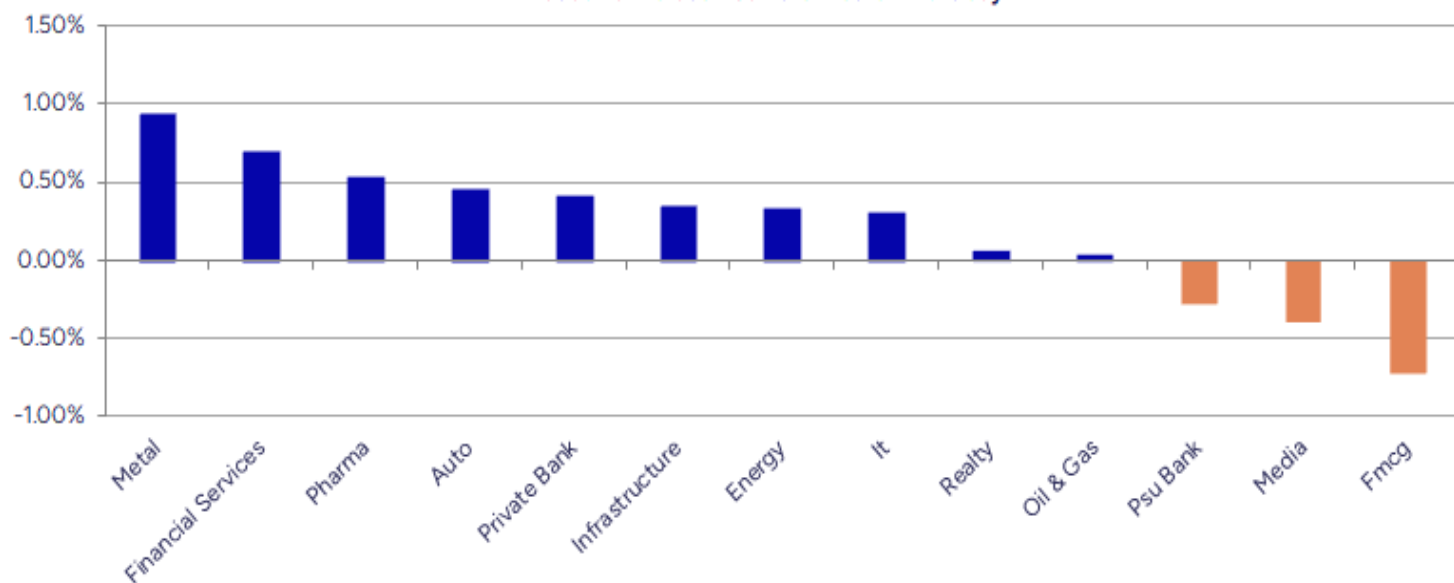
Breakouts - Cross above 200 DMA			
Company Name	LCP	Change %	200 DMA
NK Industries	72.55	9.33	66.36
Atul Auto	524.7	6.75	491.54
Lambodhara Text	152.68	6.74	143.04
JBM Auto	712.95	5.24	677.45
Purv Flexipack	121.55	5.14	115.61
Hind Zinc	462.95	3.66	446.62
Gujarat Pipavav	160.75	3.62	155.13
Shriram Propert	93	3.61	89.76
Coral India Fin	45.94	2.73	44.72
Airo Lam	111.68	2.11	109.37
Prakash Ind	166.8	2.02	163.5
Snowman Logist	58.87	1.99	57.72
Vedanta	450.9	1.93	442.35
Shriram Finance	632.85	1.78	621.81
Tokyo Plast	127.88	1.70	125.74
Adani Trans	828.35	1.69	814.55
Kirloskar Ind	3906	1.41	3851.87
Railtel	372.5	1.35	367.54

* Stocks crossing above its Simple Moving Average (200DMA)

Breakdown - Cross below 200 DMA			
Company Name	LCP	Change %	200 DMA
NDTV	131.73	-8.15	143.42
Asian Hotels	320.8	-3.77	333.38
Astron Paper &	15.9	-3.34	16.45
TAC Infosec	1112.9	-3.28	1150.63
TechEra Enginee	174.2	-3.21	179.97
DRC Systems	22.22	-2.24	22.73
Patanjali Foods	585.9	-2.05	598.15
Allidigi Tech	944.1	-1.79	961.35
Petro Carbon	182.2	-1.70	185.35
Amara Raja Batt	1028.1	-1.35	1042.15
Pudumjee Paper	127.46	-1.20	129.01
Orbit Exports	188.57	-1.10	190.66
Master Trust	146.27	-1.04	147.8
PI Industries	3700.4	-0.87	3733.06
Antony Waste	585.8	-0.84	590.78
BARTRONICS IND	15.94	-0.81	16.07
NFL	97.55	-0.65	98.19
Pearl Global In	1335.9	-0.56	1343.44

* Stocks crossing below its Simple Moving Average (200DMA)

Sectoral Indices - Gainers Losers for the day



Stocks witnessing a volume surge as compared to their 5 day average volume

Watch out for the stocks that have seen a huge spurt in its share price over the last three days

Volume Shockers - NSE					
Company name	LCP	% Chg	Volume	Avg Vol *	% Chg
Sigachi Ind	42.81	13.55	191298051	1046438	18181
JBM Auto	712.4	13.83	43101685	287302	14902
Lambodhara Text	152.68	19.99	721687	5988	11952
Cool Caps	94	12.1	642500	8400	7549
P E Analytics	198	2.78	507600	7560	6614
Punjab Chemical	1228.9	8.53	1126406	18506	5987
Tega Industries	1949.7	-4.32	1478885	24591	5914
Nagreeka Export	30.31	19.99	695789	21970	3067
NK Industries	72.55	9.99	35152	1224	2772
Manomay Tex Ind	171.64	2.74	79001	2980	2551
CCCL	22.28	19.98	29431023	1250265	2254
KCK Industries	38.75	-1.65	307500	13600	2161
Themis Medicare	122.12	20	1010064	47372	2032
Airo Lam	111.8	3.85	56262	2663	2013
Gujarat Pipavav	162.43	7.01	10639132	560156	1799
Sigma Solve	475.45	-0.05	163798	9030	1714
Hind Copper	278.4	12	49702807	2811349	1668
Jeena Sikho	789.15	4.27	317809	18612	1608
Kody Technolab	717	1.88	68300	4360	1467
Tokyo Plast	127.99	4.68	88336	5809	1421

* the Average Volume of last 5 days

Price Shockers - NSE				
Company name	LCP	Prv Close	% Chg	Volume
Divine Power	229.7	155.7	47.53	567000
Tolins Tyres	192.8	153.98	25.21	4635810
Themis Medicare	122.12	99.88	22.27	1010064
Swelect Energy	907.1	748.95	21.12	1000961
Lambodhara Text	152.68	126.94	20.28	721687
Indo Count	284.7	237.28	19.98	585249
Dilip Buildcon	547.8	459.45	19.23	2156667
Apollo Micro Sy	323.9	273.2	18.56	39269466
Piccadily Agro	709.3	601.6	17.9	595201
Greenpanel Ind	317.15	270.6	17.2	4869454
SMS Pharma	290.31	248.51	16.82	2483577
MSP Steel	37.73	32.31	16.77	7238499
Nagreeka Export	30.31	25.99	16.62	695789
Sejal Glass	647.45	559.35	15.75	1922
TIL	337.4	291.5	15.75	27994
Bafna Pharma	117.11	101.18	15.74	64893
Osia Hyper Reta	28.45	24.59	15.7	887403
Atlantaa	42.01	36.37	15.51	285144
Jakharia Fabric	117.65	101.95	15.4	3200
Mohit Ind	38	32.99	15.19	131732

* the % price rise of the last 3 days

Nifty 50 stocks - Summary Details											
Symbol	LTP	Chng	% Chng	Volume (lacs)	Turnover (crs.)	52w High	Diff with 52w H	52w Low	Diff with 52w L	365 days % chng	30 days % chng
NIFTY 50	25114.00	108.50	0.43%	2257.08	21332.52	26277.35	4.43%	21743.65	15.50%	2.12%	0.35%
ADANIENT	2389.00	-9.80	-0.41%	5.34	128.29	3211.00	25.60%	2025.00	17.98%	4.83%	-18.35%
ADANIPTS	1393.90	0.80	0.06%	14.66	204.84	1494.00	6.70%	995.65	40.00%	4.70%	-2.62%
APOLLOHOSP	7864.50	-15.00	-0.19%	1.18	92.75	7980.00	1.45%	6001.00	31.05%	8.89%	14.19%
ASIANPAINT	2540.50	-15.40	-0.60%	5.48	139.66	3394.90	25.17%	2124.75	19.57%	3.13%	-24.10%
AXISBANK	1105.50	18.10	1.66%	60.14	663.89	1281.65	13.74%	933.50	18.43%	1.63%	-8.32%
BAJAJ-AUTO	9025.00	-88.50	-0.97%	4.81	436.82	12774.00	29.35%	7089.35	27.30%	11.19%	-20.20%
BAJAJFINSV	2083.20	45.40	2.23%	15.47	319.57	2135.00	2.43%	1551.65	34.26%	6.80%	11.16%
BAJFINANCE	1002.70	32.45	3.34%	114.12	1132.06	1004.60	0.19%	645.10	55.43%	13.75%	-86.79%
BEL	399.45	14.30	3.71%	263.56	1043.00	436.00	8.38%	240.25	66.26%	1.26%	33.71%
BHARTIARTL	1903.70	-9.30	-0.49%	31.93	610.23	2045.80	6.95%	1511.00	25.99%	3.39%	21.24%
CIPLA	1571.50	10.70	0.69%	7.86	123.62	1702.05	7.67%	1335.00	17.72%	2.58%	-4.15%
COALINDIA	394.20	0.85	0.22%	42.76	168.69	517.85	23.88%	349.25	12.87%	2.08%	-18.72%
DRREDDY	1314.00	10.90	0.84%	10.43	137.13	1405.90	6.54%	1020.00	28.82%	6.79%	-80.29%
EICHERMOT	6875.00	117.00	1.73%	7.32	502.77	6937.00	0.89%	4508.75	52.48%	19.44%	42.98%
GRASIM	2801.00	2.00	0.07%	1.68	47.16	2898.40	3.36%	2276.95	23.02%	2.14%	4.40%
HCLTECH	1466.00	-1.70	-0.12%	21.11	309.76	2012.20	27.14%	1302.75	12.53%	-2.09%	-17.49%
HDFCBANK	966.90	-0.90	-0.09%	143.45	1386.68	1018.85	5.10%	806.50	19.89%	-50.87%	-41.13%
HDFCLIFE	777.80	3.55	0.46%	22.59	175.91	820.75	5.23%	584.30	33.12%	1.05%	10.58%
HEROMOTOCO	5310.00	8.00	0.15%	5.38	286.37	6246.25	14.99%	3344.00	58.79%	14.14%	-6.23%
HINDALCO	757.90	15.25	2.05%	56.99	429.02	772.65	1.91%	546.45	38.70%	11.33%	14.66%
HINDUNILVR	2582.00	-40.00	-1.53%	13.68	353.41	3035.00	14.93%	2136.00	20.88%	5.56%	-9.72%
ICICIBANK	1417.50	15.90	1.13%	77.70	1097.77	1500.00	5.50%	1186.00	19.52%	-1.43%	13.37%
INDUSINDBK	741.00	-7.60	-1.02%	18.52	137.84	1498.00	50.53%	606.00	22.28%	-4.40%	-47.33%
INFY	1524.10	14.40	0.95%	128.55	1966.59	2006.45	24.04%	1307.00	16.61%	6.01%	-20.96%
ITC	413.55	-1.50	-0.36%	78.03	323.74	528.50	21.75%	390.15	6.00%	-0.31%	-19.31%
JIOFIN	311.20	0.50	0.16%	60.48	188.05	363.00	14.27%	198.65	56.66%	-4.98%	-9.76%
JSWSTEEL	1099.50	0.50	0.05%	10.58	116.10	1115.50	1.43%	880.00	24.94%	4.85%	18.46%
KOTAKBANK	1974.70	2.40	0.12%	36.15	714.19	2301.90	14.21%	1679.05	17.61%	0.68%	10.23%
LT	3579.00	39.30	1.11%	11.47	410.81	3963.50	9.70%	2965.30	20.70%	-3.97%	0.08%
M&M	3591.00	-4.70	-0.13%	28.39	1021.86	3723.80	3.57%	2425.00	48.08%	11.10%	35.47%
MARUTI	15307.00	212.00	1.40%	4.20	643.22	15384.00	0.50%	10725.00	42.72%	17.56%	23.30%
NESTLEIND	1218.00	-2.80	-0.23%	6.33	76.94	1389.00	12.31%	1055.00	15.45%	11.89%	-51.69%
NTPC	331.70	0.65	0.20%	52.57	173.93	448.45	26.03%	292.80	13.29%	-2.66%	-15.04%
ONGC	233.20	-0.56	-0.24%	60.73	141.88	302.00	22.78%	205.00	13.76%	-0.75%	-18.07%
POWERGRID	288.30	1.50	0.52%	76.18	218.54	366.25	21.28%	247.30	16.58%	0.76%	-13.93%
RELIANCE	1395.00	11.70	0.85%	74.03	1031.04	1551.00	10.06%	1114.85	25.13%	0.21%	-52.35%
SBILIFE	1830.40	16.20	0.89%	5.10	92.99	1927.95	5.06%	1372.55	33.36%	-1.29%	-2.42%
SBIN	823.20	-0.45	-0.05%	50.77	417.76	875.45	5.97%	680.00	21.06%	0.37%	7.16%
SHRIRAMFIN	630.00	9.95	1.60%	108.16	681.89	730.45	13.75%	493.35	27.70%	1.33%	-81.10%
SUNPHARMA	1610.20	0.50	0.03%	18.79	303.53	1960.35	17.86%	1553.05	3.68%	-0.77%	-12.79%
TATACONSUM	1105.00	-0.30	-0.03%	11.32	124.82	1234.30	10.48%	882.90	25.16%	5.59%	-8.23%
TATAMOTORS	714.15	8.30	1.18%	82.51	589.79	1011.55	29.40%	535.75	33.30%	7.91%	-27.70%
TATASTEEL	169.58	0.17	0.10%	121.19	205.61	172.50	1.69%	122.62	38.30%	5.78%	14.33%
TCS	3133.00	8.80	0.28%	14.47	453.43	4549.35	31.13%	2991.60	4.73%	2.93%	-30.25%
TECHM	1525.50	4.30	0.28%	7.71	117.43	1807.70	15.61%	1209.40	26.14%	0.79%	-5.08%
TITAN	3565.50	-18.70	-0.52%	2.75	98.45	3867.00	7.80%	2925.00	21.90%	2.79%	-3.42%
TRENT	5129.00	-42.00	-0.81%	6.25	322.90	8345.00	38.54%	4488.00	14.28%	-3.63%	-27.67%
ULTRACEMCO	12370.00	-22.00	-0.18%	1.53	189.81	13097.00	5.55%	10047.85	23.11%	-0.46%	7.87%
WIPRO	252.00	-1.91	-0.75%	53.45	134.81	324.60	22.37%	228.00	10.53%	5.04%	-50.63%
ETERNAL	321.85	-6.25	-1.90%	199.24	645.19	334.40	3.75%	194.80	65.22%	7.26%	#VALUE!

Disclaimer / Disclosures

ANALYST CERTIFICATION

I, Mrs. Vaishali Parekh B.com, Research Analyst, author and the name subscribed to this report, hereby certify that all of the views expressed in this research report accurately reflect our views about the subject issuer(s) or securities. We also certify that no part of our compensation was, is, or will be directly or indirectly related to the specific recommendation(s) or view(s) in this report.

Terms & conditions and other disclosures:

Prabhudas Lilladher Pvt. Ltd, Mumbai, India (hereinafter referred to as "PL") is engaged in the business of Stock Broking, Portfolio Manager, Depository Participant and distribution for third party financial products. PL is a subsidiary of Prabhudas Lilladher Advisory Services Pvt Ltd. which has its various subsidiaries engaged in business of commodity broking, investment banking, financial services (margin funding) and distribution of third party financial/other products, details in respect of which are available at www.plindia.com

This document has been prepared by the Research Division of PL and is meant for use by the recipient only as information and is not for circulation. This document is not to be reported or copied or made available to others without prior permission of PL. It should not be considered or taken as an offer to sell or a solicitation to buy or sell any security.

The information contained in this report has been obtained from sources that are considered to be reliable. However, PL has not independently verified the accuracy or completeness of the same. Neither PL nor any of its affiliates, its directors or its employees accepts any responsibility of whatsoever nature for the information, statements and opinion given, made available or expressed herein or for any omission therein.

Recipients of this report should be aware that past performance is not necessarily a guide to future performance and value of investments can go down as well. The suitability or otherwise of any investments will depend upon the recipient's particular circumstances and, in case of doubt, advice should be sought from an independent expert/advisor.

Either PL or its affiliates or its directors or its employees or its representatives or its clients or their relatives may have position(s), make market, act as principal or engage in transactions of securities of companies referred to in this report and they may have used the research material prior to publication.

PL may from time to time solicit or perform investment banking or other services for any company mentioned in this document.

PL is registered as Research Analyst under Securities and Exchange Board of India (Research Analysts) Regulations, 2014 PL submits that no material disciplinary action has been taken on us by any Regulatory Authority impacting Equity Research Analysis activities.

PL or its research analysts or its associates or his relatives do not have any financial interest in the subject company.

PL or its research analysts or its associates or his relatives do not have actual/beneficial ownership of one per cent or more securities of the subject company at the end of the month immediately preceding the date of publication of the research report.

PL or its research analysts or its associates or his relatives do not have any material conflict of interest at the time of publication of the research report.

PL or its associates might have received compensation from the subject company in the past twelve months.

PL or its associates might have managed or co-managed public offering of securities for the subject company in the past twelve months or mandated by the subject company for any other assignment in the past twelve months.

PL or its associates might have received any compensation for investment banking or merchant banking or brokerage services from the subject company in the past twelve months.

PL or its associates might have received any compensation for products or services other than investment banking or merchant banking or brokerage services from the subject company in the past twelve months PL or its associates might have received any compensation or other benefits from the subject company or third party in connection with the research report.

PL encourages independence in research report preparation and strives to minimize conflict in preparation of research report. PL or its analysts did not receive any compensation or other benefits from the subject Company or third party in connection with the preparation of the research report. PL or its Research Analysts do not have any material conflict of interest at the time of publication of this report.

It is confirmed that Mrs.Vaishali Parekh B.com, Research Analyst of this report has not received any compensation from the companies mentioned in the report in the preceding twelve months compensation of our Research Analysts is not based on any specific merchant banking, investment banking or brokerage service transactions.

The Research analysts for this report certifies that all of the views expressed in this report accurately reflect his or her personal views about the subject company or companies and its or their securities, and no part of his or her compensation was, is or will be, directly or indirectly related to specific recommendations or views expressed in this report.

The research analysts for this report has not served as an officer, director or employee of the subject company PL or its research analysts have not engaged in market making activity for the subject company

Our sales people, traders, and other professionals or affiliates may provide oral or written market commentary or trading strategies to our clients that reflect opinions that are contrary to the opinions expressed herein, and our proprietary trading and investing businesses may make investment decisions that are inconsistent with the recommendations expressed herein. In reviewing these materials, you should be aware that any or all of the foregoing, among other things, may give rise to real or potential conflicts of interest.

PL and its associates, their directors and employees may (a) from time to time, have a long or short position in, and buy or sell the securities of the subject company or (b) be engaged in any other transaction involving such securities and earn brokerage or other compensation or act as a market maker in the financial instruments of the subject company or act as an advisor or lender/borrower to the subject company or may have any other potential conflict of interests with respect to any recommendation and other related information and opinions.