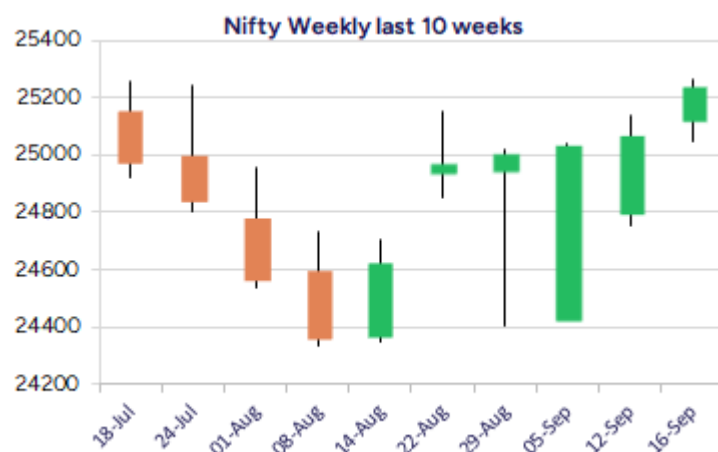
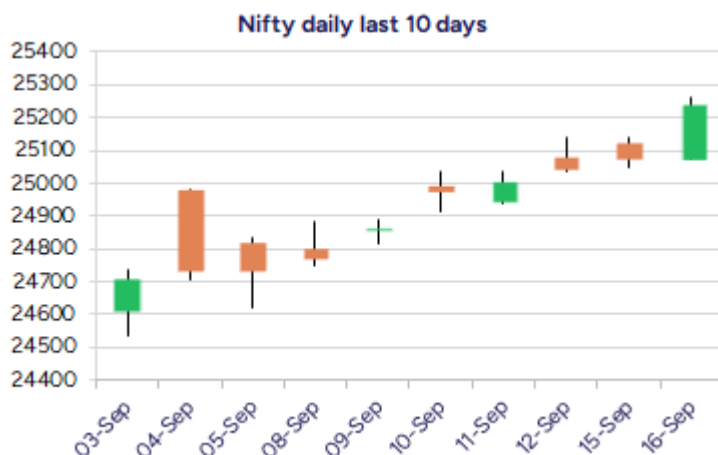


Date: 17th Sep 2025

* Sensex 82380.69 + 594.95

* Nifty 25239.10 + 169.90

* Bank Nifty 55147.60 + 259.75



*Blue candle → Close rate > Open rate * Red candle → Close rate < Open rate

Market Preview

Nifty gains momentum; attains 25250 zone

Nifty witnessed an overall positive session gaining momentum to touch the 25250 level which is an important resistance zone which needs to be breached decisively to establish conviction for further rise in the coming days. BankNifty picked up some momentum to cross the 55000 zone anticipating for further positive developments with the Fed Outcome awaited. The market breadth was positive with the advance decline indicating a ratio of 2:1 at close.

Market Forecast

Nifty daily range 25100 - 25500

Nifty, gained further with a robust move witnessed during the session improving the bias and arriving near the important hurdle of 25250 zone which needs to be breached decisively to establish conviction and thereafter, anticipate for further rise in the coming days. With the sentiment easing out and further developments awaited in the coming days, we can expect positive move in the indices with the 50EMA zone at 24800 level positioned as the near-term important support which needs to be sustained as of now.

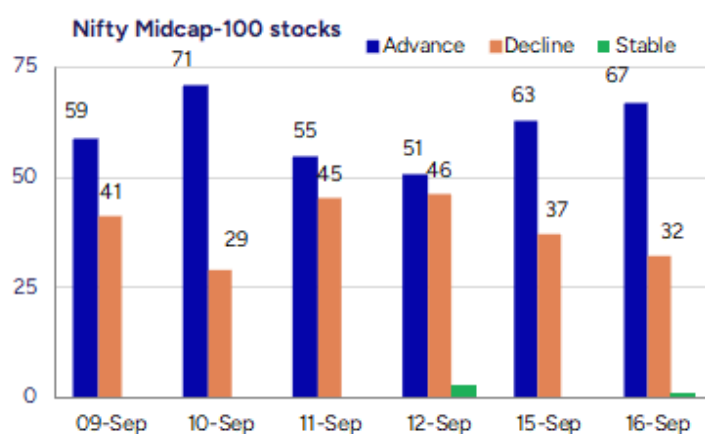
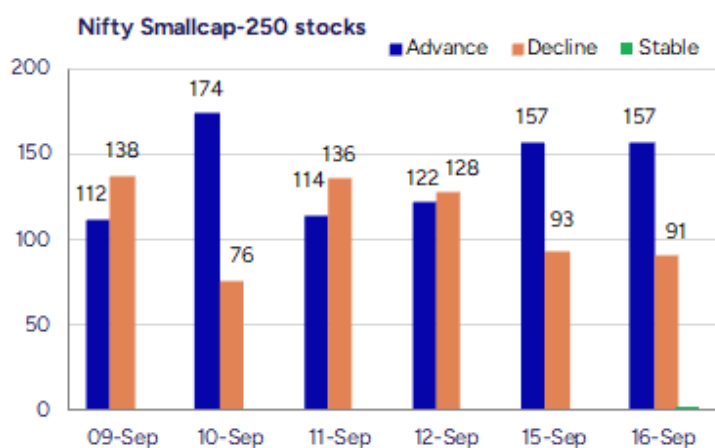
BankNifty, witnessed a decent rise moving past the 55000 zone ahead of the Fed Outcome which is expected in the coming sessions and as mentioned earlier, would need a decisive move past the 50EMA at 55150 zone to overall improve the bias and thereafter, establish conviction to anticipate for fresh upward move in the coming days. The 53600 zone shall be positioned as the important support zone from current rate which needs to be sustained to maintain the overall bias intact.

The support for the day is seen at 25100 levels, while the resistance is seen at 25500 levels. BankNifty would have the daily range of 54700-55700 levels.

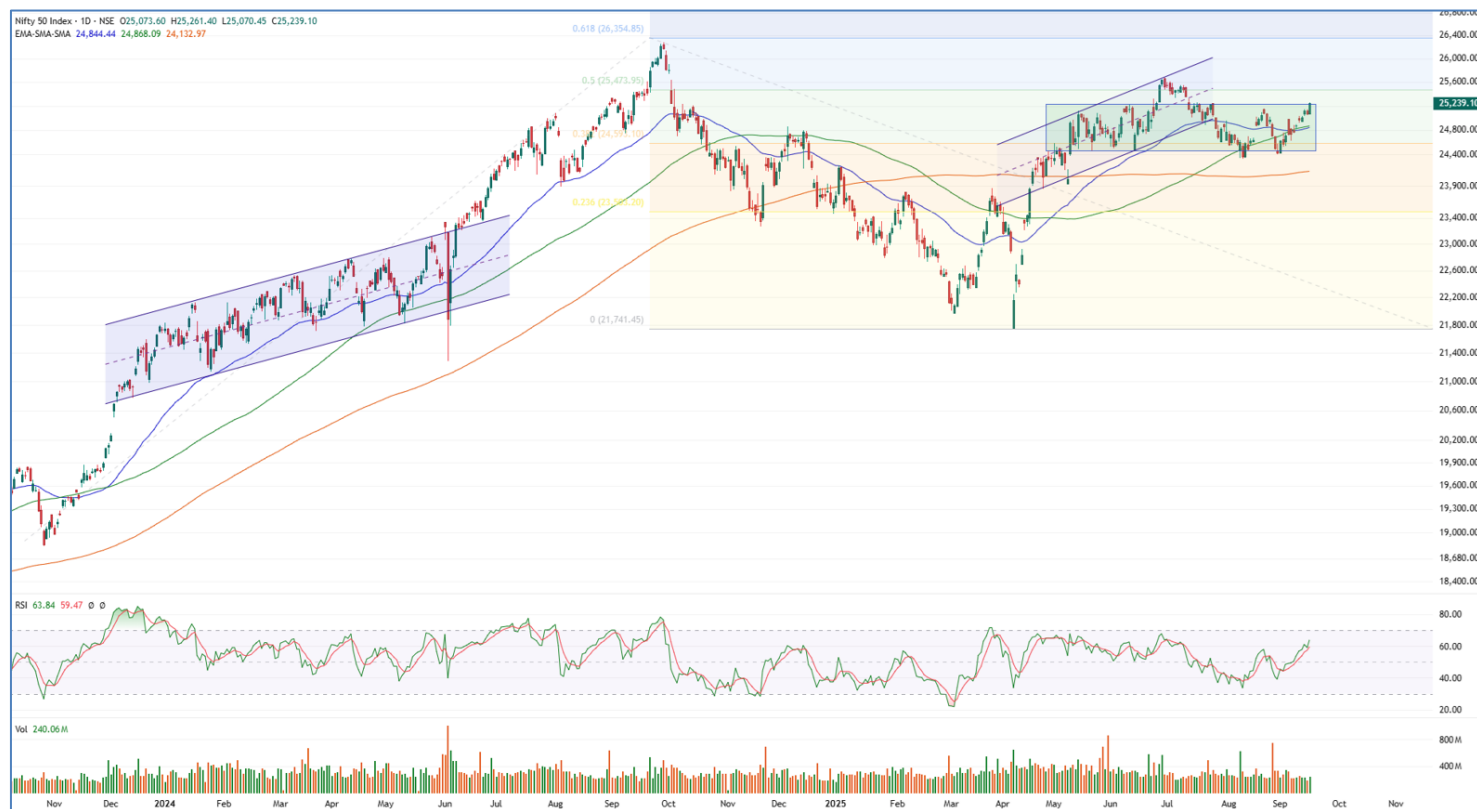
Indices	Period	Closing	% Chng	Trend	Reversal	2 Sup	1 Sup	Pivot	1 Res	2 Res
Nifty	Daily	25239.10	0.68%	10	25090.05	24999	25119	25190	25310	25381
	Weekly	25114.00	1.51%	2	24761.30	24615	24864	25002	25252	25389
	Monthly	24426.85	-1.38%	-1	24777.20	23826	24126	24639	24939	25452
Bank Nifty	Daily	55147.60	0.47%	10	54628.00	54629	54888	55037	55296	55445
	Weekly	54809.30	1.28%	-10	54851.95	53796	54303	54577	55084	55359
	Monthly	53655.65	-4.12%	-1	56293.50	51929	52792	54474	55337	57019
Sensex	Daily	82380.69	0.73%	10	81806.30	81538	81959	82201	82623	82865
	Weekly	81904.70	1.48%	1	80839.90	80288	81096	81545	82353	82801
	Monthly	79809.65	-1.69%	-2	81431.75	78110	78960	80593	81443	83075

Gainers - Losers (Nifty 500 Stocks)

Gainers				Losers			
Company Name	Last Price	% Gain	Volume	Company Name	Last Price	% Loss	Volume
Kothari Product	92.16	20	463030	Shradha Infra	55.5	-11.81	255053
Laxmi Dental	364.05	19.99	16750702	JITF Infralogis	372.5	-9.5	293205
Redington	287.19	18.96	107512774	Aprameya Engine	260	-8.29	54000
Sindhu Trade	28.21	15.71	31214650	LE Travenues Te	272.2	-6.11	12874176
Allied Digital	192.98	14.83	5495866	Studio LSD	23.6	-5.79	238000
Mirza Intl	37.6	14.15	2080763	Srivasavi	64	-5.47	49000
Zodiac Clothing	113.1	12.4	185609	Cash Ur Drive	149.5	-5.11	83000



Nifty Daily chart with RSI indicator



BankNifty Daily chart with RSI indicator



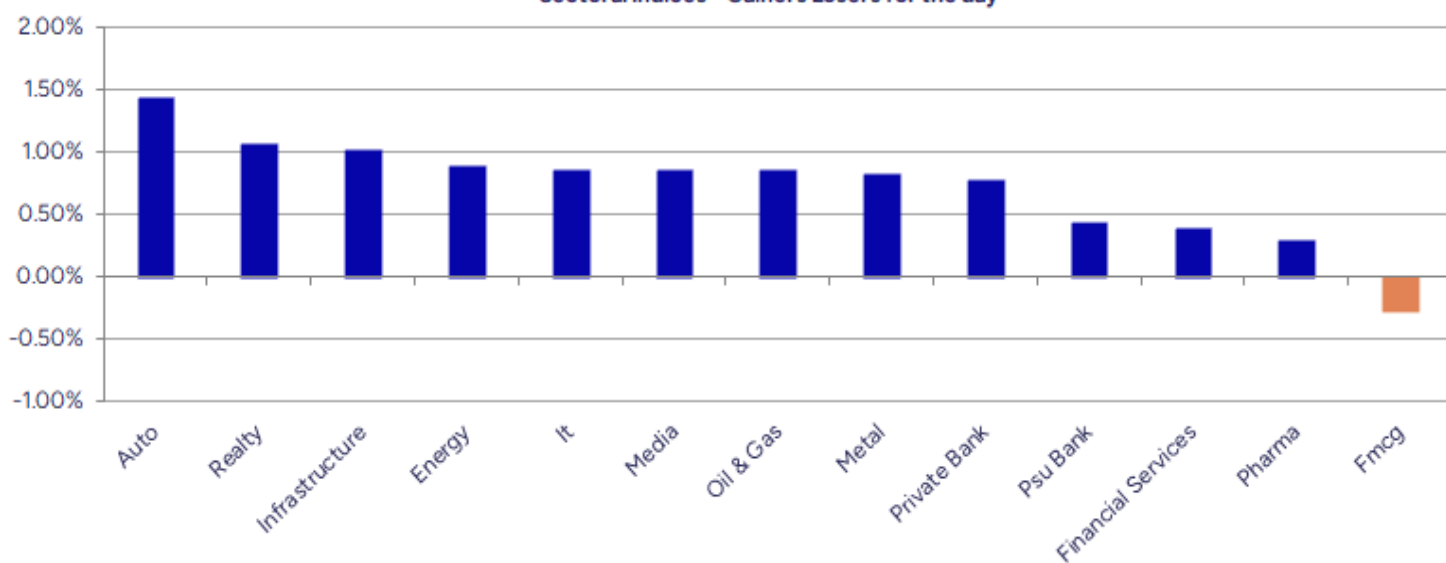
Breakouts - Cross above 200 DMA			
Company Name	LCP	Change %	200 DMA
Redington	288.62	17.33	245.99
Mirza Intl	37.79	14.58	32.98
Kothari Product	92.16	14.07	80.79
Ruby Mills	247.44	9.57	225.83
Williamson Mago	35.5	6.64	33.29
Zodiac Clothing	114.49	5.64	108.38
QMS Medical	100.1	5.27	95.09
MBL Infra	49	4.12	47.06
Aegis Logistics	801.15	3.72	772.41
Delta	89.3	3.56	86.23
DC Infotech	297.59	3.33	288
Effwa Infra & R	228	3.26	220.8
D-Link India	510.1	3.01	495.21
Shoppers Stop	558.6	2.50	544.99
Systango Tech	241	2.18	235.85
Mahanagar Gas	1362.7	2.02	1335.69
ACE Integrated	26.65	1.91	26.15
Reliance Power	47.65	1.84	46.79

* Stocks crossing above its Simple Moving Average (200DMA)

Breakdown - Cross below 200 DMA			
Company Name	LCP	Change %	200 DMA
Seamec	935	-2.23	956.33
Prime Sec	253	-1.75	257.51
Magson Retail	109.5	-1.69	111.38
Arman Financial	1436.2	-1.24	1454.21
Nephro Care Ind	152.8	-1.23	154.7
Pil Italica	14.58	-1.15	14.75
Purv Flexipack	113.55	-1.11	114.83
Juniper Hotels	296.65	-0.89	299.32
Cyber Media	18.62	-0.80	18.77
Pritish Nandy	34.64	-0.80	34.92
Ircon Internati	182.38	-0.65	183.58
Shriram Finance	618.05	-0.65	622.09
Gloster	649.45	-0.52	652.85
Fiberweb India	47.75	-0.46	47.97
DOMS Industries	2595	-0.37	2604.68
Indian Hotels	778.8	-0.37	781.69
Bannariamman	3751	-0.22	3759.28
Eldeco Housing	790.25	-0.18	791.65

* Stocks crossing below its Simple Moving Average (200DMA)

Sectoral Indices - Gainers Losers for the day



Stocks witnessing a volume surge as compared to their 5 day average volume

Watch out for the stocks that have seen a huge spurt in its share price over the last three days

Volume Shockers - NSE					
Company name	LCP	% Chg	Volume	Avg Vol *	% Chg
Sigachi Ind	43.94	0.18	119039795	1046438	11276
SRM Contractors	509.5	6.36	4319471	38037	11256
Redington	288.62	19.55	107716048	1075513	9915
Kothari Product	92.16	20	463030	5453	8391
KCK Industries	38	-2.44	662500	13600	4771
Carraro India L	450	-0.9	1816383	38000	4680
Bluspring Ent	84	6.22	7041653	158472	4343
Cool Caps	96	0.84	367500	8400	4275
Allied Digital	192.78	14.72	5499333	127291	4220
Steelcast	223.45	9.01	2501655	63817	3820
AMD Industries	60.21	10.4	939872	27411	3329
Ruby Mills	247.44	9.8	285110	11798	2317
Khadim India	258.9	11.02	435763	18435	2264
Vascon Engineer	62.29	6.52	47936625	2125566	2155
Greenlam Ind	250.8	2.36	4333570	193626	2138
Kirloskar Oil	929.15	4.48	3630246	162782	2130
SINDHUTRAD	28.05	15.05	31490640	1522783	1968
Mirza Intl	37.79	14.72	2086758	118863	1656
Zodiac Clothing	114.49	13.78	187067	10796	1633
Expleo Solution	1054.1	7.73	244649	14234	1619

* the Average Volume of last 5 days

Price Shockers - NSE				
Company name	LCP	Prv Close	% Chg	Volume
Nagreeka Export	39.7	30.31	30.98	768085
Digispice Tech	32.91	26.03	26.43	1896460
DC Infotech	297.59	239.4	24.31	601676
P S Raj Steels	188	151.8	23.85	137000
Shree Pushkar	410.4	331.45	23.82	7155898
Kothari Product	92.16	77.26	19.29	463030
NK Industries	85.9	72.55	18.4	51583
Redington	288.62	243.8	18.38	107716048
AMD Industries	60.21	50.96	18.15	939872
Lasa Supergener	13.73	11.68	17.55	677932
Allied Digital	192.78	165.92	16.19	5499333
Zodiac Clothing	114.49	98.57	16.15	187067
MBL Infra	49	42.24	16	1179902
Felix Industrie	197.05	172.05	14.53	145000
Sindhu Trade	28.05	24.56	14.21	31490640
Aegis Logistics	801.15	702.25	14.08	10510966
Paragon Fine	61	53.5	14.02	56400
CCCL	25.29	22.28	13.51	4781086
Mirza Intl	37.79	33.45	12.97	2086758
Banco Products	691.2	618.1	11.83	1295516

* the % price rise of the last 3 days

Nifty 50 stocks - Summary Details											
Symbol	LTP	Chng	% Chng	Volume (lacs)	Turnover (crs.)	52w High	Diff with 52w H	52w Low	Diff with 52w L	365 days % chng	30 days % chng
NIFTY 50	25239.10	169.90	0.68%	2400.92	22640.32	26277.35	3.95%	21743.65	16.08%	1.78%	-1.13%
ADANIENT	2401.00	17.60	0.74%	7.53	180.53	3211.00	25.23%	2025.00	18.57%	4.46%	-19.71%
ADANIPTS	1408.10	12.90	0.92%	16.35	229.90	1494.00	5.75%	995.65	41.43%	7.30%	-3.92%
APOLLOHOSP	7861.50	45.00	0.58%	1.95	152.75	7980.00	1.48%	6001.00	31.00%	-0.06%	11.36%
ASIANPAINT	2482.00	-20.60	-0.82%	7.61	189.30	3394.90	26.89%	2124.75	16.81%	-1.03%	-25.47%
AXISBANK	1121.40	17.00	1.54%	79.65	892.72	1281.65	12.50%	933.50	20.13%	3.39%	-9.29%
BAJAJ-AUTO	9095.00	70.00	0.78%	2.19	198.54	12774.00	28.80%	7089.35	28.29%	9.88%	-23.11%
BAJAJFINSV	2082.00	2.00	0.10%	9.28	193.74	2135.00	2.48%	1551.65	34.18%	8.05%	9.79%
BAJFINANCE	1006.90	-2.95	-0.29%	76.02	764.64	1025.70	1.83%	645.10	56.08%	17.23%	-86.71%
BEL	402.95	4.50	1.13%	124.64	500.14	436.00	7.58%	240.25	67.72%	3.52%	37.42%
BHARTIARTL	1942.00	37.50	1.97%	54.28	1047.39	2045.80	5.07%	1511.00	28.52%	1.64%	16.52%
CIPLA	1555.40	7.10	0.46%	4.71	73.35	1702.05	8.62%	1335.00	16.51%	-1.00%	-6.71%
COALINDIA	396.25	1.50	0.38%	25.81	102.13	517.85	23.48%	349.25	13.46%	2.68%	-19.48%
DRREDDY	1311.10	10.30	0.79%	10.34	135.33	1405.90	6.74%	1020.00	28.54%	3.21%	-80.47%
EICHERMOT	6951.00	150.00	2.21%	5.79	399.24	6954.50	0.05%	4508.75	54.17%	17.99%	39.99%
GRASIM	2848.50	46.10	1.65%	5.47	154.52	2898.40	1.72%	2276.95	25.10%	1.36%	0.65%
HCLTECH	1483.00	16.50	1.13%	17.24	254.22	2012.20	26.30%	1302.75	13.84%	-1.56%	-19.10%
HDFCBANK	966.30	-0.75	-0.08%	186.60	1803.20	1018.85	5.16%	806.50	19.81%	-51.43%	-41.95%
HDFCLIFE	773.05	-4.15	-0.53%	17.59	136.24	820.75	5.81%	584.30	32.30%	-1.46%	10.18%
HEROMOTOCO	5317.00	28.50	0.54%	9.25	492.47	6246.25	14.88%	3344.00	59.00%	12.33%	-8.75%
HINDALCO	756.00	2.35	0.31%	26.63	200.84	772.65	2.15%	546.45	38.35%	8.40%	11.94%
HINDUNILVR	2585.00	4.00	0.15%	10.41	268.64	3035.00	14.83%	2136.00	21.02%	4.05%	-12.00%
ICICIBANK	1422.40	3.00	0.21%	82.12	1166.55	1500.00	5.17%	1186.00	19.93%	-0.55%	13.52%
INDUSINDBK	743.75	3.85	0.52%	28.92	214.57	1498.00	50.35%	606.00	22.73%	-3.88%	-49.46%
INFY	1513.50	5.10	0.34%	89.23	1345.35	2006.45	24.57%	1307.00	15.80%	4.19%	-22.41%
ITC	413.65	1.00	0.24%	82.39	340.35	528.50	21.73%	390.15	6.02%	0.29%	-19.69%
JIOFIN	315.80	0.45	0.14%	109.61	346.40	363.00	13.00%	198.65	58.97%	-3.68%	-10.39%
JSWSTEEL	1115.50	14.60	1.33%	16.44	182.98	1117.90	0.21%	880.00	26.76%	5.30%	15.33%
KOTAKBANK	2023.50	52.70	2.67%	40.17	809.19	2301.90	12.09%	1679.05	20.51%	-0.37%	8.26%
LT	3670.00	83.80	2.34%	29.28	1067.67	3963.50	7.41%	2965.30	23.76%	-2.47%	-0.74%
M&M	3612.00	81.70	2.31%	24.65	882.44	3723.80	3.00%	2425.00	48.95%	8.11%	28.89%
MARUTI	15592.00	327.00	2.14%	3.82	590.41	15594.00	0.01%	10725.00	45.38%	18.00%	23.94%
NESTLEIND	1204.00	-8.50	-0.70%	11.37	137.24	1389.00	13.32%	1055.00	14.12%	11.30%	-52.10%
NTPC	335.00	3.90	1.18%	87.85	293.91	448.45	25.30%	292.80	14.41%	-2.43%	-17.51%
ONGC	235.25	2.99	1.29%	73.20	171.65	302.00	22.10%	205.00	14.76%	-1.98%	-20.31%
POWERGRID	288.20	1.95	0.68%	86.25	248.77	366.25	21.31%	247.30	16.54%	-0.85%	-15.12%
RELIANCE	1405.90	6.60	0.47%	86.86	1219.54	1551.00	9.36%	1114.85	26.11%	1.86%	-52.49%
SBILIFE	1819.10	-3.10	-0.17%	4.97	90.39	1927.95	5.65%	1372.55	32.53%	-1.00%	-1.32%
SBIN	832.65	7.90	0.96%	94.65	784.99	875.45	4.89%	680.00	22.45%	-0.22%	4.29%
SHRIRAMFIN	618.50	-5.15	-0.83%	47.58	294.68	730.45	15.33%	493.35	25.37%	1.17%	-81.48%
SUNPHARMA	1611.00	9.00	0.56%	14.81	238.01	1960.35	17.82%	1553.05	3.73%	-2.40%	-13.58%
TATACONSUM	1095.80	-6.80	-0.62%	6.41	70.17	1234.30	11.22%	882.90	24.11%	4.89%	-8.90%
TATAMOTORS	714.90	2.00	0.28%	97.65	695.92	1000.40	28.54%	535.75	33.44%	7.27%	-28.14%
TATASTEEL	172.00	2.77	1.64%	266.25	456.09	172.50	0.29%	122.62	40.27%	8.97%	10.25%
TCS	3147.90	36.00	1.16%	25.73	805.95	4546.05	30.76%	2991.60	5.22%	2.96%	-31.19%
TECHM	1530.00	10.20	0.67%	10.11	154.03	1807.70	15.36%	1209.40	26.51%	2.23%	-8.23%
TITAN	3560.00	25.90	0.73%	7.25	256.15	3867.00	7.94%	2925.00	21.71%	1.28%	-6.18%
TRENT	5150.00	17.00	0.33%	7.03	361.09	8345.00	38.29%	4488.00	14.75%	-4.42%	-29.04%
ULTRACEMCO	12595.00	160.00	1.29%	1.89	237.38	13097.00	3.83%	10047.85	25.35%	0.96%	6.12%
WIPRO	254.50	3.22	1.28%	73.15	184.70	324.60	21.60%	228.00	11.62%	1.81%	-54.36%
ETERNAL	327.15	3.85	1.19%	191.96	623.93	334.40	2.17%	194.80	67.94%	1.54%	#VALUE!

Disclaimer / Disclosures

ANALYST CERTIFICATION

I, Mrs. Vaishali Parekh B.com, Research Analyst, author and the name subscribed to this report, hereby certify that all of the views expressed in this research report accurately reflect our views about the subject issuer(s) or securities. We also certify that no part of our compensation was, is, or will be directly or indirectly related to the specific recommendation(s) or view(s) in this report.

Terms & conditions and other disclosures:

Prabhudas Lilladher Pvt. Ltd, Mumbai, India (hereinafter referred to as "PL") is engaged in the business of Stock Broking, Portfolio Manager, Depository Participant and distribution for third party financial products. PL is a subsidiary of Prabhudas Lilladher Advisory Services Pvt Ltd. which has its various subsidiaries engaged in business of commodity broking, investment banking, financial services (margin funding) and distribution of third party financial/other products, details in respect of which are available at www.plindia.com

This document has been prepared by the Research Division of PL and is meant for use by the recipient only as information and is not for circulation. This document is not to be reported or copied or made available to others without prior permission of PL. It should not be considered or taken as an offer to sell or a solicitation to buy or sell any security.

The information contained in this report has been obtained from sources that are considered to be reliable. However, PL has not independently verified the accuracy or completeness of the same. Neither PL nor any of its affiliates, its directors or its employees accepts any responsibility of whatsoever nature for the information, statements and opinion given, made available or expressed herein or for any omission therein.

Recipients of this report should be aware that past performance is not necessarily a guide to future performance and value of investments can go down as well. The suitability or otherwise of any investments will depend upon the recipient's particular circumstances and, in case of doubt, advice should be sought from an independent expert/advisor.

Either PL or its affiliates or its directors or its employees or its representatives or its clients or their relatives may have position(s), make market, act as principal or engage in transactions of securities of companies referred to in this report and they may have used the research material prior to publication.

PL may from time to time solicit or perform investment banking or other services for any company mentioned in this document.

PL is registered as Research Analyst under Securities and Exchange Board of India (Research Analysts) Regulations, 2014 PL submits that no material disciplinary action has been taken on us by any Regulatory Authority impacting Equity Research Analysis activities.

PL or its research analysts or its associates or his relatives do not have any financial interest in the subject company.

PL or its research analysts or its associates or his relatives do not have actual/beneficial ownership of one per cent or more securities of the subject company at the end of the month immediately preceding the date of publication of the research report.

PL or its research analysts or its associates or his relatives do not have any material conflict of interest at the time of publication of the research report.

PL or its associates might have received compensation from the subject company in the past twelve months.

PL or its associates might have managed or co-managed public offering of securities for the subject company in the past twelve months or mandated by the subject company for any other assignment in the past twelve months.

PL or its associates might have received any compensation for investment banking or merchant banking or brokerage services from the subject company in the past twelve months.

PL or its associates might have received any compensation for products or services other than investment banking or merchant banking or brokerage services from the subject company in the past twelve months PL or its associates might have received any compensation or other benefits from the subject company or third party in connection with the research report.

PL encourages independence in research report preparation and strives to minimize conflict in preparation of research report. PL or its analysts did not receive any compensation or other benefits from the subject Company or third party in connection with the preparation of the research report. PL or its Research Analysts do not have any material conflict of interest at the time of publication of this report.

It is confirmed that Mrs.Vaishali Parekh B.com, Research Analyst of this report has not received any compensation from the companies mentioned in the report in the preceding twelve months compensation of our Research Analysts is not based on any specific merchant banking, investment banking or brokerage service transactions.

The Research analysts for this report certifies that all of the views expressed in this report accurately reflect his or her personal views about the subject company or companies and its or their securities, and no part of his or her compensation was, is or will be, directly or indirectly related to specific recommendations or views expressed in this report.

The research analysts for this report has not served as an officer, director or employee of the subject company PL or its research analysts have not engaged in market making activity for the subject company

Our sales people, traders, and other professionals or affiliates may provide oral or written market commentary or trading strategies to our clients that reflect opinions that are contrary to the opinions expressed herein, and our proprietary trading and investing businesses may make investment decisions that are inconsistent with the recommendations expressed herein. In reviewing these materials, you should be aware that any or all of the foregoing, among other things, may give rise to real or potential conflicts of interest.

PL and its associates, their directors and employees may (a) from time to time, have a long or short position in, and buy or sell the securities of the subject company or (b) be engaged in any other transaction involving such securities and earn brokerage or other compensation or act as a market maker in the financial instruments of the subject company or act as an advisor or lender/borrower to the subject company or may have any other potential conflict of interests with respect to any recommendation and other related information and opinions.